



Summary Report for MDE's PFAS Public Water System Study Phase 5 (July 2023 – January 2025)

This document provides a summary of the results from Phase 5 of the Maryland Department of the Environment (MDE)'s Public Water System (PWS) study for per- and polyfluoroalkyl substances (PFAS), which took place between 2023 and 2025. A PWS provides water for human consumption to at least 15 service connections or serves an average of 25 people for at least 60 days a year. Phase 5 focused on sampling all Non-Transient Non-Community Water Systems (NTNC). A NTNC is a PWS that regularly supplies water to at least 25 of the same people at least 6 months per year, but does not meet the definition of a Community Water System (CWS). A CWS is a PWS that supplies water to the same population year-round. Maryland's approximately 450 CWSs were sampled between 2020 and 2022. Some examples of NTNC are schools, factories, and office buildings.

On April 10, 2024, the EPA established federal drinking water standards for 6 PFAS compounds under the Safe Drinking Water Act. Enforceable Maximum Contaminant Levels (MCLs) for PFOA and PFOS were set at 4 parts per trillion (ppt), MCLs for PFHxS, PFNA and HFPO-DA were set at 10 ppt, and a Hazard Index was set for a combination of 4 compounds (PFHxS, PFNA, HFPO-DA and PFBS). CWSs and NTNCs will be required to sample for these contaminants starting in 2027 and report results to their customers. Starting in 2029, systems will be required to achieve the drinking water limits and notify customers of violations.

From July 2023, to January 2025, MDE collaborated with the Maryland Department of Health (MDH) to collect and analyze 573 drinking water samples from 441 NTNCs. Based on Phase 5 results, MDE recommended that systems conduct certain actions such as notifying their customers, continuing to monitor PFAS in their drinking water, and implementing PFAS reduction measures. MDE also worked with systems to connect them to funding for remediation through the Infrastructure Investment and Jobs Act (Bipartisan Infrastructure Law). All Phase 5 sample results can be found in **Appendix A** of this report.

MDE's Previous Public Water System Monitoring

In September 2020, MDE initiated its multi-phased PWS study for PFAS in drinking water. Phases 1, 2, 3 and 4 of MDE's PWS Study were completed between September 2020 and December 2022. Under Phases 1 and 2, water systems were selected and prioritized based on the following:

- Consumer potential for long-term exposure to PFAS (if present) (i.e., CWS customers vs Non-Transient Non-Community (NTNC) customers)
- Drinking water source vulnerabilities (e.g., surface waters and groundwater from unconfined and semi-confined aquifers)



Summary Report for MDE's PFAS Public Water System Study Phase 5 (July 2023 – January 2025)

- Proximity and relative risk to potential PFAS sources (i.e., CWS source water is located within 1,000 ft (Phase 1) or 1 mile (Phase 2) of one or more potential sources of PFAS)

Under Phase 1, PFOA and/or PFOS were detected in approximately three-quarters of samples; about half of the samples tested during Phase 2 had PFOA and/or PFOS detections. Because of the high levels of detection for PFOA and PFOS, MDE continued its monitoring efforts under Phase 3 and tested the remaining CWSs in the state. On June 15, 2022, the EPA released interim health advisories for PFOA and PFOS in drinking water at 0.004 parts per trillion (ppt) and 0.02 ppt, respectively. In response to these lower levels, MDE initiated Phase 4 sampling, which looked at CWSs with previous detections of PFOA and PFOS (during Phases 1 through 3). Samples taken during Phases 1 through 4 were tested for 18 PFAS analytes under EPA Method 537.1.

MDE PWS Study – Phase 5 Monitoring Approach

In July 2023, MDE initiated the fifth phase of its PWS study to evaluate and determine the occurrence of PFAS in drinking water in NTNC water systems. During this phase, 573 drinking water samples from 441 water systems were collected and tested for 25 PFAS analytes under EPA Method 533 by the MDH-Laboratories Administration (MDH-LA). Samples collected under Phase 5 included raw and finished water samples. Raw water samples are untreated samples collected at wells with raw water taps. Finished water samples consist of treated water entering the distribution system. All samples were collected with corresponding field blanks. Multiple samples were routinely taken from systems with more than one source or treatment plant.



Summary Report for MDE's PFAS Public Water System Study Phase 5 (July 2023 – January 2025)

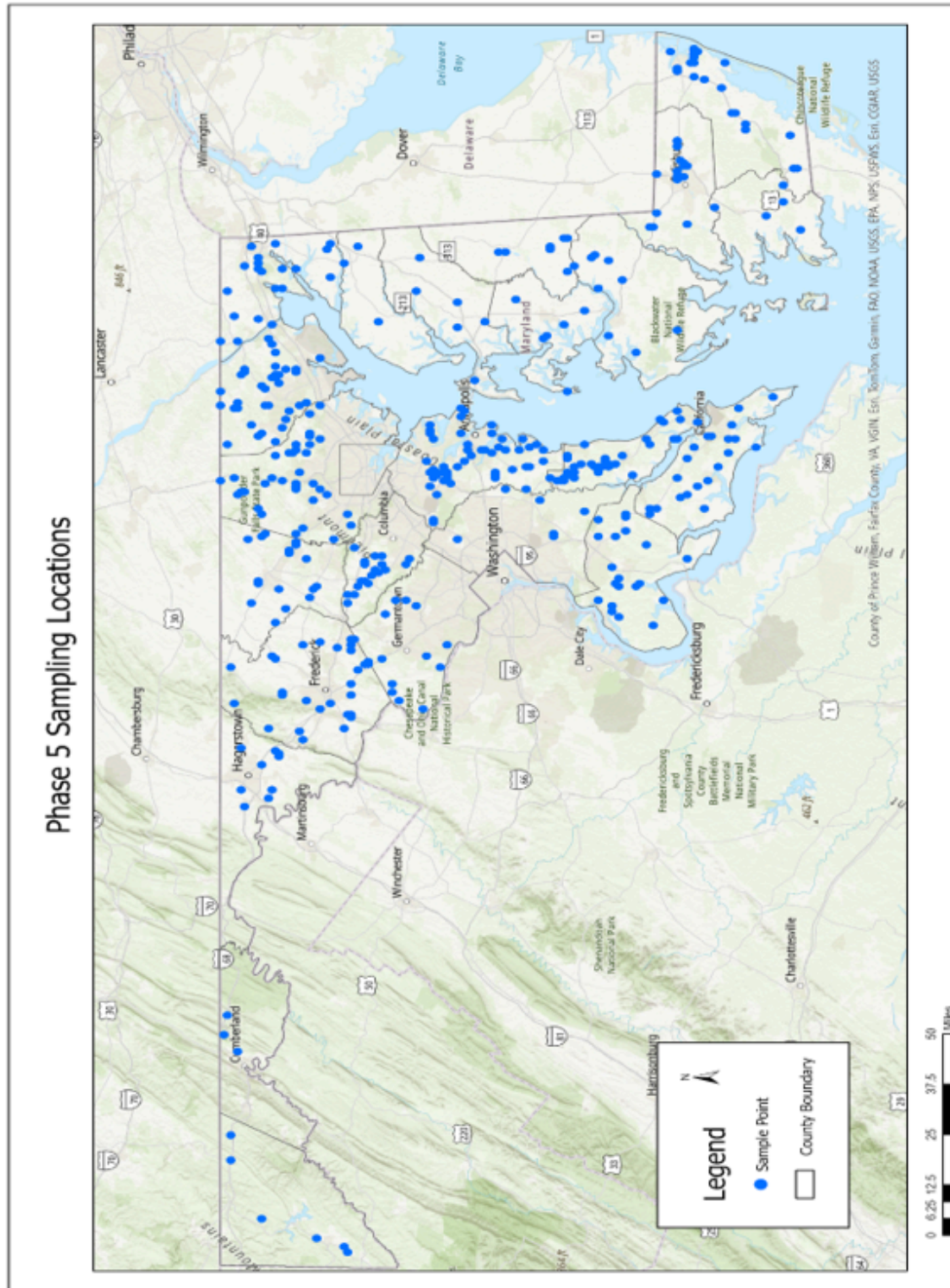


Figure 1: Phase 5 sampling locations of NTNC Water Systems. Each point represents an individual system. Several systems had more than one sample result associated with it.



Summary Report for MDE's PFAS Public Water System Study

Phase 5 (July 2023 – January 2025)

Results Overview

Of the 441 NTNCs sampled, 19% (82 systems) had detection levels above the MCLs. Out of the 13 systems with detections above the PFAS Hazard Index, 11 of those systems also had detections above the PFOA and/or PFOS regulations.

Table 1 outlines the number of systems and samples with detections above the finalized regulations for the individual PFAS compounds. It should be noted that the number of systems and samples overlap between individual PFAS.

	PFOA	PFOS	PFNA	PFHxS	PFBS	HFPO-DA (GenX)	Hazard Index	Total
Maximum Contaminant Level (ppt)	4	4	10	10	2,000	10	1 (unitless)	-
# of Sample Detections (out of 573)	202	148	45	88	182	0	91	232
# of Samples Above MCLs	101	66	7	11	0	0	16	113
% of Samples Above MCLs	18%	12%	1%	2%	-	-	3%	20%
# of Systems Above MCLs (out of 441)	76	55	9	8	0	0	13	82
% of Systems Above MCLs	17%	12%	2%	2%	-	-	3%	19%
Min Detection (ppt)	<RL	<RL	<RL	<RL	<RL	<RL	-	-
Max Detection (ppt)	91.9	236	27.8	137	44.5	<RL	-	-

Table 1: Breakdown of results based on individual PFAS compounds with number of samples and number of systems.



Summary Report for MDE's PFAS Public Water System Study Phase 5 (July 2023 – January 2025)

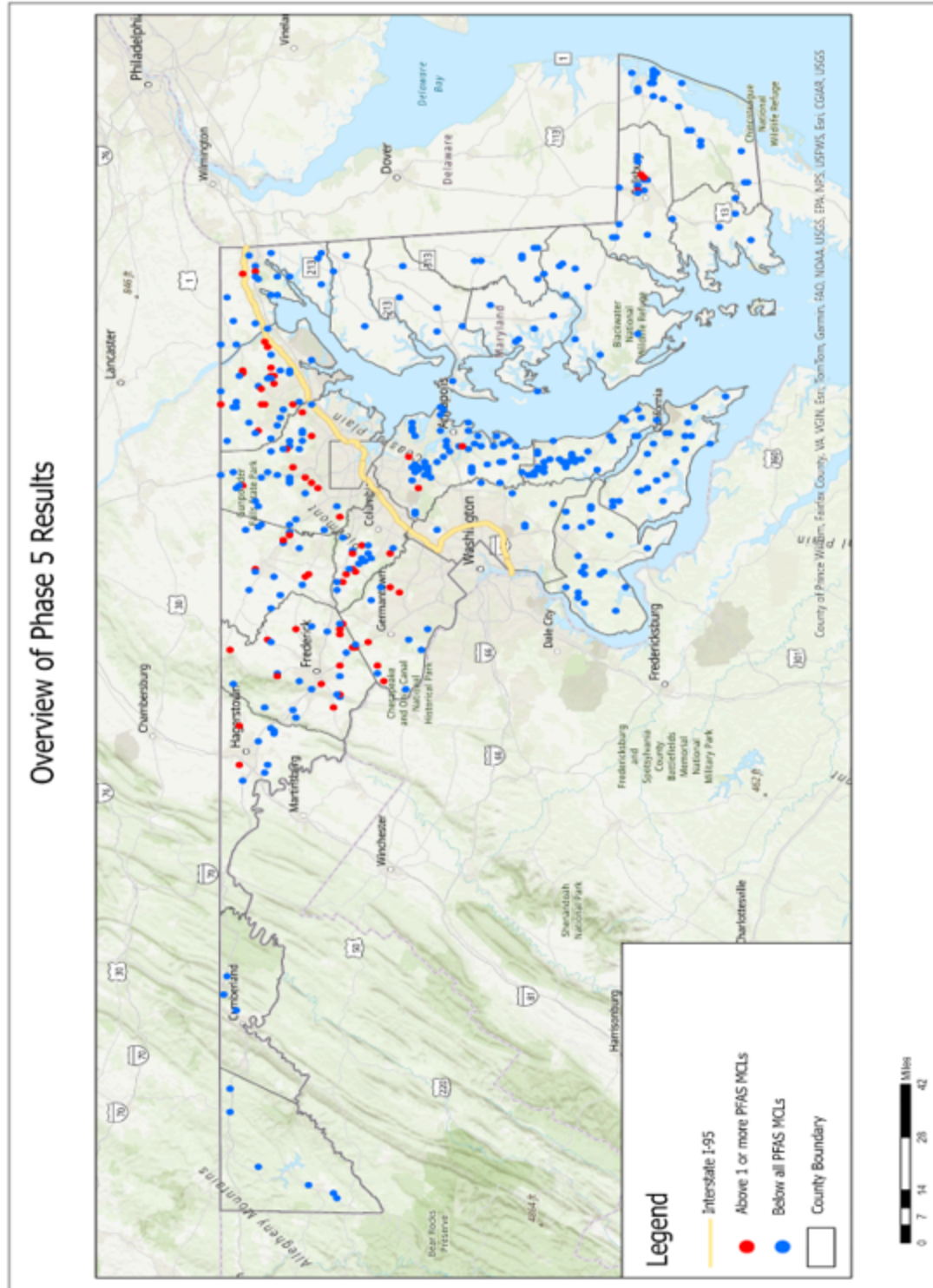


Figure 2: Overview of Phase 5 Results. Each point represents an individual system. Several systems had more than one sample result associated with it.



Summary Report for MDE's PFAS Public Water System Study Phase 5 (July 2023 – January 2025)

Maryland can be split into two geological regions: the fractured rock region and the coastal plain region. These two regions are separated by the Fall Line, which runs roughly along Interstate 95 (I-95). The fractured rock region in Maryland is the area west of I-95, while the coastal plain region is east of I-95. Water system wells in the fractured rock region of the state are generally more susceptible to contamination than water system wells in the coastal plain region because of the lack of deep confined aquifer layers where water is drawn from. Confined aquifers have natural barriers, called confining layers, that prevent contamination from entering the water source. This is why the majority of the water systems that had sample results above the MCLs were in the fractured rock region (75 systems) versus the coastal plain region (7 systems). All systems sampled in the coastal plain region with results above the MCLs have one or more water sources in shallow unconfined aquifers.

Table 2 below gives a breakdown of the numbers of systems by county with detections above regulations. There are no NTNC systems on well water in Baltimore City; therefore, they were not included in Phase 5.



Summary Report for MDE's PFAS Public Water System Study Phase 5 (July 2023 – January 2025)

County	# of Systems Sampled	# of Systems Above MCLs	Maximum PFOS Detected	Maximum PFOA Detected
Allegany	3	0	<RL	<RL
Anne Arundel	58	3	25.7	83.3
Baltimore	38	10	10.9	91.9
Baltimore City	0	N/A	N/A	N/A
Calvert	50	0	<RL	<RL
Caroline	6	0	<RL	<RL
Carroll	19	8	22.5	28.4
Cecil	23	3	13.5	37
Charles	23	0	<RL	<RL
Dorchester	9	0	3.07	2.66
Frederick	32	18	236	51.9
Garrett	6	0	<RL	2.38
Harford	41	20	100	77.3
Howard	22	9	16.4	8.9
Kent	3	0	0.586	1.23
Montgomery	12	5	25	45.9
Prince George's	5	0	2.81	3.2
Queen Anne's	7	0	<RL	<RL
Somerset	5	0	1.42	3.97
St. Mary's	22	0	<RL	<RL
Talbot	6	0	<RL	<RL
Washington	9	2	82.3	19.9
Wicomico	16	4	110	15.9
Worcester	26	0	3.28	2.34

Table 2: Breakdown of number of systems by county with detection above regulations. Maximum concentrations of PFOS and PFOA detected in each county are listed.

The results from Phase 5 were similar to results collected from CWSs under Phases 1 through 4. For the CWSs, 15% had MCL exceedances, compared with 19% for NTNCs. Exceedances for CWSs and NTNCs were primarily found in the fractured rock portion of the state and in withdrawals from unconfined aquifers in the coastal plain.

For water systems with PFAS detections above the MCLs, MDE has worked with them to develop and implement remediation plans. These actions included issuing public notices, performing additional



Summary Report for MDE's PFAS Public Water System Study Phase 5 (July 2023 – January 2025)

monitoring, and developing a plan to address the PFAS concentrations. Remedial actions that systems can take to address PFAS include installing treatment, interconnecting with a nearby system, removing a well from service, and finding an alternative water source (typically by drilling a new well).

MDE is actively coordinating with systems to connect them with funding through the Bipartisan Infrastructure Law to address elevated PFAS concentrations.

Additional Resources

Additional resources can be found through the following links:

- MDE's WSP PFAS Webpage:
https://mde.maryland.gov/programs/Water/water_supply/Pages/PFAS_Home.aspx
- MDE's Phase 1 Report:
https://mde.maryland.gov/programs/water/water_supply/Documents/PFAS_Public_Water_System_Study-Phase1Report.pdf
- MDE's Phase 2 Report:
https://mde.maryland.gov/PublicHealth/Documents/Phase2Report_Apr2022_Final.pdf
- MDE's Phase 3 Report:
<https://mde.maryland.gov/PublicHealth/Documents/Phase3ReportFinal.pdf>
- MDE's Phase 4 Report:
https://mde.maryland.gov/programs/water/water_supply/Documents/Phase4ReportFinal.pdf
- EPA's PFAS Drinking Water Regulations:
<https://www.epa.gov/sdwa/and-polyfluoroalkyl-substances-pfas>
- EPA Method 533:
<https://www.epa.gov/sites/default/files/2019-12/documents/method-533-815b19020.pdf>



Maryland
Department of
the Environment

Summary Report for MDE's PFAS Public Water System Study Phase 5 (July 2023 – January 2025)

APPENDIX A Phase 5 Results

Phase 5 PFAS Sample Results

County	PWSID	System Name	Facility Source	Sample Collection Date	Sample Type	HI	PFOS	PFOA	HFPO-DA	PFBS	PFNA	PFHxS	11CI-PF3OUIS	ADONA	9CI-PF3ONS	PFDA	PFDOA	PFHpA	PFHxA	PFUnDA	PFBA	PFPeA	PFPeS	PFHpS	4-2 FTS	6-2 FTS	8-2 FTS	PFEESA	PFMPA	PFMBA	NFDHA
Allegany	MD1010001	Flintstone Elementary School	Flintstone School	7/16/2024	Finished	NA	<RL	<RL	<RL	<RL	<RL	<RL	<RL	<RL	<RL	<RL	<RL	<RL	<RL	<RL	<RL	<RL	<RL	<RL	<RL	<RL	<RL	<RL	<RL	<RL	<RL
Allegany	MD1011026	R140 Efficiency Apartments	Apartment #11 (Beside Wt Room)	10/23/2024	Finished	NA	<RL	<RL	<RL	<RL	<RL	<RL	<RL	<RL	<RL	<RL	<RL	<RL	1.57	<RL	<RL	<RL	<RL	<RL	<RL	<RL	<RL	<RL	<RL	<RL	<RL
Allegany	MD1011051	Rocky Gap State Park	Filter Plant - Lake Habeeb	8/4/2023	Finished	NA	<RL	<RL	<RL	<RL	<RL	<RL	<RL	<RL	<RL	<RL	<RL	<RL	<RL	<RL	<RL	<RL	<RL	<RL	<RL	<RL	<RL	<RL	<RL	<RL	<RL
Anne Arundel	MD1020003	Chesapeake Complex	Wtp Bodkie Elementary Well 2 Aa843456	5/8/2024	Finished	NA	<RL	<RL	<RL	<RL	<RL	<RL	<RL	<RL	<RL	<RL	<RL	<RL	<RL	<RL	<RL	<RL	<RL	<RL	<RL	<RL	<RL	<RL	<RL	<RL	<RL
Anne Arundel	MD1020012	Davidsonville Elementary	Davidsonville Elementary Wtp 2	5/8/2024	Finished	NA	<RL	<RL	<RL	<RL	<RL	<RL	<RL	<RL	<RL	<RL	<RL	<RL	<RL	<RL	<RL	<RL	<RL	<RL	<RL	<RL	<RL	<RL	<RL	<RL	<RL
Anne Arundel	MD1020013	Deale Elementary	Deale Elementary Wtp - Well 1	5/9/2024	Finished	NA	<RL	<RL	<RL	<RL	<RL	<RL	<RL	<RL	<RL	<RL	<RL	<RL	<RL	<RL	<RL	<RL	<RL	<RL	<RL	<RL	<RL	<RL	<RL	<RL	<RL
Anne Arundel	MD1020017	Rockbridge Academy	W104 Aa200340	7/24/2024	Finished	NA	<RL	<RL	<RL	<RL	<RL	<RL	<RL	<RL	<RL	<RL	<RL	<RL	<RL	<RL	<RL	<RL	<RL	<RL	<RL	<RL	<RL	<RL	<RL	<RL	<RL
Anne Arundel	MD1020017	Rockbridge Academy	W103 Aa818353	7/24/2024	Raw	NA	<RL	<RL	<RL	<RL	<RL	<RL	<RL	<RL	<RL	<RL	<RL	<RL	1.35	<RL	1.37	1.64	<RL	<RL	<RL	<RL	<RL	<RL	<RL	<RL	<RL
Anne Arundel	MD1020018	Key School	Carroll House Wtp	6/17/2024	Finished	NA	<RL	<RL	<RL	<RL	<RL	<RL	<RL	<RL	<RL	<RL	<RL	<RL	<RL	<RL	<RL	<RL	<RL	<RL	<RL	<RL	<RL	<RL	<RL	<RL	<RL
Anne Arundel	MD1020018	Key School	2Nd Grade/Manse Add Bldg Wtp	6/17/2024	Finished	NA	<RL	<RL	<RL	<RL	<RL	<RL	<RL	<RL	<RL	<RL	<RL	<RL	<RL	<RL	<RL	<RL	<RL	<RL	<RL	<RL	<RL	<RL	<RL	<RL	<RL
Anne Arundel	MD1020019	Lake Shore Elementary	Lake Shore Elementary Wtp	5/8/2024	Finished	NA	<RL	<RL	<RL	<RL	<RL	<RL	<RL	<RL	<RL	<RL	<RL	<RL	<RL	<RL	<RL	<RL	<RL	<RL	<RL	<RL	<RL	<RL	<RL	<RL	<RL
Anne Arundel	MD1020020	Lothian Elementary	Lothian Elementary	5/9/2024	Finished	NA	<RL	<RL	<RL	<RL	<RL	<RL	<RL	<RL	<RL	<RL	<RL	<RL	<RL	<RL	<RL	<RL	<RL	<RL	<RL	<RL	<RL	<RL	<RL	<RL	<RL
Anne Arundel	MD1020021	Mayo Elementary	Mayo Elementary-New School Wtp	5/8/2024	Finished	NA	<RL	<RL	<RL	<RL	<RL	<RL	<RL	<RL	<RL	<RL	<RL	<RL	<RL	<RL	<RL	<RL	<RL	<RL	<RL	<RL	<RL	<RL	<RL	<RL	<RL
Anne Arundel	MD1020022	Millersville Elementary	Poe @ Wtp	5/8/2024	Finished	NA	<RL	<RL	<RL	<RL	<RL	<RL	<RL	<RL	<RL	<RL	<RL	<RL	<RL	<RL	<RL	<RL	<RL	<RL	<RL	<RL	<RL	<RL	<RL	<RL	<RL
Anne Arundel	MD1020025	Shady Side Elementary	Shady Side Elementary Wtp	5/9/2024	Finished	NA	<RL	<RL	<RL	<RL	<RL	<RL	<RL	<RL	<RL	<RL	<RL	<RL	<RL	<RL	<RL	<RL	<RL	<RL	<RL	<RL	<RL	<RL	<RL	<RL	<RL
Anne Arundel	MD1020027	South Shore Elementary	South Shore Elementary Wtp	5/8/2024	Finished	NA	<RL	<RL	<RL	<RL	<RL	<RL	<RL	<RL	<RL	<RL	<RL	<RL	<RL	<RL	<RL	<RL	<RL	<RL	<RL	<RL	<RL	<RL	<RL	<RL	<RL
Anne Arundel	MD1020028	Southern High School	Southern High School	5/9/2024	Finished	NA	<RL	<RL	<RL	<RL	<RL	<RL	<RL	<RL	<RL	<RL	<RL	<RL	<RL	<RL	<RL	<RL	<RL	<RL	<RL	<RL	<RL	<RL	<RL	<RL	<RL
Anne Arundel	MD1020029	Southern Middle School	Southern Middle School	5/9/2024	Finished	NA	<RL	<RL	<RL	<RL	<RL	<RL	<RL	<RL	<RL	<RL	<RL	<RL	<RL	<RL	<RL	<RL	<RL	<RL	<RL	<RL	<RL	<RL	<RL	<RL	<RL
Anne Arundel	MD1020030	St. Andrews School	Poe @Church And Elem. Wtp	6/17/2024	Finished	NA	<RL	<RL	<RL	<RL	<RL	<RL	<RL	<RL	<RL	<RL	<RL	<RL	4.43	<RL	1.37	5.48	<RL	<RL	<RL	<RL	<RL	<RL	<RL	<RL	<RL
Anne Arundel	MD1020030	St. Andrews School	St. Andrew'S Middle Sch Wtp - Well 3	6/17/2024	Finished	NA	<RL	<RL	<RL	<RL	<RL	<RL	<RL	<RL	<RL	<RL	<RL	<RL	<RL	<RL	<RL	<RL	<RL	<RL	<RL	<RL	<RL	<RL	<RL	<RL	<RL
Anne Arundel	MD1020031	Traceys Landing Elementary	Traceys Landing Elementary	5/9/2024	Finished	NA	<RL	<RL	<RL	<RL	<RL	<RL	<RL	<RL	<RL	<RL	<RL	<RL	<RL	<RL	<RL	<RL	<RL	<RL	<RL	<RL	<RL	<RL	<RL	<RL	<RL
Anne Arundel	MD1020037	Northrop Grumman - Undersea Systems	Northrop Grumman Wtp	11/7/2024	Finished	NA	<RL	<RL	<RL	<RL	<RL	<RL	<RL	<RL	<RL	<RL	<RL	<RL	<RL	<RL	<RL	<RL	<RL	<RL	<RL	<RL	<RL	<RL	<RL	<RL	<RL
Anne Arundel	MD1020061	Baldwin Memorial U.M. Church, Day Care	Church & Child Care Center Wtp	7/31/2024	Finished	NA	<RL	<RL	<RL	<RL	<RL	<RL	<RL	<RL	<RL	<RL	<RL	<RL	<RL	<RL	<RL	<RL	<RL	<RL	<RL	<RL	<RL	<RL	<RL	<RL	<RL
Anne Arundel	MD1020066	Montessori Intl. Childrens House	Montessori Intl. Wtp	7/24/2024	Finished	NA	<RL	1.48	<RL	<RL	<RL	<RL	<RL	<RL	<RL	<RL	<RL	<RL	<RL	<RL	1.04	1.03	<RL	<RL	<RL	<RL	<RL	<RL	<RL	<RL	<RL
Anne Arundel	MD1020087	Carrie Weedon	Wtp Well Aa041101	5/9/2024	Finished	NA	<RL	<RL	<RL	<RL	<RL	<RL	<RL	<RL	<RL	<RL	<RL	<RL	<RL	<RL	<RL	<RL	<RL	<RL	<RL	<RL	<RL	<RL	<RL	<RL	<RL
Anne Arundel	MD1020088	Student Support Services Center	Wtp Well Aa110433	5/8/2024	Finished	NA	<RL	<RL	<RL	<RL	<RL	<RL	<RL	<RL	<RL	<RL	<RL	<RL	<RL	<RL	<RL	<RL	<RL	<RL	<RL	<RL	<RL	<RL	<RL	<RL	<RL
Anne Arundel	MD1020089	Smithsonian Enviro. Research Center	Serc Main Campus Plant (NtnC)	11/20/2024	Finished	NA	<RL	<RL	<RL	<RL	<RL	<RL	<RL	<RL	<RL	<RL	<RL	<RL	<RL	<RL	<RL	<RL	<RL	<RL	<RL	<RL	<RL	<RL	<RL	<RL	<RL
Anne Arundel	MD1020095	Kids Farm Childcare - Davidsonville	Wtp - Well 1	7/31/2024	Finished	NA	<RL	<RL	<RL	<RL	<RL	<RL	<RL	<RL	<RL	<RL	<RL	<RL	<RL	<RL	<RL	<RL	<RL	<RL	<RL	<RL	<RL	<RL	<RL	<RL	<RL
Anne Arundel	MD1020097	Broadwater Creek	Wonder Years Well	10/16/2024	Finished	NA	<RL	<RL	<RL	<RL	<RL	<RL	<RL	<RL	<RL	<RL	<RL	<RL	<RL	<RL	<RL	<RL	<RL	<RL	<RL	<RL	<RL	<RL	<RL	<RL	<RL
Anne Arundel	MD102101	HN&P Iv, Llc	Power Tech Wtp	11/6/2024	Finished	NA	<RL	<RL	<RL	<RL	<RL	<RL	<RL	<RL	<RL	<RL	<RL	<RL	<RL	<RL	<RL	<RL	<RL	<RL	<RL	<RL	<RL	<RL	<RL	<RL	<RL
Anne Arundel	MD1021013	The Summit School	Main House Wtp	6/24/2024	Finished	NA	<RL	<RL	<RL	<RL	<RL	<RL	<RL	<RL	<RL	<RL	<RL	<RL	<RL	<RL	<RL	<RL	<RL	<RL	<RL	<RL	<RL	<RL	<RL	<RL	<RL
Anne Arundel	MD1021013	The Summit School	Student Activity Center Wtp	6/24/2024	Finished	NA	<RL	<RL	<RL	<RL	<RL	<RL	<RL	<RL	<RL	<RL	<RL	<RL	<RL	<RL	<RL	<RL	<RL	<RL	<RL	<RL	<RL	<RL	<RL	<RL	<RL
Anne Arundel	MD1021016	Concourse Commercial Condo, Inc.	Wtp 1	10/30/2024	Finished	NA	2.2	3.42	<RL	<RL	<RL	1.53	<RL	<RL	<RL	<RL	<RL	0.899	1.5	<RL	<RL	<RL	<RL	<RL	<RL	<RL	<RL	<RL	<RL	<RL	<RL
Anne Arundel	MD1021019	Homestead Gardens	Homestead Gardens Potable Well	11/4/2024	Finished	NA	<RL	<RL	<RL	<RL	<RL	<RL	<RL	<RL	<RL	<RL	<RL	<RL	<RL	<RL	<RL	<RL	<RL	<RL	<RL	<RL	<RL	<RL	<RL	<RL	<RL
Anne Arundel	MD102115	Ourisman Automotive	Ourisman Honda Plant	11/6/2024	Finished	NA	<RL	<RL	<RL	<RL	<RL	<RL	<RL	<RL	<RL	<RL	<RL	<RL	<RL	<RL	<RL	<RL	<RL	<RL	<RL	<RL	<RL	<RL	<RL	<RL	<RL
Anne Arundel	MD102115	Ourisman Automotive	Ourisman Volkswagen Plant	11/6/2024	Finished	NA	<RL	<RL	<RL	<RL	<RL	<RL	<RL	<RL	<RL	<RL	<RL	<RL	<RL	<RL	<RL	<RL	<RL	<RL	<RL	<RL	<RL	<RL	<RL	<RL	<RL
Anne Arundel	MD102116	I-97 Office Complex	Wtp 1 (Buildings 1110 & 1114)	10/30/2024	Finished	NA	<RL	<RL	<RL	<RL	<RL	<RL	<RL	<RL	<RL	<RL	<RL	<RL	<RL	<RL	<RL	<RL	<RL	<RL	<RL	<RL	<RL	<RL	<RL	<RL	<RL
Anne Arundel	MD102116	I-97 Office Complex	Wtp 2 (Building 1111)	10/30/2024	Finished	NA	<RL	<RL	<RL	<RL	<RL	<RL	<RL	<RL	<RL	<RL	<RL	<RL	<RL	<RL	<RL	<RL	<RL	<RL	<RL	<RL	<RL	<RL	<RL	<RL	<RL
Anne Arundel	MD102116	I-97 Office Complex	Wtp 4 (Building 1120)	10/30/2024	Finished	NA	<RL	<RL	<RL	<RL	<RL	<RL	<RL	<RL	<RL	<RL	<RL	<RL	<RL	<RL	<RL	<RL	<RL	<RL	<RL	<RL	<RL	<RL	<RL	<RL	<RL
Anne Arundel	MD102116	I-97 Office Complex	Wtp 5 (Building 1121)	10/30/2024	Finished	NA	<RL	<RL	<RL	<RL	<RL	<RL	<RL	<RL	<RL	<RL	<RL	<RL	<RL	<RL	<RL	<RL	<RL	<RL	<RL	<RL	<RL	<RL	<RL	<RL	<RL

Phase 5 PFAS Sample Results

County	PWSID	System Name	Facility Source	Sample Collection Date	Sample Type	HI	PFOS	PFOA	HFPO-DA	PFBS	PFNA	PFHxS	11CI-PF3OUHS	ADONA	9CI-PF3ONS	PFDA	PFDOA	PFHpA	PFHxA	PFUnDA	PFBA	PFPeA	PFPeS	PFHpS	4-2 FTS	6-2 FTS	8-2 FTS	PFEESA	PFMPA	PFMBA	NFDHA
Anne Arundel	MD1020116	I-97 Office Complex	Wtp 6 (Building 1127)	10/30/2024	Finished	NA	<RL	<RL	<RL	<RL	<RL	<RL	<RL	<RL	<RL	<RL	<RL	<RL	<RL	<RL	<RL	<RL	<RL	<RL	<RL	<RL	<RL	<RL	<RL	<RL	<RL
Anne Arundel	MD1020116	I-97 Office Complex	Wtp 7 (Building 1131)	10/30/2024	Finished	NA	<RL	<RL	<RL	<RL	<RL	<RL	<RL	<RL	<RL	<RL	<RL	<RL	<RL	<RL	<RL	<RL	<RL	<RL	<RL	<RL	<RL	<RL	<RL	<RL	<RL
Anne Arundel	MD1020117	Greater Annapolis Veterinary Hospital	Greater Annapolis Veterinary	10/17/2024	Finished	NA	<RL	<RL	<RL	<RL	<RL	<RL	<RL	<RL	<RL	<RL	<RL	<RL	<RL	<RL	<RL	<RL	<RL	<RL	<RL	<RL	<RL	<RL	<RL	<RL	<RL
Anne Arundel	MD1020119	Headquarters I / Headquarters II	Wtp 1 Well 5 (408)	10/24/2024	Finished	NA	<RL	<RL	<RL	<RL	<RL	<RL	<RL	<RL	<RL	<RL	<RL	<RL	<RL	<RL	<RL	<RL	<RL	<RL	<RL	<RL	<RL	<RL	<RL	<RL	<RL
Anne Arundel	MD1020119	Headquarters I / Headquarters II	Wtp 2 Well 4 (413)	10/24/2024	Finished	NA	<RL	<RL	<RL	<RL	<RL	<RL	<RL	<RL	<RL	<RL	<RL	<RL	<RL	<RL	<RL	<RL	<RL	<RL	<RL	<RL	<RL	<RL	<RL	<RL	<RL
Anne Arundel	MD1020119	Headquarters I / Headquarters II	Wtp 3 Well 1 (401)	10/24/2024	Finished	NA	<RL	<RL	<RL	<RL	<RL	<RL	<RL	<RL	<RL	<RL	<RL	<RL	<RL	<RL	<RL	<RL	<RL	<RL	<RL	<RL	<RL	<RL	<RL	<RL	<RL
Anne Arundel	MD1020119	Headquarters I / Headquarters II	Wtp 4 Well 2 (407)	10/24/2024	Finished	NA	<RL	<RL	<RL	<RL	<RL	<RL	<RL	<RL	<RL	<RL	<RL	<RL	<RL	<RL	<RL	<RL	<RL	<RL	<RL	<RL	<RL	<RL	<RL	<RL	<RL
Anne Arundel	MD1020121	Tender Years Child Care	Tender Years Child Care Wtp	11/20/2024	Finished	NA	<RL	<RL	<RL	1.16	<RL	<RL	<RL	<RL	<RL	<RL	<RL	<RL	<RL	<RL	<RL	<RL	<RL	<RL	<RL	<RL	<RL	<RL	<RL	<RL	<RL
Anne Arundel	MD1020123	Brightview Business Center	Brightview Wtp 1 Well 1	10/24/2024	Finished	NA	<RL	<RL	<RL	<RL	<RL	<RL	<RL	<RL	<RL	<RL	<RL	<RL	<RL	<RL	<RL	<RL	<RL	<RL	<RL	<RL	<RL	<RL	<RL	<RL	<RL
Anne Arundel	MD1020124	Gambrells Business Park	Wtp - Building B	10/24/2024	Finished	NA	<RL	<RL	<RL	<RL	<RL	<RL	<RL	<RL	<RL	<RL	<RL	<RL	<RL	<RL	<RL	<RL	<RL	<RL	<RL	<RL	<RL	<RL	<RL	<RL	<RL
Anne Arundel	MD1020124	Gambrells Business Park	Wtp - Building A + C	10/24/2024	Finished	NA	<RL	<RL	<RL	<RL	<RL	<RL	<RL	<RL	<RL	<RL	<RL	<RL	<RL	<RL	<RL	<RL	<RL	<RL	<RL	<RL	<RL	<RL	<RL	<RL	<RL
Anne Arundel	MD1020130	Chesapeake Bay Foundation	Roof Catchment/Cistern Wtp	11/4/2024	Finished	NA	<RL	<RL	<RL	<RL	<RL	<RL	<RL	<RL	<RL	<RL	<RL	<RL	<RL	<RL	6.3	0.57	<RL	<RL	<RL	<RL	<RL	<RL	<RL	<RL	<RL
Anne Arundel	MD1020130	Chesapeake Bay Foundation	GW Wtp	11/4/2024	Finished	NA	<RL	<RL	<RL	<RL	<RL	<RL	<RL	<RL	<RL	<RL	<RL	<RL	<RL	<RL	<RL	<RL	<RL	<RL	<RL	<RL	<RL	<RL	<RL	<RL	<RL
Anne Arundel	MD1020132	Jemals Bay 50 Plaza	Jema'S Ntnc Plant Well 1	11/7/2024	Finished	NA	<RL	<RL	<RL	<RL	<RL	<RL	<RL	<RL	<RL	<RL	<RL	<RL	<RL	<RL	<RL	<RL	<RL	<RL	<RL	<RL	<RL	<RL	<RL	<RL	<RL
Anne Arundel	MD1020133	Maryland Environmental Service	Mes Hq Wtp - Well 1	10/30/2024	Finished	NA	<RL	<RL	<RL	<RL	<RL	<RL	<RL	<RL	<RL	<RL	<RL	<RL	<RL	<RL	<RL	<RL	<RL	<RL	<RL	<RL	<RL	<RL	<RL	<RL	<RL
Anne Arundel	MD1020134	Indian Creek Upper/Middle School	Well 1 Aa951864	7/31/2024	Raw	NA	<RL	<RL	<RL	<RL	<RL	<RL	<RL	<RL	<RL	<RL	<RL	<RL	<RL	<RL	<RL	<RL	<RL	<RL	<RL	<RL	<RL	<RL	<RL	<RL	<RL
Anne Arundel	MD1020134	Indian Creek Upper/Middle School	Well 2 (Aka Irrigation Well) Aa951158	7/31/2024	Raw	NA	<RL	<RL	<RL	<RL	<RL	<RL	<RL	<RL	<RL	<RL	<RL	<RL	<RL	<RL	<RL	<RL	<RL	<RL	<RL	<RL	<RL	<RL	<RL	<RL	<RL
Anne Arundel	MD1020135	Annapolis Area Christian School	Wtp 1 - Well 1	6/24/2024	Finished	NA	<RL	<RL	<RL	<RL	<RL	<RL	<RL	<RL	<RL	<RL	<RL	<RL	<RL	<RL	<RL	<RL	<RL	<RL	<RL	<RL	<RL	<RL	<RL	<RL	<RL
Anne Arundel	MD1020139	Wonder Years - London Towne Academy	London Towne Academy Well	10/16/2024	Finished	0.15555	3.14	1.98	<RL	1.1	<RL	1.55	<RL	<RL	<RL	<RL	<RL	1.06	1.78	<RL	2.07	1.97	<RL	<RL	<RL	<RL	<RL	<RL	<RL	<RL	<RL
Anne Arundel	MD1020141	Kaufmanns Office Building	Well 1	11/6/2024	Finished	NA	<RL	<RL	<RL	<RL	<RL	<RL	<RL	<RL	<RL	<RL	<RL	<RL	<RL	<RL	<RL	<RL	<RL	<RL	<RL	<RL	<RL	<RL	<RL	<RL	<RL
Anne Arundel	MD1020142	Opportunity Builders, Inc.	Well 1	11/21/2024	Finished	NA	<RL	<RL	<RL	<RL	<RL	<RL	<RL	<RL	<RL	<RL	<RL	<RL	<RL	<RL	<RL	<RL	<RL	<RL	<RL	<RL	<RL	<RL	<RL	<RL	<RL
Anne Arundel	MD1020143	Christophers Fine Foods	Treatment Plant	10/16/2024	Finished	NA	<RL	<RL	<RL	<RL	<RL	<RL	<RL	<RL	<RL	<RL	<RL	<RL	<RL	<RL	<RL	<RL	<RL	<RL	<RL	<RL	<RL	<RL	<RL	<RL	<RL
Anne Arundel	MD1020144	Pimrose School	Well 1	6/13/2024	Finished	NA	<RL	<RL	<RL	<RL	<RL	<RL	<RL	<RL	<RL	<RL	<RL	<RL	<RL	<RL	<RL	<RL	<RL	<RL	<RL	<RL	<RL	<RL	<RL	<RL	<RL
Anne Arundel	MD1020145	Grace Pointe Church Of The Nazarene	Well 1	7/17/2024	Finished	NA	<RL	<RL	<RL	<RL	<RL	<RL	<RL	<RL	<RL	<RL	<RL	<RL	<RL	<RL	<RL	<RL	<RL	<RL	<RL	<RL	<RL	<RL	<RL	<RL	<RL
Anne Arundel	MD1020146	The Council Of Renard Court Condominium	North Plant	10/17/2024	Finished	NA	<RL	<RL	<RL	<RL	<RL	<RL	<RL	<RL	<RL	<RL	<RL	<RL	<RL	<RL	<RL	<RL	<RL	<RL	<RL	<RL	<RL	<RL	<RL	<RL	<RL
Anne Arundel	MD1020146	The Council Of Renard Court Condominium	South Plant	10/17/2024	Finished	NA	<RL	<RL	<RL	<RL	<RL	<RL	<RL	<RL	<RL	<RL	<RL	<RL	<RL	<RL	<RL	<RL	<RL	<RL	<RL	<RL	<RL	<RL	<RL	<RL	<RL
Anne Arundel	MD1020147	Benfield Corporate Park Llc	Treatment Plant	10/30/2024	Finished	NA	<RL	<RL	<RL	<RL	<RL	<RL	<RL	<RL	<RL	<RL	<RL	<RL	<RL	<RL	<RL	<RL	<RL	<RL	<RL	<RL	<RL	<RL	<RL	<RL	<RL
Anne Arundel	MD1020150	Odenton Commerce Center	Common Header Well 2 Bldg B (Daycare)	6/24/2024	Finished	NA	8.6	4	<RL	<RL	<RL	6.8	<RL	<RL	<RL	<RL	1.4	2.7	<RL	1.6	1.4	<RL	<RL	<RL	<RL	<RL	<RL	<RL	<RL	<RL	<RL
Anne Arundel	MD1020150	Odenton Commerce Center	Common Header Well 1 Bldg A (State Farm)	9/19/2024	Finished	NA	5.94	4.16	<RL	<RL	<RL	5.53	<RL	<RL	<RL	<RL	1.18	2.17	<RL	<RL	1.2	<RL	<RL	<RL	<RL	<RL	<RL	<RL	<RL	<RL	<RL
Anne Arundel	MD1020152	258 Najoles Road	Wtp Well 1	10/30/2024	Finished	NA	<RL	<RL	<RL	<RL	<RL	<RL	<RL	<RL	<RL	<RL	<RL	<RL	<RL	<RL	<RL	<RL	<RL	<RL	<RL	<RL	<RL	<RL	<RL	<RL	<RL
Anne Arundel	MD1020153	Forwardgro Llc	Wtp Well 1	11/20/2024	Finished	NA	<RL	<RL	<RL	<RL	<RL	<RL	<RL	<RL	<RL	<RL	<RL	<RL	<RL	<RL	<RL	<RL	<RL	<RL	<RL	<RL	<RL	<RL	<RL	<RL	<RL
Anne Arundel	MD1020154	Cp Holdings Llc	Wtp Well 1 Aa-73-8486	11/21/2024	Finished	0.1246	2.26	1.78	<RL	<RL	0.562	0.684	<RL	<RL	<RL	<RL	0.719	0.873	<RL	<RL	0.944	<RL	<RL	<RL	<RL	<RL	<RL	<RL	<RL	<RL	<RL
Anne Arundel	MD1021181	Lula G. Scott Community Center	Lula G. Scott Wtp	10/16/2024	Finished	NA	<RL	<RL	<RL	<RL	<RL	<RL	<RL	<RL	<RL	<RL	<RL	<RL	<RL	<RL	<RL	<RL	<RL	<RL	<RL	<RL	<RL	<RL	<RL	<RL	<RL
Anne Arundel	MD1021363	Long Point Mail	Wtp - Long Point Mail Well 3	11/26/2024	Finished	NA	<RL	<RL	<RL	<RL	<RL	<RL	<RL	<RL	<RL	<RL	<RL	<RL	<RL	<RL	<RL	<RL	<RL	<RL	<RL	<RL	<RL	<RL	<RL	<RL	<RL
Anne Arundel	MD1021439	Sandy Point State Park Marina	Wtp - Wells 3 & 2	11/7/2024	Finished	NA	<RL	<RL	<RL	<RL	<RL	<RL	<RL	<RL	<RL	<RL	<RL	<RL	<RL	<RL	<RL	<RL	<RL	<RL	<RL	<RL	<RL	<RL	<RL	<RL	<RL
Anne Arundel	MD1021479	Liberty Marina	Bldg B (Rear Bldg) New Well 1	10/17/2024	Finished	NA	0.501	1.84	<RL	<RL	<RL	<RL	<RL	<RL	<RL	<RL	0.637	0.694	<RL	<RL	0.539	<RL	<RL	<RL	<RL	<RL	<RL	<RL	<RL	<RL	<RL
Anne Arundel	MD1021479	Liberty Marina	Bldgs A (Rt 301) & C (Tues Am) - Well 2	10/16/2024	Finished	1.928935	25.7	83.3	<RL	9.87	14.7	4.54	<RL	<RL	<RL	1.96	<RL	17.2	16.8	<RL	7.75	13.4	<RL	0.712	<RL	<RL	<RL	<RL	<RL	<RL	<RL
Anne Arundel	MD1021500	Elvaton Christian Academy	Wtp 1 - Well 1	1/14/2025	Finished	0.41757	8.63	5.97	<RL	1.14	<RL	4.17	<RL	<RL	<RL	<RL	<RL	1.9	3.05	<RL	2.52	3.11	<RL	<RL	<RL	<RL	<RL	<RL	<RL	<RL	<RL
Anne Arundel	MD1021635	Congregation Kol Shalom Annapolis	Wtp 1 - Well 1R	6/17/2024	Finished	NA	<RL	<RL	<RL	<RL	<RL	<RL	<RL	<RL	<RL	<RL	<RL	<RL	<RL	<RL	<RL	<RL	<RL	<RL	<RL	<RL	<RL	<RL	<RL	<RL	<RL
Anne Arundel	MD1021661	Galilee Lutheran Church And Day Care	Wtp 1 - Well 1	7/17/2024	Finished	NA	<RL	1.03	<RL	<RL	<RL	1.56	<RL	<RL	<RL	<RL	<RL	<RL	1.43	<RL	1.22	1.56	<RL	<RL	<RL	<RL	<RL	<RL	<RL	<RL	<RL

Phase 5 PFAS Sample Results

County	PWSID	System Name	Facility Source	Sample Collection Date	Sample Type	HI	PFOS	PFOA	HFPO-DA	PFBS	PFNA	PFHxS	11CI-PF3OUHS	ADONA	9CI-PF3ONS	PFDA	PFDOA	PFHpA	PFHxA	PFUnDA	PFBA	PFPeA	PFPeS	PFHpS	4-2 FTS	6-2 FTS	8-2 FTS	PFEESA	PFMPA	PFMBA	NFDHA
Baltimore	MD1030001	A.I.M. Corporation	A.I.M. Corporation Wells 2 & 3	8/17/2023	Finished	0.3	<RL	7.99	<RL	8.69	<RL	2.32	<RL	<RL	<RL	<RL	<RL	4	9.67	<RL	3.68	8.25	<RL	<RL	<RL	<RL	<RL	<RL	<RL	<RL	<RL
Baltimore	MD1030005	Carroll Manor Elementary School	Wtp - Well 1	7/17/2024	Finished	NA	<RL	<RL	<RL	1.8	<RL	<RL	<RL	<RL	<RL	<RL	<RL	1.02	3.07	<RL	1.6	3.67	<RL	<RL	<RL	2.32	<RL	<RL	<RL	<RL	<RL
Baltimore	MD1030013	Fifth District Elementary	Wtp - Well 2	7/23/2024	Finished	NA	<RL	1.01	<RL	1.17	<RL	<RL	<RL	<RL	<RL	<RL	<RL	<RL	1.94	<RL	1.21	2.16	<RL	<RL	<RL	6.49	<RL	<RL	<RL	<RL	<RL
Baltimore	MD1030018	Hereford Middle School	Hereford Middle School Well 1 Ba738284	7/29/2024	Raw	NA	1.33	2.31	<RL	4.12	<RL	<RL	<RL	<RL	<RL	<RL	<RL	1.13	1.75	<RL	2.05	1.43	<RL	<RL	<RL	<RL	<RL	<RL	<RL	<RL	<RL
Baltimore	MD1030018	Hereford Middle School	Hereford Middle School Well 2 Ba810033	7/29/2024	Raw	NA	1.31	2.52	<RL	4.07	<RL	<RL	<RL	<RL	<RL	<RL	<RL	1.26	1.91	<RL	1.96	1.55	<RL	<RL	<RL	<RL	<RL	<RL	<RL	<RL	<RL
Baltimore	MD1030021	Kingsville Elementary School	Pumphouse Well 1	7/17/2024	Finished	1.6	10.9	8.59	<RL	1.94	14.1	1.67	<RL	<RL	<RL	<RL	<RL	5.04	9.36	<RL	4.18	11.6	<RL	<RL	<RL	<RL	<RL	<RL	<RL	<RL	<RL
Baltimore	MD1030025	Maryvale Preparatory School	Well 1 (Falls Well) Nopermit Ba0025W1	11/15/2024	Finished	0.173405	2.28	13.5	<RL	8.61	0.708	0.983	<RL	<RL	<RL	<RL	<RL	3.36	3.86	<RL	2.25	3.34	<RL	<RL	<RL	<RL	<RL	<RL	<RL	<RL	<RL
Baltimore	MD1030025	Maryvale Preparatory School	11300 Falls Road	11/15/2024	Finished	0.16675	2.17	13.2	<RL	8.3	0.708	0.918	<RL	<RL	<RL	<RL	<RL	3.29	3.78	<RL	2.18	3.23	<RL	<RL	<RL	<RL	<RL	<RL	<RL	<RL	<RL
Baltimore	MD1030025	Maryvale Preparatory School	Well 4 (Short Well) Ba951111	11/15/2024	Finished	0.156895	2	12.6	<RL	8.59	0.66	0.866	<RL	<RL	<RL	<RL	<RL	3.3	3.63	<RL	2.08	3.14	<RL	<RL	<RL	<RL	<RL	<RL	<RL	<RL	<RL
Baltimore	MD1030025	Maryvale Preparatory School	Well 5 - New School Well Ba100099	11/15/2024	Finished	0.170305	2.11	13.7	<RL	9.21	0.695	0.962	<RL	<RL	<RL	<RL	<RL	3.28	4	<RL	2.22	3.33	<RL	<RL	<RL	<RL	<RL	<RL	<RL	<RL	<RL
Baltimore	MD1030028	Prettyboy Elementary School	Wtp - Well 1	7/23/2024	Finished	NA	1.08	2.48	<RL	3.52	<RL	<RL	<RL	<RL	<RL	<RL	<RL	2.04	5.01	<RL	5.1	6.33	<RL	<RL	<RL	<RL	<RL	<RL	<RL	<RL	<RL
Baltimore	MD1030030	Seventh District Elementary	Seventh Dist Elem 3 Ba942449	7/29/2024	Raw	NA	<RL	<RL	<RL	1.81	<RL	<RL	<RL	<RL	<RL	<RL	<RL	<RL	<RL	<RL	<RL	<RL	<RL	<RL	<RL	<RL	<RL	<RL	<RL	<RL	<RL
Baltimore	MD1030030	Seventh District Elementary	Seventh Dist Ele 2 Ba942450	7/29/2024	Finished	0.3	1.34	2.31	<RL	3.45	2.63	<RL	<RL	<RL	<RL	<RL	<RL	1.69	4.35	<RL	3.98	5.84	<RL	<RL	<RL	<RL	<RL	<RL	<RL	<RL	<RL
Baltimore	MD1030034	St. James Academy	St. James Well 1 - North/Upper	11/20/2024	Finished	0.111285	2.74	6.46	<RL	2.57	<RL	1.1	<RL	<RL	<RL	<RL	<RL	2.7	9.67	<RL	3.45	9.27	<RL	<RL	<RL	<RL	<RL	<RL	<RL	<RL	<RL
Baltimore	MD1030034	St. James Academy	Wtp Well 2	11/20/2024	Finished	NA	0.521	1.22	<RL	1.14	<RL	<RL	<RL	<RL	<RL	<RL	<RL	<RL	0.944	<RL	<RL	0.973	<RL	<RL	<RL	<RL	<RL	<RL	<RL	<RL	<RL
Baltimore	MD1030038	St. Stephen School	Kitchen	11/15/2024	Finished	NA	0.714	1.5	<RL	<RL	<RL	0.546	<RL	<RL	<RL	<RL	<RL	0.573	3.02	<RL	<RL	2.71	<RL	<RL	<RL	<RL	<RL	<RL	<RL	<RL	<RL
Baltimore	MD1030040	Glen Arm Llc	Well 1 - Office (Lobby)	9/6/2023	Finished	NA	<RL	<RL	<RL	<RL	<RL	<RL	<RL	<RL	<RL	<RL	<RL	<RL	<RL	<RL	<RL	<RL	<RL	<RL	<RL	<RL	<RL	<RL	<RL	<RL	<RL
Baltimore	MD1030040	Glen Arm Llc	Wells 2 (Back + Cafeteria)	9/6/2023	Finished	NA	2.6	2.67	<RL	1.94	<RL	<RL	<RL	<RL	<RL	<RL	<RL	<RL	<RL	<RL	1.75	<RL	<RL	<RL	<RL	<RL	<RL	<RL	<RL	<RL	<RL
Baltimore	MD1030045	Child Care Academy Of Windsor	Child Care Academy - Well	7/23/2024	Finished	NA	<RL	1.36	<RL	1.19	<RL	<RL	<RL	<RL	<RL	<RL	<RL	<RL	<RL	<RL	<RL	<RL	<RL	<RL	<RL	<RL	<RL	<RL	<RL	<RL	<RL
Baltimore	MD1030048	Liberty Christian School	Liberty Christian School Well1 Ba810354	11/14/2024	Finished	NA	1.77	91.9	<RL	2.85	<RL	<RL	<RL	<RL	<RL	<RL	<RL	1.37	4.39	<RL	<RL	8.86	<RL	<RL	<RL	<RL	<RL	<RL	<RL	<RL	<RL
Baltimore	MD1030048	Liberty Christian School	Liberty Christian School Well2 Ba881713	11/14/2024	Finished	NA	6.39	25.9	<RL	<RL	<RL	<RL	<RL	<RL	<RL	<RL	<RL	1.09	4.1	<RL	<RL	5.31	<RL	<RL	<RL	<RL	<RL	<RL	<RL	<RL	<RL
Baltimore	MD1030048	Liberty Christian	Pou-1 Water Fountain Next To Room	1/14/2025	Finished	NA	<RL	<RL	<RL	<RL	<RL	<RL	<RL	<RL	<RL	<RL	<RL	<RL	<RL	<RL	<RL	<RL	<RL	<RL	<RL	<RL	<RL	<RL	<RL	<RL	<RL
Baltimore	MD1030048	Liberty Christian	Pou 2 - Water Fountain Next To Room	1/14/2025	Finished	NA	<RL	<RL	<RL	<RL	<RL	<RL	<RL	<RL	<RL	<RL	<RL	<RL	<RL	<RL	<RL	<RL	<RL	<RL	<RL	<RL	<RL	<RL	<RL	<RL	<RL
Baltimore	MD1030048	Liberty Christian	Pou 3 - Water Fountain Next To Gym	1/14/2025	Finished	NA	<RL	<RL	<RL	<RL	<RL	<RL	<RL	<RL	<RL	<RL	<RL	<RL	<RL	<RL	<RL	<RL	<RL	<RL	<RL	<RL	<RL	<RL	<RL	<RL	<RL
Baltimore	MD1030052	Glen Arm Maintenance Fcpty/Ulla Popken	Wtp - Well 3	8/30/2023	Finished	NA	<RL	<RL	<RL	6.48	<RL	<RL	<RL	<RL	<RL	<RL	<RL	<RL	<RL	<RL	<RL	<RL	<RL	<RL	<RL	<RL	<RL	<RL	<RL	<RL	<RL
Baltimore	MD1030052	Glen Arm Maintenance Fcpty/Ulla Popken	Wtp - Wells 6 & 7	8/30/2023	Finished	NA	<RL	<RL	<RL	6.79	<RL	<RL	<RL	<RL	<RL	<RL	<RL	<RL	<RL	<RL	<RL	<RL	<RL	<RL	<RL	<RL	<RL	<RL	<RL	<RL	<RL
Baltimore	MD1030055	Camp Fretterd Military Reservation	Wtp - Well 1	8/30/2023	Finished	NA	<RL	<RL	<RL	1.88	<RL	<RL	<RL	<RL	<RL	<RL	<RL	<RL	<RL	<RL	<RL	<RL	<RL	<RL	<RL	<RL	<RL	<RL	<RL	<RL	<RL
Baltimore	MD1030058	Penn-Mar Organization, Inc.	Penn-Mar Organization Wtp	8/17/2023	Finished	NA	<RL	<RL	<RL	<RL	<RL	<RL	<RL	<RL	<RL	<RL	<RL	<RL	<RL	<RL	<RL	<RL	<RL	<RL	<RL	<RL	<RL	<RL	<RL	<RL	<RL
Baltimore	MD1030059	Eagle's Nest Golf And Country Club	Club House Wtp	8/30/2023	Finished	NA	<RL	<RL	<RL	<RL	<RL	<RL	<RL	<RL	<RL	<RL	<RL	<RL	<RL	<RL	<RL	<RL	<RL	<RL	<RL	<RL	<RL	<RL	<RL	<RL	<RL
Baltimore	MD1030060	Paper Mill Village Shopping Center	Wtp-Shopping Center	8/30/2023	Finished	NA	<RL	1.64	<RL	2.83	<RL	<RL	<RL	<RL	<RL	<RL	<RL	<RL	3.06	<RL	2.78	3.35	<RL	<RL	<RL	<RL	<RL	<RL	<RL	<RL	<RL
Baltimore	MD1030061	Hillendale Country Club	Wtp - County Club Well	8/30/2023	Finished	NA	<RL	<RL	<RL	1.27	<RL	<RL	<RL	<RL	<RL	<RL	<RL	<RL	<RL	<RL	2.55	<RL	<RL	<RL	<RL	<RL	<RL	<RL	<RL	<RL	<RL
Baltimore	MD1030065	Caves Valley Golf Club	Maintenance Bldg Well	8/29/2023	Finished	NA	<RL	1.86	<RL	1.12	<RL	<RL	<RL	<RL	<RL	<RL	<RL	<RL	<RL	<RL	<RL	<RL	<RL	<RL	<RL	<RL	<RL	<RL	<RL	<RL	<RL
Baltimore	MD1030066	Trinity Episcopal Church	Wtp	7/23/2024	Finished	NA	<RL	1.28	<RL	1.51	<RL	<RL	<RL	<RL	<RL	<RL	<RL	<RL	1.21	<RL	1.06	1.64	<RL	<RL	<RL	<RL	<RL	<RL	<RL	<RL	<RL
Baltimore	MD1030068	Jacksonville Elementary School	NA	7/17/2024	Finished	NA	1.25	8.53	<RL	5.63	<RL	<RL	<RL	<RL	<RL	<RL	<RL	4.5	11.9	<RL	5.79	12.9	<RL	<RL	<RL	<RL	<RL	<RL	<RL	<RL	<RL
Baltimore	MD1030068	Jacksonville Elementary School	Ba733256 Well 1	7/17/2024	Raw	NA	<RL	3.05	<RL	6.64	<RL	<RL	<RL	<RL	<RL	<RL	<RL	2.22	4.7	<RL	3.94	6.03	<RL	<RL	<RL	<RL	<RL	<RL	<RL	<RL	<RL
Baltimore	MD1030068	Jacksonville Elementary School	Ba929544 Well 2	7/17/2024	Raw	NA	1.55	10.3	<RL	7.27	<RL	<RL	<RL	<RL	<RL	<RL	<RL	7.08	15	<RL	7.83	16.9	<RL	<RL	<RL	<RL	<RL	<RL	<RL	<RL	<RL
Baltimore	MD1030071	Hayfields Country Club	Wells 1 & 2	8/30/2023	Finished	NA	<RL	<RL	<RL	<RL	<RL	<RL	<RL	<RL	<RL	<RL	<RL	<RL	<RL	<RL	2.16	<RL	<RL	<RL	<RL	<RL	<RL	<RL	<RL	<RL	<RL
Baltimore	MD1030076	Padonia Park Club	Office Building Wtp- 1 Well	1/27/2025	Finished	0.08831	1.09	3	<RL	2.82	<RL	0.869	<RL	<RL	<RL	<RL	<RL	1.28	2.64	<RL	2.89	2.71	<RL	<RL	<RL	<RL	<RL	<RL	<RL	<RL	<RL
Baltimore	MD1030076	Padonia Park Club	Child Care Well	1/27/2025	Finished	0.115055	3.16	6.07	<RL	6.11	<RL	1.12	<RL	<RL	<RL	<RL	<RL	2.9	6.56	<RL	4.27	6.01	<RL	<RL	<RL	<RL	<RL	<RL	<RL	<RL	<RL
Baltimore	MD1030077	Purnell Armory - Md Army National GWU/DIard	Purnell Armory	9/19/2023	Finished	NA	<RL	4.12	<RL	1.44	<RL	<RL	<RL	<RL	<RL	<RL	<RL	1.63	<RL	<RL	1.64	<RL	<RL	<RL	<RL	<RL	<RL	<RL	<RL	<RL	<RL

Phase 5 PFAS Sample Results

County	PWSID	System Name	Facility Source	Sample Collection Date	Sample Type	HI	PFOS	PFOA	HFPO-DA	PFBS	PFNA	PFHxS	11CI-PF3OUIS	ADONA	9CI-PF3ONS	PFDA	PFDOA	PFHpA	PFHxA	PFUnDA	PFBA	PFPeA	PFPeS	PFHpS	4-2 FTS	6-2 FTS	8-2 FTS	PFEESA	PFMPA	PFMBA	NFDHA
Baltimore	MD1030082	Reisterstown Lumber Company	Reisterstown Lumber	9/26/2023	Finished	NA	<RL	2.85	<RL	<RL	<RL	<RL	<RL	<RL	<RL	<RL	<RL	<RL	3.36	<RL	2.28	2.69	<RL	<RL	<RL	<RL	<RL	<RL	<RL	<RL	<RL
Baltimore	MD1030084	Sparks Elementary School	Wtp 01 New Wells 1 & 2	7/23/2024	Finished	NA	1.93	1.83	<RL	1.53	<RL	<RL	<RL	<RL	<RL	<RL	<RL	<RL	1.22	<RL	1.49	1.08	<RL	<RL	<RL	<RL	<RL	<RL	<RL	<RL	<RL
Baltimore	MD1030095	Stevenson Crossing Llc	Wtp 1 - Well 1 (#Ba-94-7816)	8/17/2023	Finished	NA	4.01	2.57	<RL	1.03	<RL	<RL	<RL	<RL	<RL	<RL	<RL	<RL	<RL	<RL	<RL	<RL	<RL	<RL	<RL	<RL	<RL	<RL	<RL	<RL	<RL
Baltimore	MD1030098	Baltimore County Agricultural Center	Wtp 1 Well 1	9/19/2023	Finished	NA	<RL	<RL	<RL	<RL	<RL	<RL	<RL	<RL	<RL	<RL	<RL	<RL	<RL	<RL	<RL	<RL	<RL	<RL	<RL	<RL	<RL	<RL	<RL	<RL	<RL
Baltimore	MD1031006	Baltimore County Animal Shelter	Treatment Plant	9/19/2023	Finished	NA	<RL	2.94	<RL	1.01	<RL	<RL	<RL	<RL	<RL	<RL	<RL	<RL	<RL	<RL	2.51	5.08	<RL	<RL	<RL	<RL	<RL	<RL	<RL	<RL	<RL
Baltimore	MD1031037	Edrich Lumber Company	Wtp01- Well 2	8/30/2023	Finished	NA	<RL	8.27	<RL	12.2	<RL	<RL	<RL	<RL	<RL	<RL	<RL	11.6	43.2	<RL	19.1	38.4	<RL	<RL	<RL	<RL	<RL	<RL	<RL	<RL	<RL
Baltimore	MD1031052	Friendly Farms	Wtp 1- Well 1	9/21/2023	Finished	NA	<RL	<RL	<RL	<RL	<RL	<RL	<RL	<RL	<RL	<RL	<RL	<RL	2.76	<RL	<RL	3	<RL	<RL	<RL	<RL	<RL	<RL	<RL	<RL	<RL
Baltimore	MD1031060	Grauls Superthrift Market	Wtp 1- Well 1	9/21/2023	Finished	NA	<RL	<RL	<RL	<RL	<RL	<RL	<RL	<RL	<RL	<RL	<RL	<RL	<RL	<RL	<RL	<RL	<RL	<RL	<RL	<RL	<RL	<RL	<RL	<RL	<RL
Baltimore	MD1031071	Hunt Valley Golf & Country Club	Wtp 1	8/30/2023	Finished	NA	6.31	6.41	<RL	5.93	<RL	<RL	<RL	<RL	<RL	<RL	<RL	3	7.42	<RL	3.46	5.26	<RL	<RL	<RL	<RL	<RL	<RL	<RL	<RL	<RL
Baltimore	MD1031131	Pine Grove Early Learning Center	Vernon Well 1	7/23/2024	Finished	NA	<RL	<RL	<RL	<RL	<RL	<RL	<RL	<RL	<RL	<RL	<RL	<RL	<RL	<RL	<RL	<RL	<RL	<RL	<RL	<RL	<RL	<RL	<RL	<RL	<RL
Baltimore	MD1031211	Oregon Grille	Wtp 1 New Well	9/21/2023	Finished	NA	<RL	<RL	<RL	<RL	<RL	<RL	<RL	<RL	<RL	<RL	<RL	<RL	<RL	<RL	<RL	<RL	<RL	<RL	<RL	<RL	<RL	<RL	<RL	<RL	<RL
Baltimore	MD1031267	Stevenson Village Shopping Center	Wtp 1 (Well 1)	8/30/2023	Finished	0.2	4.61	4.89	<RL	1.47	<RL	2.04	<RL	<RL	<RL	<RL	<RL	<RL	2.7	<RL	1.65	2.42	<RL	<RL	<RL	<RL	<RL	<RL	<RL	<RL	<RL
Baltimore	MD1031362	Kleins Shoprite - Jacksonville	Wtp 1 Wells 1, 2, And 3	9/21/2023	Finished	NA	<RL	<RL	<RL	3.29	<RL	<RL	<RL	<RL	<RL	<RL	<RL	<RL	<RL	<RL	3.2	2.61	<RL	<RL	<RL	<RL	<RL	<RL	<RL	<RL	<RL
Calvert	MD0040019	Naval Research Lab., Chesapeake Bay Div.	Poe Wtp 1 Well 6 Bldg 61, @ Utility Sink	10/29/2024	Finished	NA	<RL	<RL	<RL	<RL	<RL	<RL	<RL	<RL	<RL	<RL	<RL	<RL	<RL	<RL	<RL	<RL	<RL	<RL	<RL	<RL	<RL	<RL	<RL	<RL	<RL
Calvert	MD1040001	Appeal Elementary School	Wtp Appeal Elementary Well	5/28/2024	Finished	NA	<RL	<RL	<RL	<RL	<RL	<RL	<RL	<RL	<RL	<RL	<RL	1.89	<RL	<RL	<RL	<RL	<RL	<RL	<RL	<RL	<RL	<RL	<RL	<RL	<RL
Calvert	MD1040002	Calvert Cliffs Nuclear - Protected Area	Poe Wtp 1 Well 6 Bldg 61, 12, & 13 @ North Services	10/29/2024	Finished	NA	<RL	<RL	<RL	<RL	<RL	<RL	<RL	<RL	<RL	<RL	<RL	<RL	<RL	<RL	<RL	<RL	<RL	<RL	<RL	<RL	<RL	<RL	<RL	<RL	<RL
Calvert	MD1040004	Ms. Bevs Place	Wtp - Well 1	5/22/2024	Finished	NA	<RL	<RL	<RL	<RL	<RL	<RL	<RL	<RL	<RL	<RL	<RL	<RL	<RL	<RL	<RL	<RL	<RL	<RL	<RL	<RL	<RL	<RL	<RL	<RL	<RL
Calvert	MD1040006	Brooks Administration Building	Wtp Brooks Admin Bldg Well	9/17/2024	Finished	NA	<RL	<RL	<RL	<RL	<RL	<RL	<RL	<RL	<RL	<RL	<RL	<RL	<RL	<RL	<RL	<RL	<RL	<RL	<RL	<RL	<RL	<RL	<RL	<RL	<RL
Calvert	MD1040012	Calvert Country & Calvert Elementary	Wtp Calvert Country School	6/17/2024	Finished	NA	<RL	<RL	<RL	<RL	<RL	<RL	<RL	<RL	<RL	<RL	<RL	<RL	<RL	<RL	<RL	<RL	<RL	<RL	<RL	<RL	<RL	<RL	<RL	<RL	<RL
Calvert	MD1040022	The Calverton School	Wtp Upper School Well	5/30/2024	Finished	NA	<RL	<RL	<RL	<RL	<RL	<RL	<RL	<RL	<RL	<RL	<RL	<RL	<RL	<RL	<RL	<RL	<RL	<RL	<RL	<RL	<RL	<RL	<RL	<RL	<RL
Calvert	MD1040022	The Calverton School	Dorm Wtp-Well 3	5/30/2024	Finished	NA	<RL	<RL	<RL	<RL	<RL	<RL	<RL	<RL	<RL	<RL	<RL	<RL	<RL	<RL	<RL	<RL	<RL	<RL	<RL	<RL	<RL	<RL	<RL	<RL	<RL
Calvert	MD1040027	Huntingtown Elementary School	Wtp Huntingtown Elementary	6/17/2024	Finished	NA	<RL	<RL	<RL	<RL	<RL	<RL	<RL	<RL	<RL	<RL	<RL	<RL	<RL	<RL	<RL	<RL	<RL	<RL	<RL	<RL	<RL	<RL	<RL	<RL	<RL
Calvert	MD1040029	Greenhouse Early Learning Center	Common Header	5/29/2024	Finished	NA	<RL	<RL	<RL	<RL	<RL	<RL	<RL	<RL	<RL	<RL	<RL	<RL	<RL	<RL	<RL	<RL	<RL	<RL	<RL	<RL	<RL	<RL	<RL	<RL	<RL
Calvert	MD1040030	Mt. Harmony Elementary School	Wtp Mt. Harmony Ele Well	5/22/2024	Finished	NA	<RL	<RL	<RL	<RL	<RL	<RL	<RL	<RL	<RL	<RL	<RL	<RL	<RL	<RL	<RL	<RL	<RL	<RL	<RL	<RL	<RL	<RL	<RL	<RL	<RL
Calvert	MD1040032	Mutual Elementary School	Wtp Mutual Elementary Wells 1	5/28/2024	Finished	NA	<RL	<RL	<RL	<RL	<RL	<RL	<RL	<RL	<RL	<RL	<RL	1.94	<RL	<RL	<RL	<RL	<RL	<RL	<RL	<RL	<RL	<RL	<RL	<RL	<RL
Calvert	MD1040034	Northern Middle/High School	Northern Middle/High School Well Ca170030	5/22/2024	Finished	NA	<RL	<RL	<RL	<RL	<RL	<RL	<RL	<RL	<RL	<RL	<RL	<RL	<RL	<RL	<RL	<RL	<RL	<RL	<RL	<RL	<RL	<RL	<RL	<RL	<RL
Calvert	MD1040038	Southern Middle School	Wtp Southern Middle School	5/28/2024	Finished	NA	<RL	<RL	<RL	<RL	<RL	<RL	<RL	<RL	<RL	<RL	<RL	<RL	<RL	<RL	<RL	<RL	<RL	<RL	<RL	<RL	<RL	<RL	<RL	<RL	<RL
Calvert	MD1040041	Sunderland Elementary School	Wtp	5/22/2024	Finished	NA	<RL	<RL	<RL	<RL	<RL	<RL	<RL	<RL	<RL	<RL	<RL	<RL	<RL	<RL	<RL	<RL	<RL	<RL	<RL	<RL	<RL	<RL	<RL	<RL	<RL
Calvert	MD1040051	Calvert Co. Industrial Park	Wtp - Wells 1 & 2	9/17/2024	Finished	NA	<RL	<RL	<RL	<RL	<RL	<RL	<RL	<RL	<RL	<RL	<RL	<RL	<RL	<RL	<RL	<RL	<RL	<RL	<RL	<RL	<RL	<RL	<RL	<RL	<RL
Calvert	MD1040053	Lucrezias Childcare	New Well	5/29/2024	Finished	NA	<RL	<RL	<RL	<RL	<RL	<RL	<RL	<RL	<RL	<RL	<RL	<RL	<RL	<RL	<RL	<RL	<RL	<RL	<RL	<RL	<RL	<RL	<RL	<RL	<RL
Calvert	MD1040054	Inspired Minds Early Childhood Center	Well 1	5/29/2024	Finished	NA	<RL	<RL	<RL	<RL	<RL	<RL	<RL	<RL	<RL	<RL	<RL	<RL	<RL	<RL	<RL	<RL	<RL	<RL	<RL	<RL	<RL	<RL	<RL	<RL	<RL
Calvert	MD1040055	Calvert Cliffs Nuclear - Office Building	Poe Wtp Office Bldg Wells 4 & 5, Training Fac 1St	10/29/2024	Finished	NA	<RL	<RL	<RL	<RL	<RL	<RL	<RL	<RL	<RL	<RL	<RL	<RL	<RL	<RL	<RL	<RL	<RL	<RL	<RL	<RL	<RL	<RL	<RL	<RL	<RL
Calvert	MD1040063	Plum Point Elementary School	Wtp	6/17/2024	Finished	NA	<RL	<RL	<RL	<RL	<RL	<RL	<RL	<RL	<RL	<RL	<RL	<RL	<RL	<RL	<RL	<RL	<RL	<RL	<RL	<RL	<RL	<RL	<RL	<RL	<RL
Calvert	MD1040064	Dunkirk Market Place	10346 Southern Maryland Boulevard	11/21/2024	Finished	NA	<RL	<RL	<RL	<RL	<RL	<RL	<RL	<RL	<RL	<RL	<RL	<RL	<RL	<RL	<RL	<RL	<RL	<RL	<RL	<RL	<RL	<RL	<RL	<RL	<RL
Calvert	MD1040065	Plum Point Middle School	Wtp	6/17/2024	Finished	NA	<RL	<RL	<RL	<RL	<RL	<RL	<RL	<RL	<RL	<RL	<RL	<RL	<RL	<RL	<RL	<RL	<RL	<RL	<RL	<RL	<RL	<RL	<RL	<RL	<RL
Calvert	MD1040066	Patuxent Elementary School	Wtp	5/28/2024	Finished	NA	<RL	<RL	<RL	<RL	<RL	<RL	<RL	<RL	<RL	<RL	<RL	<RL	<RL	<RL	<RL	<RL	<RL	<RL	<RL	<RL	<RL	<RL	<RL	<RL	<RL
Calvert	MD1040067	The Tidewater School	Wtp Tidewater School Well	5/8/2024	Finished	NA	<RL	<RL	<RL	<RL	<RL	<RL	<RL	<RL	<RL	<RL	<RL	<RL	1.13	<RL	<RL	1.34	<RL	<RL	<RL	<RL	<RL	<RL	<RL	<RL	<RL
Calvert	MD1040069	Dunkirk Sawley Store #1129	10276 Southern Maryland Blvd,	10/24/2024	Finished	NA	<RL	<RL	<RL	<RL	<RL	<RL	<RL	<RL	<RL	<RL	<RL	<RL	<RL	<RL	<RL	<RL	<RL	<RL	<RL	<RL	<RL	<RL	<RL	<RL	<RL
Calvert	MD1040070	Dunkirk Medical Center	Wtp Dunkirk Medical Ctr W1	10/16/2024	Finished	NA	<RL	<RL	<RL	<RL	<RL	<RL	<RL	<RL	<RL	<RL	<RL	<RL	<RL	<RL	<RL	<RL	<RL	<RL	<RL	<RL	<RL	<RL	<RL	<RL	<RL
Calvert	MD1040071	Carroll Victoria Lodge	Wtp Well 2	9/17/2024	Finished	NA	<RL	<RL	<RL	<RL	<RL	<RL	<RL	<RL	<RL	<RL	<RL	<RL	<RL	<RL	<RL	<RL	<RL	<RL	<RL	<RL	<RL	<RL	<RL	<RL	<RL

Phase 5 PFAS Sample Results

County	PWSID	System Name	Facility Source	Sample Collection Date	Sample Type	HI	PFOS	PFOA	HFPO-DA	PFBS	PFNA	PFHxS	11CI-PF3OUIS	ADONA	9CI-PF3ONS	PFDA	PFDOA	PFHpA	PFHxA	PFUnDA	PFBA	PFPeA	PFPeS	PFHpS	4-2 FTS	6-2 FTS	8-2 FTS	PFEESA	PFMPA	PFMBA	NFDHA
Calvert	MD1040074	Sleepy Hollow Daycare	Wtp Sleepy Hollow #1 Residence	5/29/2024	Finished	NA	<RL	<RL	<RL	<RL	<RL	<RL	<RL	<RL	<RL	<RL	<RL	<RL	<RL	<RL	<RL	<RL	<RL	<RL	<RL	<RL	<RL	<RL	<RL	<RL	<RL
Calvert	MD1040074	Sleepy Hollow Daycare	Wtp Sleepy Hollow 2 Child Care	5/29/2024	Finished	NA	<RL	<RL	<RL	<RL	<RL	<RL	<RL	<RL	<RL	<RL	<RL	<RL	<RL	<RL	<RL	<RL	<RL	<RL	<RL	<RL	<RL	<RL	<RL	<RL	<RL
Calvert	MD1040075	Huntingtown High School	Wtp Huntingtown High Well	6/17/2024	Raw	NA	<RL	<RL	<RL	<RL	<RL	<RL	<RL	<RL	<RL	<RL	<RL	<RL	<RL	<RL	<RL	<RL	<RL	<RL	<RL	<RL	<RL	<RL	<RL	<RL	<RL
Calvert	MD1040076	Shoppes At Apple Greene	Dunkirk Way	10/24/2024	Finished	NA	<RL	<RL	<RL	<RL	<RL	<RL	<RL	<RL	<RL	<RL	<RL	<RL	<RL	<RL	<RL	<RL	<RL	<RL	<RL	<RL	<RL	<RL	<RL	<RL	<RL
Calvert	MD1040077	Cove Point Lng, Lp	Wtp Mega Well, Sample Tap	10/29/2024	Finished	NA	<RL	<RL	<RL	<RL	<RL	<RL	<RL	<RL	<RL	<RL	<RL	<RL	<RL	<RL	<RL	<RL	<RL	<RL	<RL	<RL	<RL	<RL	<RL	<RL	<RL
Calvert	MD1040079	Calvert Gateway & McDonalds # 16243	10850 Town Center Blvd	10/24/2024	Finished	NA	<RL	<RL	<RL	<RL	<RL	<RL	<RL	<RL	<RL	<RL	<RL	<RL	<RL	<RL	<RL	<RL	<RL	<RL	<RL	<RL	<RL	<RL	<RL	<RL	<RL
Calvert	MD1040080	Carter'S Webb	Wtp Wells 1 & 2	5/29/2024	Finished	NA	<RL	<RL	<RL	<RL	<RL	<RL	<RL	<RL	<RL	<RL	<RL	<RL	<RL	<RL	<RL	<RL	<RL	<RL	<RL	<RL	<RL	<RL	<RL	<RL	<RL
Calvert	MD1040082	Sunderland Commercial Center	Wtp Well 1	9/26/2024	Finished	NA	<RL	<RL	<RL	<RL	<RL	<RL	<RL	<RL	<RL	<RL	<RL	<RL	<RL	<RL	<RL	<RL	<RL	<RL	<RL	<RL	<RL	<RL	<RL	<RL	<RL
Calvert	MD1040084	Smart Start Early Learning Center	Wtp Well	5/30/2024	Finished	NA	<RL	<RL	<RL	<RL	<RL	<RL	<RL	<RL	<RL	<RL	<RL	<RL	<RL	<RL	<RL	<RL	<RL	<RL	<RL	<RL	<RL	<RL	<RL	<RL	<RL
Calvert	MD1040086	Fairview Centre, Inc.	8191 Jennifer Lane	11/21/2024	Finished	NA	<RL	<RL	<RL	<RL	<RL	<RL	<RL	<RL	<RL	<RL	<RL	<RL	<RL	<RL	<RL	<RL	<RL	<RL	<RL	<RL	<RL	<RL	<RL	<RL	<RL
Calvert	MD1040091	Prime Time Youth Activity Center	Wtp Well 1	5/30/2024	Raw	NA	<RL	<RL	<RL	<RL	<RL	<RL	<RL	<RL	<RL	<RL	<RL	<RL	<RL	<RL	<RL	<RL	<RL	<RL	<RL	<RL	<RL	<RL	<RL	<RL	<RL
Calvert	MD1040093	Prime Time Childrens Center	Wtp Well 1	5/30/2024	Raw	NA	<RL	<RL	<RL	<RL	<RL	<RL	<RL	<RL	<RL	<RL	<RL	<RL	<RL	<RL	<RL	<RL	<RL	<RL	<RL	<RL	<RL	<RL	<RL	<RL	<RL
Calvert	MD1040097	Grover Place Child Care Center	Wtp Well 1	5/28/2024	Finished	NA	<RL	<RL	<RL	<RL	<RL	<RL	<RL	<RL	<RL	<RL	<RL	<RL	<RL	<RL	<RL	<RL	<RL	<RL	<RL	<RL	<RL	<RL	<RL	<RL	<RL
Calvert	MD1040099	Ship's Point Business Park Llc	13325 Rousby Hall Road	10/24/2024	Finished	NA	<RL	<RL	<RL	<RL	<RL	<RL	<RL	<RL	<RL	<RL	<RL	<RL	<RL	<RL	<RL	<RL	<RL	<RL	<RL	<RL	<RL	<RL	<RL	<RL	<RL
Calvert	MD1040100	Kids Campus Early Learning Center	Well 1 Treatment Plant	5/22/2024	Finished	NA	<RL	<RL	<RL	<RL	<RL	<RL	<RL	<RL	<RL	<RL	<RL	<RL	<RL	<RL	<RL	<RL	<RL	<RL	<RL	<RL	<RL	<RL	<RL	<RL	<RL
Calvert	MD1040100	Kids Campus Early Learning Center	Well 1 Treatment Plant	7/26/2024	Finished	NA	<RL	<RL	<RL	<RL	<RL	<RL	<RL	<RL	<RL	<RL	<RL	<RL	<RL	<RL	<RL	<RL	<RL	<RL	<RL	<RL	<RL	<RL	<RL	<RL	<RL
Calvert	MD1041027	Dunkirk Business Center	Wellhead	9/26/2024	Finished	NA	<RL	<RL	<RL	<RL	<RL	<RL	<RL	<RL	<RL	<RL	<RL	<RL	<RL	<RL	<RL	<RL	<RL	<RL	<RL	<RL	<RL	<RL	<RL	<RL	<RL
Calvert	MD1041077	Dunkirk Village Shopping Center	Wtp Wells 1 & 2	10/16/2024	Finished	NA	<RL	<RL	<RL	<RL	<RL	<RL	<RL	<RL	<RL	<RL	<RL	<RL	<RL	<RL	<RL	<RL	<RL	<RL	<RL	<RL	<RL	<RL	<RL	<RL	<RL
Calvert	MD1041094	Dunkirk Town Square Shopping Center	Wtp Well 1	10/16/2024	Finished	NA	<RL	<RL	<RL	<RL	<RL	<RL	<RL	<RL	<RL	<RL	<RL	<RL	<RL	<RL	<RL	<RL	<RL	<RL	<RL	<RL	<RL	<RL	<RL	<RL	<RL
Calvert	MD1041131	Jefferson Patterson Park And Museum	Wtp Mac & Bugs 1, 2 and 7, Maintenance Break Rm	10/28/2024	Finished	NA	<RL	<RL	<RL	<RL	<RL	<RL	<RL	<RL	<RL	<RL	<RL	<RL	<RL	<RL	<RL	<RL	<RL	<RL	<RL	<RL	<RL	<RL	<RL	<RL	<RL
Calvert	MD1041131	Jefferson Patterson Park And Museum	Wtp Breckinridge Center, Classroom Sink	10/28/2024	Finished	NA	<RL	<RL	<RL	<RL	<RL	<RL	<RL	<RL	<RL	<RL	<RL	<RL	<RL	<RL	<RL	<RL	<RL	<RL	<RL	<RL	<RL	<RL	<RL	<RL	<RL
Calvert	MD1041131	Jefferson Patterson Park And Museum	Wtp Patterson Estate, Basement Rr Hs	10/28/2024	Finished	NA	<RL	<RL	<RL	<RL	<RL	<RL	<RL	<RL	<RL	<RL	<RL	<RL	<RL	<RL	<RL	<RL	<RL	<RL	<RL	<RL	<RL	<RL	<RL	<RL	<RL
Calvert	MD1041134	Sneades Hardware (Owings) - Davlyn Llc	Wtp Wellhead, Break Room Sink	10/28/2024	Finished	NA	<RL	<RL	<RL	<RL	<RL	<RL	<RL	<RL	<RL	<RL	<RL	<RL	<RL	<RL	<RL	<RL	<RL	<RL	<RL	<RL	<RL	<RL	<RL	<RL	<RL
Calvert	MD1041151	Lyons Creek Shopping Center	Poe @ Wtp Utility Sink	10/29/2024	Finished	NA	<RL	<RL	<RL	<RL	<RL	<RL	<RL	<RL	<RL	<RL	<RL	<RL	<RL	<RL	<RL	<RL	<RL	<RL	<RL	<RL	<RL	<RL	<RL	<RL	<RL
Calvert	MD1041152	The Shoppes At Dunkirk Llc -Country Plz	Wtp Wellhead	10/16/2024	Finished	NA	<RL	<RL	<RL	<RL	<RL	<RL	<RL	<RL	<RL	<RL	<RL	<RL	<RL	<RL	<RL	<RL	<RL	<RL	<RL	<RL	<RL	<RL	<RL	<RL	<RL
Calvert	MD1041184	Cardinal Hickey Academy	Wtp Well 1	5/22/2024	Finished	NA	<RL	<RL	<RL	<RL	<RL	<RL	<RL	<RL	<RL	<RL	<RL	<RL	<RL	<RL	<RL	<RL	<RL	<RL	<RL	<RL	<RL	<RL	<RL	<RL	<RL
Calvert	MD1041184	Cardinal Hickey Academy	Wtp New Church Well	5/22/2024	Finished	NA	<RL	<RL	<RL	<RL	<RL	<RL	<RL	<RL	<RL	<RL	<RL	<RL	<RL	<RL	<RL	<RL	<RL	<RL	<RL	<RL	<RL	<RL	<RL	<RL	<RL
Calvert	MD1041201	Howlin Building	2880 Dunkirk Way	11/21/2024	Finished	NA	<RL	<RL	<RL	<RL	<RL	<RL	<RL	<RL	<RL	<RL	<RL	<RL	<RL	<RL	<RL	<RL	<RL	<RL	<RL	<RL	<RL	<RL	<RL	<RL	<RL
Calvert	MD1041210	Dunkirk Professional Building	3150 W Ward Rd 301	11/21/2024	Finished	NA	<RL	<RL	<RL	<RL	<RL	<RL	<RL	<RL	<RL	<RL	<RL	<RL	<RL	<RL	<RL	<RL	<RL	<RL	<RL	<RL	<RL	<RL	<RL	<RL	<RL
Caroline	MD1050001	Choptank Electric Cooperative, Inc.	Choptank Electric Coop. Well	9/30/2024	Finished	NA	<RL	<RL	<RL	<RL	<RL	<RL	<RL	<RL	<RL	<RL	<RL	<RL	<RL	<RL	<RL	<RL	<RL	<RL	<RL	<RL	<RL	<RL	<RL	<RL	<RL
Caroline	MD1050002	Colonel Richardson Mid & High School	Well 1 (Production)	5/29/2024	Raw	NA	<RL	<RL	<RL	<RL	<RL	<RL	<RL	<RL	<RL	<RL	<RL	<RL	<RL	<RL	<RL	<RL	<RL	<RL	<RL	<RL	<RL	<RL	<RL	<RL	<RL
Caroline	MD1050002	Colonel Richardson Mid & High School	Well 5	5/29/2024	Raw	NA	<RL	<RL	<RL	<RL	<RL	<RL	<RL	<RL	<RL	<RL	<RL	<RL	<RL	<RL	<RL	<RL	<RL	<RL	<RL	<RL	<RL	<RL	<RL	<RL	<RL
Caroline	MD1050011	Tri Gas And Oil Co., Inc	Tri-Gas And Oil Co. Well	9/26/2024	Finished	NA	<RL	<RL	<RL	<RL	<RL	<RL	<RL	<RL	<RL	<RL	<RL	<RL	<RL	<RL	<RL	<RL	<RL	<RL	<RL	<RL	<RL	<RL	<RL	<RL	<RL
Caroline	MD1050013	North Caroline High School	New Well 2	5/29/2024	Raw	NA	<RL	<RL	<RL	<RL	<RL	<RL	<RL	<RL	<RL	<RL	<RL	<RL	<RL	<RL	<RL	<RL	<RL	<RL	<RL	<RL	<RL	<RL	<RL	<RL	<RL
Caroline	MD1050014	Lineage Logistics	2 Wells (Burris & Glacier)	9/26/2024	Finished	NA	<RL	<RL	<RL	<RL	<RL	<RL	<RL	<RL	<RL	<RL	<RL	<RL	<RL	<RL	<RL	<RL	<RL	<RL	<RL	<RL	<RL	<RL	<RL	<RL	<RL
Caroline	MD1050018	Choptank Transport Inc.	Common Header	9/25/2024	Finished	NA	<RL	<RL	<RL	<RL	<RL	<RL	<RL	<RL	<RL	<RL	<RL	<RL	<RL	<RL	<RL	<RL	<RL	<RL	<RL	<RL	<RL	<RL	<RL	<RL	<RL
Carroll	MD0060231	Sun Valley Assisted Living 1	Wtp 1 Well 2	8/16/2023	Finished	NA	4.02	2.09	<RL	18.3	<RL	<RL	<RL	<RL	<RL	<RL	<RL	<RL	3.14	<RL	2.65	4.21	<RL	<RL	<RL	<RL	<RL	<RL	<RL	<RL	<RL
Carroll	MD0060232	Sun Valley Assisted Living 2 - Meadows	Wtp 1 Wells 1 And 2	8/16/2023	Finished	NA	<RL	<RL	<RL	<RL	<RL	<RL	<RL	<RL	<RL	<RL	<RL	<RL	<RL	<RL	<RL	<RL	<RL	<RL	<RL	<RL	<RL	<RL	<RL	<RL	<RL
Carroll	MD1060004	B.T.R. Hampstead (Black And Decker)	Btr Hampstead Wtp	8/30/2023	Finished	NA	<RL	2.35	<RL	1.48	<RL	<RL	<RL	<RL	<RL	<RL	<RL	<RL	<RL	<RL	1.68	<RL	<RL	<RL	<RL	<RL	<RL	<RL	<RL	<RL	<RL
Carroll	MD1060008	Performance Foodservice- Carroll County	Wtp 1 Carroll County Foods Inc	8/31/2023	Finished	NA	<RL	<RL	<RL	<RL	<RL	<RL	<RL	<RL	<RL	<RL	<RL	<RL	<RL	<RL	<RL	<RL	<RL	<RL	<RL	<RL	<RL	<RL	<RL	<RL	<RL

Phase 5 PFAS Sample Results

County	PWSID	System Name	Facility Source	Sample Collection Date	Sample Type	HI	PFOS	PFOA	HFPO-DA	PFBS	PFNA	PFHxS	11CI-PF3OUIS	ADONA	9CI-PF3ONS	PFDA	PFDOA	PFHpA	PFHxA	PFUnDA	PFBA	PFPeA	PFPeS	PFHpS	4-2 FTS	6-2 FTS	8-2 FTS	PFEESA	PFMPA	PFMBA	NFDHA
Carroll	MD1060011	Charles J. Miller, Llc	Charles J. Miller Main Office	8/30/2023	Finished	NA	<RL	1.72	<RL	<RL	<RL	<RL	<RL	<RL	<RL	<RL	<RL	<RL	<RL	<RL	<RL	<RL	<RL	<RL	<RL	<RL	<RL	<RL	<RL	<RL	<RL
Carroll	MD1060014	Congoleum Corp. / Cedarhurst Plant	Congoleum Corp Wtp - Well 1	8/31/2023	Finished	0.6	22.5	19.8	<RL	4.1	<RL	5.76	<RL	<RL	<RL	<RL	<RL	4.33	4.53	<RL	4.79	2.84	2.52	<RL	<RL	<RL	<RL	<RL	<RL	<RL	<RL
Carroll	MD1060019	Finksborg Plaza Shopping Center	Wtp 1 Plaza East & West Wells	8/17/2023	Finished	1	13.2	28.4	<RL	6.73	2.79	6.47	<RL	<RL	<RL	2.18	<RL	12.2	96.7	<RL	21.5	76.5	<RL	<RL	<RL	15.4	<RL	<RL	<RL	<RL	<RL
Carroll	MD1060022	Cdj Distillery Llc	Well 1	8/31/2023	Finished	NA	<RL	<RL	<RL	1.26	<RL	<RL	<RL	<RL	<RL	<RL	<RL	<RL	<RL	<RL	<RL	<RL	<RL	<RL	<RL	<RL	<RL	<RL	<RL	<RL	<RL
Carroll	MD1060037	Sandymount Elementary	Sandymount Elem 1 C1881543	7/31/2024	Raw	NA	2.36	3.72	<RL	3.81	<RL	<RL	<RL	<RL	<RL	<RL	<RL	2.07	8.88	<RL	5.69	11.7	<RL	<RL	<RL	<RL	<RL	<RL	<RL	<RL	<RL
Carroll	MD1060037	Sandymount Elementary	Sandymount Elem 3 Nopermit C10037W3	7/31/2024	Raw	NA	2.75	3.61	<RL	3.28	<RL	<RL	<RL	<RL	<RL	<RL	<RL	1.76	6.55	<RL	4.15	9.61	<RL	<RL	<RL	<RL	<RL	<RL	<RL	<RL	<RL
Carroll	MD1060040	South Carroll High School	South Carroll High	7/29/2024	Finished	0.8	12.7	15.6	<RL	8.2	<RL	8.18	<RL	<RL	<RL	<RL	<RL	5.17	7.88	<RL	5.12	6.23	1.59	<RL	<RL	<RL	<RL	<RL	<RL	<RL	<RL
Carroll	MD1060050	Winfield Elementary	Winfield New Well A C1881723	7/29/2024	Raw	0.2	5.42	11.5	<RL	3.25	1.77	<RL	<RL	<RL	<RL	<RL	<RL	5.46	10.4	<RL	4.58	10.6	<RL	<RL	<RL	<RL	<RL	<RL	<RL	<RL	<RL
Carroll	MD1060050	Winfield Elementary	Winfield Well B C1943448	7/29/2024	Raw	0.3	2.34	4.59	<RL	2.77	1.2	1.53	<RL	<RL	<RL	<RL	<RL	2.68	4.31	<RL	2.38	4.09	<RL	<RL	<RL	<RL	<RL	<RL	<RL	<RL	<RL
Carroll	MD1060054	Mechanicsville Elementary	Wtp - Well 1	7/29/2024	Finished	0.7	1.75	<RL	<RL	1.95	<RL	7.01	<RL	<RL	<RL	<RL	<RL	<RL	2.42	<RL	1.34	2.36	1.05	<RL	<RL	<RL	<RL	<RL	<RL	<RL	<RL
Carroll	MD1060058	Runnymede Elementary	Wtp - Well 1	7/29/2024	Finished	NA	<RL	<RL	<RL	<RL	<RL	<RL	<RL	<RL	<RL	<RL	<RL	<RL	<RL	<RL	<RL	<RL	<RL	<RL	<RL	<RL	<RL	<RL	<RL	<RL	<RL
Carroll	MD1060065	Wee Care Best Day Care Center	Wtp 1 - New Well	11/19/2024	Finished	0.05887	<RL	6.52	<RL	1.14	<RL	0.583	<RL	<RL	<RL	<RL	<RL	2.29	4.27	<RL	2.22	4.58	<RL	<RL	<RL	<RL	<RL	<RL	<RL	<RL	<RL
Carroll	MD1060072	Slag Hamstead	Wtp Well 1	8/30/2023	Finished	NA	<RL	<RL	<RL	<RL	<RL	<RL	<RL	<RL	<RL	<RL	<RL	<RL	<RL	<RL	<RL	<RL	<RL	<RL	<RL	<RL	<RL	<RL	<RL	<RL	<RL
Carroll	MD1060074	Lehigh Cement Company-Union Bridge Plant	Wtp 1 Lehigh Portland Cement	8/16/2023	Finished	NA	<RL	<RL	<RL	<RL	<RL	<RL	<RL	<RL	<RL	<RL	<RL	<RL	<RL	<RL	<RL	<RL	<RL	<RL	<RL	<RL	<RL	<RL	<RL	<RL	<RL
Carroll	MD1060075	Montessori School Of Westminster	Montessori Old Well 1 C1942436	11/19/2024	Finished	0.128645	4.53	2.89	<RL	5.29	1.26	<RL	<RL	<RL	<RL	<RL	<RL	0.892	1.39	<RL	<RL	1.12	<RL	<RL	<RL	<RL	<RL	<RL	<RL	<RL	<RL
Carroll	MD1060075	Montessori School Of Westminster	Montessori New Well 2 C1943364	11/19/2024	Finished	0.27402	1.66	2.08	<RL	4.04	2.72	<RL	<RL	<RL	<RL	<RL	<RL	0.909	1.51	<RL	<RL	1.26	<RL	<RL	<RL	<RL	<RL	<RL	<RL	<RL	<RL
Carroll	MD1060084	New Windsor Quarry Maintenance Shop	Wtp_Well 1	8/16/2023	Finished	NA	3.31	<RL	<RL	<RL	<RL	<RL	<RL	<RL	<RL	<RL	<RL	<RL	<RL	<RL	<RL	<RL	<RL	<RL	<RL	<RL	<RL	<RL	<RL	<RL	<RL
Carroll	MD1061307	Tower Business Center	Wtp 1	9/5/2023	Finished	NA	3.2	6.46	<RL	1.35	<RL	<RL	<RL	<RL	<RL	<RL	<RL	2.49	4.65	<RL	2.51	5.28	<RL	<RL	<RL	<RL	<RL	<RL	<RL	<RL	<RL
Cecil	MD0070027	Port Herman Beach	Wtp Well 1	8/1/2023	Finished	NA	<RL	<RL	<RL	<RL	<RL	<RL	<RL	<RL	<RL	<RL	<RL	<RL	<RL	<RL	<RL	<RL	<RL	<RL	<RL	<RL	<RL	<RL	<RL	<RL	<RL
Cecil	MD1070001	Bainbridge Elementary	Bainbridge Elementary	5/29/2024	Finished	NA	<RL	<RL	<RL	<RL	<RL	<RL	<RL	<RL	<RL	<RL	<RL	<RL	1.15	<RL	<RL	<RL	<RL	<RL	<RL	<RL	<RL	<RL	<RL	<RL	<RL
Cecil	MD1070005	Calvert Elementary	Wtp Calvert Elementary School	5/29/2024	Finished	NA	<RL	<RL	<RL	<RL	<RL	<RL	<RL	<RL	<RL	<RL	<RL	<RL	<RL	<RL	<RL	<RL	<RL	<RL	<RL	<RL	<RL	<RL	<RL	<RL	<RL
Cecil	MD1070011	Conowingo Elementary	Wtp 1 Conowingo Elem. Well 1	5/29/2024	Finished	NA	1.48	1.86	<RL	1.24	<RL	<RL	<RL	<RL	<RL	<RL	<RL	<RL	2.5	<RL	1.81	2.2	<RL	<RL	<RL	<RL	<RL	<RL	<RL	<RL	<RL
Cecil	MD1070014	Tri-State Christian Academy	Tri-State Christian Day Care	7/16/2024	Finished	NA	<RL	<RL	<RL	<RL	<RL	<RL	<RL	<RL	<RL	<RL	<RL	<RL	<RL	<RL	<RL	<RL	<RL	<RL	<RL	<RL	<RL	<RL	<RL	<RL	<RL
Cecil	MD1070020	Leeds Elementary	Wtp 1 Leeds Elem. Wells 1 & 2	5/29/2024	Finished	0.2	3.31	8.27	<RL	1.99	<RL	1.66	<RL	<RL	<RL	<RL	<RL	5.31	9.4	<RL	2.61	10.6	<RL	<RL	<RL	<RL	<RL	<RL	<RL	<RL	<RL
Cecil	MD1070026	Nazarene Day Care Center	Nazarene Day Care Center	11/7/2024	Finished	0.11712	2.96	6.34	<RL	4.24	<RL	1.15	<RL	<RL	<RL	<RL	<RL	1.89	4.66	<RL	2.49	4.9	<RL	<RL	<RL	<RL	<RL	<RL	<RL	<RL	<RL
Cecil	MD1070027	Rising Sun Elementary	Wtp 1 - Well 2	5/29/2024	Finished	NA	<RL	<RL	<RL	<RL	<RL	<RL	<RL	<RL	<RL	<RL	<RL	<RL	3.16	<RL	1.48	6.29	<RL	<RL	<RL	<RL	<RL	<RL	<RL	<RL	<RL
Cecil	MD1070027	Rising Sun Elementary	Wtp 1 - Well 2	7/30/2024	Finished	NA	<RL	<RL	<RL	<RL	<RL	<RL	<RL	<RL	<RL	<RL	<RL	<RL	3.32	<RL	1.5	6.05	<RL	<RL	<RL	<RL	<RL	<RL	<RL	<RL	<RL
Cecil	MD1070043	Elk Neck Elementary	Wtp 1 - Well 1	5/29/2024	Finished	NA	<RL	1.24	<RL	1.89	<RL	<RL	<RL	<RL	<RL	<RL	<RL	<RL	<RL	<RL	<RL	<RL	<RL	<RL	<RL	<RL	<RL	<RL	<RL	<RL	<RL
Cecil	MD1070044	Rising Sun High School	Wtp 1 - Well 1	5/29/2024	Finished	NA	<RL	<RL	<RL	<RL	<RL	<RL	<RL	<RL	<RL	<RL	<RL	<RL	1.16	<RL	1.07	1.26	<RL	<RL	<RL	<RL	<RL	<RL	<RL	<RL	<RL
Cecil	MD1070052	Alliant Techsystems Operations - Ng	Wtp - Thiokol Well A4	9/14/2023	Finished	NA	<RL	<RL	<RL	<RL	<RL	<RL	<RL	<RL	<RL	<RL	<RL	<RL	<RL	<RL	<RL	<RL	<RL	<RL	<RL	<RL	<RL	<RL	<RL	<RL	<RL
Cecil	MD1070053	Sandy Cove Ministries	Wtp 1 - Wells 1 & 2	9/21/2023	Finished	NA	<RL	<RL	<RL	<RL	<RL	<RL	<RL	<RL	<RL	<RL	<RL	<RL	<RL	<RL	<RL	<RL	<RL	<RL	<RL	<RL	<RL	<RL	<RL	<RL	<RL
Cecil	MD1070062	Warwick Mushroom Farm	Wells 1 & 2New & 4	8/1/2023	Finished	NA	<RL	<RL	<RL	<RL	<RL	<RL	<RL	<RL	<RL	<RL	<RL	<RL	<RL	<RL	<RL	<RL	<RL	<RL	<RL	<RL	<RL	<RL	<RL	<RL	<RL
Cecil	MD1070064	Old Dominion Electric-Wildcat	Wtp_Well 1 + Well 2	9/21/2023	Finished	NA	<RL	<RL	<RL	1.74	<RL	<RL	<RL	<RL	<RL	<RL	<RL	<RL	3.59	<RL	5.64	3.24	<RL	<RL	<RL	<RL	<RL	<RL	<RL	<RL	<RL
Cecil	MD1070065	Recovery Center Of America	Rca Recovery Center Wells 1 And 2	8/30/2023	Finished	NA	<RL	<RL	<RL	<RL	<RL	<RL	<RL	<RL	<RL	<RL	<RL	<RL	<RL	<RL	<RL	<RL	<RL	<RL	<RL	<RL	<RL	<RL	<RL	<RL	<RL
Cecil	MD1070066	Cecil County Central Landfill	Wtp- Solid Waste Mgmt	9/14/2023	Finished	NA	<RL	<RL	<RL	<RL	<RL	<RL	<RL	<RL	<RL	<RL	<RL	<RL	<RL	<RL	<RL	<RL	<RL	<RL	<RL	<RL	<RL	<RL	<RL	<RL	<RL
Cecil	MD1070067	Sunned Growers	Sunned Growers	8/1/2023	Finished	NA	<RL	<RL	<RL	<RL	<RL	<RL	<RL	<RL	<RL	<RL	<RL	<RL	<RL	<RL	<RL	<RL	<RL	<RL	<RL	<RL	<RL	<RL	<RL	<RL	<RL
Cecil	MD1070068	Ise America Inc.-Warwick Egg Processing	Common Header	8/1/2023	Finished	NA	<RL	<RL	<RL	<RL	<RL	<RL	<RL	<RL	<RL	<RL	<RL	<RL	<RL	<RL	<RL	<RL	<RL	<RL	<RL	<RL	<RL	<RL	<RL	<RL	<RL
Cecil	MD1070070	Complete Recycling	Common Header	9/21/2023	Finished	3.4	13.5	37	<RL	11.9	2.61	28.1	<RL	<RL	<RL	<RL	<RL	34.1	103	<RL	40.7	89.9	5.16	<RL	<RL	<RL	<RL	<RL	17.7	<RL	<RL
Cecil	MD1071211	Susquehanna Work Force Network	Wtp 1 - Well 1	8/9/2023	Finished	NA	<RL	10.1	<RL	1.06	<RL	<RL	<RL	<RL	<RL	<RL	<RL	3.54	5.18	<RL	5.77	4.47	<RL	<RL	<RL	<RL	<RL	<RL	<RL	<RL	<RL
Cecil	MD1071238	Shelter Cove Yacht And Marina Inc	Wtp 1 - Well 1	9/21/2023	Finished	NA	<RL	<RL	<RL	<RL	<RL	<RL	<RL	<RL	<RL	<RL	<RL	<RL	<RL	<RL	<RL	<RL	<RL	<RL	<RL	<RL	<RL	<RL	<RL	<RL	<RL

Phase 5 PFAS Sample Results

County	PWSID	System Name	Facility Source	Sample Collection Date	Sample Type	HI	PFOS	PFOA	HFPO-DA	PFBS	PFNA	PFHxS	11CI-PF3OUHS	ADONA	9CI-PF3ONS	PFDA	PFDOA	PFHpA	PFHxA	PFUnDA	PFBA	PFPeA	PFPeS	PFHpS	4-2 FTS	6-2 FTS	8-2 FTS	PFEESA	PFMPA	PFMBA	NFDHA
Cecil	MD1071244	Bayside Community Network	Wtp 1 - Well 1	8/9/2023	Finished	NA	<RL	2.29	<RL	<RL	<RL	<RL	<RL	<RL	<RL	<RL	<RL	<RL	<RL	<RL	<RL	<RL	<RL	<RL	<RL	<RL	<RL	<RL	<RL	<RL	<RL
Cecil	MD1071367	Chesapeake Care Res., David Lokey Ctr.	Well	8/1/2023	Finished	NA	<RL	<RL	<RL	<RL	<RL	<RL	<RL	<RL	<RL	<RL	<RL	<RL	<RL	<RL	<RL	<RL	<RL	<RL	<RL	<RL	<RL	<RL	<RL	<RL	<RL
Charles	MD0080063	Port Tobacco Dept Of Community Services	Wtp 1 Port Tobacco	12/5/2024	Finished	NA	<RL	<RL	<RL	<RL	<RL	<RL	<RL	<RL	<RL	<RL	<RL	<RL	<RL	<RL	<RL	<RL	<RL	<RL	<RL	<RL	<RL	<RL	<RL	<RL	<RL
Charles	MD1080002	Stethem Ed Cntr & James Craik Elementary	Well 3 Ch180102	5/21/2024	Raw	NA	<RL	<RL	<RL	<RL	<RL	<RL	<RL	<RL	<RL	<RL	<RL	<RL	<RL	<RL	<RL	<RL	<RL	<RL	<RL	<RL	<RL	<RL	<RL	<RL	<RL
Charles	MD1080002	Stethem Ed Cntr & James Craik Elementary	Well 4 Ch180103	5/21/2024	Raw	NA	<RL	<RL	<RL	<RL	<RL	<RL	<RL	<RL	<RL	<RL	<RL	<RL	<RL	<RL	<RL	<RL	<RL	<RL	<RL	<RL	<RL	<RL	<RL	<RL	<RL
Charles	MD1080005	Southern Maryland Christian Academy	Wtp 1 - Well 1	7/22/2024	Finished	NA	<RL	<RL	<RL	<RL	<RL	<RL	<RL	<RL	<RL	<RL	<RL	<RL	<RL	<RL	<RL	<RL	<RL	<RL	<RL	<RL	<RL	<RL	<RL	<RL	<RL
Charles	MD1080005	Southern Maryland Christian Academy	Wtp 2 - Well 2	7/22/2024	Finished	NA	<RL	<RL	<RL	<RL	<RL	<RL	<RL	<RL	<RL	<RL	<RL	<RL	<RL	<RL	<RL	<RL	<RL	<RL	<RL	<RL	<RL	<RL	<RL	<RL	<RL
Charles	MD1080007	Gale-Bailey Elementary	Well 3 Ch811443	5/21/2024	Raw	NA	<RL	<RL	<RL	<RL	<RL	<RL	<RL	<RL	<RL	<RL	<RL	<RL	<RL	<RL	<RL	<RL	<RL	<RL	<RL	<RL	<RL	<RL	<RL	<RL	<RL
Charles	MD1080015	Henry E. Lackey High School	Wtp 1 - Well 1	5/21/2024	Finished	NA	<RL	<RL	<RL	<RL	<RL	<RL	<RL	<RL	<RL	<RL	<RL	<RL	<RL	<RL	<RL	<RL	<RL	<RL	<RL	<RL	<RL	<RL	<RL	<RL	<RL
Charles	MD1080016	Malcom Elementary School	Malcom Es Well 1R Ch140148	5/21/2024	Raw	NA	<RL	<RL	<RL	<RL	<RL	<RL	<RL	<RL	<RL	<RL	<RL	<RL	<RL	<RL	<RL	<RL	<RL	<RL	<RL	<RL	<RL	<RL	<RL	<RL	<RL
Charles	MD1080016	Malcom Elementary School	Malcom Es Well 2R Ch140316	5/21/2024	Raw	NA	<RL	<RL	<RL	<RL	<RL	<RL	<RL	<RL	<RL	<RL	<RL	<RL	<RL	<RL	<RL	<RL	<RL	<RL	<RL	<RL	<RL	<RL	<RL	<RL	<RL
Charles	MD1080017	Mattawoman W.W.T.P.	Wtp 1 - Wells 3 & 4	11/26/2024	Finished	NA	<RL	<RL	<RL	<RL	<RL	<RL	<RL	<RL	<RL	<RL	<RL	<RL	<RL	<RL	<RL	<RL	<RL	<RL	<RL	<RL	<RL	<RL	<RL	<RL	<RL
Charles	MD1080019	Maurice J. McDonough High School	Well 1R Ch190312	5/21/2024	Raw	NA	<RL	<RL	<RL	<RL	<RL	<RL	<RL	<RL	<RL	<RL	<RL	<RL	<RL	<RL	<RL	<RL	<RL	<RL	<RL	<RL	<RL	<RL	<RL	<RL	<RL
Charles	MD1080021	Mt. Hope/Nanjemoy Elementary School	Wtp 1 - Mt. Hope Elementary	6/25/2024	Finished	NA	<RL	<RL	<RL	<RL	<RL	<RL	<RL	<RL	<RL	<RL	<RL	<RL	<RL	<RL	<RL	<RL	<RL	<RL	<RL	<RL	<RL	<RL	<RL	<RL	<RL
Charles	MD1080022	Naval Research Lab Blossom Pt (Navy Fac)	Wtp 1	10/8/2024	Finished	NA	<RL	<RL	<RL	<RL	<RL	<RL	<RL	<RL	<RL	<RL	<RL	<RL	<RL	<RL	<RL	<RL	<RL	<RL	<RL	<RL	<RL	<RL	<RL	<RL	<RL
Charles	MD1080023	Piccowaxen Middle School	Wtp 1 - Piccowaxen Ms	6/25/2024	Finished	NA	<RL	<RL	<RL	<RL	<RL	<RL	<RL	<RL	<RL	<RL	<RL	<RL	<RL	<RL	<RL	<RL	<RL	<RL	<RL	<RL	<RL	<RL	<RL	<RL	<RL
Charles	MD1080025	Victorious Kids / Master's Child Church	Star Of The Sea	5/22/2024	Finished	NA	<RL	<RL	<RL	<RL	<RL	<RL	<RL	<RL	<RL	<RL	<RL	<RL	<RL	<RL	<RL	<RL	<RL	<RL	<RL	<RL	<RL	<RL	<RL	<RL	<RL
Charles	MD1080026	St. Marys Bryantown Catholic School	Wtp 1 - St. Marys School Well	5/28/2024	Finished	NA	<RL	<RL	<RL	<RL	<RL	<RL	<RL	<RL	<RL	<RL	<RL	<RL	<RL	<RL	<RL	<RL	<RL	<RL	<RL	<RL	<RL	<RL	<RL	<RL	<RL
Charles	MD1080027	St. Peters School	Wtp 1 - New Well	5/28/2024	Finished	NA	<RL	<RL	<RL	<RL	<RL	<RL	<RL	<RL	<RL	<RL	<RL	<RL	<RL	<RL	<RL	<RL	<RL	<RL	<RL	<RL	<RL	<RL	<RL	<RL	<RL
Charles	MD1080030	T.C. Martin Elementary School	Wtp 1 - Martin Es	7/22/2024	Finished	NA	<RL	<RL	<RL	<RL	<RL	<RL	<RL	<RL	<RL	<RL	<RL	<RL	<RL	<RL	<RL	<RL	<RL	<RL	<RL	<RL	<RL	<RL	<RL	<RL	<RL
Charles	MD1080031	Dr. Thomas Higdon Elementary	Wtp 1 - Higdon Es	6/25/2024	Finished	NA	<RL	<RL	<RL	<RL	<RL	<RL	<RL	<RL	<RL	<RL	<RL	<RL	<RL	<RL	<RL	<RL	<RL	<RL	<RL	<RL	<RL	<RL	<RL	<RL	<RL
Charles	MD1080033	Grace Christian Academy	Well 1 & 2	5/17/2024	Finished	NA	<RL	<RL	<RL	<RL	<RL	<RL	<RL	<RL	<RL	<RL	<RL	<RL	<RL	<RL	<RL	<RL	<RL	<RL	<RL	<RL	<RL	<RL	<RL	<RL	<RL
Charles	MD1080038	College Of Southern Md - Main Campus	St Well (No 3) Ch920636	5/21/2024	Raw	NA	<RL	<RL	<RL	<RL	<RL	<RL	<RL	<RL	<RL	<RL	<RL	<RL	<RL	<RL	<RL	<RL	<RL	<RL	<RL	<RL	<RL	<RL	<RL	<RL	<RL
Charles	MD1080038	College Of Southern Md - Main Campus	Tc Well (No 2) Ch700008	5/21/2024	Raw	NA	<RL	<RL	<RL	<RL	<RL	<RL	<RL	<RL	<RL	<RL	<RL	<RL	<RL	<RL	<RL	<RL	<RL	<RL	<RL	<RL	<RL	<RL	<RL	<RL	<RL
Charles	MD1080041	Southern Md Electric Cooperative	Wtp 1 - Well 1 & 2	11/12/2024	Finished	NA	<RL	<RL	<RL	<RL	<RL	<RL	<RL	<RL	<RL	<RL	<RL	<RL	<RL	<RL	<RL	<RL	<RL	<RL	<RL	<RL	<RL	<RL	<RL	<RL	<RL
Charles	MD1080043	Coll. Of So. Md Trades & Energy Training	Treatment Plant - Well 1 (Ch140111)	5/21/2024	Raw	NA	<RL	<RL	<RL	<RL	<RL	<RL	<RL	<RL	<RL	<RL	<RL	<RL	<RL	<RL	<RL	<RL	<RL	<RL	<RL	<RL	<RL	<RL	<RL	<RL	<RL
Charles	MD1080044	College Of So. Md Trades & Energy Training	Wtp 01 Ch180230	5/20/2024	Finished	NA	<RL	<RL	<RL	<RL	<RL	<RL	<RL	<RL	<RL	<RL	<RL	<RL	<RL	<RL	<RL	<RL	<RL	<RL	<RL	<RL	<RL	<RL	<RL	<RL	<RL
Charles	MD1081072	Port Tobacco Rv Resort	Wellhead	12/12/2024	Finished	NA	<RL	<RL	<RL	<RL	<RL	<RL	<RL	<RL	<RL	<RL	<RL	<RL	<RL	<RL	<RL	<RL	<RL	<RL	<RL	<RL	<RL	<RL	<RL	<RL	<RL
Charles	MD1081098	Dentsville Trading Company, Inc.	Wtp 1 Well 1	12/3/2024	Finished	NA	<RL	<RL	<RL	<RL	<RL	<RL	<RL	<RL	<RL	<RL	<RL	<RL	<RL	<RL	<RL	<RL	<RL	<RL	<RL	<RL	<RL	<RL	<RL	<RL	<RL
Dorchester	MD1090001	Bloch & Guggenheimer Co.	Wtp- Wells 1 & 2	9/17/2024	Finished	0.1	3.07	2.06	<RL	1.75	<RL	1.39	<RL	<RL	<RL	<RL	<RL	0.856	1.2	<RL	<RL	0.985	<RL	<RL	<RL	<RL	<RL	<RL	<RL	<RL	<RL
Dorchester	MD1090003	Amick Farms	Wtp- Poe	9/18/2024	Finished	NA	1.42	1.37	<RL	1.24	<RL	<RL	<RL	<RL	<RL	<RL	<RL	<RL	0.592	<RL	<RL	0.579	<RL	<RL	<RL	<RL	<RL	<RL	<RL	<RL	<RL
Dorchester	MD1090008	Warwick Manor Behavior Health	Wtp-Poe	9/18/2024	Finished	NA	<RL	<RL	<RL	<RL	<RL	<RL	<RL	<RL	<RL	<RL	<RL	<RL	<RL	<RL	<RL	<RL	<RL	<RL	<RL	<RL	<RL	<RL	<RL	<RL	<RL
Dorchester	MD1090009	Vision Quest Morning Star Academy	Women's Bathroom Office	12/9/2024	Finished	NA	<RL	<RL	<RL	<RL	<RL	<RL	<RL	<RL	<RL	<RL	<RL	<RL	<RL	<RL	<RL	<RL	<RL	<RL	<RL	<RL	<RL	<RL	<RL	<RL	<RL
Dorchester	MD1090010	N. Dorchester Middle & High Schools	New Well 1 - Do150133	6/27/2024	Raw	NA	<RL	<RL	<RL	<RL	<RL	<RL	<RL	<RL	<RL	<RL	<RL	<RL	<RL	<RL	<RL	<RL	<RL	<RL	<RL	<RL	<RL	<RL	<RL	<RL	<RL
Dorchester	MD1090010	N. Dorchester Middle & High Schools	New Well 2 - Do150134	6/27/2024	Raw	NA	<RL	<RL	<RL	<RL	<RL	<RL	<RL	<RL	<RL	<RL	<RL	<RL	<RL	<RL	<RL	<RL	<RL	<RL	<RL	<RL	<RL	<RL	<RL	<RL	<RL
Dorchester	MD1090014	South Dorchester School	Pumphouse - Well 2	6/25/2024	Finished	NA	<RL	<RL	<RL	<RL	<RL	<RL	<RL	<RL	<RL	<RL	<RL	<RL	<RL	<RL	<RL	<RL	<RL	<RL	<RL	<RL	<RL	<RL	<RL	<RL	<RL
Dorchester	MD1090018	Horn Point Lab - Ctr. For Env. Science	Wtp- Marine Science Well	9/17/2024	Finished	NA	<RL	<RL	<RL	<RL	<RL	<RL	<RL	<RL	<RL	<RL	<RL	<RL	<RL	<RL	<RL	<RL	<RL	<RL	<RL	<RL	<RL	<RL	<RL	<RL	<RL
Dorchester	MD1090027	Darling Ingredients Company	Wtp 1 - Well 1	9/25/2024	Finished	NA	<RL	<RL	<RL	<RL	<RL	<RL	<RL	<RL	<RL	<RL	<RL	<RL	<RL	<RL	<RL	<RL	<RL	<RL	<RL	<RL	<RL	<RL	<RL	<RL	<RL
Dorchester	MD1091170	Preston Auto Plex	Poe - Mazda Kitchen	9/23/2024	Finished	NA	<RL	<RL	<RL	<RL	<RL	<RL	<RL	<RL	<RL	<RL	<RL	<RL	<RL	<RL	<RL	<RL	<RL	<RL	<RL	<RL	<RL	<RL	<RL	<RL	<RL
Dorchester	MD1091170	Preston Auto Plex	Poe-Mazda Kitchen	9/23/2024	Finished	NA	<RL	<RL	<RL	<RL	<RL	<RL	<RL	<RL	<RL	<RL	<RL	<RL	<RL	<RL	<RL	<RL	<RL	<RL	<RL	<RL	<RL	<RL	<RL	<RL	<RL

Phase 5 PFAS Sample Results

County	PWSID	System Name	Facility Source	Sample Collection Date	Sample Type	HI	PFOS	PFOA	HFPO-DA	PFBS	PFNA	PFHxS	11CI-PF3OUIS	ADONA	9CI-PF3ONS	PFDA	PFDOA	PFHpA	PFHxA	PFUnDA	PFBA	PFPeA	PFPeS	PFHpS	4-2 FTS	6-2 FTS	8-2 FTS	PFEESA	PFMPA	PFMBA	NFDHA
Dorchester	MD1091170	Preston Auto Plex Ford Dealership	Comfort Sink Waiting Room	11/12/2024	Finished	NA	<RL	<RL	<RL	<RL	<RL	<RL	<RL	<RL	<RL	<RL	<RL	<RL	<RL	<RL	<RL	<RL	<RL	<RL	<RL	<RL	<RL	<RL	<RL	<RL	<RL
Dorchester	MD1091170	Preston Auto Plex Hyundai Dealership	Washub In Hallway	11/12/2024	Finished	NA	<RL	<RL	<RL	<RL	<RL	<RL	<RL	<RL	<RL	<RL	<RL	<RL	<RL	<RL	<RL	<RL	<RL	<RL	<RL	<RL	<RL	<RL	<RL	<RL	<RL
Frederick	MD1100008	Green Valley Elementary	New Well 1 GWUDI F043761	7/18/2024	Raw	0.3	5.72	20	<RL	2.39	1.59	1.63	<RL	<RL	<RL	<RL	<RL	11.7	26.4	<RL	9.9	25	<RL	<RL	<RL	<RL	<RL	<RL	<RL	<RL	<RL
Frederick	MD1100008	Green Valley Elementary	New Well 2 F043762	7/18/2024	Raw	0.4	12.7	22.8	<RL	3.57	1.69	1.92	<RL	<RL	<RL	1.65	<RL	11.6	31.4	<RL	11	32	<RL	<RL	<RL	<RL	<RL	<RL	<RL	<RL	<RL
Frederick	MD1100010	Hyatt Park #1	Hyatt Park Wtp - Well 1	7/31/2023	Finished	3.7	233	51.9	<RL	7.06	6.86	27	<RL	<RL	<RL	6.16	<RL	27.2	26.5	<RL	13.5	30.9	3.03	3	<RL	<RL	<RL	<RL	<RL	<RL	<RL
Frederick	MD1100011	T.E.C. Building Partnership	Tec Bldg. Wtp - Old & New Wells	7/31/2023	Finished	3.8	236	48.2	<RL	7.56	6.77	28.4	<RL	<RL	<RL	5.8	<RL	23.5	27.8	<RL	12.6	34.3	3.36	2.89	<RL	<RL	<RL	<RL	<RL	<RL	<RL
Frederick	MD1100012	Jefferson Pike Warehouse Condo Inc..	Wtp - Well 1	8/1/2023	Finished	0.6	58.5	19.8	<RL	3.55	2.62	2.68	<RL	<RL	<RL	3.07	<RL	9.2	11.6	<RL	6.22	13.9	<RL	<RL	<RL	<RL	<RL	<RL	<RL	<RL	<RL
Frederick	MD1100013	Kempstown Elementary	Kempstown El Wtp - Wells 1 & 2	7/18/2024	Finished	0.1	6.11	6.45	<RL	6.16	1.07	<RL	<RL	<RL	<RL	<RL	<RL	2.51	4.74	<RL	3.02	4.45	<RL	<RL	<RL	1.91	<RL	<RL	<RL	<RL	<RL
Frederick	MD1100015	Lewistown Elementary	Lewistown Es New Well 1 F043749	7/16/2024	Raw	0.2	5.38	2.87	<RL	2.74	<RL	1.67	<RL	<RL	<RL	<RL	<RL	1.53	2.97	<RL	3.99	3.18	<RL	<RL	<RL	<RL	<RL	<RL	<RL	<RL	<RL
Frederick	MD1100015	Lewistown Elementary	Lewistown Es New Well 2 F050693	7/16/2024	Raw	NA	1.39	<RL	<RL	<RL	<RL	<RL	<RL	<RL	<RL	<RL	<RL	<RL	<RL	<RL	<RL	<RL	<RL	<RL	<RL	<RL	<RL	<RL	<RL	<RL	<RL
Frederick	MD1100016	Liberty Elementary	Liberty Elementary F738967	7/18/2024	Raw	0.4	16.1	18	<RL	2.85	1.99	1.71	<RL	<RL	<RL	<RL	<RL	10.3	27.4	<RL	9.63	30.8	<RL	<RL	<RL	<RL	<RL	<RL	<RL	<RL	<RL
Frederick	MD1100016	Liberty Elementary	Liberty Elementary F811413	7/18/2024	Raw	0.4	12.4	15.1	<RL	2.96	1.01	3.19	<RL	<RL	<RL	<RL	<RL	7.97	16.5	<RL	7.02	18.2	<RL	<RL	<RL	<RL	<RL	<RL	<RL	<RL	<RL
Frederick	MD1100017	Linganore High School	Linganore Hs Well 1 F037764	7/18/2024	Raw	0.4	16.1	10.7	<RL	7.12	<RL	3.85	<RL	<RL	<RL	<RL	<RL	5.29	13.2	<RL	7.41	17.8	1.25	<RL	<RL	<RL	<RL	<RL	<RL	<RL	<RL
Frederick	MD1100017	Linganore High School	Linganore Hs Well 2 F732413	7/18/2024	Raw	0.3	14.3	8.62	<RL	6.47	<RL	2.91	<RL	<RL	<RL	<RL	<RL	4.3	11.2	<RL	6.66	14.4	1.22	<RL	<RL	<RL	<RL	<RL	<RL	<RL	<RL
Frederick	MD1100017	Linganore High School	Linganore Hs Well 3 F732406	7/18/2024	Raw	0.1	5.96	6.16	<RL	2.67	1.01	<RL	<RL	<RL	<RL	<RL	<RL	4.48	26.5	<RL	12.3	20.1	<RL	<RL	<RL	<RL	<RL	<RL	<RL	<RL	<RL
Frederick	MD1100017	Linganore High School	Linganore Hs Well 4 F814783	7/18/2024	Raw	NA	1.69	1.11	<RL	<RL	<RL	<RL	<RL	<RL	<RL	<RL	<RL	<RL	1.45	<RL	1.95	1.78	<RL	<RL	<RL	<RL	<RL	<RL	<RL	<RL	<RL
Frederick	MD1100018	Long Fence Company	Wtp - Well 1	7/31/2023	Finished	NA	4.5	3.77	<RL	11.3	<RL	<RL	<RL	<RL	<RL	<RL	<RL	1.97	3.6	<RL	3.61	6.42	<RL	<RL	<RL	<RL	<RL	<RL	<RL	<RL	<RL
Frederick	MD1100020	Mountain Manor Treatment Center	Building A Wtp - Well 3	8/1/2023	Finished	NA	<RL	3.1	<RL	1.06	<RL	<RL	<RL	<RL	<RL	<RL	<RL	7.07	11.4	<RL	7.12	21.6	<RL	<RL	<RL	<RL	<RL	<RL	<RL	<RL	<RL
Frederick	MD1100020	Mountain Manor Treatment Center	Main Wtp - Wells 1 & 2	8/1/2023	Finished	0.6	9.18	4.58	<RL	2.88	<RL	5.5	<RL	<RL	<RL	<RL	<RL	2.6	4.78	<RL	4.43	5.98	<RL	<RL	<RL	<RL	<RL	<RL	<RL	<RL	<RL
Frederick	MD1100024	New Market Shopping Center	Wtp 1 Well 1	8/17/2023	Finished	NA	<RL	<RL	<RL	<RL	<RL	<RL	<RL	<RL	<RL	<RL	<RL	<RL	<RL	<RL	<RL	<RL	<RL	<RL	<RL	<RL	<RL	<RL	<RL	<RL	<RL
Frederick	MD1100025	New Midway Elementary	New Midway Elem 1 (Outside) Nopermit	7/18/2024	Raw	0.3	27.1	11.1	<RL	2.4	<RL	3.03	<RL	<RL	<RL	<RL	<RL	4.6	12	<RL	5.46	11.6	<RL	<RL	<RL	<RL	<RL	<RL	<RL	<RL	<RL
Frederick	MD1100025	New Midway Elementary	New Midway Elem 2 (Basement) Nopermit	7/18/2024	Raw	0.2	7.17	3.84	<RL	1.56	<RL	1.54	<RL	<RL	<RL	<RL	<RL	1.4	2.95	<RL	1.81	2.47	<RL	<RL	<RL	<RL	<RL	<RL	<RL	<RL	<RL
Frederick	MD1100030	Sabillasville Elementary	Wtp - Well 1	11/6/2024	Finished	NA	2.17	3.43	<RL	<RL	<RL	1.14	<RL	<RL	<RL	<RL	<RL	1.38	3.63	<RL	<RL	3.82	<RL	<RL	<RL	3.19	<RL	<RL	<RL	<RL	<RL
Frederick	MD1100033	Valley Elementary	Wtp - Well 1	7/16/2024	Finished	0.3	6.02	9.89	<RL	1.95	<RL	2.94	<RL	<RL	<RL	<RL	<RL	4.26	7.53	<RL	3.62	9.31	<RL	<RL	<RL	<RL	<RL	<RL	<RL	<RL	<RL
Frederick	MD1100034	Woltsville Elementary	Woltsville Elem Well 1 F030050	7/16/2024	Raw	NA	31.6	6.72	<RL	<RL	5.43	<RL	<RL	<RL	<RL	<RL	<RL	2.22	12.8	<RL	3.88	14.4	<RL	<RL	<RL	<RL	<RL	<RL	<RL	<RL	<RL
Frederick	MD1100034	Woltsville Elementary	Woltsville Elem New Well F044423	7/16/2024	Raw	NA	<RL	<RL	<RL	<RL	<RL	<RL	<RL	<RL	<RL	<RL	<RL	<RL	<RL	<RL	<RL	<RL	<RL	<RL	<RL	<RL	<RL	<RL	<RL	<RL	<RL
Frederick	MD1100036	Yellow Springs Elementary	Yellow Springs Es Well 1 F043763	7/16/2024	Raw	NA	<RL	<RL	<RL	<RL	<RL	<RL	<RL	<RL	<RL	<RL	<RL	<RL	3.79	<RL	2.49	7.23	<RL	<RL	<RL	<RL	<RL	<RL	<RL	<RL	<RL
Frederick	MD1100036	Yellow Springs Elementary	Yellow Springs Es Well 2 F050336	7/16/2024	Raw	NA	<RL	<RL	<RL	<RL	<RL	<RL	<RL	<RL	<RL	<RL	<RL	<RL	<RL	<RL	<RL	<RL	<RL	<RL	<RL	<RL	<RL	<RL	<RL	<RL	<RL
Frederick	MD1100045	Hyatt Center	Wtp - Well 2	7/31/2023	Finished	NA	<RL	4.79	<RL	4.23	<RL	<RL	<RL	<RL	<RL	<RL	<RL	2.38	4.05	<RL	3.22	4.26	<RL	<RL	10.2	<RL	<RL	<RL	<RL	<RL	<RL
Frederick	MD1100048	Burdette Brothers	Wtp - Well 2	7/31/2023	Finished	NA	2.91	2.42	<RL	1.01	<RL	<RL	<RL	<RL	<RL	<RL	<RL	<RL	<RL	<RL	1.56	<RL	<RL	<RL	<RL	<RL	<RL	<RL	<RL	<RL	<RL
Frederick	MD1100058	Green Valley Plaza	Wtp - Wells 1, 2, 3, 4, 5	8/17/2023	Finished	NA	<RL	<RL	<RL	2.96	<RL	<RL	<RL	<RL	<RL	<RL	<RL	<RL	5.22	<RL	6.9	17.1	<RL	<RL	<RL	<RL	<RL	<RL	<RL	<RL	<RL
Frederick	MD1100059	Green Valley Shopping Center	Wells 1 & 2	8/17/2023	Finished	0.7	10.2	13	<RL	4.59	3.87	2.45	<RL	<RL	<RL	<RL	<RL	5.21	14.8	<RL	8.47	17.1	<RL	<RL	<RL	<RL	<RL	<RL	<RL	<RL	<RL
Frederick	MD1100062	Lucy School (Ecofarm, Inc.)	Wtp 1 Well 1	11/6/2024	Finished	NA	<RL	<RL	<RL	<RL	<RL	<RL	<RL	<RL	<RL	<RL	<RL	<RL	0.679	<RL	<RL	0.76	<RL	<RL	<RL	<RL	<RL	<RL	<RL	<RL	<RL
Frederick	MD1100068	Knowledge Farms	Wtp - Well 1	7/31/2023	Finished	NA	<RL	2.74	<RL	8.06	<RL	<RL	<RL	<RL	<RL	<RL	<RL	2.07	3.95	<RL	3.83	3.59	<RL	<RL	<RL	<RL	<RL	<RL	<RL	<RL	<RL
Frederick	MD1100071	Buckeystown Veterinary Hospital	Wtp - Well 1	7/31/2023	Finished	NA	<RL	<RL	<RL	1.26	<RL	<RL	<RL	<RL	<RL	<RL	<RL	<RL	<RL	<RL	2.63	<RL	<RL	<RL	<RL	<RL	<RL	<RL	<RL	<RL	<RL
Frederick	MD1100072	Childrens Center Of Monrovia	Wtp - Well 1	11/6/2024	Finished	0.09665	<RL	1.5	<RL	6.3	<RL	0.935	<RL	<RL	<RL	<RL	<RL	1.61	5.24	<RL	3.1	5.82	<RL	<RL	<RL	<RL	<RL	<RL	<RL	<RL	<RL
Frederick	MD1100073	Breit - 3951 Dartmouth Ct	1100073_Tp01	7/31/2023	Finished	0.3	3.72	<RL	<RL	1.39	<RL	2.46	<RL	<RL	<RL	<RL	<RL	1.61	3.73	<RL	2.67	3.17	<RL	<RL	<RL	<RL	<RL	<RL	<RL	<RL	<RL
Frederick	MD1100074	Breit - 4780 Winchester Boulevard	1100074_Ch01 Well 1	7/31/2023	Finished	0.3	<RL	16.6	<RL	1.97	3.44	<RL	<RL	<RL	<RL	<RL	<RL	4.98	4.31	<RL	3.12	2.93	<RL	<RL	<RL	<RL	<RL	<RL	<RL	<RL	<RL
Frederick	MD1100077	Copper Hill Corporate Center	Wtp Well 1	8/29/2023	Finished	NA	<RL	<RL	<RL	1.31	<RL	<RL	<RL	<RL	<RL	<RL	<RL	<RL	<RL	<RL	<RL	<RL	<RL	<RL	<RL	<RL	<RL	<RL	<RL	<RL	<RL
Frederick	MD1100078	Miss Loretta'S Early Learning Center	Wtp01 - Well 1	7/18/2024	Finished	NA	1.79	3.22	<RL	1.41	<RL	<RL	<RL	<RL	<RL	<RL	<RL	1.38	3.38	<RL	3.87	5.28	<RL	<RL	<RL	<RL	<RL	<RL	<RL	<RL	<RL

Phase 5 PFAS Sample Results

County	PWSID	System Name	Facility Source	Sample Collection Date	Sample Type	HI	PFOS	PFOA	HFPO-DA	PFBS	PFNA	PFHxS	11CI-PF3OUIS	ADONA	9CI-PF3ONS	PFDA	PFDOA	PFHpA	PFHxA	PFUnDA	PFBA	PFPeA	PFPeS	PFHpS	4-2 FTS	6-2 FTS	8-2 FTS	PFEESA	PFMPA	PFMBA	NFDHA
Frederick	MD1101011	Beckleys Camping Center	Pumphouse - Beckleys Well	8/1/2023	Finished	NA	3.94	4.04	<RL	6.1	<RL	<RL	<RL	<RL	<RL	<RL	<RL	1.55	4.61	<RL	2.93	3.72	<RL	<RL	<RL	<RL	<RL	<RL	<RL	<RL	<RL
Frederick	MD1101233	The Ranch, Inc.	Wtp 1 - Well 3, 4, 5	8/1/2023	Finished	0.3	10.3	9.86	<RL	6.28	3.08	<RL	<RL	<RL	<RL	<RL	<RL	3.36	8.42	<RL	3.38	12.8	<RL	<RL	<RL	<RL	<RL	<RL	<RL	<RL	<RL
Frederick	MD1101338	Little Lights Child Ctr/First Baptist Ch	Well	7/16/2024	Finished	NA	<RL	1.56	<RL	1.69	<RL	<RL	<RL	<RL	<RL	<RL	<RL	1.04	2.29	<RL	1.34	2.85	<RL	<RL	<RL	<RL	<RL	<RL	<RL	<RL	<RL
Frederick	MD1101341	Breit - 4840/4844 Winchester Boulevard	North Building Wtr	7/31/2023	Finished	NA	<RL	4.58	<RL	1.97	<RL	<RL	<RL	<RL	<RL	<RL	<RL	5.68	14.1	<RL	7.98	15.5	<RL	<RL	<RL	<RL	<RL	<RL	<RL	<RL	<RL
Frederick	MD1101341	Breit - 4840/4844 Winchester Boulevard	Wtp - Well 1	7/31/2023	Finished	NA	<RL	<RL	<RL	<RL	<RL	<RL	<RL	<RL	<RL	<RL	<RL	<RL	<RL	<RL	<RL	<RL	<RL	<RL	<RL	<RL	<RL	<RL	<RL	<RL	<RL
Garrett	MD1110009	Route 40 Elementary School	New Route 40 Well Ga951099	7/31/2024	Raw	NA	<RL	<RL	<RL	<RL	<RL	<RL	<RL	<RL	<RL	<RL	<RL	<RL	<RL	<RL	<RL	<RL	<RL	<RL	<RL	<RL	<RL	<RL	<RL	<RL	<RL
Garrett	MD1110009	Route 40 Elementary School	Route 40 Well Ga942296	7/31/2024	Raw	NA	<RL	<RL	<RL	1.91	<RL	<RL	<RL	<RL	<RL	<RL	<RL	<RL	<RL	<RL	<RL	<RL	<RL	<RL	<RL	<RL	<RL	<RL	<RL	<RL	<RL
Garrett	MD1110011	Swan Meadow Elementary School	Swan Meadow Wtp - New Well	7/31/2024	Raw	NA	<RL	<RL	<RL	<RL	<RL	<RL	<RL	<RL	<RL	<RL	<RL	<RL	<RL	<RL	<RL	<RL	<RL	<RL	<RL	<RL	<RL	<RL	<RL	<RL	<RL
Garrett	MD1110021	Rigidply Rafter	Rigidply Rafter Wtp - Well	8/4/2023	Finished	NA	<RL	<RL	<RL	<RL	<RL	<RL	<RL	<RL	<RL	<RL	<RL	<RL	<RL	<RL	<RL	<RL	<RL	<RL	<RL	<RL	<RL	<RL	<RL	<RL	<RL
Garrett	MD1110023	Gloftely Enterprises	Wtp - Well 1	8/4/2023	Finished	NA	<RL	2.38	<RL	1.15	<RL	<RL	<RL	<RL	<RL	<RL	<RL	<RL	<RL	<RL	1.56	<RL	<RL	<RL	<RL	<RL	<RL	<RL	<RL	<RL	<RL
Garrett	MD1110025	Cherry Hill Assisted Living	Wtp 1 Well 1	8/4/2023	Finished	NA	<RL	<RL	<RL	<RL	<RL	<RL	<RL	<RL	<RL	<RL	<RL	<RL	<RL	<RL	<RL	<RL	<RL	<RL	<RL	<RL	<RL	<RL	<RL	<RL	<RL
Garrett	MD1110028	Pilot Travel Center & Arbys Restaurant	Wtp 1 - Well 2	8/4/2023	Finished	NA	<RL	<RL	<RL	<RL	<RL	<RL	<RL	<RL	<RL	<RL	<RL	<RL	<RL	<RL	<RL	<RL	<RL	<RL	<RL	<RL	<RL	<RL	<RL	<RL	<RL
Harford	MD1120004	Churchville Presby.Church & Day Care	Day Care Center Well 1	7/22/2024	Finished	0.2	17	35	<RL	9.27	<RL	2.08	<RL	<RL	<RL	<RL	<RL	2.76	7.39	<RL	3.2	5.39	<RL	<RL	<RL	<RL	<RL	<RL	<RL	<RL	<RL
Harford	MD1120005	Churchville Elementary School	Well 2 Nopermit Ha005W2	6/17/2024	Raw	NA	2.35	2.27	<RL	<RL	<RL	<RL	<RL	<RL	<RL	<RL	<RL	1.87	<RL	1.09	1.94	<RL	<RL	<RL	<RL	<RL	<RL	<RL	<RL	<RL	<RL
Harford	MD1120005	Churchville Elementary School	Well 3 Ha946007	6/17/2024	Raw	NA	4.93	6.48	<RL	2.13	<RL	<RL	<RL	<RL	<RL	<RL	<RL	2.56	11.1	<RL	3.81	14.4	<RL	<RL	<RL	<RL	<RL	<RL	<RL	<RL	<RL
Harford	MD1120007	Dubin Elementary School	Well 2 Nopermit Ha007W2	6/17/2024	Raw	0.5	7.12	9.02	<RL	1.58	1.15	3.67	<RL	<RL	<RL	<RL	<RL	3.4	5.74	<RL	3.03	6.46	<RL	<RL	<RL	<RL	<RL	<RL	<RL	<RL	<RL
Harford	MD1120007	Dubin Elementary School	Well 3 Ha946475	6/17/2024	Raw	NA	6.56	5.33	<RL	<RL	<RL	<RL	<RL	<RL	<RL	<RL	<RL	2.13	4.35	<RL	1.94	3.91	<RL	<RL	<RL	<RL	<RL	<RL	<RL	<RL	<RL
Harford	MD1120008	Fair Meadows	Fair Meadows	9/13/2023	Finished	NA	<RL	<RL	<RL	<RL	<RL	<RL	<RL	<RL	<RL	<RL	<RL	<RL	<RL	<RL	<RL	<RL	<RL	<RL	<RL	<RL	<RL	<RL	<RL	<RL	<RL
Harford	MD1120012	Fallston High School	Well 1 Ha731746	6/17/2024	Raw	15.7	100	16.9	<RL	14	27.8	129	<RL	<RL	<RL	<RL	<RL	15.4	58.1	<RL	12.5	72.8	16.8	5.21	<RL	13.1	<RL	<RL	<RL	<RL	<RL
Harford	MD1120012	Fallston High School	Well 2 Ha943865	6/17/2024	Raw	3.5	58.5	4.52	<RL	3.72	16.2	19	<RL	<RL	<RL	<RL	<RL	4.19	11.4	<RL	2.87	9.96	2.94	2.44	<RL	3.39	<RL	<RL	<RL	<RL	<RL
Harford	MD1120012	Fallston High School	Fountain Bottle Fill @ Main Hallway	8/6/2024	Finished	NA	<RL	<RL	<RL	<RL	<RL	<RL	<RL	<RL	<RL	<RL	<RL	<RL	6.58	<RL	7.19	53.3	<RL	<RL	<RL	<RL	<RL	<RL	<RL	<RL	<RL
Harford	MD1120012	Fallston High School	Fountain Bottle Fill @ Rm121	8/6/2024	Finished	11.2	86.1	15.1	<RL	12.3	26.2	86.2	<RL	<RL	<RL	<RL	<RL	11.3	41.8	<RL	9.44	51.2	8.97	3.28	<RL	6.23	<RL	<RL	<RL	<RL	<RL
Harford	MD1120012	Fallston High School	Fountain Bottle Fill @ Rm117	8/6/2024	Finished	NA	<RL	<RL	<RL	<RL	<RL	<RL	<RL	<RL	<RL	<RL	<RL	<RL	<RL	<RL	<RL	<RL	<RL	<RL	<RL	<RL	<RL	<RL	<RL	<RL	<RL
Harford	MD1120012	Fallston High School	Fountain Bottle Fill @ Cafeteria	8/6/2024	Finished	NA	<RL	<RL	<RL	<RL	<RL	<RL	<RL	<RL	<RL	<RL	<RL	<RL	<RL	<RL	11.8	<RL	<RL	<RL	<RL	<RL	<RL	<RL	<RL	<RL	<RL
Harford	MD1120014	Forest Hill Elementary School	Well 1 Ha880602	6/13/2024	Raw	0.2	3.19	7.66	<RL	4.43	<RL	1.57	<RL	<RL	<RL	<RL	<RL	7.57	11.2	<RL	4.49	13.3	<RL	<RL	<RL	<RL	<RL	<RL	<RL	<RL	<RL
Harford	MD1120014	Forest Hill Elementary School	Well 2 Ha943593	6/13/2024	Raw	0.2	3.04	7.05	<RL	4.92	<RL	1.64	<RL	<RL	<RL	<RL	<RL	5.62	8.41	<RL	3.73	10.6	<RL	<RL	<RL	<RL	<RL	<RL	<RL	<RL	<RL
Harford	MD1120016	Harford Center Inc.	Well 1	8/30/2023	Finished	0.2	6.23	7.79	<RL	6.37	<RL	2.04	<RL	<RL	<RL	<RL	<RL	3.16	6.69	<RL	3.4	5.29	<RL	<RL	<RL	<RL	<RL	<RL	<RL	<RL	<RL
Harford	MD1120017	Harford Christian School	Well 3, High School	6/25/2024	Finished	0.6	1.48	6.78	<RL	4.45	<RL	5.98	<RL	<RL	<RL	<RL	<RL	3.92	7.38	<RL	3.95	7.44	2.35	<RL	<RL	<RL	<RL	<RL	<RL	<RL	<RL
Harford	MD1120017	Harford Christian School	Well 2, Kinder,Elem,Church	6/25/2024	Finished	NA	<RL	<RL	<RL	4.79	<RL	<RL	<RL	<RL	<RL	<RL	<RL	2.15	9.52	<RL	6.35	9.64	<RL	<RL	<RL	<RL	<RL	<RL	<RL	<RL	<RL
Harford	MD1120018	Harford Community College - Main Campus	Observatory Well - Transient	6/25/2024	Finished	NA	1.44	9.6	<RL	<RL	<RL	2.8	<RL	<RL	<RL	<RL	<RL	3.5	17.8	<RL	4.42	19.3	<RL	<RL	<RL	<RL	<RL	<RL	<RL	<RL	<RL
Harford	MD1120018	Harford Community College - Main Campus	Wtp 2 - Joppa Hall Wells	6/25/2024	Finished	0.2	3.61	4.99	<RL	2.93	<RL	2.37	<RL	<RL	<RL	<RL	<RL	3.71	11	<RL	5.64	12.6	<RL	<RL	<RL	<RL	<RL	<RL	<RL	<RL	<RL
Harford	MD1120018	Harford Community College - Main Campus	Wtp - Well 1 - Aberdeen Hall	6/25/2024	Finished	0.2	1.76	12	<RL	4.31	<RL	1.9	<RL	<RL	<RL	<RL	<RL	5.62	24.7	<RL	8.74	27.6	<RL	<RL	<RL	<RL	<RL	<RL	<RL	<RL	<RL
Harford	MD1120018	Harford Community College - Main Campus	Well 3 - Susquehanna Hall	6/25/2024	Finished	0.3	<RL	4.41	<RL	2	<RL	2.88	<RL	<RL	<RL	<RL	<RL	3.03	11.4	<RL	4.57	11.7	<RL	<RL	<RL	<RL	<RL	<RL	<RL	<RL	<RL
Harford	MD1120018	Harford Community College - Main Campus	Thomas Run Park - Transient	6/25/2024	Finished	0.6	3.36	7.04	<RL	1.83	<RL	6.38	<RL	<RL	<RL	<RL	<RL	3.22	15.9	<RL	5.06	19.2	<RL	<RL	<RL	<RL	<RL	<RL	<RL	<RL	<RL
Harford	MD1120022	Jacobs Well Assisted Living Home	Well 1, Kitchen Main Well	9/13/2023	Finished	0.2	<RL	3.37	<RL	8.45	<RL	2.02	<RL	<RL	<RL	<RL	<RL	4.03	6.34	<RL	2.81	7.04	<RL	<RL	<RL	<RL	<RL	<RL	<RL	<RL	<RL
Harford	MD1120023	Jarrettsville Elementary	Well 1 Ha880406	6/17/2024	Raw	0.3	<RL	2.35	<RL	2.33	<RL	2.93	<RL	<RL	<RL	<RL	<RL	1.26	2.82	<RL	1.63	2.45	<RL	<RL	<RL	<RL	<RL	<RL	<RL	<RL	<RL
Harford	MD1120023	Jarrettsville Elementary	Well 2 Ha941818	6/17/2024	Raw	0.4	1.74	4.48	<RL	2.45	<RL	3.85	<RL	<RL	<RL	<RL	<RL	2.25	5.78	<RL	2.73	5.3	<RL	<RL	<RL	<RL	<RL	<RL	<RL	<RL	<RL
Harford	MD1120024	Harford Academy	Well 1 Ha710167	6/17/2024	Raw	7.1	31.5	77.3	<RL	5.05	26	45	<RL	<RL	<RL	12.1	<RL	23.8	111	<RL	23.5	140	<RL	<RL	<RL	1.52	<RL	<RL	<RL	<RL	<RL
Harford	MD1120024	Harford Academy	Well 2 Ha813955	6/17/2024	Raw	3.5	17.2	33.8	<RL	2.89	9.46	25.6	<RL	<RL	<RL	5.31	<RL	12.4	50.2	<RL	13.3	63.6	<RL	<RL	<RL	<RL	<RL	<RL	<RL	<RL	<RL
Harford	MD1120026	Mountain Christian Church	Pumphouse 3	8/17/2023	Finished	NA	<RL	1.69	<RL	<RL	<RL	<RL	<RL	<RL	<RL	<RL	<RL	<RL	<RL	<RL	<RL	2	<RL	<RL	<RL	<RL	<RL	<RL	<RL	<RL	<RL

Phase 5 PFAS Sample Results

County	PWSID	System Name	Facility Source	Sample Collection Date	Sample Type	HI	PFOS	PFOA	HFPO-DA	PFBS	PFNA	PFHxS	11CI-PF3OUIS	ADONA	9CI-PF3ONS	PFDA	PFDOA	PFHpA	PFHxA	PFUnDA	PFBA	PFPeA	PFPeS	PFHpS	4-2 FTS	6-2 FTS	8-2 FTS	PFEESA	PFMPA	PFMBA	NFDHA
Harford	MD1120027	Norrisville Elementary School	Well 1 Nopermit Ha0027W1	6/13/2024	Raw	NA	<RL	1.34	<RL	<RL	<RL	<RL	<RL	<RL	<RL	<RL	<RL	<RL	1.29	<RL	1.45	1.13	<RL	<RL	<RL	<RL	<RL	<RL	<RL	<RL	<RL
Harford	MD1120027	Norrisville Elementary School	Well 2 Ha943349	6/13/2024	Raw	0.2	<RL	52.8	<RL	1.03	2.04	<RL	<RL	<RL	<RL	4.75	<RL	12.1	73.8	<RL	18.5	92.9	<RL	<RL	<RL	<RL	<RL	<RL	<RL	<RL	<RL
Harford	MD1120027	Norrisville Elementary	Well 1 Nopermit	8/6/2024	Finished	NA	<RL	<RL	<RL	<RL	<RL	<RL	<RL	<RL	<RL	<RL	<RL	<RL	<RL	<RL	<RL	<RL	<RL	<RL	<RL	<RL	<RL	<RL	<RL	<RL	<RL
Harford	MD1120027	Norrisville Elementary	Well 2 Ha943349	8/6/2024	Finished	NA	<RL	<RL	<RL	<RL	<RL	<RL	<RL	<RL	<RL	<RL	<RL	<RL	<RL	<RL	1.17	1.14	<RL	<RL	<RL	<RL	<RL	<RL	<RL	<RL	<RL
Harford	MD1120028	North Harford Elementary	Well 1 Ha736786	6/13/2024	Raw	NA	<RL	3.43	<RL	1.33	<RL	<RL	<RL	<RL	<RL	<RL	<RL	1.78	4.92	<RL	2.77	5.22	<RL	<RL	<RL	<RL	<RL	<RL	<RL	<RL	<RL
Harford	MD1120028	North Harford Elementary	Well 2 Ha4380A9	6/13/2024	Raw	NA	1.08	4.02	<RL	1.41	<RL	<RL	<RL	<RL	<RL	<RL	<RL	2.09	5.89	<RL	3.06	6.59	<RL	<RL	<RL	<RL	<RL	<RL	<RL	<RL	<RL
Harford	MD1120029	North Harford High School	Well 2 Nopermit Ha0029W2	6/13/2024	Raw	NA	<RL	1.54	<RL	<RL	<RL	<RL	<RL	<RL	<RL	<RL	<RL	1.03	2.56	<RL	1.69	2.79	<RL	<RL	<RL	<RL	<RL	<RL	<RL	<RL	<RL
Harford	MD1120029	North Harford High School	Well 3 Ha946010	6/13/2024	Raw	NA	<RL	<RL	<RL	<RL	<RL	<RL	<RL	<RL	<RL	<RL	<RL	1.78	<RL	1.56	1.65	<RL	<RL	<RL	<RL	<RL	<RL	<RL	<RL	<RL	<RL
Harford	MD1120030	North Harford Middle School	Well 5: Ha150265	6/13/2024	Raw	NA	<RL	<RL	<RL	<RL	<RL	<RL	<RL	<RL	<RL	<RL	<RL	<RL	<RL	<RL	<RL	<RL	<RL	<RL	<RL	<RL	<RL	<RL	<RL	<RL	<RL
Harford	MD1120030	North Harford Middle School	Well 6 - Ha160131	6/13/2024	Raw	NA	<RL	<RL	<RL	<RL	<RL	<RL	<RL	<RL	<RL	<RL	<RL	<RL	<RL	<RL	<RL	<RL	<RL	<RL	<RL	<RL	<RL	<RL	<RL	<RL	<RL
Harford	MD1120031	Highland Community Asc./Child. Cntr. N.	No. Harford Childrens Ctr Well	6/25/2024	Finished	NA	1.34	1.38	<RL	<RL	<RL	<RL	<RL	<RL	<RL	<RL	<RL	1.24	<RL	1.3	1.97	<RL	<RL	<RL	<RL	<RL	<RL	<RL	<RL	<RL	<RL
Harford	MD1120032	Prospect Mill Elementary	Well 1 Ha720910	6/17/2024	Raw	0.4	7.19	12.3	<RL	17.3	<RL	3.9	<RL	<RL	<RL	<RL	<RL	5.45	15.3	<RL	5.62	14.5	<RL	<RL	<RL	<RL	<RL	<RL	<RL	<RL	<RL
Harford	MD1120032	Prospect Mill Elementary	New Well Ha952376	6/17/2024	Raw	1.4	7.93	36.9	<RL	2.47	2.35	11.4	<RL	<RL	<RL	1.51	<RL	12	66	<RL	14.9	67.3	<RL	<RL	<RL	<RL	<RL	<RL	<RL	<RL	<RL
Harford	MD1120034	Stonewall Day Care Center #2	Well 3 Ha220007	7/22/2024	Raw	NA	4.08	5.15	<RL	5.84	<RL	<RL	<RL	<RL	<RL	<RL	<RL	2.79	4.76	<RL	2.63	3.7	<RL	<RL	<RL	<RL	<RL	<RL	<RL	<RL	<RL
Harford	MD1120034	Stonewall Day Care Center #2	Stonewall Wp Wells 1 & 2	7/22/2024	Finished	NA	3.97	5.78	<RL	6.62	<RL	<RL	<RL	<RL	<RL	<RL	<RL	3.41	5.86	<RL	3.22	4.13	<RL	<RL	<RL	<RL	<RL	<RL	<RL	<RL	<RL
Harford	MD1120035	Harford Technical High	Well 1 Ha733345	6/17/2024	Raw	0.6	3.94	19.9	<RL	2.84	2.89	2.93	<RL	<RL	<RL	<RL	<RL	8.26	42.9	<RL	13.3	57.3	<RL	<RL	<RL	<RL	<RL	<RL	<RL	<RL	<RL
Harford	MD1120035	Harford Technical High	Well 2 Ha733344	6/17/2024	Raw	0.8	5.51	26.7	<RL	3.3	3.75	3.77	<RL	<RL	<RL	<RL	<RL	10.6	48.8	<RL	14.9	62.8	<RL	<RL	<RL	<RL	<RL	<RL	<RL	<RL	<RL
Harford	MD1120037	Youths Benefit Elementary School	Youths Benefit Primary School	6/17/2024	Finished	0.2	<RL	2.56	<RL	1.46	<RL	1.56	<RL	<RL	<RL	<RL	<RL	4.29	11.4	<RL	4.52	11.6	<RL	<RL	<RL	<RL	<RL	<RL	<RL	<RL	<RL
Harford	MD1120039	Martin Marietta - Churchville Quarry	Well 1	9/13/2023	Finished	NA	<RL	1.96	<RL	3.44	<RL	<RL	<RL	<RL	<RL	<RL	<RL	<RL	<RL	<RL	1.76	<RL	<RL	<RL	<RL	<RL	<RL	<RL	<RL	<RL	<RL
Harford	MD1120047	Sod Run Wastewater Treatment Plant	Wtp 1 - Wells 1 & 2	9/13/2023	Finished	NA	<RL	<RL	<RL	<RL	<RL	<RL	<RL	<RL	<RL	<RL	<RL	<RL	<RL	<RL	<RL	<RL	<RL	<RL	<RL	<RL	<RL	<RL	<RL	<RL	<RL
Harford	MD1120048	North Bend Elementary School	Well 1 Ha880894	6/13/2024	Raw	NA	<RL	2.81	<RL	2.17	<RL	<RL	<RL	<RL	<RL	<RL	<RL	2.4	4.68	<RL	2.24	3.81	<RL	<RL	<RL	<RL	<RL	<RL	<RL	<RL	<RL
Harford	MD1120048	North Bend Elementary School	Well 2 Ha881033	6/13/2024	Raw	NA	<RL	2.37	<RL	<RL	<RL	<RL	<RL	<RL	<RL	<RL	<RL	<RL	1.5	<RL	1.03	1.18	<RL	<RL	<RL	<RL	<RL	<RL	<RL	<RL	<RL
Harford	MD1120048	North Bend Elementary School	Well 3 Ha881034	6/13/2024	Raw	NA	1.03	2.18	<RL	<RL	<RL	<RL	<RL	<RL	<RL	<RL	<RL	<RL	<RL	<RL	<RL	<RL	<RL	<RL	<RL	<RL	<RL	<RL	<RL	<RL	<RL
Harford	MD1120051	Fallston Middle School	Well 1 Ha862176	6/17/2024	Raw	NA	1.54	6.27	<RL	1.26	<RL	<RL	<RL	<RL	<RL	<RL	<RL	3.21	5.72	<RL	2.13	4.51	<RL	<RL	<RL	<RL	<RL	<RL	<RL	<RL	<RL
Harford	MD1120051	Fallston Middle School	Well 2 Ha862175	6/17/2024	Raw	NA	<RL	1.2	<RL	<RL	<RL	<RL	<RL	<RL	<RL	<RL	<RL	<RL	<RL	<RL	<RL	<RL	<RL	<RL	<RL	<RL	<RL	<RL	<RL	<RL	<RL
Harford	MD1120054	Forest Hill Nature Preschool & Childcare	Well 1 Ha940695	7/22/2024	Raw	NA	7.01	2.92	<RL	3.16	<RL	<RL	<RL	<RL	<RL	<RL	<RL	1.35	4	<RL	1.79	4.43	<RL	<RL	<RL	<RL	<RL	<RL	<RL	<RL	<RL
Harford	MD1120054	Forest Hill Nature Preschool & Childcare	Well 3 Ha944831	7/22/2024	Raw	0.3	3.84	7.93	<RL	3.71	<RL	3.01	<RL	<RL	<RL	<RL	<RL	2.92	10.1	<RL	3.45	9.61	<RL	<RL	<RL	<RL	<RL	<RL	<RL	<RL	<RL
Harford	MD1120055	Bethel Day Care And School	Bethel Day Care Well	7/22/2024	Finished	NA	4.32	1.78	<RL	1.3	<RL	<RL	<RL	<RL	<RL	<RL	<RL	<RL	1.84	<RL	1.23	2.39	<RL	<RL	<RL	<RL	<RL	<RL	<RL	<RL	<RL
Harford	MD1120059	Childtime Of Churchville	Staff Break Room	11/14/2024	Finished	0.208665	2.44	5.12	<RL	1.33	<RL	2.08	<RL	<RL	<RL	<RL	<RL	2.31	3.99	<RL	2.52	4.06	<RL	<RL	<RL	<RL	<RL	<RL	<RL	<RL	<RL
Harford	MD1120059	Childtime	Wtp Well	11/20/2024	Finished	0.227895	2.52	5.47	<RL	1.79	<RL	2.27	<RL	<RL	<RL	<RL	<RL	2.19	4.01	<RL	2.78	3.91	<RL	<RL	<RL	<RL	<RL	<RL	<RL	<RL	<RL
Harford	MD1120061	Havre De Grace Quarry	Well 3 Office/Employee Bldg.	8/30/2023	Finished	NA	<RL	<RL	<RL	<RL	<RL	<RL	<RL	<RL	<RL	<RL	<RL	<RL	<RL	<RL	<RL	<RL	<RL	<RL	<RL	<RL	<RL	<RL	<RL	<RL	<RL
Harford	MD1120062	The Highlands School	Wtp 1 - Well 1	7/22/2024	Finished	NA	<RL	1.26	<RL	<RL	<RL	<RL	<RL	<RL	<RL	<RL	<RL	<RL	1.64	<RL	1.63	2.19	<RL	<RL	<RL	<RL	<RL	<RL	<RL	<RL	<RL
Harford	MD1120064	Harford Community College	Well 1 - Towson	6/25/2024	Finished	NA	<RL	<RL	<RL	<RL	<RL	<RL	<RL	<RL	<RL	<RL	<RL	<RL	<RL	<RL	<RL	<RL	<RL	<RL	<RL	<RL	<RL	<RL	<RL	<RL	<RL
Harford	MD1120066	Harford County Airport	Common Header Ha180082 Building 4	8/30/2023	Finished	NA	<RL	<RL	<RL	8.85	<RL	<RL	<RL	<RL	<RL	<RL	<RL	<RL	<RL	<RL	<RL	<RL	<RL	<RL	<RL	<RL	<RL	<RL	<RL	<RL	<RL
Harford	MD1120066	Harford County Airport	Common Header Well Building 1 Ha180083	8/30/2023	Finished	NA	<RL	<RL	<RL	1.82	<RL	<RL	<RL	<RL	<RL	<RL	<RL	<RL	<RL	<RL	<RL	<RL	<RL	<RL	<RL	<RL	<RL	<RL	<RL	<RL	<RL
Harford	MD1120067	Jarrettsville Veterinary Center	Pit And Outside Well Wtp	9/13/2023	Finished	NA	<RL	<RL	<RL	<RL	<RL	<RL	<RL	<RL	<RL	<RL	<RL	<RL	<RL	<RL	<RL	<RL	<RL	<RL	<RL	<RL	<RL	<RL	<RL	<RL	<RL
Harford	MD1121046	Saubels Market	Wellhead	9/13/2023	Finished	NA	6.79	5.9	<RL	1.83	<RL	<RL	<RL	<RL	<RL	<RL	<RL	<RL	2.78	<RL	1.74	2.89	<RL	<RL	<RL	<RL	<RL	<RL	<RL	<RL	<RL
Harford	MD1121053	Royal Farms #88	Wtp 1 - Well 1	8/17/2023	Finished	NA	<RL	<RL	<RL	<RL	<RL	<RL	<RL	<RL	<RL	<RL	<RL	<RL	<RL	<RL	<RL	<RL	<RL	<RL	<RL	<RL	<RL	<RL	<RL	<RL	<RL
Harford	MD1121092	Kleins Shoprite (Cardiff) #555	Wtp 1 Well 1	9/13/2023	Finished	NA	<RL	<RL	<RL	<RL	<RL	<RL	<RL	<RL	<RL	<RL	<RL	<RL	<RL	<RL	<RL	<RL	<RL	<RL	<RL	<RL	<RL	<RL	<RL	<RL	<RL
Harford	MD1121126	Crossroads Station	Wtp 1	8/17/2023	Finished	NA	<RL	1.69	<RL	13.7	<RL	<RL	<RL	<RL	<RL	<RL	<RL	<RL	<RL	<RL	<RL	<RL	<RL	<RL	<RL	<RL	<RL	<RL	<RL	<RL	<RL

Phase 5 PFAS Sample Results

County	PWSID	System Name	Facility Source	Sample Collection Date	Sample Type	HI	PFOS	PFOA	HFPO-DA	PFBS	PFNA	PFHxS	11CI-PF3OUds	ADONA	9CI-PF3ONS	PFDA	PFDOA	PFHpA	PFHxA	PFUnDA	PFBA	PFPeA	PFPeS	PFHpS	4-2 FTS	6-2 FTS	8-2 FTS	PFEESA	PFMPA	PFMBA	NFDHA
Harford	MD1121240	Bridges Montessori School	Wellhead	6/25/2024	Finished	NA	1.31	1.45	<RL	1.19	<RL	<RL	<RL	<RL	<RL	<RL	<RL	<RL	6.15	<RL	2.02	6.51	<RL	<RL	<RL	<RL	<RL	<RL	<RL	<RL	<RL
Harford	MD1121244	Mountain Branch Golf Course Clubhouse <small>Recreatory Units</small>	Wtp 1 - Wells 1 & 3	8/17/2023	Finished	NA	<RL	<RL	<RL	<RL	<RL	<RL	<RL	<RL	<RL	<RL	<RL	<RL	<RL	<RL	<RL	<RL	<RL	<RL	<RL	<RL	<RL	<RL	<RL	<RL	<RL
Harford	MD1121254	Development, Nazarene Church <small>Church</small>	Well 1	6/25/2024	Finished	NA	5.63	4.07	<RL	5.83	<RL	<RL	<RL	<RL	<RL	<RL	<RL	1.31	1.54	<RL	1.21	1.48	<RL	<RL	<RL	<RL	<RL	<RL	<RL	<RL	<RL
Howard	MD1130001	Bushy Park Es/Glenwood Ms Complex	New Bushy Park Elementary	6/13/2024	Finished	NA	5.49	2.12	<RL	<RL	<RL	<RL	<RL	<RL	<RL	<RL	<RL	1.4	3.01	<RL	1.76	4.4	<RL	<RL	<RL	<RL	<RL	<RL	<RL	<RL	<RL
Howard	MD1130003	Glenelg Country School	Bottle Fill Station	8/25/2023	Finished	NA	<RL	<RL	<RL	<RL	<RL	<RL	<RL	<RL	<RL	<RL	<RL	<RL	<RL	<RL	<RL	<RL	<RL	<RL	<RL	<RL	<RL	<RL	<RL	<RL	<RL
Howard	MD1130003	Glenelg Country School	Middle School Building	8/16/2023	Raw	NA	<RL	<RL	<RL	<RL	<RL	<RL	<RL	<RL	<RL	<RL	<RL	<RL	<RL	<RL	<RL	<RL	<RL	<RL	<RL	<RL	<RL	<RL	<RL	<RL	<RL
Howard	MD1130003	Glenelg Country School	Primary And Lower School	8/16/2023	Raw	0.4	<RL	6.71	<RL	3.26	3.7	<RL	<RL	<RL	<RL	<RL	<RL	2.48	8.31	<RL	3.5	10.5	<RL	<RL	<RL	<RL	<RL	<RL	<RL	<RL	<RL
Howard	MD1130003	Glenelg Country School	Water Cooler 1	8/25/2023	Finished	NA	<RL	<RL	<RL	<RL	<RL	<RL	<RL	<RL	<RL	<RL	<RL	<RL	<RL	<RL	4.25	<RL	<RL	<RL	<RL	<RL	<RL	<RL	<RL	<RL	<RL
Howard	MD1130003	Glenelg Country School	Water Cooler 2	8/25/2023	Finished	NA	<RL	<RL	<RL	<RL	<RL	<RL	<RL	<RL	<RL	<RL	<RL	<RL	<RL	<RL	5.2	13.1	<RL	<RL	<RL	<RL	<RL	<RL	<RL	<RL	<RL
Howard	MD1130003	Glenelg Country School	Water Cooler 3	8/25/2023	Finished	NA	<RL	<RL	<RL	<RL	<RL	<RL	<RL	<RL	<RL	<RL	<RL	<RL	<RL	<RL	4.03	13.3	<RL	<RL	<RL	<RL	<RL	<RL	<RL	<RL	<RL
Howard	MD1130003	Glenelg Country School	Wtp Well 1, Gym	8/16/2023	Raw	NA	<RL	2.13	<RL	6.39	<RL	<RL	<RL	<RL	<RL	<RL	<RL	1.73	8.58	<RL	5.92	15.3	<RL	<RL	<RL	<RL	<RL	<RL	<RL	<RL	<RL
Howard	MD1130003	Glenelg Country School	Wtp Well 2, High School	8/16/2023	Raw	NA	<RL	1.67	<RL	<RL	<RL	<RL	<RL	<RL	<RL	<RL	<RL	<RL	<RL	<RL	2.91	2.35	<RL	<RL	<RL	<RL	<RL	<RL	<RL	<RL	<RL
Howard	MD1130004	Glenelg High School	Glenelg High New Well	6/25/2024	Finished	NA	2	2.97	<RL	<RL	<RL	<RL	<RL	<RL	<RL	<RL	<RL	1.4	4.54	<RL	1.85	6.69	<RL	<RL	<RL	<RL	<RL	<RL	<RL	<RL	<RL
Howard	MD1130006	Lisbon Elementary School	Lisbon Elem School	6/25/2024	Finished	0.3	16.4	8.9	<RL	2.38	<RL	3.04	<RL	<RL	<RL	<RL	<RL	2.87	5.6	<RL	4.04	6.37	<RL	<RL	<RL	<RL	<RL	<RL	<RL	<RL	<RL
Howard	MD1130008	West Friendship Elementary School	W. Friendship Elementary	5/30/2024	Finished	NA	<RL	1.85	<RL	1.26	<RL	<RL	<RL	<RL	<RL	<RL	<RL	1.61	3.4	<RL	1.75	3.02	<RL	<RL	<RL	<RL	<RL	<RL	<RL	<RL	<RL
Howard	MD1130011	Glenwood Office Park	Wtp 1 Trusted System Info Well	8/10/2023	Finished	NA	<RL	5.28	<RL	2.12	<RL	<RL	<RL	<RL	<RL	<RL	<RL	<RL	5.27	<RL	1.58	4.95	<RL	<RL	<RL	<RL	<RL	<RL	<RL	<RL	<RL
Howard	MD1130013	Lisbon Shopping Center/Harvest Fair	Wtp 1 (Harvest Fair, High'S)	9/5/2023	Finished	NA	<RL	2.19	<RL	1.5	<RL	<RL	<RL	<RL	<RL	<RL	<RL	1.53	7.34	<RL	3.24	5.29	<RL	<RL	<RL	<RL	<RL	<RL	<RL	<RL	<RL
Howard	MD1130013	Lisbon Shopping Center/Harvest Fair	Wtp 2 (Food Lion, Subway...)	9/5/2023	Finished	NA	<RL	1.56	<RL	1.24	<RL	<RL	<RL	<RL	<RL	<RL	<RL	<RL	2.55	<RL	1.81	2.36	<RL	<RL	<RL	<RL	<RL	<RL	<RL	<RL	<RL
Howard	MD1130015	West Friendship Shopping Center	Wtp - Well 1	9/6/2023	Finished	NA	<RL	5.06	<RL	1.28	<RL	<RL	<RL	<RL	<RL	<RL	<RL	2.15	8.22	<RL	3.03	7.51	<RL	<RL	<RL	<RL	<RL	<RL	<RL	<RL	<RL
Howard	MD1130017	Williams Gas Pipeline Station #190	Pumphouse Wells 1 2 & 3	9/6/2023	Finished	NA	4.87	2.46	<RL	<RL	<RL	<RL	<RL	<RL	<RL	<RL	<RL	<RL	<RL	<RL	2.73	<RL	<RL	<RL	<RL	<RL	<RL	<RL	<RL	<RL	<RL
Howard	MD1130022	Bon Secour Spiritual Center	Wtp - Wells 1, 2, 3, 4	9/20/2023	Finished	NA	<RL	<RL	<RL	1.23	<RL	<RL	<RL	<RL	<RL	<RL	<RL	<RL	<RL	<RL	<RL	<RL	<RL	<RL	<RL	<RL	<RL	<RL	<RL	<RL	<RL
Howard	MD1130024	U.M. Central Md Research & Education Ctr	Univ. Of Maryland Farm Well 1	9/20/2023	Finished	NA	<RL	<RL	<RL	<RL	<RL	<RL	<RL	<RL	<RL	<RL	<RL	<RL	<RL	<RL	<RL	<RL	<RL	<RL	<RL	<RL	<RL	<RL	<RL	<RL	<RL
Howard	MD1130025	Mount Airy Christian Academy	Lbc Well	7/23/2024	Raw	0.1	1.17	2.12	<RL	2.65	1.46	<RL	<RL	<RL	<RL	<RL	<RL	1.32	3.01	<RL	2.85	3.23	<RL	<RL	<RL	<RL	<RL	<RL	<RL	<RL	<RL
Howard	MD1130027	Triadelphia Ridge Elementary	Wtp 3 Wells	6/11/2024	Finished	NA	<RL	<RL	<RL	<RL	<RL	<RL	<RL	<RL	<RL	<RL	<RL	<RL	1.66	<RL	<RL	1.73	<RL	<RL	<RL	<RL	<RL	<RL	<RL	<RL	<RL
Howard	MD1130028	Folly Quarter Middle School	Well 1 & 2	6/25/2024	Finished	NA	1.12	3.54	<RL	<RL	<RL	<RL	<RL	<RL	<RL	<RL	<RL	1.02	2.62	<RL	1.66	3.35	<RL	<RL	<RL	<RL	<RL	<RL	<RL	<RL	<RL
Howard	MD1130031	Ten Oaks Plaza	Ten Oaks Plaza Wtp Well 1	8/1/2023	Finished	NA	<RL	2.34	<RL	<RL	<RL	<RL	<RL	<RL	<RL	<RL	<RL	<RL	<RL	<RL	1.51	2.19	<RL	<RL	<RL	<RL	<RL	<RL	<RL	<RL	<RL
Howard	MD1130032	Inwood Village Center	Wtp Inwood Village Ctr Well	8/1/2023	Finished	NA	<RL	7.41	<RL	<RL	<RL	<RL	<RL	<RL	<RL	<RL	<RL	1.7	3.42	<RL	3.43	2.91	<RL	<RL	<RL	<RL	<RL	<RL	<RL	<RL	<RL
Howard	MD1130041	Dayton Oaks Elementary School	Dayton Oaks Wtp - Wells 1 & 3	6/11/2024	Finished	NA	<RL	1.55	<RL	<RL	<RL	<RL	<RL	<RL	<RL	<RL	<RL	<RL	2.06	<RL	1.27	1.89	<RL	<RL	<RL	<RL	<RL	<RL	<RL	<RL	<RL
Howard	MD1130043	Glenwood Country Day School	Wtp 1	6/5/2024	Finished	NA	2.59	4.74	<RL	4.56	<RL	<RL	<RL	<RL	<RL	<RL	<RL	2.02	4.29	<RL	2.59	3.99	<RL	<RL	<RL	<RL	<RL	<RL	<RL	<RL	<RL
Howard	MD1130044	Highland Crossing Shopping Center	Wtp 1	9/13/2023	Finished	NA	<RL	5.04	<RL	7.5	<RL	<RL	<RL	<RL	<RL	<RL	<RL	3.12	7.98	<RL	3.73	7.98	<RL	<RL	<RL	<RL	<RL	<RL	<RL	<RL	<RL
Howard	MD1131013	Glenelg Um Church And Nursery School	Wtp 1 - Well 1	7/18/2024	Finished	NA	<RL	<RL	<RL	<RL	<RL	<RL	<RL	<RL	<RL	<RL	<RL	<RL	<RL	<RL	<RL	<RL	<RL	<RL	<RL	<RL	<RL	<RL	<RL	<RL	<RL
Howard	MD1131108	Mt. Zion Um Church And Preschool	Well 2	7/23/2024	Raw	NA	<RL	1.66	<RL	1.22	<RL	<RL	<RL	<RL	<RL	<RL	<RL	1.47	3.68	<RL	2.51	4.8	<RL	<RL	<RL	<RL	<RL	<RL	<RL	<RL	<RL
Howard	MD1131318	Glenwood Community Center	Wtp 1	8/1/2023	Finished	NA	<RL	2.62	<RL	4.11	<RL	<RL	<RL	<RL	<RL	<RL	<RL	5.36	12.9	<RL	5.94	18.1	<RL	<RL	<RL	<RL	<RL	<RL	<RL	<RL	<RL
Kent	MD1140009	Eastman Specialties Corporation	Wtp 1 - Wells 4 & 6	9/24/2024	Finished	NA	<RL	<RL	<RL	<RL	<RL	<RL	<RL	<RL	<RL	<RL	<RL	<RL	<RL	<RL	<RL	<RL	<RL	<RL	<RL	<RL	<RL	<RL	<RL	<RL	<RL
Kent	MD1140011	Marymed Llc	Sample Tap	12/5/2024	Finished	NA	0.586	1.23	<RL	1.09	<RL	<RL	<RL	<RL	<RL	<RL	<RL	0.547	0.895	<RL	<RL	0.683	<RL	<RL	<RL	<RL	<RL	<RL	<RL	<RL	<RL
Kent	MD1141020	Georgetown Yacht Haven	Wtp 1 - Well 1	9/24/2024	Finished	NA	<RL	<RL	<RL	<RL	<RL	<RL	<RL	<RL	<RL	<RL	<RL	<RL	<RL	<RL	<RL	<RL	<RL	<RL	<RL	<RL	<RL	<RL	<RL	<RL	<RL
Montgomery	MD1150003	Bretton Woods Recreation Center	Wtp - Wells 1, 2 & 3	8/3/2023	Finished	NA	<RL	<RL	<RL	<RL	<RL	<RL	<RL	<RL	<RL	<RL	<RL														

Phase 5 PFAS Sample Results

County	PWSID	System Name	Facility Source	Sample Collection Date	Sample Type	HI	PFOS	PFOA	HFPO-DA	PFBS	PFNA	PFHxS	11CI-PF3OUIS	ADONA	9CI-PF3ONS	PFDA	PFDOA	PFHpA	PFHxA	PFUnDA	PFBA	PFPeA	PFPeS	PFHpS	4-2 FTS	6-2 FTS	8-2 FTS	PFEESA	PFMPA	PFMBA	NFDHA
Montgomery	MD1150018	Monocacy Elementary School	Wtp - New Well	6/28/2024	Finished	1.1	25	45.9	<RL	2.7	8.66	1.88	<RL	<RL	<RL	11.1	<RL	22.5	45.6	1.4	20.9	54.9	<RL	<RL	<RL	<RL	<RL	<RL	<RL	<RL	<RL
Montgomery	MD1150038	Butler School	Park House	11/13/2024	Finished	0.240765	0.61	6.52	<RL	5.53	<RL	2.38	<RL	<RL	<RL	<RL	<RL	4.45	12.8	<RL	6.74	15.4	1.24	<RL	<RL	<RL	<RL	<RL	<RL	<RL	<RL
Montgomery	MD1150038	Butler School	Main Bldg Wtp Wells 2 3 Barn	12/3/2024	Finished	0.07496	0.659	2.54	<RL	1.52	<RL	0.742	<RL	<RL	<RL	<RL	<RL	1.17	5.16	<RL	3.26	7.29	<RL	<RL	<RL	<RL	<RL	<RL	<RL	<RL	<RL
Montgomery	MD1150038	Butler School	Main Bldg Wtp Wells 2 3 Barn	1/15/2025	Finished	0.078655	<RL	2.58	<RL	1.51	<RL	0.779	<RL	<RL	<RL	<RL	<RL	1.25	5.56	<RL	3.28	7.85	<RL	<RL	<RL	<RL	<RL	<RL	<RL	<RL	<RL
Montgomery	MD1150040	N.I.H. Animal Center	Wtp - Wells 2, 3, & 5	9/19/2023	Finished	NA	<RL	<RL	<RL	<RL	<RL	<RL	<RL	<RL	<RL	<RL	<RL	<RL	<RL	<RL	<RL	<RL	<RL	<RL	<RL	<RL	<RL	<RL	<RL	<RL	<RL
Montgomery	MD1150044	Neutron Products, Inc.	Wtp West Ph - Well 1	9/12/2023	Finished	NA	<RL	1.93	<RL	<RL	<RL	<RL	<RL	<RL	<RL	<RL	<RL	<RL	<RL	<RL	<RL	<RL	<RL	<RL	<RL	<RL	<RL	<RL	<RL	<RL	<RL
Montgomery	MD1150046	Montgomery Co Resource Recovery Facility	Wtp - Well 1	9/12/2023	Finished	NA	5.22	3.37	<RL	1.08	<RL	<RL	<RL	<RL	<RL	<RL	<RL	<RL	<RL	<RL	2.32	<RL	<RL	<RL	<RL	<RL	<RL	<RL	<RL	<RL	<RL
Montgomery	MD1150049	C.S.A.A.C. - Brookeville School Campus	Wtp/Well #1	6/28/2024	Finished	NA	1.21	1.77	<RL	2.81	<RL	<RL	<RL	<RL	<RL	<RL	<RL	1.64	4.12	<RL	4.11	5.08	<RL	<RL	<RL	<RL	<RL	<RL	<RL	<RL	<RL
Montgomery	MD1150050	Ruppert Landscape	Wtp 1 Ruppert Nursery Well	9/18/2023	Finished	NA	<RL	<RL	<RL	<RL	<RL	<RL	<RL	<RL	<RL	<RL	<RL	<RL	<RL	<RL	<RL	<RL	<RL	<RL	<RL	<RL	<RL	<RL	<RL	<RL	<RL
Montgomery	MD1150051	Glenstone Foundation	Glenstone Shop Building Wtp	9/19/2023	Finished	NA	<RL	<RL	<RL	2.69	<RL	<RL	<RL	<RL	<RL	<RL	<RL	<RL	3.62	<RL	3.63	3.07	<RL	<RL	<RL	<RL	<RL	<RL	<RL	<RL	<RL
Montgomery	MD1151075	^{new hope} Presbyterian/Cic Preschool	Well 1	1/27/2025	Finished	0.12294	4.78	4.96	<RL	3.88	<RL	1.21	<RL	<RL	<RL	<RL	<RL	1.94	3.33	<RL	2.3	3.48	<RL	<RL	<RL	<RL	<RL	<RL	<RL	<RL	<RL
Prince Georges	MD0160001	U.S.D.A. Agricultural Research Center	Wtp Agriculture Research Ctr	11/6/2024	Finished	NA	2.81	3.2	<RL	<RL	<RL	2.12	<RL	<RL	<RL	<RL	<RL	1.02	1.63	<RL	<RL	1.28	<RL	<RL	<RL	<RL	<RL	<RL	<RL	<RL	<RL
Prince Georges	MD0160018	Federal Law Enforcement Training Center	Well House Tap	8/31/2023	Raw	NA	<RL	<RL	<RL	<RL	<RL	<RL	<RL	<RL	<RL	<RL	<RL	<RL	<RL	<RL	<RL	<RL	<RL	<RL	<RL	<RL	<RL	<RL	<RL	<RL	<RL
Prince Georges	MD0160018	Federal Law Enforcement Training Center	Well House Tap	8/31/2023	Raw	NA	<RL	<RL	<RL	<RL	<RL	<RL	<RL	<RL	<RL	<RL	<RL	<RL	<RL	<RL	<RL	<RL	<RL	<RL	<RL	<RL	<RL	<RL	<RL	<RL	<RL
Prince Georges	MD0160018	Federal Law Enforcement Training Center	Fletc Well 108	6/11/2024	Finished	NA	<RL	<RL	<RL	<RL	<RL	<RL	<RL	<RL	<RL	<RL	<RL	<RL	<RL	<RL	<RL	<RL	<RL	<RL	<RL	<RL	<RL	<RL	<RL	<RL	<RL
Prince Georges	MD0160018	Federal Law Enforcement Training Center	Fletc Well 9R	6/11/2024	Finished	NA	<RL	<RL	<RL	<RL	<RL	<RL	<RL	<RL	<RL	<RL	<RL	<RL	<RL	<RL	<RL	<RL	<RL	<RL	<RL	<RL	<RL	<RL	<RL	<RL	<RL
Prince Georges	MD1160004	Baden Elementary	Wtp Baden Elementary School	5/16/2024	Finished	NA	<RL	<RL	<RL	<RL	<RL	<RL	<RL	<RL	<RL	<RL	<RL	<RL	<RL	<RL	<RL	<RL	<RL	<RL	<RL	<RL	<RL	<RL	<RL	<RL	<RL
Prince Georges	MD1160035	Wssc-Western Branch	Wtp Wssc Western Branch Well	11/6/2024	Finished	NA	<RL	<RL	<RL	<RL	<RL	<RL	<RL	<RL	<RL	<RL	<RL	<RL	<RL	<RL	<RL	<RL	<RL	<RL	<RL	<RL	<RL	<RL	<RL	<RL	<RL
Prince Georges	MD1160043	Fairhaven School	Wtp School Well	1/30/2025	Finished	NA	<RL	<RL	<RL	<RL	<RL	<RL	<RL	<RL	<RL	<RL	<RL	<RL	<RL	<RL	<RL	<RL	<RL	<RL	<RL	<RL	<RL	<RL	<RL	<RL	<RL
Queen Annes	MD1170002	Church Hill Elementary School	Wtp- Church Hill Elem Well 2	1/28/2025	Finished	NA	<RL	<RL	<RL	<RL	<RL	<RL	<RL	<RL	<RL	<RL	<RL	<RL	<RL	<RL	<RL	<RL	<RL	<RL	<RL	<RL	<RL	<RL	<RL	<RL	<RL
Queen Annes	MD1170005	Reeb Millwork Of Maryland	Delmarva Sash & Door New Well	9/25/2024	Finished	NA	<RL	<RL	<RL	<RL	<RL	<RL	<RL	<RL	<RL	<RL	<RL	<RL	<RL	<RL	<RL	<RL	<RL	<RL	<RL	<RL	<RL	<RL	<RL	<RL	<RL
Queen Annes	MD1170014	Queen Anne'S County Dpw Office	Wtp - Q. A. County Dpw Well 2	9/19/2024	Finished	NA	<RL	<RL	<RL	<RL	<RL	<RL	<RL	<RL	<RL	<RL	<RL	<RL	<RL	<RL	<RL	<RL	<RL	<RL	<RL	<RL	<RL	<RL	<RL	<RL	<RL
Queen Annes	MD1170016	Queen Anne'S County Parks And Recreation	Wtp - Rec & Parks Office Area	9/19/2024	Finished	NA	<RL	<RL	<RL	<RL	<RL	<RL	<RL	<RL	<RL	<RL	<RL	<RL	<RL	<RL	<RL	<RL	<RL	<RL	<RL	<RL	<RL	<RL	<RL	<RL	<RL
Queen Annes	MD1170022	Tidewater Direct Lic	Wtp- New Well	9/26/2024	Finished	NA	<RL	<RL	<RL	<RL	<RL	<RL	<RL	<RL	<RL	<RL	<RL	<RL	<RL	<RL	<RL	<RL	<RL	<RL	<RL	<RL	<RL	<RL	<RL	<RL	<RL
Queen Annes	MD1170025	Kent Island Shopping Center	Wtp - Kent I. Shop. Ctr Well	10/1/2024	Finished	NA	<RL	<RL	<RL	<RL	<RL	<RL	<RL	<RL	<RL	<RL	<RL	<RL	<RL	<RL	<RL	<RL	<RL	<RL	<RL	<RL	<RL	<RL	<RL	<RL	<RL
Queen Annes	MD1170030	Chesapeake College	Chesapeake College 1 Qa680054	8/1/2024	Raw	NA	<RL	<RL	<RL	<RL	<RL	<RL	<RL	<RL	<RL	<RL	<RL	<RL	<RL	<RL	<RL	<RL	<RL	<RL	<RL	<RL	<RL	<RL	<RL	<RL	<RL
Queen Annes	MD1170030	Chesapeake College	Chesapeake College 2 Qa680055	8/1/2024	Raw	NA	<RL	<RL	<RL	<RL	<RL	<RL	<RL	<RL	<RL	<RL	<RL	<RL	<RL	<RL	<RL	<RL	<RL	<RL	<RL	<RL	<RL	<RL	<RL	<RL	<RL
Queen Annes	MD1170033	Reeb Millwork (Delmarva Sash & Door) 1315	Wtp 1 - Well 1	9/25/2024	Finished	NA	<RL	<RL	<RL	<RL	<RL	<RL	<RL	<RL	<RL	<RL	<RL	<RL	<RL	<RL	<RL	<RL	<RL	<RL	<RL	<RL	<RL	<RL	<RL	<RL	<RL
Somerset	MD1190009	Eden Head Start	Wtp	1/31/2025	Finished	NA	<RL	<RL	<RL	<RL	<RL	<RL	<RL	<RL	<RL	<RL	<RL	<RL	<RL	<RL	<RL	<RL	<RL	<RL	<RL	<RL	<RL	<RL	<RL	<RL	<RL
Somerset	MD1190019	Somerset Community Services	Kitchen Sink	12/6/2024	Finished	NA	1.42	3.97	<RL	0.863	<RL	<RL	<RL	<RL	<RL	<RL	<RL	2.9	12.1	<RL	3.4	14.6	<RL	<RL	<RL	<RL	<RL	<RL	<RL	<RL	<RL
Somerset	MD1190022	Somerset Co Health Dept- Behavioral Hth	Wellhead Somerset Intermediate Well	7/26/2024	Raw	NA	<RL	<RL	<RL	<RL	<RL	<RL	<RL	<RL	<RL	<RL	<RL	<RL	<RL	<RL	<RL	<RL	<RL	<RL	<RL	<RL	<RL	<RL	<RL	<RL	<RL
Somerset	MD1190023	Holly Grove Christian School	Well 1 5o810098	7/26/2024	Raw	NA	<RL	<RL	<RL	<RL	<RL	<RL	<RL	<RL	<RL	<RL	<RL	<RL	<RL	<RL	<RL	<RL	<RL	<RL	<RL	<RL	<RL	<RL	<RL	<RL	<RL
Somerset	MD1190023	Holly Grove Christian School	Well 2 5o940381	7/26/2024	Raw	NA	<RL	<RL	<RL	<RL	<RL	<RL	<RL	<RL	<RL	<RL	<RL	<RL	<RL	<RL	<RL	<RL	<RL	<RL	<RL	<RL	<RL	<RL	<RL	<RL	<RL
Somerset	MD1190024	Sysco Eastern Md	Wtp	12/6/2024	Finished	NA	<RL	<RL	<RL	<RL	<RL	<RL	<RL	<RL	<RL	<RL	<RL	<RL	<RL	<RL	<RL	<RL	<RL	<RL	<RL	<RL	<RL	<RL	<RL	<RL	<RL
St Marys	MD1180001	Benjamin Banneker Elementary School	Banneker Elem Sch Well 2	6/4/2024	Finished	NA	<RL	<RL	<RL	<RL	<RL	<RL	<RL	<RL	<RL	<RL	<RL	<RL	<RL	<RL	<RL	<RL	<RL	<RL	<RL	<RL	<RL	<RL	<RL	<RL	<RL
St Marys	MD1180006	Chopticon High School	Chopticon High Well	6/10/2024	Finished	NA	<RL	<RL	<RL	<RL	<RL	<RL	<RL	<RL	<RL	<RL	<RL	<RL	<RL	<RL	<RL	<RL	<RL	<RL	<RL	<RL	<RL	<RL	<RL	<RL	<RL
St Marys	MD1180008	Creative Beginnings Pre-School & Daycare	Creative Beginnings Pre Sc	5/21/2024	Finished	NA	<RL	<RL	<RL	<RL	<RL	<RL	<RL	<RL	<RL	<RL	<RL	<RL	<RL	<RL	<RL	<RL	<RL	<RL	<RL	<RL	<RL	<RL	<RL	<RL	<RL
St Marys	MD1180008	Creative Beginnings Pre-School & Daycare	Creative Beginnings Annex	5/21/2024	Finished	NA	<RL	<RL	<RL	<RL	<RL	<RL	<RL	<RL	<RL	<RL	<RL	<RL	<RL	<RL	<RL	<RL	<RL	<RL	<RL	<RL	<RL	<RL	<RL	<RL	<RL
St Marys	MD1180010	Dynard Elementary School	Well 2	6/10/2024	Finished	NA	<RL	<RL	<RL	<RL	<RL	<RL	<RL	<RL	<RL	<RL	<RL	<RL	<RL	<RL	<RL	<RL	<RL	<RL	<RL	<RL	<RL	<RL	<RL	<RL	<RL
St Marys	MD1180019	Hollywood Elementary School	Well 2R	6/4/2024	Finished	NA	<RL	<RL	<RL	<RL	<RL	<RL	<RL	<RL	<RL	<RL	<RL	<RL	<RL	<RL	<RL	<RL	<RL	<RL	<RL	<RL	<RL	<RL	<RL	<RL	<RL

Phase 5 PFAS Sample Results

County	PWSID	System Name	Facility Source	Sample Collection Date	Sample Type	HI	PFOS	PFOA	HFPO-DA	PFBS	PFNA	PFHxS	11CI-PF3OUIS	ADONA	9CI-PF3ONS	PFDA	PFDOA	PFHpA	PFHxA	PFUnDA	PFBA	PFPeA	PFPeS	PFHpS	4-2 FTS	6-2 FTS	8-2 FTS	PFEESA	PFMPA	PFMBA	NFDHA
St Marys	MD1180024	Leonardtown High School	New Well	5/21/2024	Finished	NA	<RL	<RL	<RL	<RL	<RL	<RL	<RL	<RL	<RL	<RL	<RL	<RL	<RL	<RL	<RL	<RL	<RL	<RL	<RL	<RL	<RL	<RL	<RL	<RL	<RL
St Marys	MD1180026	Leonardtown Middle & Forrest Tech Center	Tech Ctr-Well 3	5/21/2024	Finished	NA	<RL	<RL	<RL	<RL	<RL	<RL	<RL	<RL	<RL	<RL	<RL	<RL	<RL	<RL	<RL	<RL	<RL	<RL	<RL	<RL	<RL	<RL	<RL	<RL	<RL
St Marys	MD1180027	Lettie Marshall Dent Elementary	Lettie Marshall Dent Wellhead	5/17/2024	Finished	NA	<RL	<RL	<RL	<RL	<RL	<RL	<RL	<RL	<RL	<RL	<RL	<RL	<RL	<RL	<RL	<RL	<RL	<RL	<RL	<RL	<RL	<RL	<RL	<RL	<RL
St Marys	MD1180028	Little Flower School	Poe @ Wtp Well 2 In Service	5/21/2024	Finished	NA	<RL	<RL	<RL	<RL	<RL	<RL	<RL	<RL	<RL	<RL	<RL	<RL	<RL	<RL	<RL	<RL	<RL	<RL	<RL	<RL	<RL	<RL	<RL	<RL	<RL
St Marys	MD1180028	Little Flower School	Little Flower 1 (Lower) Sm023113	5/21/2024	Raw	NA	<RL	<RL	<RL	<RL	<RL	<RL	<RL	<RL	<RL	<RL	<RL	<RL	<RL	<RL	<RL	<RL	<RL	<RL	<RL	<RL	<RL	<RL	<RL	<RL	<RL
St Marys	MD1180031	Benjamin Banneker Early Childhood Center	Loveville School Wellhead	6/4/2024	Finished	NA	<RL	<RL	<RL	<RL	<RL	<RL	<RL	<RL	<RL	<RL	<RL	<RL	<RL	<RL	<RL	<RL	<RL	<RL	<RL	<RL	<RL	<RL	<RL	<RL	<RL
St Marys	MD1180032	Margaret Brent Middle School	School Wellhead	6/10/2024	Finished	NA	<RL	<RL	<RL	<RL	<RL	<RL	<RL	<RL	<RL	<RL	<RL	<RL	<RL	<RL	<RL	<RL	<RL	<RL	<RL	<RL	<RL	<RL	<RL	<RL	<RL
St Marys	MD1180035	Mechanicsville Elementary	Mechanicsville Ele Well 2	5/17/2024	Finished	NA	<RL	<RL	<RL	<RL	<RL	<RL	<RL	<RL	<RL	<RL	<RL	<RL	<RL	<RL	<RL	<RL	<RL	<RL	<RL	<RL	<RL	<RL	<RL	<RL	<RL
St Marys	MD1180037	Oakville Elementary School	Wtp Oakville Elementary Well	6/10/2024	Finished	NA	<RL	<RL	<RL	<RL	<RL	<RL	<RL	<RL	<RL	<RL	<RL	<RL	<RL	<RL	<RL	<RL	<RL	<RL	<RL	<RL	<RL	<RL	<RL	<RL	<RL
St Marys	MD1180040	Piney Point Elementary School	Piney Point Elem Wellhead	5/21/2024	Finished	NA	<RL	<RL	<RL	<RL	<RL	<RL	<RL	<RL	<RL	<RL	<RL	<RL	<RL	<RL	<RL	<RL	<RL	<RL	<RL	<RL	<RL	<RL	<RL	<RL	<RL
St Marys	MD1180044	Ridge Elementary School	Ridge Elementary Wellhead	5/21/2024	Finished	NA	<RL	<RL	<RL	<RL	<RL	<RL	<RL	<RL	<RL	<RL	<RL	<RL	<RL	<RL	<RL	<RL	<RL	<RL	<RL	<RL	<RL	<RL	<RL	<RL	<RL
St Marys	MD1180049	Spring Ridge Middle School	Spring Ridge Middle Wellhead	5/21/2024	Finished	NA	<RL	<RL	<RL	<RL	<RL	<RL	<RL	<RL	<RL	<RL	<RL	<RL	<RL	<RL	<RL	<RL	<RL	<RL	<RL	<RL	<RL	<RL	<RL	<RL	<RL
St Marys	MD1180052	The Center For Life Enrichment	Wtp St. Mary's Co. Dev Ctr	12/10/2024	Finished	NA	<RL	<RL	<RL	<RL	<RL	<RL	<RL	<RL	<RL	<RL	<RL	<RL	<RL	<RL	<RL	<RL	<RL	<RL	<RL	<RL	<RL	<RL	<RL	<RL	<RL
St Marys	MD1180056	White Marsh Elementary School	White Marsh Elem Wellhead	5/17/2024	Finished	NA	<RL	<RL	<RL	<RL	<RL	<RL	<RL	<RL	<RL	<RL	<RL	<RL	<RL	<RL	<RL	<RL	<RL	<RL	<RL	<RL	<RL	<RL	<RL	<RL	<RL
St Marys	MD1180062	Take-It-Easy Campground Retreat	Wtp 1 Well 1	12/2/2024	Finished	NA	<RL	<RL	<RL	<RL	<RL	<RL	<RL	<RL	<RL	<RL	<RL	<RL	<RL	<RL	<RL	<RL	<RL	<RL	<RL	<RL	<RL	<RL	<RL	<RL	<RL
St Marys	MD1180070	Bay Montessori School	Bay Montessori Wellhead	11/25/2024	Finished	NA	<RL	<RL	<RL	<RL	<RL	<RL	<RL	<RL	<RL	<RL	<RL	<RL	<RL	<RL	<RL	<RL	<RL	<RL	<RL	<RL	<RL	<RL	<RL	<RL	<RL
St Marys	MD1180074	Redgate Properties, Llc	Wtp 01_Well 1	12/2/2024	Finished	NA	<RL	<RL	<RL	<RL	<RL	<RL	<RL	<RL	<RL	<RL	<RL	<RL	<RL	<RL	<RL	<RL	<RL	<RL	<RL	<RL	<RL	<RL	<RL	<RL	<RL
St Marys	MD1181326	Leonardtown S.H.A./ S.H.A. Maint.	Leonardtown S H A	11/25/2024	Finished	NA	<RL	<RL	<RL	<RL	<RL	<RL	<RL	<RL	<RL	<RL	<RL	<RL	<RL	<RL	<RL	<RL	<RL	<RL	<RL	<RL	<RL	<RL	<RL	<RL	<RL
Talbot	MD1200008	Tilghman Elementary School	Tilghman Elem Sch Wtp 1 Well 2	6/12/2024	Finished	NA	<RL	<RL	<RL	<RL	<RL	<RL	<RL	<RL	<RL	<RL	<RL	<RL	<RL	<RL	<RL	<RL	<RL	<RL	<RL	<RL	<RL	<RL	<RL	<RL	<RL
Talbot	MD1200009	Paris Foods	Paris Foods Wells 1 & 2	12/4/2024	Finished	NA	<RL	<RL	<RL	<RL	<RL	<RL	<RL	<RL	<RL	<RL	<RL	<RL	<RL	<RL	<RL	<RL	<RL	<RL	<RL	<RL	<RL	<RL	<RL	<RL	<RL
Talbot	MD1200010	Chapel District Elementary	Chapel District El Wtp 1 Well1	6/12/2024	Finished	NA	<RL	<RL	<RL	<RL	<RL	<RL	<RL	<RL	<RL	<RL	<RL	<RL	<RL	<RL	<RL	<RL	<RL	<RL	<RL	<RL	<RL	<RL	<RL	<RL	<RL
Talbot	MD1200015	Calhoun M.E.B.A. School	Wtp A/Diesel Lab	12/12/2024	Raw	NA	<RL	<RL	<RL	<RL	<RL	<RL	<RL	<RL	<RL	<RL	<RL	<RL	<RL	<RL	<RL	<RL	<RL	<RL	<RL	<RL	<RL	<RL	<RL	<RL	<RL
Talbot	MD1200015	Calhoun M.E.B.A. School	Wtp B/Guest House	12/12/2024	Finished	NA	<RL	<RL	<RL	<RL	<RL	<RL	<RL	<RL	<RL	<RL	<RL	<RL	<RL	<RL	<RL	<RL	<RL	<RL	<RL	<RL	<RL	<RL	<RL	<RL	<RL
Talbot	MD1200015	Calhoun M.E.B.A. School	Calhoun M.E.B.A. Well A1 Ta940568	12/12/2024	Raw	NA	<RL	<RL	<RL	<RL	<RL	<RL	<RL	<RL	<RL	<RL	<RL	<RL	<RL	<RL	<RL	<RL	<RL	<RL	<RL	<RL	<RL	<RL	<RL	<RL	<RL
Talbot	MD1201021	Wylder Hotel Tilghman Island	Wellhead -Wells 1+3	12/4/2024	Finished	NA	<RL	<RL	<RL	<RL	<RL	<RL	<RL	<RL	<RL	<RL	<RL	<RL	<RL	<RL	<RL	<RL	<RL	<RL	<RL	<RL	<RL	<RL	<RL	<RL	<RL
Talbot	MD1201046	Talbot Co. Country Club	Wellhead - Wells 1+2	12/4/2024	Finished	NA	<RL	<RL	<RL	<RL	<RL	<RL	<RL	<RL	<RL	<RL	<RL	<RL	<RL	<RL	<RL	<RL	<RL	<RL	<RL	<RL	<RL	<RL	<RL	<RL	<RL
Washington	MD0210214	San Mar	Wtp - Well 1	9/7/2023	Finished	NA	<RL	<RL	<RL	<RL	<RL	<RL	<RL	<RL	<RL	<RL	<RL	<RL	<RL	<RL	<RL	<RL	<RL	<RL	<RL	<RL	<RL	<RL	<RL	<RL	<RL
Washington	MD1210005	Fountain Rock Elementary	Fountain Rock El Wtp - Well	9/17/2024	Finished	NA	0.957	<RL	<RL	<RL	<RL	0.683	<RL	<RL	<RL	<RL	<RL	<RL	<RL	<RL	<RL	<RL	<RL	<RL	<RL	<RL	<RL	<RL	<RL	<RL	<RL
Washington	MD1210006	Greenbrier Elementary School	Wtp 1 - Greenbrier Es	9/17/2024	Finished	0.1	3	1.39	<RL	1.27	<RL	1.13	<RL	<RL	<RL	<RL	<RL	<RL	<RL	<RL	<RL	<RL	<RL	<RL	<RL	<RL	<RL	<RL	<RL	<RL	<RL
Washington	MD1210007	Heritage Academy	Wtp 1 - Heritage Academy	6/20/2024	Finished	NA	<RL	<RL	<RL	<RL	<RL	<RL	<RL	<RL	<RL	<RL	<RL	1.36	<RL	1.9	3.1	<RL	<RL	<RL	<RL	<RL	<RL	<RL	<RL	<RL	<RL
Washington	MD1210009	Old Forge Elementary School	Wtp 1 - Old Forge Es	9/17/2024	Finished	6.8	82.3	19.9	<RL	3.74	1.45	66.5	<RL	<RL	<RL	<RL	<RL	3.73	9.43	<RL	3.57	3.61	1.19	1.52	<RL	<RL	<RL	<RL	<RL	<RL	<RL
Washington	MD1210016	I-70 Auto Mall	Gmc/ Service Center Wtp	8/17/2023	Finished	NA	<RL	<RL	<RL	<RL	<RL	<RL	<RL	<RL	<RL	<RL	<RL	<RL	<RL	<RL	<RL	<RL	<RL	<RL	<RL	<RL	<RL	<RL	<RL	<RL	<RL
Washington	MD1210016	I-70 Auto Mall	Subaru Wtp	8/17/2023	Finished	NA	<RL	<RL	<RL	<RL	<RL	<RL	<RL	<RL	<RL	<RL	<RL	<RL	<RL	<RL	<RL	<RL	<RL	<RL	<RL	<RL	<RL	<RL	<RL	<RL	<RL
Washington	MD1210018	Blaine Window Hardware, Inc.	Blaine Window Wtp - Well 1	8/17/2023	Finished	NA	7.01	<RL	<RL	<RL	<RL	<RL	<RL	<RL	<RL	<RL	<RL	<RL	<RL	<RL	<RL	<RL	<RL	<RL	<RL	<RL	<RL	<RL	<RL	<RL	<RL
Washington	MD1210020	Central Precision	Central Precision Wtp	9/6/2023	Finished	NA	<RL	<RL	<RL	<RL	<RL	<RL	<RL	<RL	<RL	<RL	<RL	<RL	<RL	<RL	<RL	<RL	<RL	<RL	<RL	<RL	<RL	<RL	<RL	<RL	<RL
Washington	MD1211068	Yogi Bears Jellystone Park	Wtp 1 Well 1	9/12/2023	Finished	NA	3.75	2.13	<RL	3.12	<RL	<RL	<RL	<RL	<RL	<RL	<RL	<RL	<RL	<RL	2.06	<RL	<RL	<RL	<RL	<RL	<RL	<RL	<RL	<RL	<RL
Washington	MD1211068	Yogi Bears Jellystone Park	Wtp 2 Well 2	9/12/2023	Finished	NA	<RL	<RL	<RL	3.48	<RL	<RL	<RL	<RL	<RL	<RL	<RL	<RL	<RL	<RL	2.35	<RL	<RL	<RL	<RL	<RL	<RL	<RL	<RL	<RL	<RL
Washington	MD1211068	Yogi Bears Jellystone Park	Wtp 3 Wells WL03-WL05	9/12/2023	Finished	NA	<RL	<RL	<RL	2.77	<RL	<RL	<RL	<RL	<RL	<RL	<RL	<RL	<RL	<RL	1.88	<RL	<RL	<RL	<RL	<RL	<RL	<RL	<RL	<RL	<RL
Wicomico	MD1220004	Transtech Inc.	Wtp 1 - Well 1 & 2	10/2/2024	Finished	NA	<RL	<RL	<RL	<RL	<RL	<RL	<RL	<RL	<RL	<RL	<RL	<RL	<RL	<RL	<RL	<RL	<RL	<RL	<RL	<RL	<RL	<RL	<RL	<RL	<RL
Wicomico	MD1220007	Salisbury Christian School	Raw Tap @ Well 3 W941404	12/19/2023	Raw	NA	<RL	<RL	<RL	<RL	<RL	<RL	<RL	<RL	<RL	<RL	<RL	<RL	<RL	<RL	<RL	<RL	<RL	<RL	<RL	<RL	<RL	<RL	<RL	<RL	<RL

[illegible]

Phase 5 PFAS Sample Results

County	PWSID	System Name	Facility Source	Sample Collection Date	Sample Type	HI	PFOS	PFOA	HFPO-DA	PFBS	PFNA	PFHxS	11CI-PF3OUdS	ADONA	9CI-PF3ONS	PFDA	PFDOA	PFHpA	PFHxA	PFUnDA	PFBA	PFPeA	PFPeS	PFHpS	4-2 FTS	6-2 FTS	8-2 FTS	PFEESA	PFMPA	PFMBA	NFDHA
Worcester	MD1230071	West Ocean City Business Park	W Oc Business Park Wtp	9/17/2024	Finished	NA	<RL	<RL	<RL	<RL	<RL	<RL	<RL	<RL	<RL	<RL	<RL	<RL	<RL	<RL	<RL	<RL	<RL	<RL	<RL	<RL	<RL	<RL	<RL	<RL	<RL
Worcester	MD1230072	Seaside Christian Academy	Ocean City Baptist 1 Wo941405	7/30/2024	Finished	NA	<RL	<RL	<RL	<RL	<RL	<RL	<RL	<RL	<RL	<RL	<RL	<RL	<RL	<RL	<RL	<RL	<RL	<RL	<RL	<RL	<RL	<RL	<RL	<RL	<RL
Worcester	MD1230073	Nock's Tire Service, Inc.	Nocks Auto Body - Well 1	10/15/2024	Finished	NA	<RL	<RL	<RL	<RL	<RL	<RL	<RL	<RL	<RL	<RL	<RL	<RL	<RL	<RL	<RL	<RL	<RL	<RL	<RL	<RL	<RL	<RL	<RL	<RL	<RL
Worcester	MD1230074	Pavilions Office Park	Pavilions Wtp	12/12/2024	Finished	NA	<RL	<RL	<RL	<RL	<RL	<RL	<RL	<RL	<RL	<RL	<RL	<RL	<RL	<RL	<RL	<RL	<RL	<RL	<RL	<RL	<RL	<RL	<RL	<RL	<RL
Worcester	MD1230077	Snow Hill Christian Nursery	Well 2 (New)	7/22/2024	Finished	NA	<RL	<RL	<RL	<RL	<RL	<RL	<RL	<RL	<RL	<RL	<RL	<RL	<RL	<RL	<RL	<RL	<RL	<RL	<RL	<RL	<RL	<RL	<RL	<RL	<RL
Worcester	MD1230079	Most Blessed Sacrament School	Well Wo942863	7/30/2024	Finished	NA	<RL	<RL	<RL	<RL	<RL	<RL	<RL	<RL	<RL	<RL	<RL	<RL	<RL	<RL	<RL	<RL	<RL	<RL	<RL	<RL	<RL	<RL	<RL	<RL	<RL
Worcester	MD1230080	Herring Creek Professional Center	Wtp - Well 1	10/16/2024	Finished	NA	<RL	<RL	<RL	<RL	<RL	<RL	<RL	<RL	<RL	<RL	<RL	<RL	<RL	<RL	<RL	<RL	<RL	<RL	<RL	<RL	<RL	<RL	<RL	<RL	<RL
Worcester	MD1230081	Atlantic General (Prev Gina Renee Plaza)	Wtp Well 1	9/17/2024	Finished	NA	<RL	<RL	<RL	<RL	<RL	<RL	<RL	<RL	<RL	<RL	<RL	<RL	<RL	<RL	<RL	<RL	<RL	<RL	<RL	<RL	<RL	<RL	<RL	<RL	<RL
Worcester	MD1230086	Eastern Shore Early Learning Center	Well 1 Wo950953	7/30/2024	Finished	NA	<RL	<RL	<RL	<RL	<RL	<RL	<RL	<RL	<RL	<RL	<RL	<RL	<RL	<RL	<RL	<RL	<RL	<RL	<RL	<RL	<RL	<RL	<RL	<RL	<RL
Worcester	MD1231183	Duck In And Mcdonalds And Dollar General	Wtp 1 Well 1	10/24/2024	Finished	NA	<RL	<RL	<RL	<RL	<RL	<RL	<RL	<RL	<RL	<RL	<RL	<RL	<RL	<RL	<RL	<RL	<RL	<RL	<RL	<RL	<RL	<RL	<RL	<RL	<RL
Worcester	MD1231220	Bali Hi Rv Park	Wtp 1 - Well 1 (Front Well)	10/3/2024	Finished	NA	0.858	0.564	<RL	<RL	<RL	<RL	<RL	<RL	<RL	<RL	<RL	<RL	<RL	<RL	<RL	<RL	<RL	<RL	<RL	<RL	<RL	<RL	<RL	<RL	<RL
Worcester	MD1231220	Bali Hi Rv Park	Wtp 2- Well 2 (Back Well)	11/22/2024	Finished	NA	0.509	<RL	<RL	<RL	<RL	<RL	<RL	<RL	<RL	<RL	<RL	<RL	<RL	<RL	<RL	<RL	<RL	<RL	24.1	<RL	<RL	<RL	<RL	<RL	<RL
Worcester	MD1231275	Island Resort Campground	Well 1	9/17/2024	Finished	NA	<RL	<RL	<RL	<RL	<RL	<RL	<RL	<RL	<RL	<RL	<RL	<RL	<RL	<RL	<RL	<RL	<RL	<RL	<RL	<RL	<RL	<RL	<RL	<RL	<RL