



STATE OF
MARYLAND



DEPARTMENT OF THE ENVIRONMENT
WATER AND SCIENCE ADMINISTRATION
WATER QUALITY CERTIFICATION

24-WQC-0046

EFFECTIVE DATE: February 18, 2025

CERTIFICATION HOLDER: Maryland Department of Transportation
State Highway Administration
707 N. Calvert Street
Baltimore, MD 21202
Attn: Ms. Nora Bucke

PROJECT LOCATION: US 219 between Cash Valley Road and
approximately 650 feet northeast of Mt.
Pleasant Lane, Garrett County

UNDER AUTHORITY OF SECTION 401 OF THE FEDERAL WATER POLLUTION CONTROL ACT AND ITS AMENDMENTS AND IN ACCORDANCE WITH §9-313 THROUGH §9-323, INCLUSIVE, OF THE ENVIRONMENT ARTICLE, ANNOTATED CODE OF MARYLAND, THE WATER AND SCIENCE ADMINISTRATION (ADMINISTRATION or DEPARTMENT) HAS DETERMINED THAT THE REGULATED ACTIVITY DESCRIBED IN THE REQUEST FOR CERTIFICATION FOR THE REPLACEMENT AND REALIGNMENT OF BRIDGE NO. 1102400 ON US 219 OVER THE YOUGHIOGHENY RIVER AND ASSOCIATED STREAM AND WETLAND MITIGATION ASSOCIATED WITH US ARMY CORPS AUTHORIZATION 202361316, WILL NOT VIOLATE MARYLAND'S WATER QUALITY STANDARDS, IF CONDUCTED IN ACCORDANCE WITH THE CONDITIONS OF THIS CERTIFICATION AND WITH ALL TERMS AND CONDITIONS OF THIS CERTIFICATION.

THIS CERTIFICATION DOES NOT RELIEVE THE APPLICANT OF RESPONSIBILITY FOR OBTAINING ANY OTHER APPROVALS, LICENSES, OR PERMITS IN ACCORDANCE WITH FEDERAL, STATE, OR LOCAL REQUIREMENTS AND DOES NOT AUTHORIZE COMMENCEMENT OF THE PROPOSED PROJECT. A COPY OF THIS REQUIRED CERTIFICATION HAS BEEN SENT TO THE CORPS OF ENGINEERS. THE CERTIFICATION HOLDER SHALL COMPLY WITH THE CONDITIONS LISTED BELOW.

PROJECT DESCRIPTION

Regulated activities are associated with the replacement and realignment of Bridge No. 1102400 on US 219 over the Youghiogheny River and associated stream and wetland mitigation. The work includes replacing the existing bridge and realigning the existing roadway, relocating the Youghiogheny River, realigning and restoring a tributary to the Youghiogheny River, constructing wetlands on-site, relocating existing utilities, installing stormwater management facilities, and using temporary erosion and sediment controls. This approval authorizes temporary and permanent impacts to scrub shrub nontidal wetland, emergent nontidal wetland, 25-foot nontidal wetland buffer, the Youghiogheny River and its tributaries, and the 100-year nontidal floodplain. The project is located along US 219, between Cash Valley Road and approximately 650 feet northeast of Mt Pleasant Lane, in Garrett County.

A Certification Pre-Filing Meeting was requested on November 15, 2024, and the Certification Request was received on November 19, 2024. The Administration satisfied statutory and regulatory public notice requirements by placing this WQC on Public Notice from December 15, 2024 to January 15, 2025 on the Maryland Department of the Environment's Public Notice webpage (and advertising in the Garrett County Republican on December 18, 2024).

SPECIAL CONDITIONS

1. **Floodplain Action and Prevention Plan**: Ensure water quality standards are maintained during significant weather events by adhering to the approved Floodplain Action and Prevention Plan dated December 2, 2024. Modifications to the Floodplain Action and Prevention Plan shall be submitted for review and approval by the Department.
2. **Submittal of Plans**: Provide a final set of plans, including a Bridge Demolition Plan and a detailed Maintenance of Stream Flow (MOSF) Plan, to the Department for review and approval prior to construction.
3. **Stream Realignment and Stabilization Monitoring**: Monitor the stream realignment and stabilization project associated with the replacement of US 219 Bridge No. 1102400, which shall be approved through the Phase II Mitigation Plan Approval Letter, for five (5) out of ten (10) years; on years two, three, five, seven, and ten, following the completion of construction of the project, or as amended by the Phase II Mitigation Plan Approval Letter. The monitoring shall identify and evaluate changes in 1) channel cross-section, pattern and profile; 2) bed materials; 3) channel stability; 4) structure stability and condition; and 5) vegetation viability. The monitoring effort may include topographic surveys of monumented cross-sections within the realigned channel segment, visual field observations, photographic documentation, vegetation viability measurements, and identify any necessary corrective measures. Submit reports on the results of the monitoring efforts for the stream restoration project to the Department by the end of each monitoring year. Coordinate with the regulatory agencies concerning applicable remedial measures for any identified project failures and shall correct any project failures within one year of their identification. If the project is determined to be stable prior to the end of the stream monitoring period, the Certification Holder may request an early release from stream monitoring requirements. Upon approval, the Phase II conceptual mitigation plan, and subsequent Phase II approval letter from the Program, become part of these Certification conditions for the Project for the purposes of any federal license or permit.
4. **Wetland and Stream Mitigation Monitoring**: Monitor the wetland and stream mitigation site project for five (5) out of ten (10) years; on years two, three, five, seven, and ten, following the completion of construction of the project in accordance with the requirements in the Phase II Mitigation Plan and Approval Letter. Wetlands that are temporarily impacted within and just outside of the wetland mitigation grading areas (Wetlands 1B, D, and H) shall be included as part of the required monitoring. Upon approval, the Phase II conceptual mitigation plan, and subsequent Phase II approval letter from the Program, become part of these Certification conditions for the Project for the purposes of any federal license or permit.
5. **Temporary Wetland and Waterway Disturbance**: Minimize impacts to wetlands and their buffers and waterways, including the nontidal 100-year nontidal floodplain to the maximum

extent practicable. Restore any temporarily disturbed wetlands, wetland buffers, waterways, and nontidal 100-year nontidal floodplains to pre-construction conditions or better, as approved by the Department, prior to completion of the Project.

6. **Mitigation:** Mitigate the loss of nontidal wetlands and streams. Pursuant to COMAR 26.23.04, create wetlands and restore streams in accordance with a Phase II conceptual mitigation plan that is approved by the Mitigation and Technical Assistance Section (Section) of the Department. Upon approval, the Phase II conceptual mitigation plan, and subsequent Phase II approval letter from the Department, become part of these Certification conditions for the Project for the purposes of any federal license or permit. Upon approval, the Phase II conceptual mitigation plan, and subsequent Phase II approval letter from the Program, become part of these Certification conditions for the Project for the purposes of any federal license or permit.
7. **Construction Debris:** Permittee shall ensure debris resulting from bridge and roadway demolition or construction activities does not enter the wetlands or waterways to the maximum extent practicable. Debris shall be removed and disposed of in an upland disposal area.
8. **Instream Construction Prohibition:** Activities within all stream channels are prohibited during certain times of the year as determined by the classification of the stream in COMAR 26.08.02.08, unless specifically approved by the Department's Wetlands and Waterways Protection Program (Program), including the following:
 - a. Youghiogheny River and its tributaries are Use III-P waterways; in-stream work may not be conducted from October 1 through April 30, inclusive, of any year.

GENERAL CONDITIONS

1. Meet all water quality-related performance standards and conditions required by the Department in any State-issued authorization for activities in Waters of the United States to ensure that any discharges will comply with water quality standards in COMAR 26.08.02 and other water quality requirements of State law or regulation.
2. Avoid placing structures or conducting activities that entangle or interfere with the movement of aquatic life, fish, or other wildlife.
3. Prevent the spread of non-native species that may cause adverse effects on the aquatic ecosystem.
4. Implement and comply with all final approved plans, permits, and modifications that are approved by the State and/or the Corps of Engineers, as applicable. The approved plans, permits and modifications by the Department and/or the U.S. Army Corps of Engineers are incorporated by reference into this Certification.
5. Meet the requirements in Annotated Code of Maryland, Environment Article, Title 4 and COMAR 26.17.01, including obtaining and complying with an approved erosion and sediment control plan, and following the stabilization requirements set forth in COMAR 26.17.01.07 and the "2011 Maryland Standards and Specifications for Soil Erosion and Sediment Control (2011 Standards)" as amended.
6. Minimize any disturbance to the bottom of waterways and prevent sediment transport into adjacent State waters.
7. Remove and dispose of all unused fill and construction materials in a manner which will prevent their entry into waters of this State.
8. Adhere to the construction time of year restrictions, unless waived or amended by the Program, as identified in a State authorization.

9. Obtain any other authorizations or approvals that the Department requires, including General Permits, and comply with all conditions of such authorizations or approvals.
10. Obtain any required authorizations or approvals from other State, federal, or local agencies.
11. Refrain from causing any injury to private property, invasion of rights, or infringement of federal, State, or local laws or regulations.
12. Inspection and entry. The Certification Holder shall allow the Department, or an authorized representative, upon the presentation of credentials and other documents as may be required by law, to:
 - a. Enter upon the Certification Holder's premises where a certified activity or operation is located or conducted, or where records must be kept under the conditions of this Certification;
 - b. Have access to and copy, at reasonable times, any records that must be kept under the conditions of this Certification;
 - c. Inspect at reasonable times any facilities, equipment (including monitoring and control equipment), practices, or operations regulated or required under this Certification; and
 - d. Sample or monitor at reasonable times, for the purposes of assuring compliance or as otherwise authorized by Program, any substances or parameters at any location.
 - e. Allow the Department's authorized representatives access to the Project during normal business hours to conduct inspections and evaluations of operations and records to verify compliance with this Certification.
13. For projects that clear, grade, develop, or redevelop any land, implement a Department-approved plan that provides stormwater management to control or manage runoff from such activities during and after construction, except as provided within the applicable *Maryland Stormwater Management and Erosion & Sediment control Guidelines for State and Federal Projects*.

STATEMENTS OF NECESSITY AND CITATIONS

1. **Statement of Necessity for Special Conditions 1-8 and General Conditions 1-13:** These conditions are necessary to ensure that water quality standards are met and designated uses are maintained.

Citations: Federal and State laws which authorize these conditions include: 33 U.S.C. § 1341(a), (b), & (d); 33 U.S.C. § 1251(b); 33 U.S.C. § 1370; Md. Ann. Code, Env. Article, Title 1, Subtitles 3 and 4; Md. Ann. Code, Env. Article, Title 5, Subtitles 5 and 9; Md. Ann. Code, Env. Article, Title 9, Subtitle 3; COMAR 26.08; COMAR 26.08.02.02; 26.08.02.03; COMAR 26.17.04; COMAR 26.23; and COMAR 26.23.02.06.

2. **Statement of Necessity for Special Conditions 1 and 7:** Activities which result or may result in a discharge to regulated waters, including replacement of wetland/water resources as an offset/mitigation, may require monitoring to ensure that water quality standards are met and designated uses are maintained, and to determine if remedial measures are needed to restore compliance with water quality standards if they are not met as a result of the discharge. The conditions are also necessary to ensure that fill material does not increase turbidity or other parameters in violation of narrative or numeric water quality standards or interfere with designated uses, and to ensure that offsets to regulated waters are implemented successfully.

Citations: State laws which authorize these conditions include MD. Env. Code Ann. §9-303.1, §9-313 - 9-316, §9-319 - 9-325, §9-327 and §9-328; MD. Env. Code Ann. §5-901 - 5-911; COMAR 26.08.01.02; COMAR 26.08.02.01; COMAR 26.08.02.02; COMAR 26.08.02.03; COMAR 26.08.02.09; COMAR 26.23.

3. Statement of Necessity for Special Conditions 1, 3-8 and General Condition 12: These conditions require precise actions to ensure compliance with water quality standards. Site inspection authority provides a means to verify that limits, methods, and other requirements are met to ensure that water quality standards are met and designated uses are maintained. These conditions ensure that regulated activities are conducted and projects are completed according to terms of this Certification, while allowing for review of in-field modifications to ensure that water quality standards are met.

Citations: Federal and State laws which authorize these conditions include: 33 U.S.C. § 1341(a), (b), & (d); 33 U.S.C. § 1251(b); 33 U.S.C. § 1370; Md. Ann. Code, Env. Article, Title 1, Subtitles 3 and 4; Md. Ann. Code, Env. Article, Title 5, Subtitles 5 and 9; Md. Ann. Code, Env. Article, Title 9, Subtitle 3; Md. Ann. Code, Env. Article, Title 16; COMAR 26.08; COMAR 26.08.02.02; COMAR 26.08.02.03; COMAR 26.08.02.03-3; COMAR 26.23.02.06; COMAR 26.23; and COMAR 26.17.04.

4. Statement of Necessity for Special Conditions 2-6: Unauthorized discharges may enter regulated waters as result of activity or structural failure. A plan to address and monitor for unauthorized discharges will prevent or address further violations of water quality standards or failure of water to meet designated uses, including uses of growth and propagation of fish, other aquatic life, wildlife, as well as general water quality criteria that waters would not be polluted by substances in amounts sufficient to be unsightly or create a nuisance.

Citations: State laws which authorize these conditions include MD. Env. Code Ann. §9-303.1, §9-313 - 9-316, §9-319 - 9-325, §9-327 and §9-328; COMAR 26.08.02.01; COMAR 26.08.02.02; COMAR 26.08.02.03.

5. Statement of Necessity for Special Conditions 2-6: Nontidal wetlands, buffers, and waterways provide essential habitat, water quality, food, and movement corridors for wildlife, and support water contact recreation, protection of nontidal aquatic life, and protection of waters. Adaptive plans allow for adjustments to ensure that habitat and the associated designated uses are maintained.

Citations: State laws which authorize these conditions include MD. Env. Code Ann. §9-303.1, §9-313 - 9-316, §9-319 - 9-325, §9-327 and §9-328; MD. Env. Code Ann. §5-901 - 5-911; MD. Env. Code Ann. §1-404 and §5-501 - 5-514; COMAR 26.08.02.02; COMAR 26.08.02.03; COMAR 26.08.02.03-3; COMAR 26.17.04; and COMAR 26.23.

6. Statement of Necessity for Special Condition 8 and General Condition 8: Restrictions on instream construction protect designated uses for propagation and growth of fish, other aquatic life, and wildlife.

Citations: Federal and State laws which authorize these conditions include: 33 U.S.C. § 1341(a), (b), & (d); 33 U.S.C. § 1251(b); 33 U.S.C. § 1370; Md. Ann. Code, Env. Article, Title 1, Subtitles 3 and 4; Md. Ann. Code, Env. Article, Title 5, Subtitles 5 and 9; Md. Ann. Code, Env. Article, Title 9, Subtitle 3; Md. Ann. Code, Env. Article, Title 16; COMAR 26.08; COMAR 26.08.02.03-3; and COMAR 26.23.02.06.

7. Statement of Necessity for Special Condition 2 and General Condition 2: Movement of aquatic life and passage of flows is essential for the growth and propagation of aquatic life, fish, and other wildlife to meet these designated uses.

Citations: Federal and State laws which authorize these conditions include: 33 U.S.C. § 1341(a), (b), &

(d); 33 U.S.C. § 1251(b); 33 U.S.C. § 1370; Md. Ann. Code, Env. Article, Title 1, Subtitles 3 and 4; Md. Ann. Code, Env. Article, Title 5, Subtitles 5 and 9; Md. Ann. Code, Env. Article, Title 9, Subtitle 3; Md. Ann. Code, Env. Article, Title 16; COMAR 26.08; COMAR 26.08.02.10; COMAR 26.08.02.02; 26.08.02.03; COMAR 26.17.01; COMAR 26.23.02.06; COMAR 26.23; COMAR 26.24; and COMAR 26.17.04.

8. Statement of Necessity for General Condition 3: Nuisance or non-native species may spread and disrupt and dislodge native species, including fish or other aquatic life, from their habitat, leading to declines in distribution, density, growth, or propagation.

Citations: State laws which authorize these conditions include MD. Env. Code Ann. §5-901 - 5-911; COMAR 26.23.02.06; and COMAR 26.23.

9. Statement of Necessity for Special Conditions 1-2 and General Conditions 4-7 and 13: Fill or construction material within or adjacent to regulated resources or other earth disturbance may result in discharges that impact water quality, clarity, growth and propagation of fish, other aquatic life, wildlife, potable water, or other designated uses; and cause or contribute to a failure to meet general water quality criteria that waters not be polluted by substances in amounts sufficient to be harmful, unsightly, or create a nuisance.

Citations: Federal and State laws which authorize these conditions include: 33 U.S.C. § 1341(a), (b), & (d); 33 U.S.C. § 1251(b); 33 U.S.C. § 1370; Md. Ann. Code, Env. Article, Title 1, Subtitles 3 and 4; Md. Ann. Code, Env. Article, Title 5, Subtitles 5 and 9; Md. Ann. Code, Env. Article, Title 9, Subtitle 3; Md. Ann. Code, Env. Article, Title 16; COMAR 26.08; COMAR 26.08.02.02; COMAR 26.08.02.03; COMAR 26.08.02.10; COMAR 26.17.01; COMAR 26.23.02.06; COMAR 26.23; and COMAR 26.17.04.

10. Statement of Necessity for Special Conditions 1-2 and 7 and General Conditions 4-7 and 13: Material within or adjacent to regulated resources may result in discharges that harm water quality or designated uses.

Citations: Federal and State laws which authorize these conditions include: 33 U.S.C. § 1341(a), (b), & (d); 33 U.S.C. § 1251(b); 33 U.S.C. § 1370; Md. Ann. Code, Env. Article, Title 1, Subtitles 3 and 4; Md. Ann. Code, Env. Article, Title 5, Subtitles 5 and 9; Md. Ann. Code, Env. Article, Title 9, Subtitle 3; Md. Ann. Code, Env. Article, Title 16; COMAR 26.08; COMAR 26.08.02.02; COMAR 26.08.02.03; COMAR 26.23.02.06; COMAR 26.17.04; and COMAR 26.23.

11. Statement of Necessity for Special Condition 8 and General Condition 8: The time of year restrictions are necessary to maintain the designated uses.

Citations: State laws which authorize these conditions include MD. Env. Code Ann. §9-313 - 9-316, §9-319 - 9-320, §9-325, §9-327 and §9-328; COMAR 26.08; COMAR 26.08.02.02; and COMAR 26.08.02.03-3.

12. Statement of Necessity for General Conditions 9-11: These conditions are necessary to clarify the scope of this Certification to ensure compliance with water quality regulations without limiting restrictions through other requirements that also affect water quality.

Citations: Federal and State laws which authorize these conditions include: 33 U.S.C. § 1341(a), (b), &

(d); 33 U.S.C. § 1251(b); 33 U.S.C. § 1370; Md. Ann. Code, Env. Article, Title 1, Subtitles 3 and 4; Md. Ann. Code, Env. Article, Title 5, Subtitles 5 and 9; Md. Ann. Code, Env. Article, Title 9, Subtitle 3; Md. Ann. Code, Env. Article, Title 16; COMAR 26.08, COMAR 26.08.02.10; COMAR 26.23.02.06; COMAR 26.17.04; and COMAR 26.23.

13. Statement of Necessity for Special Condition 6: Mitigation is required to ensure that waters continue to meet designated uses, as losses of wetlands or waterways result in water quality degradation. Wetlands provide essential habitat, water quality, food, and movement corridors for wildlife. Losses may result in discharges which interfere with designated uses, including growth and propagation of fish, other aquatic life, and wildlife through loss of stream channel habitat and wetlands.

Citations: Federal and state laws that authorize this condition include: 33 U.S.C. § 1341(a), (b), & (d); 33 U.S.C. § 1251(b); 33 U.S.C. § 1370; Md. Ann. Code, Env. Article, Title 1, Subtitles 3 and 4; Md. Ann. Code, Env. Article, Title 9, Subtitle 3; Md. Ann. Code, Env. Article, Title 5, Subtitles 5 and 9; Md. Ann. Code, Env. Article, Title 9, Subtitle 3; Md. Ann. Code, Env. Article, Title 16; COMAR 26.08; COMAR 26.08.02.01; COMAR 26.08.02.02; COMAR 26.08.02.07; COMAR 26.08.02.10; COMAR 26.17.04; COMAR 26.23; COMAR 26.23.02.06; COMAR 26.24.

This Certification is valid for the Project identified herein and the associated U.S. Army Corps of Engineers authorization until such time that it expires.

CERTIFICATION APPROVED

Matthew C. Rowe

Matthew C. Rowe (Feb 14, 2025 07:10 EST)

D. Lee Currey, Director
Water and Science Administration

Date 2/14/2025

Tracking Number: 202361316

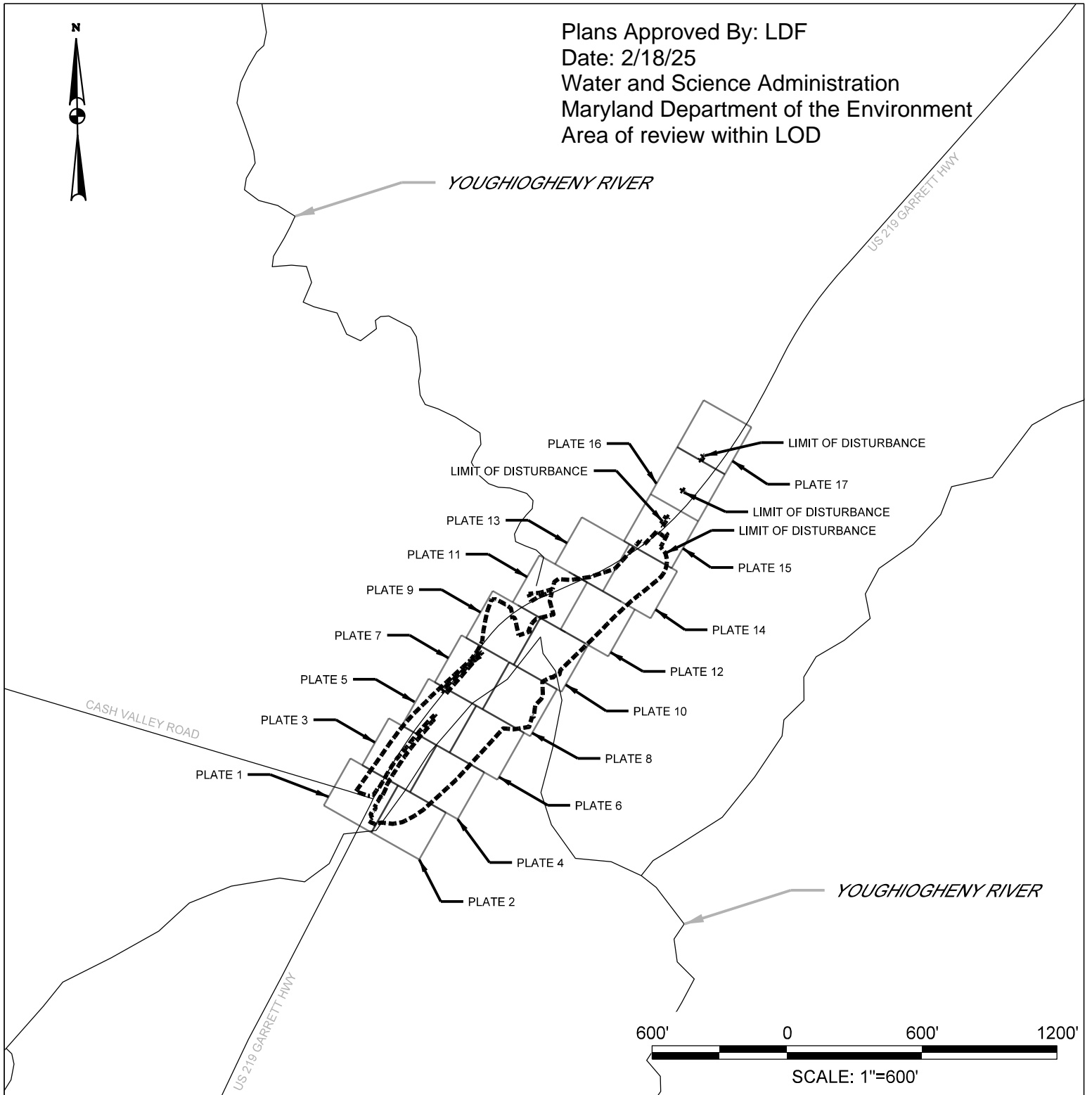
Agency Interest Number: 98651

Effective Date: February 18, 2025

cc: WSA Inspection & Compliance Program
U.S. Army Corps of Engineers



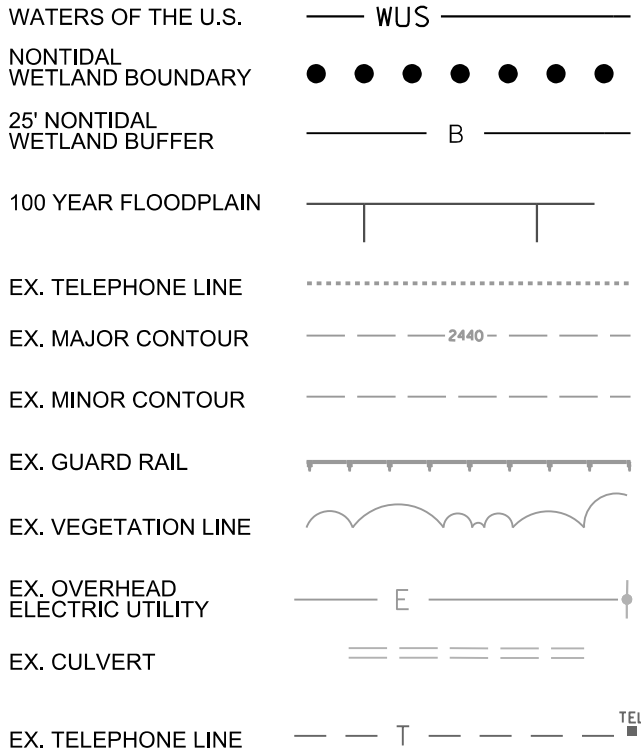
Plans Approved By: LDF
 Date: 2/18/25
 Water and Science Administration
 Maryland Department of the Environment
 Area of review within LOD



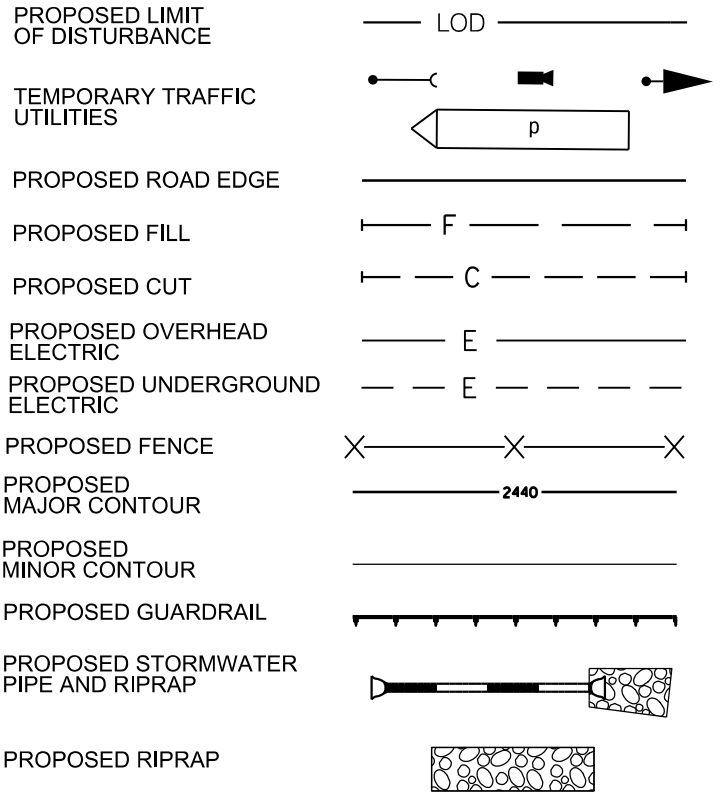
**US 219 BRIDGE 1102400 REPLACEMENT AND
 MITIGATION DESIGN**
 KEY SHEET



EXISTING FEATURES



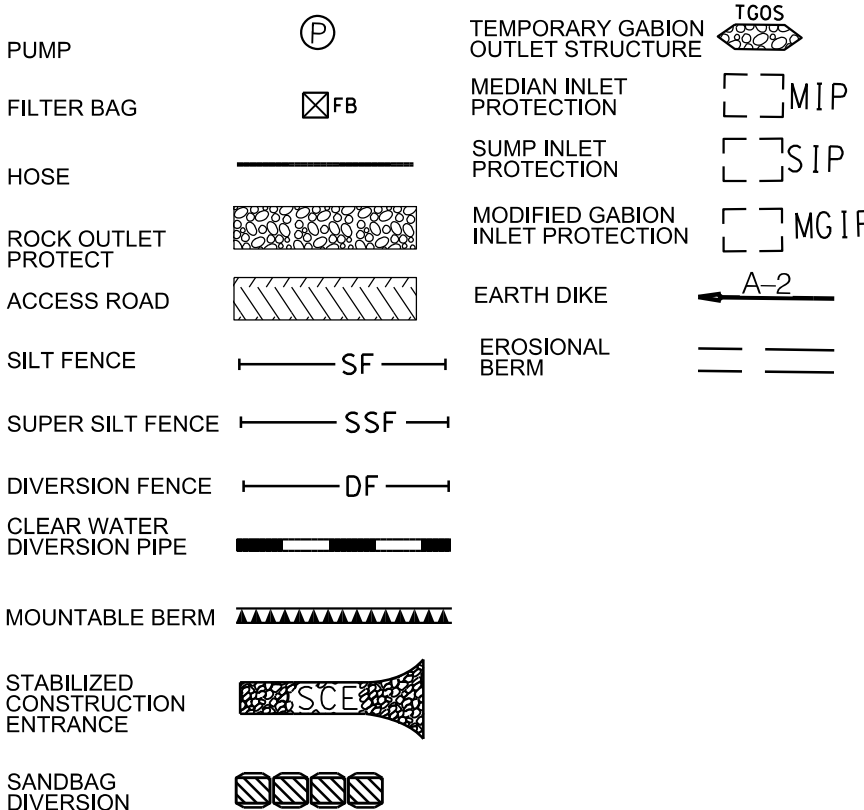
PROPOSED ROADWAY FEATURES



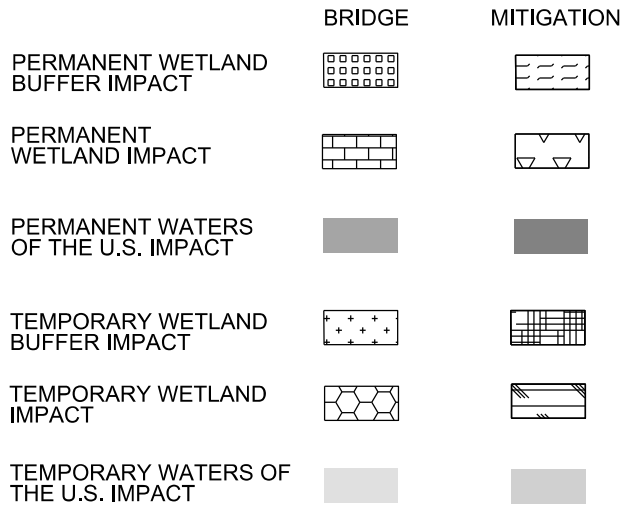
PROPOSED MITIGATION FEATURES



PROPOSED MITIGATION EROSION & SEDIMENT CONTROL



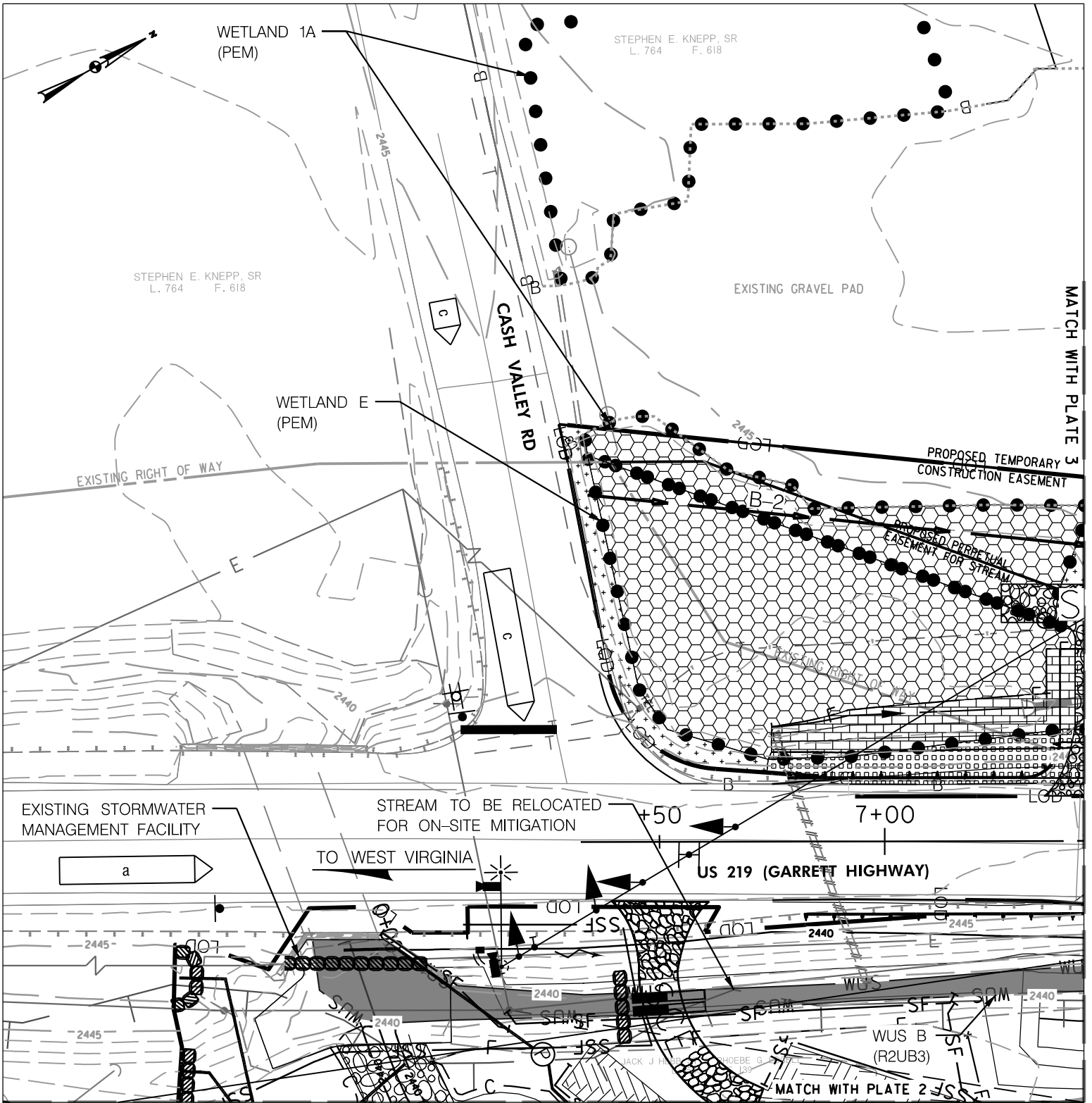
PROPOSED IMPACTS



US 219 BRIDGE 1102400 REPLACEMENT AND MITIGATION DESIGN

LEGEND


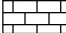
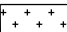




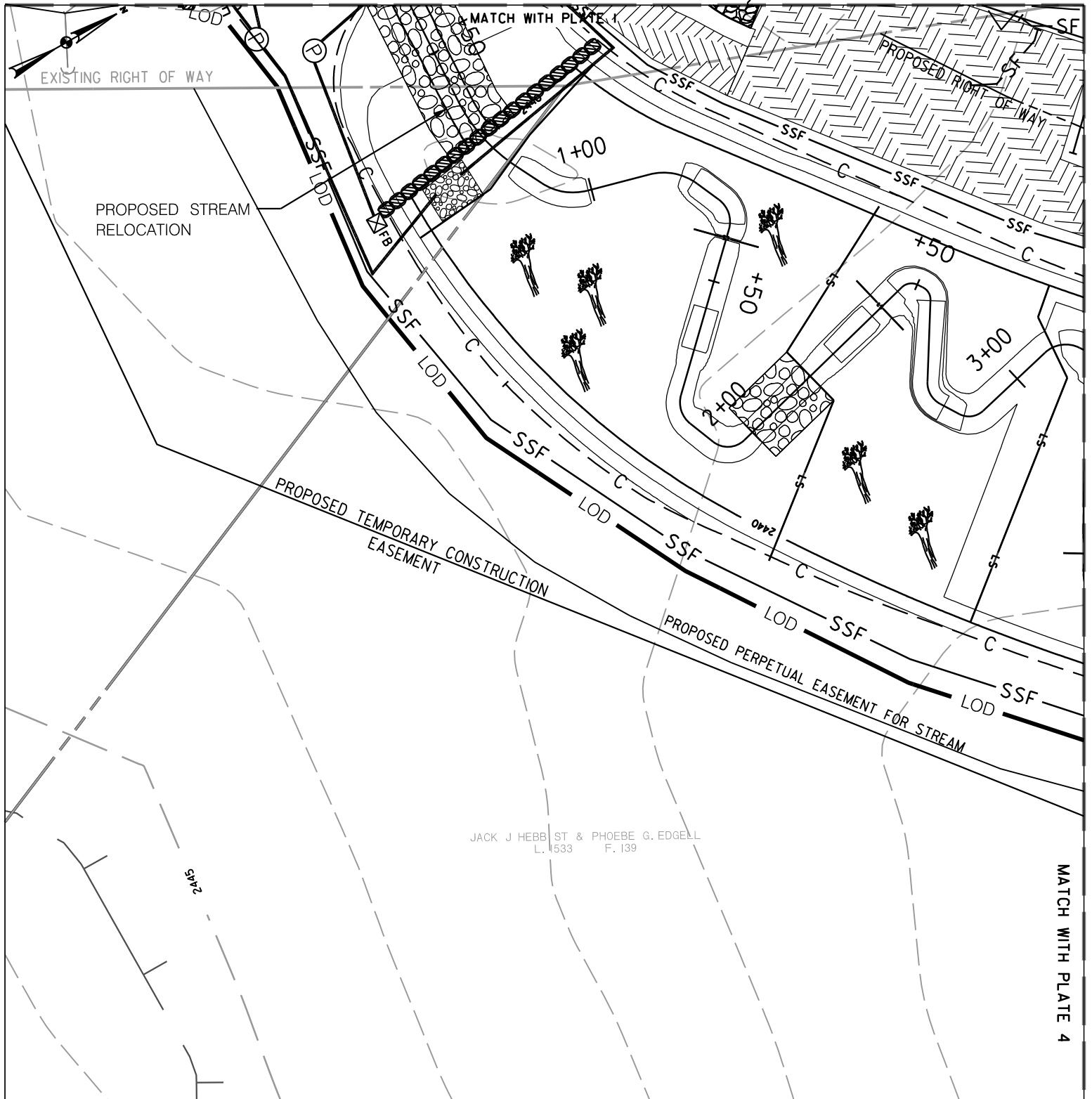


WATERS OF THE U.S. IMPACTS

US 219 BRIDGE 1102400 REPLACEMENT AND MITIGATION DESIGN

IMPACT PLATE 1

IMPACTS:	MITIGATION		BRIDGE REPLACEMENT	
	TEMPORARY	PERMANENT	TEMPORARY	PERMANENT
WETLAND	NONE	NONE	 5,126 SF / 0.12 AC	 713 SF / 0.02 AC
WETLAND BUFFER	NONE	NONE	 600 SF / 0.01 AC	 558 SF / 0.01 AC
WATERWAY	NONE	 1,140 SF / 0.03 AC / 174 LF	NONE	NONE



WATERS OF THE U.S. IMPACTS

IMPACTS:	MITIGATION		BRIDGE REPLACEMENT	
	TEMPORARY	PERMANENT	TEMPORARY	PERMANENT
WETLAND	NONE	NONE	NONE	NONE
WETLAND BUFFER	NONE	NONE	NONE	NONE
WATERWAY	NONE	NONE	NONE	NONE

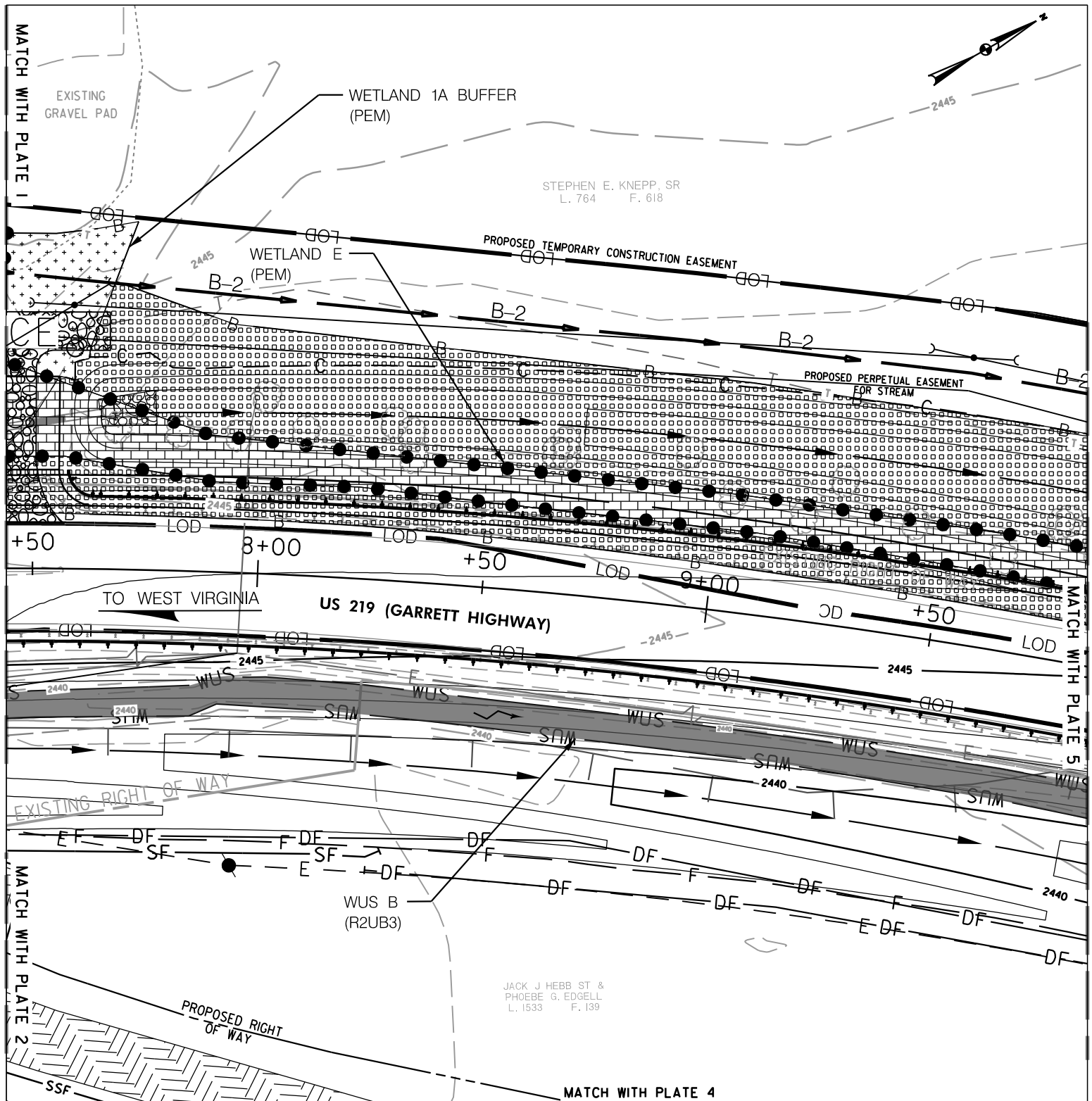
US 219 BRIDGE 1102400 REPLACEMENT AND MITIGATION DESIGN

IMPACT PLATE 2



FLOODPLAIN IMPACT: 21,006 SF / 0.48 AC

NONE

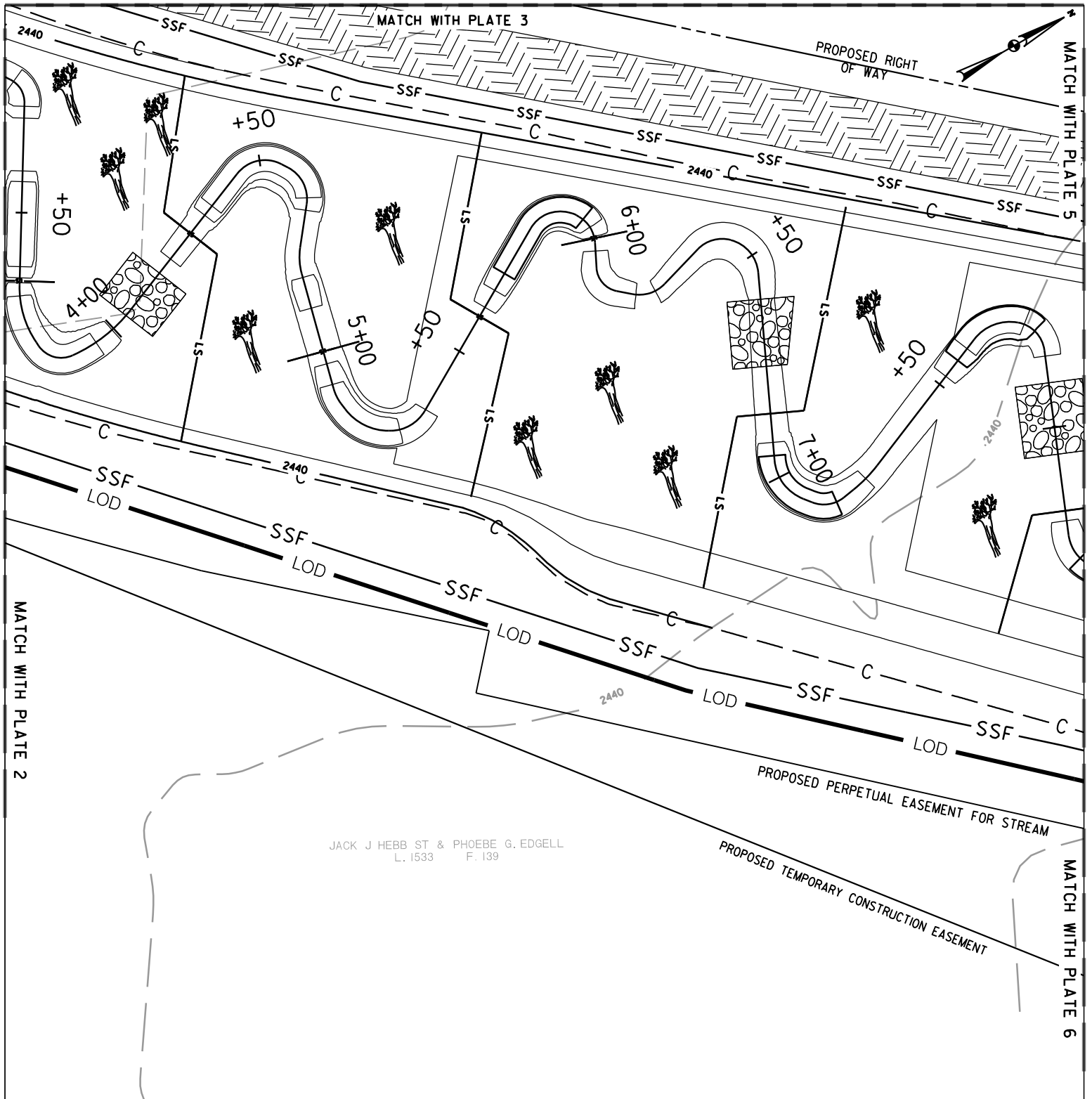


WATERS OF THE U.S. IMPACTS

US 219 BRIDGE 1102400 REPLACEMENT AND MITIGATION DESIGN
IMPACT PLATE 3

IMPACTS:	MITIGATION		BRIDGE REPLACEMENT	
	TEMPORARY	PERMANENT	TEMPORARY	PERMANENT
WETLAND	NONE	NONE	15 SF / 0.0003 AC	2,302 SF / 0.05 AC
WETLAND BUFFER	NONE	NONE	711 SF / 0.02 AC	7,646 SF / 0.18 AC
WATERWAY	NONE	1,549 SF / 0.04 AC / 242 LF	NONE	NONE
FLOODPLAIN IMPACT: 18,372 SF / 0.42 AC			19 SF / 0.0004 AC	





JACK J HEBB ST & PHOEBE G. EDGELL
L. 1533 F. 139

WATERS OF THE U.S. IMPACTS

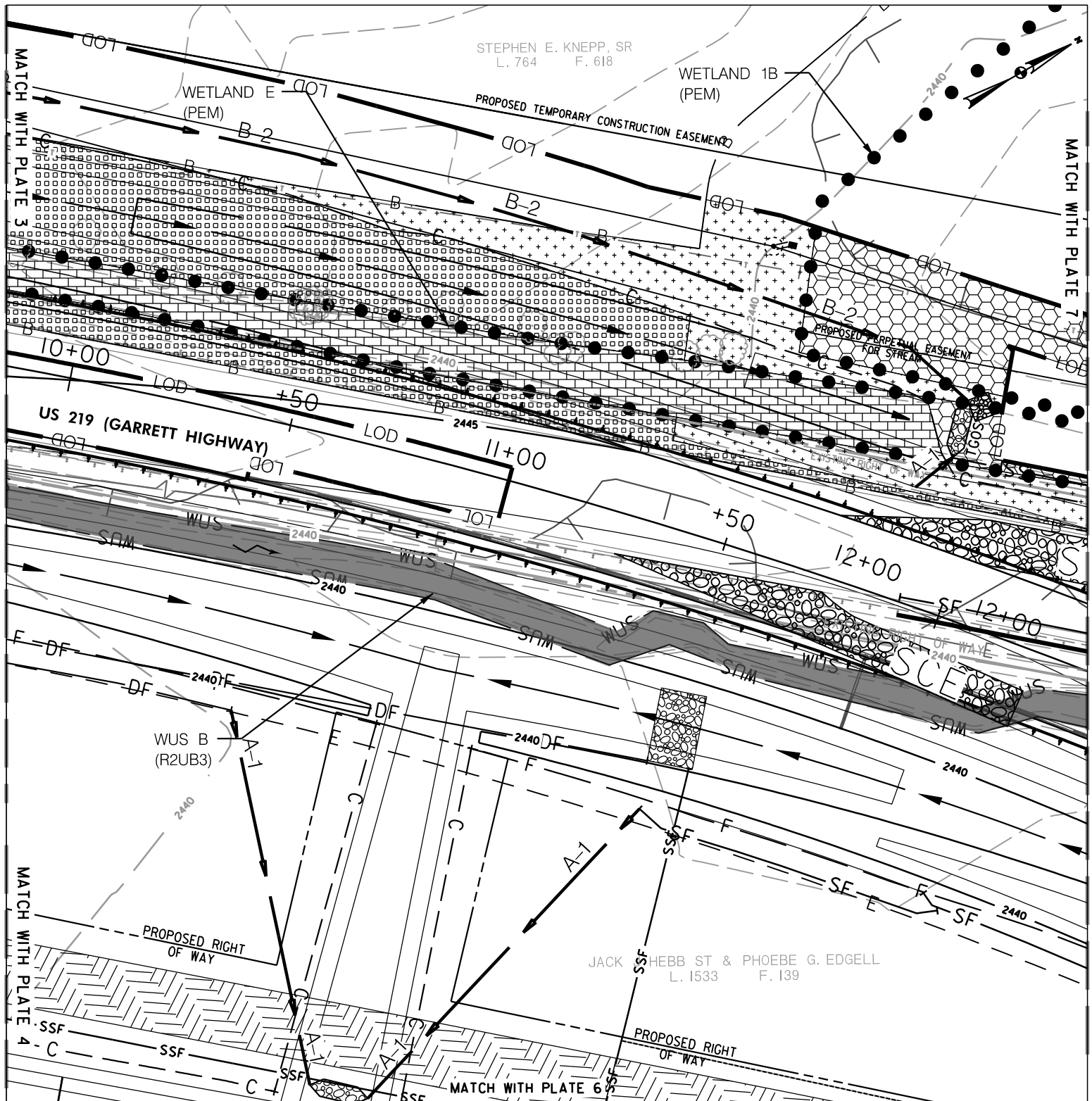
IMPACTS:	MITIGATION		BRIDGE REPLACEMENT	
	TEMPORARY	PERMANENT	TEMPORARY	PERMANENT
WETLAND	NONE	NONE	NONE	NONE
WETLAND BUFFER	NONE	NONE	NONE	NONE
WATERWAY	NONE	NONE	NONE	NONE

**US 219 BRIDGE 1102400 REPLACEMENT AND MITIGATION DESIGN
IMPACT PLATE 4**



FLOODPLAIN IMPACT: 33,718 SF / 0.77 AC

NONE



STEPHEN E. KNEPP, SR
L. 764 F. 618

WETLAND 1B
(PEM)

PROPOSED TEMPORARY CONSTRUCTION EASEMENT

WETLAND E
(PEM)

MATCH WITH PLATE 3

MATCH WITH PLATE 7

US 219 (GARRETT HIGHWAY)

JACK SHEBB ST & PHOEBE G. EDGELL
L. 1533 F. 139

WATERS OF THE U.S. IMPACTS

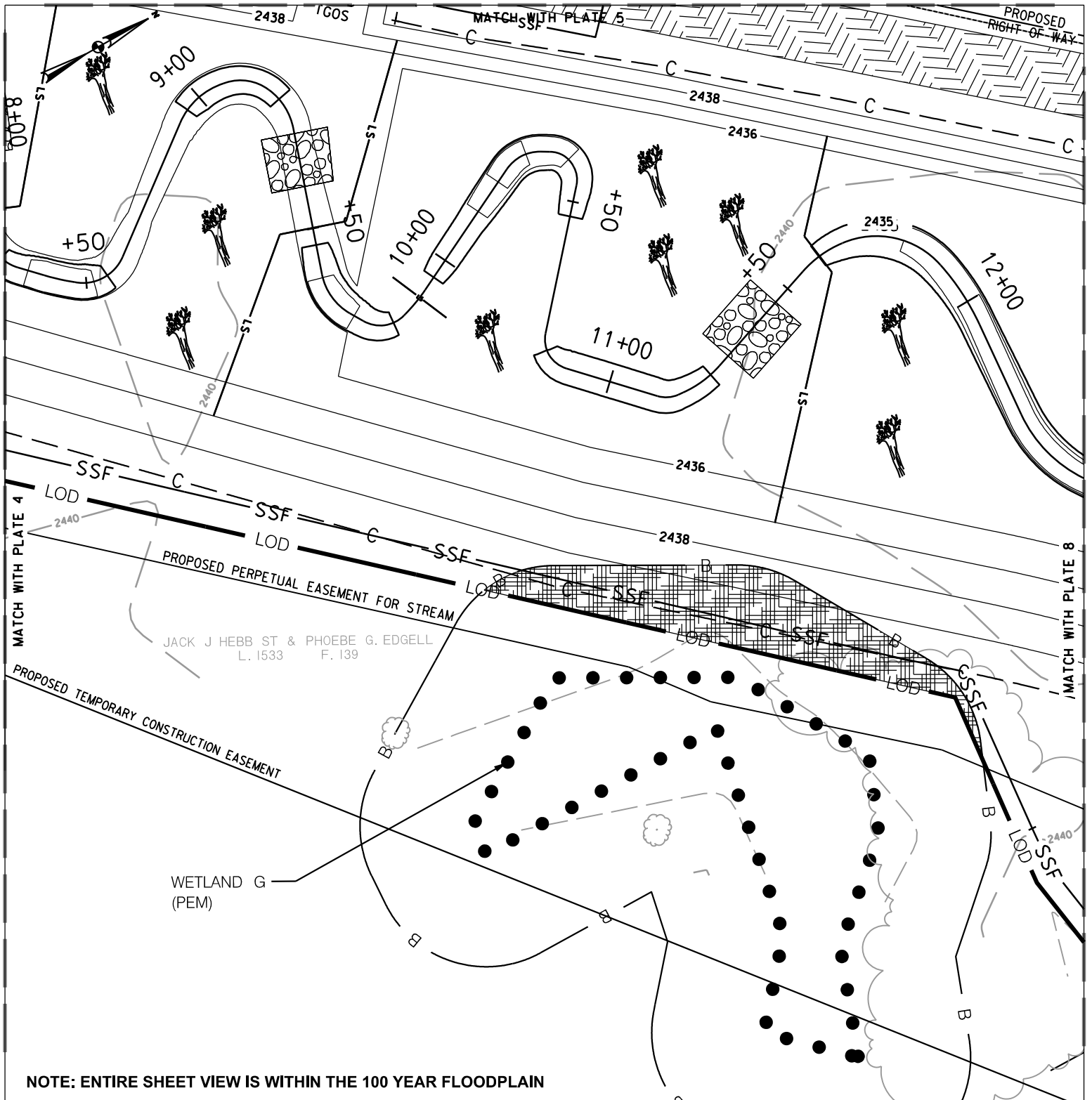
US 219 BRIDGE 1102400 REPLACEMENT AND MITIGATION DESIGN
IMPACT PLATE 5

IMPACTS:	MITIGATION		BRIDGE REPLACEMENT	
	TEMPORARY	PERMANENT	TEMPORARY	PERMANENT
WETLAND	NONE	NONE	1,641 SF / 0.04 AC	2,374 SF / 0.05 AC
WETLAND BUFFER	NONE	NONE	2,562 SF / 0.06 AC	4,296 SF / 0.10 AC
WATERWAY	NONE	1,806 SF / 0.04 AC / 248 LF	NONE	NONE

FLOODPLAIN IMPACT: 25,155 SF / 0.58 AC


3,543 SF / 0.08 AC





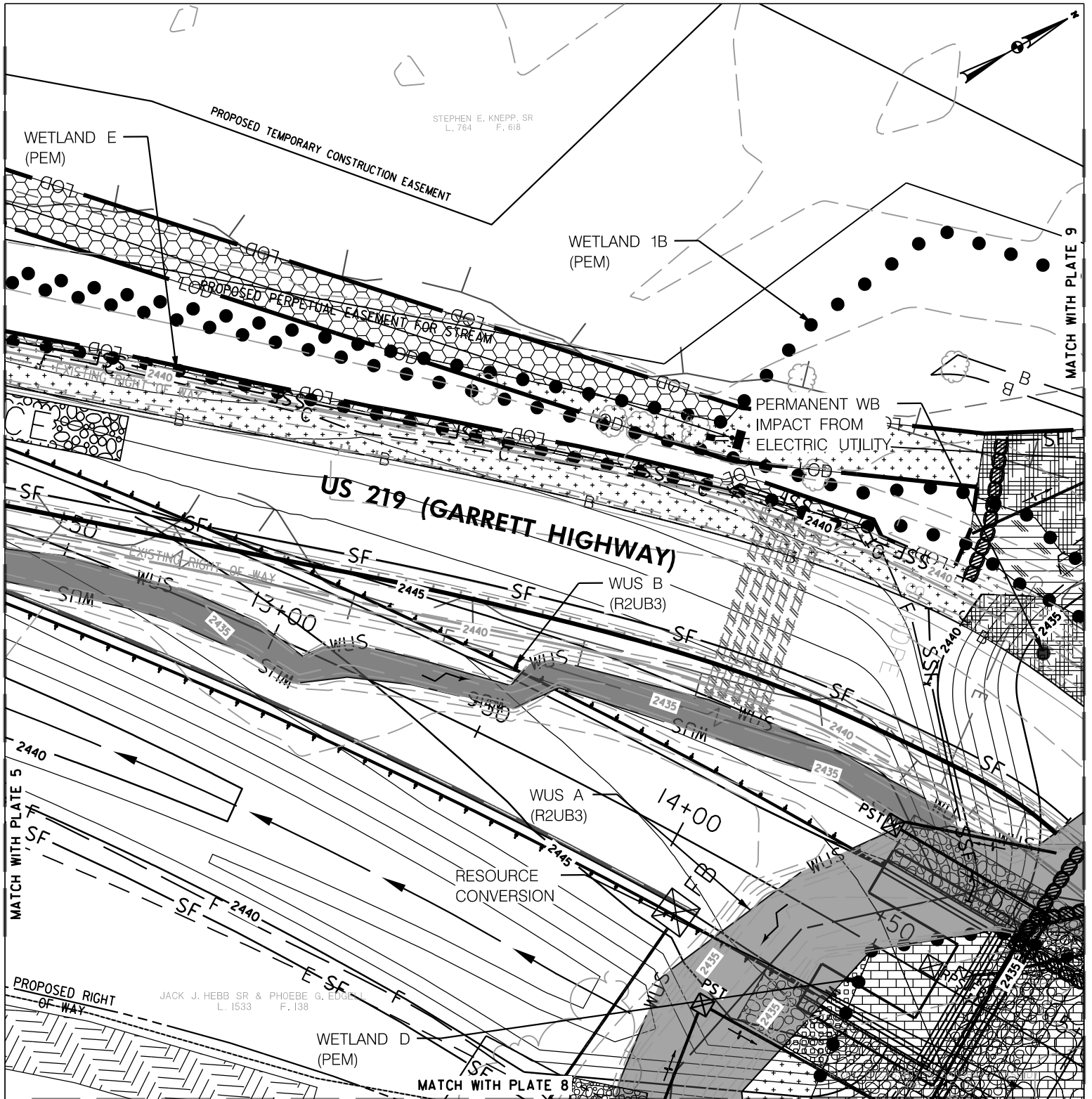
NOTE: ENTIRE SHEET VIEW IS WITHIN THE 100 YEAR FLOODPLAIN

WATERS OF THE U.S. IMPACTS

IMPACTS:	MITIGATION		BRIDGE REPLACEMENT	
	TEMPORARY	PERMANENT	TEMPORARY	PERMANENT
WETLAND	NONE	NONE	NONE	NONE
WETLAND BUFFER	 1,314 SF / 0.03 AC	NONE	NONE	NONE
WATERWAY	NONE	NONE	NONE	NONE
FLOODPLAIN IMPACT: 32,752 SF / 0.75 AC			NONE	

US 219 BRIDGE 1102400 REPLACEMENT AND MITIGATION DESIGN
IMPACT PLATE 6



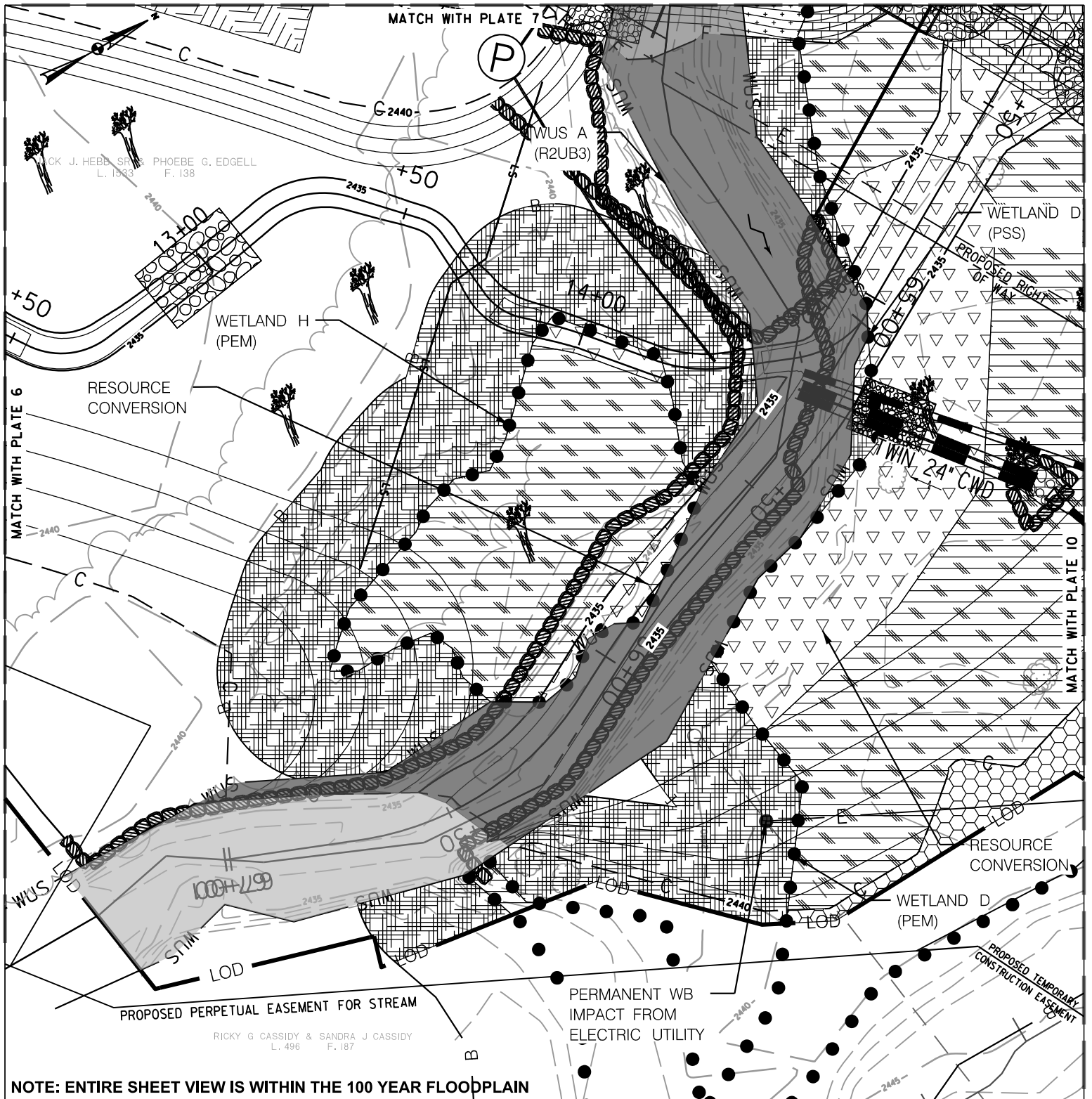


WATERS OF THE U.S. IMPACTS

**US 219 BRIDGE 1102400 REPLACEMENT AND MITIGATION DESIGN
IMPACT PLATE 7**

IMPACTS:	MITIGATION		BRIDGE REPLACEMENT	
	TEMPORARY	PERMANENT	TEMPORARY	PERMANENT
WETLAND	351 SF / 0.01 AC	NONE	2,110 SF / 0.05 AC	1,895 SF / 0.04 AC
WETLAND BUFFER	850 SF / 0.02 AC	NONE	3,398 SF / 0.08 AC	206 SF / 0.01 AC
WATERWAY	NONE	1,520 SF / 0.03 AC / 221 LF	NONE	2,802 SF / 0.06 AC / 114 LF
FLOODPLAIN IMPACT: 15,878 SF / 0.36 AC		4,963 SF / 0.11 AC		





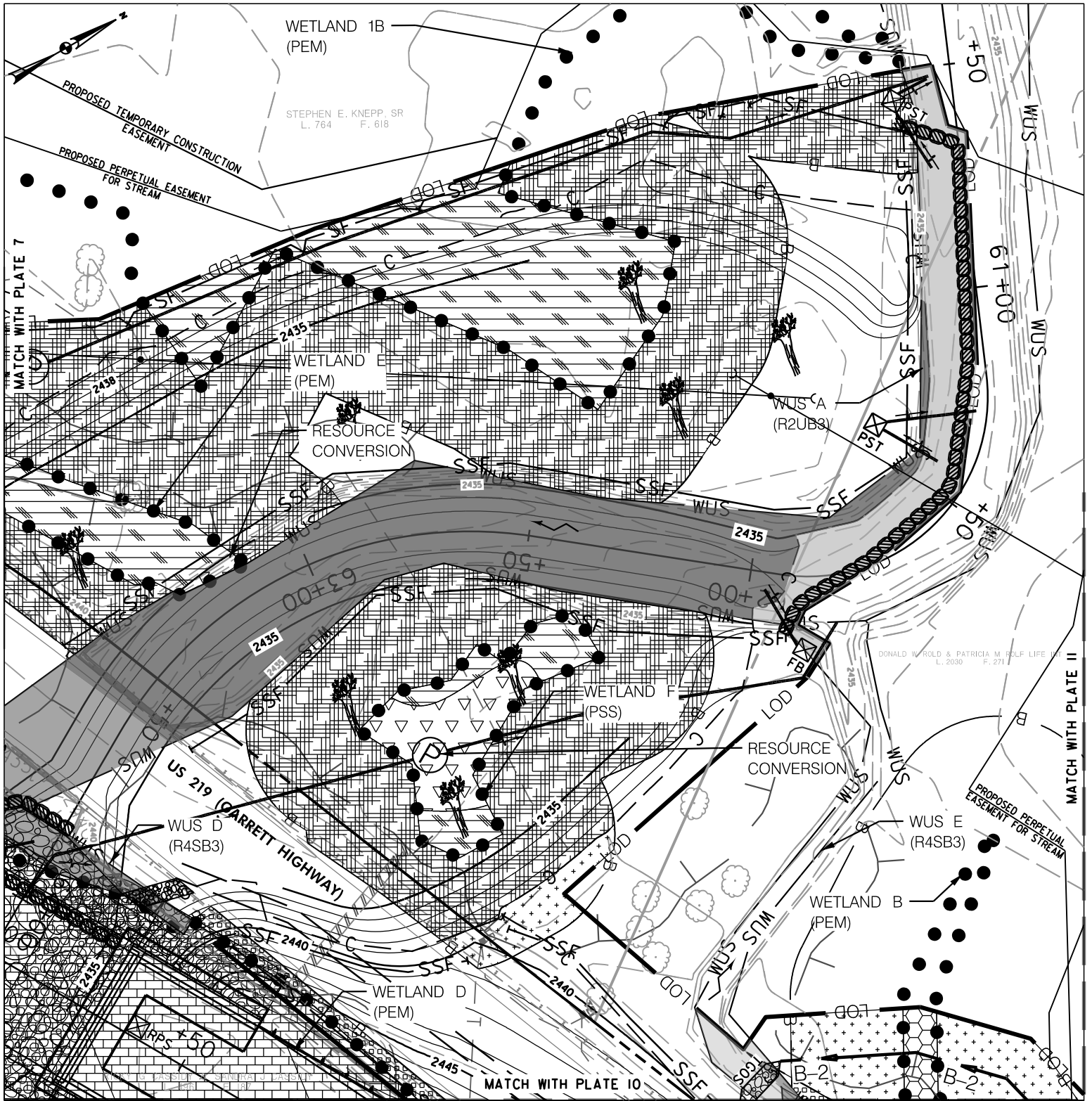
NOTE: ENTIRE SHEET VIEW IS WITHIN THE 100 YEAR FLOODPLAIN

WATERS OF THE U.S. IMPACTS

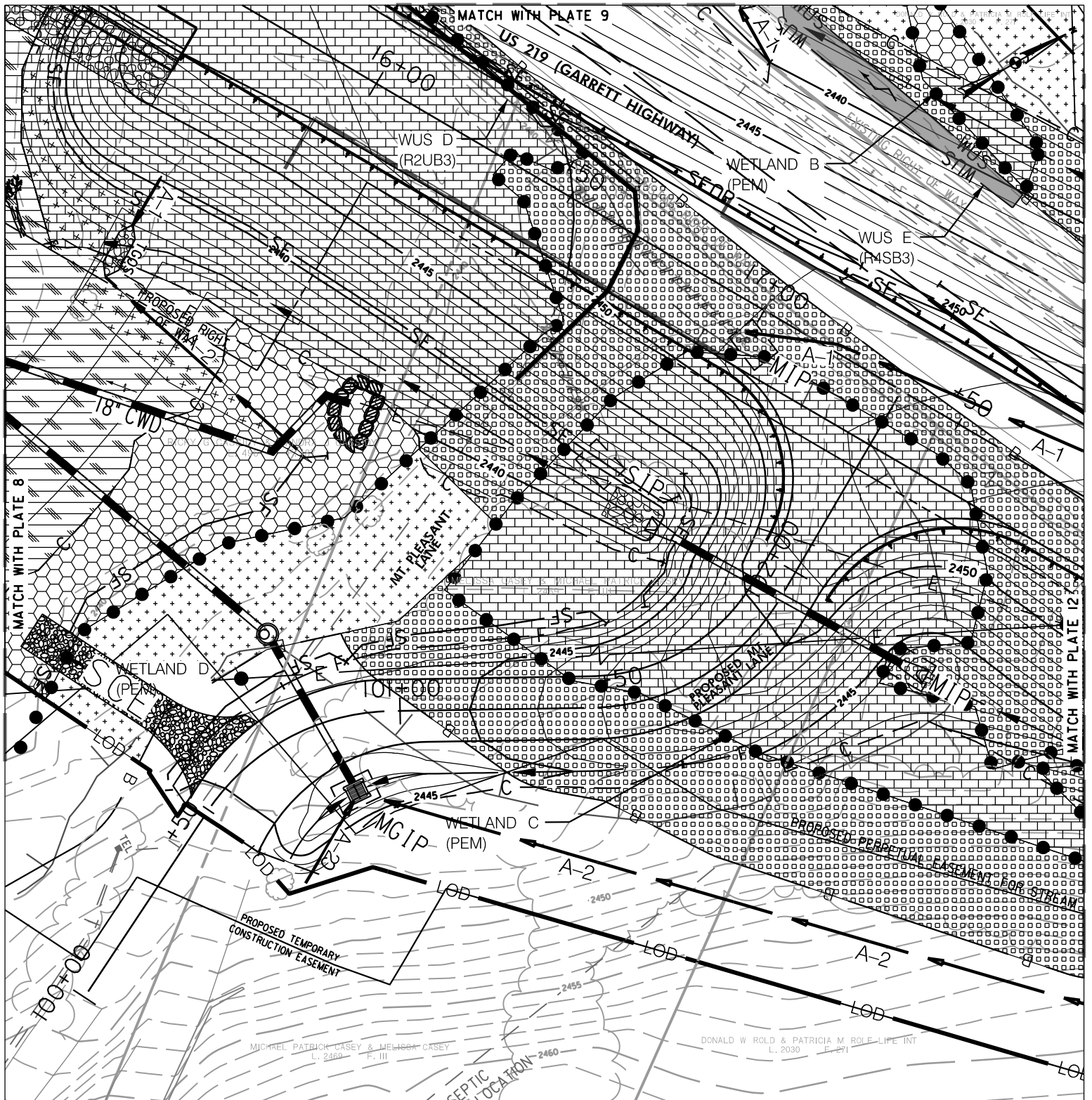
IMPACTS:	MITIGATION		BRIDGE REPLACEMENT	
	TEMPORARY	PERMANENT	TEMPORARY	PERMANENT
WETLAND	9,462 SF / 0.22 AC	4,504 SF / 0.10 AC	570 SF / 0.01 AC	816 SF / 0.02 AC
WETLAND BUFFER	8,465 SF / 0.19 AC	34 SF / 0.001 AC	99 SF / 0.002 AC	4 SF / 0.0001 AC
WATERWAY	2,094 SF / 0.05 AC / 90 LF	5,259 SF / 0.12 AC / 204 LF	NONE	273 SF / 0.01 AC / 12 LF
FLOODPLAIN IMPACT: 39,656 SF / 0.91 AC		838 SF / 0.02 AC		

US 219 BRIDGE 1102400 REPLACEMENT AND MITIGATION DESIGN
IMPACT PLATE 8





WATERS OF THE U.S. IMPACTS		BRIDGE REPLACEMENT		US 219 BRIDGE 1102400 REPLACEMENT AND MITIGATION DESIGN	
IMPACTS:	MITIGATION	TEMPORARY	PERMANENT	TEMPORARY	PERMANENT
WETLAND	3,815 SF / 0.09 AC 660 SF / 0.02 AC	152 SF / 0.003 AC	3,018 SF / 0.07 AC	IMPACT PLATE 9 	
WETLAND BUFFER	13,249 SF / 0.30 AC	1,238 SF / 0.03 AC	264 SF / 0.01 AC		
WATERWAY	1,459 SF / 0.03 AC / 136 LF	147 SF / 0.003 AC / 24 LF	994 SF / 0.02 AC / 76 LF		
FLOODPLAIN IMPACT: 19,932 SF / 0.46 AC		4,195 SF / 0.09 AC			
County : GARRETT COUNTY	Scale: 1" = 30'	Date: 12/2/2024	Drawn By: KS	Contract No. BCS 2012-03G	Page 11 of 20



WATERS OF THE U.S. IMPACTS

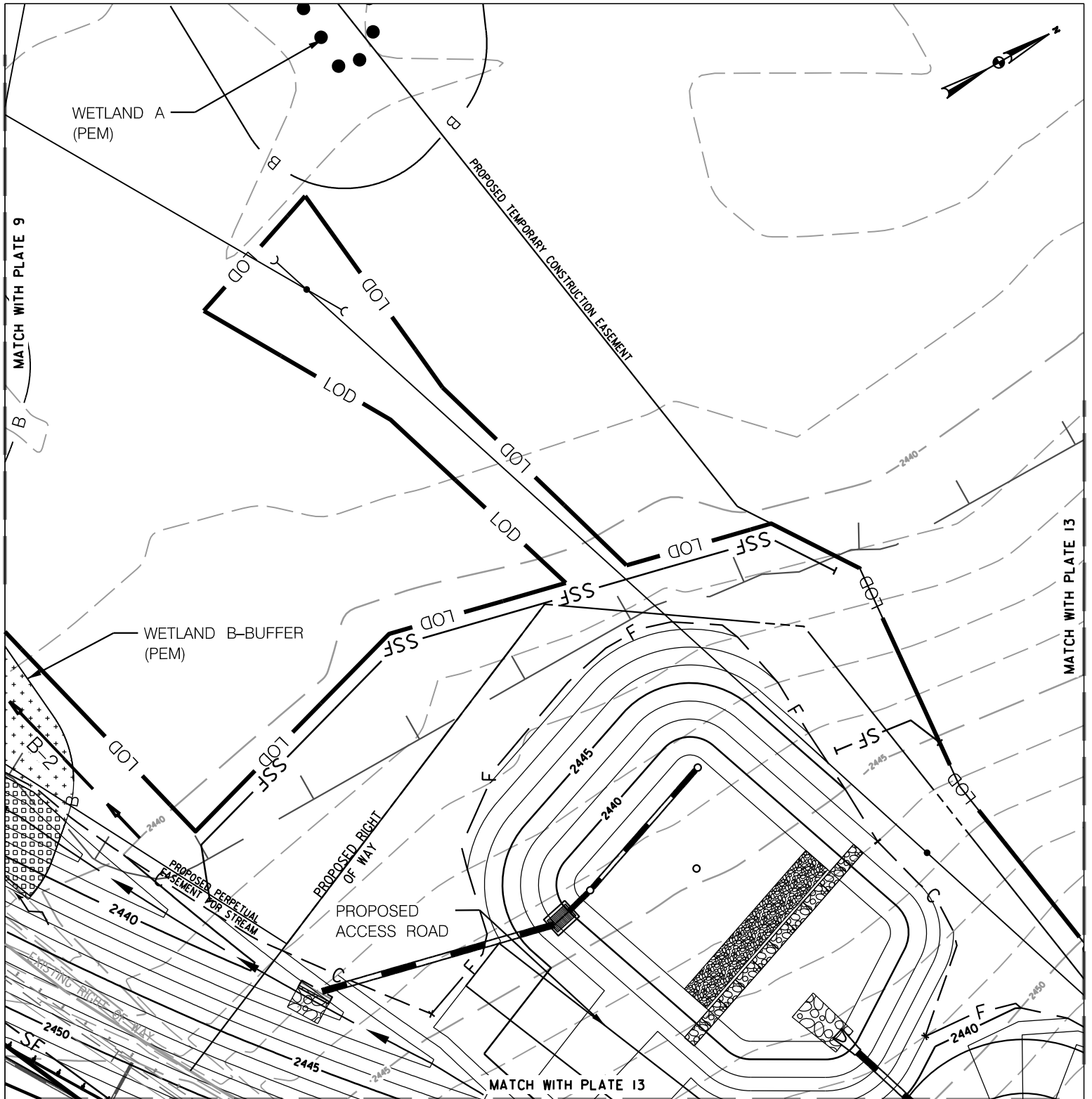
IMPACTS:	MITIGATION		BRIDGE REPLACEMENT	
	TEMPORARY	PERMANENT	TEMPORARY	PERMANENT
WETLAND	2,641 SF / 0.06 AC	NONE	3,037 SF / 0.07 AC	16,462 SF / 0.38 AC
WETLAND BUFFER	NONE	NONE	3,246 SF / 0.07 AC	10,404 SF / 0.24 AC
WATERWAY	NONE	NONE	14 SF / 0.0003 AC / 1 LF	344 SF / 0.01 AC / 68 LF

US 219 BRIDGE 1102400 REPLACEMENT AND MITIGATION DESIGN
IMPACT PLATE 10

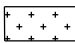
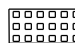


FLOODPLAIN IMPACT: 2,641 SF / 0.06 AC

25,399 SF / 0.58 AC

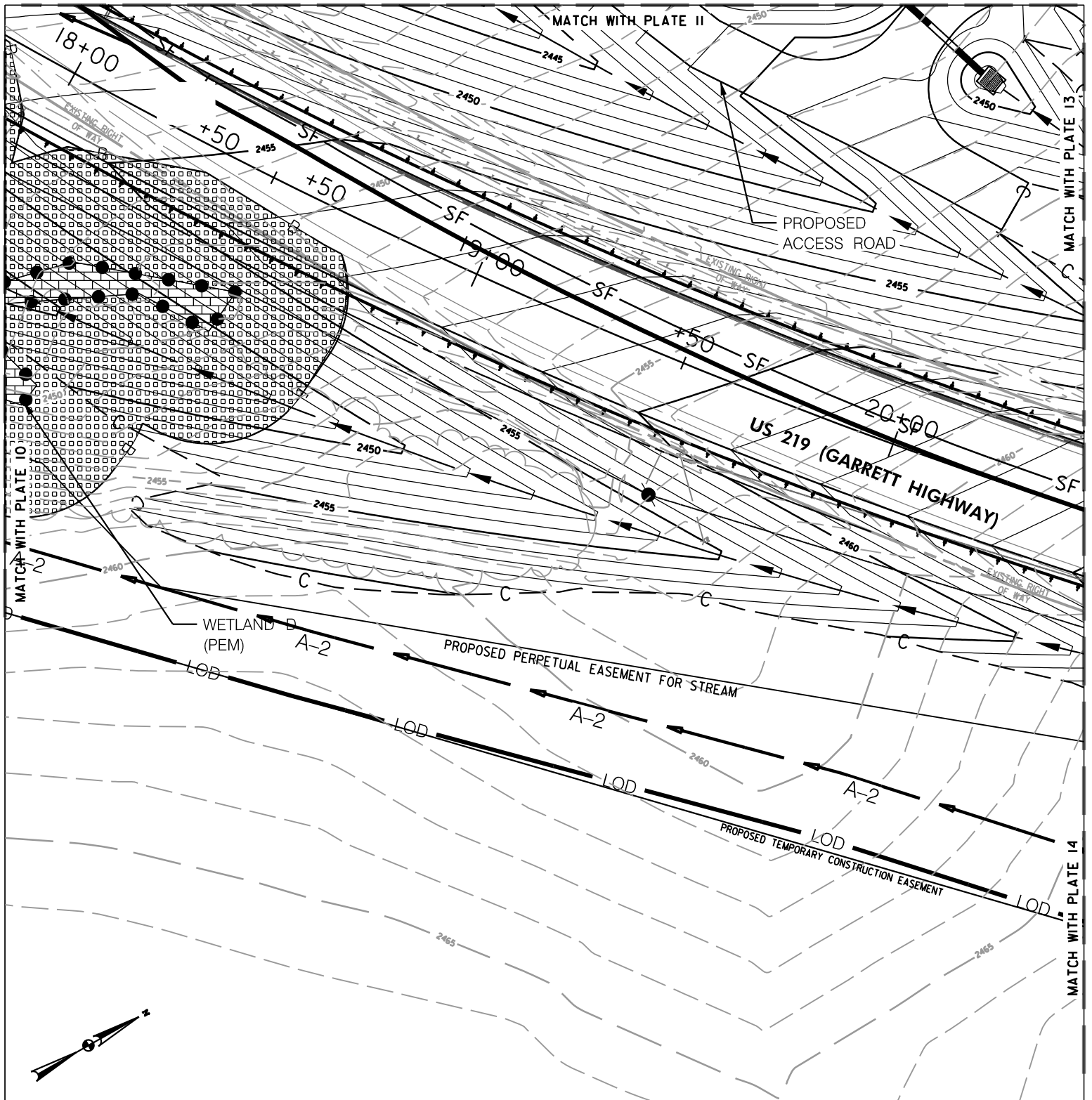


WATERS OF THE U.S. IMPACTS


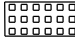
IMPACTS:	MITIGATION		BRIDGE REPLACEMENT	
	TEMPORARY	PERMANENT	TEMPORARY	PERMANENT
WETLAND	NONE	NONE	NONE	NONE
WETLAND BUFFER	NONE	NONE	 339 SF / 0.01 AC	 240 SF / 0.01 AC
WATERWAY	NONE	NONE	NONE	NONE
FLOODPLAIN IMPACT: NONE			5,190 SF / 0.12 AC	

US 219 BRIDGE 1102400 REPLACEMENT AND MITIGATION DESIGN
IMPACT PLATE 11





WATERS OF THE U.S. IMPACTS

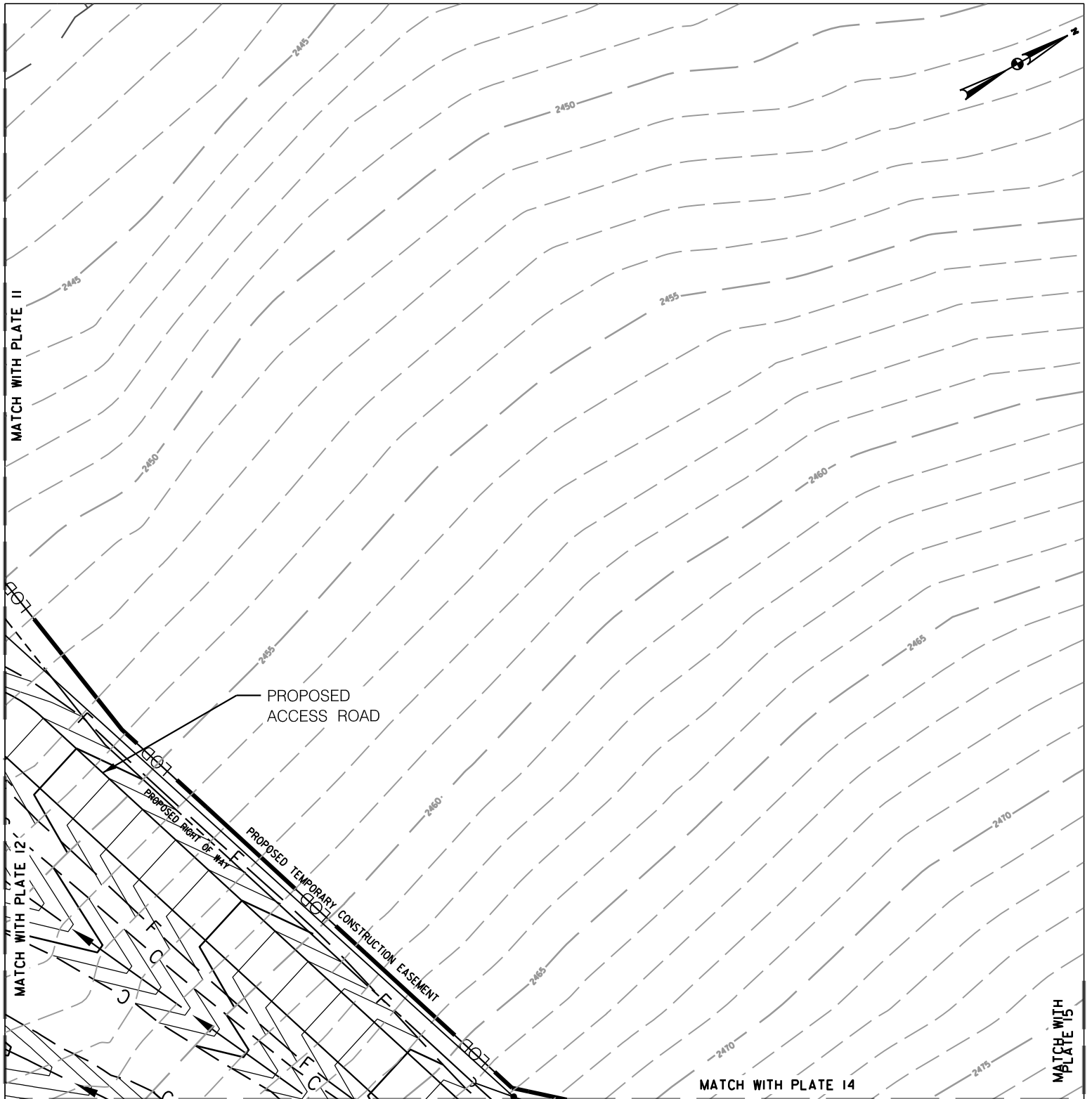
IMPACTS:	MITIGATION		BRIDGE REPLACEMENT	
	TEMPORARY	PERMANENT	TEMPORARY	PERMANENT
WETLAND	NONE	NONE	NONE	 376 SF / 0.01 AC
WETLAND BUFFER	NONE	NONE	NONE	 4,189 SF / 0.10 AC
WATERWAY	NONE	NONE	NONE	NONE

US 219 BRIDGE 1102400 REPLACEMENT AND MITIGATION DESIGN
IMPACT PLATE 12



FLOODPLAIN IMPACT: NONE

NONE

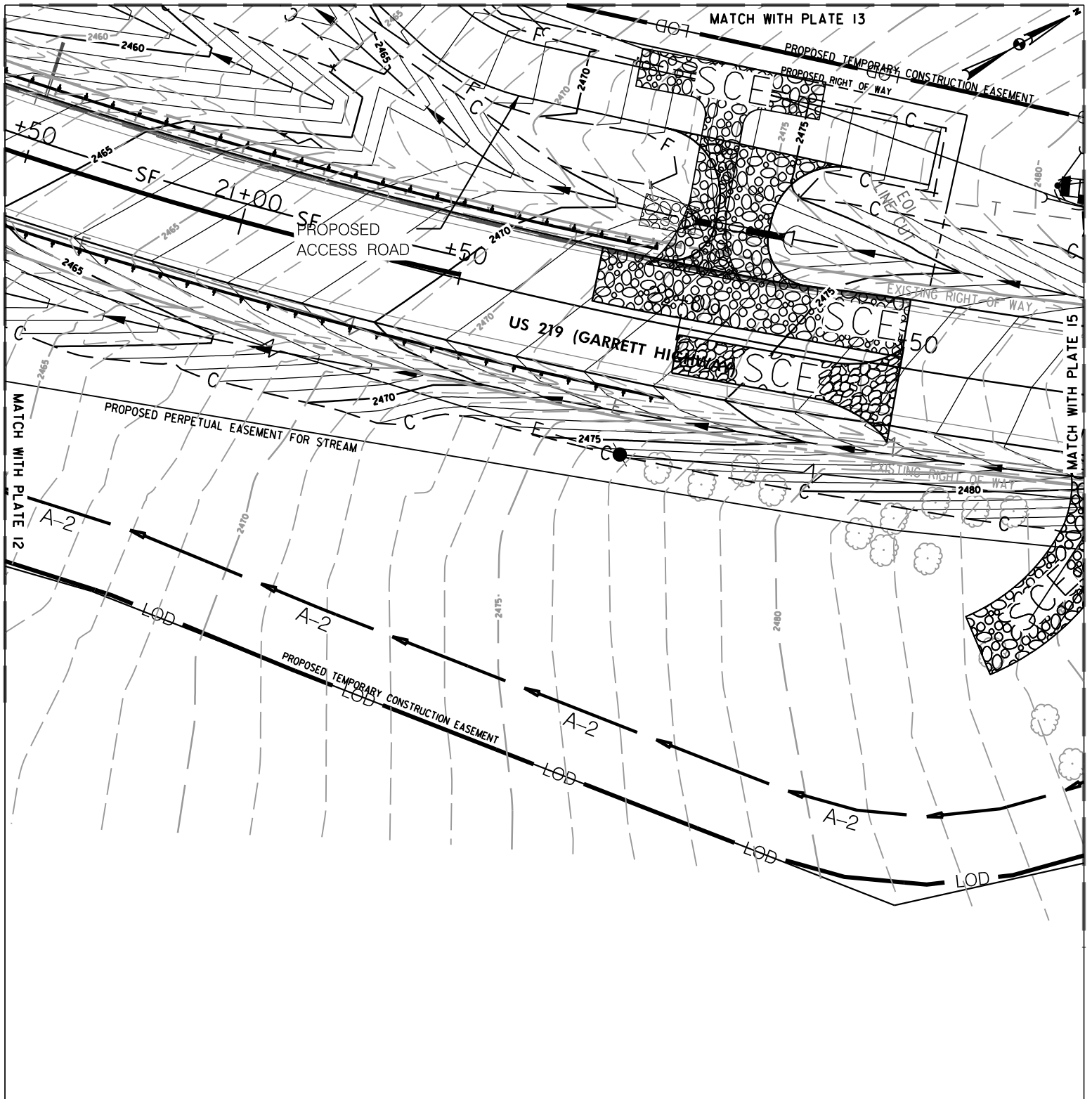


WATERS OF THE U.S. IMPACTS

US 219 BRIDGE 1102400 REPLACEMENT AND MITIGATION DESIGN
IMPACT PLATE 13

IMPACTS:	MITIGATION		BRIDGE REPLACEMENT	
	TEMPORARY	PERMANENT	TEMPORARY	PERMANENT
WETLAND	NONE	NONE	NONE	NONE
WETLAND BUFFER	NONE	NONE	NONE	NONE
WATERWAY	NONE	NONE	NONE	NONE
FLOODPLAIN IMPACT: NONE			NONE	





WATERS OF THE U.S. IMPACTS

IMPACTS:	MITIGATION		BRIDGE REPLACEMENT	
	TEMPORARY	PERMANENT	TEMPORARY	PERMANENT
WETLAND	NONE	NONE	NONE	NONE
WETLAND BUFFER	NONE	NONE	NONE	NONE
WATERWAY	NONE	NONE	NONE	NONE

US 219 BRIDGE 1102400 REPLACEMENT AND MITIGATION DESIGN
IMPACT PLATE 14



FLOODPLAIN IMPACT: NONE

NONE

County : GARRETT COUNTY

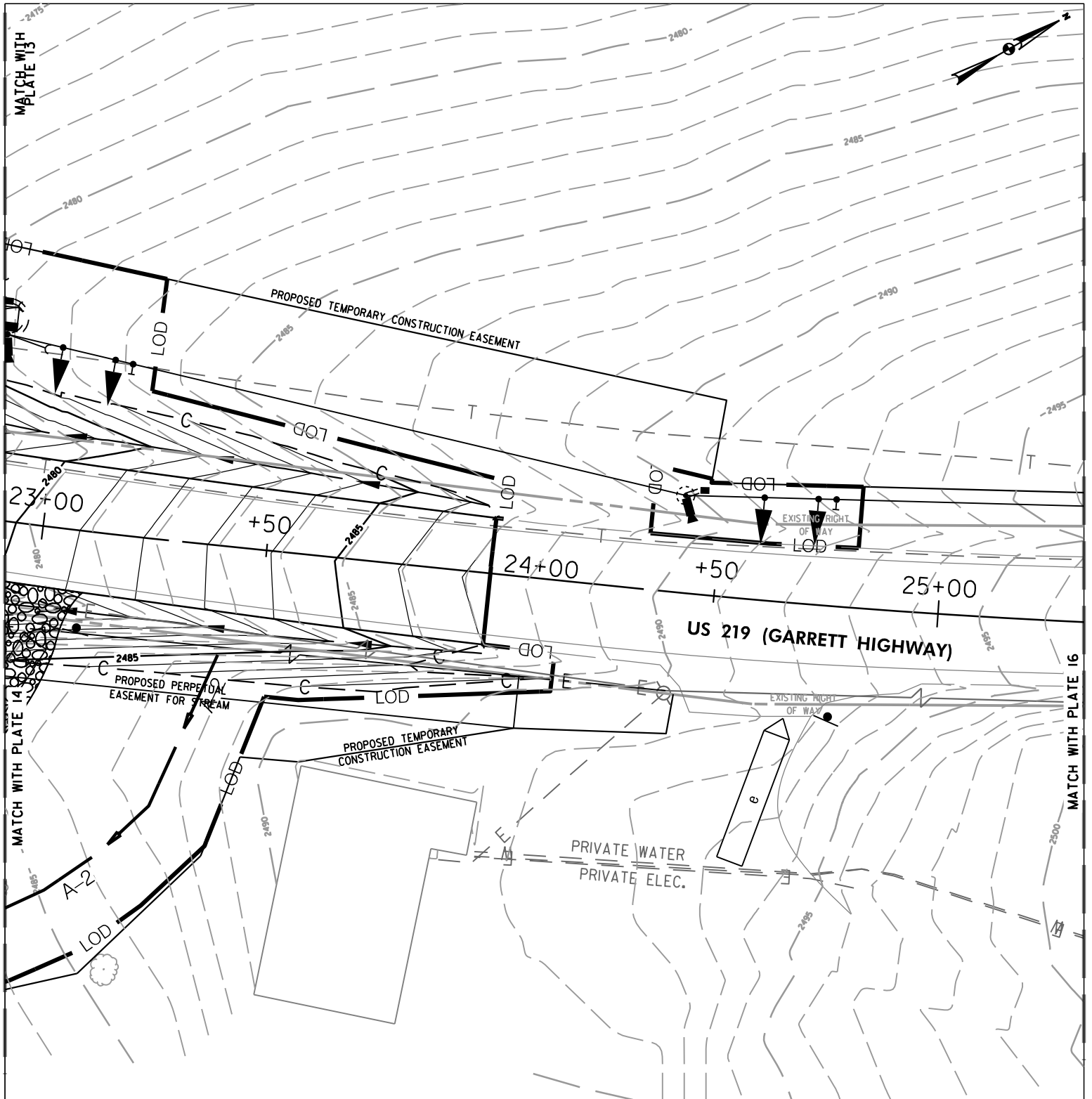
Scale: 1" = 30'

Date: 12/2/2024

Drawn By: KS

Contract No. BCS 2012-03G

Page 16 of 20



WATERS OF THE U.S. IMPACTS

IMPACTS:	MITIGATION		BRIDGE REPLACEMENT	
	TEMPORARY	PERMANENT	TEMPORARY	PERMANENT
WETLAND	NONE	NONE	NONE	NONE
WETLAND BUFFER	NONE	NONE	NONE	NONE
WATERWAY	NONE	NONE	NONE	NONE

US 219 BRIDGE 1102400 REPLACEMENT AND MITIGATION DESIGN
IMPACT PLATE 15



FLOODPLAIN IMPACT: NONE

NONE

County : GARRETT COUNTY

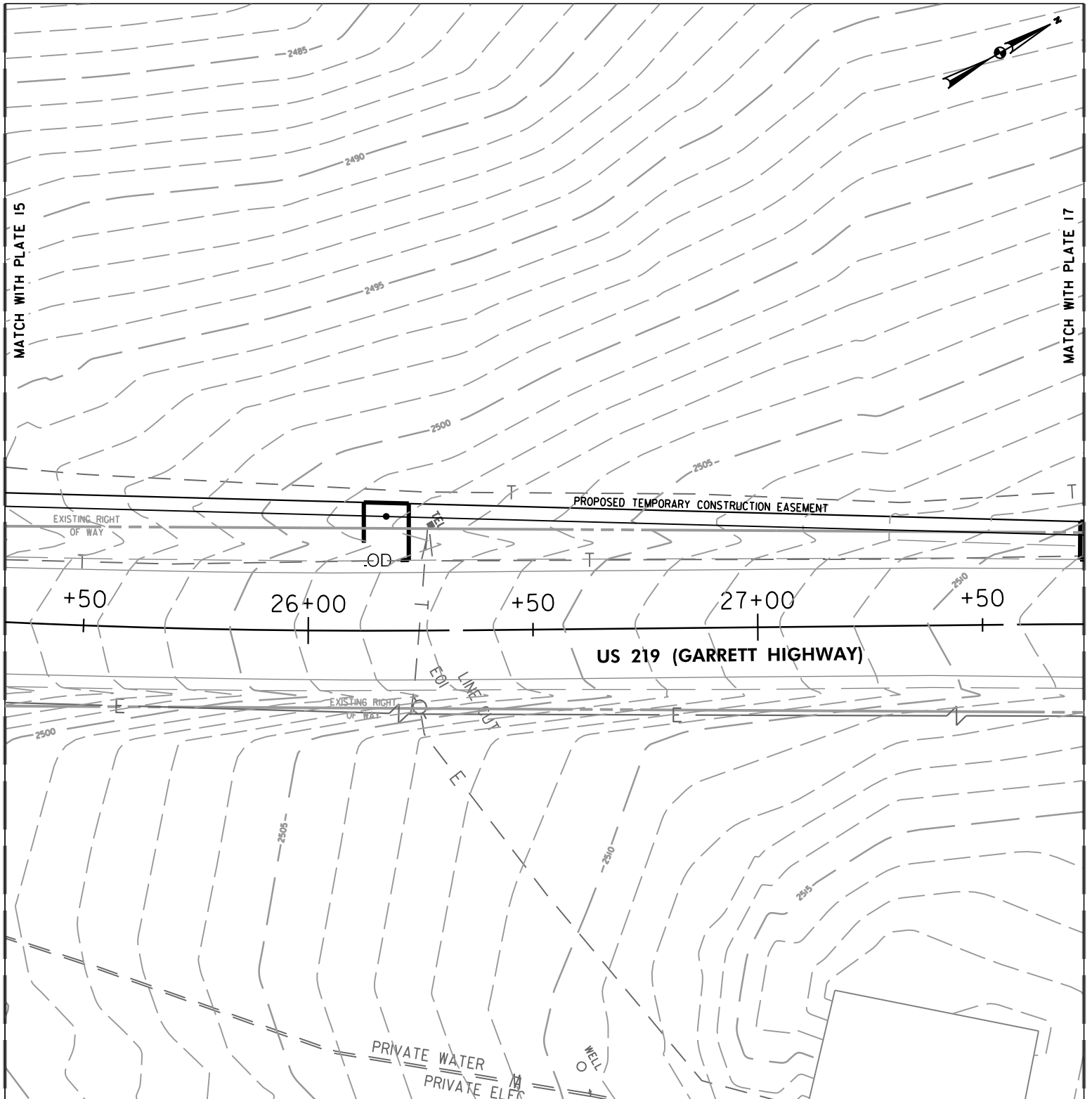
Scale: 1" = 30'

Date: 12/2/2024

Drawn By: KS

Contract No. BCS 2012-03G

Page 17 of 20

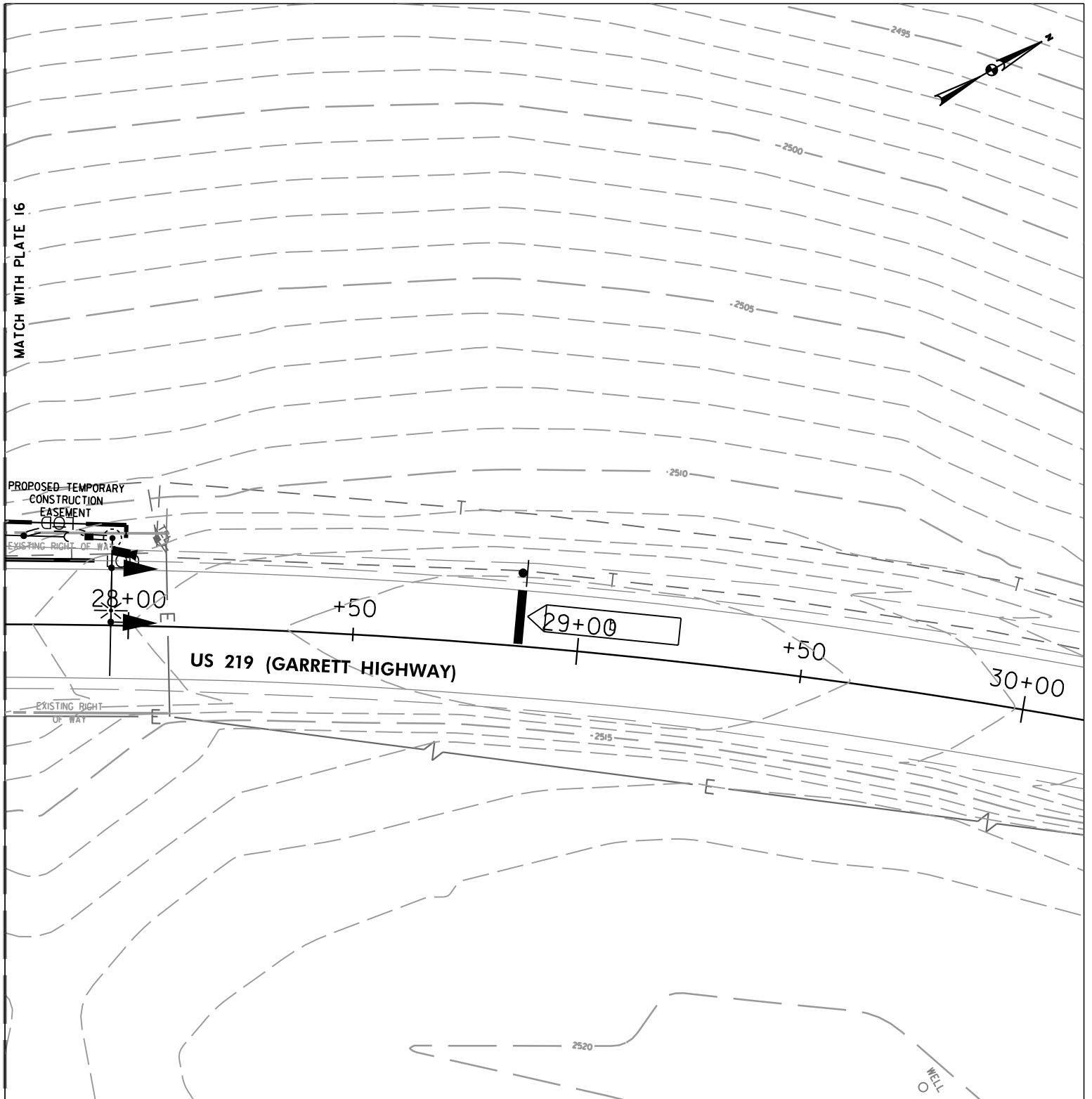


WATERS OF THE U.S. IMPACTS

IMPACTS:	MITIGATION		BRIDGE REPLACEMENT	
	TEMPORARY	PERMANENT	TEMPORARY	PERMANENT
WETLAND	NONE	NONE	NONE	NONE
WETLAND BUFFER	NONE	NONE	NONE	NONE
WATERWAY	NONE	NONE	NONE	NONE
FLOODPLAIN IMPACT: NONE			NONE	

US 219 BRIDGE 1102400 REPLACEMENT AND MITIGATION DESIGN
IMPACT PLATE 16





WATERS OF THE U.S. IMPACTS

IMPACTS:	MITIGATION		BRIDGE REPLACEMENT	
	TEMPORARY	PERMANENT	TEMPORARY	PERMANENT
WETLAND	NONE	NONE	NONE	NONE
WETLAND BUFFER	NONE	NONE	NONE	NONE
WATERWAY	NONE	NONE	NONE	NONE
FLOODPLAIN IMPACT: NONE			NONE	

US 219 BRIDGE 1102400 REPLACEMENT AND MITIGATION DESIGN
IMPACT PLATE 17



WATERS OF THE U.S. IMPACTS - BRIDGE REPLACEMENT				
	PERMANENT		TEMPORARY	
	SF	LF	SF	LF
INTERMITTENT				
WUS D	282	47	0	0
WUS E	369	68	161	25
PERENNIAL				
WUS A	3,762	155	0	0
WUS B	0	0	0	0
TOTAL	4,413	270	161	25

WATERS OF THE U.S. IMPACTS - MITIGATION				
	PERMANENT		TEMPORARY	
	SF	LF	SF	LF
INTERMITTENT				
WUS D	0	0	0	0
WUS E	0	0	35	9
PERENNIAL				
WUS A	9,240	371	3,518	217
WUS B	6,015	885	0	0
TOTAL	15,255	1,256	3,553	226

WETLANDS - BRIDGE REPLACEMENT		
	PERMANENT	TEMPORARY
	SF	SF
WETLANDS		
Wetland A (PEM)	0	0
Wetland B (PEM)	277	333
Wetland C (PEM)	8,479	0
Wetland D (PEM)	10,775	3,426
Wetland D (PSS)	0	0
Wetland E (PEM)	8,425	4,343
Wetland F (PSS)	0	0
Wetland G (PEM)	0	0
Wetland H (PEM)	0	0
Wetland 1A (PEM)	0	1,418
Wetland 1B (PEM)	0	3,131
TOTAL	27,956	12,651

WETLANDS - MITIGATION		
	PERMANENT	TEMPORARY
	SF	SF
WETLANDS		
Wetland A (PEM)	0	0
Wetland B (PEM)	0	0
Wetland C (PEM)	0	0
Wetland D (PEM)	466	8,811
Wetland D (PSS)	3,583	0
Wetland E (PEM)	38	1,051
Wetland F (PSS)	622	431
Wetland G (PEM)	0	0
Wetland H (PEM)	455	3,292
Wetland 1A (PEM)	0	0
Wetland 1B (PEM)	0	2,684
TOTAL	5,164	16,269

WETLAND BUFFERS - BRIDGE REPLACEMENT		
	PERMANENT	TEMPORARY
	SF	SF
WETLAND BUFFERS		
Wetland A Buffer	0	0
Wetland B Buffer	804	1,921
Wetland C Buffer	14,047	0
Wetland D Buffer	452	2,786
Wetland E Buffer	12,504	6,330
Wetland F Buffer	0	352
Wetland G Buffer	0	0
Wetland H Buffer	0	0
Wetland 1A Buffer	0	804
Wetland 1B Buffer	0	0
TOTAL	27,807	12,193

WETLAND BUFFERS - MITIGATION		
	PERMANENT	TEMPORARY
	SF	SF
WETLAND BUFFERS		
Wetland A Buffer	0	0
Wetland B Buffer	0	0
Wetland C Buffer	0	0
Wetland D Buffer	34	2,899
Wetland E Buffer	0	1,405
Wetland F Buffer	0	4,544
Wetland G Buffer	0	1,314
Wetland H Buffer	0	5,566
Wetland 1A Buffer	0	0
Wetland 1B Buffer	0	8,150
TOTAL	34	23,878

100 YR FLOODPLAIN IMPACTS - BRIDGE REPLACEMENT		
	PERMANENT	
	SF	AC
100 YR FLOODPLAIN	44,147	1.01
TOTAL	44,147	1.01

100 YR FLOODPLAIN IMPACTS - MITIGATION		
	PERMANENT	
	SF	AC
100 YR FLOODPLAIN	212,779	4.88
TOTAL	212,779	4.88

Note: Roadway and mitigation impacts have been defined and calculated using the proposed cut/fill line for the roadway/bridge replacement portion of the project.

US 219 BRIDGE 1102400 REPLACEMENT AND MITIGATION DESIGN IMPACT TABLES

