

Centennial Park and South Meadow Court Pond Project

Howard County Department of Public Works
Storm Water Management Division



MDE Public Hearing

July 31, 2023

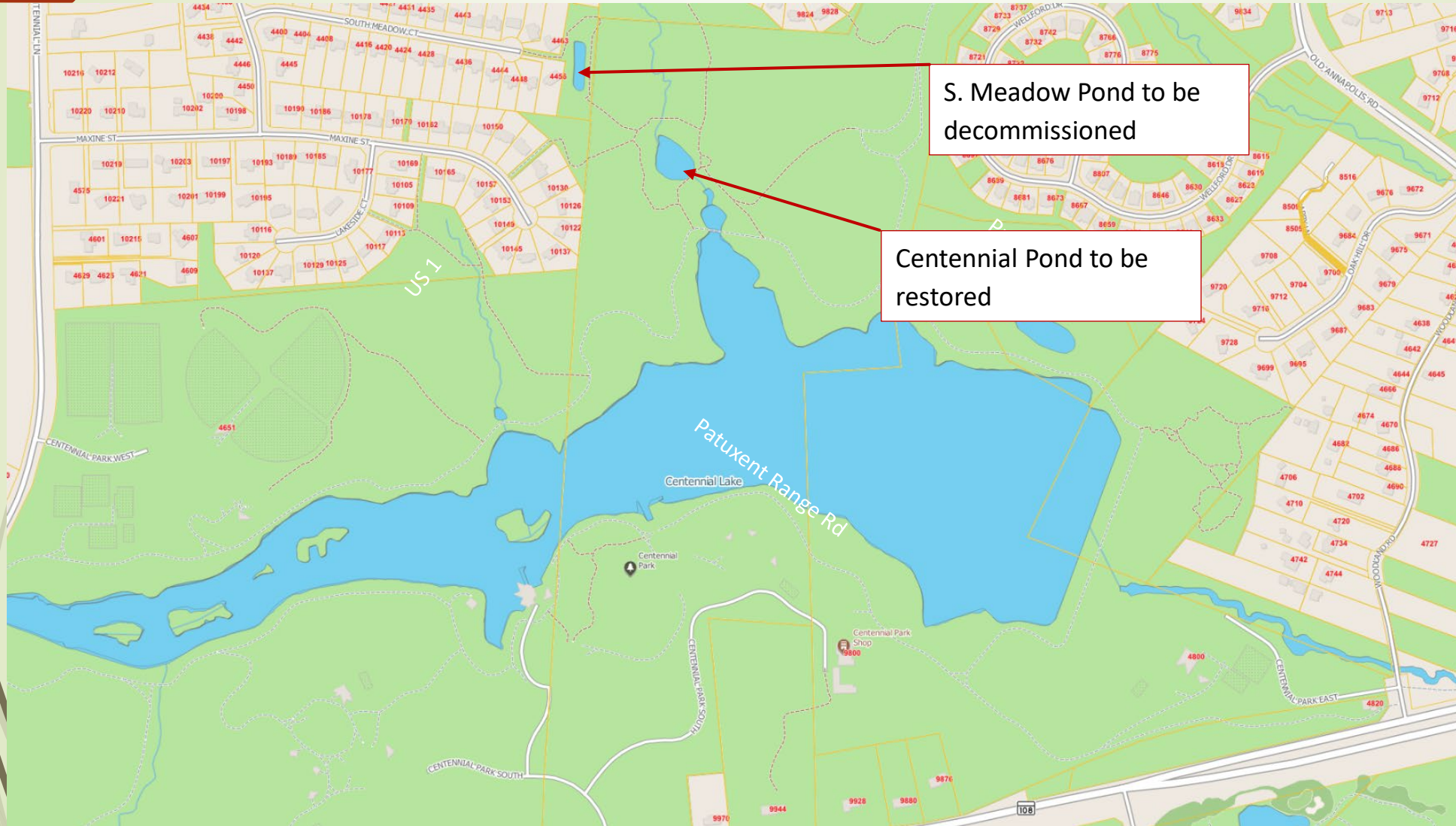
Project Team



- **Howard County Department of Public Works, Stormwater Management Division**
 - Mark Richmond, P.E.
 - Avinash Dewani, P.E.

- **Straughan Environmental/Stantec JV**
 - Serena Stafford, P.E.
 - Michael Blose, P.E.

Location Map



S. Meadow Pond to be decommissioned

Centennial Pond to be restored

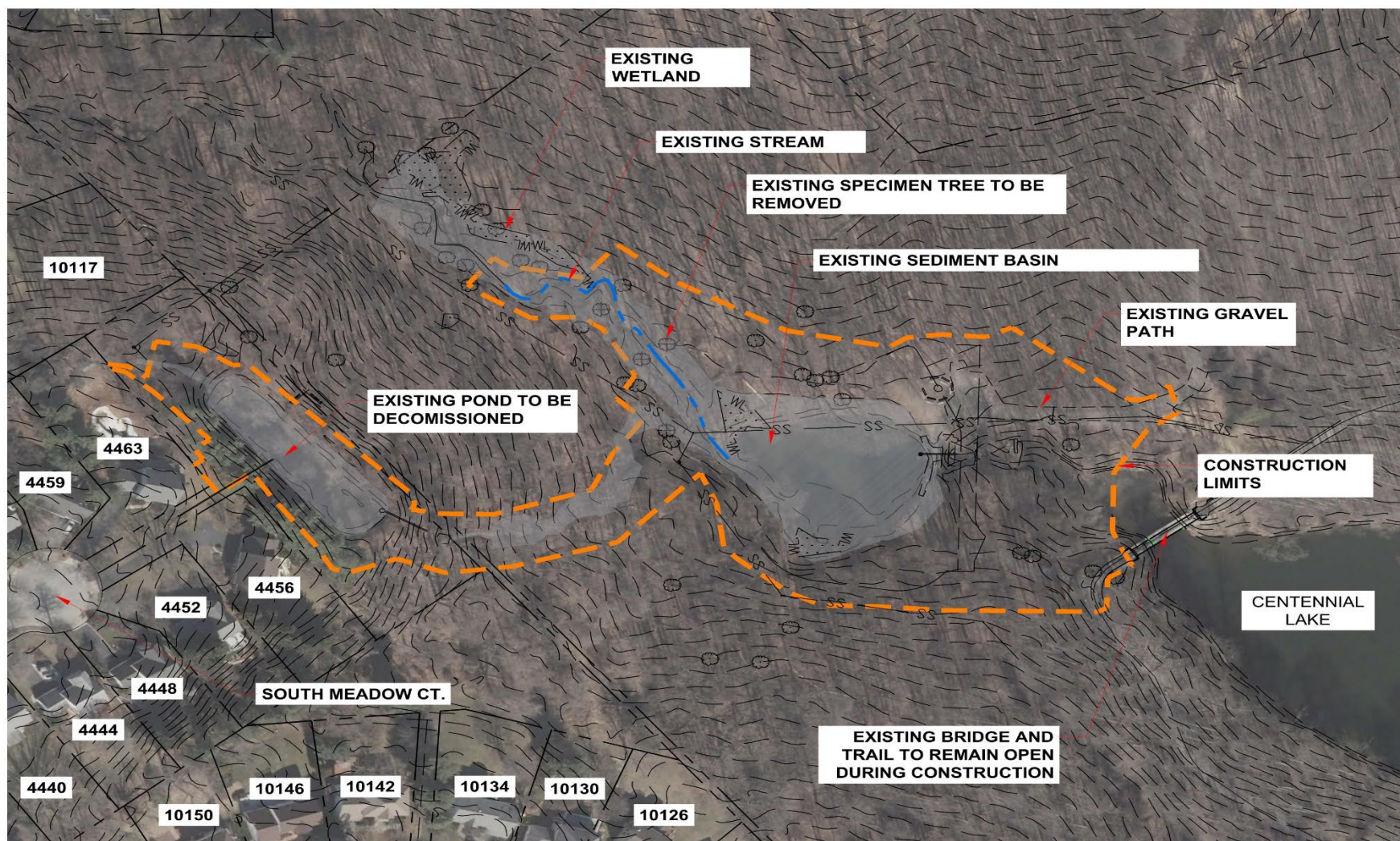


Project Overview

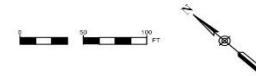


- **S. Meadow Pond:** The existing pond filled with sediments will be decommissioned and the inflows to the pond are to be repaired and the outfall of the pond will be stabilized.
- **Centennial Pond:** The project will repair much needed Centennial sediment basin and bring the pond into compliance with current Maryland Department of the Environment (MDE) standards and regulations.

Existing Site Conditions Plan



EXISTING CONDITIONS



LEGEND

	EXISTING TREE
	SPECIMEN TREE REMOVAL
	CONSTRUCTION LIMITS
	WETLAND BOUNDARY
	SANITARY SEWER
	EX. MAJOR CONTOUR
	EX. MINOR CONTOUR
	PROPERTY BOUNDARY
	100-YEAR FLOODPLAIN
	EXISTING PATH
	EXISTING STREAM

NOTES:

1. FOUR SPECIMEN TREES TO BE REMOVED.
2. ONLY TREES GREATER THAN 12 INCHES IN DIAMETER ARE SHOWN ON THE PLAN.

May 18, 2022

DEPARTMENT OF PUBLIC WORKS
HOWARD COUNTY, MARYLAND

CHIEF, STORMWATER MANAGEMENT DIVISION DATE

PREPARED BY:

Stantec **STRAUGHAN ENVIRONMENTAL**
a joint venture

6110 FROST PLACE 10245 OLD COLUMBIA ROAD
LAUREL, MD 20707 COLUMBIA, MD 21046
TEL: 301.982.2800 TEL: 301.562.9200
FAX: 301.220.2619 FAX: 301.362.9245
www.stantec.com info@straughanenvironmental.com

HOWARD COUNTY
MARYLAND

STORMWATER MANAGEMENT DIVISION
BUREAU OF ENVIRONMENTAL SERVICES
HOWARD COUNTY GOVERNMENT
9801 BROKEN LAND PARKWAY
COLUMBIA, MD 21046
(410) 313-6444

BY	NO.	REVISIONS	DATE

ADVERTISED DATE 04/XX/22

CONTRACT NO. D-1159

SCALE 1" = 50'

DESIGNED BY AS/CB

DRAWN BY AS/CB

CHECKED BY SS

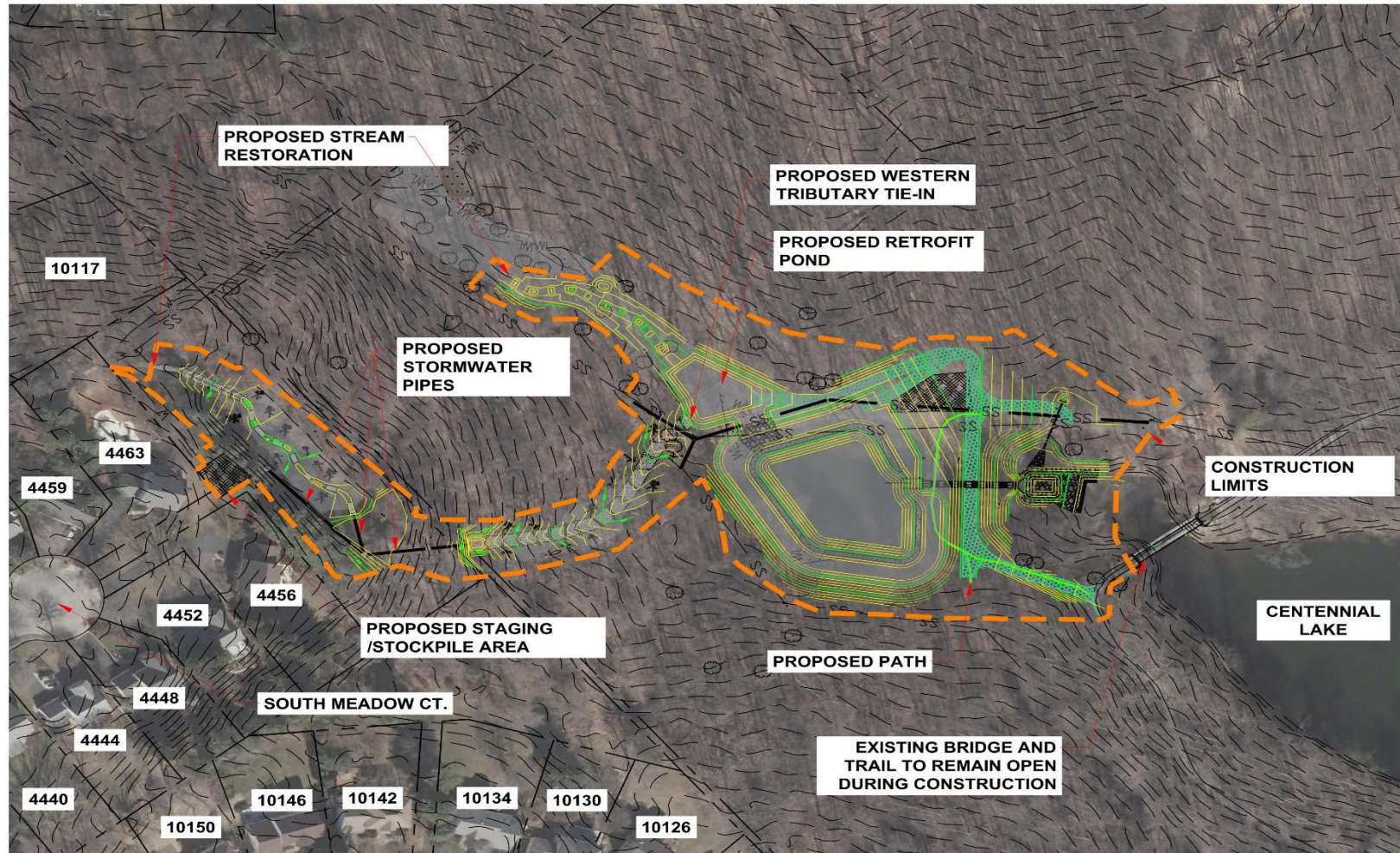
DATE: 4/XX/22 SHEET NO. 1 OF 2

SOUTH MEADOW COURT POND
RETROFIT AND STREAM
RESTORATION PROJECT
CAPITAL PROJECT D-1159

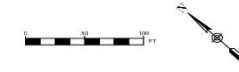
PUBLIC MEETING EXHIBIT

ELECTION DISTRICT NO. 02, HOWARD CO., MD TAX MAP 34 GRID NO. 0060

Proposed Conditions Plan



PROPOSED CONDITIONS



LEGEND

- EXISTING TREE
- SPECIMEN TREE REMOVAL
- CONSTRUCTION LIMITS
- WL WETLAND BOUNDARY
- SS EX. SANITARY SEWER
- SS PR. SANITARY SEWER
- PR. MAJOR CONTOUR
- PR. MINOR CONTOUR
- PROPERTY BOUNDARY
- FLOODPLAIN
- EXISTING PATH
- PR. ACCESS ROAD

NOTES:

1. FOUR SPECIMEN TREES TO BE REMOVED.
2. ONLY TREES GREATER THAN 12 INCHES IN DIAMETER ARE SHOWN ON THE PLAN.
3. UPLAND TREE ZONE WILL HAVE 256 SHRUBS AND 144 TREES
4. STREAMBANK RIPARIAN FOREST ZONE WILL HAVE 183 SHRUBS AND TREES

May 18, 2022

DEPARTMENT OF PUBLIC WORKS
HOWARD COUNTY, MARYLAND
CHIEF, STORMWATER MANAGEMENT DIVISION

PREPARED BY:
Stantec / **STRAUGHAN ENVIRONMENTAL**
6110 FROST PLACE
LAUREL, MD 20707
TEL: 301-982-2800
FAX: 301-220-2819
www.stantec.com

HOWARD COUNTY
MARYLAND
STORMWATER MANAGEMENT DIVISION
BUREAU OF ENVIRONMENTAL SERVICES
HOWARD COUNTY GOVERNMENT
9801 BROKEN LAND PARKWAY
COLUMBIA, MD 21046
(410) 313-6444

BY	NO.	REVISIONS	DATE

ADVERTISED DATE 04/08/22
CONTRACT NO. D-1159
SCALE 1" = 50'
DESIGNED BY AS/CB
DRAWN BY AS/CB
CHECKED BY SS
DATE: 4/XX/22 SHEET NO. 2 OF 2

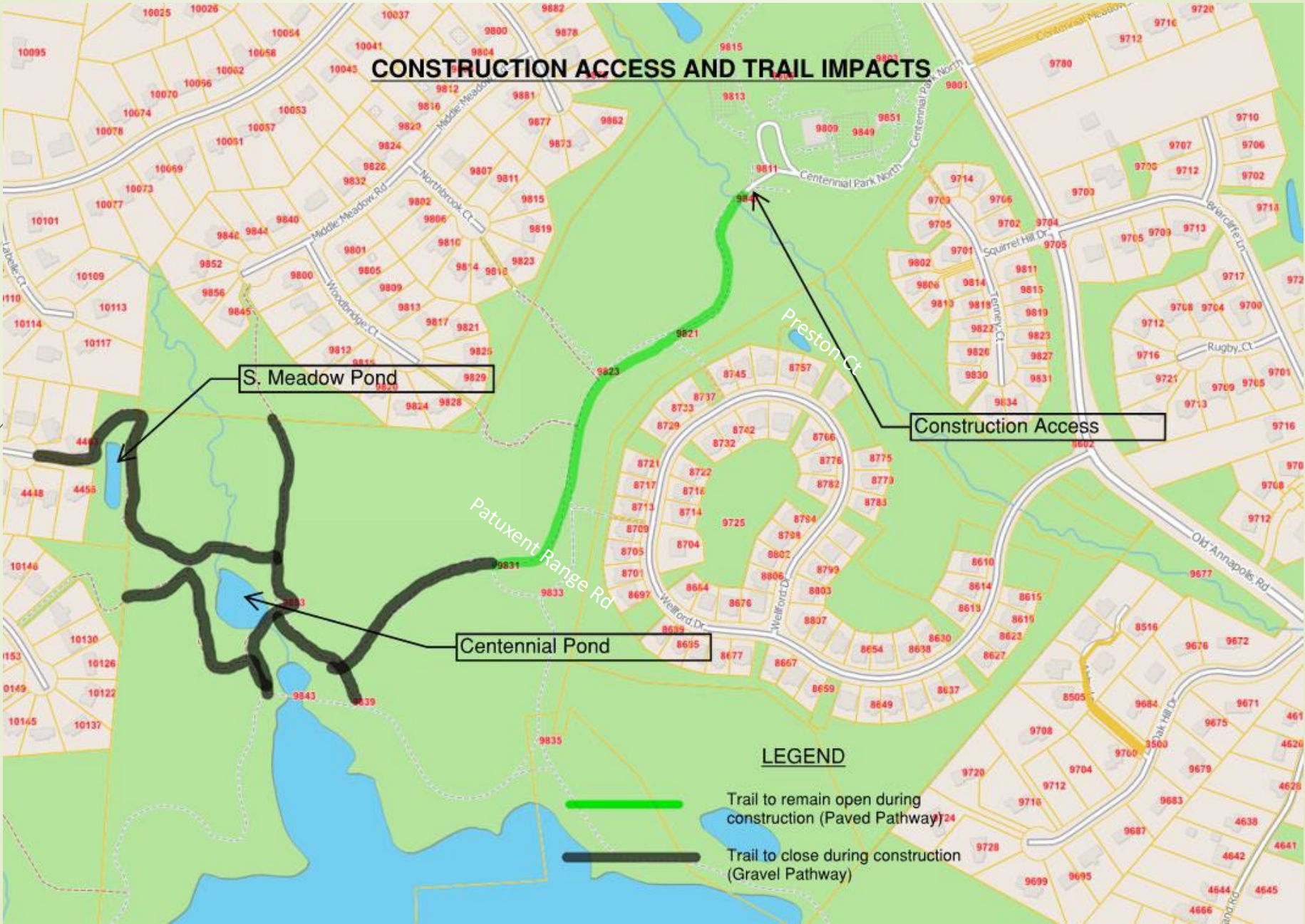
SOUTH MEADOW COURT POND
RETROFIT AND STREAM
RESTORATION PROJECT
CAPITAL PROJECT D-1159
PUBLIC MEETING EXHIBIT
ELECTION DISTRICT NO. 02, HOWARD CO. MD TAX MAP 34 GRID NO. 0060



Project Goals

- The SWM pond will be replaced with a combination of step pools and new storm drains to safely convey water from S. Meadow Ct. to the Centennial pond.
- The Centennial pond will be sized to both treat the impervious surface to the SWM pond and the additional impervious surfaces flowing to the sediment basin.
- The project will stabilize approximately 200 feet of the perennial main stem into the new pond.
- Decommission existing failed infiltration pond at S. Meadow Ct.
- Retrofit existing Centennial (sediment) pond to provide water quality treatment.
- Restore inflow streams to prevent erosion.
- Minimize the impact on trees, especially near private homes.
- Minimize impacting the existing sewer around the sediment pond.
- Minimize impacts on visitors to Centennial Park.

Construction Access





Project Landscape Impacts

- Approximately 21 Specimen trees (2 are dead) are expected to be removed to achieve the project goals.
- Approximately 2.4 Acres of wooded area will be impacted.
- 3" - 42 trees are expected to be planted.
- Additional 169 trees of 3/4" -2" diameter will be planted.
- County is currently reviewing the plans with the design consultant to look for ways to minimize the tree/wood area impacts while still achieving the project goals.



Project Construction Schedule

- **Construction is anticipated to start Spring 2024**
 - Approximately 12 months construction duration
- **Construction Notification**
 - Signs will be posted, and the construction notification will be issued we are closer to construction.
- **Construction Hours**
 - Monday to Friday, 7AM to 4:00 PM
- **Safety**
 - Construction site will be fenced with orange construction safety fence
- **Traffic**
 - The gravel trails around the Limit of Disturbances (LOD) are expected to be closed for the duration of the construction for public safety.
 - All the paved trails to remain open (may be closed for short duration to move heavy equipment to the construction site for public safety).



Next Steps



- **Finalize the design to minimize the Tree impacts**
- **Obtain all necessary permits**
- **Advertise the project for bids**
- **Notify nearby property owners of construction start date**
- **Preconstruction meeting with contractor**

Centennial Park and South Meadow Court Pond Project

QUESTIONS?

Mark Richmond, P.E.

msrichmond@howardcountymd.gov 410-313-6413

Avinash Dewani, P.E.

adewani@howardcountymd.gov 410-313-6417

