

**TOTAL IMPACTS**

	TEMPORARY	PERMANENT
PFO WETLAND	SF	6,939 SF
PSS WETLAND	SF	SF
PEM WETLAND	SF	SF
PFO/PEM WETLAND	SF	2,386 SF
PERENNIAL WUS	239 LF/1,032 SF	176 LF/1,130 SF
INTERMITTENT WUS	410 LF/2,985 SF	1,121 LF/5,896 SF
EPHEMERAL WUS	LF/SF	LF/SF
WETLAND BUFFER	SF	20,382 SF
100-YEAR FLOODPLAIN	588 SF	38,803 SF

**WETLAND IMPACT KEY SHEET**

I-95 ETL NORTHBOUND EXTENSION  
 MD 152 TO MD 24  
 JOHN F. KENNEDY MEMORIAL HIGHWAY  
 HARFORD COUNTY, MARYLAND



**MARYLAND  
 TRANSPORTATION AUTHORITY**

SCALE: 1"=700'


CONTRACT NO.: KH3010-0000

DATE: OCTOBER 2020

PLATE 1 OF 19

## LEGEND

LIMIT OF DISTURBANCE	
PARKLAND BOUNDARY	
CRITICAL AREA BOUNDARY	
100-YEAR FLOODPLAIN	
WUS BOUNDARY	
WETLAND BOUNDARY	
WETLAND BUFFER BOUNDARY	
WUS IMPACT TEMPORARY	
WUS IMPACT PERMANENT	
WETLAND IMPACT TEMPORARY	
WETLAND IMPACT PERMANENT	
WETLAND BUFFER IMPACT TEMPORARY	
WETLAND BUFFER IMPACT PERMANENT	

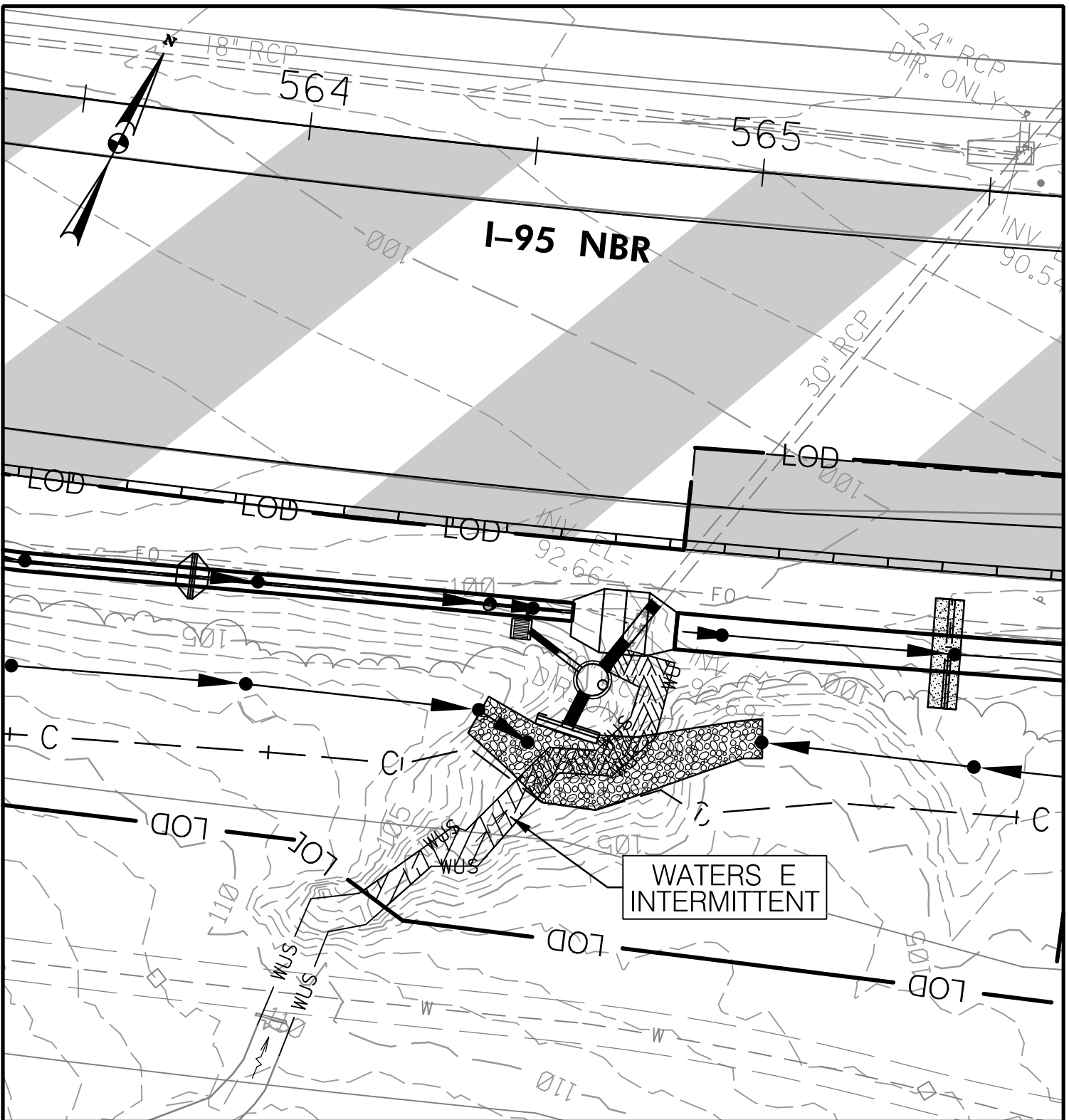
<b>WETLAND IMPACT LEGEND</b>	
I-95 ETL NORTHBOUND EXTENSION MD 152 TO MD 24 JOHN F. KENNEDY MEMORIAL HIGHWAY HARFORD COUNTY, MARYLAND	
 Maryland Transportation Authority	<b>MARYLAND                  TRANSPORTATION AUTHORITY</b>
SCALE: <u>NONE</u>	CONTRACT NO.: <u>KH3010-0000</u>
DATE: <u>OCTOBER 2020</u>	PLATE <u>2</u> OF <u>19</u>

**KH-3010 I-95 ETL Northbound Extension MD 152 to MD 24 Wetland Impact Summary Table**

Plate/Plan Sheet No.	Resource ID	PEM Wetland		PSS Wetland		PFO Wetland		PFO/PEM Wetland		25-foot Wetland Buffer	
		Temporary	Permanent	Temporary	Permanent	Temporary	Permanent	Temporary	Permanent	Temporary	Permanent
		SF	SF	SF	SF	SF	SF	SF	SF	SF	SF
PLATE 7	WETLAND H	0	0	0	0	0	0	0	2,386	0	5,628
PLATE 9	WETLAND L	0	0	0	0	0	0	0	0	0	875
PLATE 17	WETLAND S	0	0	0	0	0	0	0	0	0	1,111
PLATE 18	WETLAND S	0	0	0	0	0	900	0	0	0	3,835
PLATE 18	WETLAND X	0	0	0	0	0	857	0	0	0	2,828
PLATE 19	WETLAND X	0	0	0	0	0	5,182	0	0	0	6,105
<b>Total</b>		<b>0</b>	<b>0</b>	<b>0</b>	<b>0</b>	<b>0</b>	<b>6,939</b>	<b>0</b>	<b>2,386</b>	<b>0</b>	<b>20,382</b>

**KH-3010 I-95 ETL Northbound Extension MD 152 to MD 24 WUS Impact Summary Table**

Plate/Plan Sheet No.	Resource ID	Perennial WUS				Intermittent WUS				Ephemeral WUS				100-Year Floodplain	
		Temporary		Permanent		Temporary		Permanent		Temporary		Permanent		Temporary	Permanent
		LF	SF	LF	SF	LF	SF	LF	SF	LF	SF	LF	SF	SF	SF
PLATE 3	WATERS E	0	0	0	0	42	263	53	339	0	0	0	0	0	0
PLATE 4	WATERS F	101	342	0	0	0	0	0	0	0	0	0	0	0	0
PLATE 5	WATERS F	56	127	0	0	0	0	0	0	0	0	0	0	0	0
PLATE 5	WATERS G	21	170	51	355	0	0	0	0	0	0	0	0	0	0
PLATE 6	WATERS I	0	0	0	0	0	0	111	423	0	0	0	0	0	0
PLATE 6	WATERS J	22	96	53	183	0	0	0	0	0	0	0	0	0	0
PLATE 8	WATERS K	0	0	0	0	16	82	42	402	0	0	0	0	0	0
PLATE 10	WATERS M	39	297	72	592	0	0	0	0	0	0	0	0	0	0
PLATE 11	WATERS N	0	0	0	0	25	174	48	280	0	0	0	0	0	0
PLATE 12	WATERS V	0	0	0	0	35	88	131	492	0	0	0	0	588	12,826
PLATE 13	WATERS V	0	0	0	0	0	0	214	1,173	0	0	0	0	0	12,481
PLATE 14	WATERS V	0	0	0	0	0	0	213	1,035	0	0	0	0	0	10,607
PLATE 15	WATERS V	0	0	0	0	0	0	213	1,110	0	0	0	0	0	2,889
PLATE 16	WATERS V	0	0	0	0	127	1,185	86	588	0	0	0	0	0	0
PLATE 17	WATERS V	0	0	0	0	165	1,193	10	54	0	0	0	0	0	0
<b>Total</b>		<b>239</b>	<b>1,032</b>	<b>176</b>	<b>1,130</b>	<b>410</b>	<b>2,985</b>	<b>1,121</b>	<b>5,896</b>	<b>0</b>	<b>0</b>	<b>0</b>	<b>0</b>	<b>588</b>	<b>38,803</b>



**IMPACTS ON THIS PLATE**

	TEMPORARY	PERMANENT
PFO WETLAND	SF	SF
PSS WETLAND	SF	SF
PEM WETLAND	SF	SF
PFO/PEM WETLAND	SF	SF
PERENNIAL WUS	LF/SF	LF/SF
INTERMITTENT WUS	42 LF/263 SF	53 LF/339 SF
EPHEMERAL WUS	LF/SF	LF/SF
WETLAND BUFFER	SF	SF
100-YEAR FLOODPLAIN	SF	SF

**WETLAND IMPACT PLATE**

I-95 ETL NORTHBOUND EXTENSION  
 MD 152 TO MD 24  
 JOHN F. KENNEDY MEMORIAL HIGHWAY  
 HARFORD COUNTY, MARYLAND



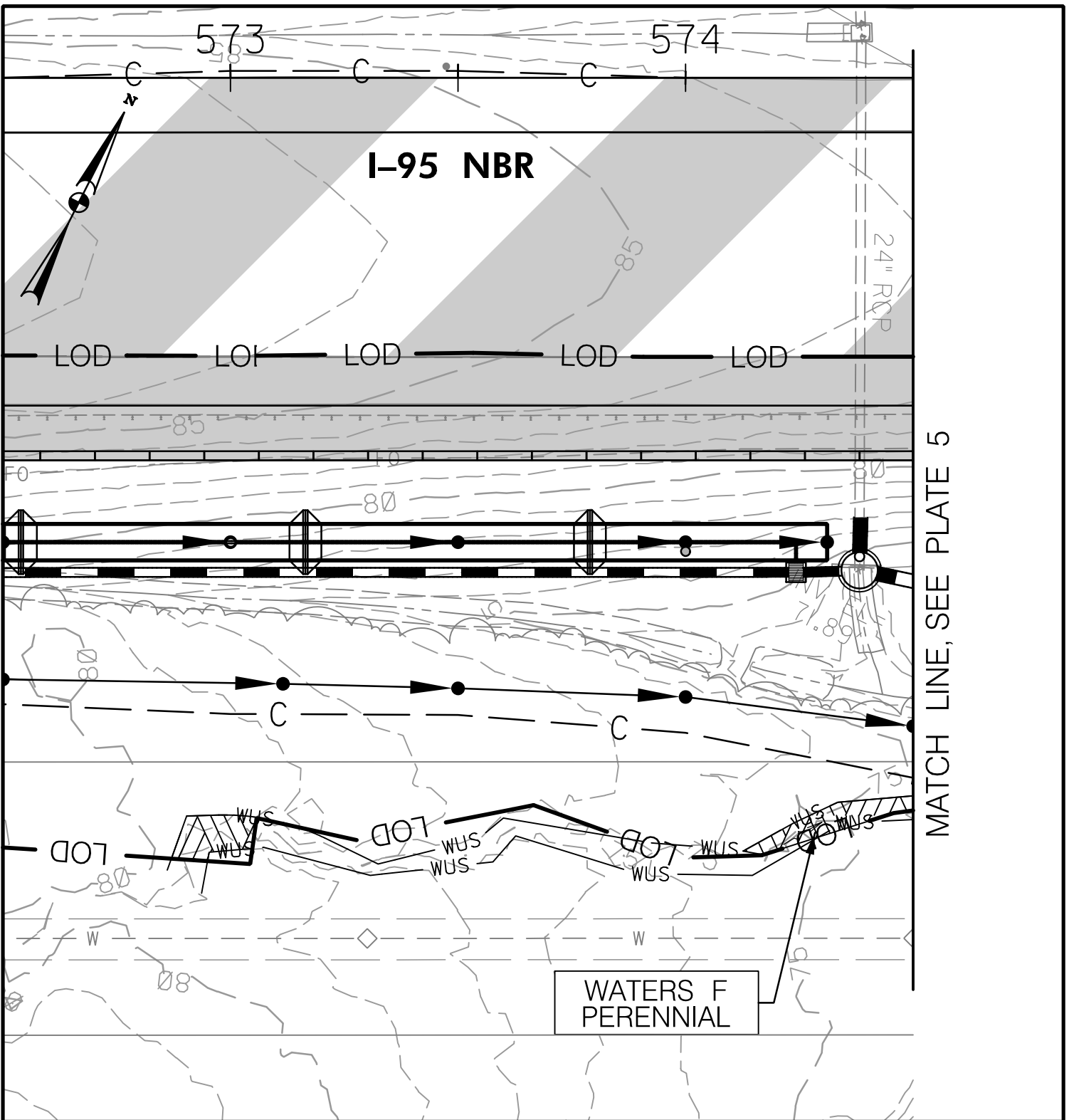
**MARYLAND  
 TRANSPORTATION AUTHORITY**

SCALE: 1" = 30'

CONTRACT NO.: KH3010-0000

DATE: OCTOBER 2020

PLATE 3 OF 19



**IMPACTS ON THIS PLATE**

	TEMPORARY	PERMANENT
PFO WETLAND	SF	SF
PSS WETLAND	SF	SF
PEM WETLAND	SF	SF
PFO/PEM WETLAND	SF	SF
PERENNIAL WUS	101 LF/342 SF	LF/SF
INTERMITTENT WUS	LF/SF	LF/SF
EPHEMERAL WUS	LF/SF	LF/SF
WETLAND BUFFER	SF	SF
100-YEAR FLOODPLAIN	SF	SF

**WETLAND IMPACT PLATE**

I-95 ETL NORTHBOUND EXTENSION  
 MD 152 TO MD 24  
 JOHN F. KENNEDY MEMORIAL HIGHWAY  
 HARFORD COUNTY, MARYLAND



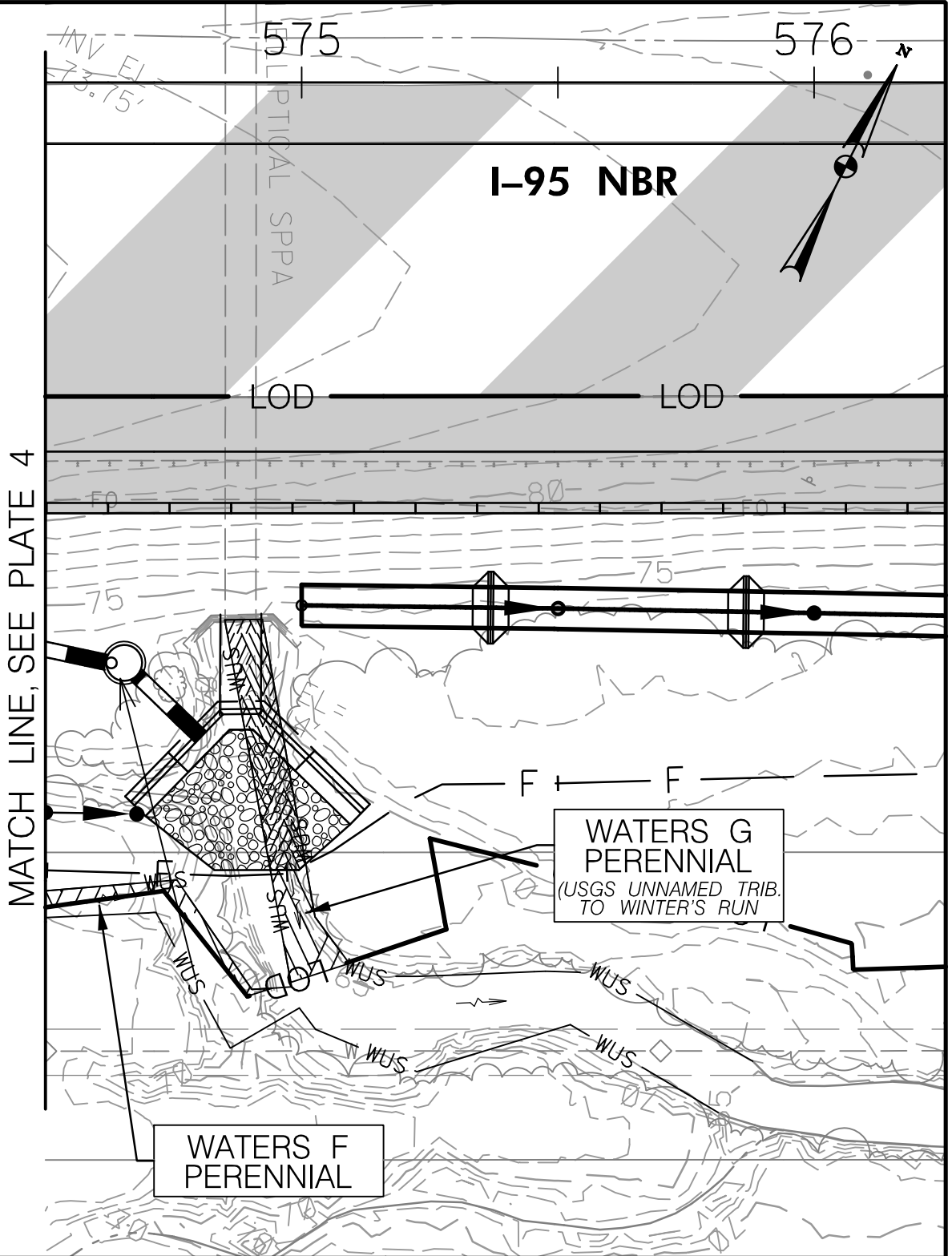
**MARYLAND  
 TRANSPORTATION AUTHORITY**

SCALE: 1" = 30'

CONTRACT NO.: KH3010-0000

DATE: OCTOBER 2020

PLATE 4 OF 19



**IMPACTS ON THIS PLATE**

	TEMPORARY	PERMANENT
PFO WETLAND	SF	SF
PSS WETLAND	SF	SF
PEM WETLAND	SF	SF
PFO/PEM WETLAND	SF	SF
PERENNIAL WUS	77 LF/297 SF	51 LF/355 SF
INTERMITTENT WUS	LF/SF	LF/SF
EPHEMERAL WUS	LF/SF	LF/SF
WETLAND BUFFER	SF	SF
100-YEAR FLOODPLAIN	SF	SF

**WETLAND IMPACT PLATE**

I-95 ETL NORTHBOUND EXTENSION  
 MD 152 TO MD 24  
 JOHN F. KENNEDY MEMORIAL HIGHWAY  
 HARFORD COUNTY, MARYLAND



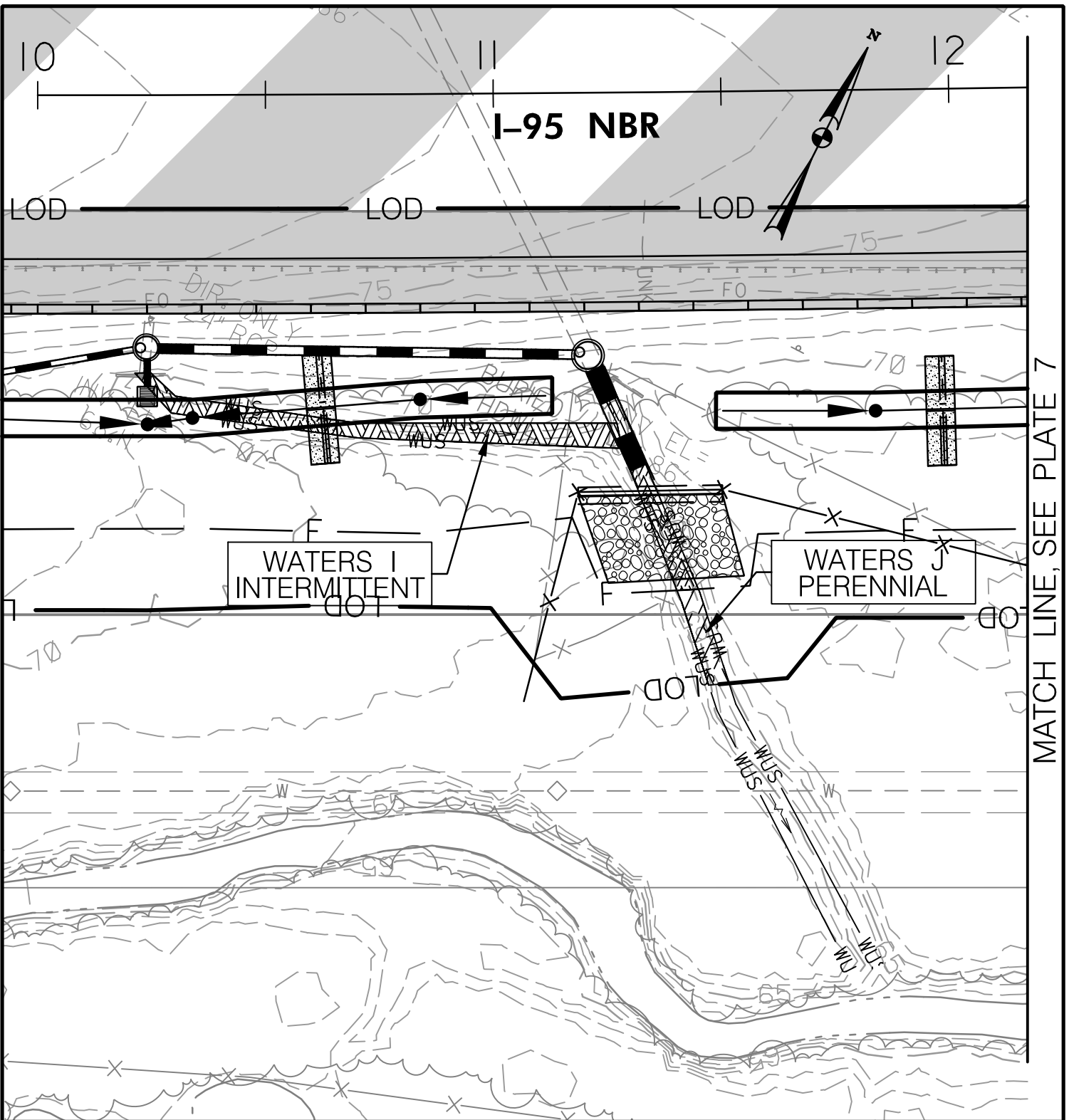
**MARYLAND  
 TRANSPORTATION AUTHORITY**

SCALE: 1" = 30'

CONTRACT NO.: KH3010-0000

DATE: OCTOBER 2020

PLATE 5 OF 19



**IMPACTS ON THIS PLATE**

	TEMPORARY	PERMANENT
PFO WETLAND	SF	SF
PSS WETLAND	SF	SF
PEM WETLAND	SF	SF
PFO/PEM WETLAND	SF	SF
PERENNIAL WUS	22 LF/96 SF	53 LF/183 SF
INTERMITTENT WUS	LF/SF	111 LF/423 SF
EPHEMERAL WUS	LF/SF	LF/SF
WETLAND BUFFER	SF	SF
100-YEAR FLOODPLAIN	SF	SF

**WETLAND IMPACT PLATE**

I-95 ETL NORTHBOUND EXTENSION  
 MD 152 TO MD 24  
 JOHN F. KENNEDY MEMORIAL HIGHWAY  
 HARFORD COUNTY, MARYLAND



**MARYLAND  
 TRANSPORTATION AUTHORITY**

SCALE: 1" = 30'

CONTRACT NO.: KH3010-0000

DATE: OCTOBER 2020

PLATE 6 OF 19



# I-95 NBR



LOD

LOD

LOD

MATCH LINE, SEE PLATE 6

WETLAND H  
PFO /PEM

### IMPACTS ON THIS PLATE

	TEMPORARY	PERMANENT
PFO WETLAND	SF	SF
PSS WETLAND	SF	SF
PEM WETLAND	SF	SF
PFO/PEM WETLAND	SF	2,386 SF
PERENNIAL WUS	LF/SF	LF/SF
INTERMITTENT WUS	LF/SF	LF/SF
EPHEMERAL WUS	LF/SF	LF/SF
WETLAND BUFFER	SF	5,628 SF
100-YEAR FLOODPLAIN	SF	SF

### WETLAND IMPACT PLATE

I-95 ETL NORTHBOUND EXTENSION  
MD 152 TO MD 24  
JOHN F. KENNEDY MEMORIAL HIGHWAY  
HARFORD COUNTY, MARYLAND



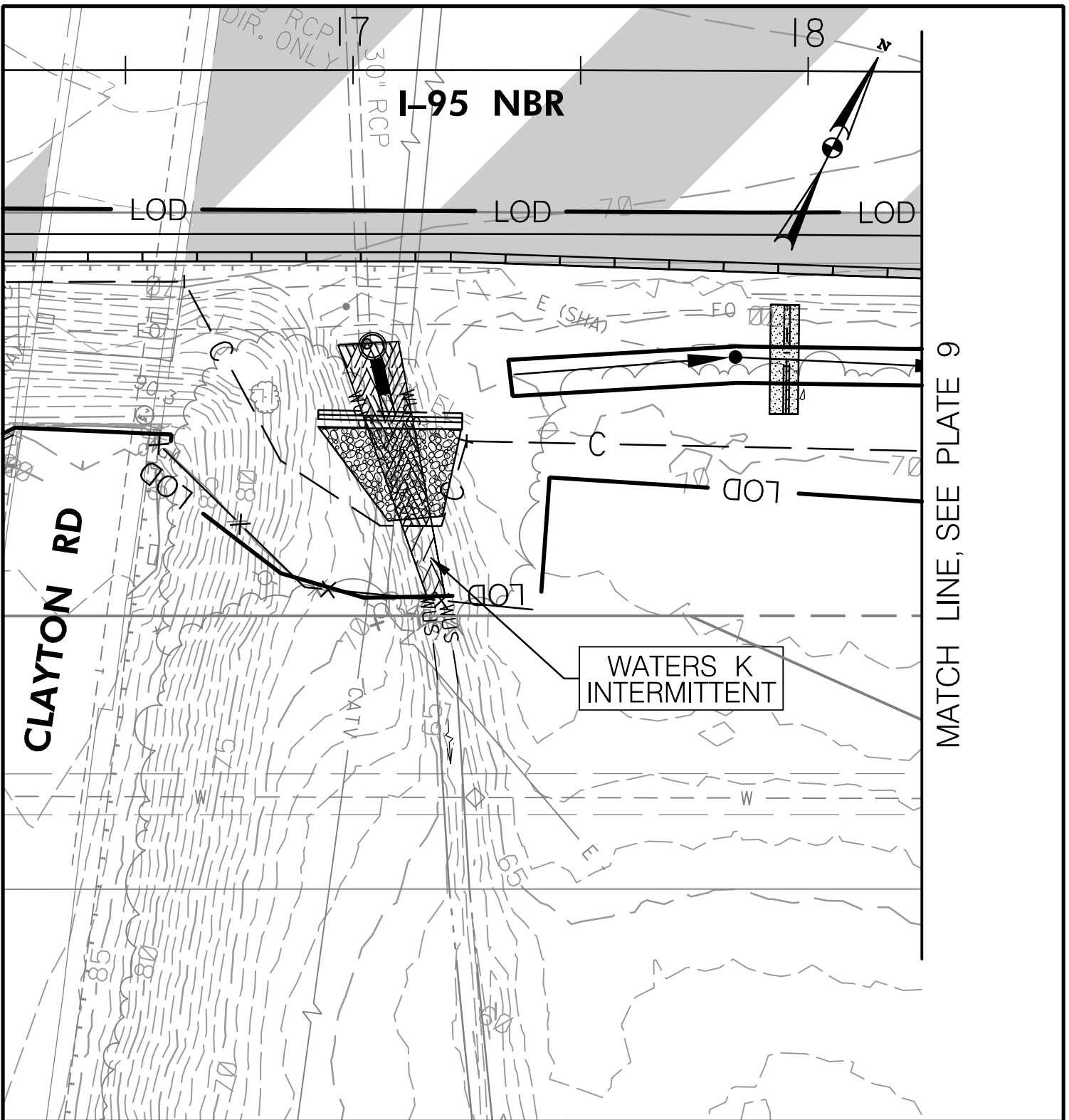
**MARYLAND  
TRANSPORTATION AUTHORITY**

SCALE: 1" = 30'

CONTRACT NO.: KH3010-0000

DATE: OCTOBER 2020

PLATE 7 OF 19



MATCH LINE, SEE PLATE 9

**IMPACTS ON THIS PLATE**

	TEMPORARY	PERMANENT
PFO WETLAND	SF	SF
PSS WETLAND	SF	SF
PEM WETLAND	SF	SF
PFO/PEM WETLAND	SF	SF
PERENNIAL WUS	LF/SF	LF/SF
INTERMITTENT WUS	16 LF/82 SF	42 LF/402 SF
EPHEMERAL WUS	LF/SF	LF/SF
WETLAND BUFFER	SF	SF
100-YEAR FLOODPLAIN	SF	SF

**WETLAND IMPACT PLATE**

I-95 ETL NORTHBOUND EXTENSION  
 MD 152 TO MD 24  
 JOHN F. KENNEDY MEMORIAL HIGHWAY  
 HARFORD COUNTY, MARYLAND



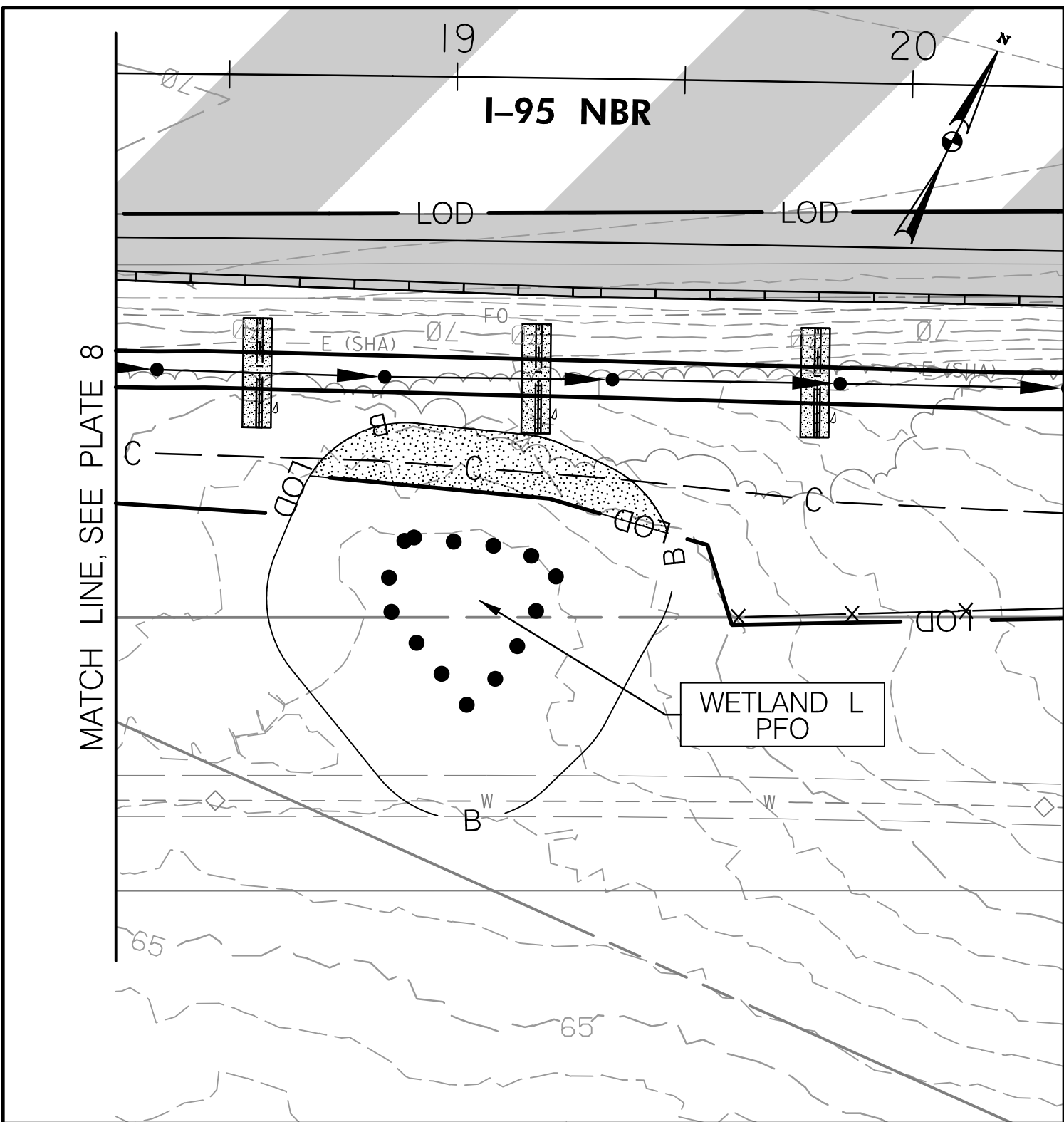
**MARYLAND  
 TRANSPORTATION AUTHORITY**

SCALE: 1" = 30'

CONTRACT NO.: KH3010-0000

DATE: OCTOBER 2020

PLATE 8 OF 19



MATCH LINE, SEE PLATE 8

**IMPACTS ON THIS PLATE**

	TEMPORARY	PERMANENT
PFO WETLAND	SF	SF
PSS WETLAND	SF	SF
PEM WETLAND	SF	SF
PFO/PEM WETLAND	SF	SF
PERENNIAL WUS	LF/SF	LF/SF
INTERMITTENT WUS	LF/SF	LF/SF
EPHEMERAL WUS	LF/SF	LF/SF
WETLAND BUFFER	SF	875 SF
100-YEAR FLOODPLAIN	SF	SF

**WETLAND IMPACT PLATE**

I-95 ETL NORTHBOUND EXTENSION  
 MD 152 TO MD 24  
 JOHN F. KENNEDY MEMORIAL HIGHWAY  
 HARFORD COUNTY, MARYLAND



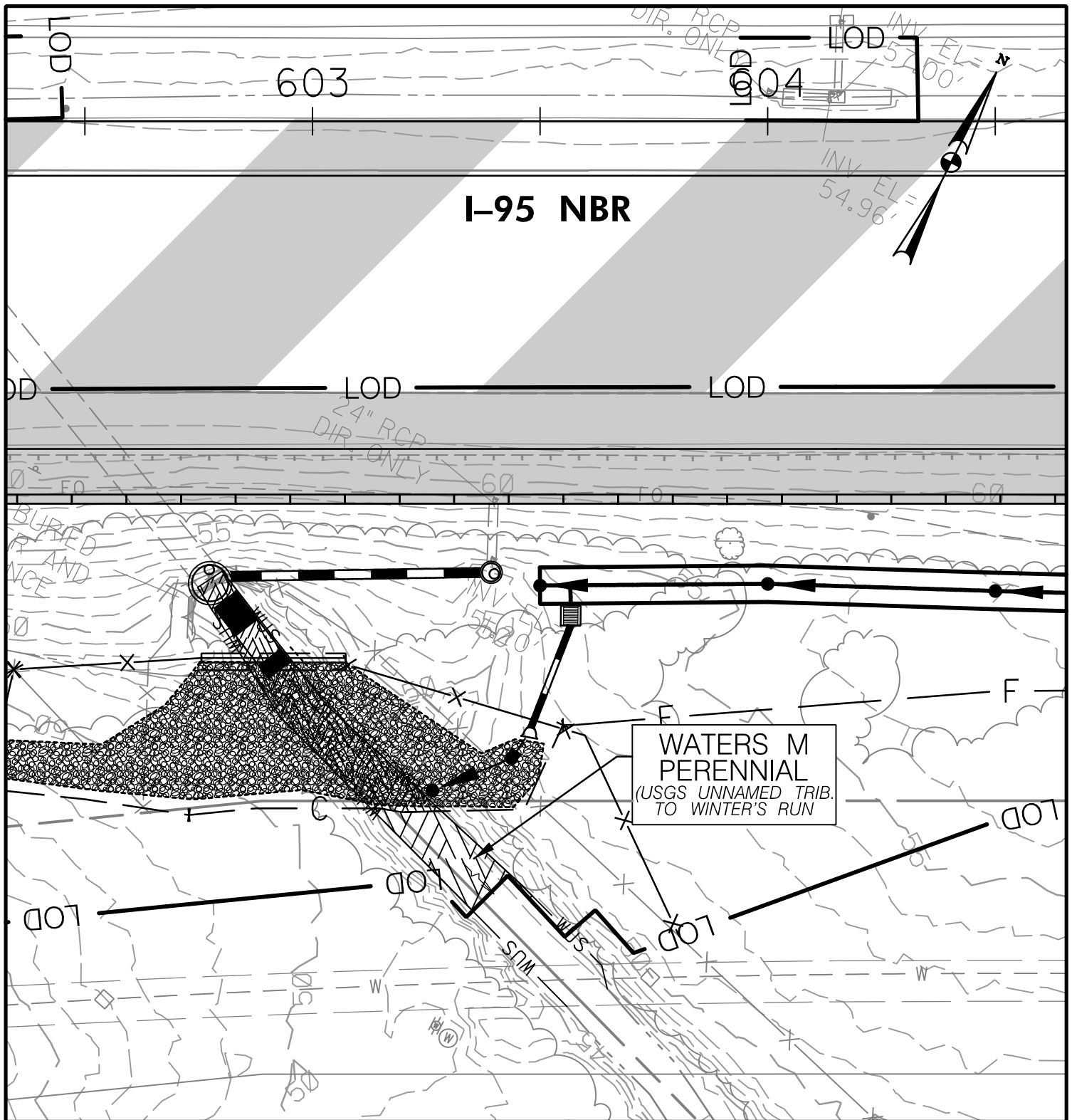
**MARYLAND  
 TRANSPORTATION AUTHORITY**

SCALE: 1" = 30'

CONTRACT NO.: KH3010-0000

DATE: OCTOBER 2020

PLATE 9 OF 19



**IMPACTS ON THIS PLATE**

	TEMPORARY	PERMANENT
PFO WETLAND	SF	SF
PSS WETLAND	SF	SF
PEM WETLAND	SF	SF
PFO/PEM WETLAND	SF	SF
PERENNIAL WUS	39 LF/297 SF	72 LF/592 SF
INTERMITTENT WUS	LF/SF	LF/SF
EPHEMERAL WUS	LF/SF	LF/SF
WETLAND BUFFER	SF	SF
100-YEAR FLOODPLAIN	SF	SF

**WETLAND IMPACT PLATE**

I-95 ETL NORTHBOUND EXTENSION  
 MD 152 TO MD 24  
 JOHN F. KENNEDY MEMORIAL HIGHWAY  
 HARFORD COUNTY, MARYLAND



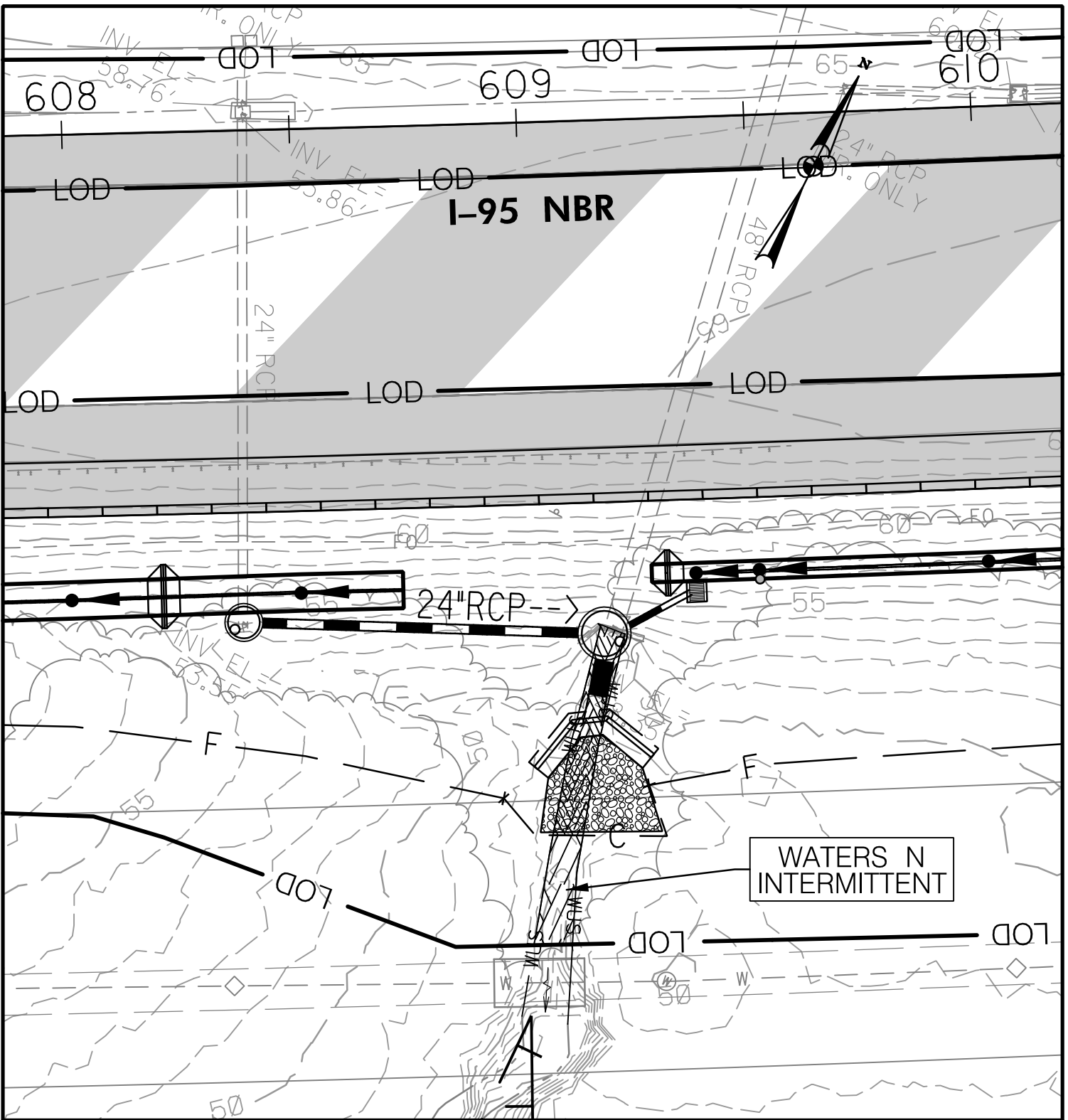
**MARYLAND  
 TRANSPORTATION AUTHORITY**

SCALE: 1" = 30'

CONTRACT NO.: KH3010-0000

DATE: OCTOBER 2020

PLATE 10 OF 19



**IMPACTS ON THIS PLATE**

	TEMPORARY	PERMANENT
PFO WETLAND	SF	SF
PSS WETLAND	SF	SF
PEM WETLAND	SF	SF
PFO/PEM WETLAND	SF	SF
PERENNIAL WUS	LF/SF	LF/SF
INTERMITTENT WUS	25 LF/174 SF	48 LF/280 SF
EPHEMERAL WUS	LF/SF	LF/SF
WETLAND BUFFER	SF	SF
100-YEAR FLOODPLAIN	SF	SF

**WETLAND IMPACT PLATE**

I-95 ETL NORTHBOUND EXTENSION  
 MD 152 TO MD 24  
 JOHN F. KENNEDY MEMORIAL HIGHWAY  
 HARFORD COUNTY, MARYLAND



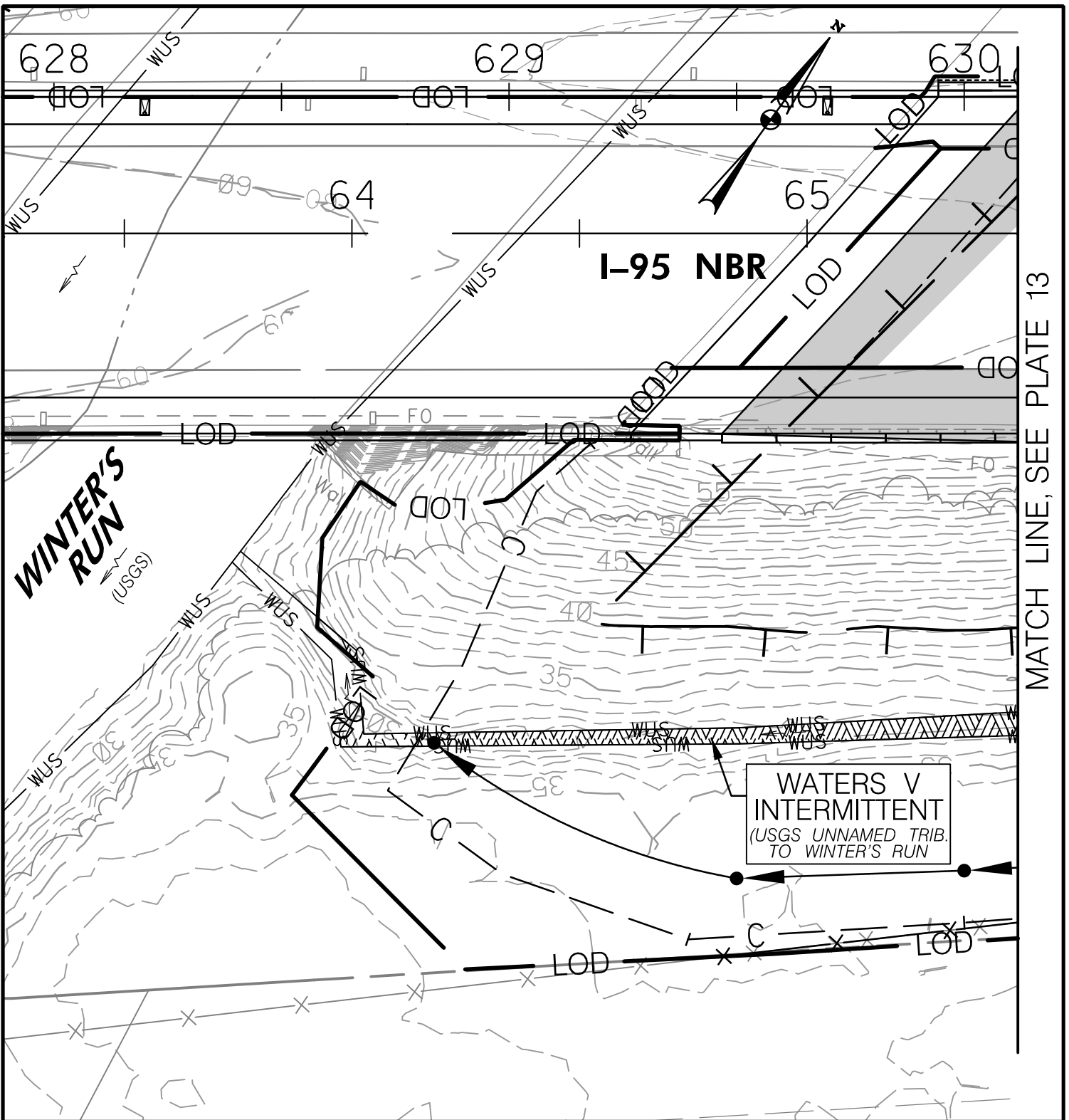
**MARYLAND  
 TRANSPORTATION AUTHORITY**

SCALE: 1" = 30'

CONTRACT NO.: KH3010-0000

DATE: OCTOBER 2020

PLATE II OF 19



**IMPACTS ON THIS PLATE**

	TEMPORARY	PERMANENT
PFO WETLAND	SF	SF
PSS WETLAND	SF	SF
PEM WETLAND	SF	SF
PFO/PEM WETLAND	SF	SF
PERENNIAL WUS	LF/SF	SF
INTERMITTENT WUS	35 LF/88 SF	131 LF/492 SF
EPHEMERAL WUS	LF/SF	LF/SF
WETLAND BUFFER	SF	SF
100-YEAR FLOODPLAIN	588 SF	12,826 SF

**WETLAND IMPACT PLATE**

I-95 ETL NORTHBOUND EXTENSION  
 MD 152 TO MD 24  
 JOHN F. KENNEDY MEMORIAL HIGHWAY  
 HARFORD COUNTY, MARYLAND



**MARYLAND  
 TRANSPORTATION AUTHORITY**

SCALE: 1" = 30'

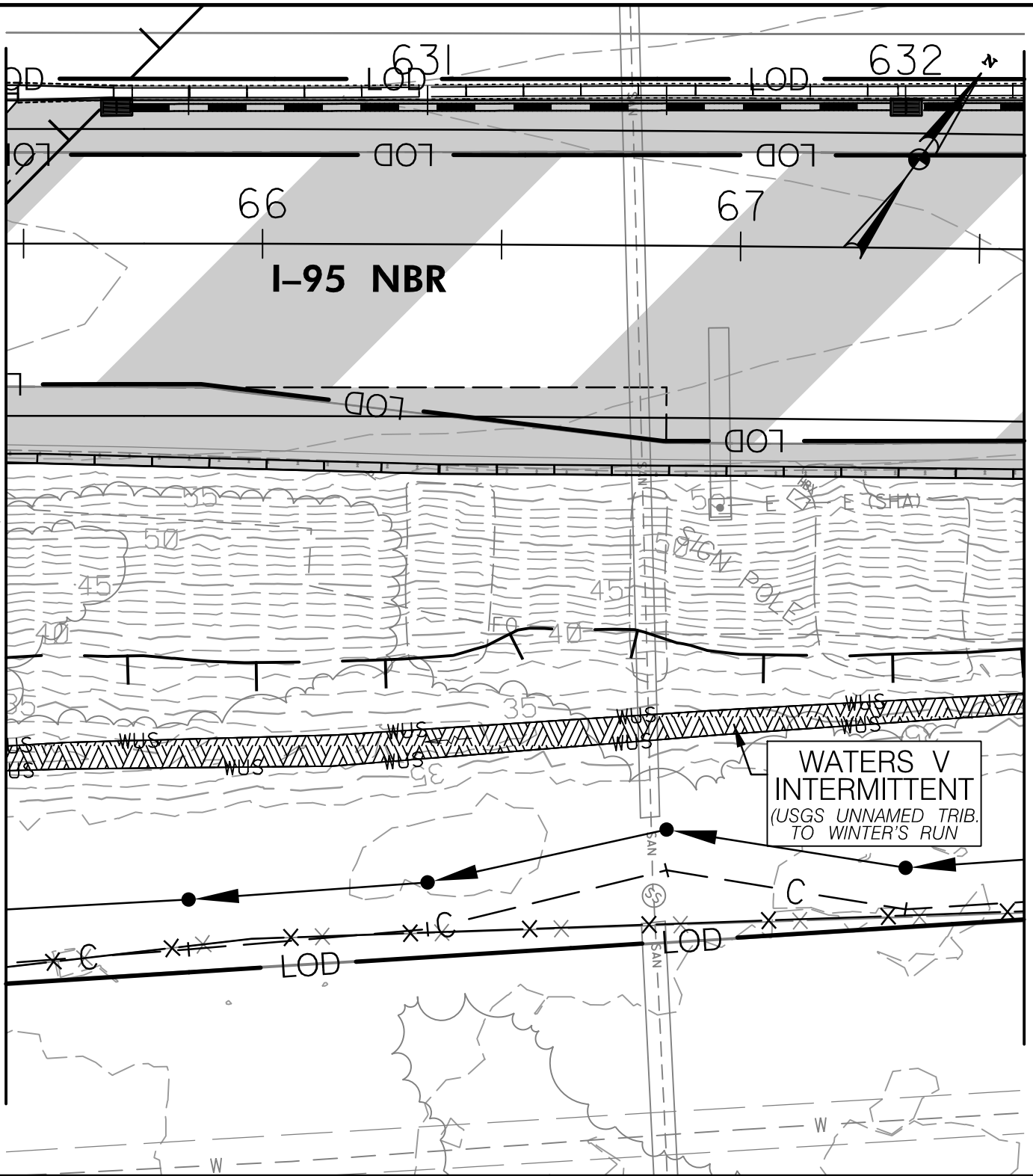
CONTRACT NO.: KH3010-0000

DATE: OCTOBER 2020

PLATE 12 OF 19

MATCH LINE, SEE PLATE 12

MATCH LINE, SEE PLATE 14



**IMPACTS ON THIS PLATE**

	TEMPORARY	PERMANENT
PFO WETLAND	SF	SF
PSS WETLAND	SF	SF
PEM WETLAND	SF	SF
PFO/PEM WETLAND	SF	SF
PERENNIAL WUS	LF/SF	LF/SF
INTERMITTENT WUS	LF/SF	214 LF/1,173 SF
EPHEMERAL WUS	LF/SF	LF/SF
WETLAND BUFFER	SF	SF
100-YEAR FLOODPLAIN	SF	12,481 SF

**WETLAND IMPACT PLATE**

I-95 ETL NORTHBOUND EXTENSION  
 MD 152 TO MD 24  
 JOHN F. KENNEDY MEMORIAL HIGHWAY  
 HARFORD COUNTY, MARYLAND



**MARYLAND  
 TRANSPORTATION AUTHORITY**

SCALE: 1" = 30'

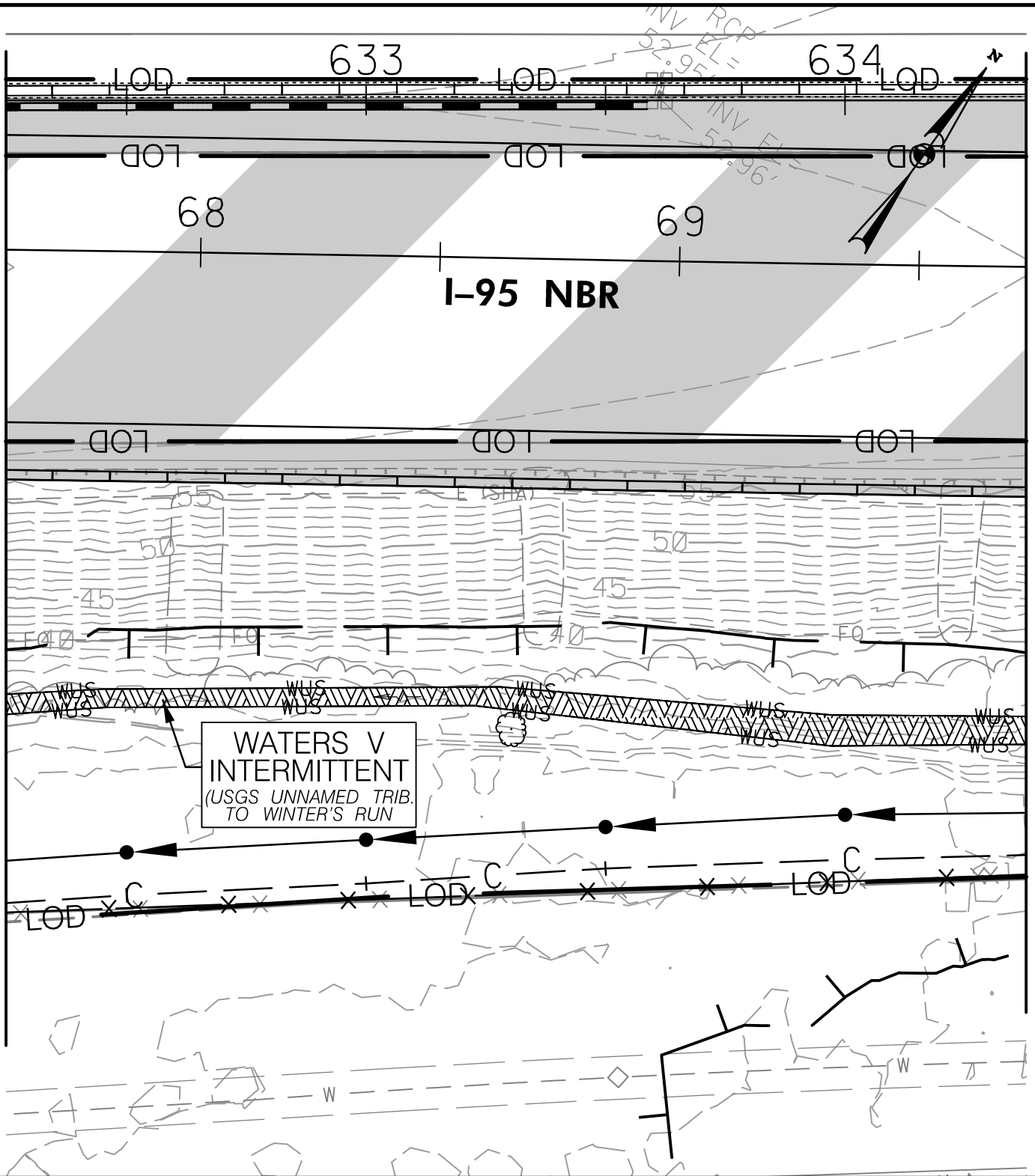
CONTRACT NO.: KH3010-0000

DATE: OCTOBER 2020

PLATE 13 OF 19

MATCH LINE, SEE PLATE 13

MATCH LINE, SEE PLATE 15



**IMPACTS ON THIS PLATE**

	TEMPORARY	PERMANENT
PFO WETLAND	SF	SF
PSS WETLAND	SF	SF
PEM WETLAND	SF	SF
PFO/PEM WETLAND	SF	SF
PERENNIAL WUS	LF/SF	LF/SF
INTERMITTENT WUS	LF/SF	213 LF/1,035 SF
EPHEMERAL WUS	LF/SF	LF/SF
WETLAND BUFFER	SF	SF
100-YEAR FLOODPLAIN	SF	10,607 SF

**WETLAND IMPACT PLATE**

I-95 ETL NORTHBOUND EXTENSION  
 MD 152 TO MD 24  
 JOHN F. KENNEDY MEMORIAL HIGHWAY  
 HARFORD COUNTY, MARYLAND



**MARYLAND  
 TRANSPORTATION AUTHORITY**

SCALE: 1" = 30'

CONTRACT NO.: KH3010-0000

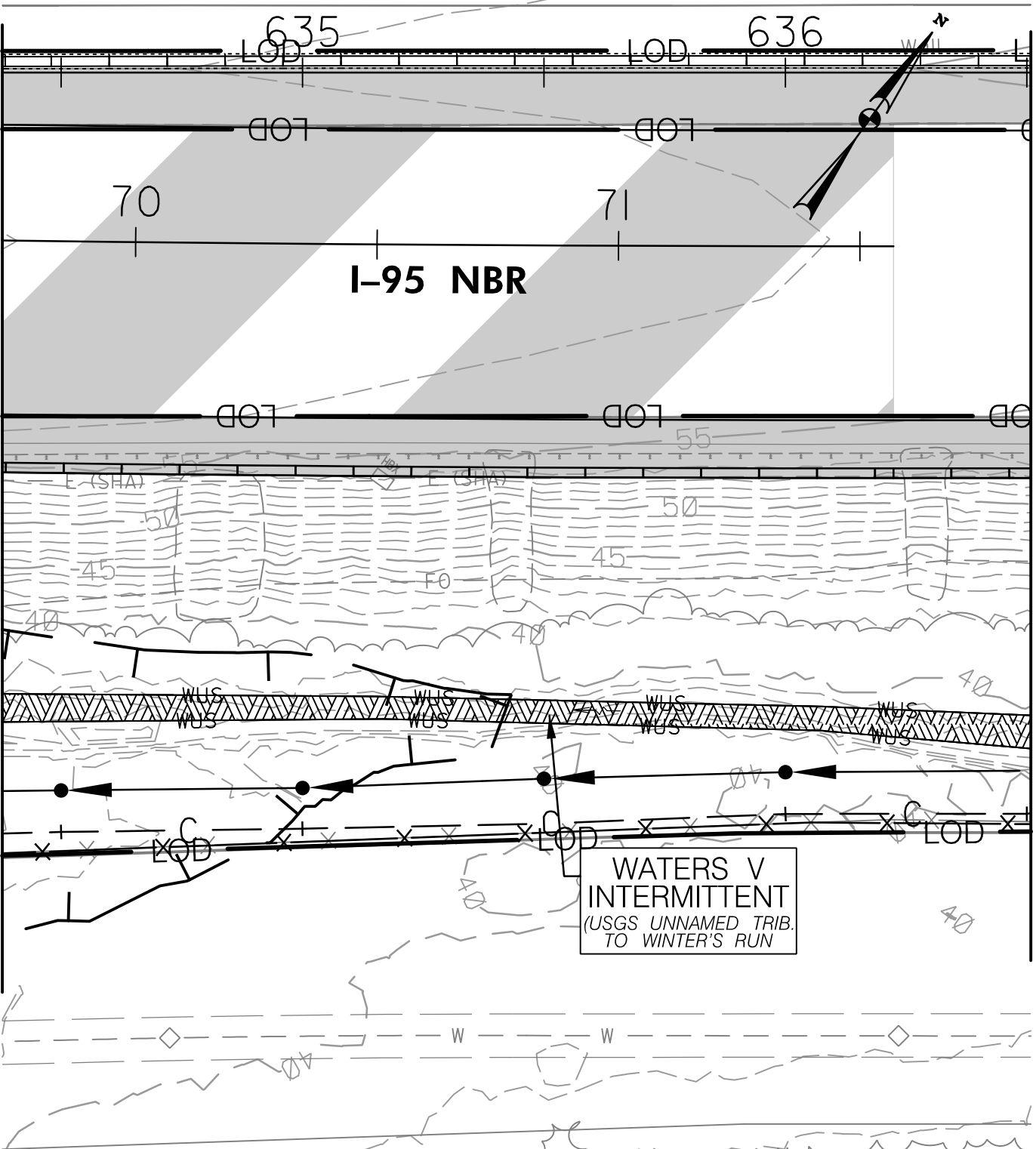
DATE: OCTOBER 2020

PLATE 14 OF 19



MATCH LINE, SEE PLATE 14

MATCH LINE, SEE PLATE 16



**IMPACTS ON THIS PLATE**

	TEMPORARY	PERMANENT
PFO WETLAND	SF	SF
PSS WETLAND	SF	SF
PEM WETLAND	SF	SF
PFO/PEM WETLAND	SF	SF
PERENNIAL WUS	LF/SF	LF/SF
INTERMITTENT WUS	LF/SF	213 LF/1,110 SF
EPHEMERAL WUS	LF/SF	LF/SF
WETLAND BUFFER	SF	SF
100-YEAR FLOODPLAIN	SF	2,889 SF

**WETLAND IMPACT PLATE**

I-95 ETL NORTHBOUND EXTENSION  
 MD 152 TO MD 24  
 JOHN F. KENNEDY MEMORIAL HIGHWAY  
 HARFORD COUNTY, MARYLAND



**MARYLAND  
 TRANSPORTATION AUTHORITY**

SCALE: 1" = 30'

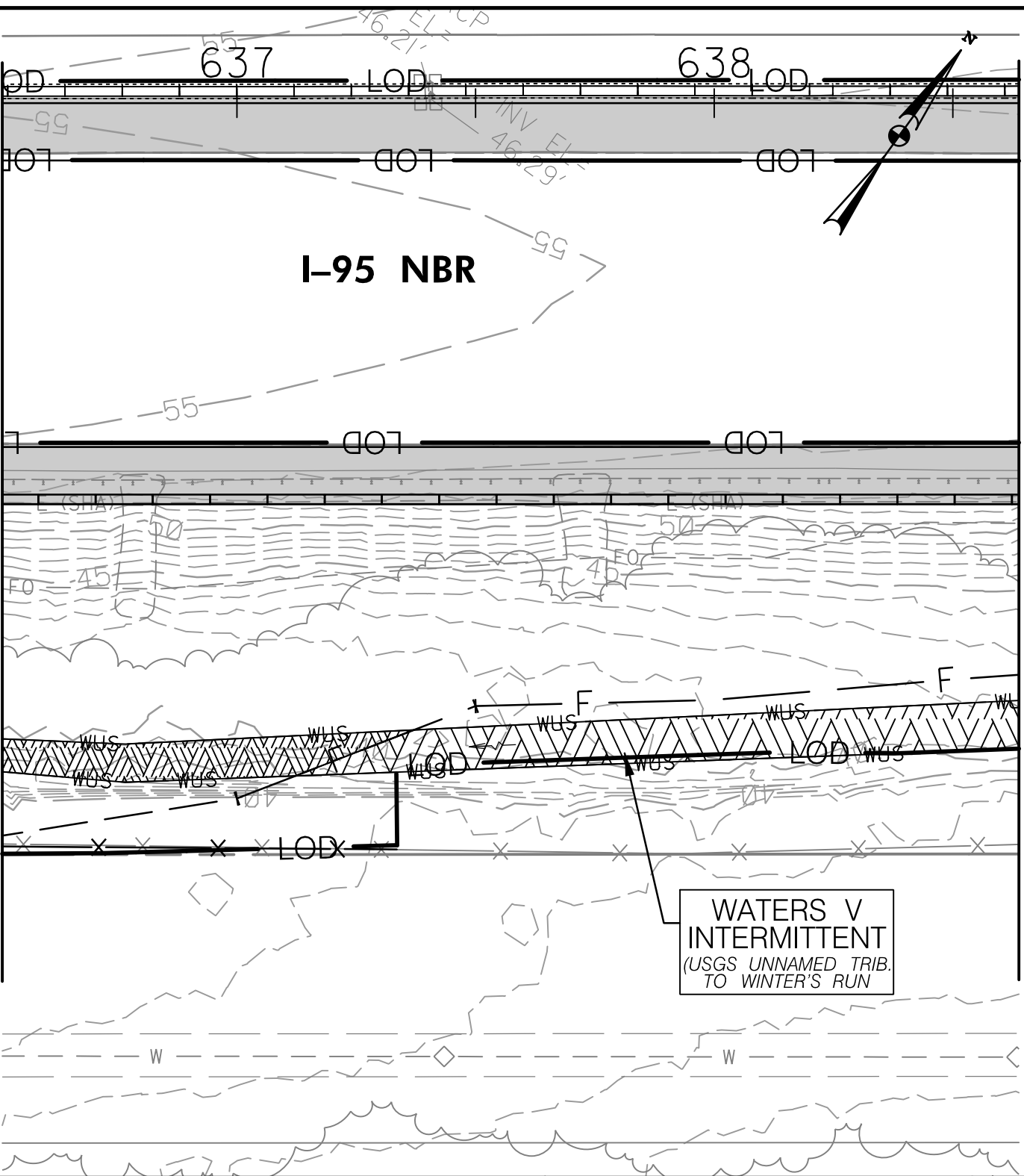
CONTRACT NO.: KH3010-0000

DATE: OCTOBER 2020

PLATE 15 OF 19

MATCH LINE, SEE PLATE 15

MATCH LINE, SEE PLATE 17



**WATERS V  
INTERMITTENT**  
(USGS UNNAMED TRIB.  
TO WINTER'S RUN)

**IMPACTS ON THIS PLATE**

	TEMPORARY	PERMANENT
PFO WETLAND	SF	SF
PSS WETLAND	SF	SF
PEM WETLAND	SF	SF
PFO/PEM WETLAND	SF	SF
PERENNIAL WUS	LF/SF	LF/SF
INTERMITTENT WUS	127 LF/1,185 SF	86 LF/588 SF
EPHEMERAL WUS	LF/SF	LF/SF
WETLAND BUFFER	SF	SF
100-YEAR FLOODPLAIN	SF	SF

**WETLAND IMPACT PLATE**

I-95 ETL NORTHBOUND EXTENSION  
MD 152 TO MD 24  
JOHN F. KENNEDY MEMORIAL HIGHWAY  
HARFORD COUNTY, MARYLAND



**MARYLAND  
TRANSPORTATION AUTHORITY**

SCALE: 1" = 30'

CONTRACT NO.: KH3010-0000

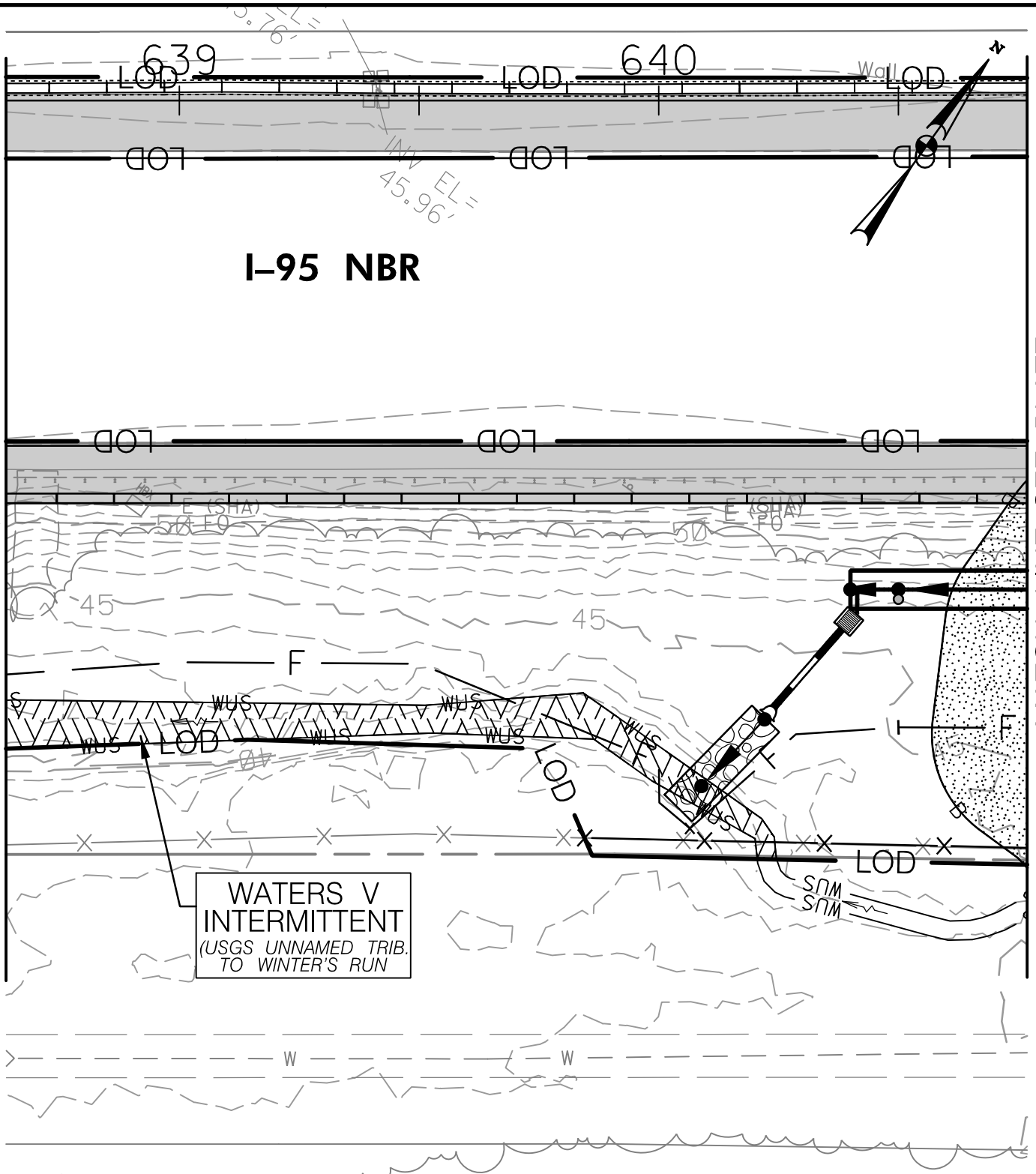
DATE: OCTOBER 2020

PLATE 16 OF 19

MATCH LINE, SEE PLATE 16

MATCH LINE, SEE PLATE 18

# I-95 NBR



### IMPACTS ON THIS PLATE

	TEMPORARY	PERMANENT
PFO WETLAND	SF	SF
PSS WETLAND	SF	SF
PEM WETLAND	SF	SF
PFO/PEM WETLAND	SF	SF
PERENNIAL WUS	LF/SF	LF/SF
INTERMITTENT WUS	165 LF/1,193 SF	10 LF/54 SF
EPHEMERAL WUS	LF/SF	LF/SF
WETLAND BUFFER	SF	1,111 SF
100-YEAR FLOODPLAIN	SF	SF

### WETLAND IMPACT PLATE

I-95 ETL NORTHBOUND EXTENSION  
 MD 152 TO MD 24  
 JOHN F. KENNEDY MEMORIAL HIGHWAY  
 HARFORD COUNTY, MARYLAND



**MARYLAND**  
**TRANSPORTATION AUTHORITY**

SCALE: 1" = 30'

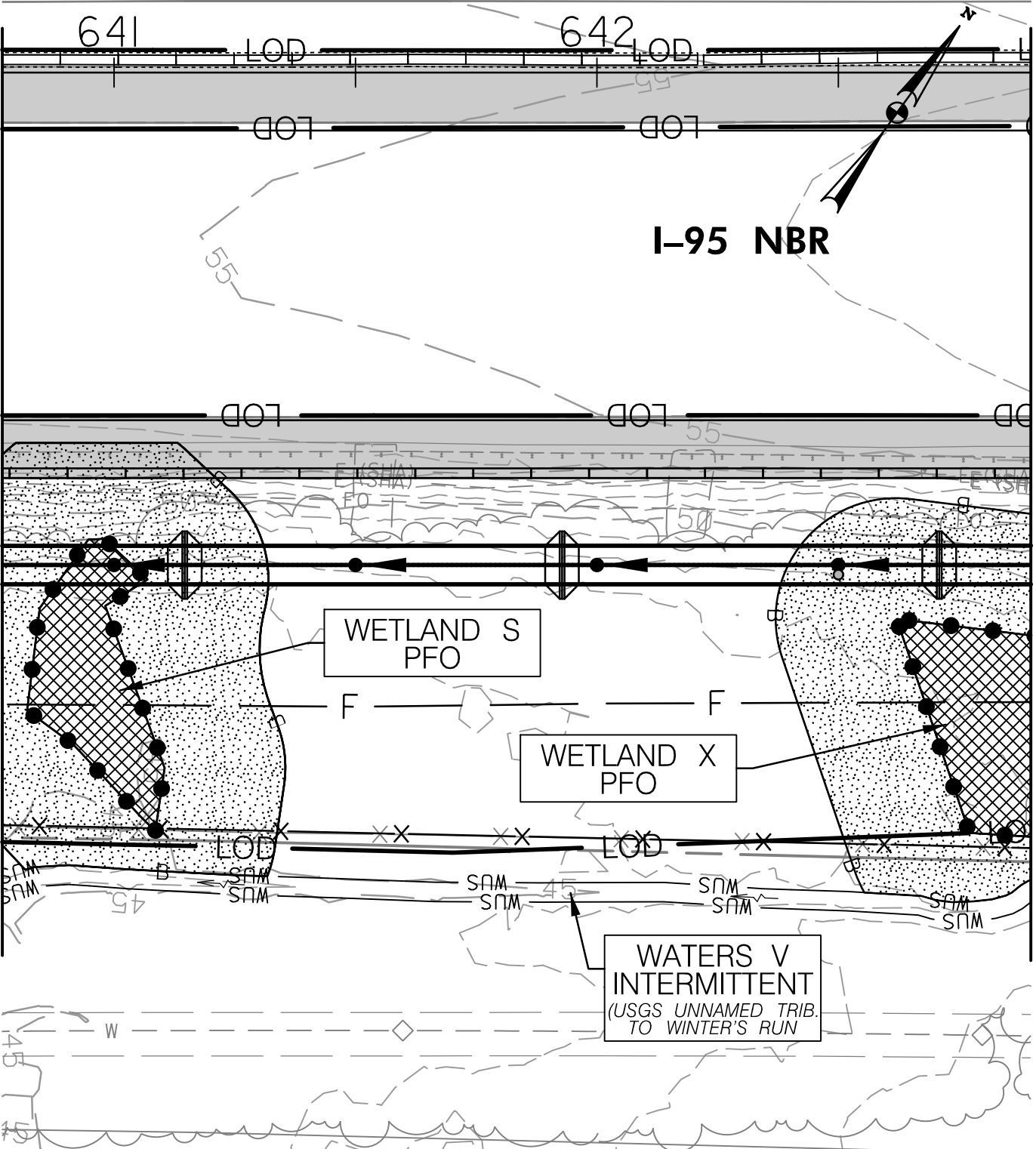
CONTRACT NO.: KH3010-0000

DATE: OCTOBER 2020

PLATE 17 OF 19

MATCH LINE, SEE PLATE 17

MATCH LINE, SEE PLATE 19



**IMPACTS ON THIS PLATE**

	TEMPORARY	PERMANENT
PFO WETLAND	SF	1,757 SF
PSS WETLAND	SF	SF
PEM WETLAND	SF	SF
PFO/PEM WETLAND	SF	SF
PERENNIAL WUS	LF/SF	LF/SF
INTERMITTENT WUS	LF/SF	LF/SF
EPHEMERAL WUS	LF/SF	LF/SF
WETLAND BUFFER	SF	6,663 SF
100-YEAR FLOODPLAIN	SF	SF

**WETLAND IMPACT PLATE**

I-95 ETL NORTHBOUND EXTENSION  
 MD 152 TO MD 24  
 JOHN F. KENNEDY MEMORIAL HIGHWAY  
 HARFORD COUNTY, MARYLAND



**MARYLAND  
 TRANSPORTATION AUTHORITY**

SCALE: 1" = 30'

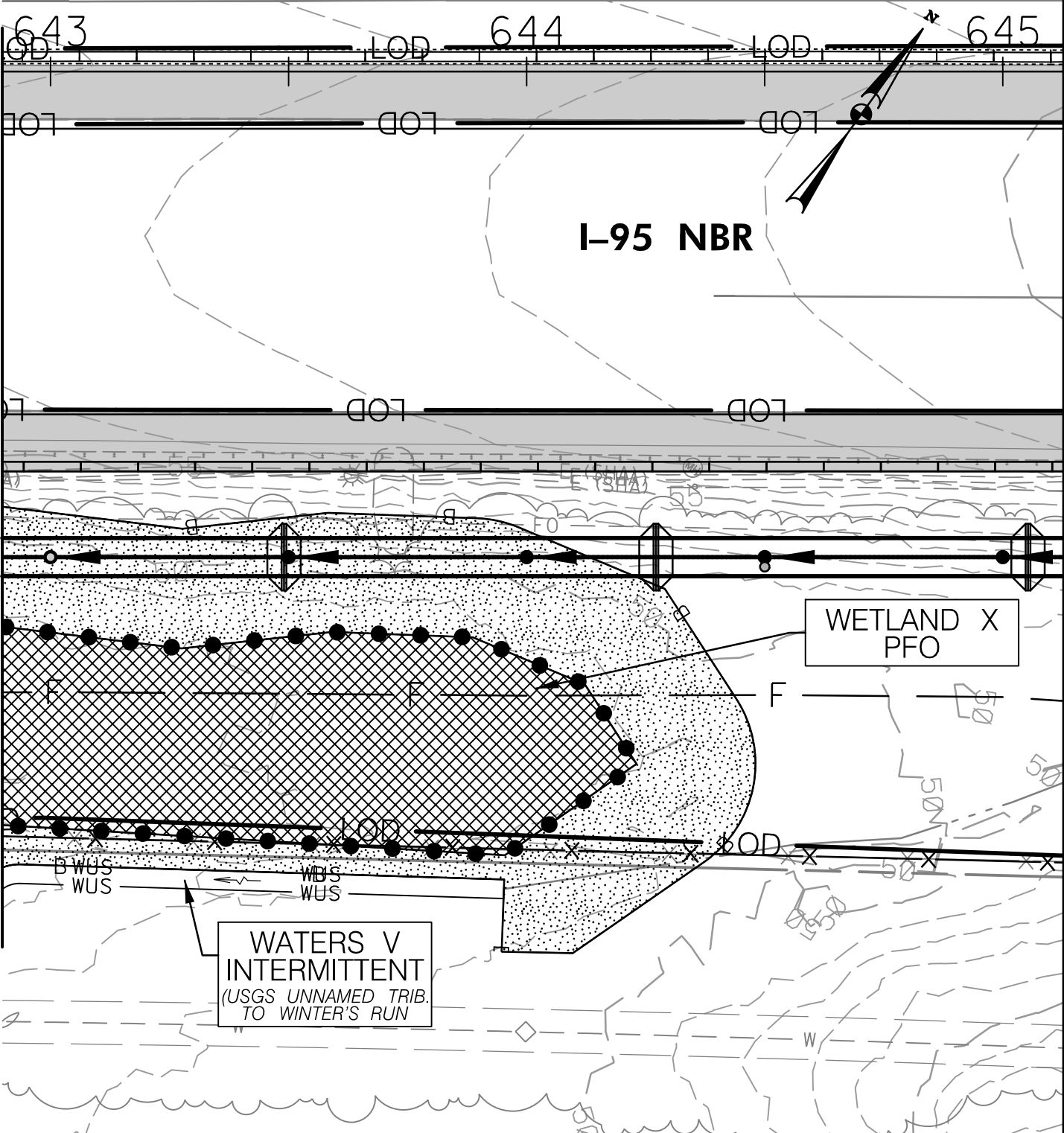
CONTRACT NO.: KH3010-0000

DATE: OCTOBER 2020

PLATE 18 OF 19

FILE: \\balsrv01\2014\2014\4006\_MDTAAE2795\Task 41 - I-95 Widening MD 152 to MD 24\Nat.Env\Impact Plates\WT-018\_195.dgn  
 DATE: 10/6/2020

MATCH LINE, SEE PLATE 18



**IMPACTS ON THIS PLATE**

	TEMPORARY	PERMANENT
PFO WETLAND	SF	5,182 SF
PSS WETLAND	SF	SF
PEM WETLAND	SF	SF
PFO/PEM WETLAND	SF	SF
PERENNIAL WUS	LF/SF	LF/SF
INTERMITTENT WUS	LF/SF	LF/SF
EPHEMERAL WUS	LF/SF	LF/SF
WETLAND BUFFER	SF	6,105 SF
100-YEAR FLOODPLAIN	SF	SF

**WETLAND IMPACT PLATE**

I-95 ETL NORTHBOUND EXTENSION  
MD 152 TO MD 24  
JOHN F. KENNEDY MEMORIAL HIGHWAY  
HARFORD COUNTY, MARYLAND



**MARYLAND  
TRANSPORTATION AUTHORITY**

SCALE: 1" = 30'

CONTRACT NO.: KH3010-0000

DATE: OCTOBER 2020

PLATE 19 OF 19