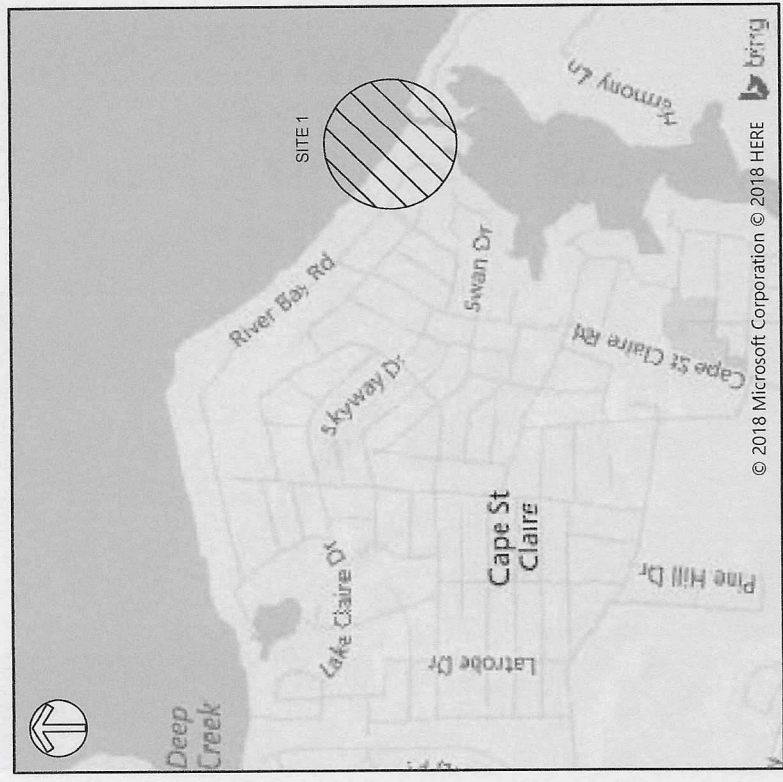


CAPE ST CLAIRE SHORELINE ENHANCEMENT - MAIN BEACH

ANNE ARUNDEL COUNTY, MD

VICINITY MAP



© 2018 Microsoft Corporation © 2018 HERE

SCALE: 1" = 2000'

SITE MAP



icrosoft Corporation © 2018 DigitalGlobe ©CNES (2018) Distribution Airbus DS

SCALE: 1" = 500'

CAPE ST CLAIRE IMPROVEMENT ASSOCIATION
1223 RIVER BAY ROAD
ANNAPOLIS, MD 21409

DATE ISSUES / REVISIONS
12/21/2018 INITIAL SUBMITTAL
04/01/2019 PRE-FINAL SUBMITTAL
01/23/2020 FINAL SUBMITTAL
04/27/2020 REVISIONS SUBMITTAL

Biohabitats
The Stables Building 2081 Clipper Park Road
Baltimore, MD 21211 / ph: 410.554.0156
fx: 410.554.0168 / www.biohabitats.com
Restores the Earth & Inspires Ecological Stewardship

SUSTAINABLE SCIENCE LLC
410 South Second St. Denton, MD 21629
ph: 410.924.4316
http://www.sustainablesience.com

CAPE ST. CLAIRE SHORELINE ENHANCEMENT - MAIN BEACH

TITLE: VICINITY MAP AND AERIAL PHOTO

PROJECT NO.: 17023.01

SCALE: AS SHOWN

BY: AM, TB
CHECK: EM

DWG. NO.: 1 OF 10

SHEET LIST TABLE

Sheet Number	Sheet Title
1	VICINITY MAP AND AERIAL PHOTO
2	SITE INDEX
3	EXISTING CONDITIONS
4	EXISTING CONDITIONS
5	PROPOSED CONDITIONS
6	PROPOSED CONDITIONS
7	IMPACT PLATES
8	IMPACT PLATES
9	CROSS SECTIONS
10	CROSS SECTIONS

18 W 1181
163289
1025.20

IMPACTS:

TOTAL OPEN WATER (BREAKWATER)	= 4,256 SF
TOTAL	= 4,256 SF

CAPE ST CLAIRE IMPROVEMENT
ASSOCIATION
1223 RIVER BAY ROAD
ANNAPOLIS, MD 21409

DATE	ISSUES / REVISIONS
12/21/2018	INITIAL SUBMITTAL
04/01/2019	PRE-FINAL SUBMITTAL
01/23/2020	FINAL SUBMITTAL
04/27/2020	REVISIONS SUBMITTAL

18461101
163289
1.25.20

Biohabitats
The Stables Building 2081 Clipper Park Road
Baltimore, MD 21211 / ph: 410.554.0156
fx: 410.554.0168 / www.biohabitats.com
Restoring the Earth's Ecological Sustainability

SUSTAINABLE SCIENCE LLC

410 South Second St. Denton, MD 21629
ph: 410.924.4316
http://www.sustainable-science.com

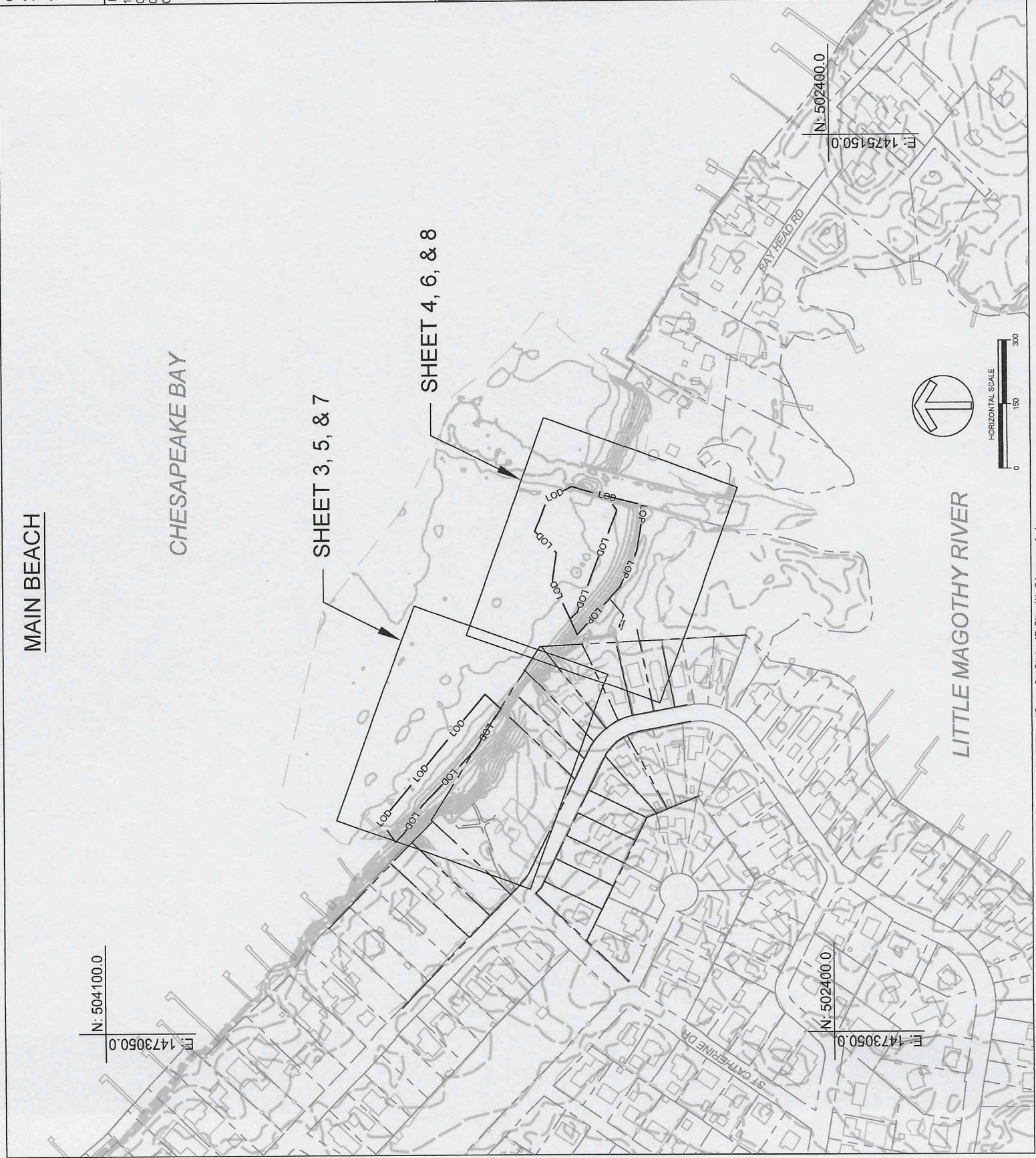
**CAPE ST. CLAIRE
SHORELINE
ENHANCEMENT -
MAIN BEACH**

TITLE: SITE INDEX
PROJECT NO.: 17023.01

SCALE: 1" = 300'

BY: AM, TB
CHECK: EM

DWG. NO.: 2 OF 10



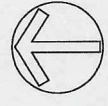
MAIN BEACH

CHESAPEAKE BAY

SHEET 3, 5, & 7

SHEET 4, 6, & 8

LITTLE MAGOTHY RIVER



CAPE ST CLAIRE IMPROVEMENT
ASSOCIATION
1223 RIVER BAY ROAD
ANNAPOLIS, MD 21409

DATE	ISSUES / REVISIONS
12/21/2018	INITIAL SUBMITTAL
04/01/2019	PRE-FINAL SUBMITTAL
01/23/2020	FINAL SUBMITTAL
04/27/2020	REVISIONS SUBMITTAL

18 WL 1181
16 3289
1.25-20

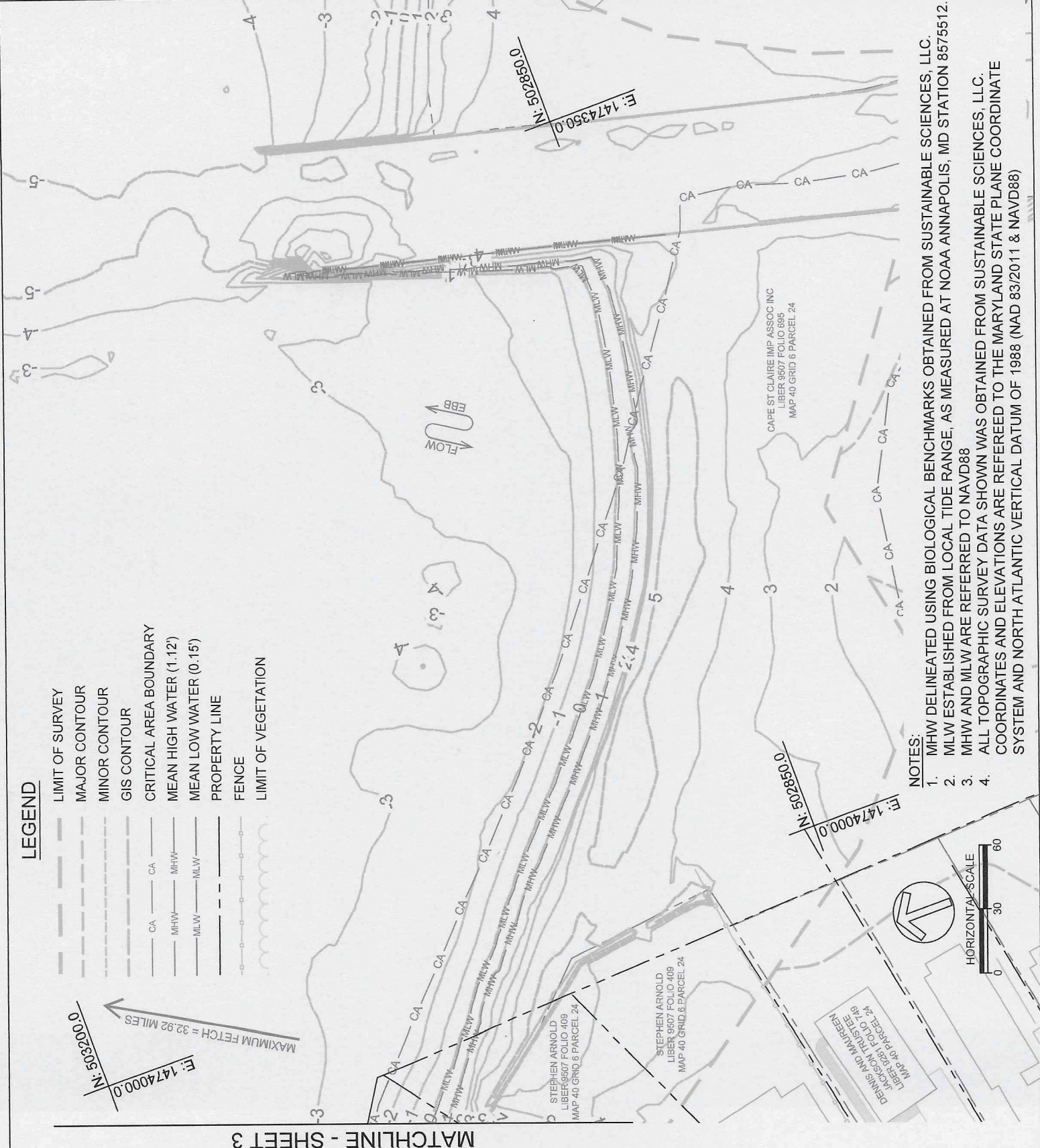
Biohabitats
The Stables Building 2181 Clipper Park Road
Baltimore, MD 21211 / ph: 410.554.0156
fx: 410.554.0168 / www.biohabitats.com
Restoring the Earth's Ecological Vulnerability

SUSTAINABLE SCIENCE LLC
410 South Second St. Denton, MD 21629
ph: 410.922.44316
http://www.sustainable-science.com

CAPE ST. CLAIRE
SHORELINE
ENHANCEMENT -
MAIN BEACH

TITLE:	EXISTING CONDITIONS
PROJECT NO.:	17023.01
SCALE:	1" = 60'

BY:	AM, TB	CHECK:	EM
DWG. NO.:	4		OF 10



LEGEND

- LIMIT OF SURVEY
- MAJOR CONTOUR
- MINOR CONTOUR
- GIS CONTOUR
- CRITICAL AREA BOUNDARY
- MEAN HIGH WATER (1.12)
- MEAN LOW WATER (0.15')
- PROPERTY LINE
- FENCE
- LIMIT OF VEGETATION

NOTES:

1. MHW DELINEATED USING BIOLOGICAL BENCHMARKS OBTAINED FROM SUSTAINABLE SCIENCES, LLC.
2. MLW ESTABLISHED FROM LOCAL TIDE RANGE, AS MEASURED AT NOAA ANNAPOLIS, MD STATION 8575512.
3. MHW AND MLW ARE REFERRED TO NAVD88
4. ALL TOPOGRAPHIC SURVEY DATA SHOWN WAS OBTAINED FROM SUSTAINABLE SCIENCES, LLC. COORDINATES AND ELEVATIONS ARE REFERRED TO THE MARYLAND STATE PLANE COORDINATE SYSTEM AND NORTH ATLANTIC VERTICAL DATUM OF 1988 (NAD 83/2011 & NAVD88)

CAPE ST. CLAIRE IMPROVEMENT ASSOCIATION
 1223 RIVER BAY ROAD
 ANNAPOLIS, MD 21409

DATE	ISSUES / REVISIONS
12/21/2018	INITIAL SUBMITTAL
04/01/2019	PRE-FINAL SUBMITTAL
01/23/2020	FINAL SUBMITTAL
04/27/2020	REVISIONS SUBMITTAL

18 W L 1181
 163289
 1.23.20

Biohabitats
 The Stables Building 2081 Clipper Park Road
 Baltimore, MD 21211 / ph: 410.554.0156
 fx: 410.554.0168 / www.biohabitats.com
Restoring the Earth's Ecological Sustainability

SUSTAINABLE SCIENCE LLC

410 South Second St. Denton, MD 21629
 ph: 410.924.4316
 http://www.sustainable-science.com

CAPE ST. CLAIRE SHORELINE ENHANCEMENT - MAIN BEACH

TITLE: EXISTING CONDITIONS

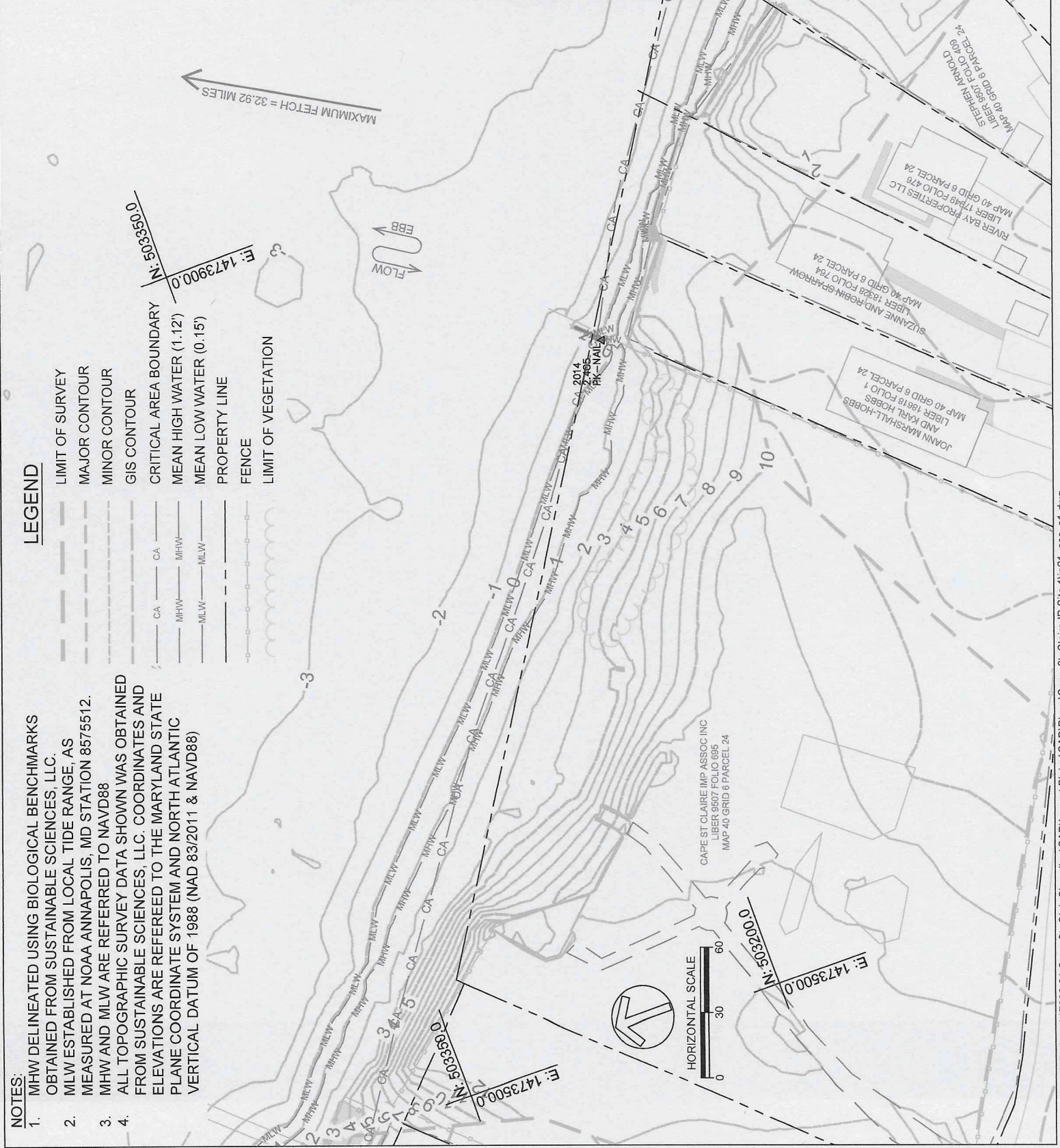
PROJECT NO.: 17023.01

SCALE: 1" = 60'

BY: AM, TB
 CHECK: EM

DWG. NO.: 3 OF 10

MATCHLINE - SHEET 4



CAPE ST CLAIRE IMPROVEMENT ASSOCIATION
 1223 RIVER BAY ROAD
 ANNAPOLIS, MD 21409

DATE ISSUES/ REVISIONS
 12/21/2018 INITIAL SUBMITTAL
 04/01/2019 PRE-FINAL SUBMITTAL
 01/23/2020 FINAL SUBMITTAL
 04/27/2020 REVISIONS SUBMITTAL

18441101
 163289
 1.23.20

Biohabitats
 The Stables Building 2081 Clipper Park Road
 Baltimore, MD 21211 / ph: 410.554.0156
 fx: 410.554.0168 / www.biohabitats.com
Restoring the Earth's Ecological Sustainability

SUSTAINABLE SCIENCE LLC

410 South Second St. Denton, MD 21629
 ph: 4109244316
 http://www.sustainable-science.com

CAPE ST. CLAIRE SHORELINE ENHANCEMENT - MAIN BEACH

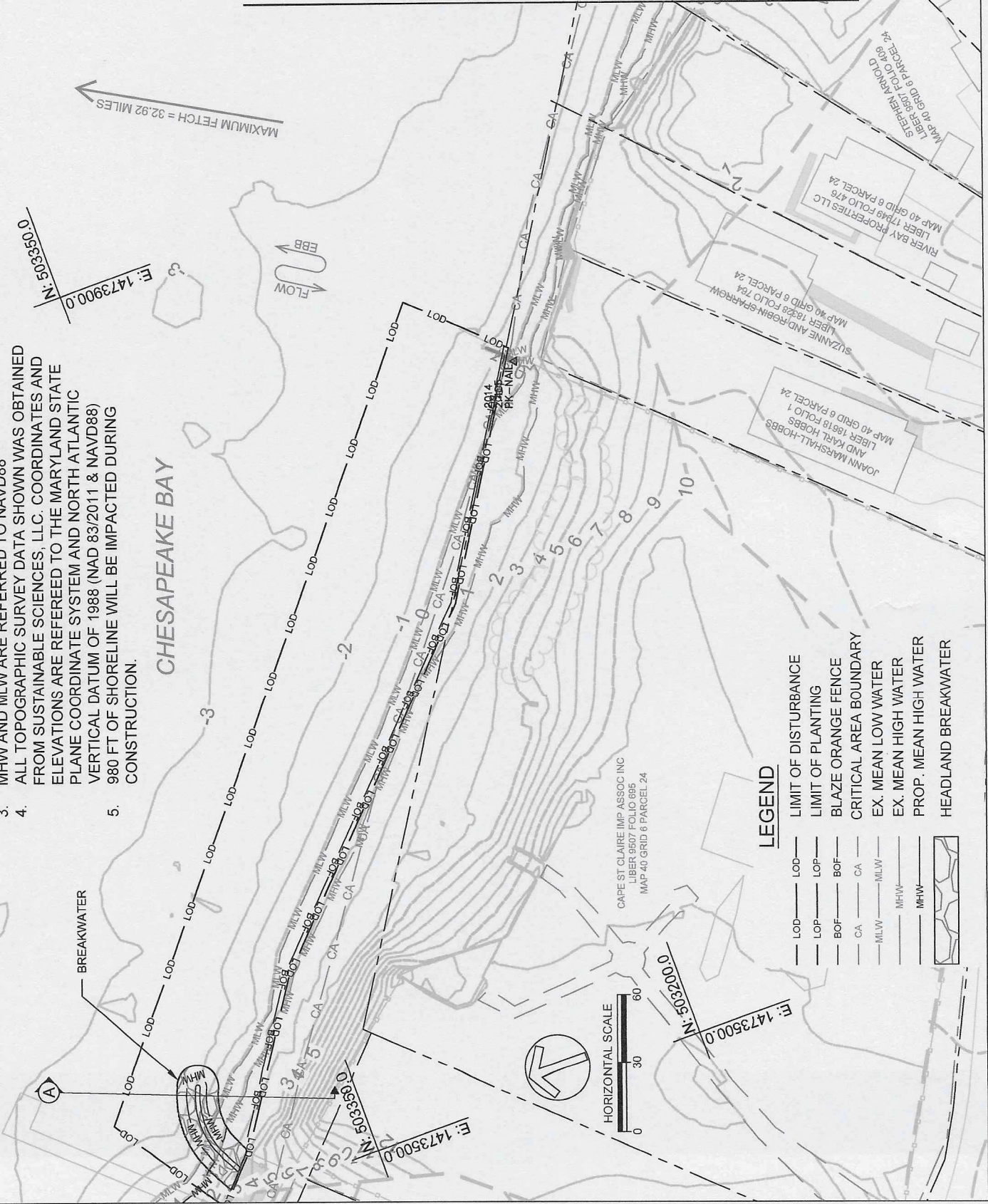
TITLE:	PROPOSED CONDITIONS
PROJECT NO.:	17023.01
SCALE:	1" = 60'
BY:	CHECK
AM, TB	EM
DWG. NO.:	5 OF 10

MATCHLINE - SHEET 6

- NOTES:**
- MHW DELINEATED USING BIOLOGICAL BENCHMARKS OBTAINED FROM SUSTAINABLE SCIENCES, LLC.
 - MLW ESTABLISHED FROM LOCAL TIDE RANGE, AS MEASURED AT NOAA ANNAPOLIS, MD STATION 8575512.
 - MHW AND MLW ARE REFERRED TO NAVD88
 - ALL TOPOGRAPHIC SURVEY DATA SHOWN WAS OBTAINED FROM SUSTAINABLE SCIENCES, LLC. COORDINATES AND ELEVATIONS ARE REFERRED TO THE MARYLAND STATE PLANE COORDINATE SYSTEM AND NORTH ATLANTIC VERTICAL DATUM OF 1988 (NAD 83/2011 & NAVD88)
 - 980 FT OF SHORELINE WILL BE IMPACTED DURING CONSTRUCTION.

MAXIMUM FETCH = 32.92 MILES

E: 1473900.0
 N: 5033350.0



CAPE ST CLAIRE IMPROVEMENT ASSOCIATION
 1223 RIVER BAY ROAD
 ANNAPOLIS, MD 21409

DATE ISSUES / REVISIONS
 12/21/2018 INITIAL SUBMITTAL
 04/01/2019 PRE-FINAL SUBMITTAL
 01/23/2020 FINAL SUBMITTAL
 04/27/2020 REVISIONS SUBMITTAL

18 W/L 1181
 163289
 1.23.20

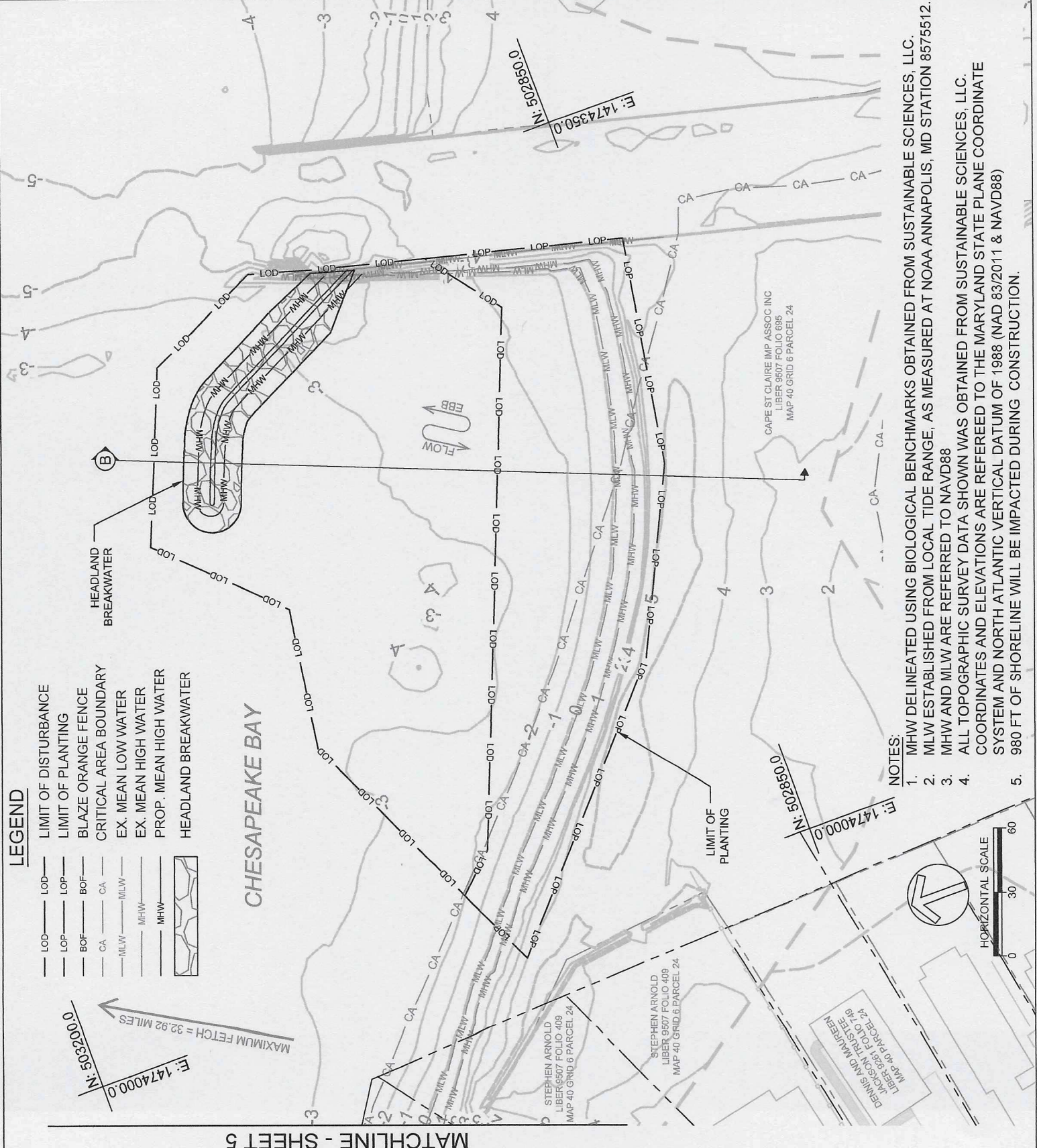
Biohabitats
 The Stables Building 2081 Clipper Park Road
 Baltimore, MD 21211 / ph: 410.554.0156
 fx: 410.554.0168 / www.biohabitats.com
Restores the Earth & Inspires Ecological Stewardship

SUSTAINABLE SCIENCE LLC
 410 South Second St. Denton, MD 21629
 ph: 410.924.4316
 http://www.sustainable-science.com

CAPE ST. CLAIRE SHORELINE ENHANCEMENT - MAIN BEACH

TITLE: PROPOSED CONDITIONS
 PROJECT NO.: 17023.01
 SCALE: 1" = 60'

BY: AM, TB
 CHECK: EM
 DWG. NO.: 6 OF 10



LEGEND

- LOD ——— LIMIT OF DISTURBANCE
- LOP ——— LIMIT OF PLANTING
- BOF ——— BLAZE ORANGE FENCE
- CA ——— CRITICAL AREA BOUNDARY
- MLW ——— EX. MEAN LOW WATER
- MHW ——— EX. MEAN HIGH WATER
- Prop. MHW ——— PROP. MEAN HIGH WATER
- Headland Breakwater ——— HEADLAND BREAKWATER

NOTES:

1. MHW DELINEATED USING BIOLOGICAL BENCHMARKS OBTAINED FROM SUSTAINABLE SCIENCES, LLC.
2. MLW ESTABLISHED FROM LOCAL TIDE RANGE, AS MEASURED AT NOAA ANNAPOLIS, MD STATION 8575512.
3. MHW AND MLW ARE REFERRED TO NAVD88
4. ALL TOPOGRAPHIC SURVEY DATA SHOWN WAS OBTAINED FROM SUSTAINABLE SCIENCES, LLC. COORDINATES AND ELEVATIONS ARE REFERRED TO THE MARYLAND STATE PLANE COORDINATE SYSTEM AND NORTH ATLANTIC VERTICAL DATUM OF 1988 (NAD 83/2011 & NAVD88)
5. 980 FT OF SHORELINE WILL BE IMPACTED DURING CONSTRUCTION.

MATCHLINE - SHEET 5

CAPE ST CLAIRE IMPROVEMENT ASSOCIATION
 1223 RIVER BAY ROAD
 ANNAPOLIS, MD 21409

ISSUES / REVISIONS
 12/21/2018 INITIAL SUBMITTAL
 04/01/2019 PRE-FINAL SUBMITTAL
 01/23/2020 FINAL SUBMITTAL
 04/27/2020 REVISIONS SUBMITTAL

19 WL 1181
 663 289
 1-23-20

Biohabitats
 The Stables Building 2081 Clipper Park Road
 Baltimore, MD 21211 / ph: 410.554.0156
 Ex: 410.554.0168 / www.biohabitats.com
Restores the Earth & Inspires Ecological Sustainability

SUSTAINABLE SCIENCE LLC
 410 South Second St. Denton, MD 21629
 ph: 410.924.4316
 http://www.sustainable-science.com

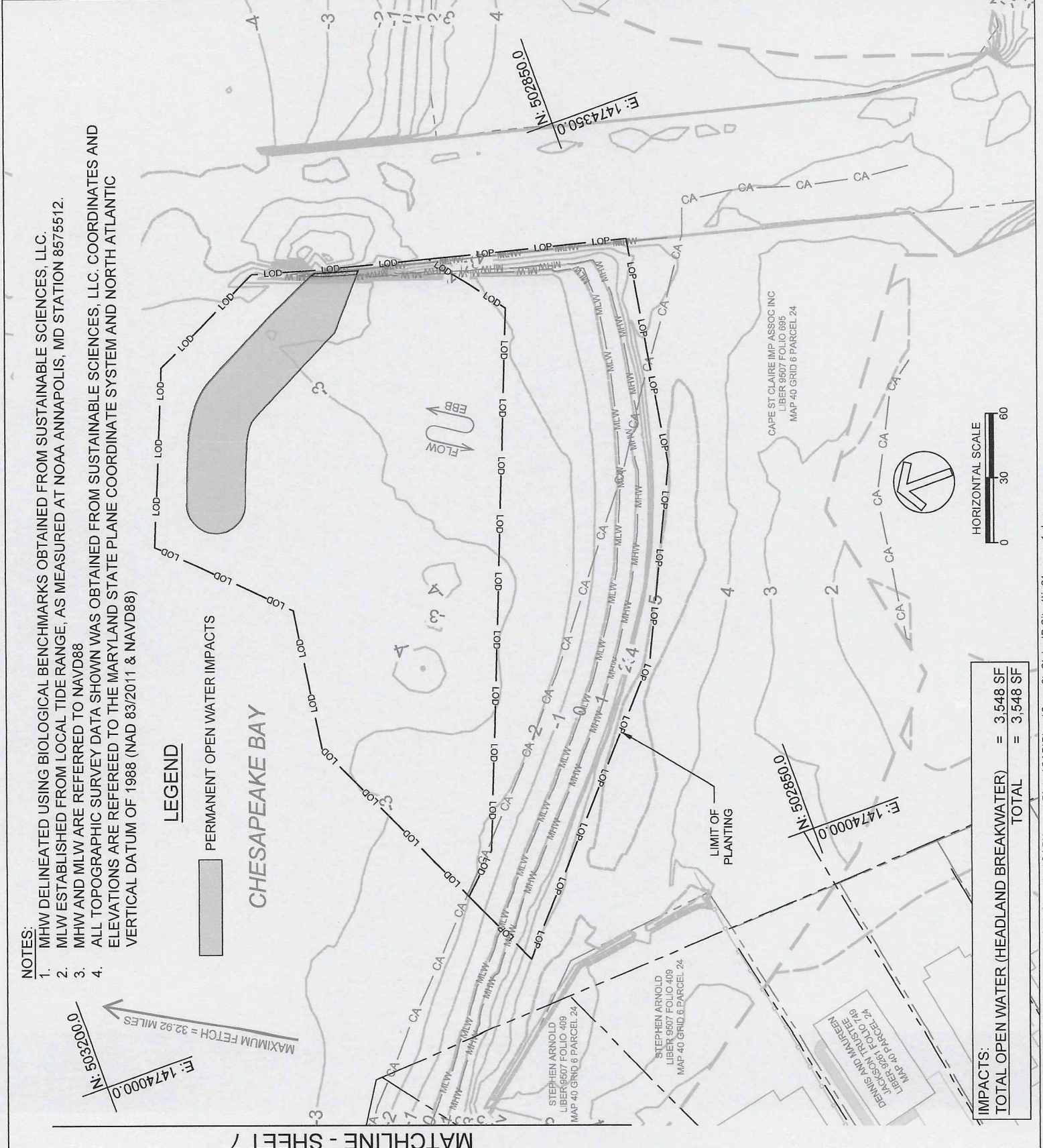
CAPE ST. CLAIRE SHORELINE ENHANCEMENT - MAIN BEACH

TITLE: IMPACT PLATES
 PROJECT NO.: 17023.01

SCALE: 1" = 60'

BY: AM, TB
 CHECK: EM

DWG. NO.: 8 OF 10



NOTES:
 1. MHW DELINEATED USING BIOLOGICAL BENCHMARKS OBTAINED FROM SUSTAINABLE SCIENCES, LLC.
 2. MLW ESTABLISHED FROM LOCAL TIDE RANGE, AS MEASURED AT NOAA ANNAPOLIS, MD STATION 8575512.
 3. MHW AND MLW ARE REFERRED TO NAVD88
 4. ALL TOPOGRAPHIC SURVEY DATA SHOWN WAS OBTAINED FROM SUSTAINABLE SCIENCES, LLC. COORDINATES AND ELEVATIONS ARE REFERRED TO THE MARYLAND STATE PLANE COORDINATE SYSTEM AND NORTH ATLANTIC VERTICAL DATUM OF 1988 (NAD 83/2011 & NAVD88)

LEGEND
 PERMANENT OPEN WATER IMPACTS

IMPACTS:

TOTAL OPEN WATER (HEADLAND BREAKWATER)	= 3,548 SF
TOTAL	= 3,548 SF

MATCHLINE - SHEET 7

CAPE ST CLAIRE IMPROVEMENT
ASSOCIATION
1223 RIVER BAY ROAD
ANNAPOLIS, MD 21409

DATE	ISSUES / REVISIONS
12/21/2018	INITIAL SUBMITTAL
04/01/2019	PRE-FINAL SUBMITTAL
01/23/2020	FINAL SUBMITTAL
04/27/2020	REVISIONS SUBMITTAL

18461181
163289
1.23.20

Biohabitats
The Stables Building, 2081 Clipper Park Road
Baltimore, MD 21211 / ph: 410.554.0156
Ex: 410.554.0168 / www.biohabitats.com
Restoring the Earth's Intrinsic Ecological Stewardship

**SUSTAINABLE
SCIENCE LLC**

410 South Second St. Denton, MD 21629
ph: 410.924.4316
http://www.sustainable-science.com

CAPE ST. CLAIRE
SHORELINE
ENHANCEMENT -
MAIN BEACH

TITLE: CROSS SECTIONS

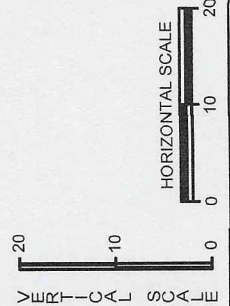
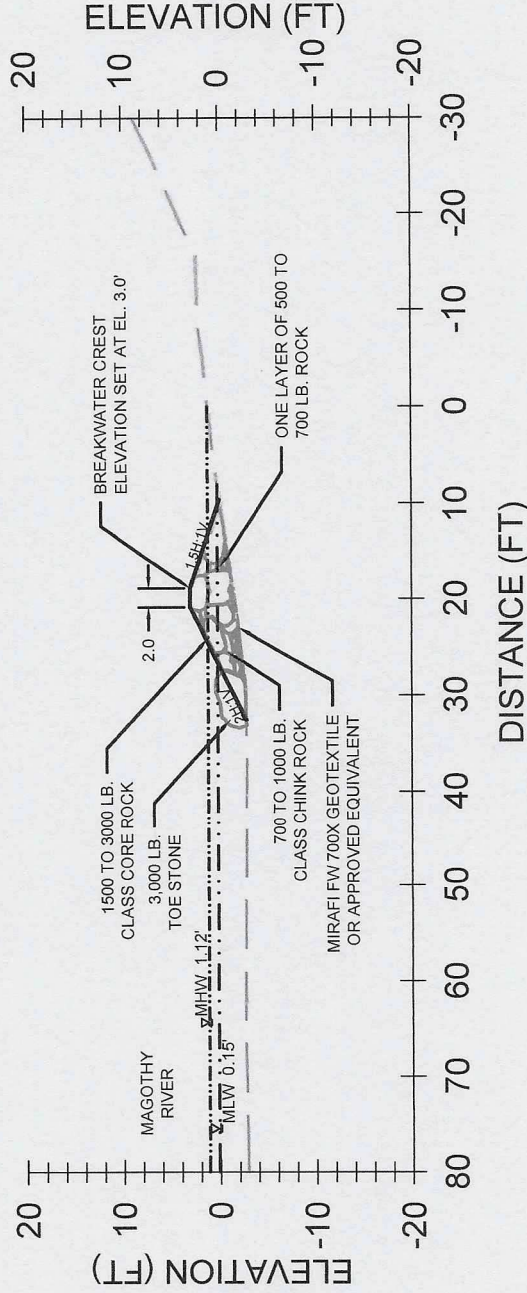
PROJECT NO.: 17023.01

SCALE: AS SHOWN

BY: AM, TB
CHECK: EM

DWG. NO.: 9 OF 10

SECTION A - BREAKWATER



CAPE ST. CLAIRE IMPROVEMENT ASSOCIATION
 1223 RIVER BAY ROAD
 ANNAPOLIS, MD 21409

DATE ISSUES / REVISIONS
 12/21/2018 INITIAL SUBMITTAL
 04/01/2019 PRE-FINAL SUBMITTAL
 01/29/2020 FINAL SUBMITTAL
 04/27/2020 REVISIONS SUBMITTAL

18461181
 163289
 1.23.20

Biohabitats
 The Stables Building, 2081 Clipper Park Road
 Baltimore, MD 21211 / ph: 410.554.0156
 fx: 410.554.0168 / www.biohabitats.com
 Restore the Earth & Inspire Ecological Stewardship

SUSTAINABLE SCIENCE LLC
 410 South Second St. Denton, MD 21629
 ph: 410.924.4316
 http://www.sustainable-science.com

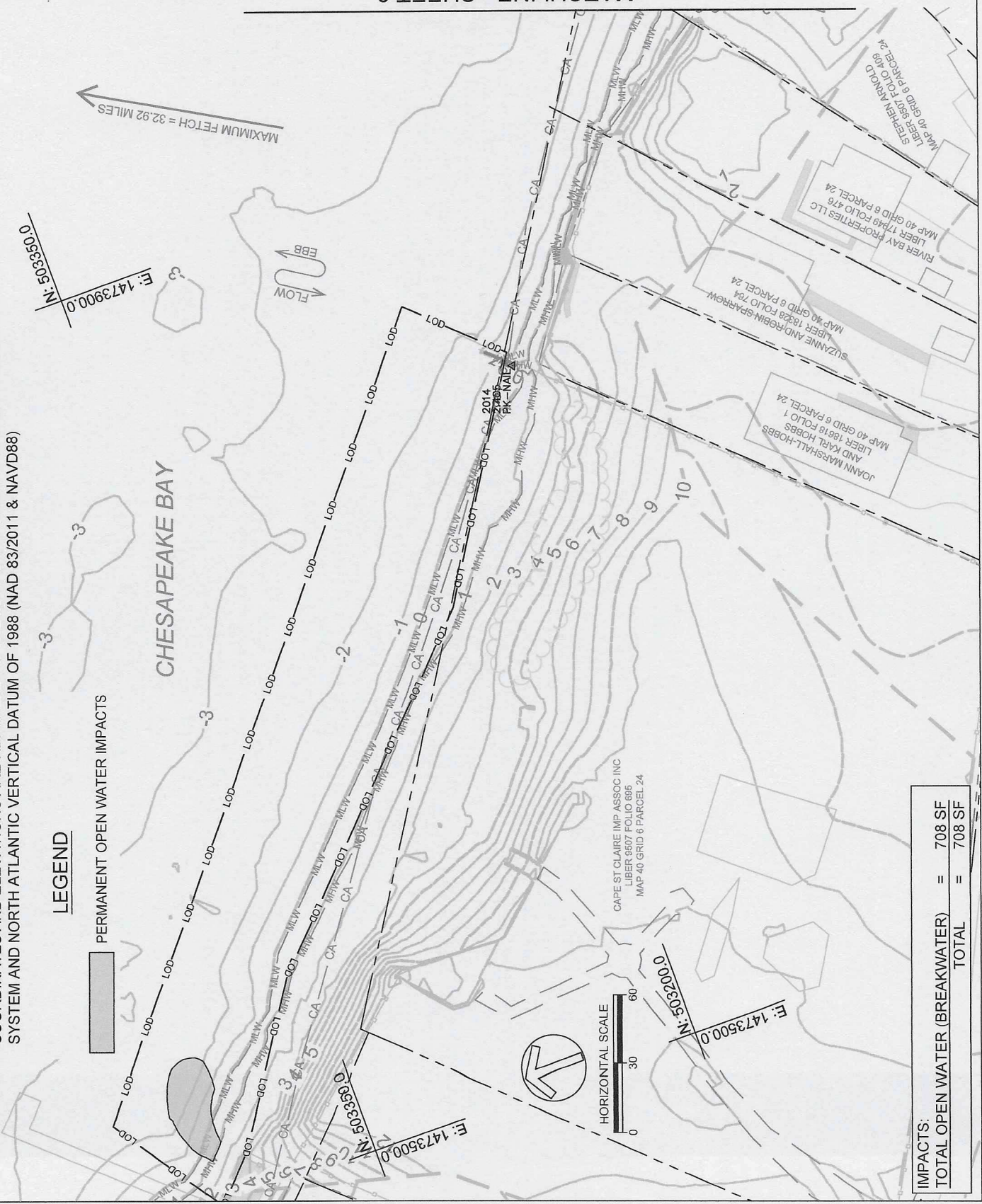
CAPE ST. CLAIRE SHORELINE ENHANCEMENT - MAIN BEACH

TITLE: IMPACT PLATES
 PROJECT NO.: 17023.01
 SCALE: 1" = 60'
 BY: AM, TB CHECK: EM
 DWG. NO.: 7 OF 10

- NOTES:**
- MHW DELINEATED USING BIOLOGICAL BENCHMARKS OBTAINED FROM SUSTAINABLE SCIENCES, LLC.
 - MLW ESTABLISHED FROM LOCAL TIDE RANGE, AS MEASURED AT NOAA ANNAPOLIS, MD STATION 8575512.
 - MHW AND MLW ARE REFERRED TO NAVD88
 - ALL TOPOGRAPHIC SURVEY DATA SHOWN WAS OBTAINED FROM SUSTAINABLE SCIENCES, LLC. COORDINATES AND ELEVATIONS ARE REFERRED TO THE MARYLAND STATE PLANE COORDINATE SYSTEM AND NORTH ATLANTIC VERTICAL DATUM OF 1988 (NAD 83/2011 & NAVD88)

LEGEND

PERMANENT OPEN WATER IMPACTS



IMPACTS:

TOTAL OPEN WATER (BREAKWATER)	= 708 SF
TOTAL	= 708 SF

MATCHLINE - SHEET 8

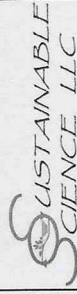
CAPE ST. CLAIRE IMPROVEMENT ASSOCIATION
1223 RIVER BAY ROAD
ANNAPOLIS, MD 21409

DATE	ISSUES / REVISIONS
12/21/2018	INITIAL SUBMITTAL
04/01/2019	PRE-FINAL SUBMITTAL
01/23/2020	FINAL SUBMITTAL
04/27/2020	REVISIONS SUBMITTAL

18 WL 1181
163289
1.23.25



The Stables Building, 2081 Clipper Park Road
Baltimore, MD 21211 / ph: 410.554.0156
fx: 410.554.0168 / www.biohabitats.com
Restoring the Earth's Intrinsic Ecological Stewardship



410 South Second St. Denton, MD 21629
ph: 410.922.44316
http://www.sustainable-science.com

CAPE ST. CLAIRE SHORELINE ENHANCEMENT - MAIN BEACH

TITLE: CROSS SECTIONS

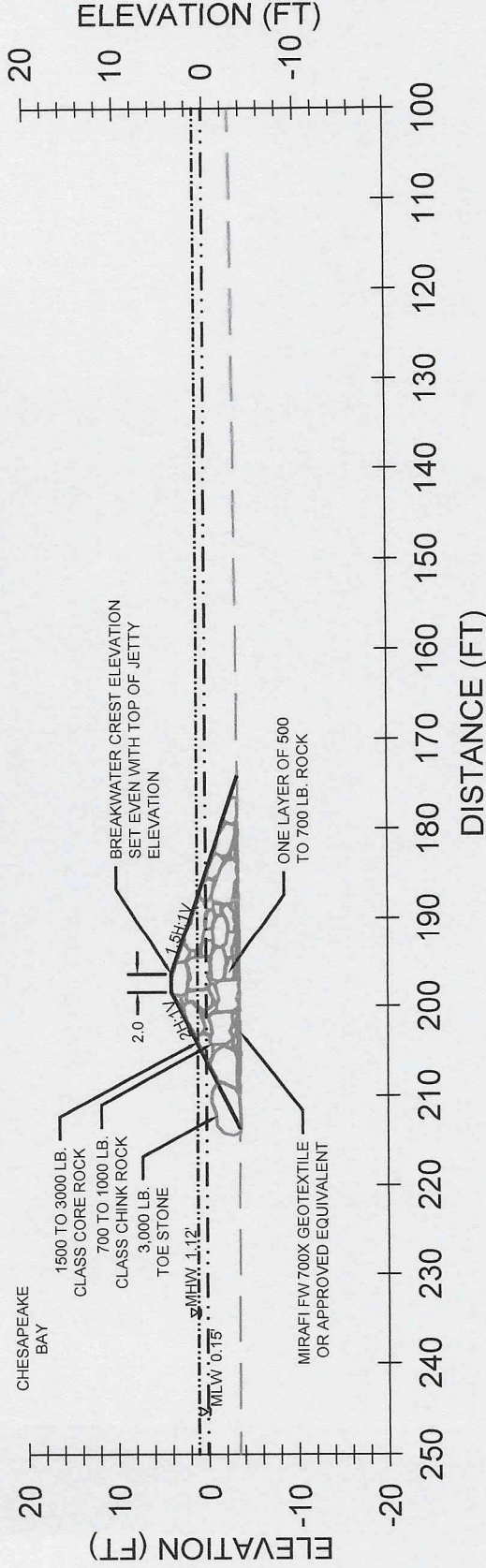
PROJECT NO.: 17023.01

SCALE: AS SHOWN

BY: AM, TB
CHECK: EM

DWG. NO.: 10 OF 10

SECTION B - HEADLAND BREAKWATER



SECTION B - HEADLAND BREAKWATER

