

Temporary Tidal Waters Impacts	
Sheet 3	3.10 Acres
Sheet 4	2.41 Acres
Sheet 5	2.76 Acres
Temporary Piles	0.02 Acres
Geotechnical Borings	0.05 Acres
Total	8.34 Acres

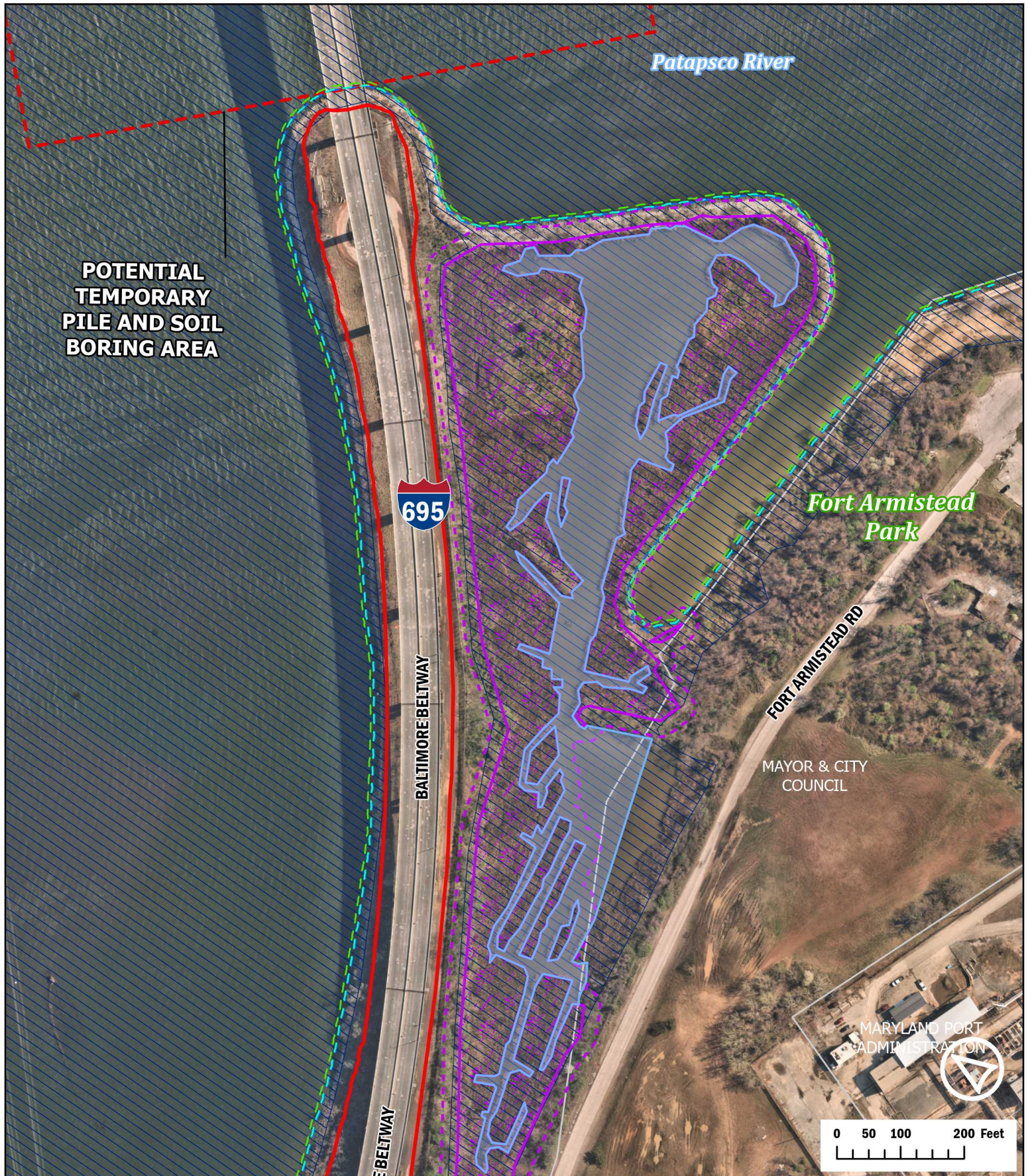
Note: No Impacts on Sheets 1, 2, 6

- | | |
|-------------------------------|----------------------|
| Limits of Disturbance | Approximate MLW Line |
| Potential Temporary Pile Area | MHHW Line |
| Streams | MHW Line |
| Wetlands | Property Parcels |
| 25ft Wetland Buffer | Municipal Boundaries |
| 100-Year Floodplain | |



**Francis Scott Key
Bridge
Demolition
Impact Plates**

Page 1 of 6 July 2024



**POTENTIAL
TEMPORARY
PILE AND SOIL
BORING AREA**

Patapsco River

695

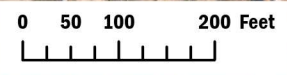
BALTIMORE BELTWAY

*Fort Armistead
Park*

FORT ARMISTEAD RD

MAYOR & CITY
COUNCIL

MARYLAND PORT
ADMINISTRATION

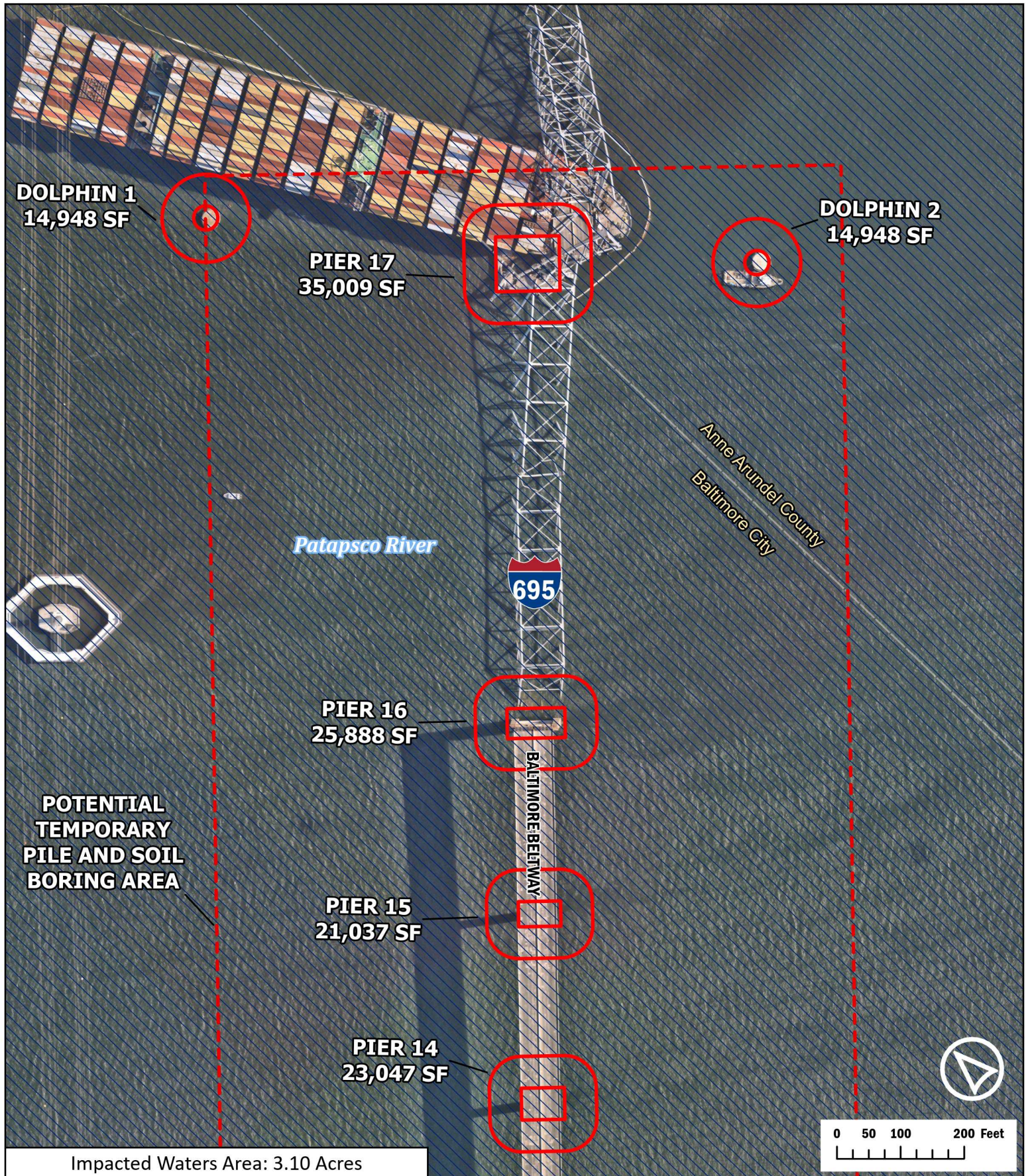


- Limits of Disturbance
- Potential Temporary Pile Area
- Streams
- Wetlands
- 25ft Wetland Buffer
- 100-Year Floodplain
- Approximate MLW Line
- MHHW Line
- MHW Line
- Property Parcels
- Municipal Boundaries



**Francis Scott Key
Bridge
Demolition
Impact Plates**

Page 2 of 6 July 2024



DOLPHIN 1
14,948 SF

DOLPHIN 2
14,948 SF

PIER 17
35,009 SF

Patapsco River

Anne Arundel County
Baltimore City



PIER 16
25,888 SF

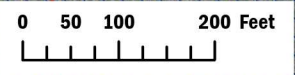
**POTENTIAL
TEMPORARY
PILE AND SOIL
BORING AREA**

BALTIMORE BELTWAY

PIER 15
21,037 SF

PIER 14
23,047 SF

Impacted Waters Area: 3.10 Acres

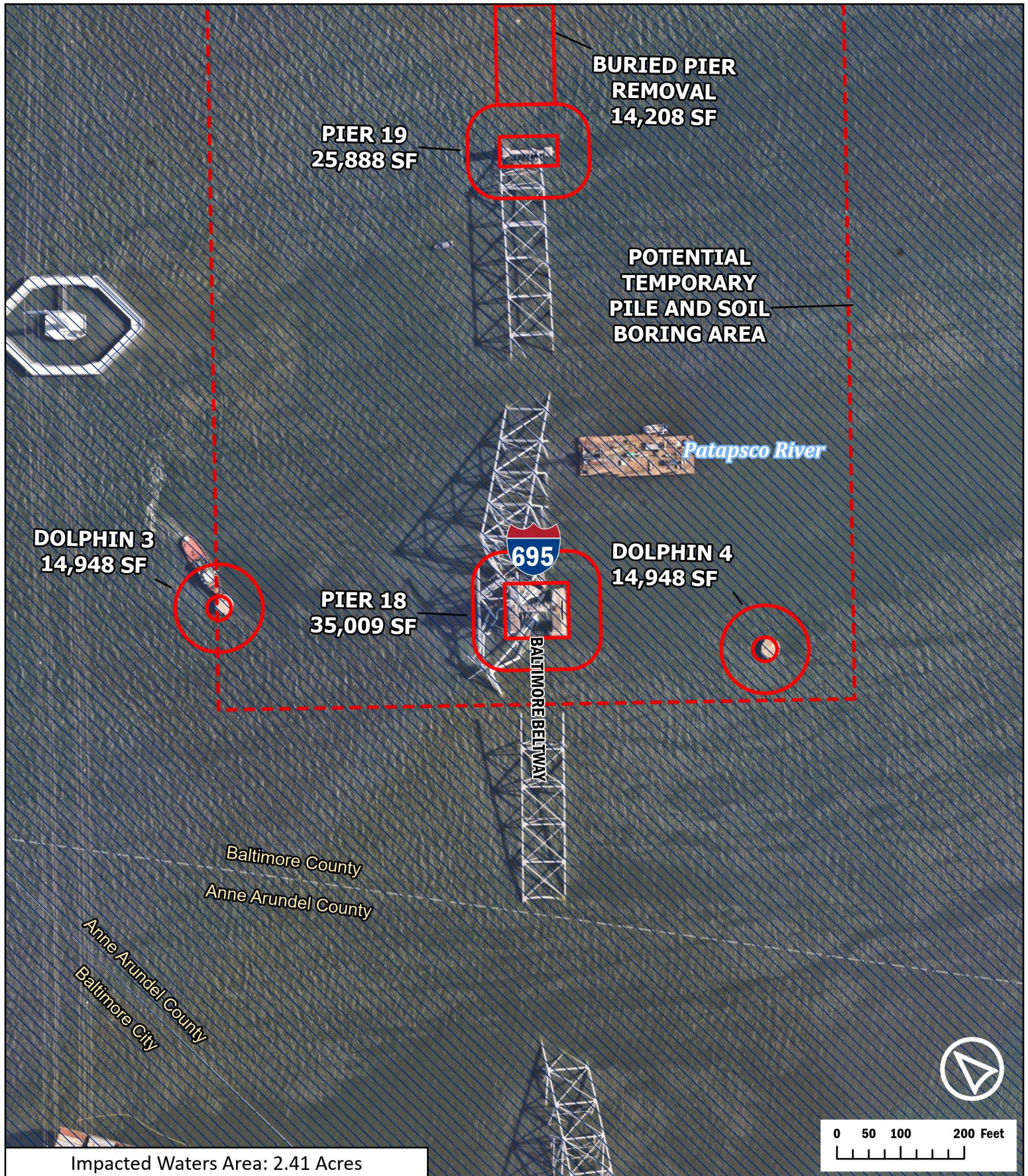


- Limits of Disturbance
- Potential Temporary Pile Area
- Streams
- Wetlands
- 25ft Wetland Buffer
- 100-Year Floodplain
- Approximate MLW Line
- MHHW Line
- MHW Line
- Property Parcels
- Municipal Boundaries



**Francis Scott Key
Bridge
Demolition
Impact Plates**

Page 3 of 6 July 2024



Impacted Waters Area: 2.41 Acres

- Limits of Disturbance
- Potential Temporary Pile Area
- Streams
- Wetlands
- 25ft Wetland Buffer
- 100-Year Floodplain
- Approximate MLW Line
- MHHW Line
- MHW Line
- Property Parcels
- Municipal Boundaries

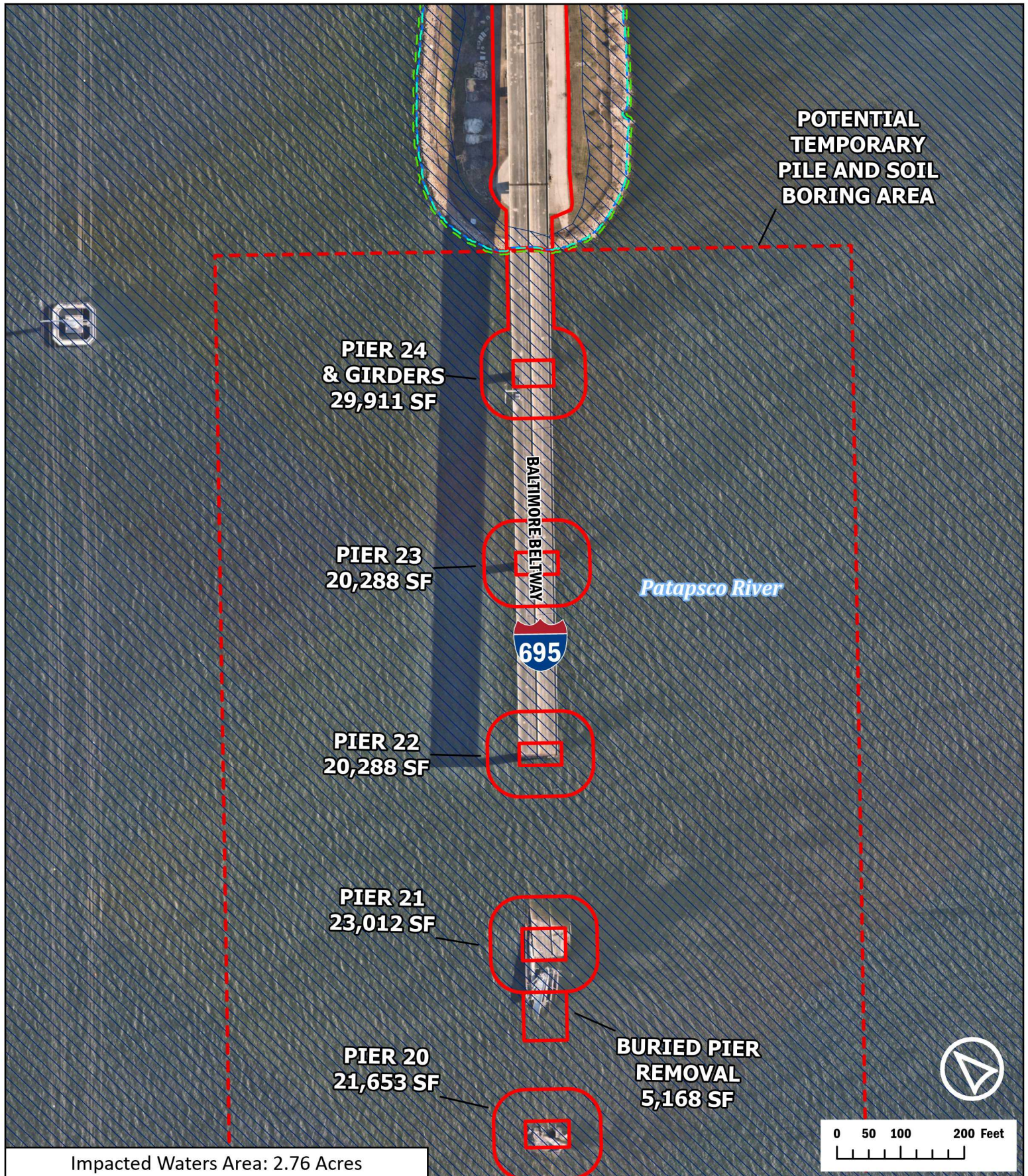



 Maryland
Transportation
Authority


 MDT
 MARYLAND DEPARTMENT
OF TRANSPORTATION
STATE HIGHWAY
ADMINISTRATION

Francis Scott Key Bridge Demolition Impact Plates

Page 4 of 6 July 2024



Impacted Waters Area: 2.76 Acres

- | | |
|-------------------------------|----------------------|
| Limits of Disturbance | Approximate MLW Line |
| Potential Temporary Pile Area | MHHW Line |
| Streams | MHW Line |
| Wetlands | Property Parcels |
| 25ft Wetland Buffer | Municipal Boundaries |
| 100-Year Floodplain | |



Maryland
Transportation
Authority



STATE HIGHWAY
ADMINISTRATION

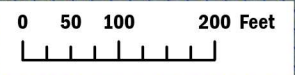
**Francis Scott Key
Bridge
Demolition
Impact Plates**

Patapsco River

AUTHORITY DR



BALTIMORE BELTWAY



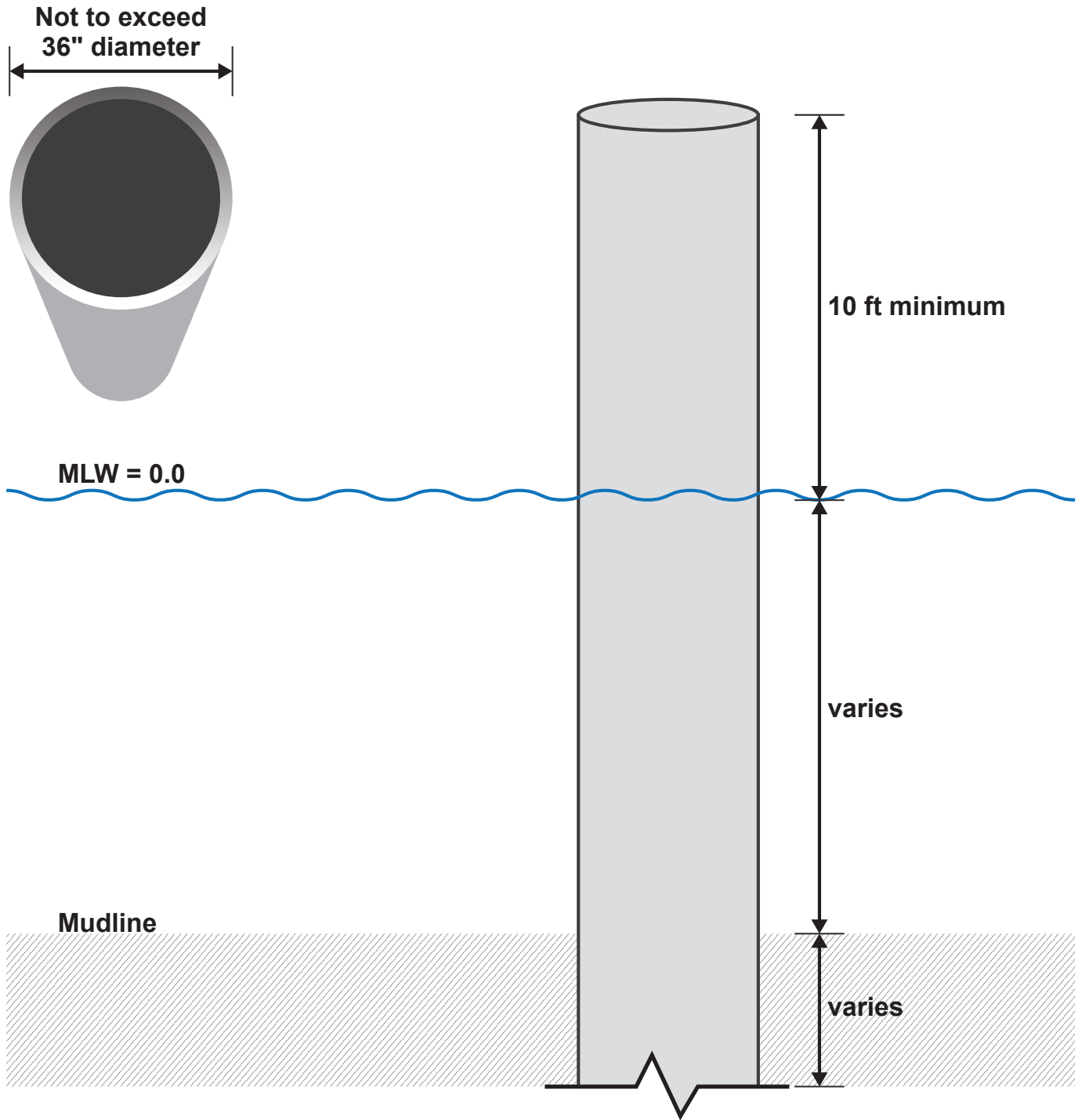
- Limits of Disturbance
- Potential Temporary Pile Area
- Streams
- Wetlands
- 25ft Wetland Buffer
- 100-Year Floodplain
- Approximate MLW Line
- MHHW Line
- MHW Line
- Property Parcels
- Municipal Boundaries



**Francis Scott Key
Bridge
Demolition
Impact Plates**

Page 6 of 6 July 2024

Temporary Pile Typical Section

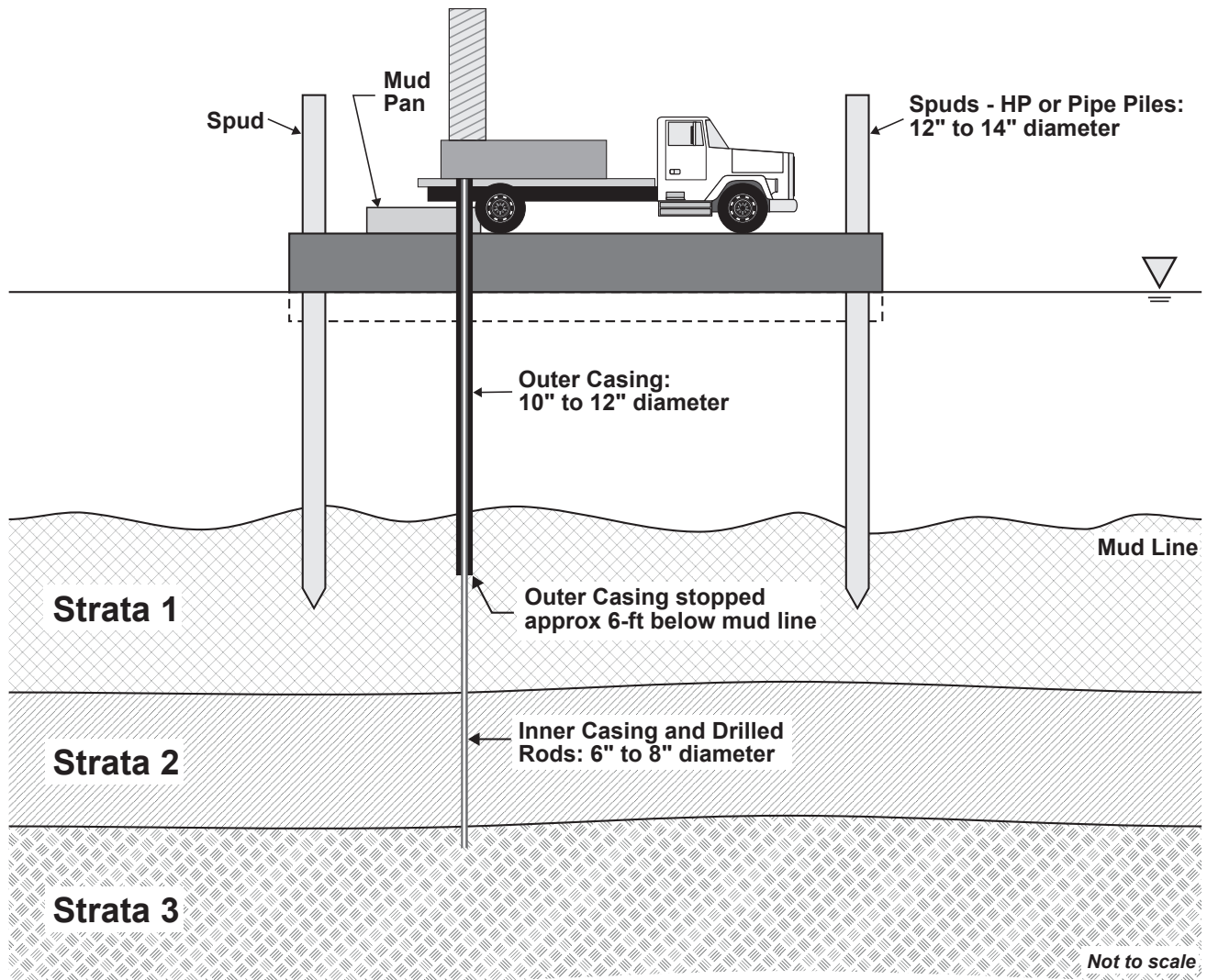


**Francis Scott Key Bridge
Rebuild Project
Demolition Plan**

July 2024

Not to scale

Subsurface Exploration Cross-Section - Geotechnical Boring



33 sq. ft. impact/boring
Total impact not to exceed 1,980 sq. ft. (60 borings)

Note: The subsurface exploration work will be conducted with a barge mounted drill rig to obtain Standard Penetration Test (SPT) samples. The field crew will install an outer casing below the mudline to seat the borehole. Drill rods and inner casing will be run through the outer casing to obtain soil samples. Spuds on the four corners of the barge will be used to keep the barge in position. A mud pan will be used to minimize sedimentation in the river.



Maryland
Transportation
Authority

**Francis Scott Key Bridge
Demolition**
Preliminary Engineering
July 2024