

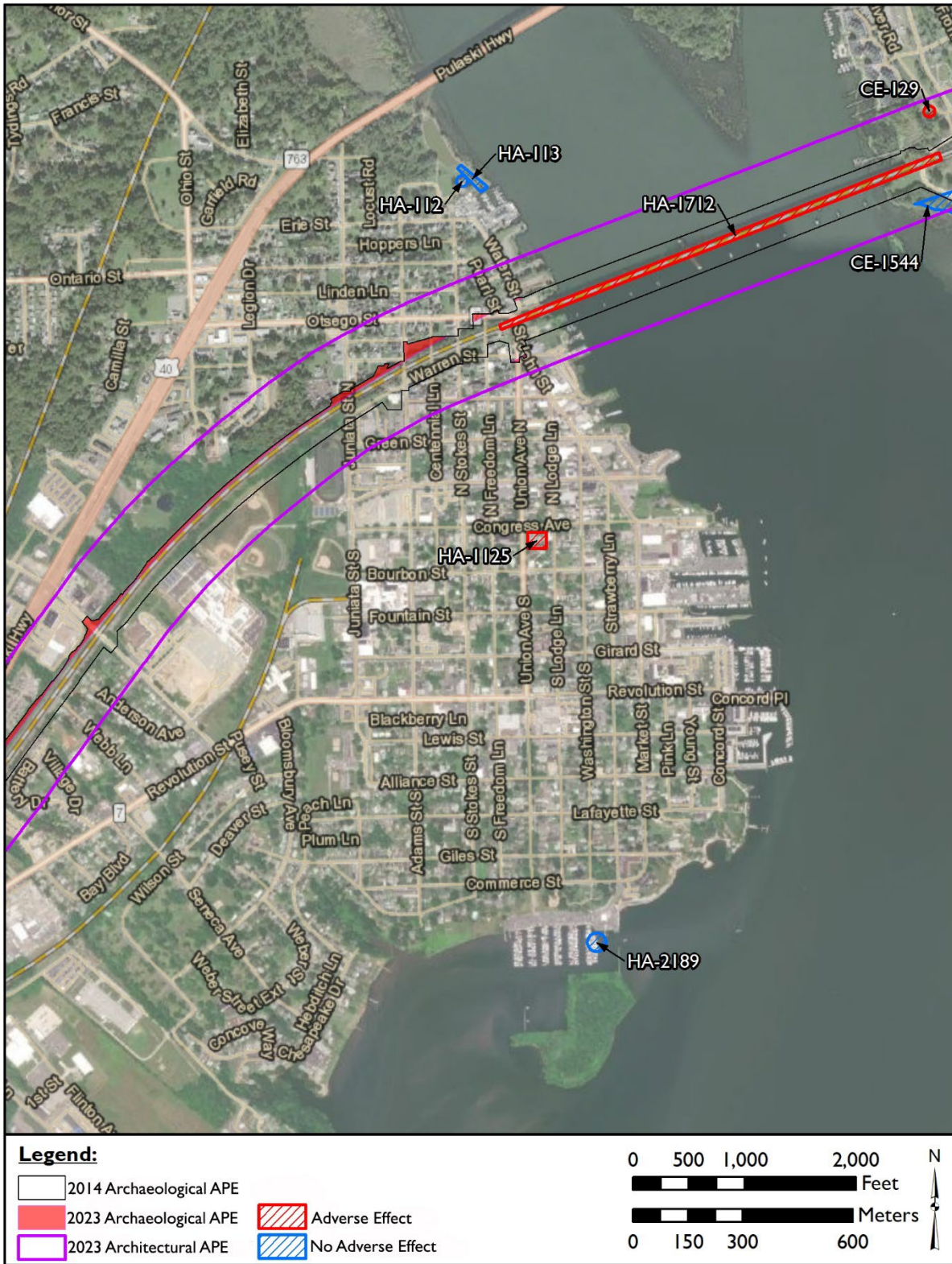
ROSTER OF HISTORIC PROPERTIES

As of February 28, 2023; Adverse Effects Are Listed in **BLUE**

MIHP/ Site #	Name	Location	Eligibility	Effect	Comments
HA-1125	Havre de Grace HD	Havre de Grace/ Harford Co	Listed/A&C	Adverse	
HA-112; HA-113	Southern Terminus, Susquehanna and Tidewater Canal – South lock #1 and Toll House	Havre de Grace/ Harford Co	Listed/A&C	No Adverse Effect	Note there is an MHT easement on this property
HA-2189	Martha Lewis (skipjack)	Havre de Grace/ Harford Co	Listed/A&C	No Adverse Effect	
CE-129	Rodgers Tavern	Perryville/ Cecil Co	Listed/A&C	Adverse	
CE-112	Principio Furnace (Principio Iron Works)	Cecil Co	Listed/A&D	No Adverse Effect	
CE-146; CE-244	Perry Point Mansion House and Mill	Perryville/ Cecil Co	Listed/A&C	No Adverse Effect	
CE-1442	Perryville Railroad Station	Perryville/ Cecil Co	Eligible/A&C	Adverse	Includes Station, the Perryville Railroad Station Undergrade Bridge at Milepost 59.39, and the Perryville Interlocking Tower
HA-1712	Susquehanna River Rail Bridge and Overpasses	Harford Co	Eligible/A&C	Adverse	The undergrade bridges at MP 60.51, 60.56, 60.61, and 60.69 contribute to the Havre de Grace Historic District; the undergrade bridge at MP 59.39 contributes to the Perryville Railroad Station complex
CE-1544	Perry Point Veterans Administration (VA) Medical Center Historic District	Cecil Co	Eligible/A&C	No Adverse Effect	
CE-1566	Crothers House (Furnace Bay Golf Course Clubhouse)	Cecil Co	Eligible/C	No Adverse Effect	
CE-145	Woodlands Farm Historic District	Cecil Co	Eligible/A&C	No Adverse Effect	
CE-1573	Perryville United Methodist Church	Cecil Co	Eligible/A&C	No Adverse Effect	
CE-1574	Perryville Presbyterian Church	Cecil Co	Eligible/A&C	No Adverse Effect	



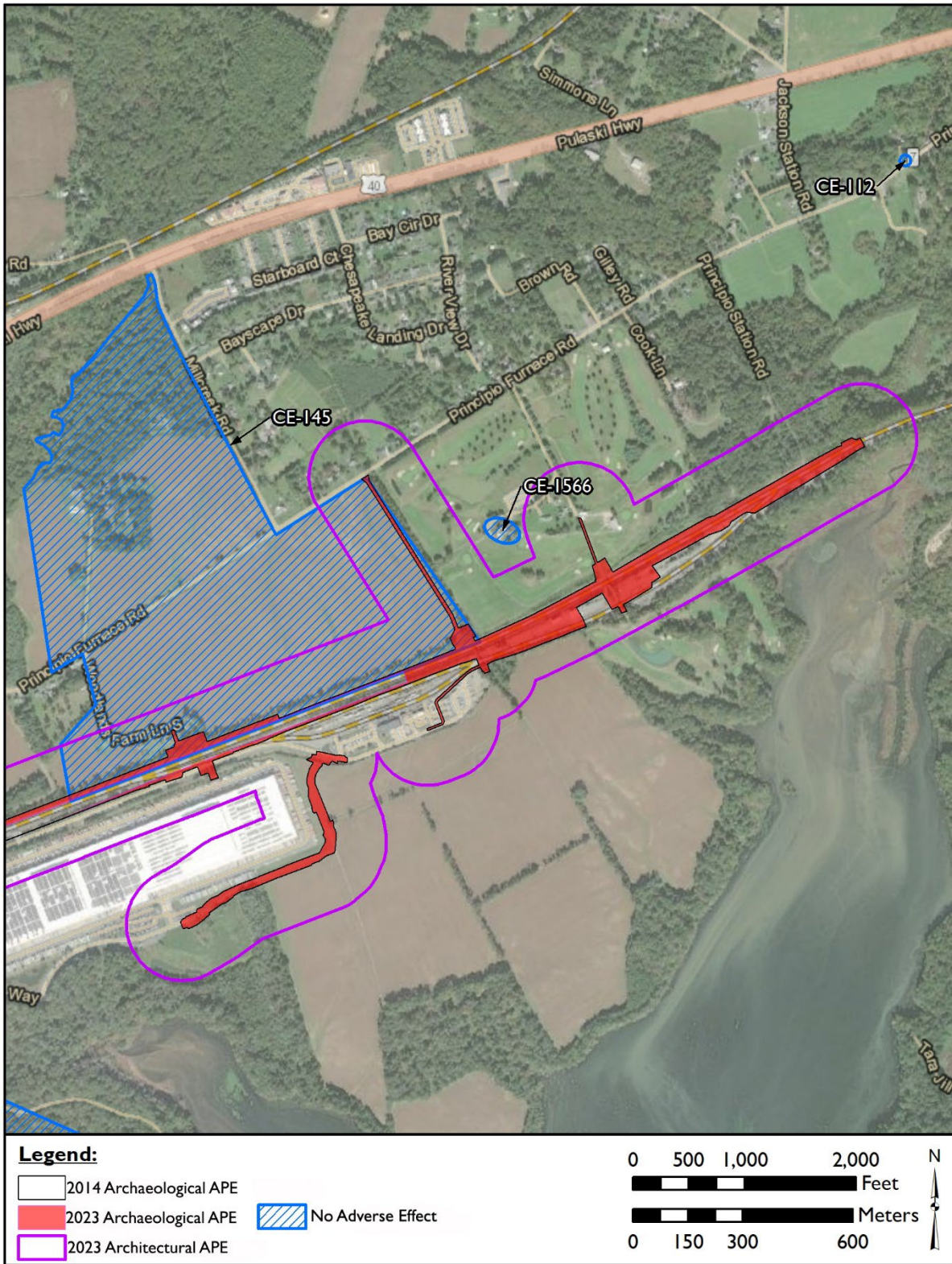
Overview Map Showing Locations of Historic Properties.



Detailed Location Map Showing Historic Properties, Map 1 of 3 (West to East).



Detailed Location Map Showing Historic Properties, Map 2 of 3 (West to East).



Detailed Location Map Showing Historic Properties, Map 3 of 3 (West to East).