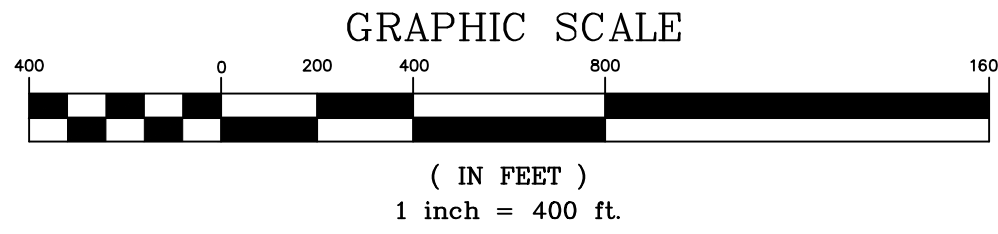
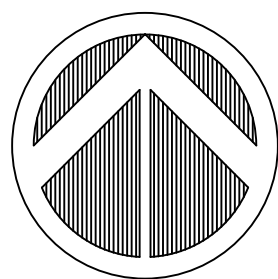
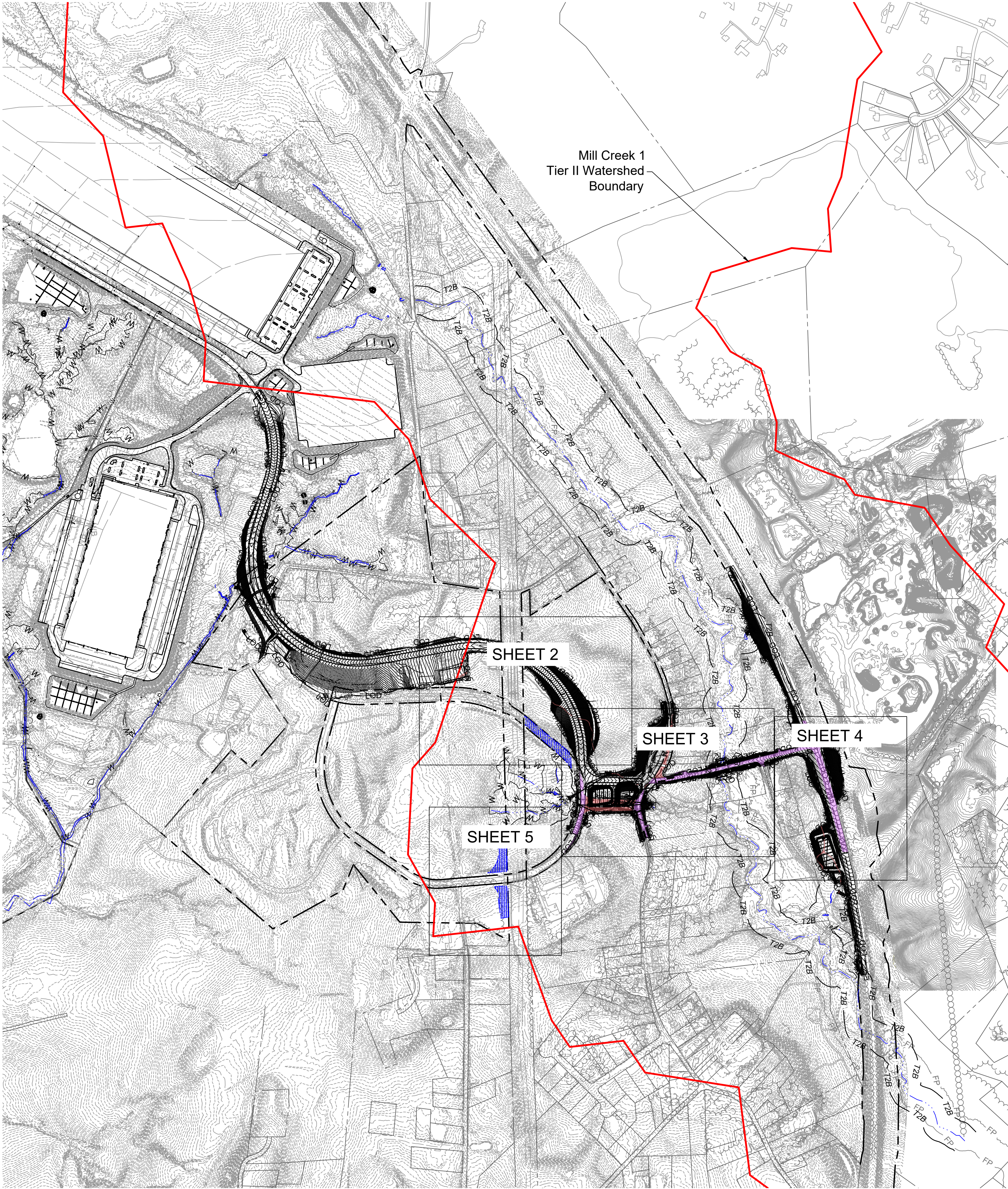


L:\36008\36008\36070\01\CADD\07-REGS\Tier II Mitigation.dwg 1 Plotted By: Haley Kelly, 9/23/2025 10:03 AM



INTRODUCTION

**A. PROJECT SUMMARY**  
THE BAINBRIDGE DEVELOPMENT CORPORATION (BDC) IS PROPOSING TO EXTEND POWERS ROAD THROUGH A CURRENTLY VACANT PORTION OF LAND OWNED BY BDC, REDEVELOP THE EXISTING DIAMOND JIM ROAD FROM ITS INTERSECTION WITH PERRYLAWN DRIVE (MD ROUTE 275) WEST TO ITS INTERSECTION WITH CRAIGTOWN ROAD, AND EXTEND DIAMOND JIM ROAD TO THE PROPOSED POWERS ROAD EXTENSION IN CECIL COUNTY, MARYLAND. THE TOTAL LIMIT OF DISTURBANCE IS 33.5 ACRES FOR ROAD IMPROVEMENTS, STORMWATER MANAGEMENT, AND STORM DRAIN INSTALLATION; HOWEVER, ONLY 19.26 ACRES OF THE PROJECT ARE WITHIN THE MILL CREEK 1 TIER II WATERSHED. THE PROJECT IS IN A COMMERCIAL CORRIDOR THAT INCLUDES A VARIETY OF USES, INCLUDING RETAIL, INDUSTRIAL, AND INSTITUTIONAL USES.

ROAD ALIGNMENTS WERE DESIGNED TO MINIMIZE FOREST CLEARING. THIS SITE IS LOCATED WITHIN A STATE PRIORITY FUNDING AREA, A DESIGNATION THAT ENCOURAGES ECONOMIC INVESTMENT AND JOB CREATION WITHIN UNDERUTILIZED AREAS. ADDITIONALLY, THE FUTURE COMMERCIAL AND RESIDENTIAL DEVELOPMENT OF THIS SITE, WHICH WILL BE SUPPORTED BY THE IMPROVED ROADWAY INFRASTRUCTURE, WILL FURTHER THE ECONOMIC GOALS OF CECIL COUNTY.

**B. PURPOSE OF MITIGATION**  
THE PURPOSE OF THIS MITIGATION IS TO OFFSET REDUCTION IN ON-SITE FOREST AND INCREASES IN ON-SITE IMPERVIOUS SURFACE THAT MAY IMPACT THE HIGH-QUALITY WATERS OF THE MILL CREEK 1 WATERSHED.  
IMPACTS ASSOCIATED WITH THIS PROJECT INCLUDE:  
1. TIER II STREAM BUFFER IMPACTS: 1.97 ACRES  
2. FOREST COVER LOSS: 14.93 ACRES  
3. NEW IMPERVIOUS SURFACE (NO ESD TREATMENT): 0.30 ACRES

**C. DETERMINATION OF CREDITS**  
THIS PLAN OUTLINES THE PROPOSED MITIGATION EFFORTS IDENTIFIED TO OFFSET IMPACTS TO FOREST AND INCREASES IN IMPERVIOUS SURFACES WITHIN THE MILL CREEK 1 WATERSHED.  
1. REFORESTATION: 1.28 ACRES  
2. TREATMENT OF EXISTING IMPERVIOUS SURFACE: 1.98 ACRES  
3. REMOVAL OF UNTREATED IMPERVIOUS SURFACE: 0.90 ACRES

**PROJECT SUSTAINABILITY:**  
THIS PROJECT PROPOSES THE FOLLOWING PRACTICES TO ENSURE LONG-TERM SUSTAINABILITY OF THE PROPOSED REFORESTATION:

1. SELECTING HEARTY NATIVE SPECIES SUITED FOR THE LOCAL CLIMATE, WITH A FOCUS ON SPECIES WITH THE POTENTIAL TO SURVIVE IN A LARGE RANGE OF CLIMATIC CONDITIONS.
2. FOCUSING ON A DIVERSE ECOSYSTEM, INCLUDING CANOPY TREES, UNDERSTORY TREES, SHRUBS, AND HERBACEOUS PLANTS.
3. MONITOR THE REFORESTATION AREAS FOR TWO YEARS FOLLOWING THE MAINTENANCE AND MONITORING PLAN TO CREATE IDEAL CONDITIONS FOR FOREST ESTABLISHMENT AND CONTROL NON-NATIVE AND INVASIVE SPECIES.

THESE PRACTICES WILL HELP ESTABLISH A NATIVE FOREST THAT IS RESILIENT TO MORE EXTREME TEMPERATURE FLUCTUATIONS AND VARIATIONS IN PRECIPITATION.

THIS AREA IS NOT SUBJECT TO SEA LEVEL RISE PREDICTIONS ACCORDING TO NOAA'S SEA LEVEL RISE VIEWER.

**SOCIAL AND ECONOMIC JUSTICE:**  
THIS PROJECT FALLS WITHIN AN AREA IDENTIFIED IN THE ENVIRONMENTAL JUSTICE SCREENING TOOL AS OVERBURDENED. THE PROJECT AREA HAS A OVERALL ENVIRONMENTAL JUSTICE SCORE OF 60.50.

THE BAINBRIDGE LOGISTICS CENTER IS A TRANSFORMATIVE INDUSTRIAL DEVELOPMENT LOCATED ON THE HISTORIC BAINBRIDGE NAVAL TRAINING CENTER SITE IN PORT DEPOSIT, MARYLAND. DESIGNED AS A PREMIER LOGISTICS AND DISTRIBUTION HUB ALONG THE I-95 CORRIDOR, PHASE I OF THE PROJECT WILL REVITALIZE OVER 440 ACRES OF LONG-VACANT FORMER FEDERAL LAND INTO A DYNAMIC ENGINE FOR ECONOMIC GROWTH. FEATURING STATE-OF-THE-ART WAREHOUSE FACILITIES AND INFRASTRUCTURE TAILORED FOR MODERN LOGISTICS AND ADVANCED MANUFACTURING TENANTS, BAINBRIDGE LOGISTICS CENTER IS POISED TO GENERATE SIGNIFICANT CAPITAL INVESTMENT, ATTRACT HIGH-QUALITY EMPLOYERS, AND CREATE SUSTAINABLE JOBS IN CECIL COUNTY.

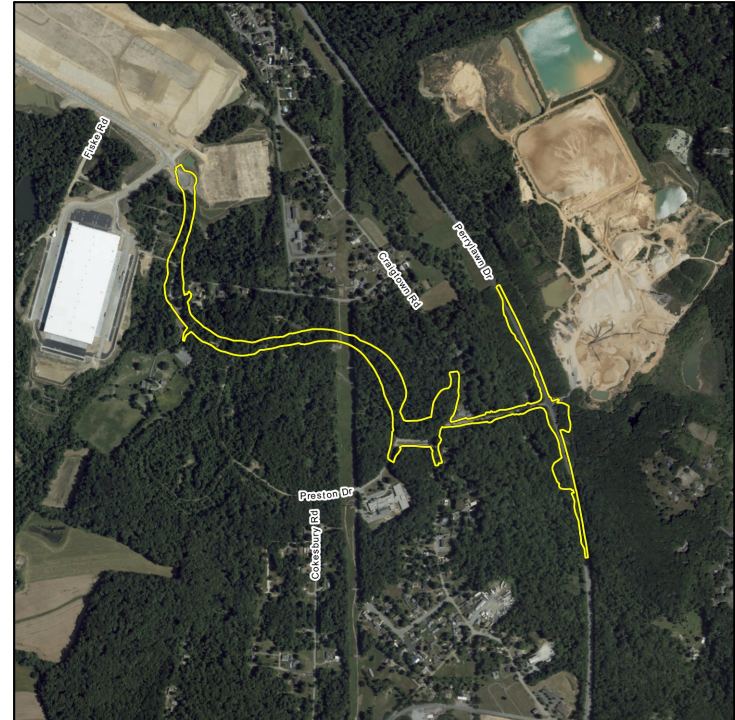
IN CONJUNCTION WITH THE DEVELOPMENT, THIS PROJECT PERTAINS TO A NEW ROAD CONSTRUCTION PROJECT THAT WILL PROVIDE A CRITICAL SECONDARY ACCESS ROUTE TO THE SITE. THIS NEW CONNECTOR KNOWN AS THE PHASE IA/II ROAD IMPROVEMENTS FROM DIAMOND JIM ROAD TO AN EXTENSION OF RECENTLY DEDICATED POWERS ROAD WILL SERVE AS AN ADDITIONAL MEANS OF INGRESS AND EGRESS, IMPROVING TRAFFIC CIRCULATION, ENHANCING EMERGENCY ACCESS, AND ENSURING OPERATIONAL FLEXIBILITY FOR FUTURE TENANTS. BEYOND THE SITE BOUNDARY, THE ROAD PROJECT INCLUDES LOCAL ROADWAY UPGRADES—SUCH AS IMPROVED INTERSECTIONS, WIDENED SHOULDERS, AND SIGNAL ENHANCEMENTS—THAT WILL BENEFIT NEARBY RESIDENTIAL AND COMMERCIAL CORRIDORS. TOGETHER, THE BAINBRIDGE LOGISTICS CENTER AND SUPPORTING TRANSPORTATION INVESTMENTS REPRESENT A COORDINATED PUBLIC-PRIVATE EFFORT TO UNLOCK THE REGION'S ECONOMIC POTENTIAL WHILE STRENGTHENING LOCAL INFRASTRUCTURE.

- GENERAL NOTES:**
1. REFORESTATION WITHIN THE LIMIT OF DISTURBANCE IS CONSTRAINED BY MARYLAND STATE HIGHWAY ADMINISTRATION REQUIREMENTS FOR ROADSIDE CONDITIONS. ALL AVAILABLE AREAS WITHIN THE LIMIT OF DISTURBANCE ARE PROPOSED FOR REFORESTATION.
  2. AN AS-BUILT DESIGN PLAN SHALL BE SUBMITTED TO MDE WITHIN 60 DAYS OF COMPLETION OF THE MITIGATION PROJECT. THE PLAN SHALL DEPICT THE FINAL AREAS RECEIVING MITIGATION CREDIT AND THEIR AREA IN ACRES.
  3. REFORESTATION AREAS ARE TO BE PROTECTED IN PERPETUITY BY PROTECTIVE EASEMENTS. THE EASEMENT SHALL GRANT MDE ACCESS TO THE SITE IN PERPETUITY FOR THE PURPOSES OF INSPECTING THE REFORESTATION AREAS.

- BEST MANAGEMENT PRACTICE NOTES:**
1. TO THE MAXIMUM EXTENT PRACTICABLE, ACTIVITIES SHOULD TAKE PLACE DURING TIMES WHEN SEDIMENT TRANSPORT ARE LIKELY TO BE LOWER AS PREDICTED BY NATIONAL OCEANIC AND ATMOSPHERIC ADMINISTRATION (NOAA) OR 3 CLEAR DAY WEATHER FORECAST.
  2. CONDUCT INSPECTIONS DAILY. LOG BOOKS MAY BE REVIEWED.
  3. IF LIMIT OF DISTURBANCE ALLOWS, LOCATE STOCKPILES MORE THAN 100' FROM STREAM RESOURCES.
  4. PERMANENT MULCH APPLICATION DEPTH SHALL NOT EXCEED 6". TEMPORARY MULCH SPREADING AND MATTING TO MINIMIZE COMPACTION IS ALLOWABLE.
  5. UTILIZE SUPER SILT FENCE (AS SHOWN) NEAR STREAMS.
  6. SEDIMENT CONTROL BASINS CONTAIN BAFFLES (AS SHOWN) TO INCREASE DETENTION TIME.
  7. TIER II SIGNAGE (SEE DETAIL) AND FLAGGING MUST BE PLACED ALONG EDGE OF TIER II BUFFER.
  8. VEHICLES OPERATING WITHIN THE STREAM BUFFER MUST CARRY OIL/GAS/GREASE CLEAN UP KITS FOR SPILL ACCIDENTS.



VICINITY MAP  
SCALE: 1"=2,000'  
COPYRIGHT ADC THE MAP PEOPLE  
PERMITTED USE NUMBER 20711184



AERIAL MAP  
SCALE: 1"=2,000'

LEGEND

- LOD — LOD — LIMIT OF DISTURBANCE
- ~~~~~ EXISTING TREELINE
- W — W — EXISTING WETLAND
- — — — — EXISTING STREAM
- WB — WB — 25' WETLAND BUFFER
- /// TIER II REFORESTATION (1.28 ACRES)
- EXISTING IMPERVIOUS TO BE TREATED (1.98 ACRES)
- EXISTING IMPERVIOUS TO BE REMOVED (0.98 ACRES)

TIER II MITIGATION PLAN

BAINBRIDGE-POWERS ROAD ESXTENSION



1131 Benfield Boulevard • Suite L  
Millersville, Maryland 21108  
Phone: 410-672-5990 • Fax: 410-672-5993  
www.wetlands.com

Prepared For: Bohler Engineering

Cecil County, Maryland  
Copyright © 2025 Wetland Studies and Solutions, Inc.

REVISIONS

No.	Date	Description	Rev. By	App. By

Horizontal Datum: NAD 83

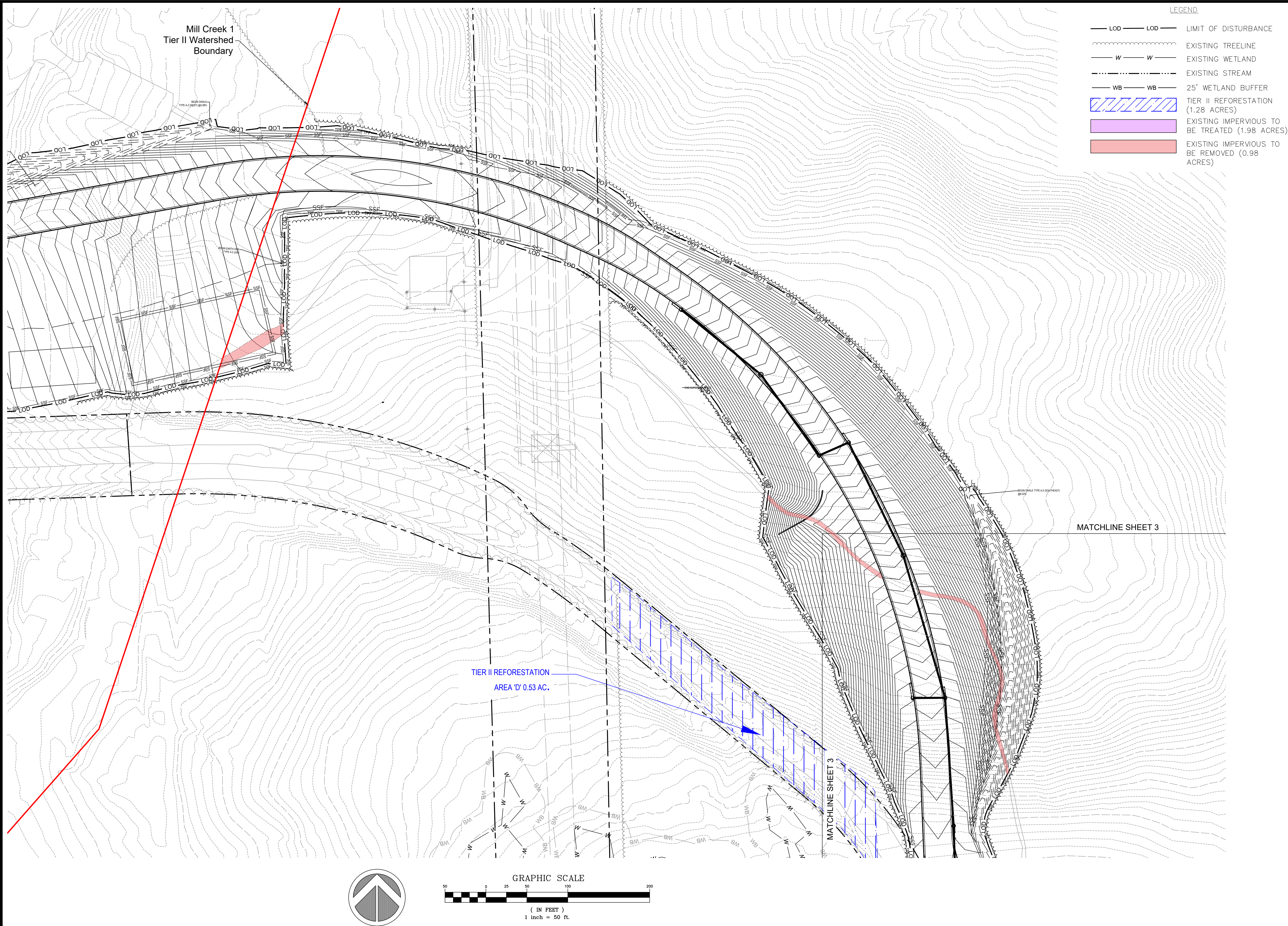
Vertical Datum: NAVD 88

Boundary and Topo Source:  
Bohler  
Cecil County GIS





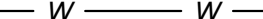
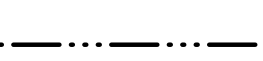
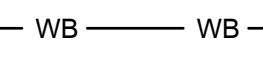

Design	Draft	Approved
HK	HK	MJK

WSSI Project Number:  
WSSI Project Number





LEGEND

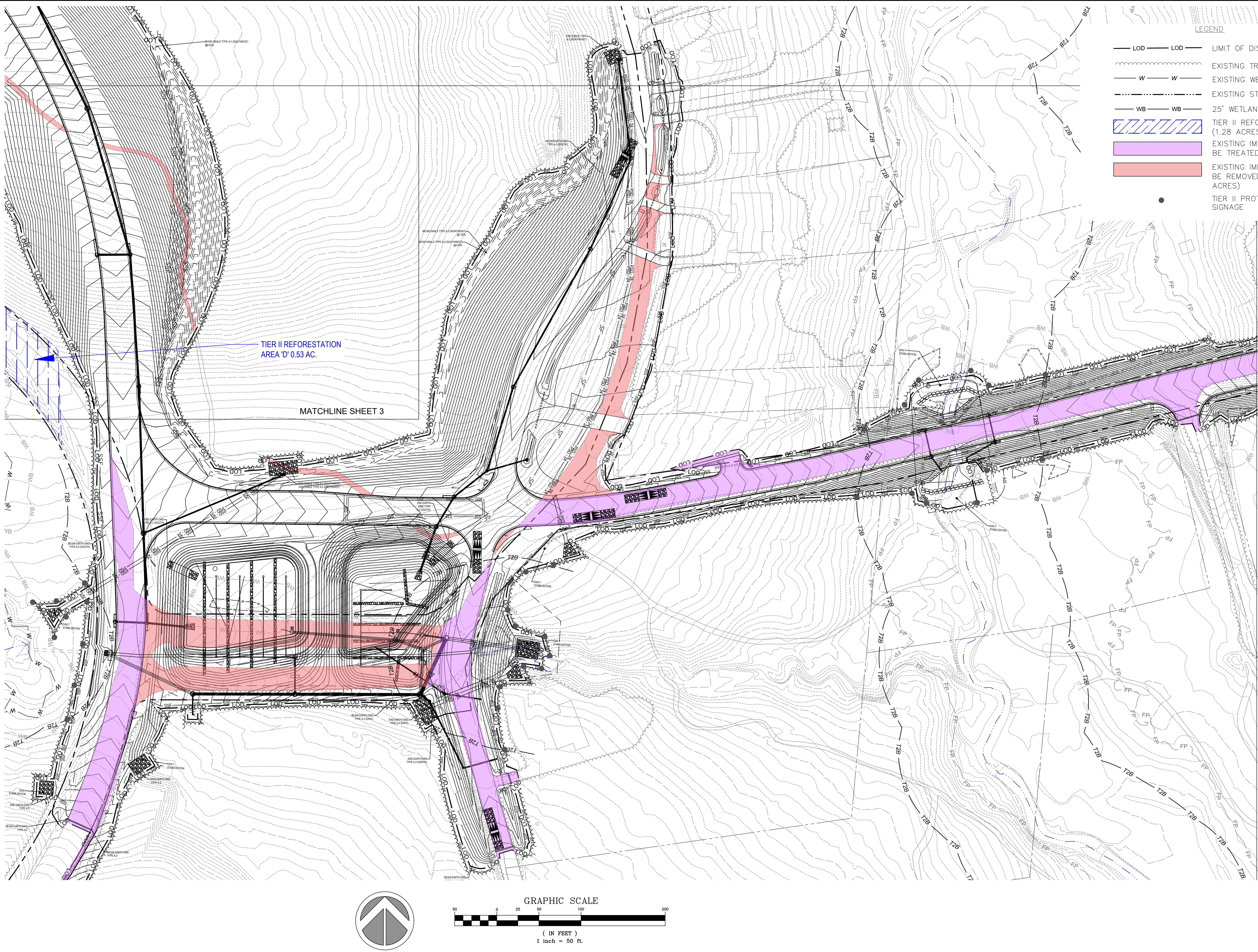
 LOD	LIMIT OF DISTURBANCE
	EXISTING TREELINE
 W	EXISTING WETLAND
	EXISTING STREAM
 WB	25' WETLAND BUFFER
	TIER II REFORESTATION (1.28 ACRES)
	EXISTING IMPERVIOUS TO BE TREATED (1.98 ACRES)
	EXISTING IMPERVIOUS TO BE REMOVED (0.98 ACRES)

## TIER II MITIGATION PLAN

<b><u>REVISIONS</u></b>					
No.	Date	Description	Rev. By	App. By	
			SCALE: As Noted C.I.:2'		



L:\36008\36008\36070\01\CADD\07-REGS\Tier II Mitigation.dwg 3 Plotted By: Haley Kelly, 9/23/2023 10:04 AM



# TIER II MITIGATION PLAN

Prepared For: Bohler Engineering

## BAINBRIDGE-POWERS ROAD ESXTENSION

Cecil County, Maryland

Copyright © 2023 Wetland Studies and Solutions, Inc.

### REVISIONS

No.	Date	Description	Rev. By	App. By

SCALE: As Noted CL: 2'

DATE: date

Horizontal Datum: NAD 83

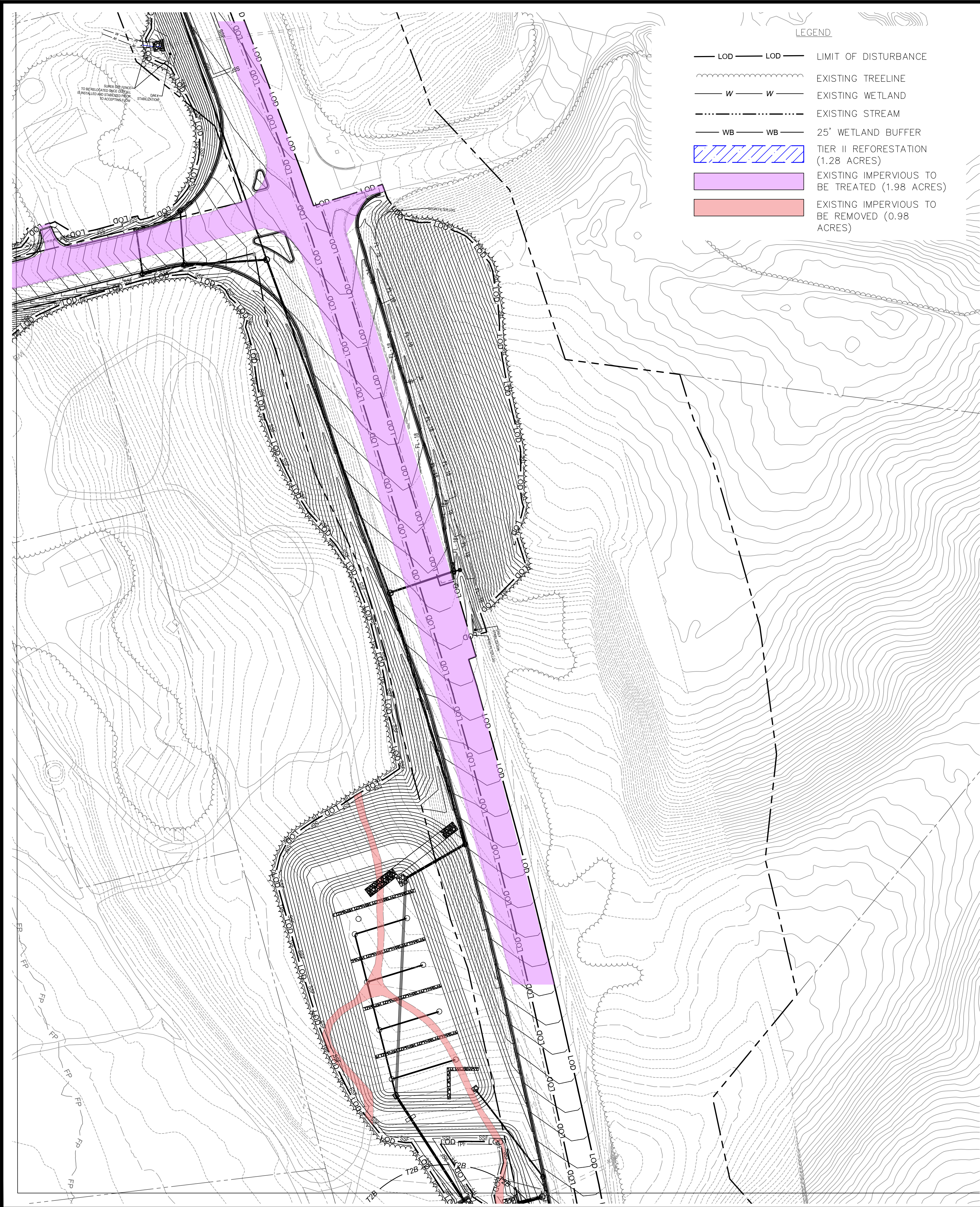
Vertical Datum: NAVD 88

Boundary and Topo Source:  
Bohler  
Cecil County GIS

Design	Draft	Approved
HK	HK	MJK



L:\36008\36008\36070\01\CADD\07-REGS\Tier II Mitigation.dwg 4 Plotted By: Haley Kelly, 9/23/2025 10:05 AM



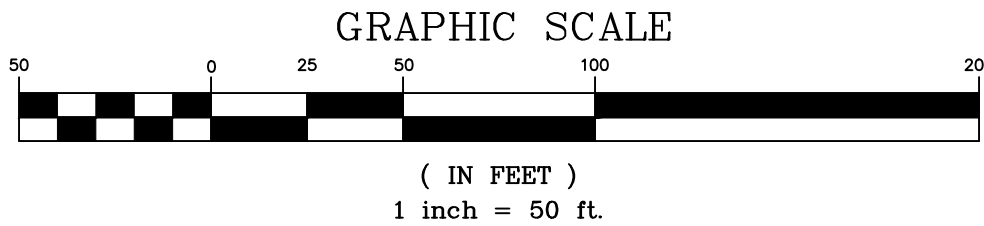
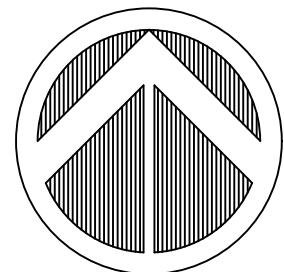
- PLANTING SPECIFICATIONS**
1. PLAN DETAILS ARE INCORPORATED INTO THIS SPECIFICATION BY REFERENCE.
  2. THE SUPPLIER OF ALL SEEDS AND/OR VEGETATION SHALL CERTIFY THAT THE ORIGIN OF THE SEEDS FROM WHICH THE PLANTS OR SEEDS WERE PRODUCED IS FROM HARDINESS ZONES 6 AND 7, FROM THE EASTERN OR CENTRAL PORTIONS OF THE U.S., PRIOR TO PLANTING.
  3. ANY NURSERY SUPPLYING THE STOCK SHALL PROVIDE A CURRENT NURSERY INSPECTION CERTIFICATE FROM THE STATE DEPARTMENT OF AGRICULTURE, OR PROVIDE AT LEAST THIRTY DAYS ADVANCE NOTICE FOR OWNER TO INSPECT THE PLANT SOURCE AREAS AT OWNER'S DISCRETION. ANY SUCH INSPECTION IS NOT DEEMED APPROVAL OF THE PLANT MATERIALS.
  4. PLANTING SHALL ONLY BE PERMITTED BETWEEN SEPTEMBER 30 THROUGH DECEMBER 31. NO PLANTING SHALL OCCUR WHEN THE SOIL IS FROZEN. SEEDING SHALL BE COMPLETED DURING MARCH THROUGH MAY OR SEPTEMBER THROUGH NOVEMBER. THESE TIME LIMITS MAY NOT BE MODIFIED UNLESS APPROVED BY OWNER, IN ADVANCE WITH THE RISK OF SURVIVAL BORNE SOLELY BY THE CONTRACTOR.
  5. PLANTS SHALL BE INSTALLED UTILIZING A RANDOM OR CLUMPED DISTRIBUTION, PER THE PLANTING DISTRIBUTION PATTERN DETAIL.
  6. PLANTING HOLES FOR CONTAINER GROWN PLANTS SHALL BE ONE FOOT (1') DEEP PLUS THE CONTAINER DEPTH IN WHICH THE PLANT HAS BEEN GROWN AND TWICE AS WIDE AS THE CONTAINER.
  7. BACKFILL THE PLANTING HOLES WITH THE IN-SITU SOIL MATERIALS REMOVED FOR PLANTING AFTER REMOVING ALL STONES, ROOTS, AND OTHER DEBRIS GREATER THAN 1-1/2" IN DIAMETER. TABLET FERTILIZER WILL BE NECESSARY ONLY IF WARRANTED BASED ON ENGINEER REVIEW OF SOIL TESTING RESULTS. THE FERTILIZER REQUIREMENT WILL BE PROVIDED BY THE ENGINEER.
  8. FOLLOWING THE BACKFILLING, WATER TO THE POINT OF SOIL SATURATION (IF NOT PLANTED IN THE "WET") AND TAMP TO COMPACT THE BACKFILL MIXTURE. ADD WETLAND SOIL TO BRING THE FINAL GRADE IN THE PLANTING HOLE TO THE SURROUNDING SOIL SURFACE. RAKE THE UNUSED WETLAND SOIL OUTSIDE THE PLANTING HOLES, TAKING CARE NOT TO MOUND THE SOIL OR TO SIGNIFICANTLY ALTER THE EXISTING GRADES AND THEN PLACE MULCH (MIN. 2" THICK) ATOP ENTIRE PLANTING HOLE (EXCEPT THAT NO MULCH IS REQUIRED FOR EMERGENT PLANTINGS). THE PLANTING HOLE AREAS MUST NOT BE DEPRESSED BELOW THE SURROUNDING SOIL SURFACE ELEVATIONS. SAID AREAS SHALL BE SLIGHTLY RAISED (2-3"), RELATIVE TO THE SOIL SURFACE.
  9. THE SHRUBS THAT ARE SPECIFIED AS CONTAINER GROWN SPECIMENS SHALL BE BETWEEN 15" AND 18" IN HEIGHT FOR PLANTING AREA A, AND MIN. 3' HT. FOR PLANTING AREA B. ALL SHRUBS SHALL BE HEALTHY, VIGOROUS, WELL ROOTED AND ESTABLISHED IN THE PLANTING CONTAINER IN WHICH THEY ARE GROWING. A CONTAINER SHRUB SHALL BE IN THAT CONTAINER A SUFFICIENT TIME SUCH THAT FIBROUS ROOTS ARE FORMED SO THE SHAPE WILL REMAIN AND THE MEDIUM WILL HOLD TOGETHER WHEN REMOVED FROM THE CONTAINER (REFER TO AMERICAN STANDARD FOR NURSERY STOCK).
  10. DO NOT REMOVE PLANTS FROM CONTAINERS UNTIL IMMEDIATELY BEFORE PLANTING. EXAMINE THE ROOTS TO SEE IF THEY ARE POT BOUND. CAREFULLY SEPARATE ANY POT BOUND OR CRAMPED ROOTS AND SPREAD THEM OUT WHEN PLACING THE PLANT SO THAT THE ROOTS CAN GROW WITHOUT FURTHER CONSTRUCTION OF THE ROOT BALL.
  11. ALL PLANTED MATERIALS SHOULD BE BACKFILLED WITH MIXED WETLAND SOIL AND ORGANIC AMENDMENTS. ORGANIC AMENDMENTS SHALL BE ADDED AT A MINIMUM RATE OF 60 CUBIC YARDS PER ACRE.
  12. AS RECOMMENDED BY THE CONTRACTOR AND APPROVED BY OWNER, THE CONTRACTOR SHALL WATER THE PLANTS AS NEEDED DURING THE CARE AND REPLACEMENT PERIOD OR UNTIL FINAL ACCEPTANCE, WHICHEVER IS THE SHORTEST.
  13. THE CONTRACTOR IS RESPONSIBLE FOR REPLACING NON- SURVIVING TREES AND SHRUBS DURING THE CARE AND REPLACEMENT PERIOD (12 MONTHS, UNLESS OTHERWISE SPECIFIED IN CONTRACT DOCUMENTS) OR UNTIL FINAL ACCEPTANCE, WHICHEVER IS THE SHORTEST, AS REQUIRED BY THE TERMS OF THE SURVIVAL WARRANTY SPECIFIED HEREIN AND/OR IN CONTRACT DOCUMENTS. THE SPECIFICATIONS FOR THE REPLACED PLANTS SHALL BE THOSE PROVIDED IN THE PLANT LIST.
  14. REFER TO APPLICABLE SKETCHES WITHIN THIS PLAN SET FOR ADDITIONAL GUIDANCE ON PLANTING REQUIREMENTS.
  15. INVASIVE AND NOXIOUS WEEDS SHALL BE REMOVED BY HAND WITH LOCALIZED APPLICATIONS OF GLYPHOSPHATE (AQUA NEAT) OR APPROVED EQUAL WHERE NECESSARY.

- PLANTING SURVIVAL WARRANTY**
1. FOR PLANTING AREA A, LANDSCAPE CONTRACTOR SHALL GUARANTEE A MINIMUM SURVIVAL RATE OF EACH VEGETATION SPECIES AFTER TWELVE MONTHS OF 85% FOR B&B AND CONTAINER GROWN STOCK.
  2. FOR PLANTING AREA B, LANDSCAPE CONTRACTOR SHALL GUARANTEE A MINIMUM SURVIVAL RATE OF EACH VEGETATION SPECIES AFTER TWO (2) YEARS OF 100% FOR B&B AND CONTAINER GROWN STOCK.
  3. IF SURVIVAL RATES ARE LESS THAN THE ABOVE WARRANTY RATES, THEN LANDSCAPE CONTRACTOR SHALL REPLACE THE QUANTITY OF DEAD PLANTS WITHIN THE NEXT PLANTING WINDOW (SEPTEMBER 30 THROUGH DECEMBER 31), EXCLUDING FROZEN GROUND PERIODS) FOLLOWING THE END OF THE APPLICABLE WARRANTY PERIOD.

- PRODUCT HANDLING, STORAGE, AND DELIVERY**
1. HANDLE PLANTS AT ALL TIMES SO THAT ROOTS OR BALLS ARE ADEQUATELY PROTECTED FROM BREAKAGE OF BALLS, FROM SUN AND DRYING WINDS. PLANTS WITH DRIED OUT TOPS OR ROOTS SHALL BE REJECTED.
  2. ALL PLANT MATERIALS SHALL BE STORED AND DELIVERED IN SUCH A FASHION AND FOR TIME INTERVALS CONSISTENT WITH SOUND SILVICULTURAL PRACTICES.
  3. PLANT MATERIAL WILL BE TRANSPORTED FROM THE NURSERY TO THE PLANTING AREAS BY SUCH MEANS AS TO AVOID WIND DAMAGE, OVER-CROWDING, OR OTHER MECHANISMS BY WHICH PHYSICAL DAMAGE MAY RESULT TO THE PLANTS.
  4. PLANT MATERIAL MAY BE RANDOMLY INSPECTED BY THE OWNER UPON ARRIVAL AT EACH PLANTING AREA AND DURING PLANTING ACTIVITIES. MATERIAL FOUND TO BE UNACCEPTABLE WILL BE REJECTED AND THE CONTRACTOR WILL BE REQUIRED TO SUPPLY REPLACEMENT MATERIAL WITHIN A REASONABLE TIME FRAME (I.E. 1-WEEK). UNACCEPTABLE MATERIAL IS TO BE DEFINED AS THE FOLLOWING:
    - (A) PLANTS WITH BENT TRUNKS OR MULTIPLE LEADERS; UNLESS CHARACTERISTICS FOR THE SPECIES;
    - (B) PLANTS WITH DISEASED TRUNKS, STEMS, OR LEAVES;
    - (C) PLANTS WITH PEST-INFESTED TRUNKS, STEMS, OR LEAVES;
    - (D) PLANTS OF INSUFFICIENT SIZE (LESS THAN A SPECIFIED HEIGHT);
    - (E) PLANTS OF THE WRONG SPECIES/SUB-SPECIES;
    - (F) PLANTS HAVING ROOT GIRDLING IN THE CONTAINER;UNLESS OTHERWISE APPROVED BY THE OWNER. JUSTIFICATION FOR USE OF TENTATIVELY REJECTED MATERIAL MAY BE PRESENTED TO THE OWNER.

- MAINTENANCE AND MONITORING PLAN**
1. WATER ONLY AS NECESSARY, BUT AT LEAST ONCE EVERY 10 DAYS WITHOUT RAINFALL FROM MAY THROUGH SEPTEMBER, DEPENDING ON SOIL MOISTURE LEVELS. MONITOR TO ENSURE THAT OVER-WATERING DOES NOT OCCUR.
  2. IF NEEDED, USE LOW NITROGEN AND SLOW RELEASE FERTILIZERS AND APPLY IN THE LATE FALL OR EARLY SPRING.
  3. IF NEEDED, REMOVE DEAD AND/OR DAMAGED TREES AND REPLACE WITH LIVE STOCK.
  4. IF NEEDED, REMOVE INVASIVE SPECIES UTILIZING MANUAL REMOVAL OR SPOT HERBICIDE APPLICATION.
  5. INSPECTIONS FOR SURVIVAL SHALL BE PERFORMED ANNUALLY AND PLANTS REPLACED AS NEEDED IN THE NEXT APPROPRIATE PLANTING SEASON. THE GOAL IS THAT AT THE END OF THE MAINTENANCE PERIOD, SURVIVAL STANDARDS CAN BE MET. IF THE COUNTY DETERMINES THAT SURVIVAL IS NOT ADEQUATE, THE MONITORING PERIOD MAY BE EXTENDED AND ADDITIONAL INSPECTIONS MAY BE REQUIRED AT THE DISCRETION OF MARYLAND DEPARTMENT OF THE ENVIRONMENT.
  6. THE LANDOWNER MUST ALLOW REPRESENTATIVES OF MARYLAND DEPARTMENT OF THE ENVIRONMENT TO ENTER THE PROPERTY TO INSPECT THE PLANTINGS AT APPROPRIATE TIMES.
  7. LANDOWNER IS RESPONSIBLE FOR SUBMITTING ANNUAL MONITORING REPORTS TO THE ANTIDEGRADATION DEPARTMENT AT THE MARYLAND DEPARTMENT OF THE ENVIRONMENT

- LONG TERM PROTECTION PLAN**
1. AT THE END OF THE 2-YEAR MONITORING PERIOD, ALL OF THE PLANTS ARE REQUIRED TO SURVIVE PER COMAR 27.01.09.01-2J. ANY STOCK THAT DID NOT SURVIVE SHALL BE REPLACED TO MEET MINIMUM SUVVIVABILITY STANDARDS.
  2. AT THE END OF THE MONITORING PERIOD, THE REQUIRED SURVIVAL RATE FOR BARE ROOT SEEDLINGS AND WHIPS SHALL BE 50%, FOR 1/2" TO 1" CONTAINER GROWN TREES SHALL BE 75%, AND FOR >1" CONTAINER GROWN TREES SHALL BE 90%.
  3. REFORESTATION SHALL BE PROTECTED IN PERPETUITY THROUGH PROTECTIVE EASEMENTS.



1131 Benfield Boulevard • Suite L  
Millersville, Maryland 21108  
Phone: 410-672-5990 • Fax: 410-672-5993  
www.wetlands.com

Wetland Shades and Solutions, Inc. a DWAY company

TIER II MITIGATION PLAN

Prepared For: Bohler Engineering

BAINBRIDGE-POWERS ROAD ESXTENSION

Cecil County, Maryland

Copyright © 2025 Wetland Shades and Solutions, Inc.

REVISONS

No.	Date	Description	Rev. By	App. By

SCALE: As Noted C1:2'

DATE: date

Horizontal Datum: NAD 83

Vertical Datum: NAVD 88

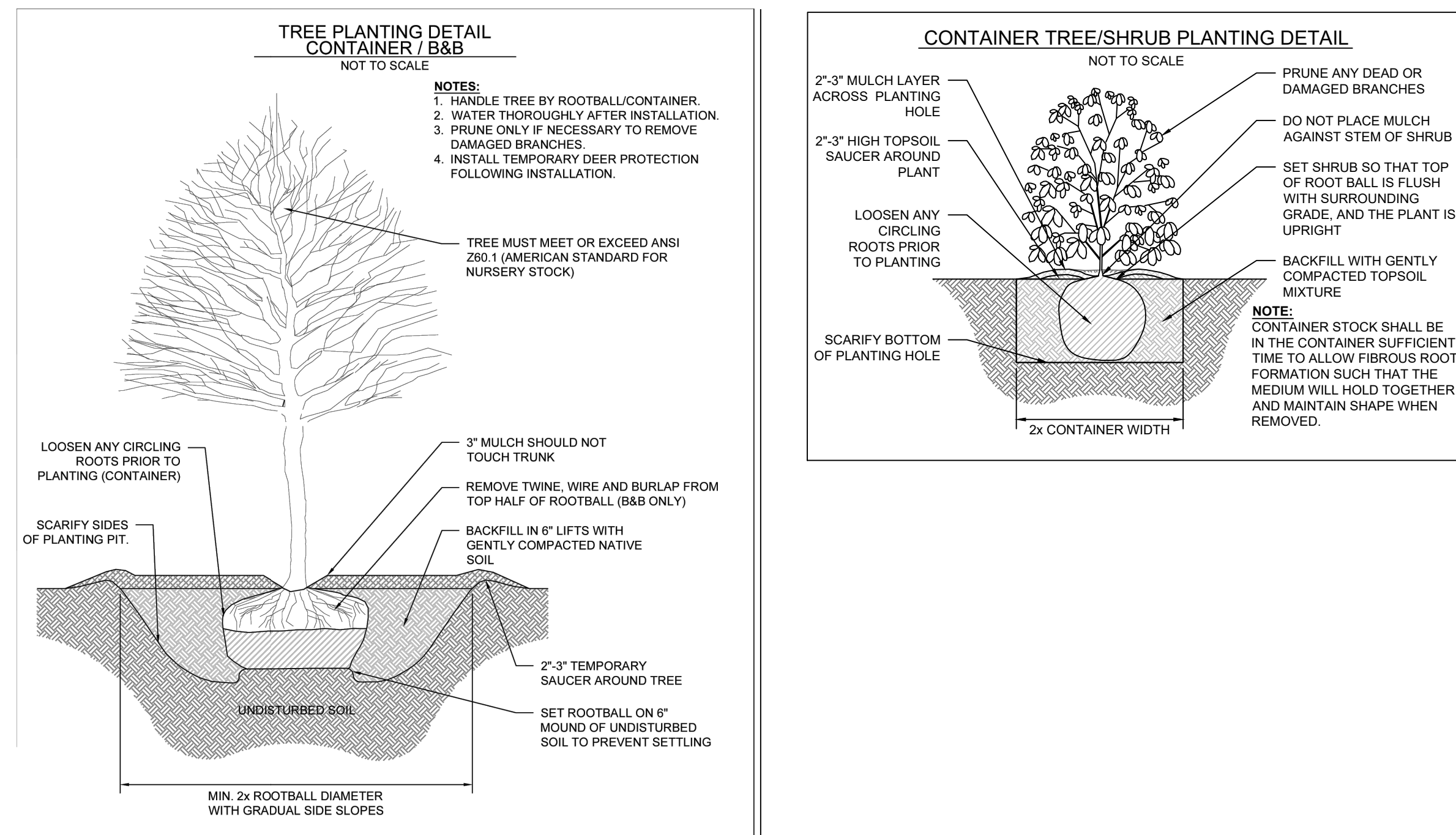
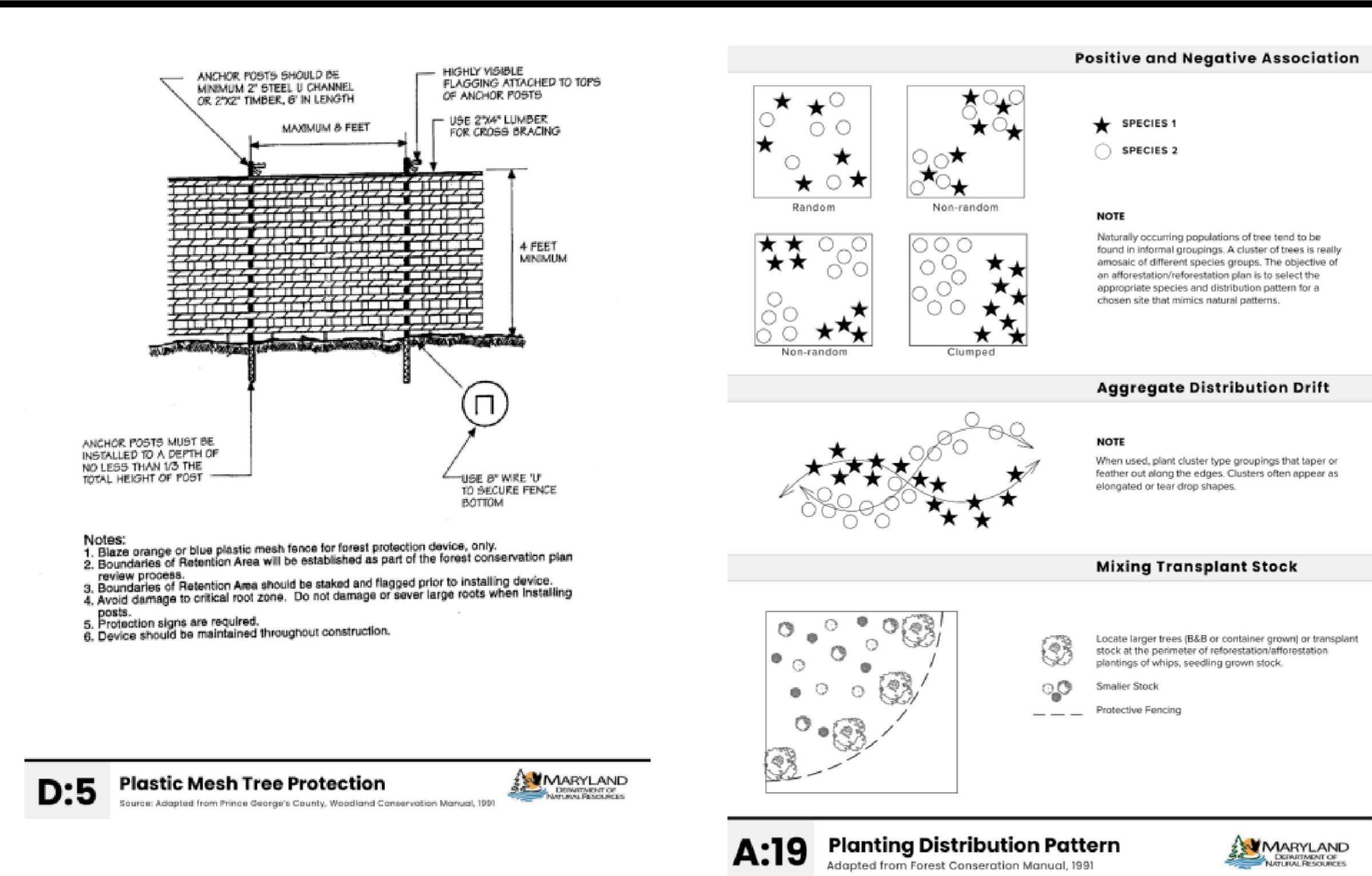
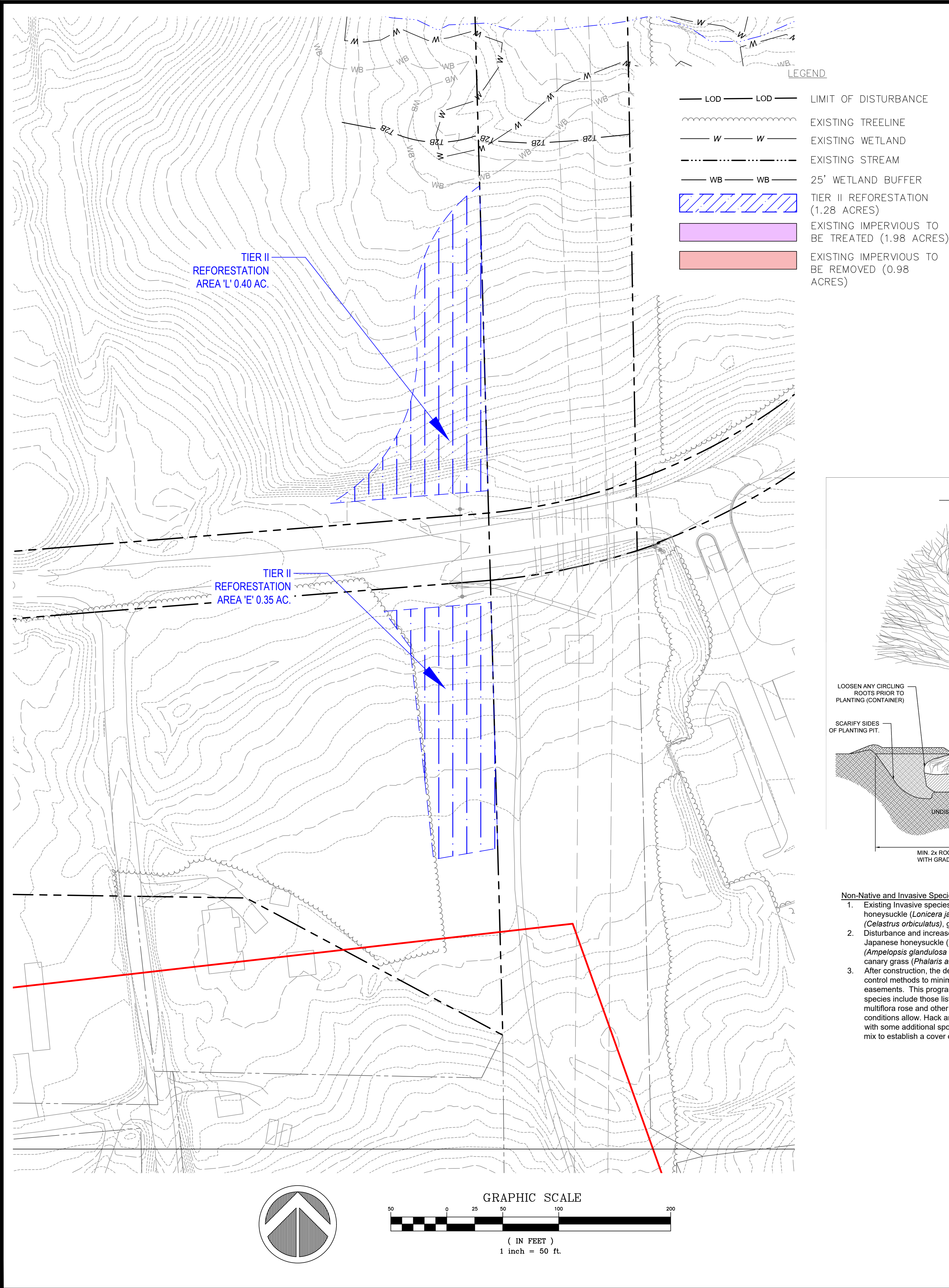
Boundary and Topo Source: Bohler Cecil County GIS

Design	Draft	Approved
HK	HK	MJK

4 of 7

WSSI Project Number:  
WSSI Project Number





TIER II WATERS:  
HIGH QUALITY  
WATERS  
-----  
EROSION AND  
SEDIMENT  
CONTROL  
MEASURES  
STRICTLY  
ENFORCED

TIER II SIGN DETAIL  
(Not to Scale)

- Notes:
1. Bottom of signs to be higher than top of tree protection fence.
  2. Signs to be placed approximately 50 feet apart. Conditions on site affecting visibility may warrant placing signs closer or farther apart.
  3. Attachment of signs to trees is prohibited.

REVISIONS					
No.	Date	Description	Rev. By	App. By	
DATE: date			SCALE: As Noted C.L.: 2'		

Horizontal Datum: NAD 83

Vertical Datum: NAVD 88

Boundary and Topo Source:  
Bohler  
Cecil County GIS

Design	Draft	Approved
HK	HK	MJK

WSSI Project Number:  
WSSI Project Number







