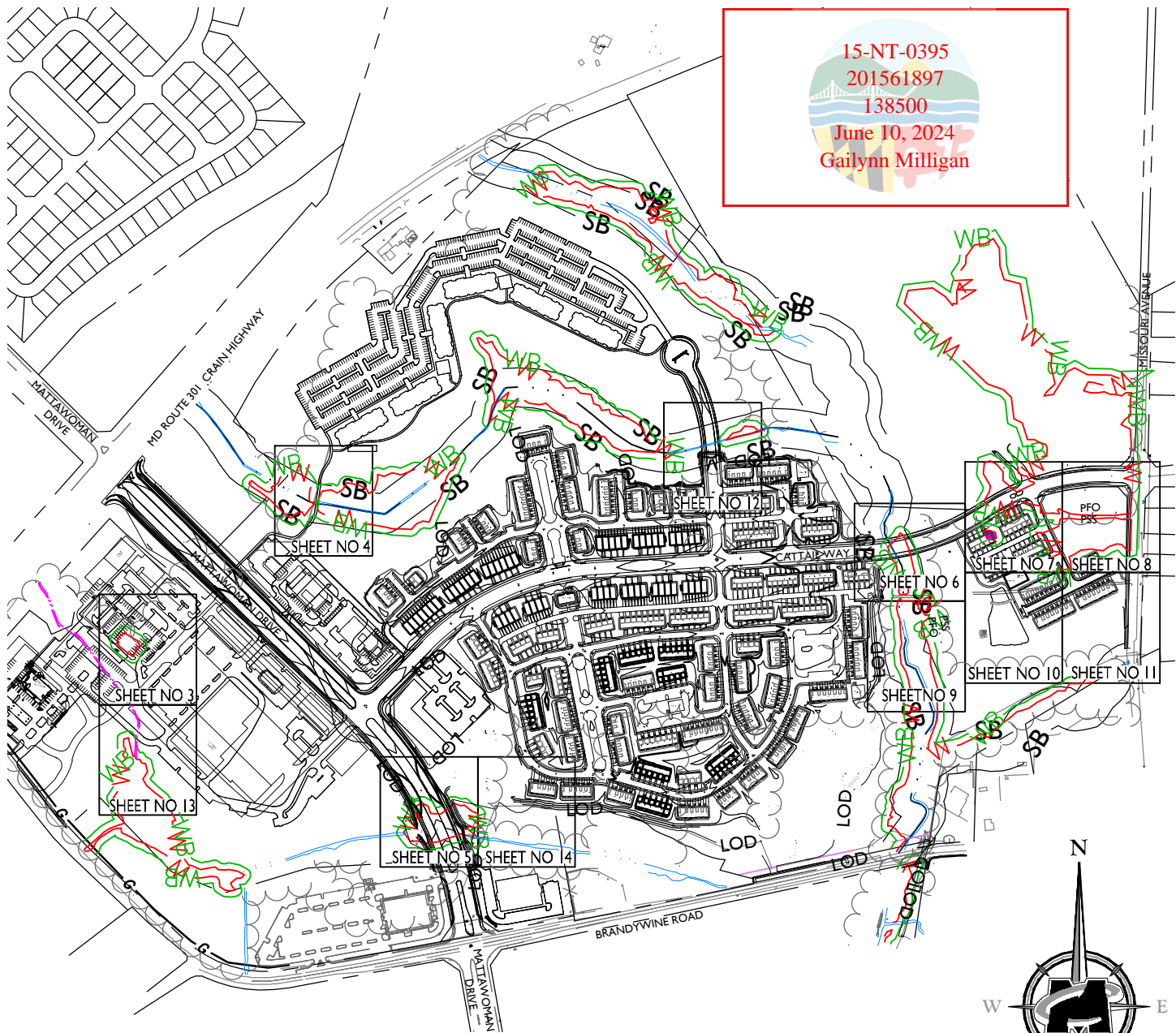
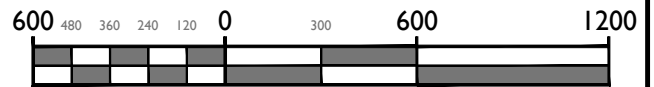


15-NT-0395
 201561897
 138500
 June 10, 2024
 Gailynn Milligan



EXIST. NON-TIDAL WETLANDS AREA TABLE

	PFO AREA		PSS AREA		EMERGENT AREA		TOTAL AREA	
	SF	AC	SF	AC	SF	AC	SF	AC
WETLANDS	572,334	13.1390	43,819	1.0059	1,215	0.0279	617,368	14.1728
WETLAND BUFFERS	331,743	7.6158	24,997	0.5738	5,406	0.1241	362,146	8.3137



SCALE : 1" = 600'

MASER
CONSULTING P.A.

Customer Loyalty through Client Satisfaction
www.maserconsulting.com

Engineers ■ Planners ■ Surveyors
 Landscape Architects ■ Environmental Scientists

Office Locations:

- Red Bank, NJ
- Clinton, NJ
- Hamilton, NJ
- Egg Harbor, NJ
- Montvale, NJ
- Mt. Arlington, NJ
- Mt. Laurel, NJ
- Albany, NY
- Newburgh, NY
- Hawthorne, NY
- Columbia, MD
- Lehigh Valley, PA
- Exton, PA
- Philadelphia, PA
- Pittsburgh, PA
- Tampa, FL
- Orlando, FL
- Miami, FL
- Sterling, VA
- Norfolk, VA
- Albuquerque, NM
- Charlotte, NC

Copyright © 2023, Maser Consulting P.A. All Rights Reserved. This drawing and all the information contained herein is authorized for use only by the party for whom the services were contracted or to whom it is certified. This drawing may not be copied, reused, disclosed, distributed or relied upon for any other purpose without the express written consent of Maser Consulting P.A.

WETLAND IMPACT PLATES
 FOR
 STEPHEN'S CROSSING AT
 BRANDYWINE
 15-NT-0395/201561897
 BRANDYWINE BUSINESS PARK,
 LOTS 2-21, 23-27, PARCELS A-C,
 & OUTPARCEL A

PRINCE GEORGE'S COUNTY
 MARYLAND

Know what's below.
 Call before you dig.
 FOR STATE SPECIFIC DIRECT PHONE NUMBERS
 VISIT: WWW.CALL811.COM

STERLING OFFICE
 22375 Braddock Drive
 Suite 110
 Sterling, VA 20166
 Phone: 703.430.4330
 Fax: 703.430.4339

REV: 09-25-23

SCALE: AS SHOWN	DATE: 09/25/23 REVISION: 04/28/23 REVISION: 04/28/23	DRAWN BY: DHL/PJS	CHECKED BY: LW/TJ
PROJECT NUMBER: 20000831A	DRAWING NAME: C-WETLAND IMPACT PLATES		
SHEET TITLE: OVERALL KEY MAP			
SHEET NUMBER: 1 of 14			

LEGEND

	WETLAND BOUNDARY		PEM WETLAND IMPACT (PERM)
	WETLAND BUFFER		PFO WETLAND IMPACT (PERM)
	ROAD DISTURBANCE		DISTURBANCE IN FLOODPLAIN
	UTILITY DISTURBANCE		FORESTED AREA, PALUSTRINE FORESTED OUTSIDE OF OLD FARM FIELD (PFO)
	LOT FILL/GRADING DISTURBANCE		FORESTED AREA, PALUSTRINE SHRUB SCRUB OLD FARM FIELD NEAR MISSOURI AVENUE (PSS)
	STORM DRAIN/STORMWATER MANAGEMENT DISTURBANCE		INTERMITTENT STREAM
	WATER OF US IMPACT (TEMP)		EPHEMERAL STREAM
	WATER OF US IMPACT (PERM)		PFO/PSS BOUNDARY LINE
	WETLAND BUFFER IMPACT (TEMP)		LIMIT OF DISTURBANCE
	WETLAND BUFFER IMPACT (PERM)		
	WETLAND IMPACT (TEMP)		

IMPACTS BY AREA NUMBER

IMPACT AREA No.	WETLAND TYPE	PFO WETLAND IMPACT(SF) (PERM)	PFO WETLAND IMPACT(SF) (TEMP)	PEM WETLAND IMPACT(SF) (PERM)	WETLAND BUFFER IMPACT(SF) (PERM)	WETLAND BUFFER IMPACT(SF) (TEMP)	WATERS OF US IMPACT (LF) (PERM) (LF)/(SF)	WATERS OF US IMPACT (LF) (TEMP) (LF)/(SF)	FLOOD-PLAIN IMPACT(SF) (PERM)	FLOOD-PLAIN IMPACT (SF) (TEMP)	GROUND ELEV. TO FLOOD-PLAIN ELEV. (CY OF FILL) (PERM)
1	PFO	4,336	0	0	8,754	0	0	0	0	0	0
2	PFO	154	338	0	1,228	2,792	12/70	73/175	0	4,986	0
3	PFO	22,164	1,430	0	12,804	372	214/1,284	40/315	9,984	0	2,219
4	PFO	7,080	440	0	8,487	0	177/2,563	22/450	11,653	0	3,453
5	PFO	0	0	0	1,045	0	0	0	0	0	0
6	PEM	0	0	1,215	5,406	0	0	0	0	0	0
7	PFO	71,340	0	0	40,158	0	0	0	0	0	0
8	-	0	0	0	0	0	0	0	8,721	0	646
9	PFO	0	1,046	0	0	397	0	9/30	0	4,096	0
10	PFO	46	44	0	1,592	349	157/790	27/160	3,476	0	129
11	-	0	0	0	0	0	0	0	114	0	9
12	-	0	0	0	631	0	0	0	0	0	0
13	-	0	0	0	0	906	0	0	0	3,720	0
14	-	0	0	0	0	0	0	0	205	0	15
15	-	0	0	0	0	0	0	0	894	0	100
TOTAL		105,120	3,298	1,215	80,105	4,816	560/4,707	171/1,130	35,047	12,802	6,571

WATERS OF THE U.S. LENGTH TABLE

EXISTING WATERS OF THE U.S.	5,261	LF		
WATERS OF THE U.S. PERMANENT DISTURBANCE	560	LF	4,707	sq. ft.
WATERS OF THE U.S. TEMPORARY DISTURBANCE	171	LF	1,130	sq. ft.

15-NT-0395
201561897
138500
June 10, 2024
Gailynn Milligan



Customer Loyalty through Client Satisfaction
www.maserconsulting.com
 Engineers ■ Planners ■ Surveyors
 Landscape Architects ■ Environmental Scientists

- Office Locations:
- Red Bank, NJ
 - Clinton, NJ
 - Hamilton, NJ
 - Egg Harbor, NJ
 - Montvale, NJ
 - Mt. Arlington, NJ
 - Mt. Laurel, NJ
 - Albany, NY
 - Newburgh, NY
 - Hawthorne, NY
 - Columbia, MD
 - Lehigh Valley, PA
 - Exton, PA
 - Philadelphia, PA
 - Pittsburgh, PA
 - Tampa, FL
 - Orlando, FL
 - Miami, FL
 - Sterling, VA
 - Norfolk, VA
 - Albuquerque, NM
 - Charlotte, NC

Copyright © 2023, Maser Consulting P.A. All Rights Reserved. This drawing and all the information contained herein is authorized for use only by the party for whom the services were contracted or to whom it is certified. This drawing may not be copied, reused, disclosed, distributed or relied upon for any other purpose without the express written consent of Maser Consulting P.A.

WETLAND IMPACT PLATES

FOR
STEPHEN'S CROSSING AT BRANDYWINE
 15-NT-0395/201561897
 BRANDYWINE BUSINESS PARK,
 LOTS 2-21, 23-27, PARCELS A-C,
 & OUTPARCEL A
 PRINCE GEORGE'S COUNTY
 MARYLAND



Know what's below.
 Call before you dig.
 FOR STATE SPECIFIC DIRECT PHONE NUMBERS
 VISIT: WWW.CALL811.COM

PROTECT YOURSELF
 ALL STATES REQUIRE NOTIFICATION
 OF EXCAVATORS, DESIGNERS, OR
 ANY PERSON PREPARING TO
 DISTURB THE EARTH'S SURFACE
 ANYWHERE IN ANY STATE



STERLING OFFICE
 22375 Br oderrick Drive
 Suite 110
 Sterling, VA 20166
 Phone: 703.430.4330
 Fax: 703.430.4339

REV: 09-25-23



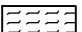
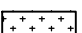
SCALE:	DATE: 03/17/21	DRAWN BY:	CHECKED BY:
AS SHOWN	REVISION DATE: 09/25/23	DHL/PJS	LWA/TJ
PROJECT NUMBER:	DRAWING NAME:		
20000831A	C-WETLAND IMPACT PLATES		

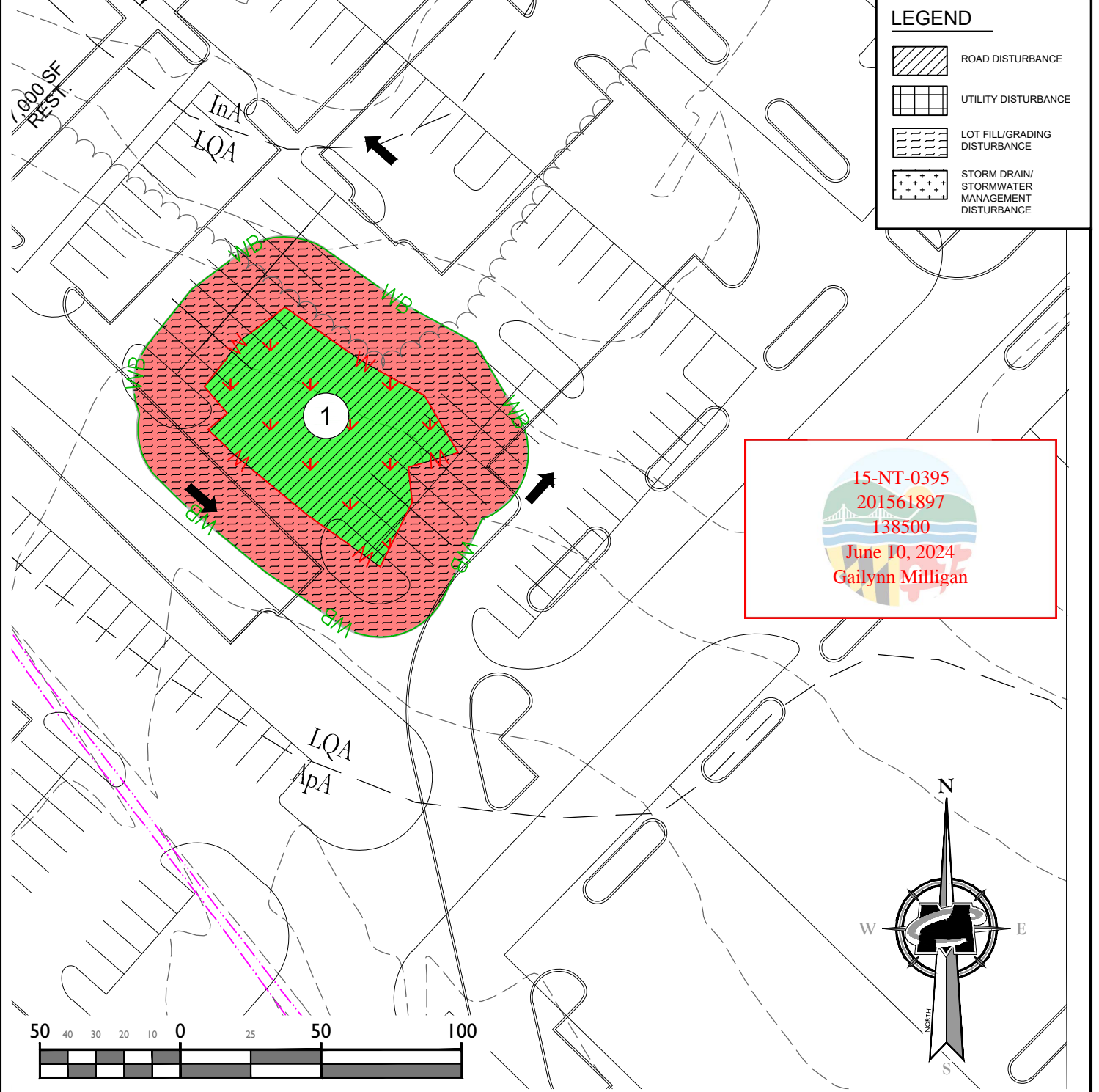
SHEET TITLE:
LEGEND AND IMPACT TABLES

SHEET NUMBER:
2 of 14

IMPACTS BY AREA NUMBER											
IMPACT AREA No.	WETLAND TYPE	PFO WETLAND IMPACT(SF) (PERM)	PFO WETLAND IMPACT(SF) (TEMP)	PEM WETLAND IMPACT(SF) (PERM)	WETLAND BUFFER IMPACT(SF) (PERM)	WETLAND BUFFER IMPACT(SF) (TEMP)	WATERS OF US IMPACT (PERM) (LF)/(SF)	WATERS OF US IMPACT (TEMP) (LF)/(SF)	FLOOD-PLAIN IMPACT(SF) (PERM)	FLOOD-PLAIN IMPACT (SF) (TEMP)	GROUND ELEV. TO FLOOD-PLAIN ELEV. (CY OF FILL) (PERM)
1	PFO	4336	0	0	8754	0	0	0	0	0	0

LEGEND

-  ROAD DISTURBANCE
-  UTILITY DISTURBANCE
-  LOT FILL/GRADING DISTURBANCE
-  STORM DRAIN/STORMWATER MANAGEMENT DISTURBANCE



15-NT-0395
 201561897
 138500
 June 10, 2024
 Gailynn Milligan

SEE PLATE 13

MASER CONSULTING P.A.

Customer Loyalty through Client Satisfaction
 www.maserconsulting.com

Engineers ■ Planners ■ Surveyors
 Landscape Architects ■ Environmental Scientists

Office Locations:

- Red Bank, NJ
- Clinton, NJ
- Hamilton, NJ
- Egg Harbor, NJ
- Montvale, NJ
- Mt. Arlington, NJ
- Mt. Laurel, NJ
- Albany, NY
- Newburgh, NY
- Hawthorne, NY
- Columbia, MD
- Lehigh Valley, PA
- Exton, PA
- Philadelphia, PA
- Pittsburgh, PA
- Tampa, FL
- Orlando, FL
- Miami, FL
- Sterling, VA
- Norfolk, VA
- Albuquerque, NM
- Charlotte, NC

Copyright © 2023, Maser Consulting P.A. All Rights Reserved. This drawing and all the information contained herein is authorized for use only by the party for whom the services were contracted or to whom it is certified. This drawing may not be copied, reused, disclosed, distributed or relied upon for any other purpose without the express written consent of Maser Consulting P.A.

WETLAND IMPACT PLATES

FOR
 STEPHEN'S CROSSING AT
 BRANDYWINE
 15-NT-0395/201561897
 BRANDYWINE BUSINESS PARK,
 LOTS 2-21, 23-27, PARCELS A-C,
 & OUTPARCEL A

PRINCE GEORGE'S COUNTY
 MARYLAND

811

PROTECT YOURSELF
 ALL STATES REQUIRE NOTIFICATION
 OF EXCAVATORS, DESIGNERS, OR
 ANY PERSON PREPARING TO
 DISTURB THE EARTH'S SURFACE
 ANYWHERE IN ANY STATE

Know what's below.
 Call before you dig.

FOR STATE SPECIFIC DIRECT PHONE NUMBERS
 VISIT: WWW.CALL811.COM

STERLING OFFICE
 22375 Br odereck Drive
 Suite 110
 Sterling, VA 20166

Phone: 703.430.4330
 Fax: 703.430.4339

REV: 09-25-23

SCALE:	DATE: 03/27/23	DRAWN BY:	CHECKED BY:
AS SHOWN:	REVISION: 04/28/23	DHL/PJS	LWA/TJ
PROJECT NUMBER:	DRAWING NAME:		
20000831A	C-WETLAND IMPACT PLATES		

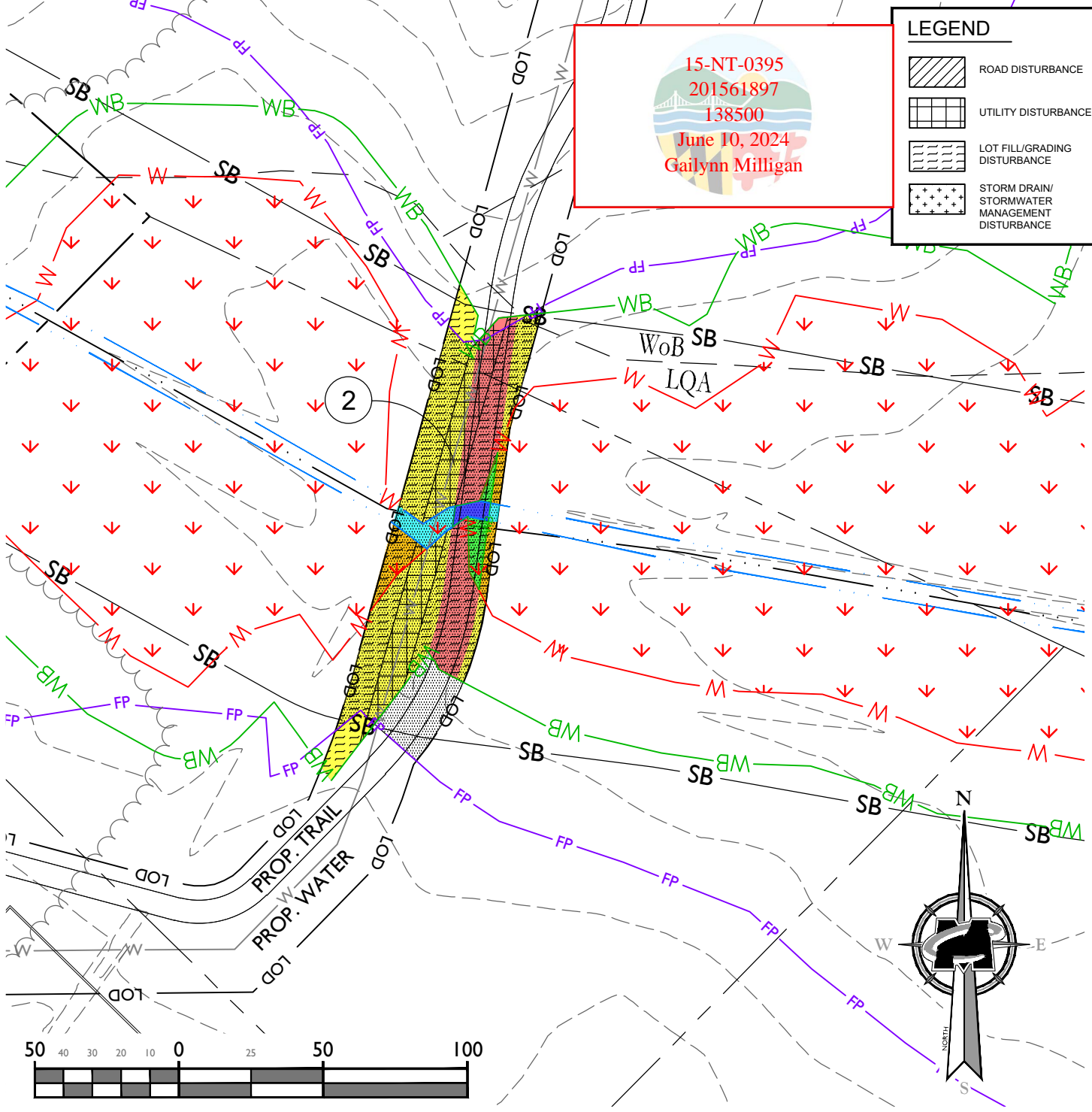
SHEET TITLE:
IMPACT AREA No. 1

SHEET NUMBER:
3 of 14

IMPACTS BY AREA NUMBER											
IMPACT AREA No.	WETLAND TYPE	PFO WETLAND IMPACT(SF) (PERM)	PFO WETLAND IMPACT(SF) (TEMP)	PEM WETLAND IMPACT(SF) (PERM)	WETLAND BUFFER IMPACT(SF) (PERM)	WETLAND BUFFER IMPACT(SF) (TEMP)	WATERS OF US IMPACT (PERM) (LF)/(SF)	WATERS OF US IMPACT (TEMP) (LF)/(SF)	FLOOD-PLAIN IMPACT(SF) (PERM)	FLOOD-PLAIN IMPACT (SF) (TEMP)	GROUND ELEV. TO FLOOD-PLAIN ELEV. (CY OF FILL) (PERM)
2	PFO	154	338	0	1,228	2,792	12/70	73/175	0	4,986	0

15-NT-0395
 201561897
 138500
 June 10, 2024
 Gailynn Milligan

LEGEND	
	ROAD DISTURBANCE
	UTILITY DISTURBANCE
	LOT FILL/GRADING DISTURBANCE
	STORM DRAIN/STORMWATER MANAGEMENT DISTURBANCE



MASER CONSULTING P.A.

Customer Loyalty through Client Satisfaction
 www.maserconsulting.com

Engineers ■ Planners ■ Surveyors
 Landscape Architects ■ Environmental Scientists

Office Locations:

- Red Bank, NJ
- Clinton, NJ
- Hamilton, NJ
- Egg Harbor, NJ
- Montvale, NJ
- Mt. Arlington, NJ
- Mt. Laurel, NJ
- Albany, NY
- Newburgh, NY
- Hawthorne, NY
- Columbia, MD
- Lehigh Valley, PA
- Exton, PA
- Philadelphia, PA
- Pittsburgh, PA
- Tampa, FL
- Orlando, FL
- Miami, FL
- Sterling, VA
- Norfolk, VA
- Albuquerque, NM
- Charlotte, NC

Copyright © 2023, Maser Consulting P.A. All Rights Reserved. This drawing and all the information contained herein is authorized for use only by the party for whom the services were contracted or to whom it is certified. This drawing may not be copied, reused, disclosed, distributed or relied upon for any other purpose without the express written consent of Maser Consulting P.A.

WETLAND IMPACT PLATES
 FOR
 STEPHEN'S CROSSING AT BRANDYWINE
 15-NT-0395/201561897
 BRANDYWINE BUSINESS PARK,
 LOTS 2-21, 23-27, PARCELS A-C,
 & OUTPARCEL A

PRINCE GEORGE'S COUNTY
 MARYLAND

811
 Know what's below.
 Call before you dig.
 FOR STATE SPECIFIC DIRECT PHONE NUMBERS
 VISIT: WWW.CALL811.COM

PROTECT YOURSELF
 ALL STATES REQUIRE NOTIFICATION
 OF EXCAVATORS, DESIGNERS, OR
 ANY PERSON PREPARING TO
 DISTURB THE EARTH'S SURFACE
 ANYWHERE IN ANY STATE

STERLING OFFICE
 22375 Braddock Drive
 Suite 110
 Sterling, VA 20166
 Phone: 703.430.4330
 Fax: 703.430.4339

REV: 09-25-23


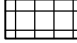
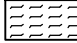
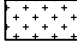
SCALE:	DATE: 03/27/23	DRAWN BY:	CHECKED BY:
AS SHOWN:	REVISION: 04/18/23	DHL/PJS	LWA/TJ
PROJECT NUMBER:	DRAWING NAME:		
20000831A	C-WETLAND IMPACT PLATES		

SHEET TITLE:
IMPACT AREA No. 2

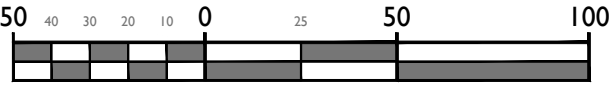
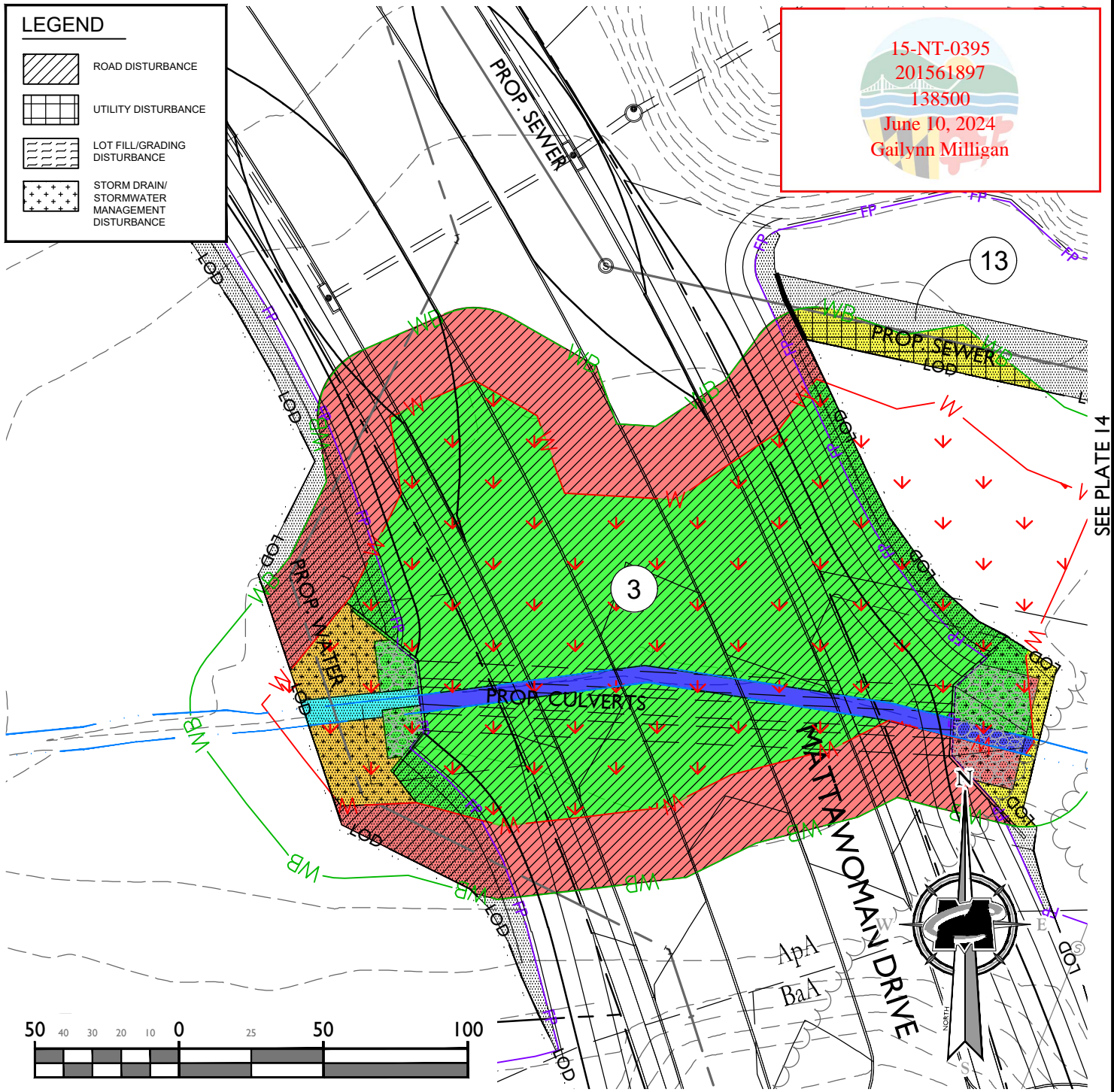
SHEET NUMBER:
 4 of 14

IMPACTS BY AREA NUMBER											
IMPACT AREA No.	WETLAND TYPE	PFO WETLAND IMPACT(SF) (PERM)	PFO WETLAND IMPACT(SF) (TEMP)	PEM WETLAND IMPACT(SF) (PERM)	WETLAND BUFFER IMPACT(SF) (PERM)	WETLAND BUFFER IMPACT(SF) (TEMP)	WATERS OF US IMPACT (PERM) (LF)/(SF)	WATERS OF US IMPACT (TEMP) (LF)/(SF)	FLOOD-PLAIN IMPACT(SF) (PERM)	FLOOD-PLAIN IMPACT (SF) (TEMP)	GROUND ELEV. TO FLOOD-PLAIN ELEV. (CY OF FILL) (PERM)
3	PFO	22,164	1,430	0	12,804	372	214/1,284	40/315	9,984	0	2,219
13	-	0	0	0	0	906	0	0	0	3,720	0

LEGEND

-  ROAD DISTURBANCE
-  UTILITY DISTURBANCE
-  LOT FILL/GRADING DISTURBANCE
-  STORM DRAIN/STORMWATER MANAGEMENT DISTURBANCE

15-NT-0395
201561897
138500
June 10, 2024
Gailynn Milligan



SEE PLATE 14




Customer Loyalty through Client Satisfaction
www.maserconsulting.com
Engineers ■ Planners ■ Surveyors
Landscape Architects ■ Environmental Scientists

Office Locations:


- Red Bank, NJ
- Clinton, NJ
- Hamilton, NJ
- Egg Harbor, NJ
- Montvale, NJ
- Mt. Arlington, NJ
- Mt. Laurel, NJ
- Albany, NY
- Newburgh, NY
- Hawthorne, NY
- Columbia, MD
- Lehigh Valley, PA
- Exton, PA
- Philadelphia, PA
- Pittsburgh, PA
- Tampa, FL
- Orlando, FL
- Miami, FL
- Sterling, VA
- Norfolk, VA
- Albuquerque, NM
- Charlotte, NC

WETLAND IMPACT PLATES
FOR
STEPHEN'S CROSSING AT BRANDYWINE
15-NT-0395/201561897
BRANDYWINE BUSINESS PARK,
LOTS 2-21, 23-27, PARCELS A-C,
& OUTPARCEL A
PRINCE GEORGE'S COUNTY
MARYLAND



PROTECT YOURSELF
ALL STATES REQUIRE NOTIFICATION OF EXCAVATORS, DESIGNERS, OR ANY PERSON PREPARING TO DISTURB THE EARTH'S SURFACE ANYWHERE IN ANY STATE

Know what's below.
Call before you dig.
FOR STATE SPECIFIC DIRECT PHONE NUMBERS VISIT: WWW.CALL811.COM



STERLING OFFICE
22375 Braddock Drive
Suite 110
Sterling, VA 20166
Phone: 703.430.4330
Fax: 703.430.4339

REV: 09-25-23

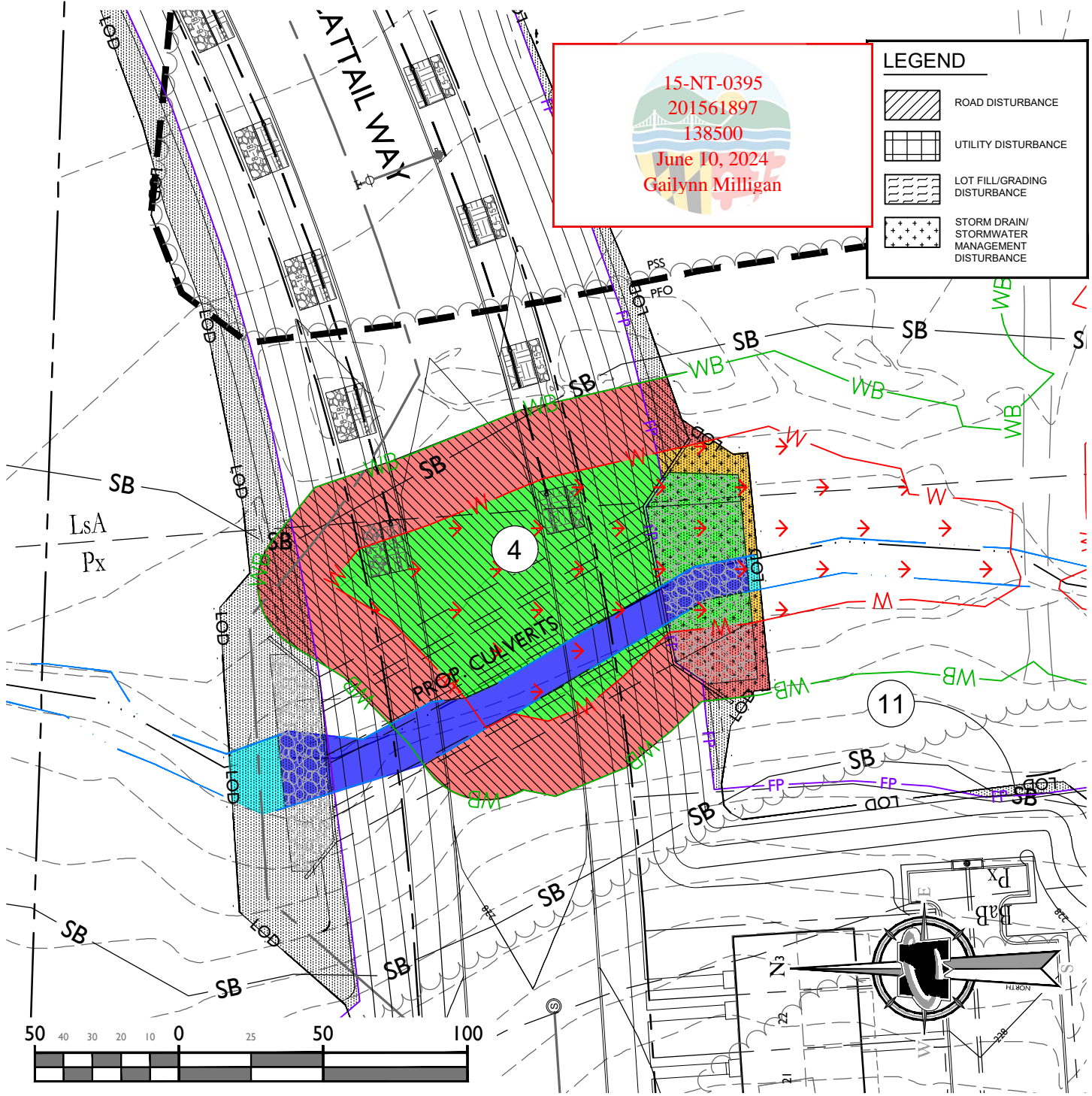
SCALE:	DATE: 03/27/24	DRAWN BY:	CHECKED BY:
AS SHOWN:	REVISION: 04/08/23	DHL/PJS	LWA/TJ
PROJECT NUMBER:	DRAWING NAME:		
20000831A	C-WETLAND IMPACT PLATES		
SHEET TITLE:			
IMPACT AREA No. 3 AND 13			
SHEET NUMBER:			
5 of 14			

15-NT-0395
201561897
138500
June 10, 2024
Gailynn Milligan

SEE PLATE 7		IMPACTS BY AREA NUMBER							SEE PLATE 10		GROUND ELEV. TO FLOOD-PLAIN ELEV. (CY OF FILL) (PERM)
IMPACT AREA No.	WETLAND TYPE	PFO WETLAND IMPACT(SF) (PERM)	PFO WETLAND IMPACT(SF) (TEMP)	PEM WETLAND IMPACT(SF) (PERM)	WETLAND BUFFER IMPACT(SF) (PERM)	WETLAND BUFFER IMPACT(SF) (TEMP)	WATERS OF US IMPACT (PERM) (LF)/(SF)	WATERS OF US IMPACT (TEMP) (LF)/(SF)	FLOOD-PLAIN IMPACT(SF) (PERM)	FLOOD-PLAIN IMPACT (SF) (TEMP)	
4	PFO	7,080	440	0	8,487	0	177/2,563	22/450	11,653	0	3,453
11	-	0	0	0	0	0	0	0	114	0	9

15-NT-0395
 201561897
 138500
 June 10, 2024
 Gailynn Milligan

LEGEND	
	ROAD DISTURBANCE
	UTILITY DISTURBANCE
	LOT FILL/GRADING DISTURBANCE
	STORM DRAIN/STORMWATER MANAGEMENT DISTURBANCE



SEE PLATE 9

MASER CONSULTING P.A.

Customer Loyalty through Client Satisfaction
 www.maserconsulting.com
 Engineers ■ Planners ■ Surveyors
 Landscape Architects ■ Environmental Scientists

Office Locations:

■ Red Bank, NJ	■ Lehigh Valley, PA
■ Clinton, NJ	■ Exton, PA
■ Hamilton, NJ	■ Philadelphia, PA
■ Egg Harbor, NJ	■ Pittsburgh, PA
■ Montvale, NJ	■ Tampa, FL
■ Mt. Arlington, NJ	■ Orlando, FL
■ Mt. Laurel, NJ	■ Miami, FL
■ Albany, NY	■ Sterling, VA
■ Newburgh, NY	■ Norfolk, VA
■ Hawthorne, NY	■ Albuquerque, NM
■ Columbia, MD	■ Charlotte, NC

Copyright © 2023, Maser Consulting P.A. All Rights Reserved. This drawing and all the information contained herein is authorized for use only by the party for whom the services were contracted or to whom it is certified. This drawing may not be copied, reused, disclosed, distributed or relied upon for any other purpose without the express written consent of Maser Consulting P.A.

WETLAND IMPACT PLATES
 FOR
 STEPHEN'S CROSSING AT
 BRANDYWINE
 15-NT-0395/201561897
 BRANDYWINE BUSINESS PARK,
 LOTS 2-21, 23-27, PARCELS A-C,
 & OUTPARCEL A
 PRINCE GEORGE'S COUNTY
 MARYLAND

811
 Know what's below.
 Call before you dig.
 FOR STATE SPECIFIC DIRECT PHONE NUMBERS
 VISIT: WWW.CALL811.COM

PROTECT YOURSELF
 ALL STATES REQUIRE NOTIFICATION
 OF EXCAVATORS, DESIGNERS, OR
 ANY PERSON PREPARING TO
 DISTURB THE EARTH'S SURFACE
 ANYWHERE IN ANY STATE

STERLING OFFICE
 22375 Br orderick Drive
 Suite 110
 Sterling, VA 20166
 Phone: 703.430.4330
 Fax: 703.430.4339

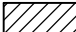

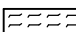
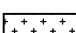
REV: 09-25-23

SCALE:	DATE: 09/25/23	DRAWN BY:	CHECKED BY:
AS SHOWN:	REVISION DATE: 09/25/23	DHL/PJS	LWA/TJ
PROJECT NUMBER:	DRAWING NAME:		
20000831A	C-WETLAND IMPACT PLATES		

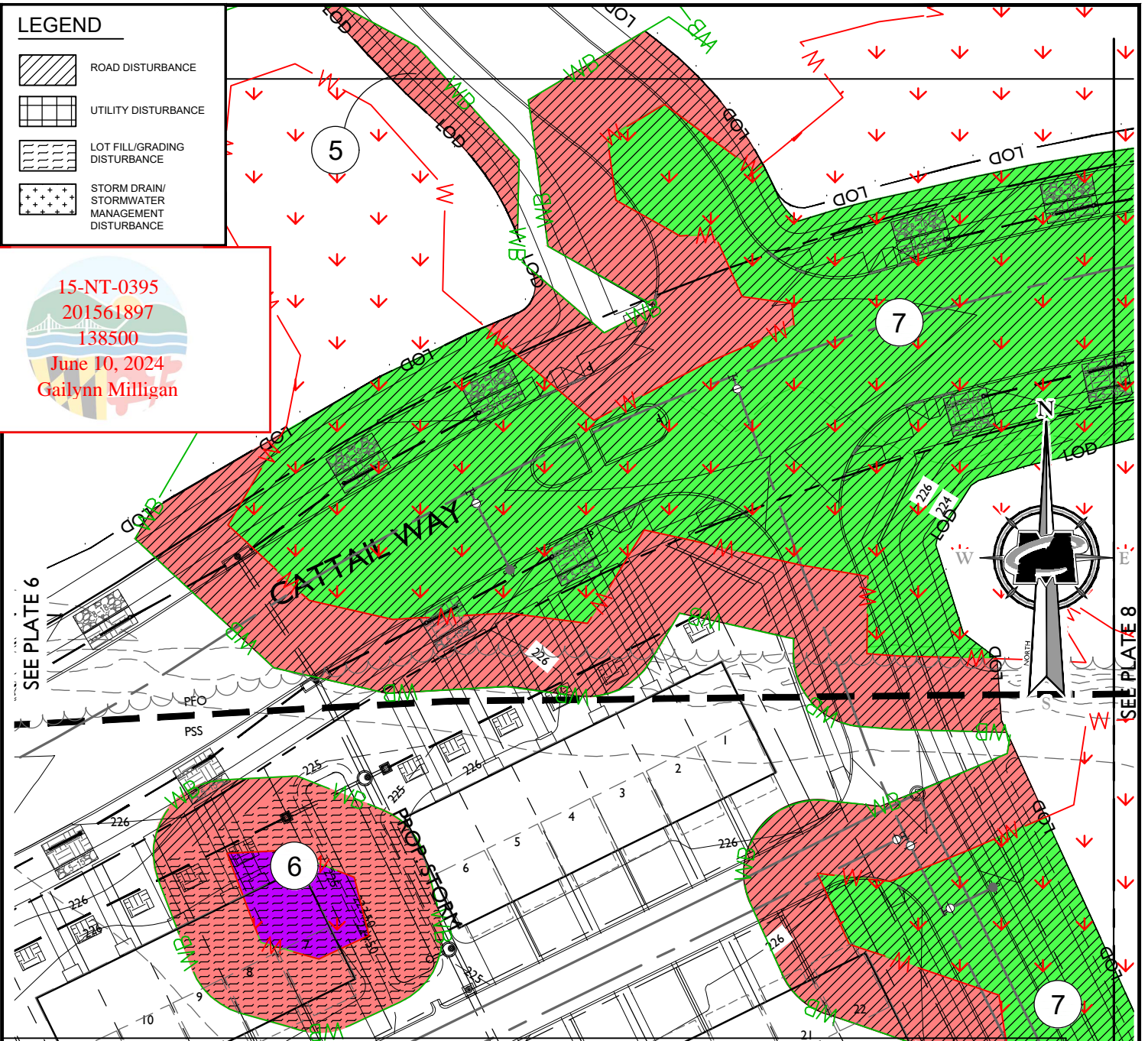
SHEET TITLE:
IMPACT AREA No. 4 AND 11

SHEET NUMBER:
 6 of 14

LEGEND

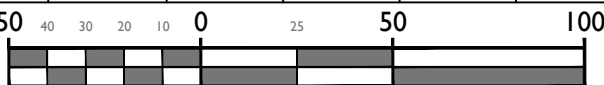
-  ROAD DISTURBANCE
-  UTILITY DISTURBANCE
-  LOT FILL/GRADING DISTURBANCE
-  STORM DRAIN/STORMWATER MANAGEMENT DISTURBANCE

15-NT-0395
201561897
138500
June 10, 2024
Gailynn Milligan



IMPACTS BY AREA NUMBER

IMPACT AREA No.	WETLAND TYPE	PFO WETLAND IMPACT(SF) (PERM)	PFO WETLAND IMPACT(SF) (TEMP)	PEM WETLAND IMPACT(SF) (PERM)	WETLAND BUFFER IMPACT(SF) (PERM)	WETLAND BUFFER IMPACT(SF) (TEMP)	WATERS OF US IMPACT (PERM) (LF)/(SF)	WATERS OF US IMPACT (TEMP) (LF)/(SF)	FLOOD-PLAIN IMPACT(SF) (PERM)	FLOOD-PLAIN IMPACT (SF) (TEMP)	GROUND ELEV. TO FLOOD-PLAIN ELEV. (CY OF FILL) (PERM)
5	PFO	0	0	0	1,045	0	0	0	0	0	0
6	PEM	0	0	1,215	5,406	0	0	0	0	0	0
7	PFO	71,340	0	0	40,158	0	0	0	0	0	0



SCALE : 1" = 50'

SEE PLATE 10



Customer Loyalty through Client Satisfaction
www.maserconsulting.com
 Engineers ■ Planners ■ Surveyors
 Landscape Architects ■ Environmental Scientists

- Office Locations:
- Red Bank, NJ
 - Clinton, NJ
 - Hamilton, NJ
 - Egg Harbor, NJ
 - Montvale, NJ
 - Mt. Arlington, NJ
 - Mt. Laurel, NJ
 - Albany, NY
 - Newburgh, NY
 - Hawthorne, NY
 - Columbia, MD
 - Lehigh Valley, PA
 - Exton, PA
 - Philadelphia, PA
 - Pittsburgh, PA
 - Tampa, FL
 - Orlando, FL
 - Miami, FL
 - Sterling, VA
 - Norfolk, VA
 - Albuquerque, NM
 - Charlotte, NC

WETLAND IMPACT PLATES
 FOR
STEPHEN'S CROSSING AT BRANDYWINE
 15-NT-0395/201561897
 BRANDYWINE BUSINESS PARK,
 LOTS 2-21, 23-27, PARCELS A-C,
 & OUTPARCEL A
 PRINCE GEORGE'S COUNTY
 MARYLAND



PROTECT YOURSELF
 ALL STATES REQUIRE NOTIFICATION OF EXCAVATORS, DESIGNERS, OR ANY PERSON PREPARING TO DISTURB THE EARTH'S SURFACE ANYWHERE IN ANY STATE
 Know what's below. Call before you dig.
 FOR STATE SPECIFIC DIRECT PHONE NUMBERS VISIT: WWW.CALL811.COM

REV: 09-25-23

SCALE: AS SHOWN	DATE: 03/27/23 REVISION: 04/18/23 REVISION: 04/20/23	DRAWN BY: DHL/PJS	CHECKED BY: LWA/TJ
PROJECT NUMBER: 20000831A	DRAWING NAME: C-WETLAND IMPACT PLATES		


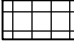
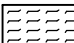
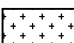
SHEET TITLE:
IMPACT AREA No. 5, 6 AND 7

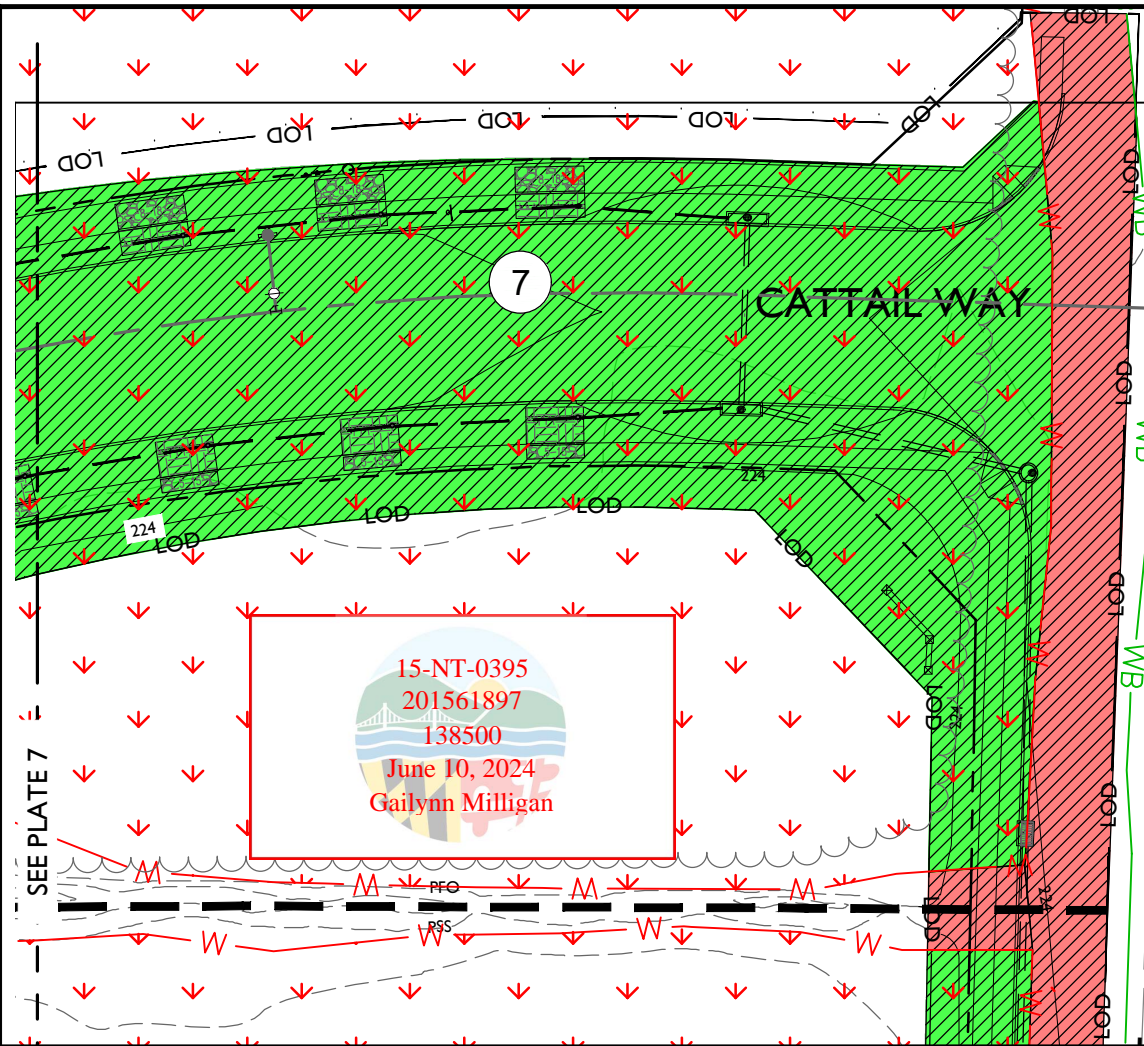
SHEET NUMBER:
 7 of 14



STERLING OFFICE
 22375 Broderick Drive
 Suite 110
 Sterling, VA 20166
 Phone: 703.430.4330
 Fax: 703.430.4339

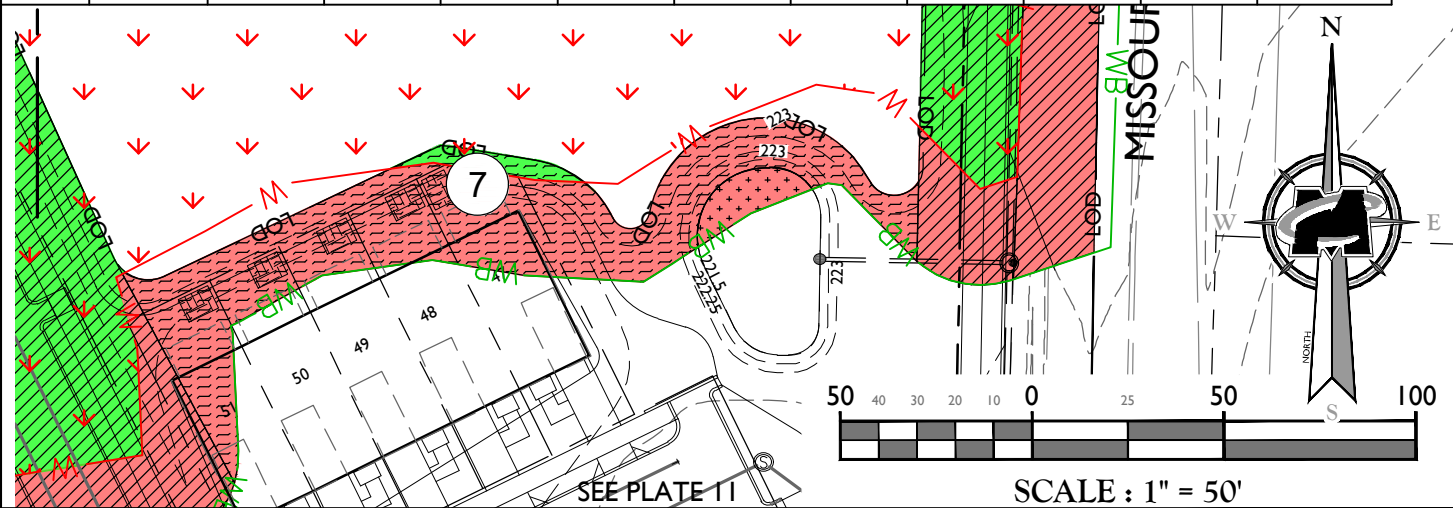
LEGEND

-  ROAD DISTURBANCE
-  UTILITY DISTURBANCE
-  LOT FILL/GRADING DISTURBANCE
-  STORM DRAIN/STORMWATER MANAGEMENT DISTURBANCE



IMPACTS BY AREA NUMBER

IMPACT AREA No.	WETLAND TYPE	PFO WETLAND IMPACT(SF) (PERM)	PFO WETLAND IMPACT(SF) (TEMP)	PEM WETLAND IMPACT(SF) (PERM)	WETLAND BUFFER IMPACT(SF) (PERM)	WETLAND BUFFER IMPACT(SF) (TEMP)	WATERS OF US IMPACT (PERM) (LF)/(SF)	WATERS OF US IMPACT (TEMP) (LF)/(SF)	FLOOD-PLAIN IMPACT(SF) (PERM)	FLOOD-PLAIN IMPACT (SF) (TEMP)	GROUND ELEV. TO FLOOD-PLAIN ELEV. (CY OF FILL) (PERM)
7	PFO	71,340	0	0	40,158	0	0	0	0	0	0



MASER CONSULTING P.A.

Customer Loyalty through Client Satisfaction
www.maserconsulting.com

Engineers ■ Planners ■ Surveyors
 Landscape Architects ■ Environmental Scientists

Office Locations:

- Red Bank, NJ
- Clinton, NJ
- Hamilton, NJ
- Egg Harbor, NJ
- Montvale, NJ
- Mt. Arlington, NJ
- Mt. Laurel, NJ
- Albany, NY
- Newburgh, NY
- Hawthorne, NY
- Columbia, MD
- Lehigh Valley, PA
- Exton, PA
- Philadelphia, PA
- Pittsburgh, PA
- Tampa, FL
- Orlando, FL
- Miami, FL
- Sterling, VA
- Norfolk, VA
- Albuquerque, NM
- Charlotte, NC

Copyright © 2023, Maser Consulting P.A. All Rights Reserved. This drawing and all the information contained herein is authorized for use only by the party for whom the services were contracted or to whom it is certified. This drawing may not be copied, reused, disclosed, distributed or relied upon for any other purpose without the express written consent of Maser Consulting P.A.

WETLAND IMPACT PLATES

FOR
STEPHEN'S CROSSING AT BRANDYWINE
 15-NT-0395/201561897
 BRANDYWINE BUSINESS PARK,
 LOTS 2-21, 23-27, PARCELS A-C,
 & OUTPARCEL A

PRINCE GEORGE'S COUNTY
 MARYLAND

811
 Know what's below.
 Call before you dig.
 FOR STATE SPECIFIC DIRECT PHONE NUMBERS VISIT: WWW.CALL811.COM

PROTECT YOURSELF
 ALL STATES REQUIRE NOTIFICATION OF EXCAVATORS, DESIGNERS, OR ANY PERSON PREPARING TO DISTURB THE EARTH'S SURFACE ANYWHERE IN ANY STATE

STERLING OFFICE
 22375 Broadrick Drive
 Suite 110
 Sterling, VA 20166
 Phone: 703.430.4330
 Fax: 703.430.4339

REV: 09-25-23

SCALE: AS SHOWN	DATE: 09/25/23 REVISION: 04/28/23 REVISION: 04/28/23	DRAWN BY: DHL/PJS	CHECKED BY: LWA/TJ
PROJECT NUMBER: 20000831A	DRAWING NAME: C-WETLAND IMPACT PLATES		

SHEET TITLE:
IMPACT AREA No. 7

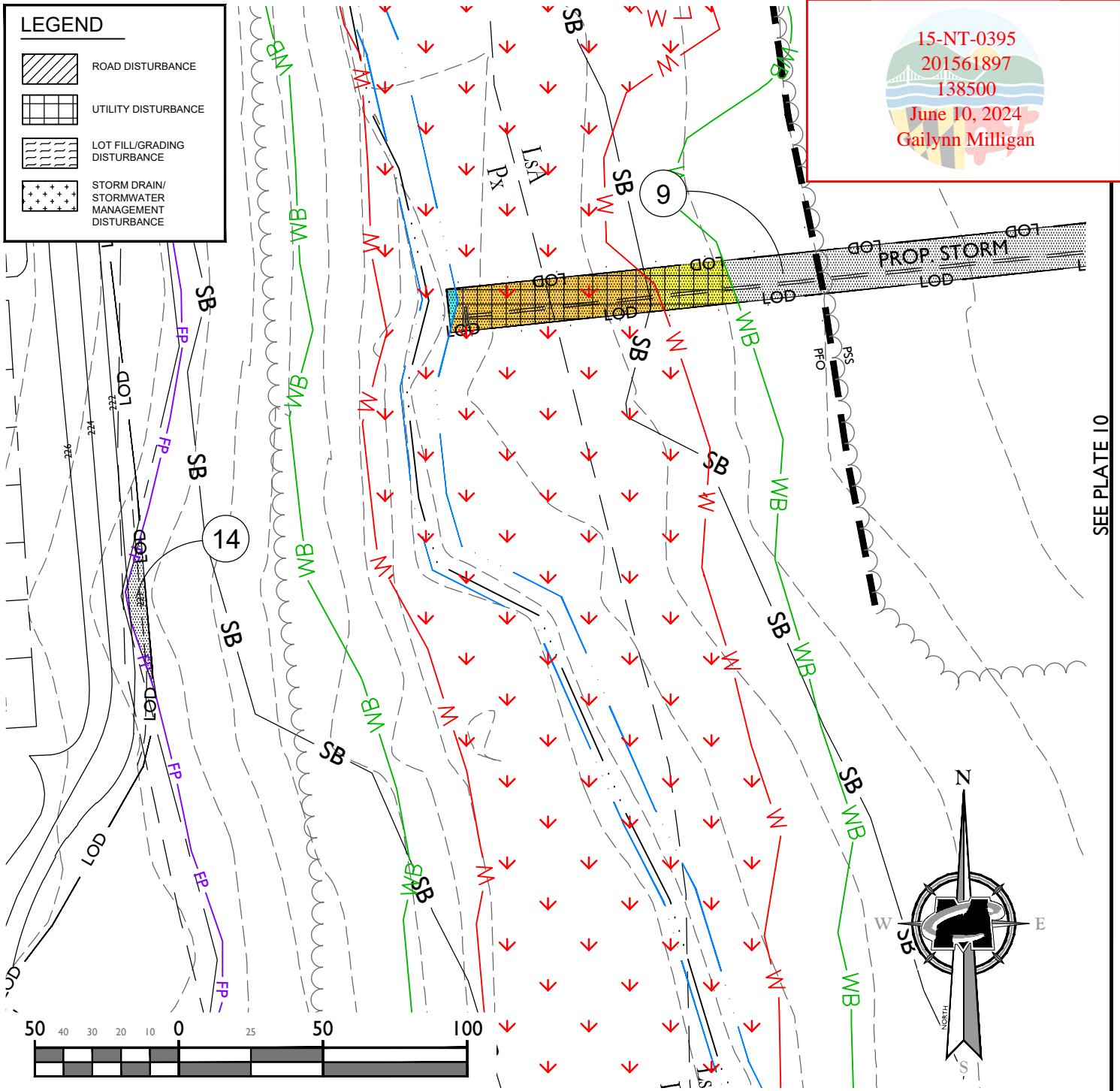
SHEET NUMBER:
8 of 14

IMPACTS BY AREA NUMBER SEE PLATE 6											
IMPACT AREA No.	WETLAND TYPE	PFO WETLAND IMPACT(SF) (PERM)	PFO WETLAND IMPACT(SF) (TEMP)	PEM WETLAND IMPACT(SF) (PERM)	WETLAND BUFFER IMPACT(SF) (PERM)	WETLAND BUFFER IMPACT(SF) (TEMP)	WATERS OF US IMPACT (PERM) (LF)/(SF)	WATERS OF US IMPACT (TEMP) (LF)/(SF)	FLOOD-PLAIN IMPACT(SF) (PERM)	FLOOD-PLAIN IMPACT (SF) (TEMP)	GROUND ELEV. TO FLOOD-PLAIN ELEV. (CY OF FILL) (PERM)
9	PFO	0	1,046	0	0	397	0	9/30	0	4,096	0
14	-	0	0	0	0	0	0	0	205	0	15

15-NT-0395
201561897
138500
June 10, 2024
Gailynn Milligan

LEGEND

- ROAD DISTURBANCE
- UTILITY DISTURBANCE
- LOT FILL/GRADING DISTURBANCE
- STORM DRAIN/STORMWATER MANAGEMENT DISTURBANCE



SEE PLATE 10

MASER CONSULTING P.A.

Customer Loyalty through Client Satisfaction
www.maserconsulting.com

Engineers ■ Planners ■ Surveyors
Landscape Architects ■ Environmental Scientists

Office Locations:

- Red Bank, NJ
- Clinton, NJ
- Hamilton, NJ
- Egg Harbor, NJ
- Montvale, NJ
- Mt. Arlington, NJ
- Mt. Laurel, NJ
- Albany, NY
- Newburgh, NY
- Hawthorne, NY
- Columbia, MD
- Lehigh Valley, PA
- Exton, PA
- Philadelphia, PA
- Pittsburgh, PA
- Tampa, FL
- Orlando, FL
- Miami, FL
- Sterling, VA
- Norfolk, VA
- Albuquerque, NM
- Charlotte, NC

Copyright © 2023, Maser Consulting P.A. All Rights Reserved. This drawing and all the information contained herein is authorized for use only by the party for whom the services were contracted or to whom it is certified. This drawing may not be copied, reused, disclosed, distributed or relied upon for any other purpose without the express written consent of Maser Consulting P.A.

WETLAND IMPACT PLATES

FOR

STEPHEN'S CROSSING AT BRANDYWINE

15-NT-0395/201561897

BRANDYWINE BUSINESS PARK,
LOTS 2-21, 23-27, PARCELS A-C,
& OUTPARCEL A

PRINCE GEORGE'S COUNTY
MARYLAND

811

PROTECT YOURSELF
ALL STATES REQUIRE NOTIFICATION OF EXCAVATORS, DESIGNERS, OR ANY PERSON PREPARING TO DISTURB THE EARTH'S SURFACE ANYWHERE IN ANY STATE

Know what's below.
Call before you dig.
FOR STATE SPECIFIC DIRECT PHONE NUMBERS VISIT: WWW.CALL811.COM

STERLING OFFICE
22375 Br oderrick Drive
Suite 110
Sterling, VA 20166
Phone: 703.430.4330
Fax: 703.430.4339

REV: 09-25-23

SCALE: AS SHOWN	DATE: 03/27/21 REVISION: 04/16/21 REVISION: 04/16/21	DRAWN BY: DHL/PJS	CHECKED BY: LWA/TJ
PROJECT NUMBER: 20000831A	DRAWING NAME: C-WETLAND IMPACT PLATES		

SHEET TITLE: IMPACT AREA No. 9 AND 14

SHEET NUMBER: 9 of 14

15-NT-0395
201561897
138500
June 10, 2024
Gailynn Milligan

SEE PLATE 7

PRE-TEEN LOT #3

LOT #4

SEE PLATE 6

15

9

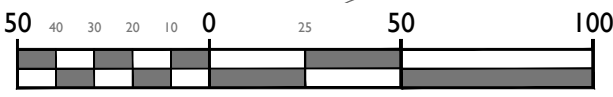
PROP. STORMWATER POND

PROP. STORM

SEE PLATE 11



SEE PLATE 9



SCALE : 1" = 50'

LEGEND	
	ROAD DISTURBANCE
	UTILITY DISTURBANCE
	LOT FILL/GRADING DISTURBANCE
	STORM DRAIN/STORMWATER MANAGEMENT DISTURBANCE

IMPACTS BY AREA NUMBER

IMPACT AREA No.	WETLAND TYPE	PFO WETLAND IMPACT(SF) (PERM)	PFO WETLAND IMPACT(SF) (TEMP)	PEM WETLAND IMPACT(SF) (PERM)	WETLAND BUFFER IMPACT(SF) (PERM)	WETLAND BUFFER IMPACT(SF) (TEMP)	WATERS OF US IMPACT (PERM) (LF)/(SF)	WATERS OF US IMPACT (TEMP) (LF)/(SF)	FLOOD-PLAIN IMPACT(SF) (PERM)	FLOOD-PLAIN IMPACT (SF) (TEMP)	GROUND ELEV. TO FLOOD-PLAIN ELEV. (CY OF FILL) (PERM)
7	PFO	71,340	0	0	40,158	0	0	0	0	0	0
9	PFO	0	1,046	0	0	397	0	9/30	0	4,096	0
15	-	0	0	0	0	0	0	0	894	0	100



Customer Loyalty through Client Satisfaction
www.maserconsulting.com
Engineers ■ Planners ■ Surveyors
Landscape Architects ■ Environmental Scientists

- Office Locations:
- Red Bank, NJ
 - Clinton, NJ
 - Hamilton, NJ
 - Egg Harbor, NJ
 - Montvale, NJ
 - Mt. Arlington, NJ
 - Mt. Laurel, NJ
 - Albany, NY
 - Newburgh, NY
 - Hawthorne, NY
 - Columbia, MD
 - Lehigh Valley, PA
 - Exton, PA
 - Philadelphia, PA
 - Pittsburgh, PA
 - Tampa, FL
 - Orlando, FL
 - Miami, FL
 - Sterling, VA
 - Norfolk, VA
 - Albuquerque, NM
 - Charlotte, NC

WETLAND IMPACT PLATES
FOR
STEPHEN'S CROSSING AT
BRANDYWINE
15-NT-0395/201561897
BRANDYWINE BUSINESS PARK,
LOTS 2-21, 23-27, PARCELS A-C,
& OUTPARCEL A
PRINCE GEORGE'S COUNTY
MARYLAND



PROTECT YOURSELF
ALL STATES REQUIRE NOTIFICATION
OF EXCAVATORS, DESIGNERS, OR
ANY PERSON PREPARING TO
DISTURB THE EARTH'S SURFACE
ANYWHERE IN ANY STATE
Know what's below.
Call before you dig.
FOR STATE SPECIFIC DIRECT PHONE NUMBERS
VISIT: WWW.CALL811.COM

REV: 09-25-23

SCALE	DATE 03/21/23	DRAWN BY:	CHECKED BY:
AS SHOWN	REVISION 04/28/23	DHL/PJS	LWA/TJ
PROJECT NUMBER	DRAWING NAME		
20000831A	C-WETLAND IMPACT PLATES		

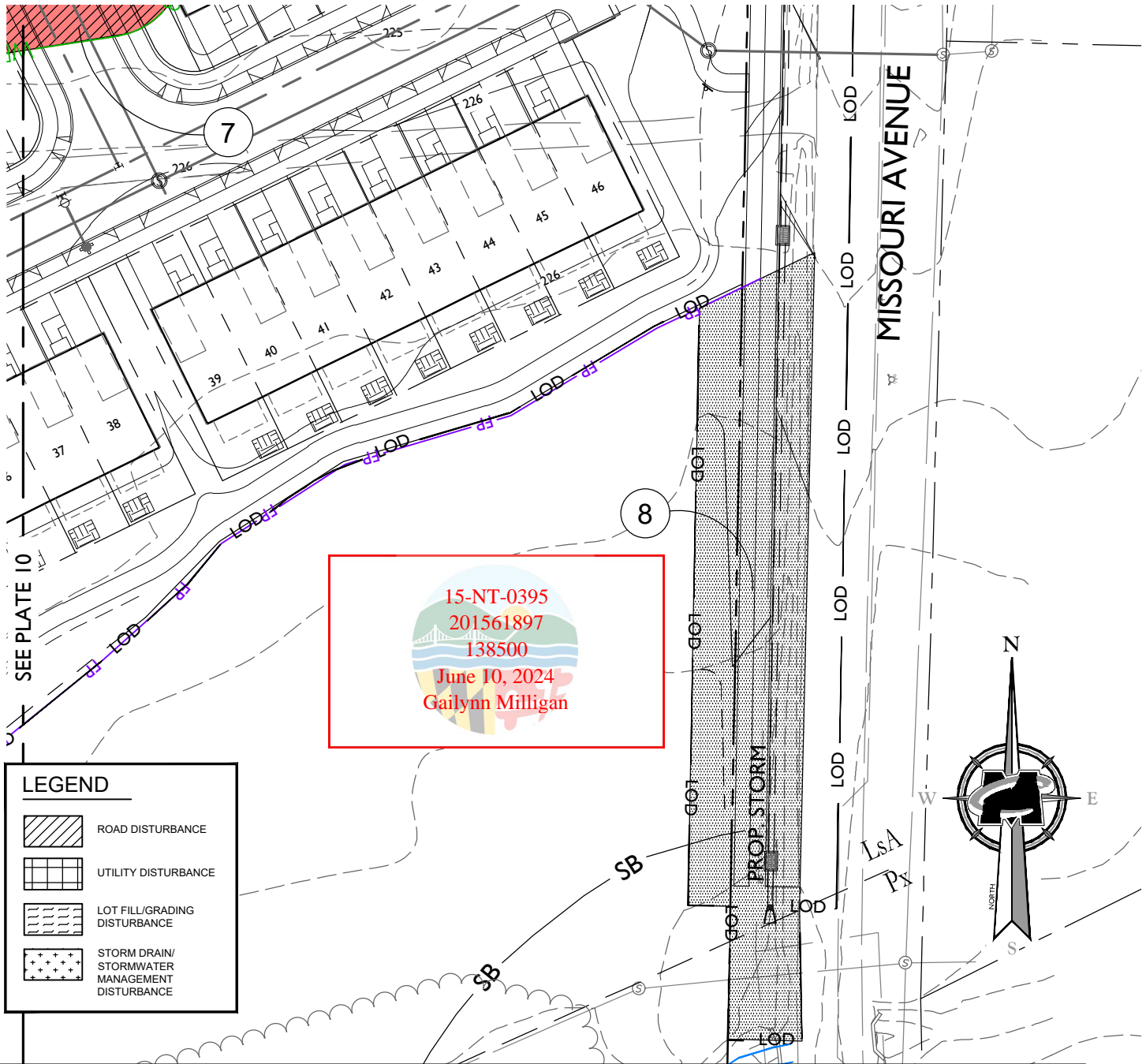
SHEET TITLE:
IMPACT AREA No. 7, 9
AND 15

SHEET NUMBER:
10 of 14



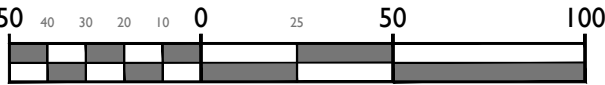
STERLING OFFICE
22375 Braddock Drive
Suite 110
Sterling, VA 20166
Phone: 703.430.4330
Fax: 703.430.4339

SEE PLATE 8



IMPACTS BY AREA NUMBER

IMPACT AREA No.	WETLAND TYPE	PFO WETLAND IMPACT(SF) (PERM)	PFO WETLAND IMPACT(SF) (TEMP)	PEM WETLAND IMPACT(SF) (PERM)	WETLAND BUFFER IMPACT(SF) (PERM)	WETLAND BUFFER IMPACT(SF) (TEMP)	WATERS OF US IMPACT (PERM) (LF)/(SF)	WATERS OF US IMPACT (TEMP) (LF)/(SF)	FLOOD-PLAIN IMPACT(SF) (PERM)	FLOOD-PLAIN IMPACT (SF) (TEMP)	GROUND ELEV. TO FLOOD-PLAIN ELEV. (CY OF FILL) (PERM)
7	PFO	71,340	0	0	40,158	0	0	0	0	0	0
8	-	0	0	0	0	0	0	0	8,721	0	646



SCALE : 1" = 50'

MASER
CONSULTING P.A.

Customer Loyalty through Client Satisfaction
www.maserconsulting.com

Engineers ■ Planners ■ Surveyors
Landscape Architects ■ Environmental Scientists

Office Locations:

■ Red Bank, NJ	■ Lehigh Valley, PA
■ Clinton, NJ	■ Exton, PA
■ Hamilton, NJ	■ Philadelphia, PA
■ Egg Harbor, NJ	■ Pittsburgh, PA
■ Montvale, NJ	■ Tampa, FL
■ Mt. Arlington, NJ	■ Orlando, FL
■ Mt. Laurel, NJ	■ Miami, FL
■ Albany, NY	■ Sterling, VA
■ Newburgh, NY	■ Norfolk, VA
■ Hawthorne, NY	■ Albuquerque, NM
■ Columbia, MD	■ Charlotte, NC

Copyright © 2023, Maser Consulting P.A. All Rights Reserved. This drawing and all the information contained herein is authorized for use only by the party for whom the services were contracted or to whom it is certified. This drawing may not be copied, reused, disclosed, distributed or relied upon for any other purpose without the express written consent of Maser Consulting P.A.

WETLAND IMPACT PLATES

FOR
STEPHEN'S CROSSING AT BRANDYWINE

15-NT-0395/201561897

BRANDYWINE BUSINESS PARK,
LOTS 2-21, 23-27, PARCELS A-C,
& OUTPARCEL A

PRINCE GEORGE'S COUNTY
MARYLAND

Know what's below.
Call before you dig.

FOR STATE SPECIFIC DIRECT PHONE NUMBERS
VISIT: WWW.CALL811.COM

PROTECT YOURSELF
ALL STATES REQUIRE NOTIFICATION OF EXCAVATORS, DESIGNERS, OR ANY PERSON PREPARING TO DISTURB THE EARTH'S SURFACE ANYWHERE IN ANY STATE

STERLING OFFICE
23375 Broderick Drive
Suite 110
Sterling, VA 20166

Phone: 703.430.4330
Fax: 703.430.4339

REV: 09-25-23

SCALE:	DATE: 03/27/23	DRAWN BY:	CHECKED BY:
AS SHOWN:	REVISION: 04/18/23	DHL/PJS	LWA/TJ
PROJECT NUMBER:	DRAWING NAME:		
20000831A	C-WETLAND IMPACT PLATES		

SHEET TITLE:

IMPACT AREA No. 7 AND 8



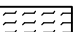
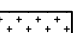
SHEET NUMBER:

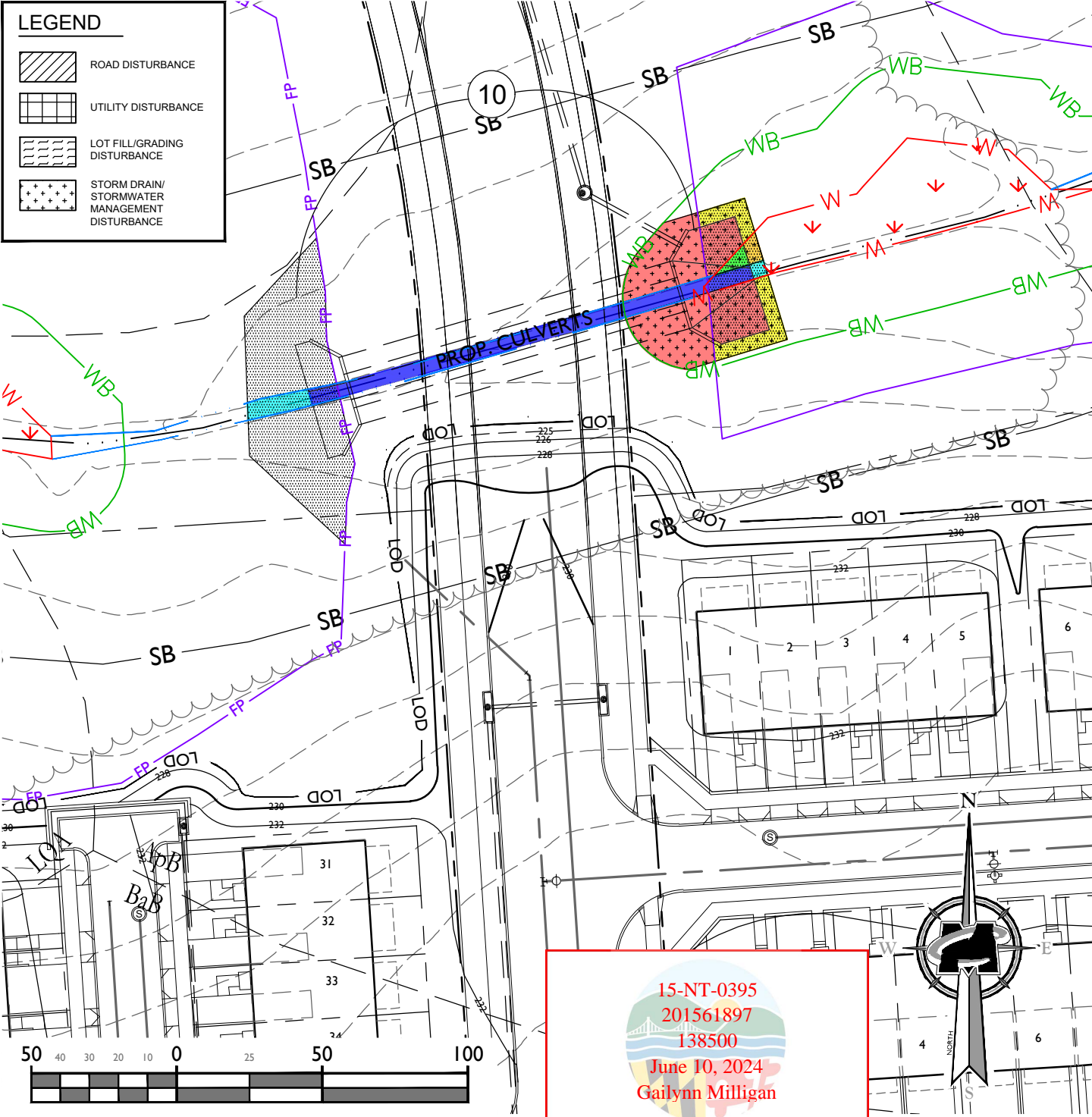
11 of 14

IMPACTS BY AREA NUMBER

IMPACT AREA No.	WETLAND TYPE	PFO WETLAND IMPACT(SF) (PERM)	PFO WETLAND IMPACT(SF) (TEMP)	PEM WETLAND IMPACT(SF) (PERM)	WETLAND BUFFER IMPACT(SF) (PERM)	WETLAND BUFFER IMPACT(SF) (TEMP)	WATERS OF US IMPACT (PERM) (LF)/(SF)	WATERS OF US IMPACT (TEMP) (LF)/(SF)	FLOOD-PLAIN IMPACT(SF) (PERM)	FLOOD-PLAIN IMPACT(SF) (TEMP)	GROUND ELEV. TO FLOOD-PLAIN ELEV. (CY OF FILL) (PERM)
10	PFO	46	44	0	1,592	349	157/790	27/160	3,476	0	129

LEGEND

-  ROAD DISTURBANCE
-  UTILITY DISTURBANCE
-  LOT FILL/GRADING DISTURBANCE
-  STORM DRAIN/STORMWATER MANAGEMENT DISTURBANCE



15-NT-0395
 201561897
 138500
 June 10, 2024
 Gailynn Milligan

MASER CONSULTING P.A.

Customer Loyalty through Client Satisfaction
 www.maserconsulting.com

Engineers ■ Planners ■ Surveyors
 Landscape Architects ■ Environmental Scientists

Office Locations:

- Red Bank, NJ
- Lehigh Valley, PA
- Clinton, NJ
- Exton, PA
- Hamilton, NJ
- Philadelphia, PA
- Egg Harbor, NJ
- Pittsburgh, PA
- Montvale, NJ
- Tampa, FL
- Mt. Arlington, NJ
- Orlando, FL
- Mt. Laurel, NJ
- Miami, FL
- Albany, NY
- Sterling, VA
- Newburgh, NY
- Norfolk, VA
- Hawthorne, NY
- Albuquerque, NM
- Columbia, MD
- Charlotte, NC

Copyright © 2023, Maser Consulting P.A. All Rights Reserved. This drawing and all the information contained herein is authorized for use only by the party for whom the services were contracted or to whom it is certified. This drawing may not be copied, reused, disclosed, distributed or relied upon for any other purpose without the express written consent of Maser Consulting P.A.

WETLAND IMPACT PLATES

FOR
 STEPHEN'S CROSSING AT
 BRANDYWINE
 15-NT-0395/201561897
 BRANDYWINE BUSINESS PARK,
 LOTS 2-21, 23-27, PARCELS A-C,
 & OUTPARCEL A

PRINCE GEORGE'S COUNTY
 MARYLAND

811

Know what's below.
 Call before you dig.

PROTECT YOURSELF
 ALL STATES REQUIRE NOTIFICATION
 OF EXCAVATORS, DESIGNERS, OR
 ANY PERSON PREPARING TO
 DISTURB THE EARTH'S SURFACE
 ANYWHERE IN ANY STATE

FOR STATE SPECIFIC DIRECT PHONE NUMBERS
 VISIT: WWW.CALL811.COM

STERLING OFFICE
 22375 Br orderick Drive
 Suite 110
 Sterling, VA 20166
 Phone: 703.430.4330
 Fax: 703.430.4339

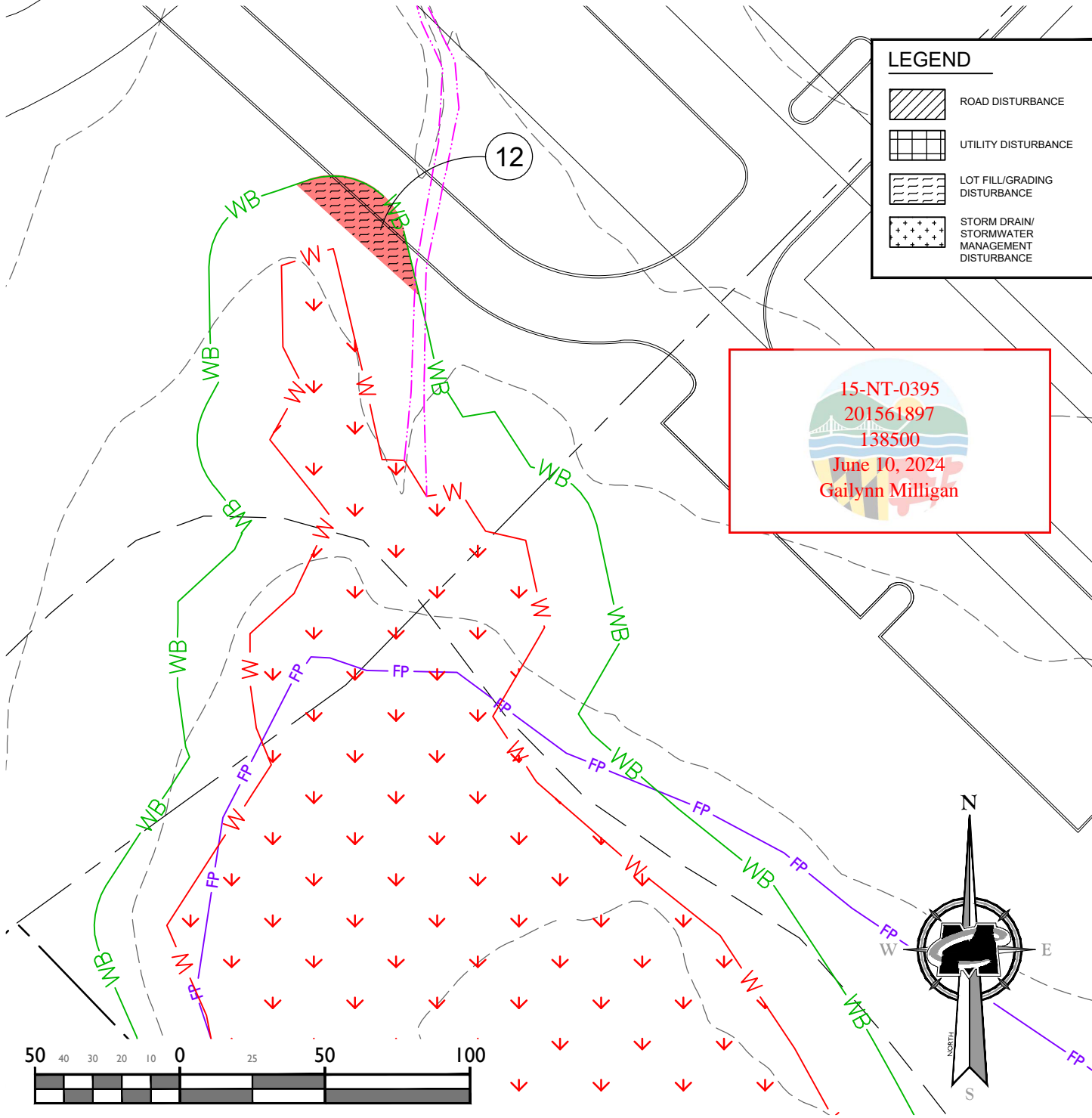
REV: 09-25-23

SCALE:	DATE: 03/27/23	DRAWN BY:	CHECKED BY:
AS SHOWN	REVISION: 04/18/23	DHL/PJS	LWA/TJ
PROJECT NUMBER:	DRAWING NAME:		
20000831A	C-WETLAND IMPACT PLATES		

SHEET TITLE:
IMPACT AREA No. 10

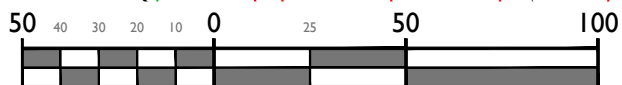
SHEET NUMBER:
 12 of 14

IMPACTS BY AREA NUMBER											SEE PLATE 3
IMPACT AREA No.	WETLAND TYPE	PFO WETLAND IMPACT(SF) (PERM)	PFO WETLAND IMPACT(SF) (TEMP)	PEM WETLAND IMPACT(SF) (PERM)	WETLAND BUFFER IMPACT(SF) (PERM)	WETLAND BUFFER IMPACT(SF) (TEMP)	WATERS OF US IMPACT (PERM) (LF)/(SF)	WATERS OF US IMPACT (TEMP) (LF)/(SF)	FLOOD-PLAIN IMPACT(SF) (PERM)	FLOOD-PLAIN IMPACT (SF) (TEMP)	GROUND ELEV. TO FLOOD-PLAIN ELEV. (CY OF FILL) (PERM)
12	-	0	0	0	631	0	0	0	0	0	0



LEGEND	
	ROAD DISTURBANCE
	UTILITY DISTURBANCE
	LOT FILL/GRADING DISTURBANCE
	STORM DRAIN/STORMWATER MANAGEMENT DISTURBANCE

15-NT-0395
 201561897
 138500
 June 10, 2024
 Gailynn Milligan



SCALE : 1" = 50'

MASER CONSULTING P.A.

Customer Loyalty through Client Satisfaction
www.maserconsulting.com
 Engineers ■ Planners ■ Surveyors
 Landscape Architects ■ Environmental Scientists

Office Locations:

■ Red Bank, NJ	■ Lehigh Valley, PA
■ Clinton, NJ	■ Exton, PA
■ Hamilton, NJ	■ Philadelphia, PA
■ Egg Harbor, NJ	■ Pittsburgh, PA
■ Montvale, NJ	■ Tampa, FL
■ Mt. Arlington, NJ	■ Orlando, FL
■ Mt. Laurel, NJ	■ Miami, FL
■ Albany, NY	■ Sterling, VA
■ Newburgh, NY	■ Norfolk, VA
■ Hawthorne, NY	■ Albuquerque, NM
■ Columbia, MD	■ Charlotte, NC

Copyright © 2023, Maser Consulting P.A. All Rights Reserved. This drawing and all the information contained herein is authorized for use only by the party for whom the services were contracted or to whom it is certified. This drawing may not be copied, reused, disclosed, distributed or relied upon for any other purpose without the express written consent of Maser Consulting P.A.

WETLAND IMPACT PLATES
 FOR
 STEPHEN'S CROSSING AT
 BRANDYWINE
 15-NT-0395/201561897
 BRANDYWINE BUSINESS PARK,
 LOTS 2-21, 23-27, PARCELS A-C,
 & OUTPARCEL A
 PRINCE GEORGE'S COUNTY
 MARYLAND

811
 Know what's below.
 Call before you dig.
 FOR STATE SPECIFIC DIRECT PHONE NUMBERS
 VISIT: WWW.CALL811.COM


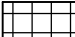
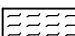
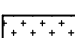
PROTECT YOURSELF
 ALL STATES REQUIRE NOTIFICATION
 OF EXCAVATORS, DESIGNERS, OR
 ANY PERSON PREPARING TO
 DISTURB THE EARTH'S SURFACE
 ANYWHERE IN ANY STATE

STERLING OFFICE
 22375 Br odereck Drive
 Suite 110
 Sterling, VA 20166
 Phone: 703.430.4330
 Fax: 703.430.4339

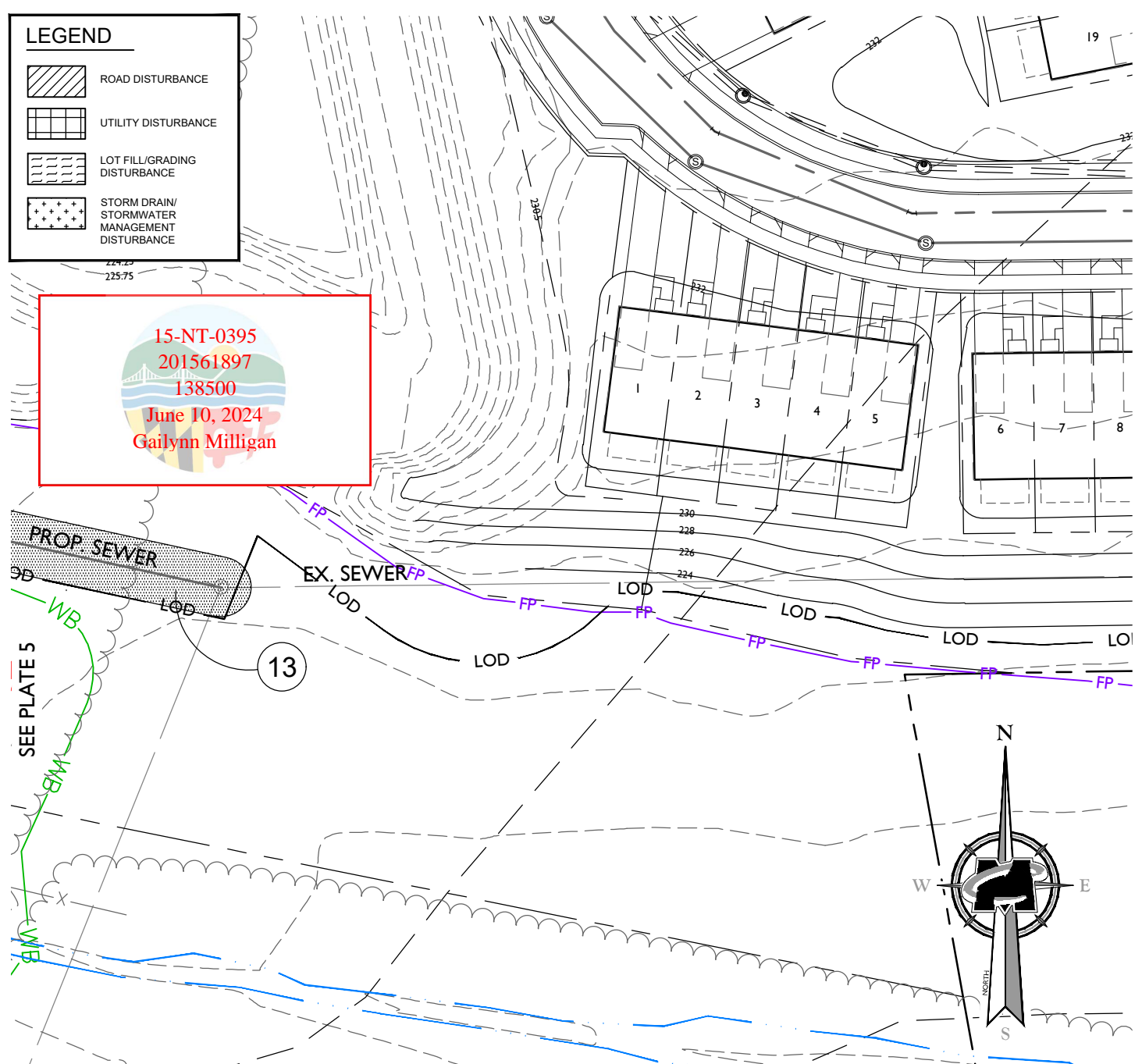
REV: 09-25-23

SCALE: AS SHOWN	DATE: 03/17/23 REVISION: 04/10/2023 REVISION: 04/10/2023	DRAWN BY: DHL/PJS	CHECKED BY: LWA/TJ
PROJECT NUMBER: 20000831A	DRAWING NAME: C-WETLAND IMPACT PLATES		
SHEET TITLE: IMPACT AREA No. 12			
SHEET NUMBER: 13 of 14			

LEGEND

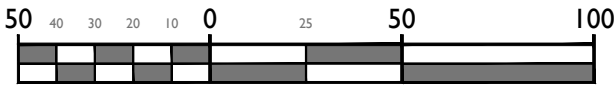
-  ROAD DISTURBANCE
-  UTILITY DISTURBANCE
-  LOT FILL/GRADING DISTURBANCE
-  STORM DRAIN/STORMWATER MANAGEMENT DISTURBANCE

15-NT-0395
 201561897
 138500
 June 10, 2024
 Gailynn Milligan



IMPACTS BY AREA NUMBER

IMPACT AREA No.	WETLAND TYPE	PFO WETLAND IMPACT(SF) (PERM)	PFO WETLAND IMPACT(SF) (TEMP)	PEM WETLAND IMPACT(SF) (PERM)	WETLAND BUFFER IMPACT(SF) (PERM)	WETLAND BUFFER IMPACT(SF) (TEMP)	WATERS OF US IMPACT (PERM) (LF)/(SF)	WATERS OF US IMPACT (TEMP) (LF)/(SF)	FLOOD-PLAIN IMPACT(SF) (PERM)	FLOOD-PLAIN IMPACT (SF) (TEMP)	GROUND ELEV. TO FLOOD-PLAIN ELEV. (CY OF FILL) (PERM)
13	-	0	0	0	0	906	0	0	0	3,720	0



SCALE : 1" = 50'



Customer Loyalty through Client Satisfaction
www.maserconsulting.com
 Engineers ■ Planners ■ Surveyors
 Landscape Architects ■ Environmental Scientists

- Office Locations:
- Red Bank, NJ
 - Clinton, NJ
 - Hamilton, NJ
 - Egg Harbor, NJ
 - Montvale, NJ
 - Mt. Arlington, NJ
 - Mt. Laurel, NJ
 - Albany, NY
 - Newburgh, NY
 - Hawthorne, NY
 - Columbia, MD
 - Lehigh Valley, PA
 - Exton, PA
 - Philadelphia, PA
 - Pittsburgh, PA
 - Tampa, FL
 - Orlando, FL
 - Miami, FL
 - Sterling, VA
 - Norfolk, VA
 - Albuquerque, NM
 - Charlotte, NC

WETLAND IMPACT PLATES
 FOR
 STEPHEN'S CROSSING AT
 BRANDYWINE
 15-NT-0395/201561897
 BRANDYWINE BUSINESS PARK,
 LOTS 2-21, 23-27, PARCELS A-C,
 & OUTPARCEL A
 PRINCE GEORGE'S COUNTY
 MARYLAND



Know what's below.
 Call before you dig.
 FOR STATE SPECIFIC DIRECT PHONE NUMBERS
 VISIT: WWW.CALL811.COM

PROTECT YOURSELF
 ALL STATES REQUIRE NOTIFICATION
 OF EXCAVATORS, DESIGNERS, OR
 ANY PERSON PREPARING TO
 DISTURB THE EARTH'S SURFACE
 ANYWHERE IN ANY STATE



STERLING OFFICE
 22375 Br orderick Drive
 Suite 110
 Sterling, VA 20166
 Phone: 703.430.4330
 Fax: 703.430.4339

REV: 09-25-23

SCALE	DATE 03/17/21	DRAWN BY	CHECKED BY
AS SHOWN	REVISION 04/18/21	DHL/PJS	LWA/TJ
PROJECT NUMBER	DRAWING NAME		
20000831A	C-WETLAND IMPACT PLATES		

SHEET TITLE:
IMPACT AREA No. 13

SHEET NUMBER:
14 of 14

Copyright © 2023, Maser Consulting P.A. All Rights Reserved. This drawing and all the information contained herein is authorized for use only by the party for whom the services were contracted or to whom it is certified. This drawing may not be copied, reused, disclosed, distributed or relied upon for any other purpose without the express written consent of Maser Consulting P.A.