

Priority Sites for Biodiversity Based Wetland Restoration in the Pocomoke Watershed of Worcester County

GIS layers used in ranking sites for potential wetland restoration:

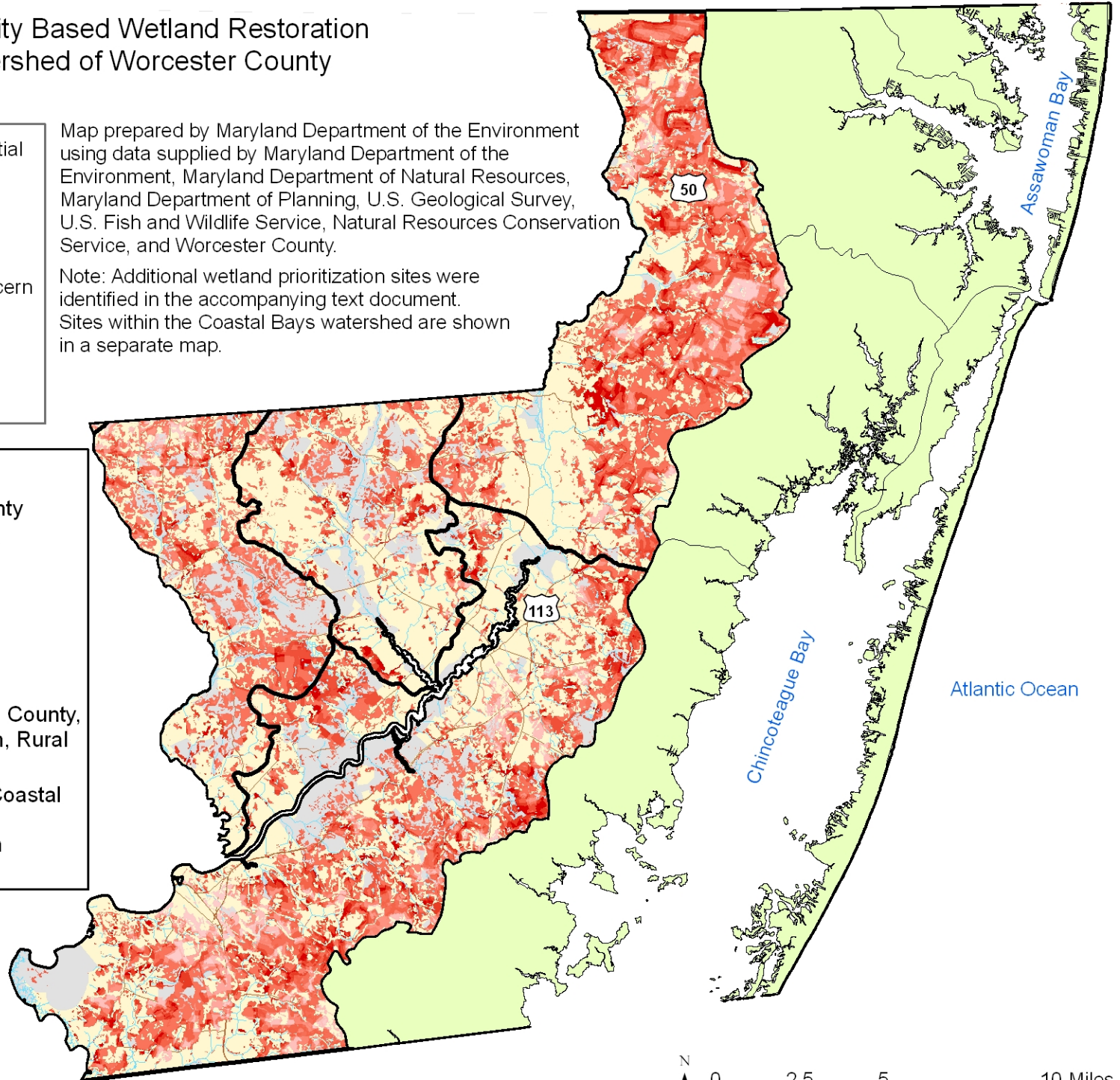
- Green Infrastructure
- Land use
- Streams and 100m buffer
- Scenic Rivers
- Nontidal Wetlands of Special State Concern (NTWSSC) and potential NTWSSC
- Soils w/ drainage of SPD, PD, VPD
- Prime farmland
- Development areas
- Existing wetlands (DNR, NWI)

Map prepared by Maryland Department of the Environment using data supplied by Maryland Department of the Environment, Maryland Department of Natural Resources, Maryland Department of Planning, U.S. Geological Survey, U.S. Fish and Wildlife Service, Natural Resources Conservation Service, and Worcester County.

Note: Additional wetland prioritization sites were identified in the accompanying text document. Sites within the Coastal Bays watershed are shown in a separate map.

Legend

- Watersheds in Worcester County
- Potential wetland restoration sites
 - Higher ranking
 - Lower ranking
- Roads
- Water
- Protected land (State, Federal, County, METs, Private Conservation, Rural Legacy Easements)
- Worcester County, excluding Coastal Bays watershed
- Coastal Bays watershed within Worcester County



Robert L. Ehrlich, Jr., *Governor*
 Michael S. Steele, *Lt. Governor*
 Kendal P. Philbrick, *Secretary*
 Jonas A. Jacobson, *Deputy Secretary*

