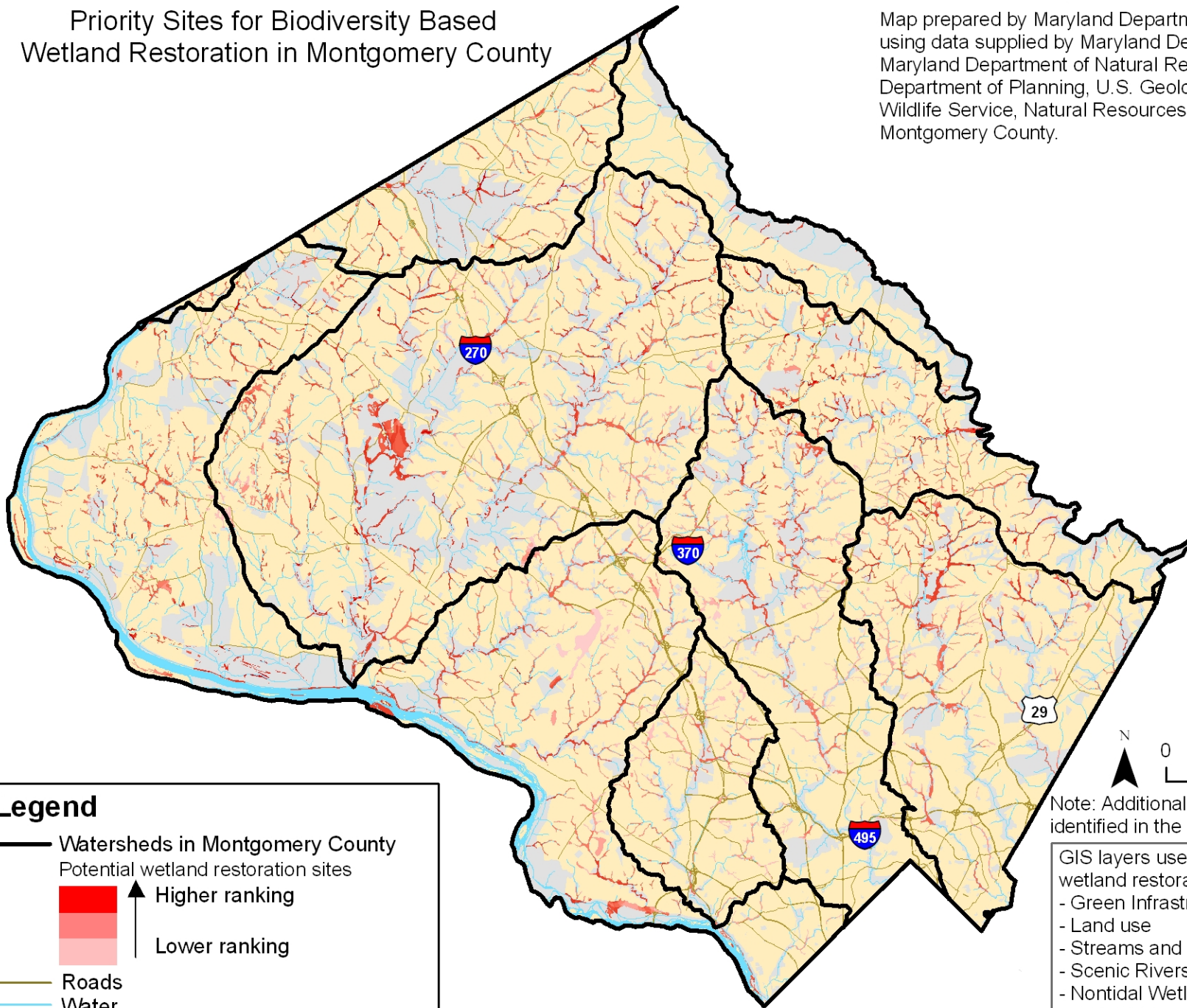


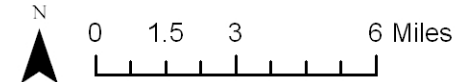
Priority Sites for Biodiversity Based Wetland Restoration in Montgomery County

Map prepared by Maryland Department of the Environment using data supplied by Maryland Department of the Environment, Maryland Department of Natural Resources, Maryland Department of Planning, U.S. Geological Survey, U.S. Fish and Wildlife Service, Natural Resources Conservation Service, and Montgomery County.




Legend

- Watersheds in Montgomery County
- Potential wetland restoration sites
 - Higher ranking
 - Lower ranking
- Roads
- Water
- Protected land (State, Federal, County, METs, Private Conservation, Rural Legacy Easements)
- Montgomery County



Note: Additional wetland prioritization sites were identified in the accompanying text document.

- GIS layers used in ranking sites for potential wetland restoration:
- Green Infrastructure
 - Land use
 - Streams and 100m buffer
 - Scenic Rivers
 - Nontidal Wetlands of Special State Concern (NTWSSC) and potential NTWSSC
 - Soils w/ drainage of SPD, PD, VPD
 - Prime farmland
 - Priority Funding Areas
 - Existing wetlands (DNR, NWI)


 Robert L. Ehrlich, Jr., Governor
 Michael S. Steele, Lt. Governor
 Kendi P. Philbrick, Secretary
 Jonas A. Jacobson, Deputy Secretary

