





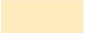
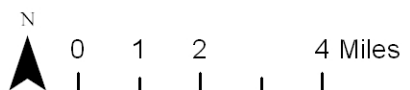
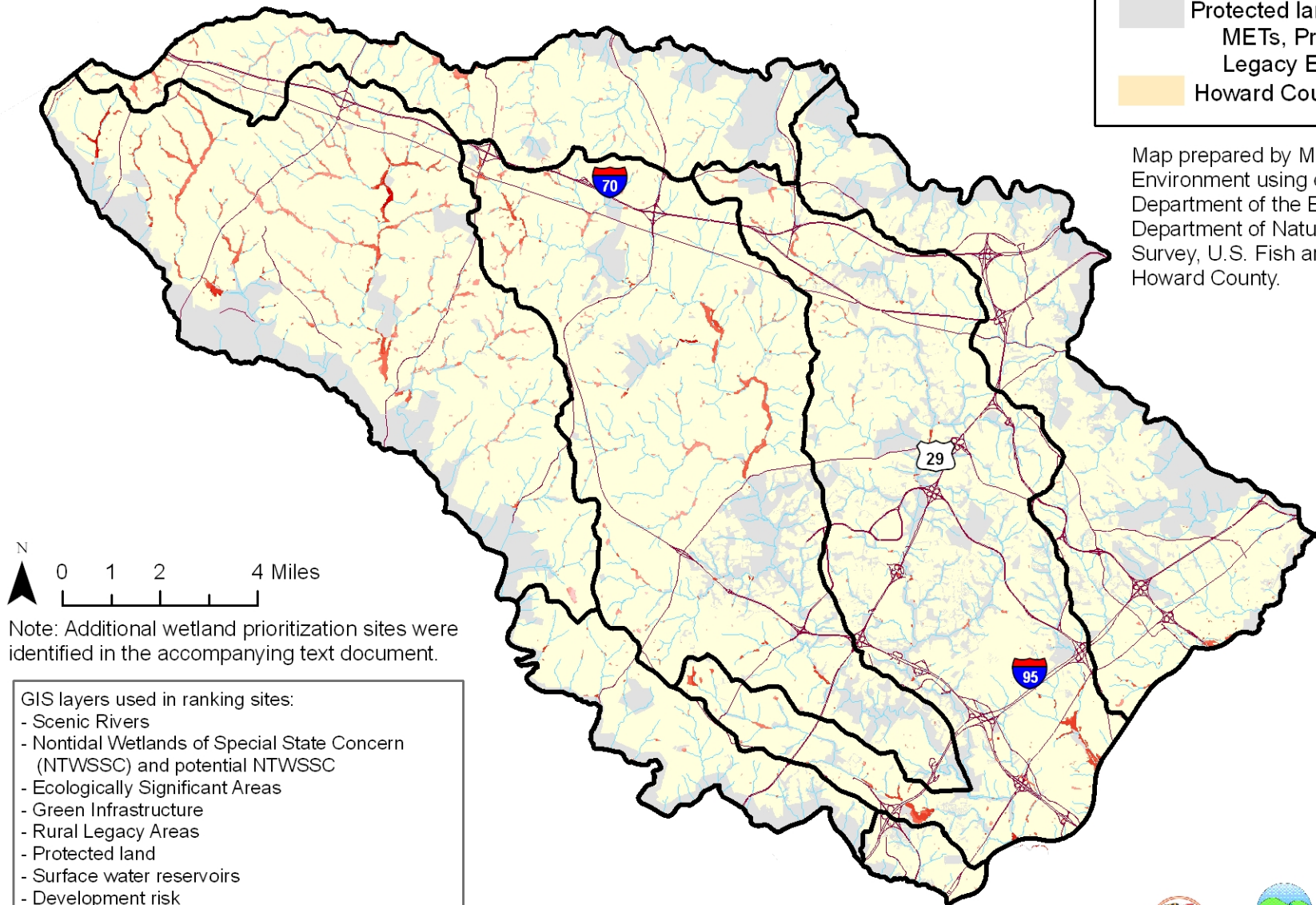


# Priority Sites for Wetland Preservation on Private Land in Howard County

## Legend

-  Watersheds in Howard County
- Potential wetland preservation sites:
  -  High ranking
  -  Low ranking
-  Roads
-  Water
-  Protected land (State, Federal, County, METs, Private Conservation, Rural Legacy Easements)
-  Howard County

Map prepared by Maryland Department of the Environment using data supplied by Maryland Department of the Environment, Maryland Department of Natural Resources, U.S. Geological Survey, U.S. Fish and Wildlife Service, and Howard County.



Note: Additional wetland prioritization sites were identified in the accompanying text document.

- GIS layers used in ranking sites:
- Scenic Rivers
  - Nontidal Wetlands of Special State Concern (NTWSSC) and potential NTWSSC
  - Ecologically Significant Areas
  - Green Infrastructure
  - Rural Legacy Areas
  - Protected land
  - Surface water reservoirs
  - Development risk
  - Existing wetlands (DNR, NWI)