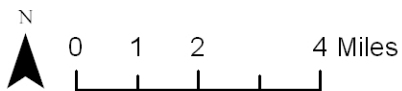


Priority Sites for Biodiversity Based Wetland Restoration in Howard County

Legend

- Watersheds in Howard County
- Stream problems (erosion, poor buffer, fish barrier, channalization)
- Potential wetland restoration sites:
 - High ranking
 - Low ranking
- Roads
- Water
- Protected land (State, Federal, County, METs, Private Conservation, Rural Legacy Easements)
- Howard County

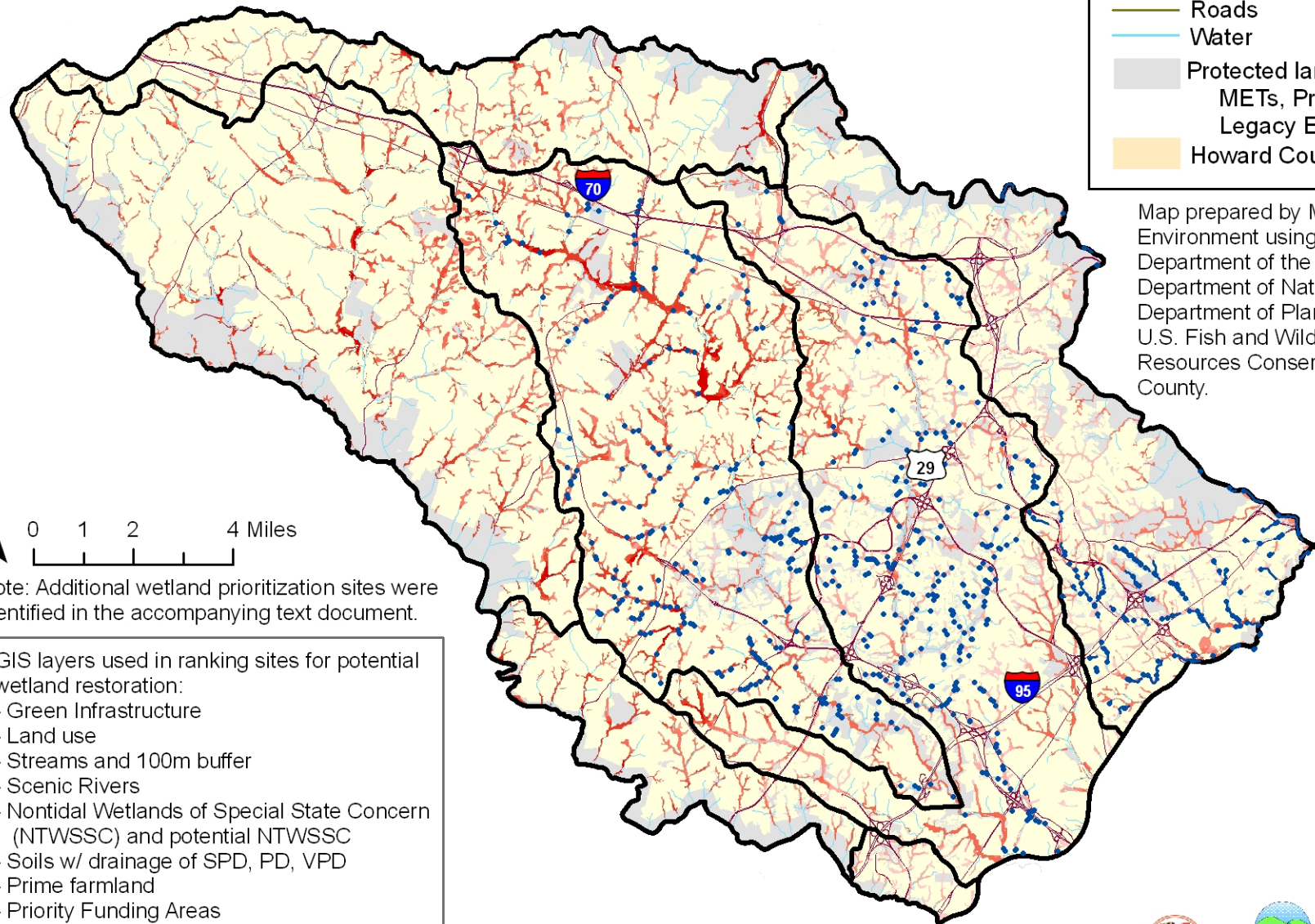
Map prepared by Maryland Department of the Environment using data supplied by Maryland Department of the Environment, Maryland Department of Natural Resources, Maryland Department of Planning, U.S. Geological Survey, U.S. Fish and Wildlife Service, Natural Resources Conservation Service, and Howard County.



Note: Additional wetland prioritization sites were identified in the accompanying text document.

GIS layers used in ranking sites for potential wetland restoration:

- Green Infrastructure
- Land use
- Streams and 100m buffer
- Scenic Rivers
- Nontidal Wetlands of Special State Concern (NTWSSC) and potential NTWSSC
- Soils w/ drainage of SPD, PD, VPD
- Prime farmland
- Priority Funding Areas
- Existing wetlands (DNR, NWI)



Robert L. Ehrlich, Jr., *Governor*
 Michael S. Steele, *Lt. Governor*
 Kendl P. Philbrick, *Secretary*
 Jonas A. Jacobson, *Deputy Secretary*