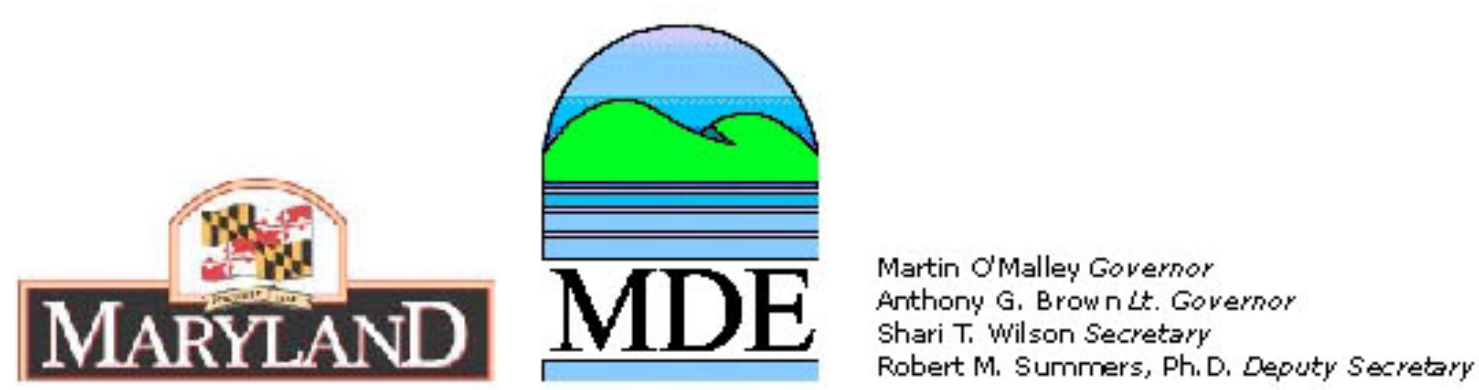
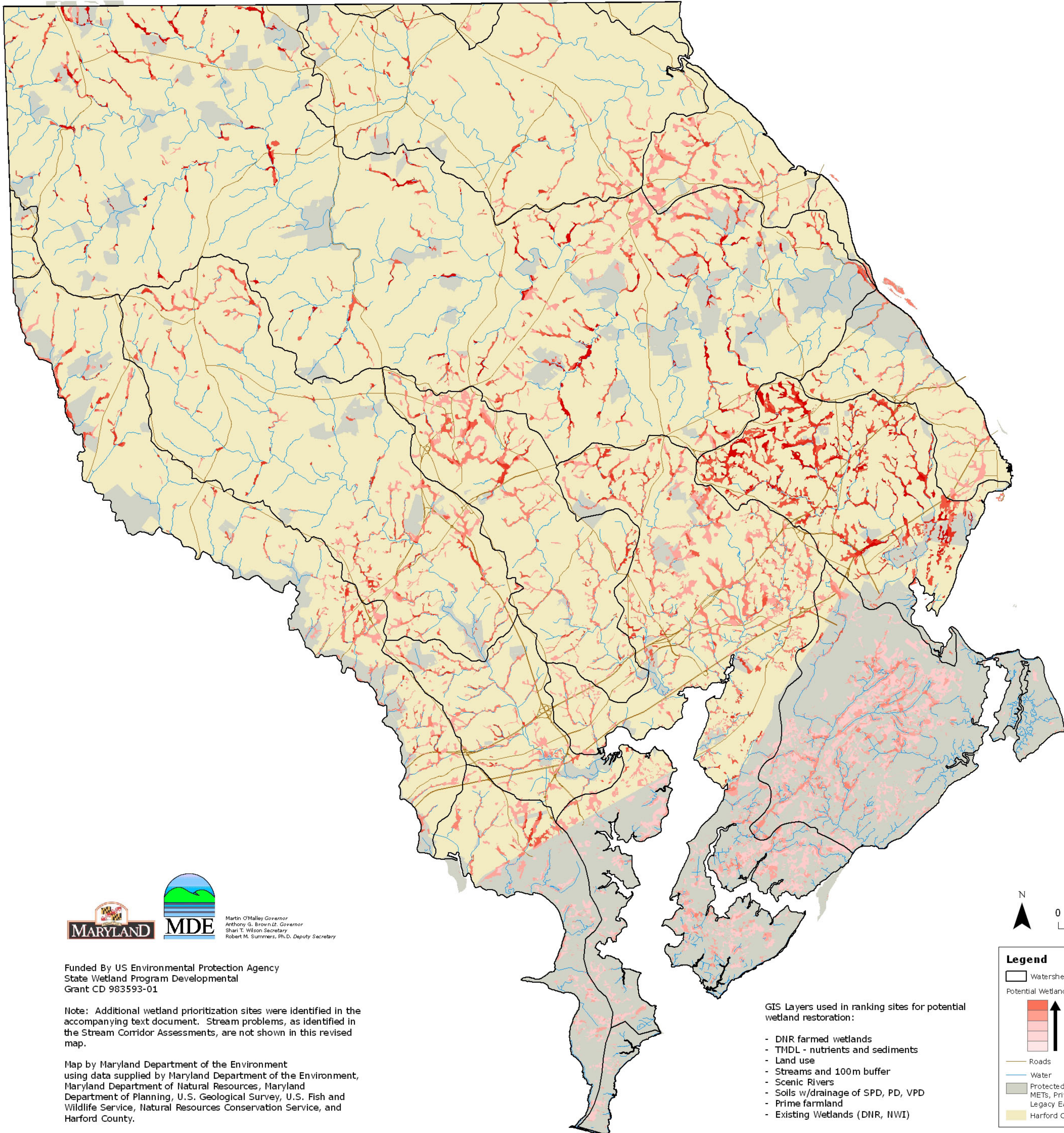


Priority Sites for Wetland Restoration for Water Quality in Harford County



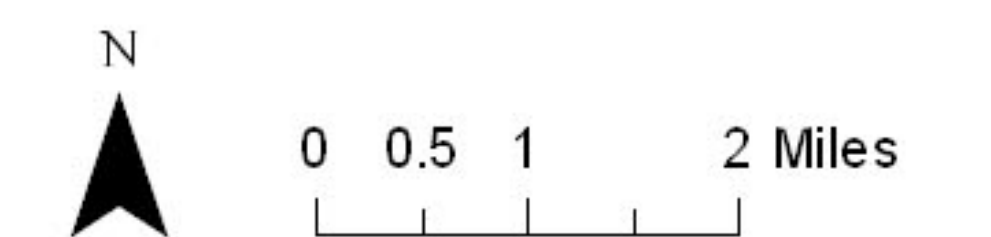
Funded By US Environmental Protection Agency
State Wetland Program Developmental
Grant CD 983593-01

Note: Additional wetland prioritization sites were identified in the accompanying text document. Stream problems, as identified in the Stream Corridor Assessments, are not shown in this revised map.

Map by Maryland Department of the Environment
using data supplied by Maryland Department of the Environment,
Maryland Department of Natural Resources, Maryland
Department of Planning, U.S. Geological Survey, U.S. Fish and
Wildlife Service, Natural Resources Conservation Service, and
Harford County.

GIS Layers used in ranking sites for potential
wetland restoration:

- DNR farmed wetlands
- TMDL - nutrients and sediments
- Land use
- Streams and 100m buffer
- Scenic Rivers
- Soils w/drainage of SPD, PD, VPD
- Prime farmland
- Existing Wetlands (DNR, NWI)



Legend

- Watersheds
- Potential Wetland Restoration Sites:
 - Higher Ranking
 - Lower Ranking
- Roads
- Water
- Protected land (State, Federal, County, METS, Private Conservation, Rural Legacy Easements)
- Harford County