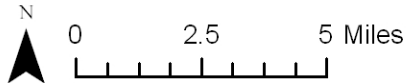
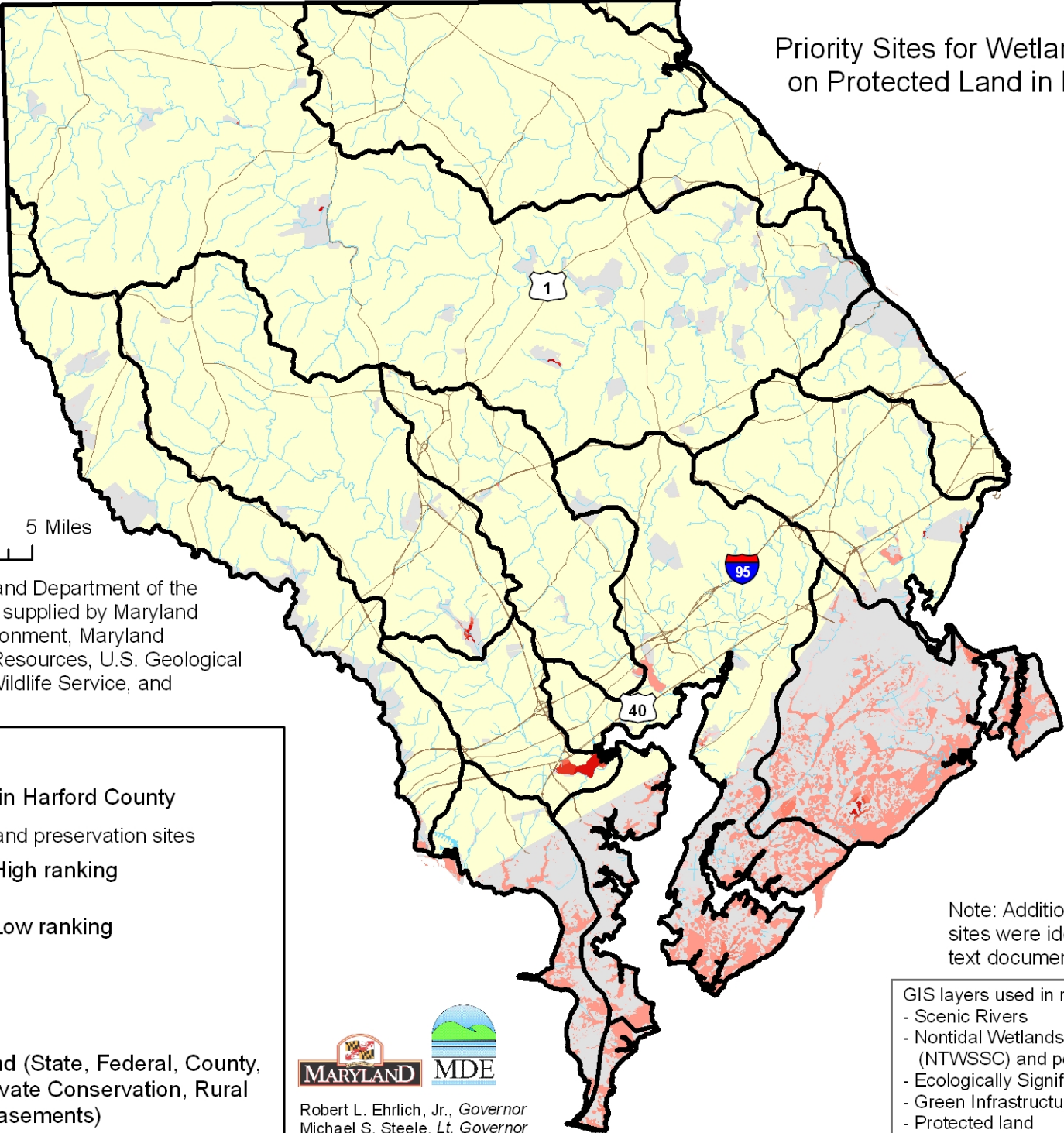


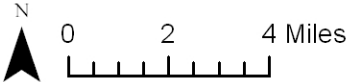
# Priority Sites for Wetland Preservation on Protected Land in Harford County



Map prepared by Maryland Department of the Environment using data supplied by Maryland Department of the Environment, Maryland Department of Natural Resources, U.S. Geological Survey, U.S. Fish and Wildlife Service, and Harford County.

**Legend**

- Watersheds in Harford County
- Potential wetland preservation sites
  - High ranking
  - Low ranking
- Roads
- Water
- Protected land (State, Federal, County, METs, Private Conservation, Rural Legacy Easements)
- Harford County



Note: Additional wetland prioritization sites were identified in the accompanying text document.

GIS layers used in ranking sites:

- Scenic Rivers
- Nontidal Wetlands of Special State Concern (NTWSSC) and potential NTWSSC
- Ecologically Significant Areas
- Green Infrastructure
- Protected land
- Surface water reservoirs
- Existing wetlands (DNR, NWI)

Robert L. Ehrlich, Jr., Governor  
 Michael S. Steele, Lt. Governor  
 Kendl P. Philbrick, Secretary  
 Jonas A. Jacobson, Deputy Secretary