

# Priority Sites for Wetland Preservation on Private Land in Frederick County







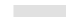

Map prepared by Maryland Department of the Environment using data supplied by Maryland Department of the Environment, Maryland Department of Natural Resources, U.S. Geological Survey, and U.S. Fish and Wildlife Service.

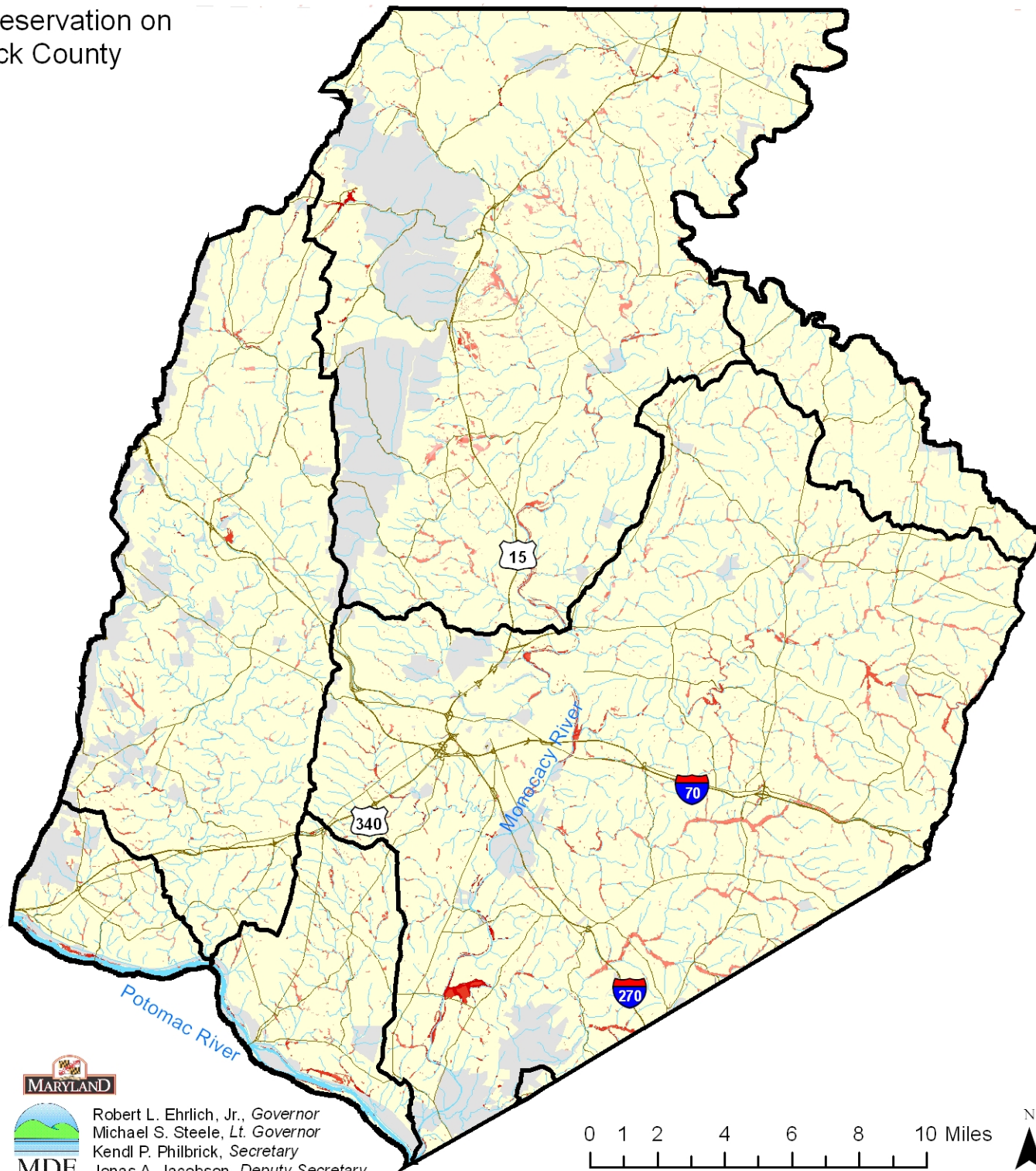
Note: Additional wetland prioritization sites were identified in the accompanying text document.

### GIS layers used in ranking sites:

- Scenic Rivers
- Nontidal Wetlands of Special State Concern (NTWSSC) and potential NTWSSC
- Ecologically Significant Areas
- Green Infrastructure
- Rural Legacy Areas
- Protected land
- Surface water reservoirs
- Development risk
- Existing wetlands (DNR, NWI)

### Legend

-  Watersheds in Frederick County
-  Potential wetland preservation sites
-  High ranking
-  Low ranking
-  Roads
-  Water
-  Protected land (State, Federal, County, METs, Private Conservation, Rural Legacy Easements)
-  Frederick County



Robert L. Ehrlich, Jr., Governor  
 Michael S. Steele, Lt. Governor  
 Kendi P. Philbrick, Secretary  
 Jonas A. Jacobson, Deputy Secretary

