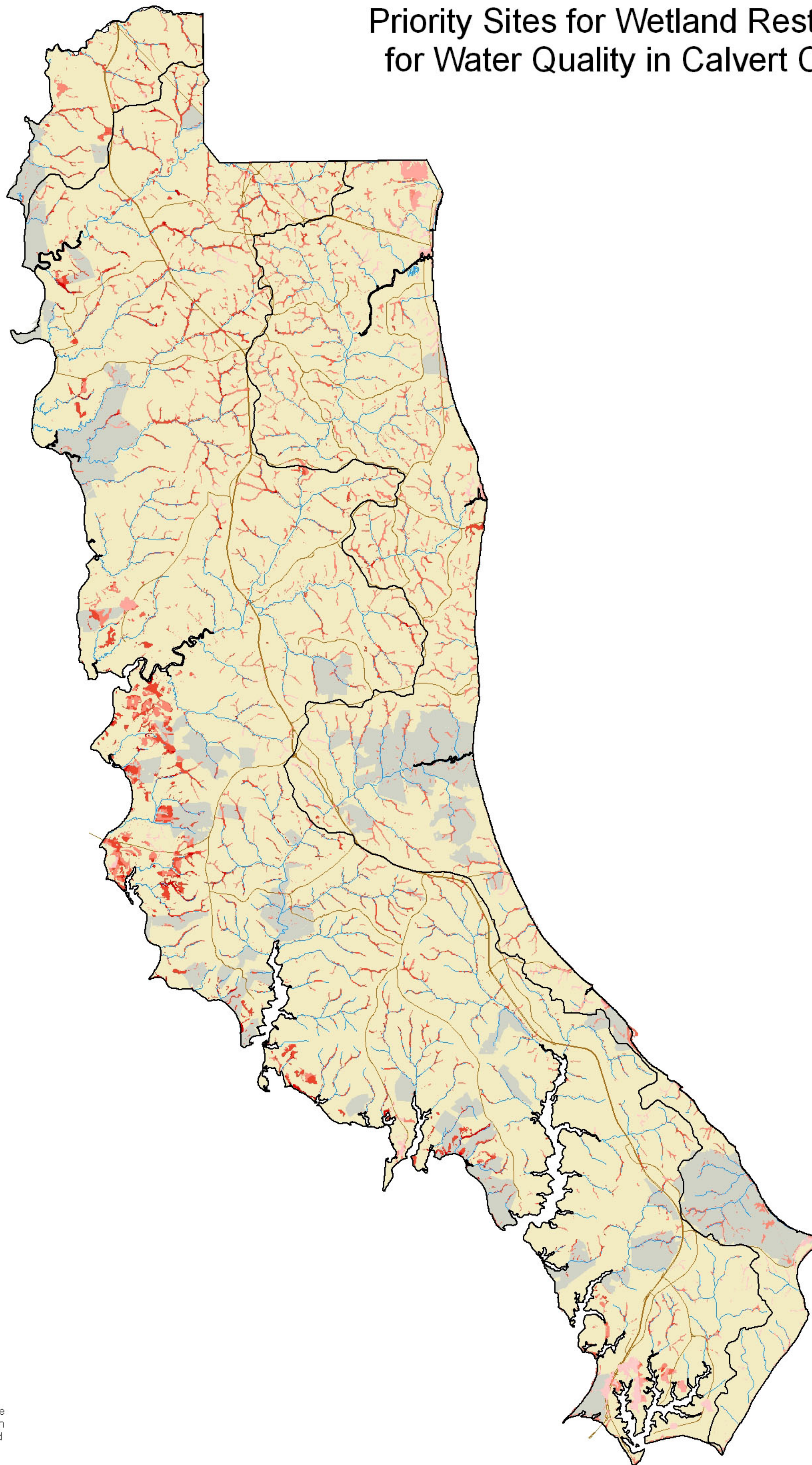
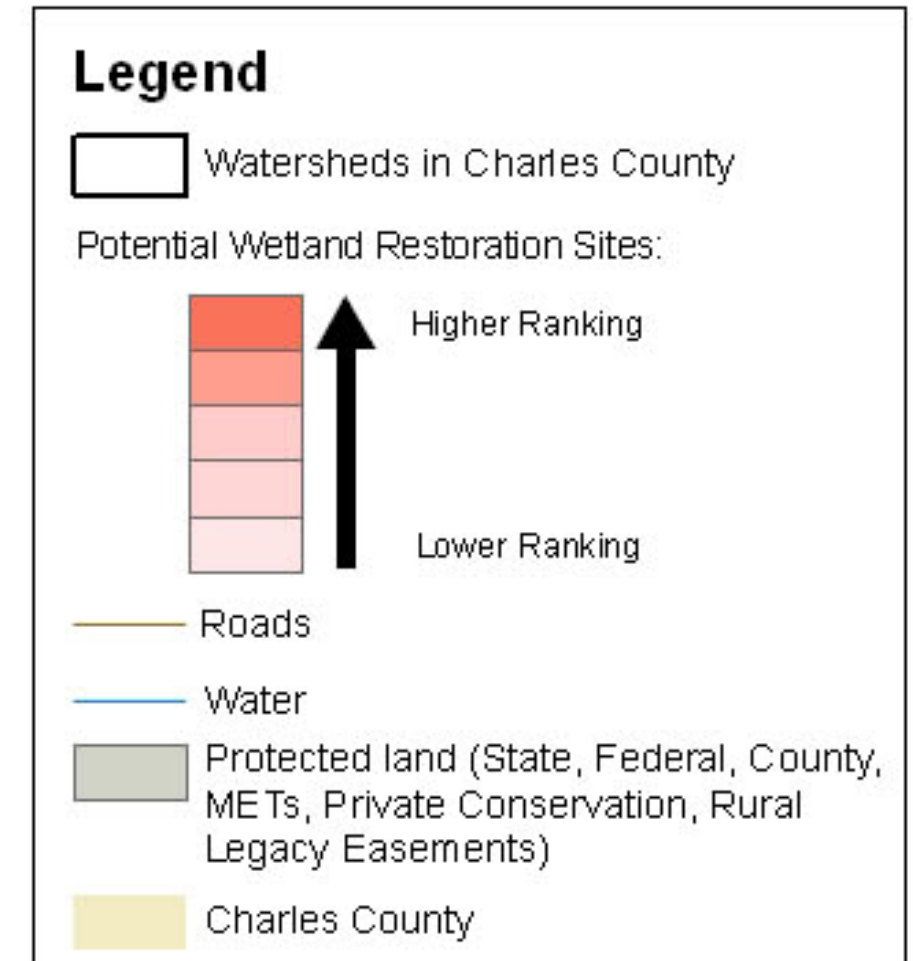
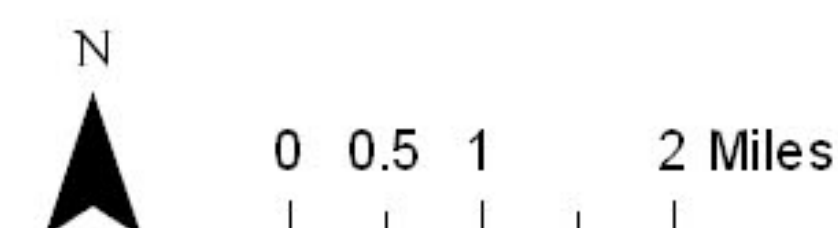


# Priority Sites for Wetland Restoration for Water Quality in Calvert County



GIS Layers used in ranking sites for potential wetland restoration:

- DNR farmed wetlands
- TMDL - nutrients and sediments
- Land use
- Streams and 100m buffer
- Scenic Rivers
- Soils w/drainage of SPD, PD, VPD
- Prime farmland
- Priority Funding Areas
- Existing Wetlands (DNR, NWI)



Martin O'Malley Governor  
Anthony G. Brown Lt. Governor  
Shari T. Wilson Secretary  
Robert M. Summes, Ph.D. Deputy Secretary

Funded By US Environmental Protection Agency  
State Wetland Program Developmental  
Grant CD 983593-01

Note: Additional wetland prioritization sites were identified in the accompanying text document. Stream problems, as identified in the Stream Corridor Assessments, are not shown in this revised map.

Map by Maryland Department of the Environment  
using data supplied by Maryland Department of the Environment,  
Maryland Department of Natural Resources, Maryland  
Department of Planning, U.S. Geological Survey, U.S. Fish and  
Wildlife Service, and Natural Resources Conservation Service.