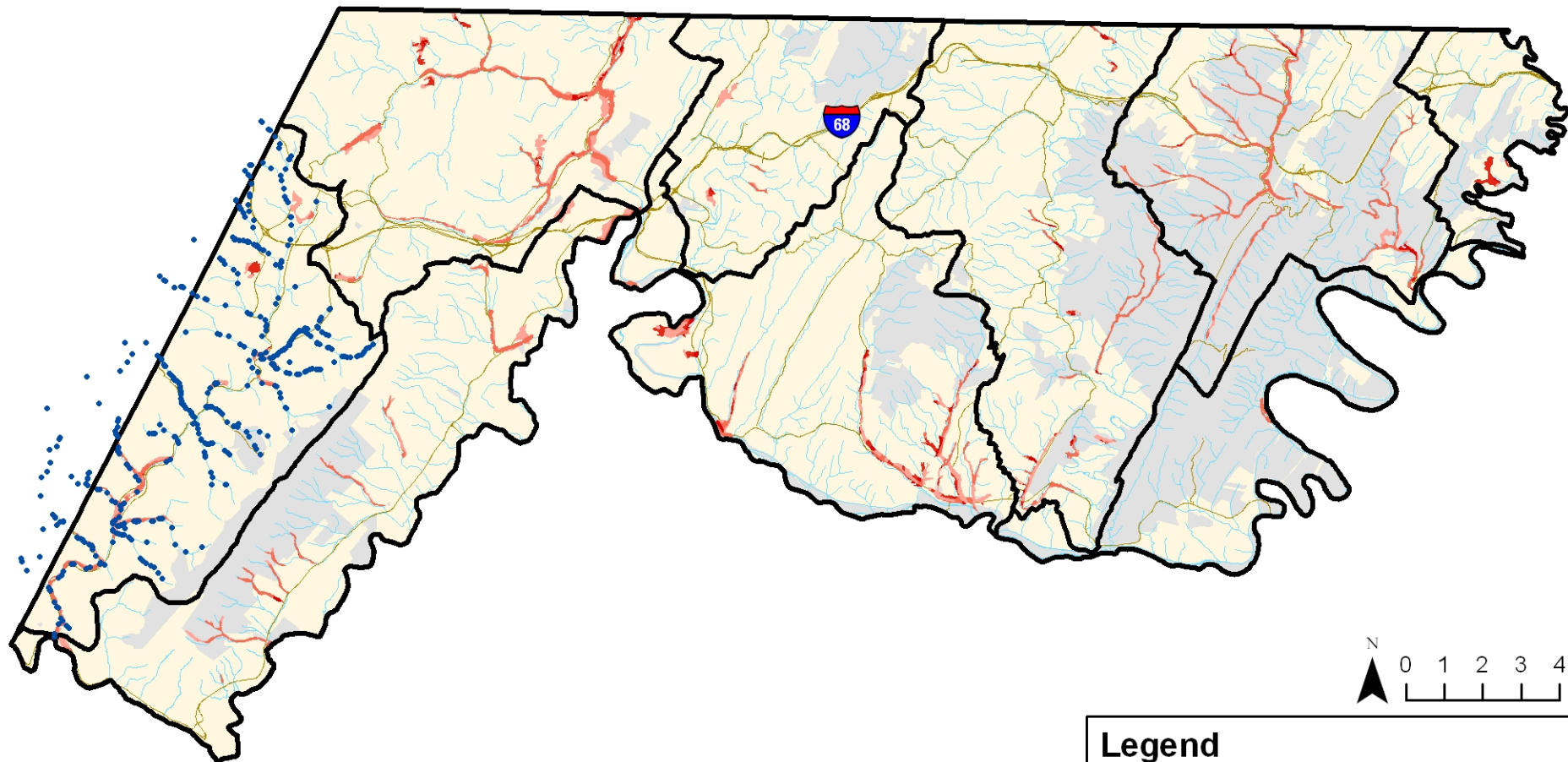


# Priority Sites for Water Quality Based Wetland Restoration in Allegany County



Note: Additional wetland prioritization sites were identified in the accompanying text document.

GIS layers used in ranking sites for potential wetland restoration:

- DNR farmed wetlands
- TMDL - nutrients and sediments
- Land use
- Streams and 100m buffer
- Soils w/ drainage of SPD, PD, VPD
- Prime farmland
- Existing wetlands (DNR, NWI)



Robert L. Ehrlich, Jr., *Governor*  
 Michael S. Steele, *Lt. Governor*  
 Kendi P. Philbrick, *Secretary*  
 Jonas A. Jacobson, *Deputy Secretary*

Map prepared by Maryland Department of the Environment using data supplied by Maryland Department of the Environment, Maryland Department of Natural Resources, Maryland Department of Planning, U.S. Geological Survey, and U.S. Fish and Wildlife Service.

## Legend

- Watersheds in Allegany County
- Stream problems (erosion, poor buffer, fish barrier, channalization, acid mine drainage)
- Potential wetland restoration sites
  - Higher ranking
  - Lower ranking
- Roads
- Water
- Protected land (State, Federal, County, METs, Private Conservation, Rural Legacy Easements)
- Allegany County