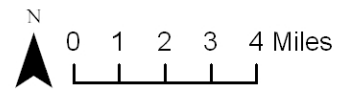
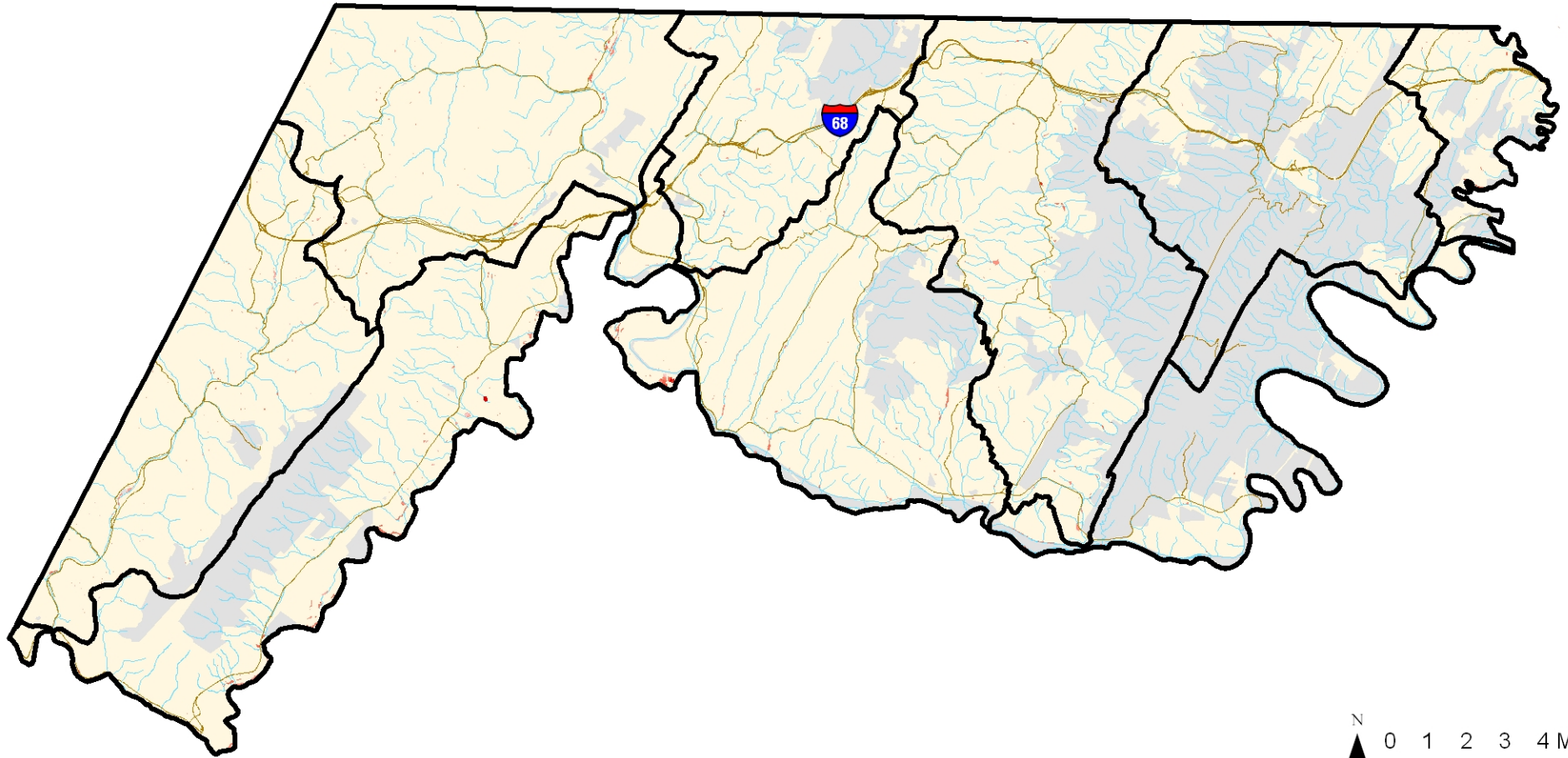


# Priority Sites for Wetland Preservation on Private Land in Allegany County



Note: Additional wetland prioritization sites were identified in the accompanying text document.

- GIS layers used in ranking sites:
- Nontidal Wetlands of Special State Concern (NTWSSC) and potential NTWSSC
  - Ecologically Significant Areas
  - Green Infrastructure
  - Rural Legacy Areas
  - Surface water reservoirs
  - Development risk
  - Existing wetlands (DNR, NWI)
  - Protected land



Robert L. Ehrlich, Jr., *Governor*  
 Michael S. Steele, *Lt. Governor*  
 Kendi P. Philbrick, *Secretary*  
 Jonas A. Jacobson, *Deputy Secretary*

Map prepared by Maryland Department of the Environment using data supplied by Maryland Department of the Environment, Maryland Department of Natural Resources, U.S. Geological Survey, and U.S. Fish and Wildlife Service.

### Legend

- Watersheds in Allegany County
- Potential wetland preservation sites
  - Higher ranking (dark red)
  - Lower ranking (light pink)
- Roads
- Water
- Protected land (State, Federal, County, METs, Private Conservation, Rural Legacy Easements)
- Allegany County