

MDE's intent to seek a Priority Funding Area (PFA) funding exception for 13320 Foxden Drive, Rockville, MD 20850 in Montgomery County.

Background: The Bay Restoration (Septic) Fund (BRF) requires MDE to provide an opportunity for Public Comment and/or Public Hearing in cases where an Onsite Sewage Disposal System (OSDS)/septic system is located outside the County Priority Funding Area (PFA) and where BRF grant funding is being proposed for the public sewer connection. After addressing the public comments, if any, the MDE intends to seek a PFA funding exception from the Smart Growth Coordinating Committee under the Maryland Department of Planning.

Public Comment Period: Through January 29, 2016. Comments should be sent by email to: jag.khuman@maryland.gov

Project: Sewer connection for a single house located at 13320 Foxden Drive, Rockville, to the existing WSSC sewer system with final treatment at the Seneca Creek Wastewater Treatment Plant (WWTP).

BRF Funding Eligibility: Up to \$20,000 or actual sewer connection project cost, whichever is lower.

Public health issues:

- Initial OSDS seepage pit was installed in 1957 (system is ~58 years old).
- High water table, unsuitable topography limit options for repair/replacement of septic system.

Public health mitigation from proposed project: A sewer connection for treatment at the WSSC Seneca Creek ENR WWTP will mitigate the risks associated with contamination of ground water from the aging septic system. In addition, a much higher level of nitrogen reduction will be achieved (see below).

Potential new growth: None. This is a single property sewer connection to an existing public sewer line.

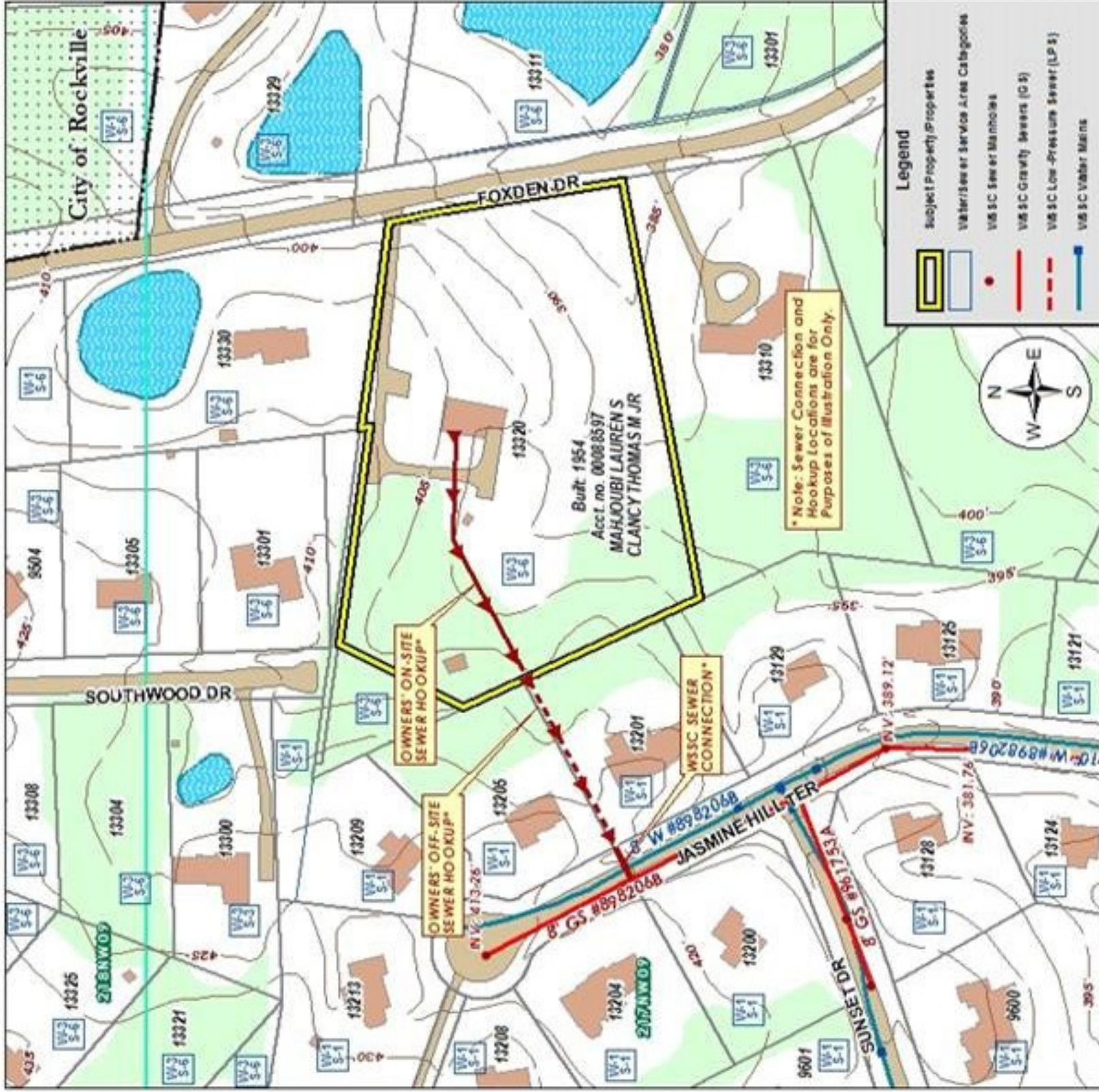
Measures being taken to mitigate new growth: N/A – Single property sewer connection

Potential nitrogen reduction:

	<u>Approx. Total Nitrogen (TN) discharged</u>	<u>Total TN reduced</u>
A. No action	20 lbs/yr	0 lbs/yr - Baseline
B. BAT upgrade	10 lbs/yr	10 lbs/yr or 50% reduction over A
C. ENR connect	2.3 lbs/yr	17.7 lbs/yr or 88% reduction over A

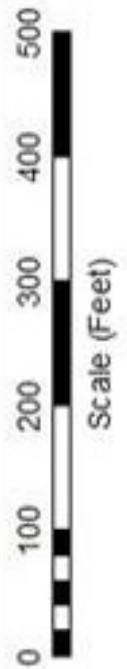
Attachment: Location Map

13320 Foxden Drive (Potomac Highlands) - Rockville General Research & Information: Water/Sewer Service Area Categories Map



Legend

	Subject Property Properties
	Water/Sewer Service Area Categories
	VS SC Sewer Manholes
	VS SC Gravity Sewers (G/S)
	VS SC Low-Pressure Sewer (LP S)
	VS SC Water Mains
	Rockville Water Mains
	Rockville Gravity Sewer Mains
	VS SC Tree Grid
	Topography (5 ft. c.t.)
	Existing Parkland
	Woodlands
	Municipalities



MONTGOMERY COUNTY
 DEPARTMENT OF ENVIRONMENTAL PROTECTION
 WATER & WASTEWATER POLICY GROUP
 ©11/15

Montgomery County, Maryland Draft 2015 Comprehensive Water Supply and Sewerage Systems Plan