

**Total Maximum Daily Loads of Polychlorinated Biphenyls in Corsica
River of the Lower Chester River, Mesohaline Segment, Queen
Anne's County, Maryland**

FINAL



DEPARTMENT OF THE ENVIRONMENT
1800 Washington Boulevard, Suite 540
Baltimore MD 21230-1718

Submitted to:

Watershed Protection Division
U.S. Environmental Protection Agency, Region III
1650 Arch Street
Philadelphia, PA 19103-2029

September 2009

EPA Submittal Date: September 28, 2009
EPA Approval Date: March 22, 2011

Table of Contents

List of Figures..... i

List of Tables..... i

List of Abbreviations..... ii

EXECUTIVE SUMMARY iv

1. INTRODUCTION 1

2. SETTING AND WATER QUALITY DESCRIPTION 3

 2.1. General Setting..... 3

 2.2. Water Quality Characterization and Impairment 5

 2.3. Source Assessment..... 8

3. WATER COLUMN AND SEDIMENT TMDL ENDPOINTS 17

4. TOTAL MAXIMUM DAILY LOADS AND LOAD ALLOCATIONS 18

 4.1. Overview 18

 4.2. Analysis Framework 18

 4.3. Critical Conditions and Seasonality 19

 4.4. TMDL Allocations..... 20

 4.5. Margin of Safety 21

 4.6. Summary of Total Maximum Daily Load Allocations 21

5. ASSURANCE OF IMPLEMENTATION 23

REFERENCES 24

Appendix A. List of Individual tPCB Measurements A1

Appendix B. Derivation of Adj-tBAFs and Adj-SediBAFs B1

Appendix C. Tidal Prism Model..... C1

Appendix D. Tidal Prism Model Calculation for Corsica River..... D1

Appendix E. Calculation of 95% CIs E1

Appendix F. Calculation of Fraction of Different PCB Forms F1

Appendix G. Technical Approach Used to Generate Maximum Daily Load G1

Appendix H. Derivation of the Boundary tPCB Concentration..... H1

Appendix I. List of Analyzed PCB Congeners..... I1

Appendix J. WWTP Load Evaluation J1

List of Figures

Figure 1: Land Use Distribution in the Corsica River Watershed 3
Figure 2: Location Map of the Corsica River Watershed and Embayment 4
Figure 3: Land Use in the Corsica River Watershed..... 5
Figure 4: Water Quality Monitoring Stations in the Corsica River Watershed 8
Figure 5: Location of the Contaminated Site in the Corsica River Watershed 12
Figure 6: Location of the WWTP in the Corsica River Watershed and the USGS Stations Used for Flow Estimation 14
Figure 7: Changes in Water Column tPCB Concentration with Time..... 19
Figure 8: Changes in Sediment tPCB Concentration with Time 19

List of Tables

Table 1: Land Use Distribution in the Corsica River Watershed..... 3
Table 2: Fish Tissue tPCB Concentrations in the Corsica River Embayment (2001, 2003) 6
Table 3: Water Quality Monitoring Stations and Average tPCB Concentrations in the Corsica River Embayment, Watershed, and River Boundary (2006, 2008, 2009) 7
Table 4: Contaminated Site tPCB Baseline Load 11
Table 5: WWTP tPCB Baseline Load..... 14
Table 6: Summary of the Total tPCB Baseline Load..... 16
Table 7: Summary of tPCB Baseline Loads, TMDL Allocations, MDL, and Associated Percent Reductions 22

List of Abbreviations

Adj-SediBAF	Adjusted Sediment Bioaccumulation Factor
Adj-tBAF	Adjusted Total Bioaccumulation Factor
BAF	Bioaccumulation Factor
BSAF	Biota-sediment accumulation factor
CBP P5	Chesapeake Bay Program Phase 5
CFR	Code of Federal Regulations
CI	Confidence Interval
COMAR	Code of Maryland Regulations
CV	Coefficient of Variation
DOC	Dissolved Organic Carbon
DRBC	Delaware River Basin Commission
g	Gram
kg	Kilogram
km	Kilometer
Kow	PCB Octanol-Water Partition Coefficient
L	Liter
LA	Load Allocation
m	Meter
MDE	Maryland Department of the Environment
MDL	Maximum Daily Load
MDP	Maryland Department of Planning
mg/kg	Milligrams/kilogram, ppm
MGD	Million gallons per day
MOS	Margin of Safety
MS4	Municipal Separate Storm Sewer Systems
ng/g	Nanograms per gram, ppb
ng/kg	Nanograms per kilogram, ppt
ng/L	Nanograms per liter, ppt

FINAL

NPDES	National Pollutant Discharge Elimination System
PCB	Polychlorinated Biphenyl
POC	Particulate Organic Carbon
ppb	Parts per billion
ppm	Parts per million
ppt	Parts per trillion
QEA	Quantitative Environmental Analysis
TMDL	Total Maximum Daily Load
tPCB	Total PCB
TSD	Technical Support Document
TSS	Total Suspended Solid
UMCES	University of Maryland Center for Environmental Science
US EPA	U. S. Environmental Protection Agency
USGS	U. S. Geological Survey
WLA	Waste Load Allocation
WQA	Water Quality Analysis
WQLS	Water Quality Limited Segment
WQS	Water Quality Standard
WWTP	Waste Water Treatment Plant
yr	Year

EXECUTIVE SUMMARY

Section 303(d) of the federal Clean Water Act and the U.S. Environmental Protection Agency's (US EPA) implementing regulations direct each State to identify and list waters, known as water quality limited segments (WQLSs), in which current required controls of a specified substance are inadequate to achieve water quality standards (WQSs). For each WQLS, the State is to either establish a Total Maximum Daily Load (TMDL) of the specified substance that the waterbody can receive without violating WQSs, or demonstrate that WQSs are being met (CFR 2007).

The Maryland water quality regulations state that all surface waters of Maryland shall be protected for water contact recreation, fishing, and protection of aquatic life and wildlife (COMAR 2007a). The specific designated use of Corsica River of the Lower Chester River Mesohaline segment (also referred to as the Corsica River embayment) is Use II – Support of Estuarine and Marine Aquatic Life and Shellfish Harvesting (COMAR 2007b). The Maryland Department of the Environment (MDE) has identified the waters of the Corsica River of the Lower Chester River Mesohaline segment on the State's Integrated Report as impaired by the following pollutants (listing year and Integrated Report Assessment Unit Identification in parentheses): sediments – later changed to a total suspended solids (TSS) listing (1996; MD-CHSMH), nutrients (1996; MD-CHSMH), fecal coliform (1996; MD-CHSMH-Corsica_River), polychlorinated biphenyls (PCBs) in fish tissue (2002; MD-CHSMH-02130507), and impacts to biological communities (2004; MD-CHSMH) (MDE 2008).

Nitrogen and phosphorus TMDLs and a fecal coliform TMDL for the restricted shellfish harvesting portion of the Corsica River were approved by the US EPA in 2000 and 2005, respectively. The sediments listing will be addressed via the Chesapeake Bay TMDL scheduled to be established by the end of 2010. This document, upon US EPA approval, establishes a total PCB (tPCB) TMDL for the Corsica River of the Lower Chester River Mesohaline segment (MD-CHSMH-02130507). Data solicitation for PCB related information was conducted by MDE, and all readily available data have been considered.

The objective of the tPCB TMDL established in this document is to ensure that the “fishing” designated use in the Corsica River embayment is supported to allow consumption of fish protective of human health. This objective was achieved with the use of a tidal prism model and the tPCB fish tissue listing threshold of 39 nanogram/gram (ng/g, ppb) – wet weight (MDE 2008, 72-74). The tidal prism model incorporates the influences of fresh water discharge, tidal flushing, and exchanges between the water column and bottom sediments, thereby representing the dynamic transport within the Corsica River embayment. The tidal prism model was used to:

1. Estimate and predict tPCB transport and fate based on the measured tPCB concentrations in the water column and sediment of the Corsica River embayment.
2. Simulate the long-term tPCB concentrations in the water column and bottom sediments of the Corsica River embayment.
3. Based on the available literature, the TMDL methodology assumes that the average tPCB concentration at the Corsica River open boundary with the Lower Chester River is decreasing at a rate of 6.5% per year (Appendix H). Given this rate of decline, the model estimates that the time needed for the tPCB concentrations to meet the site-specific tPCB

water column and sediment TMDL endpoints of 0.35 nanograms/liter (ng/L) and 8.7 ng/g, respectively is approximately 9 years.

As part of this analysis, point and nonpoint PCB sources have been identified throughout the Corsica River watershed. Two nonpoint sources (i.e., resuspension and diffusion from the bottom sediments and Lower Chester River influence) were determined to be the major sources of tPCBs to the Corsica River embayment. The Lower Chester River tPCB loads (conveying tPCB loads from the Chesapeake Bay) are transported via flood tides into the Corsica River embayment and tend to accumulate in the bottom sediments. Other nonpoint sources include atmospheric deposition to the embayment and runoff from watershed sources. The characterized point sources include one wastewater treatment plant (WWTP).

The Total Baseline (i.e., 2006) Load of tPCBs to the Corsica River embayment is 1,481 g/year. It can be further subdivided into a Nonpoint Source Baseline Load and Point Source Baseline Load. The tPCB TMDL for the Corsica River embayment is 756 g/year with a reduction of 49.0% from the Total Baseline Load (see Table ES-1). This TMDL when implemented will ensure that the tPCB loads are at a level expected to support the “fishing” designated use in the Corsica River embayment that is protective of human health.

Table ES-1: Summary of tPCB Baseline Loads, TMDL Allocations, and Associated Percent Reductions

Source	Baseline (g/year)	Baseline (%)	TMDL (g/year)	Load Reduction (%)
Lower Chester River Influence	936.5	63.2	518.9	44.6
Bottom Sediment (Resuspension and Diffusion)	510.8	34.5	127.6	75.0
Direct Atmospheric Deposition (to the Surface of the Embayment)	17.8	1.2	17.8	0.0
Watershed Nonpoint Sources	14.9	1.0	14.9	0.0
<i>Nonpoint Sources/Load Allocations</i>	<i>1,480.0</i>	<i>99.9</i>	<i>679.2</i>	<i>54.1</i>
WWTP [△]	1.28	0.1	1.28	0.0
<i>Point Sources/Waste Load Allocations</i>	<i>1.3</i>	<i>0.1</i>	<i>1.3</i>	<i>0.0</i>
<i>Margin of Safety</i>	<i>-</i>	<i>-</i>	<i>75.6</i>	<i>-</i>
Total	1,481	100	756	49.0

Note: [△] WWTP Baseline Load was considered to be *de minimis*.

All TMDLs need to be presented as a sum of waste load allocations (WLAs) for the identified point sources and load allocations (LAs) for nonpoint source loads generated within the assessment unit, and where applicable LAs for natural background, tributary, and adjacent segment loads. The WWTP Baseline Load was considered to be *de minimis*, therefore no appreciable environmental benefit would be gained by reducing this load (see Appendix J for details). There are currently no effluent PCB limits established in the discharge permits for WWTPs. The

sensitivity analysis provided in this document (Appendix J) suggests that there is no "reasonable potential" for PCBs to exceed water quality even at 100 times the current WWTP loadings. Inclusion of a WLA in this document does not reflect any determination to impose an effluent limit.

Furthermore, all TMDLs must include a margin of safety (MOS) to account for uncertainty in the relationship between pollutant loads and water quality as well as the scientific and technical understanding and simulation of water quality parameters in natural systems (CFR 2007). An explicit MOS of 10% or 75.6 grams/year (g/year) was incorporated into the analysis to account for such uncertainty. The State reserves the right to revise these allocations provided the revisions are consistent with achieving WQSSs.

The TMDL presented in this document is protective of human health at all times and in this way implicitly accounts for seasonal variations as well as critical conditions. Since tPCB levels in fish become elevated due to long-term exposure, rather than temporary spikes in water column tPCB concentration, it has been determined that the selection of the average tPCB concentrations as representing the baseline conditions adequately considers the impact of seasonal variations and critical conditions on the "fishing" designated use in the Corsica River embayment. Furthermore, the site-specific tPCB water column TMDL endpoint used to develop this TMDL is lower than the Maryland fresh and salt water chronic aquatic life tPCB criteria protective of fish and wildlife as well as the Maryland water column human health tPCB criterion protective of human health associated with consumption of PCB contaminated fish.

Lower Chester River influence (conveying tPCB loads from the Chesapeake Bay) and resuspension and diffusion from the bottom sediments have been identified as the two major sources of tPCBs to the Corsica River embayment. Given that on average the tPCB concentrations in the Upper Chesapeake Bay are decreasing at a rate of 6.5% per year (Appendix H), the tPCB levels in the Corsica River embayment are expected to decline over time. Discovering and remediating any existing PCB land sources throughout the Chesapeake Bay watershed via future TMDL development and implementation efforts will further help to meet water quality goals in the Corsica River embayment.

Once US EPA has approved this TMDL, MDE will begin an iterative process of implementation, focusing first on those sources with the largest impact on water quality and giving consideration to the relative cost and ease of implementation. MDE's Water Quality Standards Section will continue to monitor PCB levels in Maryland fish. This information will be used to evaluate the PCB impairment in the Corsica River embayment on an ongoing basis.

1. INTRODUCTION

Section 303(d) of the federal Clean Water Act (CWA) and the U.S. Environmental Protection Agency's (US EPA) implementing regulations direct each State to identify and list waters, known as water quality limited segments (WQLSs), in which current required controls of a specified substance are inadequate to achieve water quality standards (WQSs). For each WQLS, the State is to either establish a Total Maximum Daily Load (TMDL) of the specified substance that the waterbody can receive without violating WQSs, or demonstrate that WQSs are being met (CFR 2007).

TMDLs are established to determine the pollutant load reductions needed to achieve and maintain WQSs. A WQS is the combination of a designated use for a particular body of water and the water quality criteria designed to protect that use. Designated uses include activities such as swimming, drinking water supply, fish and shellfish propagation and harvest, etc. Water quality criteria can be either narrative statements or numeric values designed to protect the designated uses. Criteria may differ among waters with different designated uses.

The Maryland water quality regulations state that all surface waters of Maryland shall be protected for water contact recreation, fishing, and protection of aquatic life and wildlife (COMAR 2007a). The specific designated use of Corsica River of the Lower Chester River Mesohaline segment (also referred to as the Corsica River embayment) is Use II – Support of Estuarine and Marine Aquatic Life and Shellfish Harvesting (COMAR 2007b). The Maryland Department of the Environment (MDE) has identified the waters of the Corsica River of the Lower Chester River Mesohaline segment on the State's Integrated Report as impaired by the following pollutants (listing year and Integrated Report Assessment Unit Identification in parentheses): sediments – later changed to a total suspended solids (TSS) listing (1996; MD-CHSMH), nutrients (1996; MD-CHSMH), fecal coliform (1996; MD-CHSMH-Corsica_River), polychlorinated biphenyls (PCBs) in fish tissue (2002; MD-CHSMH-02130507), and impacts to biological communities (2004; MD-CHSMH) (MDE 2008).

Nitrogen and phosphorus TMDLs and a fecal coliform TMDL for the restricted shellfish harvesting portion of the Corsica River were approved by the US EPA in 2000 and 2005, respectively. The sediments listing will be addressed via the Chesapeake Bay TMDL scheduled to be established by the end of 2010. This document, upon US EPA approval, establishes a total PCB (tPCB) TMDL for the Corsica River of the Lower Chester River Mesohaline segment (MD-CHSMH-02130507). Data solicitation for PCB related information was conducted by MDE, and all readily available data have been considered.

PCBs are a class of man-made compounds that were manufactured and used for a variety of industrial applications. They consist of 209 related chemical compounds (congeners) that were manufactured and sold as mixtures under various trade names (QEA, 1999). Each of the 209 possible PCB compounds consists of two phenyl groups and one or more chlorine atoms. The congeners differ in the number and position of the chlorine atoms along the phenyl group. From the 1940s to the 1970s, they were extensively used as heat transfer fluids, flame retardants, hydraulic fluids, and dielectric fluids because of their dielectric and flame resistant properties. They have been identified as a pollutant of concern due to the following:

1. They are bioaccumulative and can cause both acute and chronic toxic effects;
2. They have carcinogenic properties;

3. They are persistent organic pollutants that do not readily breakdown in the environment.

In the late 1970s, concerns regarding potential human health effects led the United States government to take action to cease PCB production, restrict PCB use, and regulate the storage and disposal of PCBs. Despite these actions, PCBs are still being released into the environment through fires or leaks from old PCB containing equipment, accidental spills, burning of PCB containing oils, leaks from hazardous waste sites, etc. As PCBs tend to bioaccumulate in aquatic organisms including fish, people who ingest fish may become exposed to PCBs. In fact, elevated levels of PCBs in fish are one of the leading causes of fish consumption advisories in the United States.

The Corsica River of the Lower Chester River Mesohaline segment (MD-CHSMH-02130507) is identified as impaired by PCBs on the State's Integrated Report based on fish tissue tPCB data from MDE's monitoring program that exceeded the tPCB fish tissue listing threshold of 39 nanogram/gram (ng/g, ppb) – wet weight (MDE 2008, 72-74). Besides identifying impaired waterbodies, MDE also issues statewide and site-specific fish consumption advisories (ranging from 0 to 4 meals per month) and recommendations (ranging from 4 to 8 meals per month). Current fish consumption advisories for the Chester River and tributaries suggest limiting the consumption of the following fish species: channel catfish and white perch.

2. SETTING AND WATER QUALITY DESCRIPTION

2.1. General Setting

The Corsica River watershed is located within Queen Anne’s County. It drains to the Chester River, which eventually drains to the Chesapeake Bay (see Figure 2). The tidal portion of the watershed extends from its confluence with the Chester River to the Town of Centreville. The tidal range is 1.6 feet (0.488 meters (m)) based on the United States National Oceanic and Atmospheric Administration tidal station in Centreville Landing, MD. The depths of the river range from about 1-2 feet (0.3-0.6 m) at the headwaters of the tidal embayment to greater than 15 feet (4.6 m) prior to its confluence with the Chester River (MDE 2000).

There are three Tier II (i.e., high quality) stream segments (Benthic Index of Biotic Integrity/Fish Index of Biotic Integrity aquatic health scores > 4 – scale 1 to 5) located within the watershed requiring the implementation of Maryland’s antidegradation policy procedures. These include: Alder Branch, Mill Stream Branch, and Three Bridges Branch (COMAR 2007d; MDE 2009b). The total population in the Corsica River watershed is approximately 8,000 (US Census Bureau 2000).

The entire Corsica River watershed stretches over approximately 39 square miles (102 square kilometers (km²)). The tidal portion of the river is approximately 6 miles (9.7 km) in length. The watershed is predominately rural in nature consisting of 32.1% forest and 48.3% agricultural land (see Figure 1, Figure 3, and Table 1).

Table 1: Land Use Distribution in the Corsica River Watershed

Land Use	Area (km ²)	Percent of Total
Water	4.9	4.8%
Urban	11.0	10.8%
Barren	0.2	0.2%
Forest	32.9	32.1%
Agriculture	49.4	48.3%
Natural grass	0.0	0.0%
Wetland	3.9	3.9%
Total	102	100%

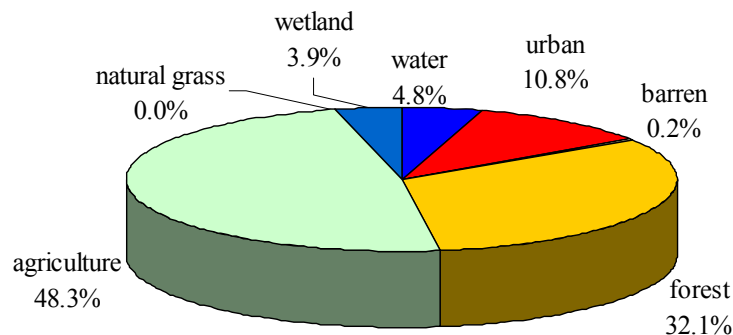


Figure 1: Land Use Distribution in the Corsica River Watershed

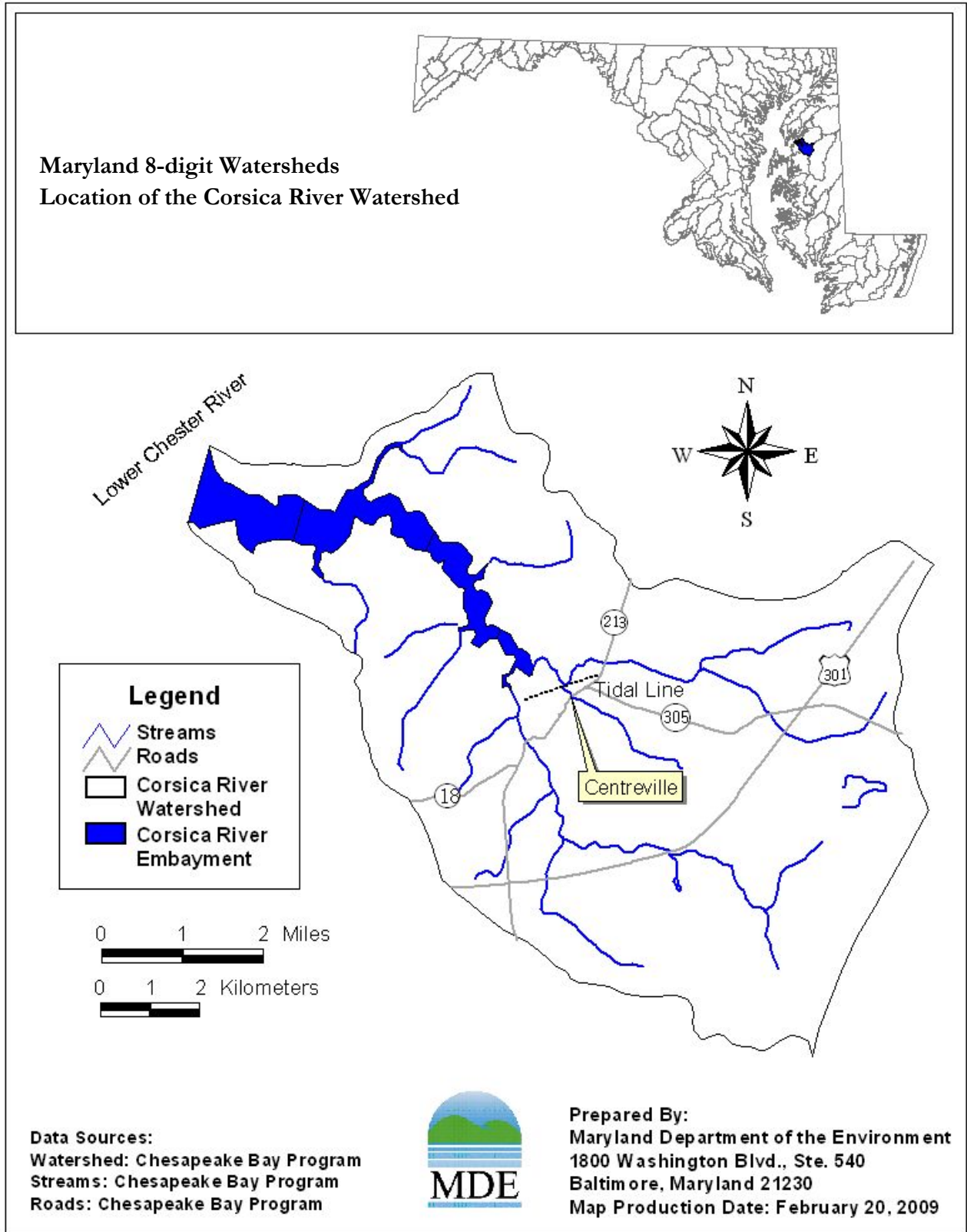


Figure 2: Location Map of the Corsica River Watershed and Embayment

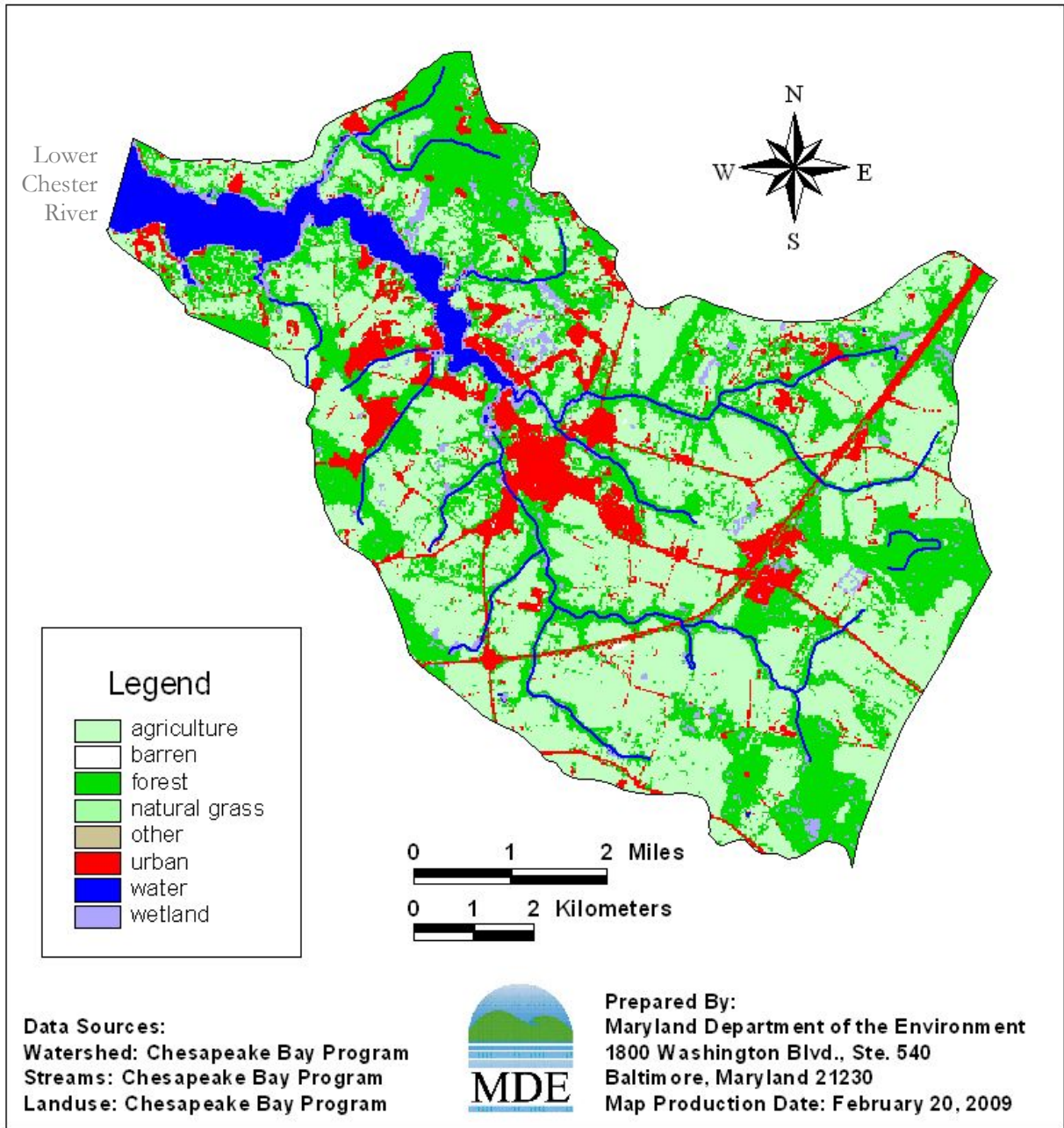


Figure 3: Land Use in the Corsica River Watershed

2.2. Water Quality Characterization and Impairment

The Maryland water quality regulations state that all surface waters of Maryland shall be protected for water contact recreation, fishing, and protection of aquatic life and wildlife (COMAR 2007a). The specific designated use of Corsica River of the Lower Chester River Mesohaline segment is Use II – Support of Estuarine and Marine Aquatic Life and Shellfish Harvesting (COMAR 2007b). The State of Maryland adopted three separate water column tPCB criteria: human health criterion for protection of human health associated with consumption of PCB contaminated fish, as well as fresh and salt water chronic tPCB criteria for protection of aquatic life. The Maryland human health tPCB criterion is set at 0.64 nanograms/liter (ng/L, ppt) (COMAR 2007c, US EPA 2006). This criterion is

based on a cancer slope factor of 2 milligrams/kilogram-day⁻¹ (mg/kg-day)⁻¹, bioconcentration factor of 31,200 liters/kilogram (L/kg), risk level of 10⁻⁵, lifetime risk level and exposure duration of 70 years, and fish intake of 17.5 grams/day (g/day). A cancer risk level provides an estimate of the additional incidence of cancer that may be expected in an exposed population. A risk level of 10⁻⁵ indicates a probability of one additional case of cancer for every 100,000 people exposed. The Maryland fresh and salt water chronic aquatic life tPCB criteria are set at 14 ng/L and 30 ng/L, respectively (COMAR 2007c; US EPA 2006). A tPCB sediment criterion has not been established within Maryland water quality standards.

In addition to the water column criteria described above, fish tissue monitoring data can serve as an indicator of PCB water quality conditions. The Maryland fish tissue monitoring data is used to issue fish consumption advisories/recommendations and determine whether Maryland waterbodies are meeting the “fishing” designated use. Currently Maryland applies 39 ng/g (ppb) as the tPCB fish tissue listing threshold (MDE 2008, 72-74). MDE has collected fish tissue samples in the Corsica River embayment in 2001 and 2003 (see Table 2). The average concentration for white perch exceeds the tPCB listing threshold, indicating PCB impairment.

Table 2: Fish Tissue tPCB Concentrations in the Corsica River Embayment (2001, 2003)

Station	Year	Species Name	Mean Lipid Content (%)	tPCBs* (ng/g wet weight)	Number of Individual Fish in a Composite	Exceed Maryland Threshold
CR	2001	Channel Catfish	1.72	23.9	1	No
CR	2001	Channel Catfish	0.97	22.1	1	No
CR	2001	White Perch	5.85	90.3	5	Yes
CR	2001	White Perch	6.38	86.0	5	Yes
CRSESN	2003	White Perch	2.36	48.2	4	Yes
CESESN	2003	White Perch	2.82	39.4	5	Yes

Note: * Actual values (i.e., not lipid normalized).

In 2006, sampling surveys were conducted by MDE to measure sediment and water column tPCB concentrations throughout the embayment. In 2006, 2008, and 2009 water column samples were also collected at five locations in the Corsica River nontidal watershed (GVL0003, GVL0007, TBB0005, UUU0004, and OMS0014). While none of the total averaged water column tPCB concentrations (particulate + dissolved) in the embayment (Stations XHH4818, XHH4933, XHH4249, and COR0056) exceed the 30 ng/L Maryland salt water chronic aquatic life tPCB criterion, all of them exceeded the 0.64 ng/L Maryland water column human health tPCB criterion (see Table 3). Figure 4 displays the locations of the Corsica River monitoring stations. Detailed tPCB results for each measurement are presented in Appendix A.

Table 3: Water Quality Monitoring Stations and Average tPCB Concentrations in the Corsica River Embayment, Watershed, and River Boundary (2006, 2008, 2009)

Station Name	Collection Year	Latitude	Longitude	Average Water Column Concentration (ng/L)			Sediment Concentration (ng/g dry weight)
				Dissolved	Particulate	Total	
XHH4818	2006	39.0816	-76.1376	0.20	0.60	0.80	2.66
XHH4933	2006	39.0824	76.1119	0.12	0.56	0.68	5.88
XHH4249	2006	39.0690	76.0860	0.80	1.65	2.45	13.89
COR0056	2006	39.0564	76.0728	1.88	8.67	10.55	11.11
XHH5305	2006	39.0889	-76.1589	0.08	0.64	0.72	9.03
GVL0003	2006	39.0480	-76.0620	0.05	0.48	0.53	NA
OMS0014	2008-9	39.0401	-76.0728	0.12	0.23	0.35	NA
TBB0005	2008-9	39.0542	-76.0545	0.17	0.10	0.27	NA
UUU0004	2008-9	39.0555	-76.0894	0.31	0.12	0.43	NA
GVL0007	2008-9	39.0435	-76.0527	0.22	0.08	0.30	NA

PCB analytical services were provided by the University of Maryland Center for Environmental Science (UMCES). PCB congeners were identified and quantified by high resolution gas chromatography with electron capture detection. UMCES uses a slightly modified version of the PCB congener specific method described in Ashley and Baker (1999), in which the identities and concentrations of each congener in a mixed Aroclor standard (25:18:18 mixture of Aroclors 1232, 1248, and 1262) are determined based on their chromatographic retention times relative to the internal standards (PCB 30 and PCB 204). Based on this method, 86 chromatographic peaks can be quantified (see Appendix I). Some of the peaks contain one PCB congener, while others are comprised of two or more co-eluting congeners. The PCB analysis presented in this document is based on tPCB concentrations that are calculated as the sum of the detected PCB congeners/congener groups representing most common congeners that were historically used in the Aroclor commercial mixtures.

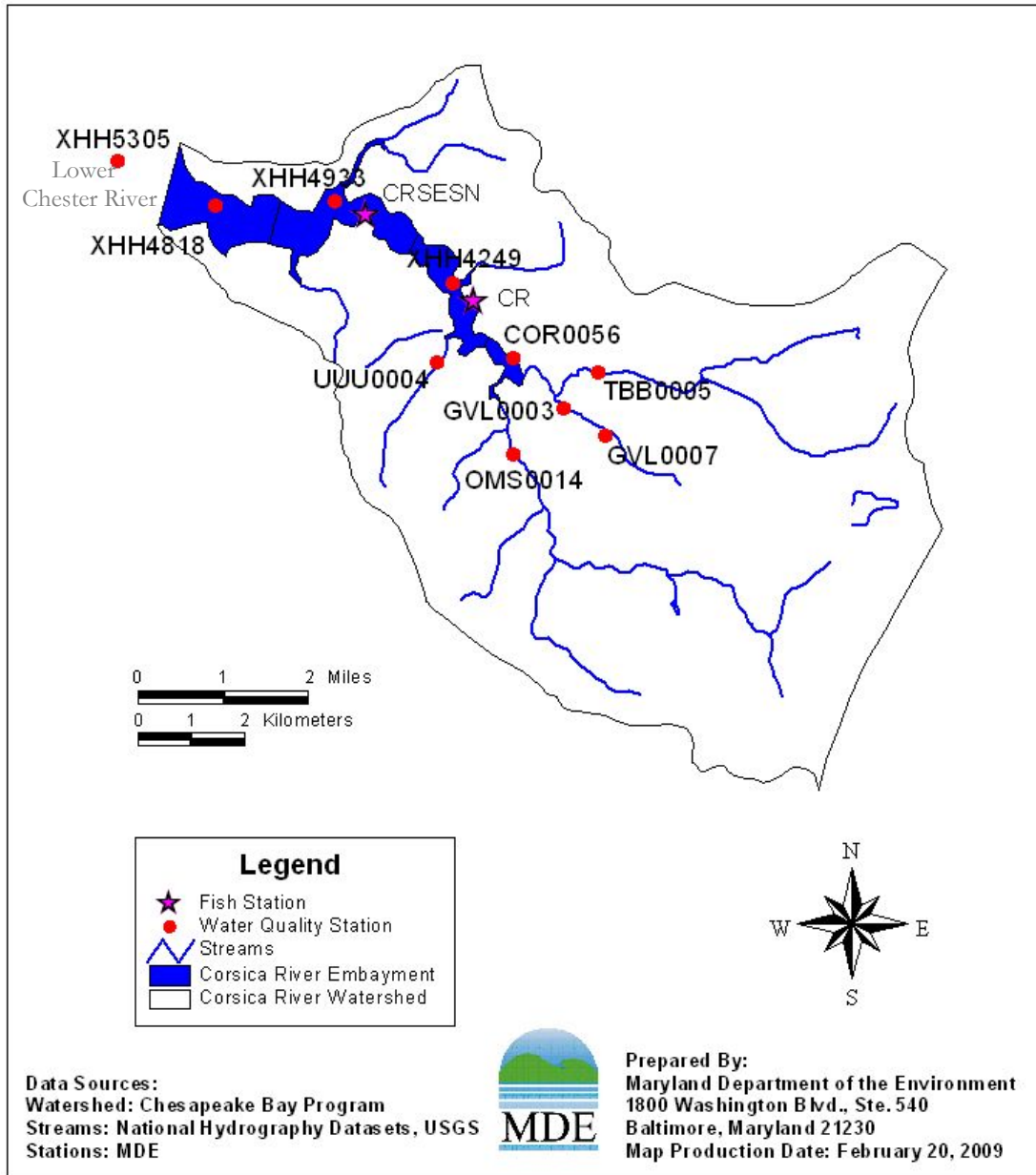


Figure 4: Water Quality Monitoring Stations in the Corsica River Watershed

2.3. Source Assessment

PCBs do not occur naturally in the environment. Therefore, unless existing or historical anthropogenic sources are present, their natural background levels are expected to be zero. However, although PCBs are no longer manufactured in the United States, they are still being released to the environment via accidental fires, leaks, or spills from older PCB-containing equipment; potential leaks from hazardous waste sites that contain PCBs; illegal or improper dumping; and disposal of PCB-containing products (e.g., transformers, old fluorescent lighting fixtures, electrical devices or appliances containing PCB capacitors, old microscope oil, and old hydraulic oil) into landfills not designed to handle hazardous waste. Once in the environment, PCBs do not readily break down and tend to cycle between various environmental media such as air, water, and soil. This section provides

a detailed description of the existing nonpoint and point sources that have been identified as contributing tPCB loads to the Corsica River embayment.

2.3.1. Nonpoint Sources

Nonpoint sources do not have a single discharge point, but rather can occur over a part of or the entire length of a waterbody. For the purpose of this TMDL, the following nonpoint sources have been identified: the Lower Chester River influence (conveying tPCB loads from the Upper Chesapeake Bay), resuspension and diffusion from the bottom sediments, watershed runoff (including runoff associated with atmospheric deposition to the watershed), and direct atmospheric deposition to the embayment.

Lower Chester River Influence

Based on the tPCB concentration measured at the mouth of Corsica River and the relatively high quantity of water flowing from the Lower Chester River to the embayment during the flood tides, the Lower Chester River tPCB Baseline Load of 936.5 g/year is the major source of tPCBs to the Corsica River embayment (see Table 6, Appendix C, and Appendix D).

The Susquehanna River is the major source of flow and PCBs to the Upper Chesapeake Bay (Ko and Baker 2004) including Chester and Corsica Rivers. In order to determine the temporal changes in tPCB loads from the Susquehanna River to the Upper Chesapeake Bay, Ko and Baker (2004) measured tPCB concentration downstream of the Susquehanna River and compared their results with those reported by Foster et al. (2000) and Godfrey et al. (1995). According to this analysis, flow normalized tPCB loadings decreased from 37 kg/m³/year in 1992 to 24 kg/m³/year in 1998. Based on these results, it is estimated that on average the tPCB concentrations in the Upper Chesapeake Bay are decreasing at a rate of 6.5% per year (Appendix H). This rate was applied in the model to account for the expected temporal changes in tPCB concentrations at the Corsica River embayment boundary.

Bottom Sediments (Resuspension and Diffusion)

Because PCBs tend to bind to sediments, a large portion of the tPCB loads delivered to the embayment from various sources will quickly end up in the bottom sediments. This accumulation of PCBs can subsequently become a significant source of PCBs to the water column in the embayment through resuspension and diffusion from the bottom sediments. Based on the measured tPCB concentrations in the water column and bottom sediments, the Bottom Sediment tPCB Baseline Load of 510.8 g/year is the second largest source of tPCBs to the Corsica River embayment (see Table 6, Appendix C, and Appendix D).

Atmospheric Deposition

Based on previous research conducted in the Chesapeake Bay area, a relatively small portion of the tPCB load to the Corsica River embayment can be attributed to atmospheric deposition. That being said, it should be pointed out that overall a net loss of tPCB occurs due to volatilization of the dissolved PCBs in the water column to the atmosphere (Totten et al, 2006). The TMDL analysis accounts for both atmospheric deposition and volatilization. The observed annual atmospheric tPCB loading to the entire surface of the Chesapeake Bay is approximately 38 ± 7 kg/year (Leister and Baker 1994). Based on the Chesapeake Bay surface area of 1.15×10^{10} m² and Corsica River

embayment surface area of $5.391 \times 10^6 \text{ m}^2$, the estimated direct tPCB atmospheric deposition to the surface of the Corsica River embayment is:

$$\frac{38}{(1.15 \times 10^{10})} \times (5.391 \times 10^6) \approx \mathbf{17.8 \text{ g/year}} \quad (\text{Calculation 1})$$

Using the same method, the atmospheric loading to the entire land surface of the watershed ($9.695 \times 10^7 \text{ m}^2$) is:

$$\frac{38}{(1.15 \times 10^{10})} \times (9.695 \times 10^7) \approx \mathbf{320.4 \text{ g/year}} \quad (\text{Calculation 2})$$

However, according to Totten et al. (2006) not all of the atmospheric deposition to the terrestrial part of the watershed is expected to be delivered to the embayment. Considering that the PCB pass-through efficiency, estimated by Totten et al. for the Delaware River watershed, is about 1%, the atmospheric tPCB loading to the Corsica River embayment from the watershed is approximately 3.2 g/year. The watershed runoff calculation below accounts for this load due to atmospheric deposition. Compared to other sources (see Table 6), atmospheric deposition constitutes a relatively small portion of the tPCB load delivered to the Corsica River embayment.

Watershed Runoff

The Total Watershed tPCB Baseline Load of the Corsica River was estimated by multiplying the mean water column tPCB concentration (0.38 ng/L) observed at the nontidal watershed stations (GVL0003, GVL0007, TBB0005, UUU0004, and OMS0014) by the average watershed stream flow.

Using the 9-year monthly mean flow at the USGS station located at Sallie Harris Creek (USGS 01492500) (see Figure 6) and ratio of the Corsica River watershed area to the USGS station drainage area, the Corsica River watershed average stream flow was estimated to be equal to $1.24 \text{ m}^3/\text{s}$ (43.7 cfs). The average stream flow was then used to calculate the watershed tPCB baseline load (Calculation 3).

$$\mathbf{\text{Watershed Baseline Load}} = 1.24 \text{ m}^3/\text{s} \times 0.38 \text{ ng/L} \times 1,000 \text{ L/m}^3 \times 10^{-9} \text{ g/ng} \times 60 \text{ minutes/hour} \times 60 \text{ seconds/minute} \times 24 \text{ hours/day} \times 365 \text{ days/year} = \mathbf{14.9 \text{ g/year}} \quad (\text{Calculation 3})$$

As there are no regulated point sources in the Corsica River nontidal watershed, all the Watershed Baseline Load is attributed to nonpoint sources; about 3.2 g/year are attributed to atmospheric deposition to the entire land surface of the watershed. The watershed runoff calculation accounts for this load due to atmospheric deposition. The remaining load is due to unidentified sources of PCB contamination from historical uses and releases. However, when compared with the Lower Chester River and Bottom Sediment Baseline Loads, the Total Watershed Baseline Load is insignificant and even its complete elimination would not result in noticeable decrease in the tPCB concentrations in the Corsica River embayment.

Contaminated Sites

One contaminated site, Banjo Lane (Latitude: 39.0451; Longitude: -76.0627), has been identified in the Corsica River watershed based on information gathered from US EPA's Superfund Database (US EPA 2007a) and MDE's Environmental Restoration and Redevelopment Program (MDE 2007a) (see Figure 5 and Table 4). However, PCBs were not detected at this contaminated site.

Table 4: Contaminated Site tPCB Baseline Load

Site Name	PCBs Detected	Baseline Load (g/year)
Banjo Lane	No	N/A

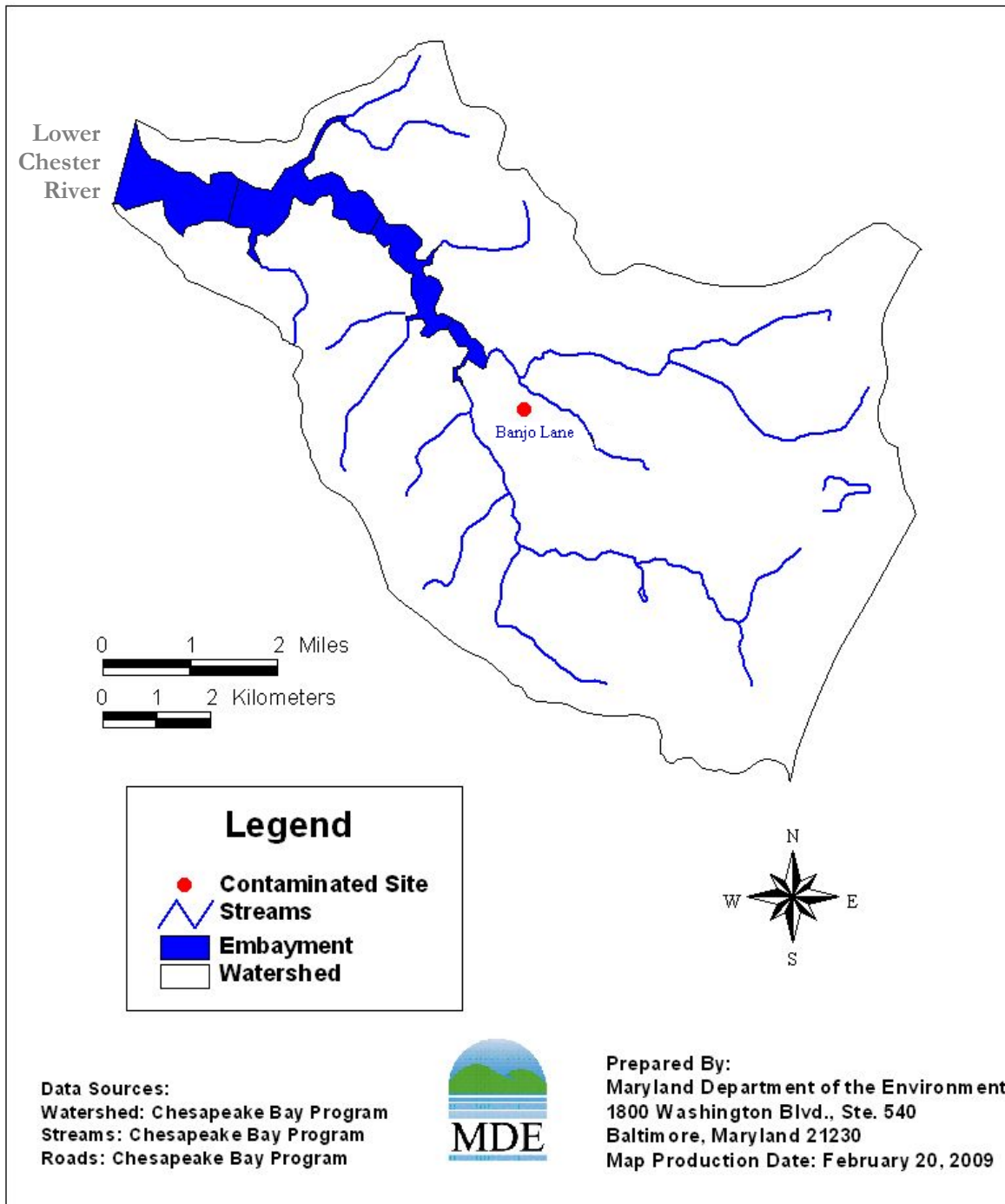


Figure 5: Location of the Contaminated Site in the Corsica River Watershed

2.3.2. Point Sources

The Department applies US EPA's requirement that "stormwater discharges that are regulated under Phase I or Phase II of the National Pollutant Discharge Elimination System (NPDES) storm water

program are point sources that must be included in the waste load allocation (WLA) portion of a TMDL” (US EPA 2002). Other point sources in the Corsica River watershed include one wastewater treatment plant (WWTP). While, for the purpose of this TMDL, the WWTP Baseline Load has been estimated, it has been considered to be *de minimis* (see Appendix J). This section provides detailed explanation about how the point source baseline loads have been estimated.

WWTP Process Water

Centreville WWTP (MD0020834) is the only WWTP located in the watershed (see Figure 6). This facility discharges directly to the tidal portion of the Corsica River. The baseline tPCB loading for this facility was calculated based on the permit design flow and the measured tPCB concentration of 1.85 ng/l. While discharge from Centreville WWTP is seasonal (December 1 through March 31), to account for a possible worst case scenario in the TMDL analysis a year round discharge has been assumed. The estimated tPCB baseline load for the Centreville WWTP is 1.28 g/year (see Table 5), which for the purpose of this analysis is treated as a separate model input.

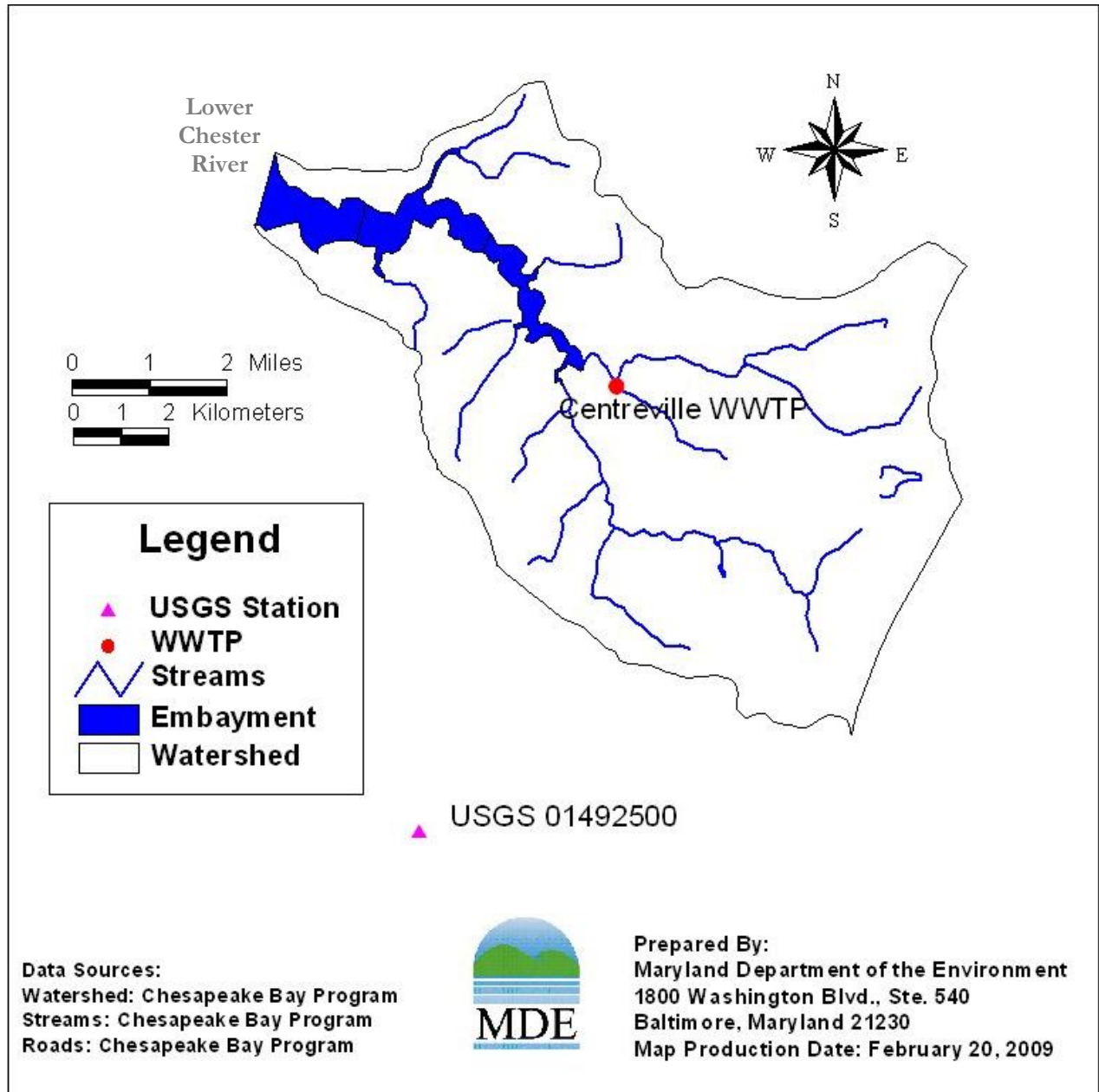


Figure 6: Location of the WWTP in the Corsica River Watershed and the USGS Stations Used for Flow Estimation

Table 5: WWTP tPCB Baseline Load

WWTP	tPCB Concentration (ng/L)	Design Flow (MGD)	Baseline Load (g/year)
Centreville WWTP	1.85	0.5	1.28

NPDES Regulated Stormwater

MDE estimates pollutant loadings from NPDES regulated stormwater areas based on urban land use classification within a watershed. This methodology assumes certain relationships between specific Maryland Department of Planning (MDP) urban land use classification (as modified by MDE; for further details see MDE 2009a) and various categories of NPDES regulated stormwater permits, whereby the identification of the existing permits determines what portion of the urban land use is considered regulated. Based on this information, the Chesapeake Bay Program Phase 5 (CBP P5) land use classification used in this TMDL analysis can be refined into more detailed classifications associated with specific categories of NPDES regulated stormwater permits, which can subsequently be used to estimate the NPDES Regulated Stormwater Baseline Load.

The Corsica River watershed is located in Queen Anne's County, which is not regulated under the NPDES Phase I or II jurisdictional municipal separate storm sewer system (MS4) permit. The only NPDES regulated stormwater permits in the watershed include state and federal general MS4s, industrial facilities, and construction sites, collectively termed "Other NPDES Regulated Stormwater."

Applying MDE's methodology, the areas regulated by the NPDES stormwater permits are represented by the CBP P5 urban land use categories associated with MDP industrial and institutional land use classifications (MDE 2009a). However, since these areas comprise a relatively small percentage of the total watershed area (i.e., 460 acres or 2.0 %), it was determined that the characterization of the associated tPCB loads was not practical. Consequently, NPDES regulated stormwater tPCB loads have not been characterized. Instead, these loads are included as part of the overall watershed nonpoint source load.

2.3.3. Summary

In summary, the Lower Chester River influence and resuspension and diffusion from the bottom sediments are the two major tPCB sources to the Corsica River embayment. The remaining sources (i.e., watershed runoff, atmospheric deposition to the embayment, and the one WWTP) comprise a relatively small portion of the Total Baseline Load. Table 6 summarizes the estimated Total tPCB Baseline Load from all identified source categories.

Table 6: Summary of the Total tPCB Baseline Load

Source	Baseline (g/year)	Baseline (%)
Lower Chester River Influence	936.5	63.2
Bottom Sediment (Resuspension and Diffusion)	510.8	34.5
Direct Atmospheric Deposition (to the Surface of the Embayment)	17.8	1.2
Watershed Nonpoint Sources	14.9	1.0
<i>Nonpoint Sources</i>	<i>1,480.0</i>	<i>99.9</i>
WWTP	1.28	0.1
<i>Point Sources</i>	<i>1.3</i>	<i>0.1</i>
Total	1,481	100

3. WATER COLUMN AND SEDIMENT TMDL ENDPOINTS

The overall objective of the tPCB TMDL established in this document is to ensure that the “fishing” designated use in the Corsica River embayment is protected. As described in Section 2.2, MDE evaluates PCB water quality conditions with the use of either the tPCB fish tissue listing threshold (39 ng/g) or the Maryland water column human health tPCB criterion (0.64 ng/L). In order to determine which one of these targets is more environmentally protective, the tPCB fish tissue listing threshold was converted to a corresponding tPCB water column concentration (see Equation 1 and Calculation 4). This was done with the use of a site-specific Adjusted Total Bioaccumulation Factor (Adj-tBAF) of 110,784 L/kg following the method of the Tidal Potomac River PCB TMDLs (see Appendix B for the derivation of the Adj-tBAF) (MDE 2007b).

$$\text{Water Column Target} = \text{Fish Tissue Concentration} \div \text{Adj-tBAF} \times \text{Unit} \quad (\text{Equation 1})$$

$$\text{Water Column Target} = 39 \text{ ng/g} \div 110,784 \text{ L/kg} \times \frac{1,000 \text{ g}}{1 \text{ kg}} = 0.35 \text{ ng/L} < 0.64 \text{ ng/L} \quad (\text{Calculation 4})$$

Based on this analysis, the water column tPCB target of 0.35 ng/L derived from the tPCB fish tissue listing threshold is more environmentally protective than the Maryland water column human health tPCB criterion of 0.64 ng/L, and therefore will be applied in this analysis as the site-specific tPCB water column TMDL endpoint.

Similarly, in order to establish whether levels of PCBs in the sediment are protective of the “fishing” designated use, a site-specific tPCB sediment target for the Corsica River embayment was derived based on the tPCB fish tissue listing threshold (see Equation 2 and Calculation 5). This was done with the use of a site-specific adjusted sediment bioaccumulation factor (Adj-SediBAF) of 4.5 (unitless) following the method of the Tidal Potomac River PCB TMDLs (see Appendix B for the derivation of the Adj-SediBAF) (MDE 2007b).

$$\text{Sediment Target} = \frac{\text{Fish Tissue Concentration}}{\text{Adj-SediBAF}} \quad (\text{Equation 2})$$

$$\text{Sediment Target} = \frac{39 \text{ ng/g}}{4.5} = 8.7 \text{ ng/g} \quad (\text{Calculation 5})$$

Both the site-specific tPCB water column and sediment targets will be used as TMDL endpoints and the more restrictive one will determine the actual TMDL (Section 4.2).

4. TOTAL MAXIMUM DAILY LOADS AND LOAD ALLOCATIONS

4.1. Overview

A TMDL is the total amount of impairing substance that a waterbody can receive and still meet WQSSs. The TMDL may be expressed as a mass per unit time, toxicity, or other appropriate measure and should be presented in terms of wasteload allocations (WLAs), load allocations (LAs), and either implicitly or explicitly margin of safety (MOS) (CFR 2007):

$$\text{TMDL} = \text{WLAs} + \text{LAs} + \text{MOS}$$

(Equation 3)

This section describes how the tPCB TMDL and the corresponding LAs and WLAs have been developed for the Corsica River embayment. The analysis framework for simulating tPCB concentrations is described in Section 4.2, Section 4.3 addresses critical conditions and seasonality, and Section 4.4 presents the allocation of loads between point and nonpoint sources. The MOS is discussed in Section 4.5. Finally, the TMDL is summarized in Section 4.6.

4.2. Analysis Framework

A tidal prism model, which incorporates the influences of both fresh water discharge and tidal flushing was used to simulate the dynamic interactions between the water column and bottom sediments within the Corsica River embayment and the Chester River (MDE 2005, Kuo et al. 2005). In general, tidal waters are exchanged through their connecting boundaries. Within the Corsica River embayment, the dominant processes affecting the transport of PCBs throughout the water column include: the tidal influence, fresh water discharge, the exchange with the atmosphere (through deposition and volatilization) and the exchange with the bottom sediments (through diffusion, resuspension, and settling). Burial to the deeper inactive layers and the exchange with the water column (through diffusion, resuspension, and settling) are the dominant processes affecting the transport of PCBs in the bottom sediments. Technical description of the model is presented in Appendix C and Appendix D.

The observed tPCB concentrations were used as the inputs to the model representing baseline (2006) conditions. Based on the available literature, the TMDL methodology assumes that on average the tPCB concentrations in the Upper Chesapeake Bay are decreasing at a rate of 6.5% per year (see Section 2.3.1 and Appendix H). All other inputs (i.e., fresh water inputs, tidal exchange rates, atmospheric exchange rates, sediment and water column exchange rates, and burial rates) were kept constant.

The model was run for 20,000 days to predict the time needed for the water column tPCB concentration to meet the site-specific tPCB water column TMDL endpoint. The results indicated that when the site-specific water column TMDL endpoint (0.35 ng/L) was met, the site-specific sediment TMDL endpoint (8.7 ng/g) was met as well. Figure 7 and Figure 8 show the simulated results: after 3,206 days (about 9 years) the water column tPCB concentration reached 0.35 ng/L (see Figure 7), at which time the sediment tPCB concentration was equal to 2.1 ng/g (see Figure 8).

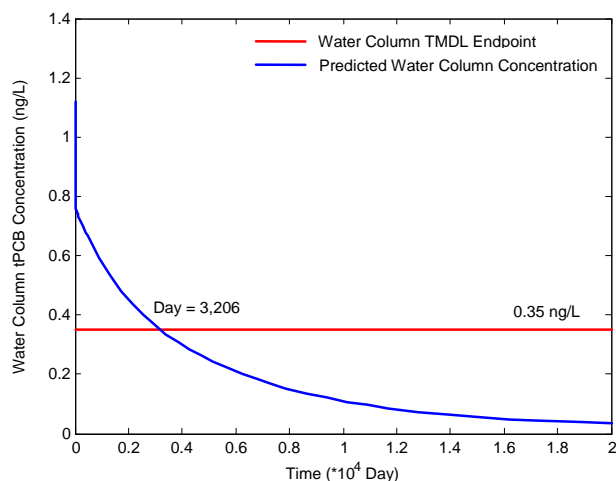


Figure 7: Changes in Water Column tPCB Concentration with Time

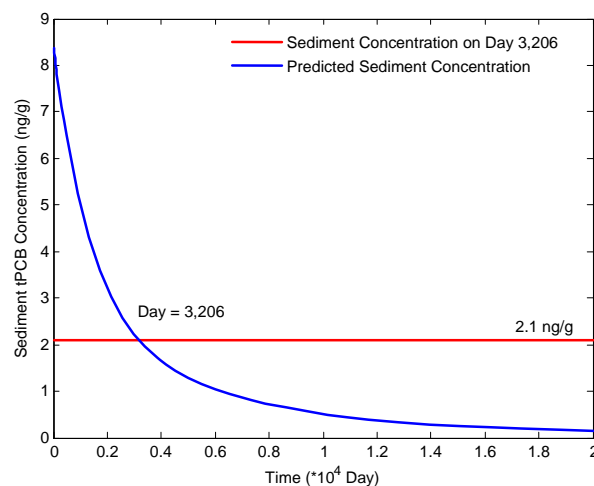


Figure 8: Changes in Sediment tPCB Concentration with Time

As presented in Table 6, the Lower Chester River (conveying tPCB loads from the Chesapeake Bay) as well as resuspension and diffusion from the bottom sediments are the two primary sources of tPCB baseline loads resulting in the PCB impairment in the Corsica River embayment. Attainment of the site-specific tPCB water quality TMDL endpoints will only be possible with significant reduction in these primary loadings (see Table 7), which is expected to take place over time as the Upper Chesapeake Bay concentrations continue to decline resulting also in natural attenuation of tPCB levels in the legacy sediments (i.e., the covering of contaminated sediments with newer, less contaminated materials, flushing of sediments during periods of high stream flow, and biodegradation). Assuming that the tPCB concentrations in the Upper Chesapeake Bay will continue to decline, at or above the current rate (see Section 2.3.1 and Appendix H), no additional tPCB reductions will be necessary to meet the “fishing” designated use in the Corsica River embayment.

4.3. Critical Conditions and Seasonality

Federal regulations require TMDL determinations to take into account the impact of critical conditions and seasonality on water quality (CFR 2007). The intent of this requirement is to ensure that the water quality is protected during the most vulnerable times.

Because all the water column tPCB samples in the embayment were collected within the same month (Appendix A), no temporal trends could be established. However, since tPCB levels in fish become elevated due to long-term exposure, rather than temporary spikes in water column tPCB concentration, it has been determined that the selection of the average tPCB concentration as representing the baseline conditions adequately considers the impact of seasonal variations and critical conditions on the “fishing” designated use in the Corsica River embayment. Furthermore, the site-specific tPCB water column TMDL endpoint used to develop this TMDL is lower than the Maryland fresh and salt water chronic aquatic life tPCB criteria protective of fish and wildlife as well as the Maryland water column human health tPCB criterion protective of human health associated with consumption of PCB contaminated fish.

Selection of the average tPCB concentrations to represent the baseline model conditions will not affect the TMDL, which was established to meet the site-specific tPCB water column and sediment TMDL endpoints at all times. However, the length of time required to reach the TMDL endpoints will depend on the selection of the baseline conditions. To better understand this concept, the upper and lower 95% confidence intervals (CIs) of the mean water column tPCB concentrations were estimated and used in the analysis. The time duration required to reach the TMDL endpoints increased by about 27 percent (2.4 years) when the upper CI (vs. the mean) was used as the baseline tPCB water column concentration. Detailed results are presented in Appendix E.

4.4. TMDL Allocations

All TMDLs need to be presented in terms of WLAs for point sources and LAs for nonpoint source loads generated within the assessment unit and if applicable LAs for the natural background, tributary, and adjacent segment loads (CFR 2007). The State reserves the right to revise these allocations provided the revisions are consistent with achieving WQs. This section summarizes the tPCB allocations established to meet the “fishing” designated use in the Corsica River embayment.

4.4.1. Point Sources

Waste Water Treatment Plants

Centreville WWTP (MD0020834) is the only WWTP located in the watershed. The estimated WWTP tPCB Baseline Load is 1.28 g/year (see Table 5 and Table 6). For more information on methods used to calculate this load, see Section 2.3.2. At 0.2% of the TMDL, the Corsica River WWTP Baseline Load was considered *de minimis*, therefore no appreciable environmental benefit would be gained by reducing this load (see Appendix J). The elevated tPCB concentrations in wastewater are believed to be primarily due to external sources (e.g., source water, atmospheric deposition, and stormwater runoff) infiltrating the waste water collection system through broken sewer lines and connections. There are currently no effluent PCB limits established in the discharge permits for WWTPs. The sensitivity analysis provided in this document (Appendix J) suggests that there is no "reasonable potential" for PCBs to exceed water quality even at 100 times the current WWTP loadings. Inclusion of a WLA in this document does not reflect any determination to impose an effluent limit.

NPDES Regulated Stormwater

Per US EPA requirements, “stormwater discharges that are regulated under Phase I or Phase II of the NPDES stormwater program are point sources that must be included in the WLA portion of a TMDL” (US EPA 2002). Phase I and II permits can include the following types of discharges:

- Small, medium, and large MS4s – these can be owned by local jurisdictions, municipalities, and state and federal entities (e.g., departments of transportation, hospitals, military bases);
- Industrial facilities permitted for stormwater discharges; and
- Small and large construction sites.

US EPA recognizes that available data and information are usually not detailed enough to determine WLAs for NPDES regulated stormwater discharges on an outfall-specific basis (US EPA 2002). Therefore, NPDES regulated stormwater allocations are generally expressed as a single WLA. Upon

approval of the TMDLs, “NPDES-regulated municipal stormwater and small construction storm water discharges effluent limits should be expressed as BMPs or other similar requirements, rather than as numeric effluent limits” (US EPA 2002).

At this point, disaggregation of the NPDES regulated stormwater loads in Corsica River watershed is not practical, and for the purposes of this analysis NPDES Regulated Stormwater tPCB Baseline Load has not been characterized. Instead, this load is included as part of the overall watershed nonpoint source LA (see Section 2.3.2).

4.4.2. Nonpoint Sources

Load allocations have been assigned to the following nonpoint sources: the Lower Chester River, bottom sediment, direct atmospheric deposition to the surface of the embayment, and watershed nonpoint sources. Loadings from the Lower Chester River (conveying tPCB loads from the Chesapeake Bay) and bottom sediments are the most significant sources of PCBs to the Corsica River embayment and as such are the only ones requiring reductions in order to meet the “fishing” designated use in the Corsica River embayment. These reductions are expected to take place over time as the Upper Chesapeake Bay concentrations continue to decline resulting also in natural attenuation of tPCB levels in the legacy sediments. Assuming that the tPCB concentrations in the Upper Chesapeake Bay will continue to decline at or above the current rate, no additional tPCB load reductions should be required for the remaining nonpoint sources. The remaining LAs were set as equivalent to the corresponding baseline loads (see Table 7).

4.5. Margin of Safety

All TMDLs must include a margin of safety to account for the lack of knowledge and the many uncertainties in the understanding and simulation of water quality parameters in natural systems. The MOS is intended to account for such uncertainties in a manner that is conservative from the standpoint of environmental protection. Considering the uncertainty surrounding the estimated rate at which tPCB concentrations are decreasing in the Upper Bay region and the variation in tPCB concentrations within the 95% CIs, MDE decided to apply a 10% MOS in order to provide an adequate and environmentally protective TMDL (see Table 7).

4.6. Summary of Total Maximum Daily Load Allocations

Table 7 summarizes the tPCB TMDL allocations for the Corsica River embayment as well as the corresponding baseline loads, the maximum daily load (MDL), and the associated load reductions.

**Table 7: Summary of tPCB Baseline Loads,
TMDL Allocations, MDL, and Associated Percent Reductions**

Source	Baseline Load (g/year)	TMDL (g/year)	Load Reduction (%)	MDL* (g/day)
Lower Chester River Influence	936.5	518.9	44.6	5.123
Bottom Sediment (Resuspension and Diffusion)	510.8	127.6	75.0	1.260
Direct Atmospheric Deposition (to the Surface of the Embayment)	17.8	17.8	0.0	0.176
Watershed Nonpoint Sources	14.9	14.9	0.0	0.147
<i>Nonpoint Sources/Load Allocations</i>	<i>1,480.0</i>	<i>679.2</i>	<i>54.1</i>	<i>6.706</i>
WWTP [△]	1.28	1.28	0.0	0.011
<i>Point Sources/Waste Load Allocations</i>	<i>1.3</i>	<i>1.3</i>	<i>0.0</i>	<i>0.011</i>
<i>MOS</i>	<i>-</i>	<i>75.6</i>	<i>-</i>	<i>0.746</i>
Total	1,481	756	49.0	7.463

Notes: [△] WWTP Baseline Load was considered to be *de minimis*.

^a For details see Appendix G.

5. ASSURANCE OF IMPLEMENTATION

As discussed in the previous sections, the Lower Chester River influence (conveying tPCB loads from the Upper Chesapeake Bay) and resuspension and diffusion from the bottom sediments have been identified as the two major sources of tPCBs to the Corsica River embayment. As described in Section 2.3.1, it has been estimated that on average the tPCB concentrations in the Upper Chesapeake Bay are decreasing at a rate of 6.5% per year. Given this rate of decline, the tPCB levels in the Corsica River embayment are expected to decline over time due to natural attenuation, such as the burial of contaminated sediments with newer, less contaminated materials, flushing of sediments during periods of high stream flow, and biodegradation.

Aside from the processes of natural attenuation, there are two alternatives that can assist in reducing the tPCB concentrations in the water column so as to meet WQSS. First, the physical removal of the PCB-contaminated sediments (i.e., dredging) would minimize one of the primary sources of tPCB to the water column. Second, a reduction in the Chesapeake Bay tPCB loads would greatly accelerate the process of attenuation.

In this particular situation, dredging is the least desirable alternative because of its potential biological destruction. It damages the habitat of benthic macroinvertebrates and may directly kill some organisms. The process of stirring up suspended sediments during dredging may damage the gills and/or sensory organs of benthic macroinvertebrates and fish. Suspended sediments can also affect the prey gathering ability of sight-feeding fish. In addition, the resuspension of contaminated sediments provides organisms with additional exposure to PCBs.

In the case of the Corsica River natural attenuation is a better implementation method because it involves less habitat disturbance/destruction and is less costly. Discovering and remediating any existing PCB land sources throughout the Chesapeake Bay watershed via future TMDL development and implementation efforts will further help to meet water quality goals in the Corsica River embayment. MDE's Water Quality Standards Section will continue to monitor PCB levels in Maryland fish. This information will be used to evaluate the PCB impairment in the Corsica River embayment on an ongoing basis.

REFERENCES

- Ashley, J.T.F., and J.E. Baker. 1999. Hydrophobic Organic Contaminants in Surficial Sediments of Baltimore Harbor: Inventories and Sources. *Environmental Toxicology and Chemistry* 18(5): 838-849.
- CFR (Code of Federal Regulations). 2007. 40 CFR 130.7. http://www.gpo.gov/nara/cfr/waisidx_98/40cfr130_98.html (Accessed March, 2007).
- Chapra, S.C. 1997. *Surface Water-Quality Modeling*. New York, NY: McGraw Hill.
- COMAR (Code of Maryland Regulations). 2007a. 26.08.02.07. <http://www.dsd.state.md.us/comar/searchall.aspx> (Accessed November, 2007).
- _____. 2007b. 26.08.02.08 G(2)(c). <http://www.dsd.state.md.us/comar/searchall.aspx> (Accessed November, 2007).
- _____. 2007c. 26.08.02.03-2 G(4). <http://www.dsd.state.md.us/comar/searchall.aspx> (Accessed November, 2007).
- _____. 2007d. 26.08.02.04 & 26.08.02.04-1. <http://www.dsd.state.md.us/comar/searchall.aspx> (Accessed November, 2007).
- De Bruijn, J., F. Busser, W. Seinen, and J. Hermens. 1989. Determination of Octanol/Water Partition Coefficients for Hydrophobic Organic Chemicals with the “Slow-Stirring” Method. *Environmental Toxicology and Chemistry*. 8: 499-512.
- DRBC (Delaware River Basin Commission). 2003. *PCB Water Quality Model for Delaware Estuary*. West Trenton, NJ: Delaware River Basin Commission.
- Foster, G.D., K.A. Lippa, and C.V. Miller. 2000. Seasonal Concentrations of Organic Contaminants at the Fall Line of the Susquehanna River Basin and Estimated Fluxes to Northern Chesapeake Bay, USA. *Environmental Toxicology and Chemistry* 19: 992–1001.
- Godfrey, J.T., G.D. Foster, and K.A. Lippa. 1995. Estimated Annual Loads of Selected Organic Contaminants to Chesapeake Bay via a Major Tributary. *Environmental Toxicology and Chemistry* 29: 2059–2064.
- Hoke, R.A., G.T. Ankley, A.M. Cotter, T. Goldstein, P.A. Kosian, G.L. Phipps, and F.M. VanderMeiden. 1994. Evaluation of Equilibrium Partitioning Theory for Predicting Acute Toxicity of Field Collected Sediments Contaminated with DDT, DDE and DDD to the Amphipod *Hyaella Azteca A*. *Environmental Toxicology and Chemistry* 13: 157-166.
- Ko F.C., and J.E. Baker. 2004. Seasonal and Annual Loads of Hydrophobic Organic Contaminants from the Susquehanna River Basin to the Chesapeake Bay. *Marine Pollution Bulletin* 48: 840–851.
- Kuo, A., A. Butt, S. Kim, and J. Lin. 1998. Application of a Tidal Prism Water Quality Model to Virginia Small Coastal Basins. *SRAMSOE* No. 348.

- Kuo, A., K. Park, S. Kim, and J. Lin. 2005. A Tidal Prism Water Quality Model for Small Coastal Basins. *Coastal Management*. 33: 101-117.
- Leister, D.L., and J. E. Baker. 1994. Atmospheric Deposition of Organic Contaminants to the Chesapeake Bay. *Atmospheric Environment* 28: 1499–1520.
- MDE (Maryland Department of the Environment). 2000. *Total Maximum Daily Loads of Nitrogen and Phosphorus for Corsica River*.
http://www.mde.state.md.us/Programs/WaterPrograms/TMDL/ApprovedFinalTMDL/tmdl_corsica.asp (Accessed March, 2009).
- _____. 2005. *Total Maximum Daily Loads of Fecal Coliform for Restricted Shellfish Harvesting Areas in the Wicomico River Watershed Basin (Charleston Creek and Chaptico Bay) in Charles and St. Mary's Counties, Maryland*.
http://www.mde.state.md.us/assets/document/TMDL_Wicomico_River_092804_final.pdf (Accessed October, 2008)
- _____. 2007a. *Environmental Restoration and Redevelopment Program Comprehensive Database*. Baltimore, MD: Maryland Department of the Environment (Accessed August, 2007).
- _____. 2007b. *Total Maximum Daily Loads of Polychlorinated Biphenyls (PCBs) for Tidal Portions of the Potomac and Anacostia Rivers in the District of Columbia, Maryland, and Virginia*. Rockville, MD: Interstate Commission on the Potomac River Basin. Also Available at
http://www.mde.state.md.us/Programs/WaterPrograms/TMDL/ApprovedFinalTMDL/TMDL_final_Potomac_PCBs.asp#PCBs_TMDL_Potomac_River_Middle_Tidal.
- _____. 2008. *The 2008 Integrated Report of Surface Water Quality in Maryland*. Baltimore, MD: Maryland Department of the Environment. Also Available at
http://www.mde.state.md.us/Programs/WaterPrograms/TMDL/Maryland%20303%20dlis/t/2008_Final_303d_list.asp.
- _____. 2009a. *Memorandum: Maryland's Approach for Calculating Nutrient and Sediment Stormwater Wasteload Allocations in Local Nontidal Total Maximum Daily Loads and the Chesapeake Bay Total Maximum Daily Load*. Baltimore, MD: Maryland Department of the Environment.
- _____. 2009b. *Maryland Tier II Dataset*. Baltimore, MD: Maryland Department of the Environment.
- QEA (Quantitative Environmental Analysis, LLC). 1999. *PCBs in the Upper Hudson River – Volume I, Historical Perspective and Model Overview*. Albany, NY: Quantitative Environmental Analysis, LLC – Prepared for General Electric Company.
- Shen, J., H. Wang, and M. Sisson. 2002. *Application of an Integrated Watershed and Tidal Prism Model to the Poquoson Coastal Embayment*. Gloucester Point, VA: Virginia Institute of Marine Science: Special Report 380 submitted to Department of Environmental Quality, Commonwealth of Virginia.
- Thomann R.V., and J.A., Mueller 1987. *Principles of Surface Water Quality Modeling and Control*. New York City, NY: Harper & Row.

- Totten, L.A., M. Panangadan, S.J. Eisenreich, G.J. Cavallo, and T.J. Fikslin. 2006. Direct and Indirect Atmospheric Deposition of PCBs to the Delaware River Watershed. *Environmental Science & Technology* 40: 2171-2176.
- US Census Bureau. 2000. *2000 Census*. Washington, DC: US Census Bureau.
- US EPA (U.S. Environmental Protection Agency). 1991. *Technical Support Document (TSD) for Water Quality-based Toxics Control*. Washington, DC: U.S. Environmental Protection Agency. Also Available at <http://www.epa.gov/npdes/pubs/owm0264.pdf>.
- _____. 2000. *Methodology for Deriving Ambient Water Quality Criteria for the Protection of Human Health (2000)*. Washington, DC: U.S. Environmental Protection Agency, Office of Water: DC: EPA-822-B-00-004.
- _____. 2002. *Establishing Total Maximum Daily Load (TMDL) Wasteload Allocations (WLAs) for Storm Water Sources and NPDES Permit Requirements Based on Those WLAs*. Washington, DC: U.S. Environmental Protection Agency.
- _____. 2003. *Methodology for Deriving Ambient Water Quality Criteria for the Protection of Human Health (2000). Technical Support Document Volume 2: Development of National Bioaccumulation Factors*. Washington, DC: U.S. Environmental Protection Agency, Office of Water: EPA-822-R-03-030.
- _____. 2004. *The Incidence and Severity of Sediment Contamination in Surface Waters of the United States: National Sediment Quality Survey, Second Edition*. Washington, DC: U.S. Environmental Protection Agency, Office of Science and Technology: EPA-823-R-04-007.
- _____. 2006. *National Recommended Water Quality Criteria*. Washington, DC: U.S. Environmental Protection Agency, Office of Science and Technology: 4304T.
- _____. 2007a. *Superfund Site Information Database*. <http://cfpub.epa.gov/supercpad/cursites/srchsites.cfm> (Accessed August, 2007).
- _____. 2007b. *Options for the Expression of Daily Loads in TMDLs (DRAFT 6/22/07)*. Washington, DC: U.S. Environmental Protection Agency, Office of Wetlands, Oceans & Watersheds. Also Available at www.epa.gov/owow/tmdl/draft_daily_loads_tech.pdf.

Appendix A. List of Individual tPCB Measurements

The Corsica River polychlorinated biphenyl (PCB) data were collected in 2001, 2003, 2006, 2008, and 2009. The observed total polychlorinated biphenyl (tPCB) concentrations in fish tissue, sediment, and water column are listed in Table A-1, Table A-2, and Table A-3.

Table A-1: Fish Tissue tPCB Concentrations

Station	Fish Species	Date	tPCB* (ng/g – wet weight)
CR	Channel Catfish	9/19/2001	23.9
CR	Channel Catfish	9/19/2001	22.1
CR	White Perch	9/19/2001	90.3
CR	White Perch	9/19/2001	86.0
CRSESN	White Perch	7/24/2003	48.2
CRSESN	White Perch	7/24/2003	39.4

Note: *Actual values (i.e., not lipid normalized).

Table A-2: Sediment tPCB Concentrations

Station	Date	tPCB (ng/g – wet weight)
COR 0056	11/29/2006	11.1
XHH 4249	11/29/2006	13.9
XHH 4933	11/29/2006	5.9
XHH 4818	11/29/2006	2.7
XHH 5305	11/29/2006	9.0

Table A-3: Water Column tPCB Concentrations

Station	Date	Particulate (ng/L)	Dissolved (ng/L)	Total (ng/L)
GVL 0003	11/29/2006	0.51	0.02	0.53
GVL 0003	12/06/2006	0.63	0.07	0.70
GVL 0003	12/13/2006	0.29	0.05	0.35
COR 0056	11/29/2006	0.00	0.09	0.09
COR 0056	12/06/2006	25.52	5.18	30.71
COR 0056	12/13/2006	0.49	0.36	0.85
XHH 4249	11/29/2006	4.31	0.22	4.53
XHH 4249	12/06/2006	0.33	2.12	2.44
XHH 4249	12/13/2006	0.32	0.05	0.37
XHH 4933	11/29/2006	0.80	0.02	0.81
XHH 4933	12/06/2006	0.24	0.03	0.27
XHH 4933	12/13/2006	0.65	0.31	0.96
XHH 4818	11/29/2006	0.47	0.12	0.59
XHH 4818	12/06/2006	0.87	0.37	1.24
XHH 4818	12/13/2006	0.45	0.11	0.55
XHH 5305	11/29/2006	0.94	0.04	0.98
XHH 5305	12/06/2006	0.56	0.02	0.58
XHH 5305	12/13/2006	0.44	0.16	0.60
GVL 0007	12/2008	0.03	0.08	0.11
GVL 0007	03/2009	0.20	0.43	0.63
GVL 0007	05/2009	0.02	0.16	0.18
OMS 0014	12/2008	0.02	0.09	0.12
OMS 0014	03/2009	0.23	0.06	0.29
OMS 0014	05/2009	0.44	0.21	0.65
TBB 0005	12/2008	0.08	0.09	0.17
TBB 0005	03/2009	0.05	0.24	0.29
TBB 0005	05/2009	0.17	0.17	0.33
UUU 0004	12/2008	0.05	0.15	0.20
UUU 0004	03/2009	0.08	0.24	0.32
UUU 0004	05/2009	0.23	0.55	0.78

Appendix B. Derivation of Adj-tBAFs and Adj-SediBAFs

This appendix describes how the site-specific Adjusted Total Bioaccumulation Factor (Adj-tBAF) and Adjusted Sediment Bioaccumulation Factor (Adj-SediBAF) were derived. These values are then used to convert the total Polychlorinated Biphenyl (tPCB) fish tissue listing threshold to the corresponding site-specific tPCB water column and sediment concentrations protective of the “fishing” designated use in the Corsica River embayment. These methods are based on the approach used in the development of the Tidal Potomac River PCB TMDLs (MDE 2007b).

I. Data Description

The site-specific observation-based Adj-tBAFs and Adj-SediBAFs were calculated based on the available tPCB concentrations for the various fish species and accompanying water column and sediment samples collected in the Corsica River embayment. Each fish species was assigned a trophic level and home range (Table B-1). The Adj-tBAFs and Adj-SediBAFs were calculated based on the geometric mean tPCB concentrations of all the water quality samples within each species’ home range.

Table B-1: Trophic Levels and Home Ranges of Sampled Fish Species

Common Name	Scientific Name	Trophic Level	Home Range (Mile)
Channel Catfish	<i>Ictalurus punctatus</i>	Benthivore-generalist	5
White Perch	<i>Morone americana</i>	Predator	10

II. Total BAFs

The Total Bioaccumulation Factors (BAFs) for each fish sample (individual or composited) was calculated using Equation B1 (US EPA 2003):

$$\text{Total BAF} = \frac{[\text{tPCB}]_{\text{fish}}}{[\text{tPCB}]_{\text{water}}} \quad (\text{B1})$$

Where: $[\text{tPCB}]_{\text{fish}}$ = fish tissue tPCB concentration (ng/kg – wet weight)
 $[\text{tPCB}]_{\text{water}}$ = geometric mean of water column tPCB concentrations within fish species’ home range (ng/L).

Next, for fish species with more than one sample, a single Total BAF was calculated as the median of the applicable total BAFs.

III. Baseline BAFs

As the Total BAFs vary depending on the food habits and lipid concentration of each fish species and on the freely-dissolved tPCB concentrations in ambient water, it was determined that for the purpose of the TMDL analysis, Adj-tBAFs should be used. To calculate the site-specific Adj-tBAFs, first Baseline BAFs were calculated as recommended by US EPA (2000):

$$\text{Baseline BAF} = \frac{[\text{tPCB}]_{\text{fish}} \div \% \text{Lipid}}{[\text{tPCB}]_{\text{water}} \times \% \text{fd}} \quad (\text{B2})$$

FINAL

Where: $[tPCB]_{fish}$ = fish tissue tPCB concentration (ng/kg – wet weight)
 $[tPCB]_{water}$ = geometric mean of water column tPCB concentrations within fish species' home range (ng/L)
 %lipid = fraction of fish tissue that is lipid
 %fd = fraction of tPCB concentration in ambient water that is freely-dissolved.

Again, the above calculation was done for each fish sample (individual or composited). Next, for fish species with more than one sample, a single Baseline BAF was calculated as the median of the applicable Baseline BAFs.

The freely-dissolved tPCBs are those not associated with dissolved organic carbon (DOC) or particulate organic carbon (POC). The %fd can be calculated as (US EPA 2003):

$$\%fd = \frac{1}{1 + POC \times K_{ow} + DOC \times 0.08 \times K_{ow}} \quad (B3)$$

Where: K_{ow} = PCB octanol-water partition coefficient
 POC = particulate organic carbon concentrations in the water column
 DOC = dissolved organic carbon concentrations in the water column

The K_{ow} of different PCB congeners vary widely. Therefore, the %fd value was first calculated for each PCB homolog (Homolog %fd) using the midpoint of the homolog's K_{ow} range (Table B-2; MDE 2007b page D-10).

Table B-2: K_{ow} Values of PCB Homologs

Homolog	Midpoint K_{ow}
Mono+Di	47,315
Tri	266,073
Tetra	1,011,579
Penta	3,349,654
Hexa	5,370,318
Hepta	17,179,084
Octa	39,810,717
Nona	82,224,265
Deca	151,356,125

The tPCB freely dissolved fraction (tPCB %fd) for each water sample within fish species' home range was derived as described in Equation B4 and multiplied by the appropriate water column tPCB concentration. The geometric mean of all of the results within fish species' home range was then used in Equation B2 (in place of $[tPCB]_{water} \times \%fd$) to calculate the Baseline BAFs for each fish sample.

$$tPCB \%fd = \frac{\sum (\text{Homolog \%fd} \times \text{Homolog Concentration})}{[tPCB]_{water}} \quad (B4)$$

The freely dissolved tPCB, POC, and DOC concentrations for each water sample are listed in Table B-3.

Table B-3: Freely Dissolved tPCB, POC, and DOC Concentrations

Station	Sample Date	Freely-Dissolved tPCB (ng/L)	POC (kg/L) ¹	DOC (kg/L) ²
XHH4249	29-Nov-06	6.2E-02	1.3E-06	4.8E-06
XHH4249	06-Dec-06	1.4E-01	1.3E-06	4.8E-06
XHH4249	13-Dec-06	2.0E-01	1.3E-06	4.8E-06
XHH4818	29-Nov-06	2.4E+01	1.3E-06	4.8E-06
XHH4818	06-Dec-06	5.7E-02	1.3E-06	4.8E-06
XHH4818	13-Dec-06	2.8E-01	1.3E-06	4.8E-06
XHH4933	29-Nov-06	1.4E+00	1.3E-06	4.8E-06
XHH4933	06-Dec-06	6.3E-02	1.3E-06	4.8E-06
XHH4933	13-Dec-06	8.5E-02	1.3E-06	4.8E-06
XHH5305	06-Dec-06	4.3E-02	1.3E-06	4.8E-06
XHH5305	13-Dec-06	7.7E-02	1.3E-06	4.8E-06
COR0056	13-Dec-06	2.2E-01	1.3E-06	4.8E-06
COR0056	29-Nov-06	6.5E-02	1.3E-06	4.8E-06
COR0056	06-Dec-06	3.4E-01	1.3E-06	4.8E-06

Notes: ¹As POC data were not available for the Corsica River embayment, the averaged POC results from Northeast River, Bohemia River, and Sassafras River were used.

²All the DOC concentrations in Corsica River were averaged.

IV. Adjusted Total BAFs

Next, the Baseline BAFs was normalized by the species median lipid content and a median freely-dissolved water column tPCB concentration within species' home range, thus minimizing variability associated with the differences in fish lipid content or freely-dissolved water column tPCB concentrations:

$$\text{Adj-tBAF} = (\text{Baseline BAF} \times \text{Median \% Lipid} + 1) \times \text{Median \%fd} \quad (\text{B5})$$

Finally, the tPCB fish tissue listing threshold of 39 ng/g was divided by the site-specific Adj-tBAF calculated for each fish species (Table B-4). To be environmentally protective, the lowest value (i.e., 0.35 ng/L – white perch) was used as the site-specific tPCB water column TMDL endpoint protective of the “fishing” designated use in the Corsica River embayment.

Table B-4: Site-Specific Total BAF, Baseline BAF, Adj-tBAF, and Water Column Target, as well as Median %fd and Median Lipid Content for Each Fish Species

Species Name	Total BAF (L/kg)	Baseline BAF (L/kg)	Adj-tBAF (L/kg)	Water Column Target (ng/L)	Median %fd	Median Lipid Content
Channel Catfish	43,939	9,655,100	42,867	0.91	0.38	1.34%
White Perch	128,230	7,722,336	110,784	0.35	0.38	4.33%

V. BSAFs and Adj-SedBAFs

Similarly as in the case of the Baseline BAF calculation, the biota-sediment accumulation factors (BSAFs) for each fish sample (individual or composited) were derived using the following equation:

$$\text{BSAF} = \frac{\text{tPCB}_{\text{tissue}} \div \% \text{Lipid}}{\text{tPCB}_{\text{sediment}} \div \% \text{Organic Carbon}} \quad (\text{B6})$$

Where: [tPCB]_{fish} = fish tissue tPCB concentration (ng/kg – wet weight)
[tPCB]_{sediment} = geometric mean of sediment tPCB concentrations within fish species' home range (ng/L)
%lipid = fraction of fish tissue that is lipid
%Organic Carbon = sediment organic carbon fraction within fish species' home range.

As the %Organic Carbon data were not available for the Corsica River embayment, a default value of 1% was used (US EPA 2004).

For fish species with more than one result, a single BSAF was calculated as the median of the applicable total BSAFs. Each species' BSAF was then normalized with the use of the median lipid content (Table B-4) and the sediment organic carbon fraction:

$$\text{Adj-SedBAF} = \text{BSAF} \times \frac{\text{Median \% Lipid}}{\% \text{Organic Carbon}} \quad (\text{B7})$$

The tPCB fish tissue listing threshold of 39 ng/g was then divided by the Adj-SedBAF calculated for each species (Table B-5). To be environmentally protective, the lowest value (i.e., 8.7 ng/g – white perch) was used as the site-specific tPCB sediment TMDL endpoint protective of the “fishing” designated use in the Corsica River embayment.

Table B-5: Site-Specific BSAF, Adj-SedBAF, and Sediment Target for Each Fish Species

Species Name	BSAF	Adj-SedBAF	Sediment Target (ng/g)
Channel Catfish	1.30	1.74	22.4
White Perch	1.04	4.50	8.7

Appendix C. Tidal Prism Model

A description of the tidal prism model is presented in this appendix. Detailed information about tidal prism model and its applications can be found at Kuo et al. (1998) and Kuo et al. (2005). It is assumed that a single volume can represent a waterbody and that the pollutant is well mixed in the waterbody, as shown in Figure C-1.

The mass balance of water can be written as follows (Guo and Lordi, 2000):

$$\frac{dV}{dT} = Q_0(1 - \alpha) - Q_b + Q_f \quad (C1)$$

Where:

V is the volume of the bay (m³);

T is the dominant tidal period (hours);

Q_0 = quantity of water that enters the embayment through the open boundary (m³/d);

Q_b = quantity of water that leaves the embayment through the open boundary (m³/d);

Q_f = the volume of water that enters the embayment from the Bohemia River watershed;

α = return ratio, which is the percentage of water that flowed to the Lower Elk River during the previous ebb tide and flows back to the embayment during the following flood tide;

In a steady-state condition, the mass balance equations for the water can be written as follows:

$$Q_b = Q_0(1 - \alpha) + Q_f \quad (C2)$$

Knowing Q_0 , Q_f , and α , Q_b can be estimated (see Appendix D).

Assuming no decay, the polychlorinated biphenyls (PCBs) can enter the water column via loading from upstream and the atmosphere (L_f), loading from the Lower Elk River (Q_0C_0), resuspension from the sediment (V_rAC_2), and diffusion between sediment-water column interface ($V_dA(F_{d02}C_2 - F_{d01}C_1)$). PCBs leave the water column via volatilization ($V_vAF_{d01}C_1$), flow to the Lower Elk River (Q_bC_1) and sedimentation ($V_sAF_{p1}C_1$). In the sediment, the PCBs enter the system via settling ($V_sAF_{p1}C_1$) and leave the system via diffusion ($V_dA(F_{d02}C_2 - F_{d01}C_1)$), resuspension (V_rAC_2) and burial to a deeper layer (V_bAC_2). Specifically, the mass balance for the PCBs in the water column (Equation C3) and sediment (Equation C4) can be written as (Chapra, S.C. 1997):

$$\frac{dV_1C_1}{dt} = L_f - V_vAF_{d01}C_1 + (1 - \alpha)Q_0C_0 - Q_bC_1 + V_rAC_2 - V_sAF_{p1}C_1 + V_dA(F_{d02}C_2 - F_{d01}C_1) \quad (C3)$$

$$\frac{dV_2C_2}{dt} = -V_rAC_2 + V_sAF_{p1}C_1 - V_dA(F_{d02}C_2 - F_{d01}C_1) - V_bAC_2 \quad (C4)$$

Where:

L_f = tPCB loading from upstream (point and nonpoint sources) and atmosphere;

V_v = volatilization coefficient (m/d);

α = return ratio, which is the percentage of water that flowed to the Lower Elk River during the previous ebb tide and flows back to the embayment during the following flood tide;

A = area of the embayment (m²);

Q_0 = quantity of water that enters the embayment through the open boundary (m³/d);

Q_b = quantity of water that leaves the embayment through the open boundary (m³/d);

C_0 = tPCB concentrations in the water column of the Lower Elk River (ng/L);

C_1 = tPCB concentrations in the water column of the embayment (ng/L);

FINAL

C_2 = tPCB concentrations in the sediment of the embayment (ng/L);

V_1 = volume of the water column in the embayment (m^3);

V_2 = volume of the active sediment layer of the embayment (m^3);

V_d = diffusive mixing velocity;

F_{p1} = fraction of particular-associated PCBs in the water column;

F_{do1} = fraction of truly dissolved and dissolved organic carbon (DOC)-associated PCBs in the water column;

F_{do2} = fraction of truly dissolved and DOC-associated PCBs in the sediment;

V_r = rate of resuspension (m/d);

V_s = rate of settling (m/d);

V_b = rate of burial (m/d).

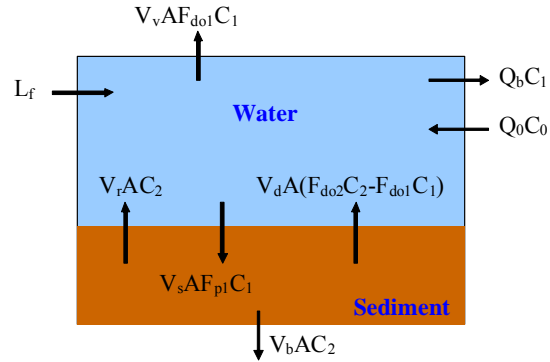


Figure C-1: The Schematic Diagram for the Tidal Prism Model and the tPCB Budget

Appendix D. Tidal Prism Model Calculation for Corsica River

For the Corsica River, the parameter values are as follows:

$L_f = 93,096$ ug/day. It was obtained by summing all the upstream point and nonpoint source loads and the load from atmosphere.

$V_v = 89.8$ m/year = 0.246 m/day. It was derived using the method of Chapra (1997) assuming a wind speed of 1 m/s and a temperature of 10°C.

$\alpha = 0.3$. In general, the exchange ratio varies from 0.3 to 0.7 (Kuo et al. 1998, Shen et al. 2002).

$A = 5,390,755$ m² estimated from GIS layer.

$Q_0 = A \times \text{Tidal range} \div \text{Tidal circle} \times 24 \text{ hrs} = 5,390,755 \times 0.488 \div 12.42 \times 24 = 5,083,456$ m³.

$Q_b = Q_f + Q_0 \times (1 - \alpha) = 107,747 + 5,083,456 \times (1 - 0.3) = 3,666,166$ m³.

Q_f is obtained by dividing the mean flow recorded at the closest U.S. Geological Survey gage station (Sallie Harris Creek, USGS 01492500) by its drainage area and multiplying by the drainage area of the Corsica River watershed.

$C_0 = 0.72 \times (0.935)^t$ ng/L. The measurement at station XHH5305 was used as the baseline boundary condition of the model. The TMDL methodology assumes that on average the tPCB concentrations at the Corsica River boundary are decreasing at a rate of 6.5% per year (also see Section 2.3.1 and Appendix I).

$C_1 = 1.12$ ng/L, measured and volume-averaged.

$C_2 = \text{Measured tPCB concentration on a dry sediment base} \times \text{Sediment density} \times (1 - \text{porosity}) \div \text{Fraction of particulate-associated tPCBs in the sediment} = 8.385 \times 2,500 \times (1 - 0.85) \div 0.9976 = 3,152$ ng/L; the porosity (water content on a volume base) of 0.85 is selected based on observations and reference (Thomann and Mueller 1987).

$V_1 = 11,675,645$ m³ estimated from GIS.

$V_2 = A \times \text{Active sediment layer thickness} = 5,390,755 \times 0.10 = 539,076$ m³. The Active sediment layer thickness value of 0.10 m is a default value and frequently used in water quality models.

$V_d = 69.35 \times \text{Porosity} \times (\text{Molecular weight of PCBs})^{-2/3} \div 365 = 69.35 \times 0.85 \times (305.6)^{-2/3} \div 365 = 0.00356$ m/d (Thomann and Mueller 1987).

$F_{pl} = 0.2414$; $F_{do} = 0.7586$; $F_{do2} = 0.00242$ (see Appendix F for derivation).

$V_s = 0.5$ m/d, a default value of settling rate normally used in literature (DRBC 2003).

$V_b = 3.082 \times 10^{-6}$ m/d (average of the measured sedimentation rates through ²¹⁰Pb technology).

V_r can be calculated via mass balance of the sediment in the active sediment layer at steady state:

$$\frac{d\rho(1-\varphi)}{dt} = V_s \times TSS - V_r \times \rho \times (1-\varphi) - V_b \times \rho \times (1-\varphi) = 0 \quad (\text{D1})$$

Where: TSS is the total suspended solid concentration (g/m³; measured)
 ρ is the sediment density (g/m³; Thomann and Mueller 1987)
 φ is the porosity.

Rearranging Equation D1:

$$V_r = \frac{V_s \times TSS}{\rho \times (1-\varphi)} - V_b = \frac{1 \times 11.65}{2500000 \times (1-0.85)} - 3.082 \times 10^{-6} = 1.25 \times 10^{-5} \text{ m/d} \quad (\text{D2})$$

The V_r value was then calibrated assuming the initial equilibrium has been reached in the water column and sediment.

FINAL

Substituting all the necessary parameters in equations (C3) and (C4) results in the changes of C_1 and C_2 through time.

Appendix E. Calculation of 95% CIs

The 95% Confidence Intervals (CIs) for the baseline mean total polychlorinated biphenyl (tPCB) concentration were calculated as follows:

$$\text{Upper 95\% CI} = \text{Mean} + \frac{t - \text{Value} \times \text{Standard Deviation}}{\sqrt{\text{Sample Size}}}$$

$$\text{Lower 95\% CI} = \text{Mean} - \frac{t - \text{Value} \times \text{Standard Deviation}}{\sqrt{\text{Sample Size}}}$$

Where: t-value is a tabulated value that can be found in a basic statistics textbook.

The model was run with the mean as well as the upper and lower 95% CIs set as the baseline conditions in the embayment and at the boundary. The results are presented in Figures E-1 and E-2. Time duration required to meet the site-specific tPCB water column TMDL endpoint and the corresponding sediment concentrations are listed in Table E-1. Time duration required to meet the water column TMDL endpoint in the embayment increased by approximately 27 percent (2.4 years) when the upper CI (vs. the mean) was used as the baseline tPCB water column concentration.

Table E-1: Values for the Mean and Its 95% CIs of tPCB Concentration

	Time (days) to Meet Water Column TMDL Endpoint	Sediment tPCB Concentration (ng/g) When Water Column TMDL Endpoint is Met
Mean	3,206	2.09
Upper 95% C.I.	4,147	2.15
Lower 95% C.I.	1,545	1.15

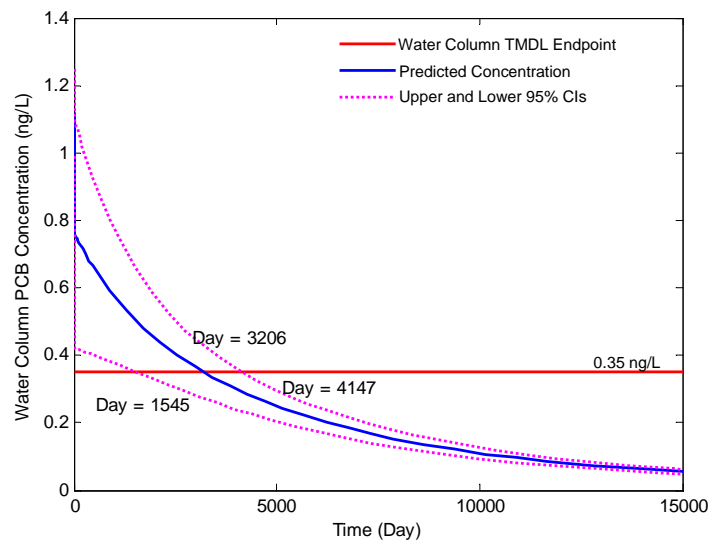


Figure E-1: Predicted Water Column tPCB Concentration in ng/L (Blue Line) and its 95% CIs (Magenta Lines)

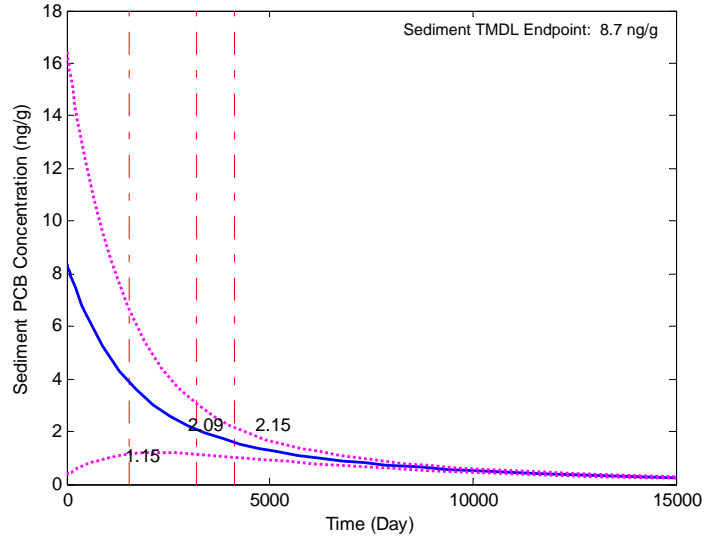


Figure E-2: Predicted Sediment tPCB Concentration in ng/g (Blue Line) and Its 95% CIs (Magenta Lines). The Red Vertical Lines Indicate the Times When the Water Column Endpoint was Met.

Appendix F. Calculation of Fraction of Different PCB Forms

The fractions in equations (C1) and (C2) can be calculated as follows:

$$F_{p1} = \frac{TSS \times 10^{-6} K_{oc} \times f_{oc1}}{1 + (K_{oc} \times 10^{-6})(TSS \times f_{oc1} + DOC_1)} \quad (F1)$$

$$F_{do1} = \frac{1 + (K_{oc} \times 10^{-6})DOC_1}{1 + (K_{oc} \times 10^{-6})(TSS \times f_{oc1} + DOC_1)} \quad (F2)$$

$$F_{do2} = \frac{\phi + \phi(K_{oc} \times 10^{-6})DOC_2}{\phi + (K_{oc} \times 10^{-6})(f_{oc2} \times \rho \times (1 - \phi) + \phi DOC_2)} \quad (F3)$$

Where:

K_{oc} is the organic carbon/water partition coefficient of PCBs (L/kg). It describes the ratio of a compound adsorbed to solids and in solution, normalized for organic carbon content. It can be calculated via the relationship of $\log_{10} K_{oc} = 0.00028 + 0.983 \times \log_{10} K_{ow}$ (Hoke et al. 1994), where K_{ow} is the octanol-water partition coefficient with $\log_{10} K_{ow}$ equals to 6.261 (de Bruijn et al. 1989).

f_{oc1} and f_{oc2} are the fractions of organic carbon in suspended solids in the water column and the sediment solids, respectively (US EPA 2004).

DOC_1 and DOC_2 are the dissolved organic carbon concentrations in water column and pore water, respectively.

ϕ is the porosity of the sediment.

Appendix G. Technical Approach Used to Generate Maximum Daily Load

Summary

This appendix documents the technical approach used to define the maximum daily load (MDL) of total polychlorinated biphenyls (tPCBs) consistent with the average annual Total Maximum Daily Load (TMDL), which is protective of the “fishing” designated use in the Corsica River embayment. The approach builds upon the modeling analysis that was conducted to determine the average annual tPCB TMDL and can be summarized as follows:

- The approach defines an MDL for each of the source categories;
- The approach builds upon the TMDL modeling analysis that was conducted to ensure that the average annual TMDL results in compliance with water quality standards;

The approach considers a daily load level of a resolution based on the specific data that exists for each source category.

Introduction

This appendix documents the development and application of the approach used to present the average annual tPCB TMDL allocations in terms of daily loads. It is divided into sections discussing:

- Basis for approach;
- Options considered;
- Selected approach;
- Results of approach.

Basis for Approach

The overall approach for the development of daily loads was based upon the following factors:

- **Average Annual TMDL:** The basis of the average annual tPCB TMDL is that the Baseline Load to the Corsica River embayment results in fish tissue concentrations that exceed the tPCB fish tissue listing threshold. Thus, the average annual tPCB TMDL was calculated to be protective of the “fishing” designated use.
- **Draft U.S. Environmental Protection Agency (US EPA) guidance document entitled *Options for the Expression of Daily Loads in TMDLs* (US EPA 2007b).**

The rationale for developing TMDL expressed as daily loads was to accept the existing average annual TMDL, but then develop a method for converting this number to an MDL – in a manner consistent with US EPA guidance and available information.

Options Considered

The draft US EPA guidance document for developing daily loads does not specify a single approach that must be adhered to, but rather it contains a range of acceptable options (US EPA 2007b). The selection of a specific method for translating a time-series of allowable loads into the expression of an MDL requires decisions regarding both the level of resolution (e.g., single daily load for all conditions vs. loads that vary with environmental conditions) and level of probability associated with the exceedance of the TMDL.

This section describes the options that were considered when developing methods to calculate Corsica River embayment MDL.

Level of Resolution

The level of resolution pertains to the amount of detail used in specifying the MDL. The draft US EPA guidance on daily loads provides three categories of options for level of resolution, all of which are potentially applicable to the Corsica River:

1. **Representative daily load:** In this option, a single daily load (or multiple representative daily loads) is specified that covers all time periods and environmental conditions.
2. **Flow-variable daily load:** This option allows the MDL to vary based upon the observed flow conditions.
3. **Temporally-variable daily load:** This option allows the MDL to vary based upon seasons or times of varying source or water body behavior (US EPA 2007b).

Probability Level

All TMDLs have some probability of being exceeded, with the specific probability being explicitly specified or implicitly assumed. This level of probability directly or indirectly reflects two separate phenomena:

1. Water quality criteria consist of components describing acceptable magnitude, duration, and frequency. The frequency component addresses how often conditions can allowably surpass the combined magnitude and duration components.
2. Pollutant loads, especially from wet weather sources, typically exhibit a large degree of variability over time. It is rarely practical to specify a “never to be exceeded value” for a daily load, as essentially any loading value has some finite probability of being exceeded.

The draft daily load guidance document states that the probability component of the MDL should be “based on a representative statistical measure” that is dependent upon the specific TMDL and best professional judgment of the developers (US EPA 2007b). This statistical measure represents how often the MDL is expected/allowed to be exceeded. The primary options for selecting this level of protection would be:

1. **The MDL reflects some central tendency:** In this option, the MDL is based upon the mean or median value of the range of loads expected to occur. The variability in the actual loads is not addressed.

2. **The MDL reflects a level of protection implicitly provided by the selection of some “critical” period:** In this option, the MDL is based upon the allowable load that is predicted to occur during some critical period examined during the analysis. The developer does not explicitly specify the probability of occurrence.
3. **The MDL is a value that will be exceeded with a pre-defined probability:** In this option, a “reasonable” upper bound percentile is selected for the MDL based upon a characterization of the variability of daily loads. For example, selection of the 95th percentile value would result in an MDL that would be exceeded 5% of the time.

Selected Approach

The level of resolution selected for the Corsica River embayment MDL was a representative daily load, expressed as a single daily load for each loading source. This approach was chosen due to the nature of PCBs and the focus of this study on a TMDL endpoint that is protective of the “fishing” designated use. Daily flow and temporal variability do not affect the rate of PCB bioaccumulation in fish over the long-term thus establishing no influence on achievement of the TMDL endpoint. An MDL at these levels of resolution is unwarranted.

The approach selected for defining a Corsica River embayment MDL was based upon the specific data that exists for each source category. The approach consists of unique methods for each of the following categories of sources:

- Approach for Nonpoint Sources and
- Approach for National Pollutant Discharge Elimination System (NPDES) permitted waste water treatment plant (WWTP) Point Sources within the Corsica River.

Approach for Nonpoint Sources within the Corsica River

The Nonpoint Source MDL was estimated based on three factors: a specified probability level, the average annual tPCB TMDL allocation, and the coefficient of variation (CV) of the baseline condition for ambient water column concentrations in the Corsica River. The probability level (or exceedance frequency) is based upon guidance from US EPA (1991) where examples suggest that when converting from a average to a daily value, the z-score corresponding to the 99th percentile of the log-normal probability distribution should be used.

The CV of 0.71 was calculated using the arithmetic mean and standard deviation of the baseline ambient water column concentrations in the Corsica River (see Equation G1).

$$CV = \frac{\beta}{\alpha} \quad (G1)$$

Where:

CV = coefficient of variation

α = mean (arithmetic)

β = standard deviation (arithmetic).

The MDL for each contributing source is estimated as the appropriate average annual load allocation multiplied by a conversion factor that accounts for expected variability of daily loading values. The equation is as follows:

$$MDL = LTA * e^{(z\sigma - 0.5\sigma^2)} \quad (G2)$$

Where:

MDL = Maximum daily load

LTA = Long-term average (average annual load allocation)

Z = z-score associated with target probability level

$\sigma = \ln(CV^2 + 1)$

CV = Coefficient of variation based on arithmetic mean and standard deviation.

Using a z-score associated with the 99th percent probability (z value of 2.326), a CV of 0.71, and an appropriate unit conversion (i.e., from long-term average load (g/yr) to an MDL (g/day)) results in a conversion factor of 0.0099.

Approach for WWTP Point Sources within the Corsica River Watershed

The TMDL also considers contributions from NPDES permitted WWTP point sources that discharge quantifiable concentrations of tPCBs in the Corsica River watershed. The MDL was calculated based on the guidance provided in the Technical Support Document (TSD) for Water Quality-based Toxics Control (US EPA 1991). The average annual TMDL allocation was converted to maximum daily limits using Table 5-2 of the TSD assuming a coefficient of variation of 0.6, a 99th percentile probability (z value of 2.326), and an appropriate unit conversion (i.e., from long-term average load (g/yr) to an MDL (g/day)). This results in a conversion factor of 0.0085. It should be noted, however, that the WWTP Baseline Load was considered to be *de minimis*, therefore no appreciable environmental benefit would be gained by reducing this load (see Appendix J for details).

Results of Approach

This section lists the results of the selected approaches to define the Corsica River embayment MDL.

- Calculation Approach for Nonpoint Sources (Lower Chester River Influence, Bottom Sediment, Direct Atmospheric Deposition, Watershed Nonpoint Sources):

$$\text{Nonpoint Source MDL (g/day)} = \text{Average Annual Nonpoint Source LA (g/yr)} \times 0.0099$$

- Calculation Approach for WWTP Point Sources within the Corsica River:

$$\text{WWTP MDL (g/day)}^{\Delta} = \text{Average Annual WWTP WLA (g/yr)} \times 0.0085$$

Table G-1: Summary of tPCB Maximum Daily Load

Source	MDL (g/day)
Lower Chester River Influence	5.123
Bottom Sediment (Resuspension and Diffusion)	1.260
Direct Atmospheric Deposition (to the Surface of the Embayment)	0.176
Watershed Nonpoint Sources	0.147
<i>Total Nonpoint Sources</i>	<i>6.706</i>
WWTP [△]	0.011
<i>Total Point Sources</i>	<i>0.011</i>
<i>MOS</i>	<i>0.746</i>
Total	7.463

Note: [△] WWTP Baseline Load was considered to be *de minimis*.

Appendix H. Derivation of the Boundary tPCB Concentration

Corsica River exchanges waters with the Chesapeake Bay via the Chester River. The Susquehanna River is the major source of flow and polychlorinated biphenyls (PCBs) to the Upper Chesapeake Bay (Ko and Baker 2004) including Chester and Corsica rivers. According to Ko and Baker (2004), the tPCB loads of Susquehanna River from 1992 to 1998 are as follows:

Table I-1: The Flow Normalized tPCB loads of Susquehanna River (kg/m³/year)

Year	Years Since 1992	Load (kg/m ³ /year)	Log (Load _{Current} /Load ₁₉₉₂)
1992	0	37	0
1993	1	37	0
1994	2	35	-0.02413
1995	3	35	-0.02413
1997	5	24	-0.18799
1998	6	24	-0.18799

A linear regression was developed for *Years Since 1992* vs. *Log (Load_{Current}/Load₁₉₉₂)*, the slope of -0.0292 stands for log of current year's load as a percentage of the previous year's load. The current year's load as a percentage of the previous year's load is $10^{-0.0292} = 0.935$. Thus, on average the tPCB concentrations in the Upper Chesapeake Bay are decreasing at a rate of $1 - 0.935 = 6.5\%$ per year (Figure I-1). This value was used in the model simulation to account for the expected temporal changes in tPCB concentration at the Corsica River boundary.

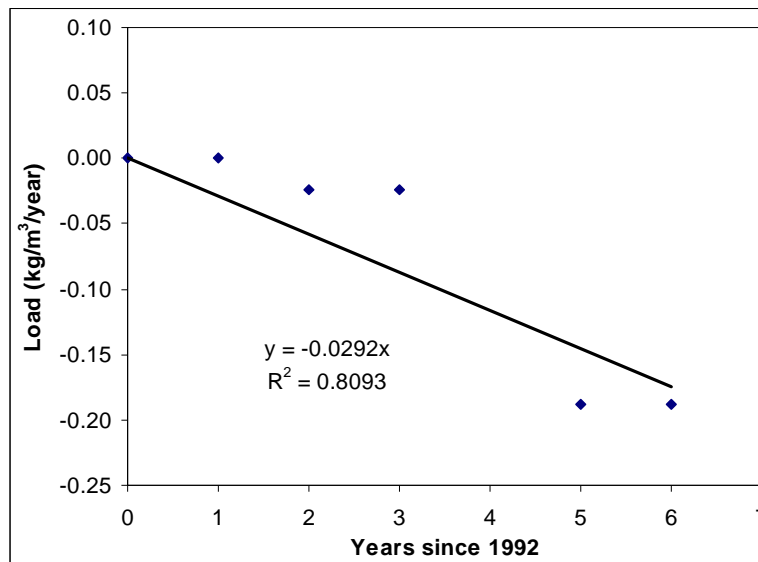


Figure I-1: The Regression Line of the Ko and Baker tPCB Loading Data

Appendix I. List of Analyzed PCB Congeners

Polychlorinated biphenyl (PCB) analytical services were provided by the University of Maryland Center for Environmental Science (UMCES). PCB congeners were identified and quantified by high resolution gas chromatography with electron capture detection. UMCES uses a slightly modified version of the PCB congener specific method described in Ashley and Baker (1999), in which the identities and concentrations of each congener in a mixed Aroclor standard (25:18:18 mixture of Aroclors 1232, 1248, and 1262) are determined based on their chromatographic retention times relative to the internal standards (PCB 30 and PCB 204). Based on this method, 86 chromatographic peaks can be quantified (see Table J-1). Some of the peaks contain one PCB congener, while many are comprised of two or more co-eluting congeners. The PCB analysis presented in this document is based on total PCB concentrations that are calculated as the sum of the detected PCB congeners/congener groups representing the most common congeners that were historically used in the Aroclor commercial mixtures.

Table I-1: List of Analyzed PCB Congeners

1	45	110, 77	177
3	46	114	180
4, 10	47, 48	118	183
6	49	119	185
7, 9	51	123, 149	187, 182
8, 5	52	128	189
12, 13	56, 60	129, 178	191
16, 32	63	132, 153, 105	193
17	66, 95	134	194
18	70, 76	135, 144	197
19	74	136	198
22	81, 87	137, 130	199
24	82, 151	141	201
25	83	146	202, 171, 156
26	84, 92	157, 200	203, 196
29	89	158	205
31, 28	91	163, 138	206
33, 21, 53	97	167	207
37, 42	99	170, 190	208, 195
40	100	172	209
41, 64, 71	101	174	
44	107	176	

Appendix J. WWTP Load Evaluation

This appendix evaluates the significance of the Waste Water Treatment Plant (WWTP) Total Polychlorinated Biphenyl (tPCB) Baseline Load and whether a reduction is necessary in order to meet the TMDL resulting in the attainment of water quality standards. Assigning reductions to loads that are considered *de minimis* (i.e., insignificant or negligible) would produce no appreciable environmental benefit and would require regulated facilities to implement burdensome regulatory requirements.

At 0.2% of the TMDL (Table J-1), the Corsica River WWTP Baseline Load is considered *de minimis* because even its complete elimination would not result in any discernible improvement in water quality (Table J-2). Moreover, a possible future increase in this load (e.g., due to potential future development or expansion of plant capacity) is also not expected to have any significant impact on meeting the site-specific tPCB water quality TMDL endpoints; even a 10-fold increase in WWTP tPCB load (up to 2% of the TMDL) is expected to increase the time it takes to reach the TMDL endpoints by only 3% or 95 days (Table J-3, Figure J-1, and J-2). Therefore, given that even a possible future increase in this load would not have any impact on meeting TMDL endpoints, no appreciable environmental benefit would be gained by reducing this load.

Table J-1: WWTP tPCB Load as Percent of TMDL

Sources	Allowable Load (g/year)	Percent of TMDL
WWTP	1.28	0.2%
Other	754.72	99.8%
Total	756	100%

Table J-2. Effect of Eliminating WWTP Baseline Load on Time Needed to Reach the TMDL Endpoints

Allowable Load	Nr. of Days Needed to Reach the TMDL Endpoints
Including WWTP Baseline Load	3,206
Reducing WWTP Baseline Load by 100%	3,195

Loadings from the Lower Chester River (conveying tPCB loads from the Upper Chesapeake Bay) as well as resuspension and diffusion from the bottom sediments are the primary source of the tPCB loads resulting in the PCB impairment in the Corsica River embayment (see Section 2.3). Attainment of the site-specific tPCB water quality TMDL endpoints will only be possible with the decline of these primary loadings, which is expected to take place over time as the Chesapeake Bay concentrations continue to decline resulting also in natural attenuation of tPCB

levels in the legacy sediments. In the future, if the WWTP is discovered to discharge PCBs at levels that threaten water quality, the assessment of the appropriate WLA will be revisited.

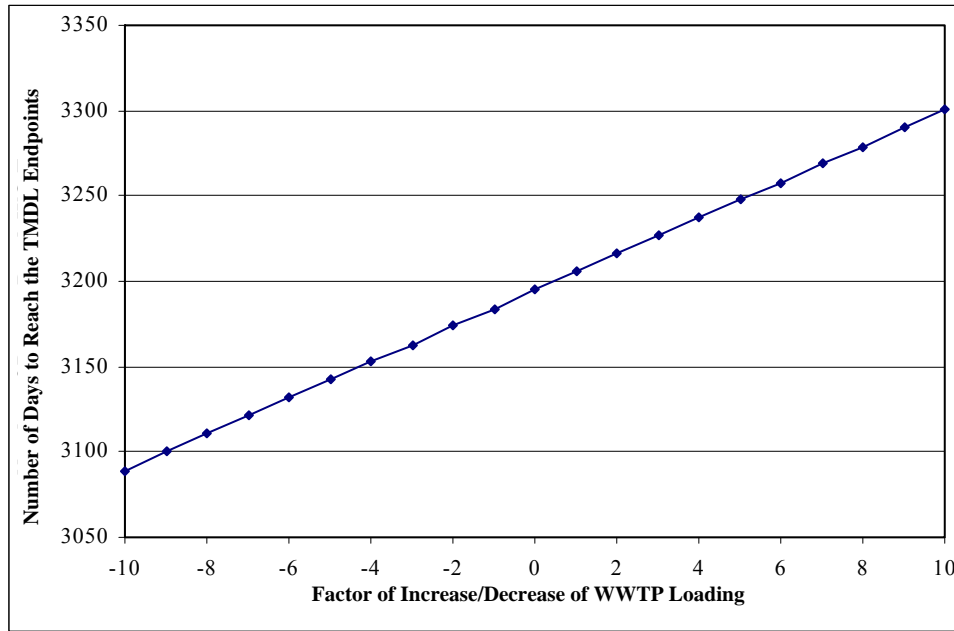


Figure J-1: Effect of Increasing/Decreasing Loads as Factor of WWTP Baseline Loads on Time Needed to Reach the TMDL Endpoints (days)

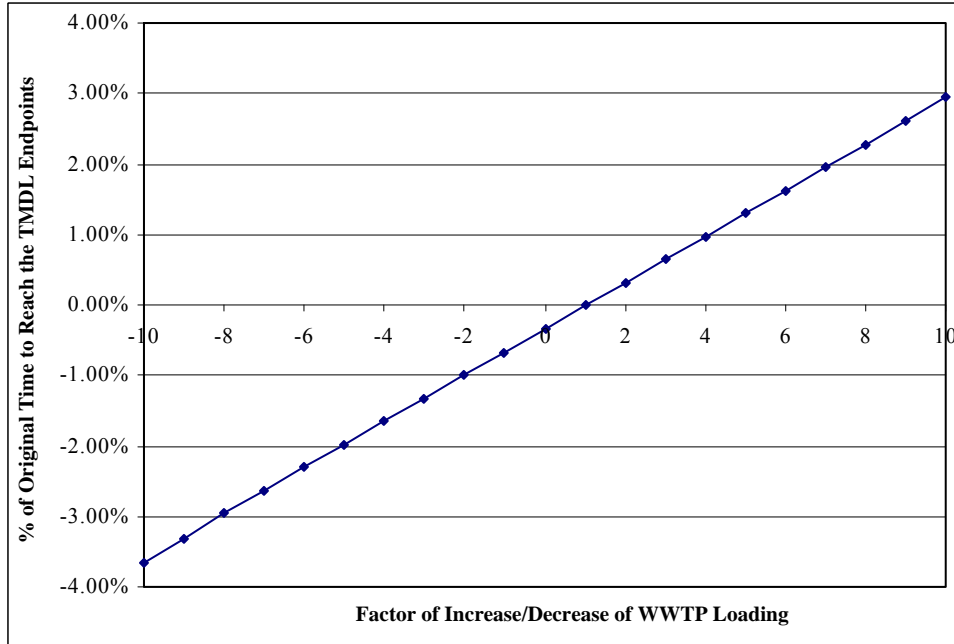


Figure J-2: Effect of Increasing/Decreasing Loads as Factor of WWTP Baseline Loads on Time Needed to Reach the TMDL Endpoints (% of time)

**Table J-3: Effect of Increasing/Decreasing Loads as Factor of WWTP
Baseline Loads on Time Needed to Reach the TMDL Endpoints**

Factor of Increase/ Decrease of WWTP Loading	Nr. of Days Needed to Reach the TMDL Endpoints	Percent Change
10	3301	2.96%
9	3290	2.62%
8	3279	2.28%
7	3269	1.97%
6	3258	1.62%
5	3248	1.31%
4	3237	0.97%
3	3227	0.66%
2	3216	0.31%
1	3206	0.00%
-2	3174	-1.00%
-3	3163	-1.34%
-4	3153	-1.65%
-5	3142	-2.00%
-6	3132	-2.31%
-7	3121	-2.65%
-8	3111	-2.96%
-9	3100	-3.31%
-10	3089	-3.65%