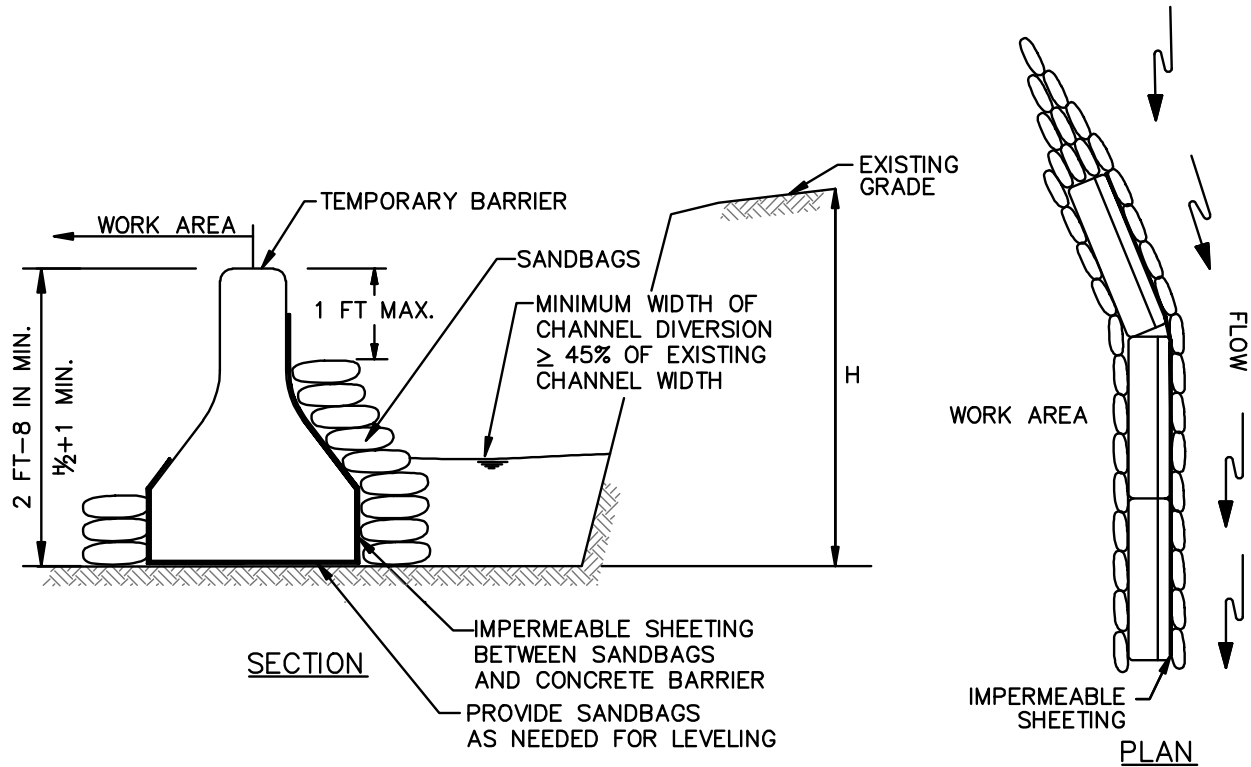


# DETAIL C-7 TEMPORARY BARRIER DIVERSION

STANDARD SYMBOL

TBD



## CONSTRUCTION SPECIFICATIONS

1. FOR SANDBAGS USE MATERIALS THAT ARE RESISTANT TO ULTRA-VIOLET RADIATION, TEARING, AND PUNCTURE AND WOVEN TIGHTLY ENOUGH TO PREVENT LEAKAGE OF FILL MATERIAL.
2. USE BARRIER MADE OF CONCRETE OR OTHER APPROVED MATERIAL.
3. USE 10 MIL OR THICKER, UV RESISTANT, IMPERMEABLE SHEETING OR OTHER APPROVED MATERIAL THAT IS IMPERMEABLE AND RESISTANT TO PUNCTURING AND TEARING.
4. ESTABLISH TOP ELEVATION AT  $H/2 + 1$  FOOT FOR PROJECTS OF DURATION LESS THAN 2 WEEKS OR AS SPECIFIED ON APPROVED PLAN.
5. INSTALL DIVERSION STRUCTURE FROM UPGRADE TO DOWNGRADE.
6. PLACE IMPERMEABLE SHEETING SUCH THAT UPGRADE PORTION OVERLAPS DOWNGRADE PORTION BY A MINIMUM OF 18 INCHES.
7. USE SANDBAG BASE FOR LEVELING AND TO ESTABLISH MINIMUM TOP ELEVATION OF THE BARRIER AS REQUIRED.
8. DISPOSE OF ALL EXCAVATED MATERIALS IN AN APPROVED DISPOSAL AREA OUTSIDE OF THE 100-YEAR FLOODPLAIN.
9. DEWATER WORK AREA USING AN APPROVED EROSION AND SEDIMENT CONTROL PRACTICE AS SPECIFIED ON APPROVED PLAN.
10. KEEP ABUTMENTS BETWEEN CONCRETE BARRIERS WATER TIGHT. REPLACE SANDBAGS AND IMPERMEABLE SHEETING IF TORN.

MARYLAND STANDARDS AND SPECIFICATIONS FOR SOIL EROSION AND SEDIMENT CONTROL