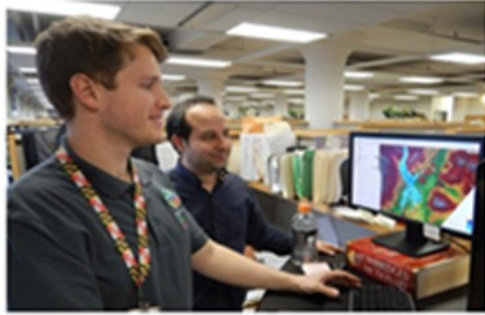




What's in Your Pond?

What You See is What You Get!

All photos source: MDE



What's in Your Pond?



What You See is What You Get!

Housekeeping

- The Chat function will be used throughout today's session
- Registration - sign in using the Roll Call link in Chat
- If you get bumped, lose connectivity, or your screen freezes, leave and reenter the session
- The College of Southern Maryland is providing CEUs/PDHs for all three sessions.
 - A link to your certificate will be available at the end of each session. You have to be both registered and here for the entire program to get CEUs





What's in Your Pond?

What You See is What You Get!

A stormwater training program delivered by the
Maryland Department of the Environment
and funded in part by the
Chesapeake Bay Regulatory and Accountability Program





What's in Your Pond?

What You See is What You Get!

Agenda

9:00 – 9:30 a.m.

Welcome and Opening Remarks

Jennifer M. Smith, P.E., Sediment, Stormwater, and Dam Safety Program

Presentation One | 09:35 – 10:00 a.m.

Review It - How to review it so it can be built properly

John Roche, P.E., Dam Safety Permits Division

Presentation Two | 10:05 – 11:00 a.m.

Build It -How to build it right the first time

Charlie Wallis, P.E., Dam Safety Permits Division

Presentation Three | 11:05 – 11:35 a.m.

Inspect It -How to make sure that it continues to work safely

Pat Depkin, Stormwater Program Review Division

Presentation Four | 11:40 – 12:00 p.m.

Road Map Forward

Raymond Bahr, MDE Sediment, Stormwater, and Dam Safety





What's in Your Pond?



What You See is What You Get!

- We have scheduled 20-40 minutes for each session including time for Q&A.
- Questions should be placed in CHAT.
 - For those questions we may not have time to respond to, or should you 'stump' us with a question, we will be creating an FAQ which will be emailed to each registered attendee.
- There will be a 5 minute break between sessions.



What You See is What You Get! (WYSIWYG)

What's in Your Pond?



WYSIWYG Fun Facts:

- In 1974, the world's first WYSIWYG document preparation program, Bravo, became operational.
- Microsoft hired the creator of Bravo to develop Microsoft Multi-Tool Word released in 1981.
- Microsoft Word first launched in 1983
- Interesting codenames for early versions of Microsoft Word include:

Bill The Cat (for Word 1.1) and

Spaceman Spiff (Word 2.0).

Spaceman Stew?





Small Pond Plan Review Issues

- Hazard creep
- Woody vegetation
- Forest conservation easements
- Access and maintenance issues
- Adjacent Property Impacts
- HOAs/ownership



We have some questions for you...

- How is your plan approval/permit agency structured?
- Does your agency structure allow for coordination across disciplines?
- How do you interact with other planning and permitting agencies in your jurisdiction?



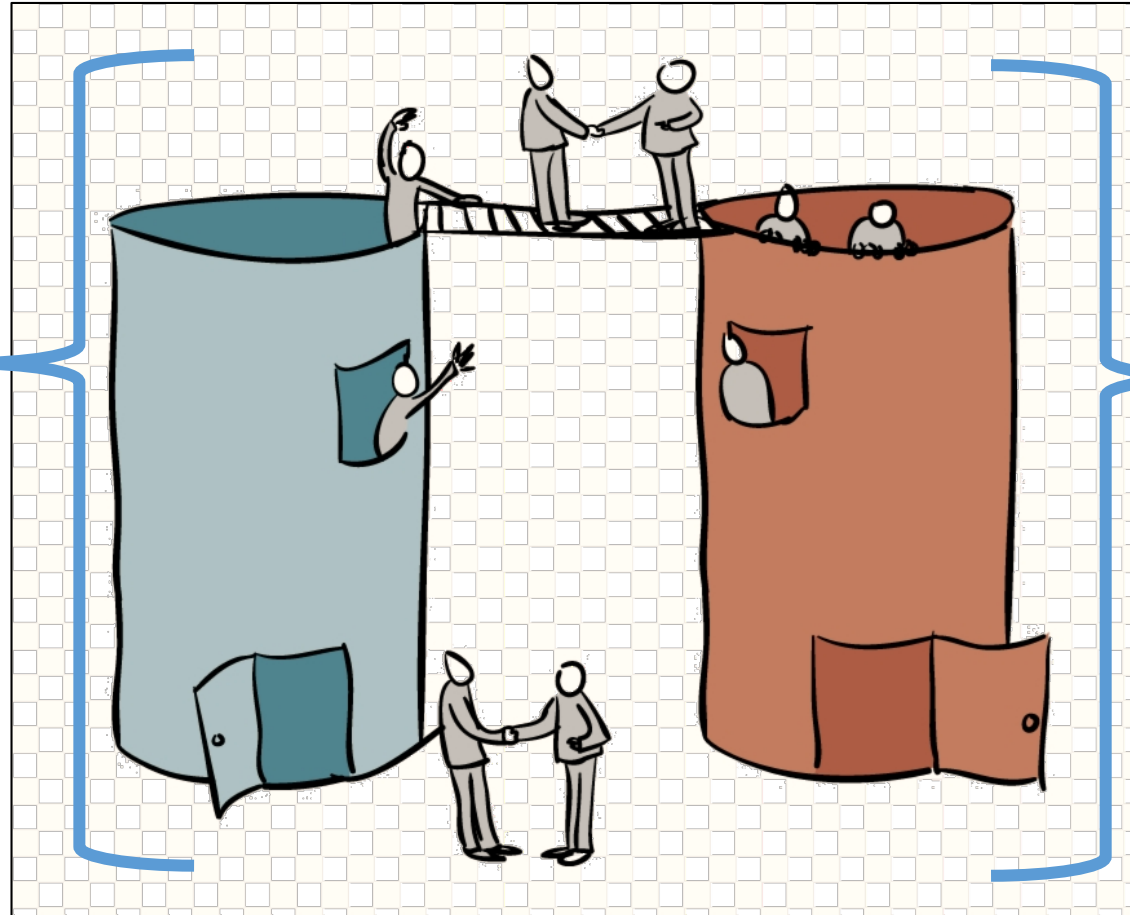
photo source: MDE



Get out of your isolated silos.....

The Engineering Division

- SWM Concept Plan
- SWM Final Plan
- Road Plans
- Utility Plans
- Small Pond Approval
- E&SC Plan



The Planning Division

- Preliminary Plan
- Subdivision Plat
- Forest Conservation Plan and Easements
- Site Plan
- HOA Documents





Hazard Creep

What's in Your Pond?

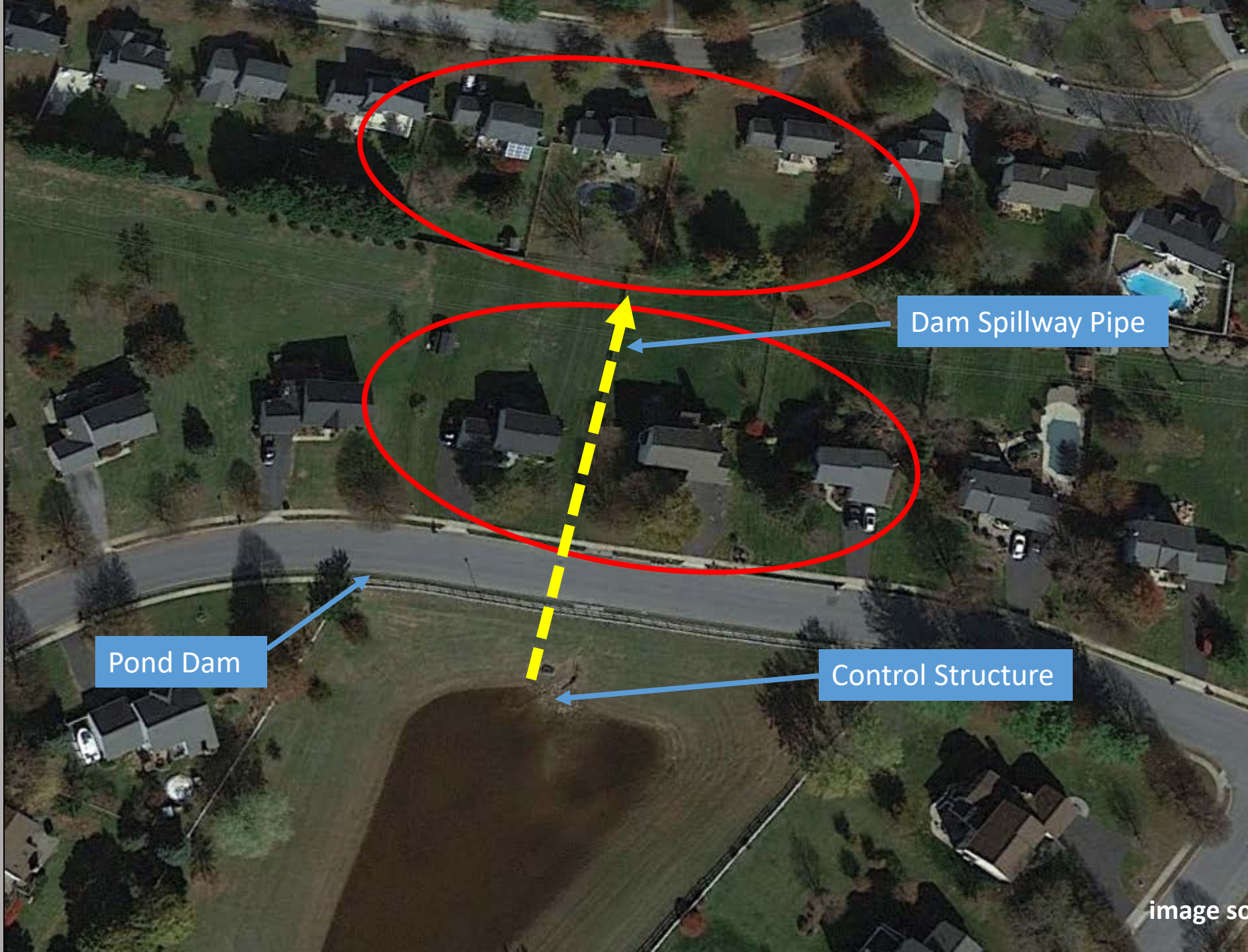




Pond Dam

Control Structure

photo source: MDE

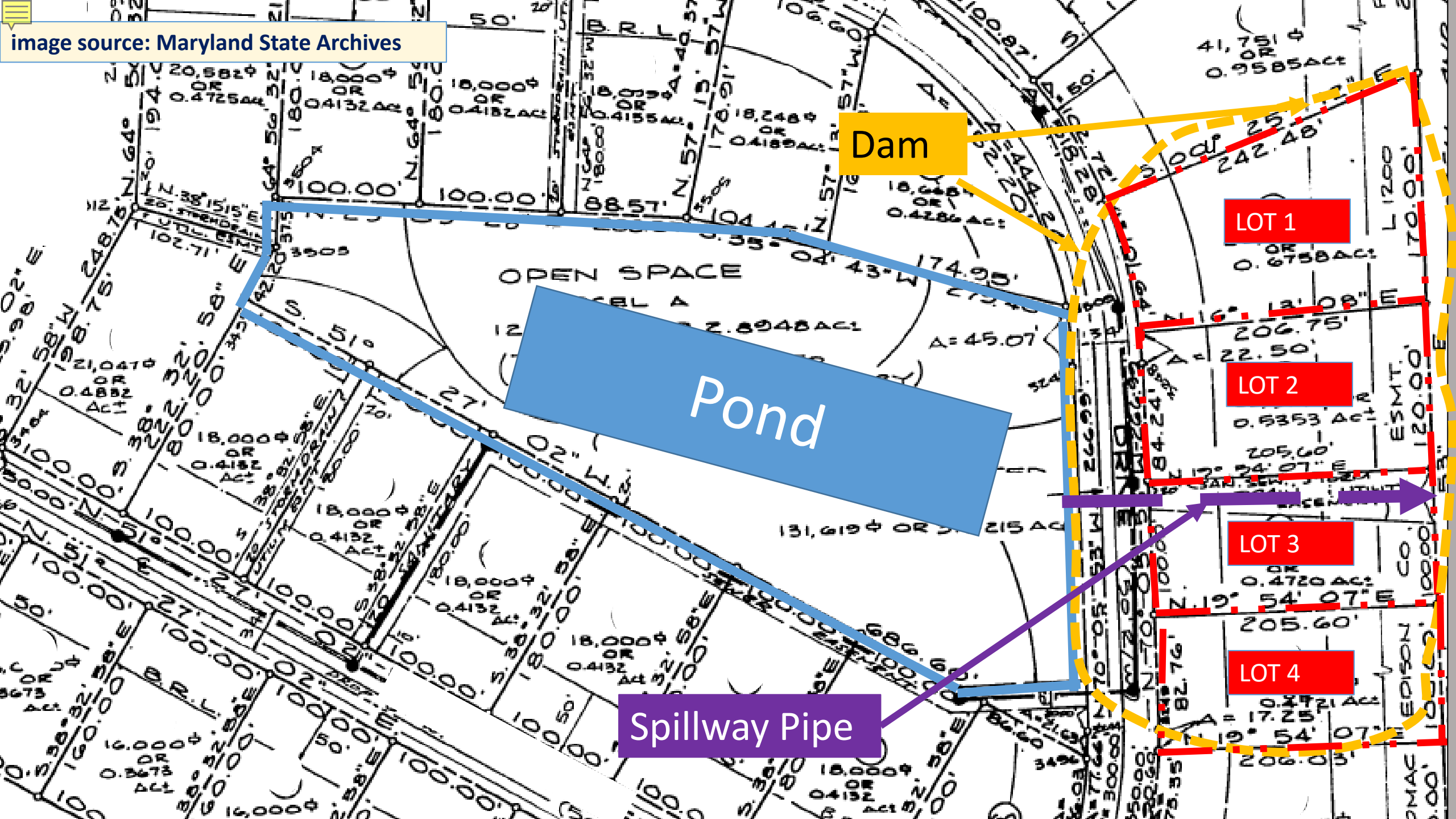


Pond Dam

Dam Spillway Pipe

Control Structure

image source: Maryland State Archives



Dam

LOT 1

LOT 2

LOT 3

LOT 4

Pond

Spillway Pipe



Maintenance Access

What's in Your Pond?

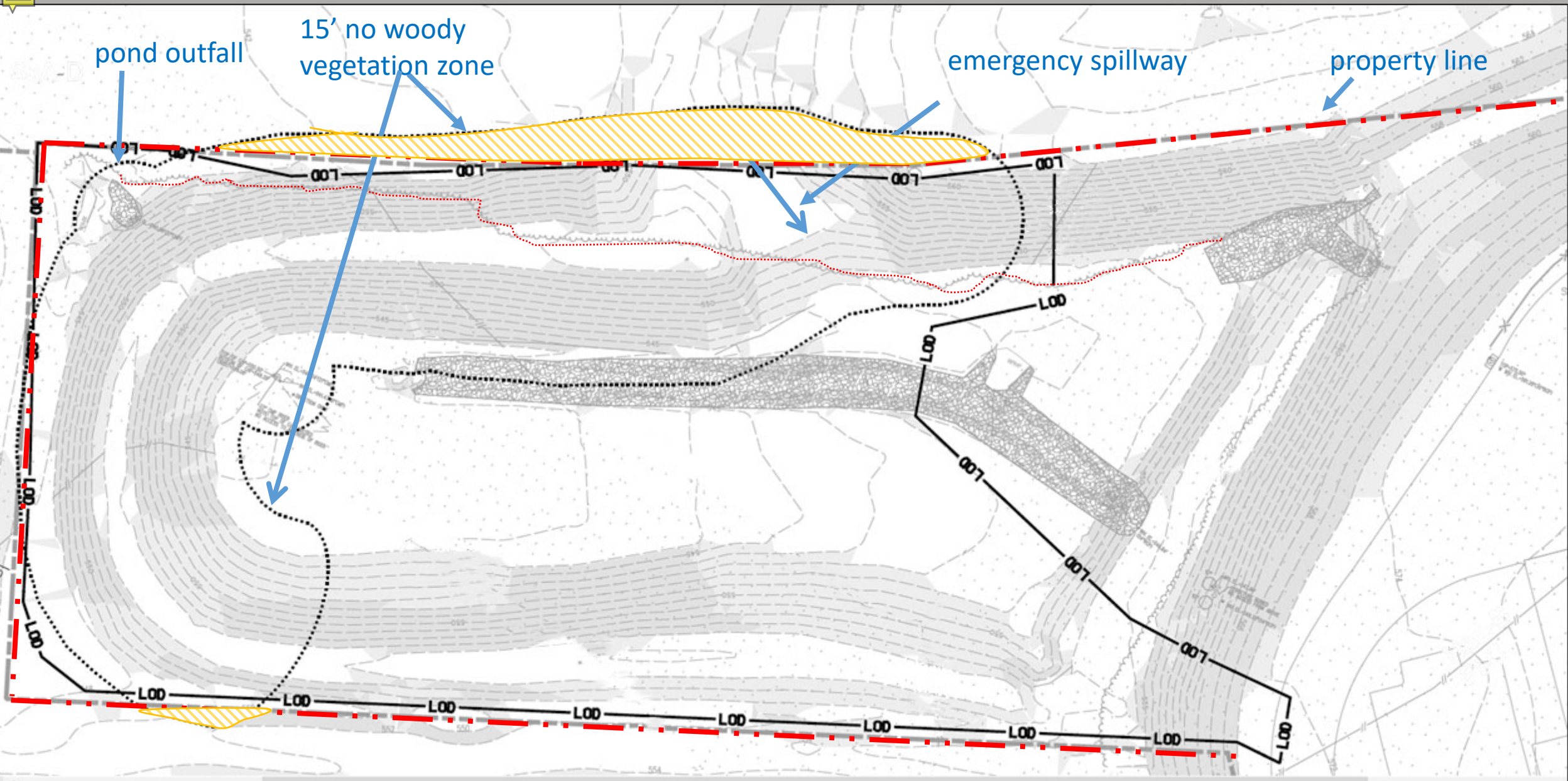


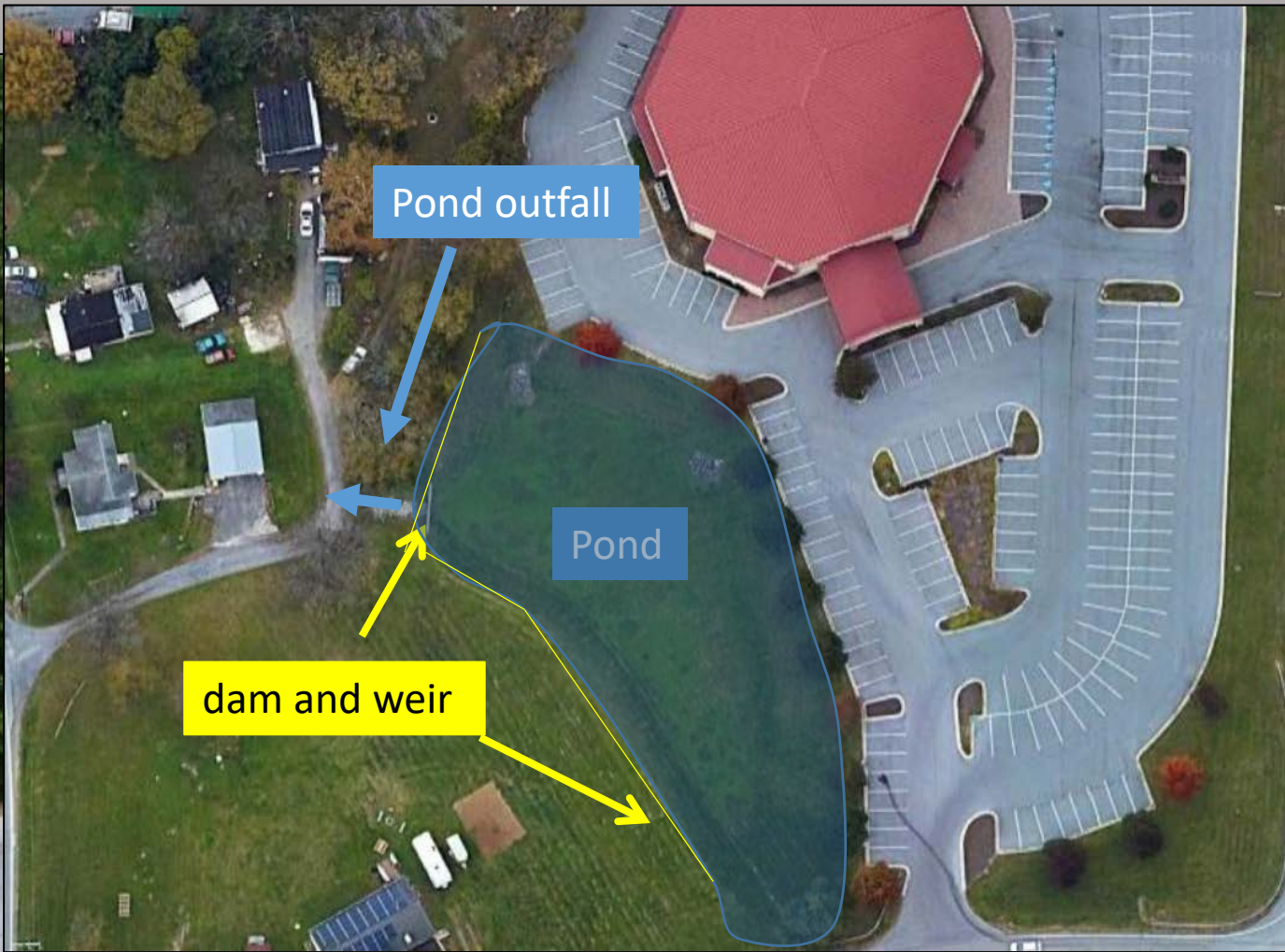
pond outfall

15' no woody vegetation zone

emergency spillway

property line





right image source: Google Earth

left image source: MDE staff photo





Offsite Property Impacts

What's in Your Pond?



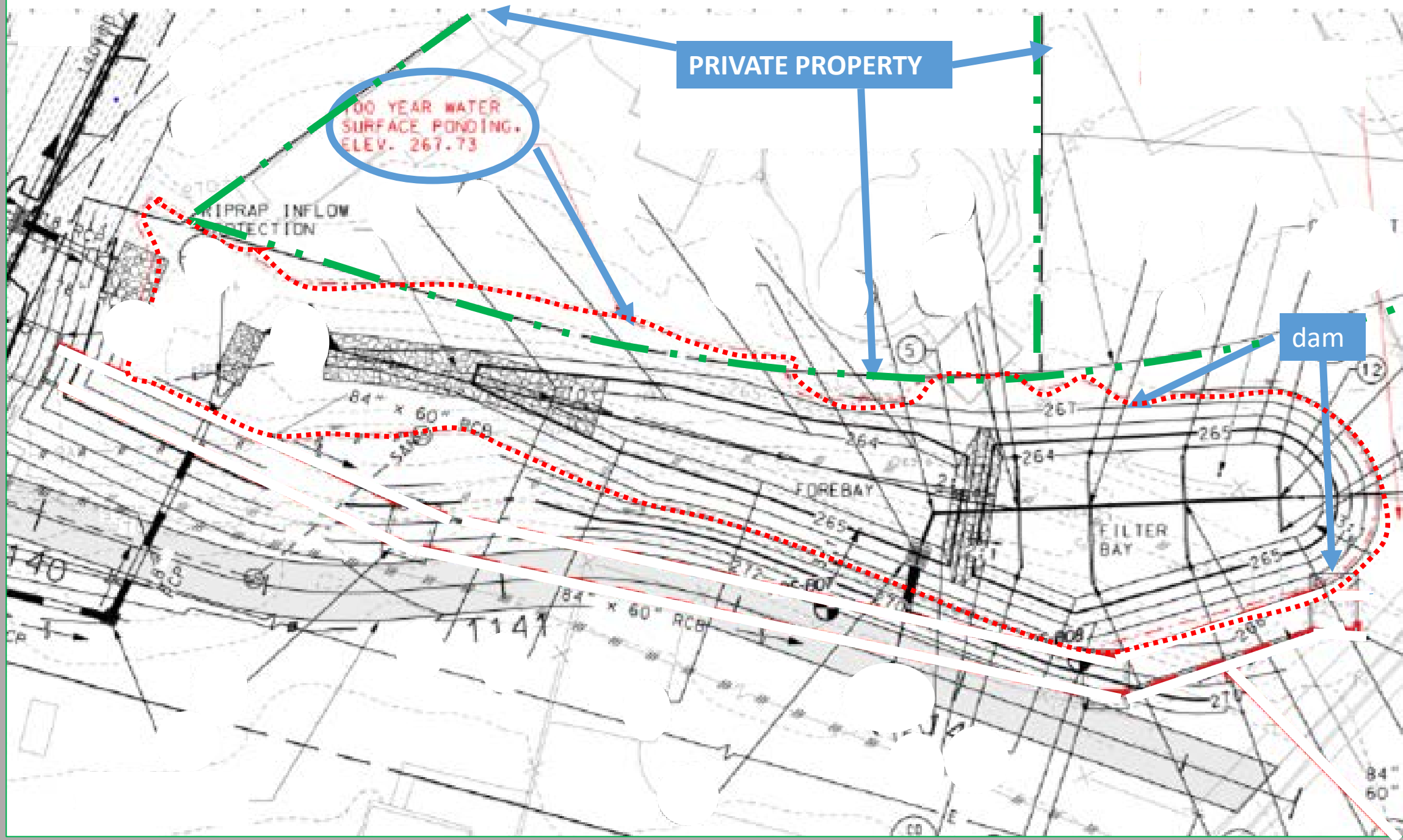


Stormwater Regulation 26.17.02.09. D:

“If a stormwater management plan involves direction of some or all runoff off of the site, it is the responsibility of the developer to obtain from adjacent property owners any easements or other necessary property interests concerning flowage of water.”

***How do you as a plan approver ensure downstream and upstream property owners have authorized these impacts?
Does your jurisdiction have local policies such as downstream drainage easement requirements?***







Sediment Basin



All photos source: Tom and Beth Weber



Existing “Farm” Ponds

What’s in Your Pond?





Non-Tidal Wetlands Regulations COMAR 26.23.01.01.35

"Farm pond" means a predominantly open water body used primarily to support agricultural activities, including livestock watering, irrigation, sediment control, fire protection, or aquaculture. Predominantly open water bodies on areas with a land use other than agriculture or that are not used primarily for agricultural activities are not considered farm ponds.



photo source: MDE staff photo

When is a farm pond no longer a farm pond?

Existing dam and "farm" pond



photo source: Google Earth

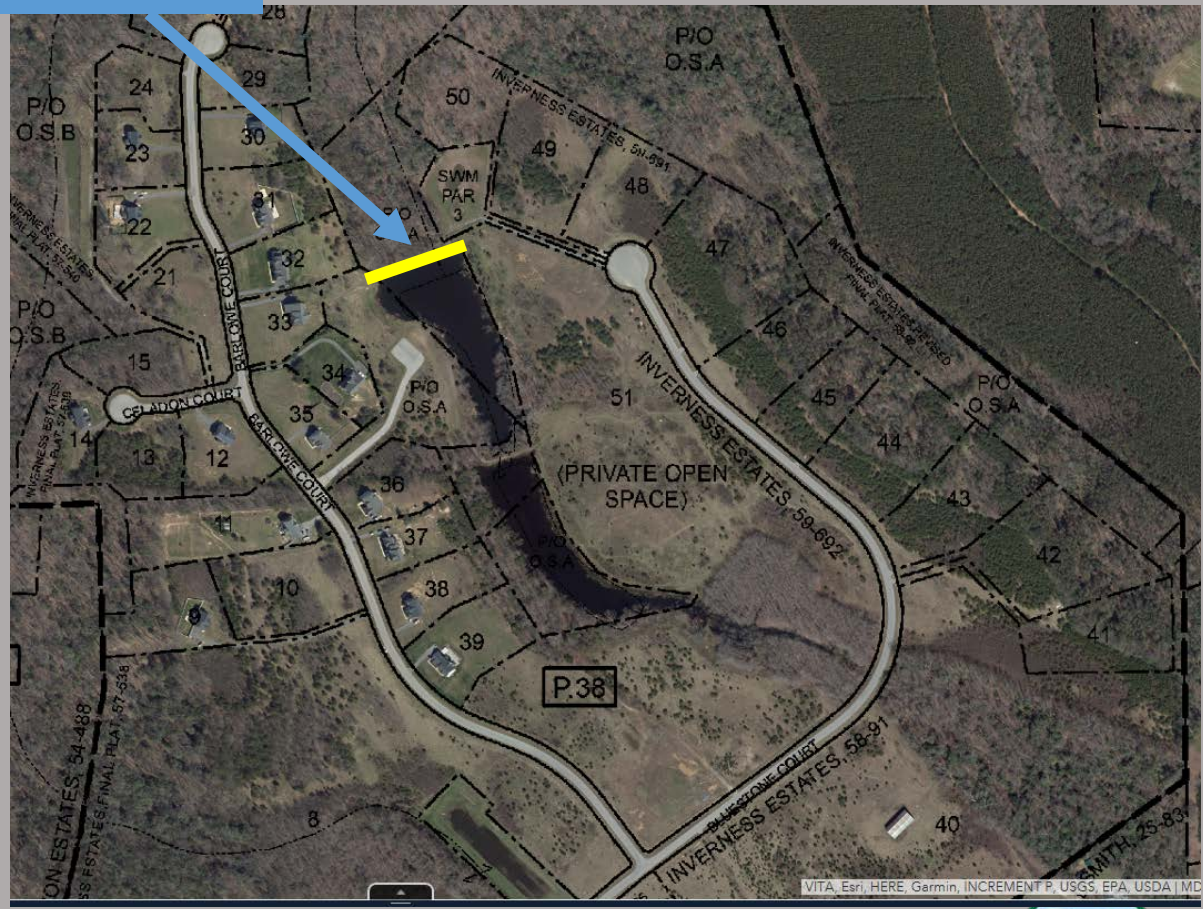


photo source: MD iMAP





All photos source: MDE



All photos source: MDE

Existing Wet Pond #2



Low Hazard Dam



Existing Wet Ponds (#3 & #4)



200ft





photo source: freeware, acclaim images

“If everyone is moving forward together, then success takes care of itself”.
-Henry Ford

What's in Your Pond?



What You See is What You Get!

Questions?

Jennifer M. Smith

Sediment, Stormwater, and Dam Safety Program

410-537-3561

Jenniferm.smith@Maryland.gov



What's in Your Pond?



What You See is What You Get!

5 Minute Break

