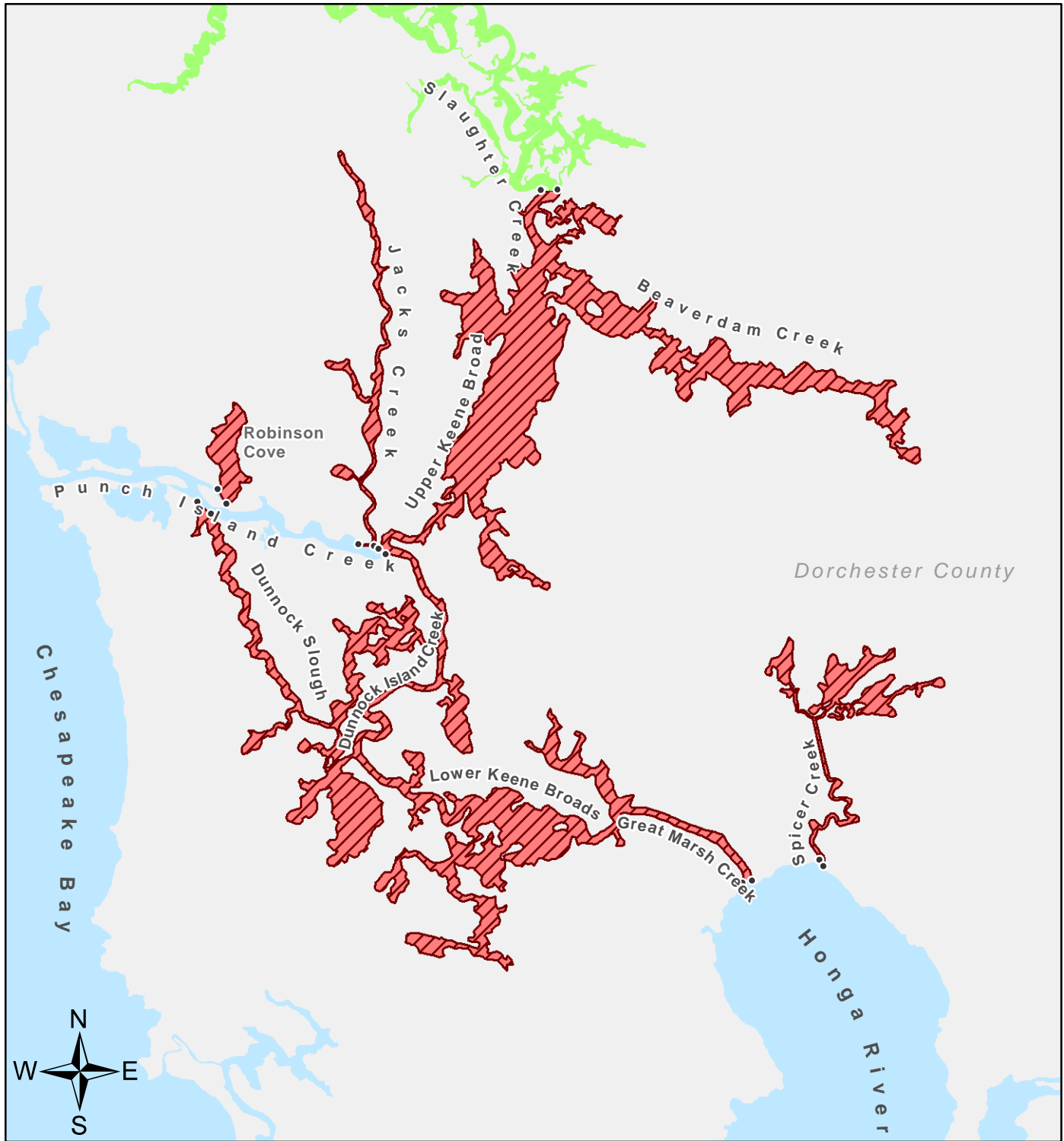


# Notice of Closure to Shellfish Harvesting



Spicer Creek, Robinson Cove, Jacks Creek,  
 Slaughter Creek, Upper Keene Broads, Beaverdam Creek,  
 Dunnock Slough, Dunnock Island Creek, Lower Keene Broads,  
 and Great Marsh Creek, Dorchester County  
 Prohibited Shellfish Area Map 12  
 November 2012

- Remains Conditional By This Letter
- Restricted By This Letter



Martin O'Malley, Governor  
 Anthony G. Brown, Lieutenant Governor  
 Robert M. Summers, Secretary