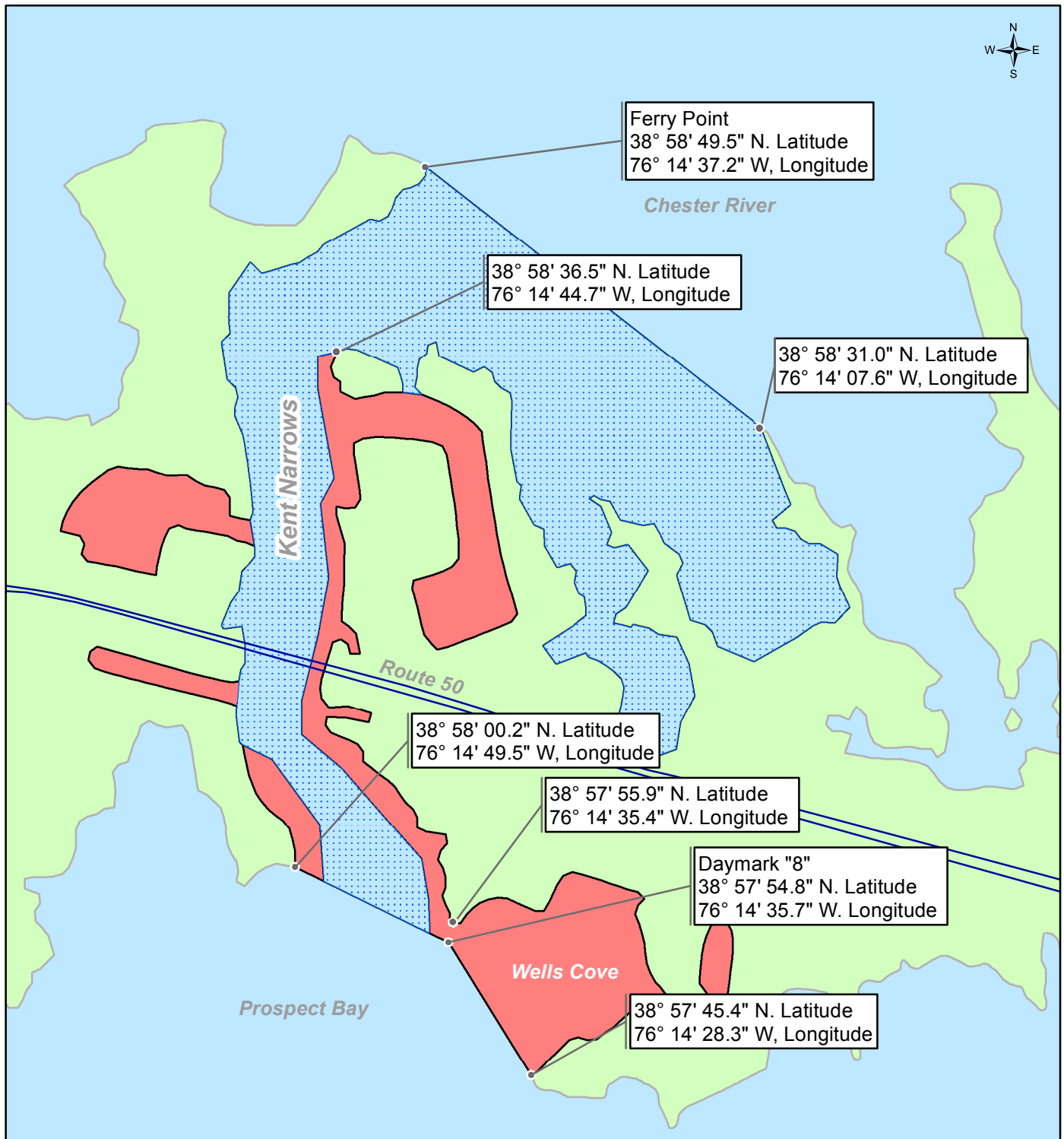



# Notice of Changes to Shellfish Waters



0 0.25 0.5 Miles

Kent Narrows, Queen Anne's County  
 Prohibited Shellfish Area Map 14  
 February 2026

-  Opened By This Letter
-  Remains Restricted By This Letter



Wes Moore, Governor  
 Aruna Miller, Lieutenant Governor  
 Serena C. McIlwain, Secretary