

CALENDAR YEAR 1984
SIXTY-SECOND ANNUAL REPORT
of the
MARYLAND BUREAU OF MINES



TO
HON. HARRY HUGHES
Governor of Maryland

DEPARTMENT OF NATURAL RESOURCES
TORREY C. BROWN, M.D., The Secretary

ENERGY ADMINISTRATION
PAUL MASSICOT, Administrator

From

MARYLAND BUREAU OF MINES

ANTHONY F. ABAR, Director

FOR THE CALENDAR YEAR 1984

STATE OF MARYLAND
DEPARTMENT OF NATURAL RESOURCES
ENERGY ADMINISTRATION
BUREAU OF MINES

FROSTBURG, MARYLAND 21532

LETTER OF TRANSMITTAL

To His Excellency
HONORABLE HARRY HUGHES
Governor of Maryland

Sir:

I have the honor to submit herewith the Sixty-second Annual Report of the Maryland Bureau of Mines for the period January 1, 1984 through December 31, 1984, in compliance with the Maryland Mining Law. This Report is the One Hundred Eighth Annual Report upon conditions of the coal mines within the State.

Very respectfully,

Anthony F. Abar
Director

FOR CALENDAR YEAR 1984

Anthony F. Abar Director
Stephen M. Layton Energy Resources Officer III
Fred L. Bagley Energy Resources Officer III
Alan V. Hooker Energy Resources Officer II
Kenneth K. Eltschlager Energy Resources Officer I
Jeffrey S. McCombs Energy Resources Officer I
Joseph M. Ruperto Energy Resources Officer I
Richard A. Gardner Energy Resources Specialist III
P. Douglas Curtis District Mine Inspector
John C. Eilers District Mine Inspector
Raymond Karlstrand District Mine Inspector
Joseph E. Mills District Mine Inspector
Ruth D. Booth Fiscal Associate
Cathy A. Renner Stenographer Clerk I
Sallie A. Ricker Office Secretary I (9/84-12/84)
Dorothy E. Roberson Office Secretary I (1/84-8/84)
Mary Lynn Pegg Laboratory Scientist IV
Buford J. McDonald Conservation Associate IV

FOR THE CALENDAR YEAR 1984
REPORT OF THE MARYLAND BUREAU OF MINES

Coal production in Maryland during 1984 totalled 3,993,299.82 tons. Production for 1984 represents an increase of 906,464.25 from the 1983 production of 3,086,835.57 tons.

SUMMARY OF 1984 STATISTICS¹

COAL PRODUCTION

Mining Method	Allegheny County	Garrett County	Total	%
Strip	729,522.35	1,142,402.03	1,871,924.38	46%
Deep	0	2,117,657.44	2,117,657.44	53%
Auger	613.00	3,105.00	3,718.00	1%
TOTALS . .	730,135.35	3,263,164.47	3,993,299.82	100%

EMPLOYEES¹

Type of Mine	Allegheny County	Garrett County	Total	Fatalities
Deep	0	476	476	1
Strip	230	252	482	0
TOTALS² . .	230	728	958	1

Allegheny County shows a production of 3,174.50 net tons per man employed during 1984.

Garrett County shows a production of 4,482.36 net tons per man employed during 1984.

¹Reports submitted by Maryland mining operators.

²These figures do not include office, supervisory personnel or independent truck haulers.

FOR THE CALENDAR YEAR 1984

TONNAGE BY COAL SEAMS

Allegheny County

Waynesburg	135,463.52
Sewickley (Tyson).	168,294.06
Redstone	47,507.25
Pittsburgh	267,286.79
Morantown.	34,340.92
L. Pittsburgh.	0
Franklin	24,343.52
Harlem	0
Bakerstown	14,469.23
Freeport	33,114.11
Kittanning	0
Barton	5,315.95
TOTAL	730,135.35

Garrett County

Sewickley.	0
Pittsburgh	282,426.99
Morantown.	0
L. Pittsburgh	125,626.00
Franklin	6,371.05
Barton	73,208.30
Elk Lick	146,434.70
Harlem	840.00
Bakerstown	316,843.02
Brush Creek.	0
Freeport	2,191,556.28
Kittanning	119,858.13
TOTAL	3,263,164.47

TONNAGE BY BASIN

Lower Youghiogheny	218,548.57
Upper Youghiogheny	23,356.21
Casselman	72,516.05
Casselman (Cherry Creek)	52,799.04
Potomac	2,462,751.61
George's Creek	1,163,328.34
TOTAL	3,993,299.82

STATISTICS OF COAL PRODUCTION, CALENDAR YEAR 1984
FOR ALLEGANY COUNTY

Name of Operator	Permit Number	Coal Seam Worked	Employees	Days Worked	Man-Hour Exposure	TONNAGE				ACRES			
						Deep	Strip	Auger	Stripped	Back-filled	Planted	Approved	
Alpha Mining, Inc.	362	Pittsburgh	2	60	300		215.30			4.0	0.0	0.0	0.0
Ayers Coal Co.	323	Franklin	2	164	1,121		2,931.00			4.0	0.0	0.0	2.0
Bessemer Iron & Coal	296	Bakerstown	5	99	3,800		.00			0.0	0.0	0.0	0.0
Brashear Coal Mines	264	Pittsburgh Morantown L.Pittsburgh Franklin	8 - - -	280 - - -	14,458 - - -		5,076.50 2,276.10 .00 17,053.30			3.0 - - -	0.8 0.0 1.7 3.5	0.8 0.0 1.7 3.5	0.0 - - -
Buffalo Coal Co.	276 326 328 334 359 SC-83-104 SC-83-101	Pittsburgh Pittsburgh Tyson Franklin Pittsburgh Tippie Tippie	0 6 4 0 2 3 3	0 237 128 0 19 237 195	0 11,376 3,614 0 342 5,987 4,895		.00 28,784.00 1,097.00 .00 401.00			9.0 6.0 0.0 0.0 3.0	0.0 0.0 5.5 0.0 0.0	0.0 0.0 0.0 0.0 0.0	0.0 0.0 0.0 6.5 0.0
Clise Coal Co.	234 315	Tyson Tyson	0 3	0 119	0 3,826		.00 5,638.30			0.0 13.0	0.0 12.7	0.0 12.7	0.0 0.0
Commonwealth Coals	337 373	Morantown Pittsburgh Morantown Redstone	0 6 - -	0 244 - -	0 11,176 - -		.00 27,291.91 19,653.57 8,836.58			0.0 14.7 - -	1.0 3.5 0.0 0.0	2.5 0.0 0.0 0.0	0.0 0.0 - -

STATISTICS OF COAL PRODUCTION, CALENDAR YEAR 1984
FOR ALLEGANY COUNTY

Name of Operator	Permit Number	Coal Seam Worked	Employees	Days Worked	Man-Hour Exposure	TONNAGE			ACRES			
						Deep	Strip	Auger	Stripped	Back-filled	Planted	Approved
Delta Coal Sales	SC-83-107	Tipple	9	255	15,519							
Delta Mining, Inc.	213	Waynesburg	21	250	41,895		86,680.94		19.0	24.0	21.0	32.0
		Sewickley	-	-	-		57,787.29		-	15.0	7.0	-
		Pittsburgh	2	48	780		2,647.95		-	0.0	0.0	-
	270	Waynesburg	0	0	0		.00		0.0	7.0	7.0	0.0
J. Duckworth Coal Co.	324 352 372	Pittsburgh	0	0	0		.00		0.0	0.0	0.0	4.5
		Pittsburgh	4	235	8,256		28,256.93		0.0	0.0	0.0	0.0
		Pittsburgh	2	158	3,024		5,895.22		0.0	0.0	0.0	0.0
R. Duckworth Coal Co.	357 381	Bakerstown	0	0	0		.00		0.0	0.0	0.0	0.0
		Bakerstown	2	227	4,272		14,469.23		4.5	6.0	6.0	0.0
Eagle Mining Inc.	371 378	Freeport	6	165	8,976		33,114.11		35.0	0.0	0.0	0.0
		Barton	5	23	1,250		5,136.00		6.0	3.0	0.0	0.0
Eckhart Coal Co.	184A	Franklin	2	247	3,852			613.00	0.0	0.0	0.0	5.0
Evans Coal Co.	384	Pittsburgh	3	120	1,333		7,393.99		1.0	0.5	0.0	0.0
Ever, Inc.	SC-83-114	Gob Pile	0	0	0							
Fairview Coal Co.	380	Pittsburgh Morantown	1	87	368		365.70 88.03		0.0	0.0	0.0	0.0
			-	-	-				-	0.0	0.0	-

STATISTICS OF COAL PRODUCTION, CALENDAR YEAR 1984
FOR ALLEGANY COUNTY

Name of Operator	Permit Number	Coal Seam Worked	Employees	Days Worked	Man-Hour Exposure	TONNAGE				ACRES			
						Deep	Strip	Auger	Stripped	Back-filled	Planted	Approved	
Fetterolf Mining, Inc.	388	Kittanning	0	0	0	.00			0.0	0.0	0.0	0.0	0.0
Hi-Note, Inc.	231 355	Pittsburgh Barton	3 2	243 3	7,541 48	24,857.38 179.95			4.0 3.0	8.1 8.0	8.1 8.0	0.0 0.0	0.0 0.0
Jones Coal, Inc.	385	Waynesburg	4	153	4,030	26,829.73			15.5	0.0	0.0	0.0	0.0
Clyde Marsh Coal Co.	268	Redstone	2	134	1,870	1,406.50			0.0	18.5	18.5	0.0	0.0
C.J. Merlo, Inc.	182 393	Pittsburgh Redstone Pittsburgh	0 5 -	0 110 -	0 4,979 -	.00 2,574.44 212.93			0.0 8.0 -	0.0 0.0 0.0	0.0 0.0 0.0	0.0 0.0 -	0.0 0.0 -
Oliver Mining, Co.	233 338	Pittsburgh Franklin	10 10	276 143	15,125 7,563	27,855.01 3,746.22			1.0 0.0	0.0 0.0	0.0 0.0	0.0 0.0	0.0 0.0
T.G.&C. Coal Co.	286 374	Waynesburg Sewickley Waynesburg	4 5 6	44 170 126	1,953 7,279 7,589	3,309.04 9,659.18 12,596.89			0.0 -	0.0 0.0	0.0 0.0	0.0 -	0.0 0.0
Tower Resources, Inc.	251 389	Sewickley Pittsburgh	0 4	0 113	0 2,297	Completed 10,942.24			0.0 14.0	0.0 0.0	0.0 0.0	0.0 0.0	110.0 0.0
SC-83-110		Morantown Tiptle	4 0	91 0	1,719 0	10,125.91			8.0	0.0	0.0	0.0	-

STATISTICS OF COAL PRODUCTION, CALENDAR YEAR 1984
FOR ALLEGANY COUNTY

Name of Operator	Permit Number	Coal Seam Worked	Employees	Days Worked	Man-Hour Exposure	TONNAGE			ACRES			
						Deep	Strip	Auger	Stripped	Back-filled	Planted	
Win-More Mining & Const.	273	Pittsburgh	5	173	6,600		5,078.08		2.5	0.0	0.0	
		Redstone	-	-	-		6,730.54		-	0.0	0.0	
		Morantown	-	-	-		1,637.21		-	0.0	0.0	
		Tyson	-	-	-		4,504.29		-	0.0	0.0	
		Pittsburgh	5	58	2,320		1,967.65		1.5	0.0	0.0	
Winner Bros. Coal Co.	40 207	Redstone	-	-	-		3,818.19		-	0.0	0.0	
		Morantown	-	-	-		560.10		-	0.0	0.0	
		Redstone	6	259	14,028		23,581.00		3.0	62.0	62.0	
		Tyson	11	259	18,515		65,788.00		4.0	0.0	0.0	
		Pittsburgh	9	259	17,441		61,111.00		-	22.3	16.7	
Win-More Mining & Const.	247	Pittsburgh	7	259	11,150		17,074.00		1.0	43.4	32.0	
		Tyson	5	132	5,738		12,020.00		-	0.0	0.0	
		Sewickley	7	110	7,491		11,800.00		0.0	38.6	38.6	
		Redstone	3	66	1,925		560.00		4.0	24.1	19.2	
		Waynesburg	5	149	8,706		3,988.00		2.5	11.0	0.0	
Win-More Mining & Const.	375	Pittsburgh	5	259	13,165		11,860.00		2.0	0.0	0.0	
		Waynesburg	2	2	32		2,058.92		14.0	14.6	14.6	
		Tipple	0	0	0							
		SC-83-112										
		TOTAL ALLEGANY COUNTY			230	7,188	319,524		729,522.35		613.00	224.2

STATISTICS OF COAL PRODUCTION, CALENDAR YEAR 1984
FOR GARRETT COUNTY

Name of Operator	Permit Number	Coal Seam Worked	Employees	Days Worked	Man-Hour Exposure	TONNAGE			ACRES				
						Deep	Strip	Auger	Stripped	Back-filled	Planted	Approved	
A & R Coal Co.	257	Freeport	0	0	0	.00			0.0	0.0	0.0	21.2	0.0
Action Mining, Inc.	272	Kittanning	3	185	4,466	11,382.00			0.0	7.0	3.0	0.0	0.0
		Freeport	-	-	-	954.00			-	22.2	15.3	-	-
	295	Kittanning	4	247	8,467	14,497.00			1.0	13.2	2.5	10.0	0.0
		Freeport	-	-	-	6,715.00			-	1.0	0.0	-	-
	295A	Kittanning	0	0	0		1,736.00		0.0	0.0	0.0	0.0	0.0
	394	Freeport	-	-	-		605.00		-	0.0	0.0	-	-
		Harlem	3	56	813	840.00			15.0	0.0	0.0	0.0	0.0
Allegheny Mining Corp.	277	Freeport	12	238	22,848	49,421.00			11.0	53.0	26.0	12.0	0.0
Beener Coal Co.	143	Pittsburgh Franklin	20	309	51,993	217,059.57			44.0	15.0	15.0	0.0	0.0
			-	-	-	6,071.25			-	10.0	10.0	-	-
Bittinger Coal Co.	265	Freeport	3	67	1,238	423.00			3.0	0.0	0.0	0.0	0.0
	298	Kittanning	3	86	2,161	2,955.04			13.0	0.0	0.0	0.0	0.0
Buffalo Coal Co., Inc.	215	Bakerstown	8	237	16,294	38,624.00			15.0	9.7	9.7	0.0	0.0
	240	Freeport	6	85	4,536	13,418.00			19.5	10.5	10.5	63.8	0.0
	304	Freeport	0	0	0	.00			0.0	0.0	0.0	4.0	0.0
	360	Freeport	6	237	11,880	39,410.00			10.0	44.7	41.5	0.0	0.0
	366	Barton	11	237	22,730	57,036.00			48.0	75.0	110.0	0.0	0.0
	367	(in WV)											
SC-83-102		Tipple	4	237	7,803								
SC-83-103		Tipple	4	237	8,644								
SC-83-105		Tipple	0	0	0								

area of mineral extraction is entirely in the State of West Virginia

STATISTICS OF COAL PRODUCTION, CALENDAR YEAR 1984
FOR GARRETT COUNTY

Name of Operator	Permit Number	Coal Seam Worked	Employees	Days Worked	Man-Hour Exposure	TONNAGE			ACRES			
						Deep	Strip	Auger	Stripped	Back-filled	Planted	Approved
Delta Mining, Inc.	280	Brush Creek	0	0	0		.00		0.0	0.0	0.0	20.0
	309	Bakerstown	0	0	0		.00		0.0	0.0	0.0	22.0
	345	Bakerstown	7	246	9,709		22,355.05		7.0	26.0	20.0	0.0
	SC-83-108	Tipple	1	30	240							
J. Duckworth Coal Co.	364	Bakerstown	2	159	2,544		9,547.15		9.0	6.0	6.0	0.0
G&S Coal Co.	325	Barton	2	190	3,280		8,347.00		11.0	0.0	0.0	0.0
	365	Freeport	10	248	19,840		54,380.00	764.00	3.0	0.0	0.0	0.0
	365A	Freeport	6	38	1,824				0.0	0.0	0.0	0.0
Highland Mining	239	Freeport	0	0	0		.00		0.0	0.0	0.0	4.0
Hilltop Const.	387	Freeport	12	235	19,339		38,389.38		10.0	8.9	5.8	0.0
Inter-State Lumber Co.	335	Bakerstown	19	296	45,128		170,325.16		36.0	19.2	19.2	7.0
	336	Freeport	0	0	0		.00		0.0	0.0	0.0	32.5
Jones Coal, Inc.	376	Kittanning	5	219	4,890		31,353.22		4.0	7.4	7.0	0.0
Jones Mining Inc.	386	Kittanning	4	151	2,782		16,870.19		14.0	0.0	0.0	0.0
L.C. Coal Co.	343	Bakerstown	7	220	12,886		23,110.37		7.9	8.0	3.0	0.0
Masteller Coal Co.	379	Bakerstown	8	254	18,063		38,052.79		31.0	55.0	24.0	0.0
	DM102	Kittanning	0	0	0	.00			0.0	0.0	0.0	14.0
	DM107	Elk Lick	37	256	76,168	146,434.70			0.0	0.0	0.0	0.0

STATISTICS OF COAL PRODUCTION, CALENDAR YEAR 1984
FOR GARRETT COUNTY

Name of Operator	Permit Number	Coal Seam Worked	Employees	Days Worked	Man-Hour Exposure	TONNAGE			ACRES			
						Deep	Strip	Auger	Stripped	Back-filled	Planted	Approved
Mettiki Coal Corp.	DM101	Freeport	180	243	369,583	480,857.51			0.0	0.0	0.0	0.0
	DM104	Freeport	122	243	251,253	772,170.72			0.0	0.0	0.0	0.0
	DM105	Freeport	128	243	264,257	677,129.83			0.0	0.0	0.0	0.0
Mt. Top Coal Co.	DM103	Kittanning	9	200	14,602	41,064.68			0.0	0.0	0.0	0.0
Oakland Coal Co.	297	Freeport	8	237	14,900		22,178.00		3.0	0.0	0.0	0.0
	310	Harlem	0	0	0		.00		0.0	0.0	0.0	30.0
	377	Freeport	8	241	13,500		7,346.00		6.0	21.0	21.0	0.0
	383	Freeport	8	241	15,200		27,149.00		6.0	0.0	0.0	0.0
Oak Springs Coal Co.	391	Bakerstown	2	10	80		195.00		0.5	1.5	1.5	0.0
Pine Mt. Coal Co.	289	Bakerstown	1	13	100		1,201.50		0.0	4.5	4.5	4.0
	382	Barton Franklin	3	224	4,340		7,825.30		10.0	4.4	4.4	0.0
							299.80			0.0	0.0	
Schwinabart & Green	348	Bakerstown	5	212	8,580		13,432.00		2.0	0.0	0.0	0.0
Stan-Jan Excavating	395	Freeport	1	21	160		245.84		2.0	0.0	0.0	0.0
Upperman Coal Co.	206	Bakerstown	0	0	0		.00		0.0	0.0	0.0	8.9
Westwaco Resources	333	L. Pittsburgh	43	253	92,822		125,626.00		64.0	142.0	109.0	63.6
		Pittsburgh					57,512.00			1.0	0.0	
	392	Pittsburgh	3	211	5,729		7,855.42		17.0	0.0	0.0	0.0
TOTAL GARRETT COUNTY			728	7,592	1,435,672	2,117,657.44		3,105.00	422.9	566.2	468.9	317.0
TOTAL ALLEGANY COUNTY			230	7,188	319,524	613.00	224.2	348.8	293.9	174.0		
TOTAL BOTH COUNTIES			958	14,780	1,755,196	2,117,657.44	1,871,924.38	3,718.00	647.1	915.0	762.8	491.0

FOR CALENDAR YEAR 1984
SUMMARY OF LAND MINED, BACKFILLED, AND PLANTED IN 1984
(By Geological Basin)

Table No. 1

	ACRES THIS YEAR*					Planted	Revege Bond Released	Final Reports
	Approved Acres By LRC	Permitted	Stripped	Backfilled				
Allegany County:								
Georges Creek Basin	69.00	181.00	224.20	348.80	293.90	174.00	1	
Garrett County:								
Georges Creek Basin	254.00	235.00	144.50	184.40	150.40	67.60	0	
Potomac River Basin	112.00	133.00	162.50	224.80	222.50	120.70	3	
Casselman River Basin**	68.00	109.60	25.00	69.40	40.80	52.00	2	
Cherry Creek Basin**	0	0	27.00	53.00	26.00	16.00	0	
Upper Yough Basin	0	2.00	9.90	8.00	3.00	0	0	
Lower Yough Basin	0	0	54.00	26.60	26.20	60.70	2	
TOTAL GARRETT COUNTY	434.00	479.60	422.90	566.20	468.90	317.00	7	
TOTAL BOTH COUNTIES	503.00	660.60	647.10	915.00	762.80	491.00	8	

Table 2

ACRES CUMULATIVE FROM JANUARY 1, 1975 - DECEMBER 31, 1984

Allegany County:							
Georges Creek Basin	6,319.28	5,189.50	3,580.80	3,008.67	3,006.00	2,301.40	36
Garrett County:							
Georges Creek Basin	1,537.00	1,339.00	1,297.55	1,072.35	1,335.55	1,086.30	8
Potomac River Basin	2,742.20	2,575.00	1,696.20	1,765.90	1,973.40	2,049.70	20
Casselman River Basin**	1,602.30	1,284.60	922.00	1,030.50	883.70	744.00	20
Cherry Creek Basin**	574.00	662.00	620.90	486.40	449.80	408.75	8
Upper Yough Basin	253.00	216.00	150.35	167.35	141.30	190.90	4
Lower Yough Basin	1,142.50	1,244.00	829.00	1,011.46	920.16	688.40	26
TOTAL GARRETT COUNTY	7,851.00	7,320.60	5,516.00	5,533.96	5,703.91	5,168.05	86
TOTAL BOTH COUNTIES	14,170.28	12,510.10	9,096.80	8,542.63	8,709.91	7,469.45	122

*Where difference occurs between Approved and Permitted, either Permit was approved in 1983 and not issued until 1984, or Permit was not issued.

**Both Casselman Geological Basin.

Table No. 3

FOR CALENDAR YEAR 1984

SUMMARY OF MINING AND RECLAMATION STATISTICS

	1975 - 1984											Cumulative Total
	1975	1976	1977	1978	1979	1980	1981	1982	1983	1984		
New Surface Mine Licenses Issued	20	12	13	9	8	6	10	8	13	5	104	
New Surface Mine Permits Issued	37	19	25	20	7	19	0	11	12	7	157	
New Deep Mine Permits Issued	0	0	1	5	0	0	0	1	0	0	7	
A.M.&R.P.R.'s Processed	92	111	135	156	139	111	100	99	97	71	1,111	
Amended Permits Processed	62	38	36	24	8	19	11	15	11	4	228	
Forfeitures	0	0	0	1	4	5	1	0	0	3	14	
Permits Completed and Planted	16	3	19	17	19	15	16	16	11	9	141	
Site Evaluation Committee Days	23	28	32	23	22	25	22	31	25	28	259	
Land Reclamation Committee Days	14	12	11	13	9	11	9	12	15	9	115	

FOR THE CALENDAR YEAR 1984

LAND RECLAMATION COMMITTEE

Members:

The following members served on the Land Reclamation Committee during 1984:

DEPARTMENT OF NATURAL RESOURCES REPRESENTATIVES:

Kenneth N. Weaver (Chairman), Maryland Geological Survey
Stephen M. Layton, Bureau of Mines
Paul Mateer, Forest, Park, and Wildlife Service
Edward Golden, Forest, Park, and Wildlife Service

DEPARTMENT OF HEALTH AND MENTAL HYGIENE REPRESENTATIVE:

Robert V. Creter, Office of Environmental Programs

CITIZENS' REPRESENTATIVES:

June Neder, Allegany County
Hugh Trimble, Garrett County

COUNTY PLANNING & ZONING REPRESENTATIVES:

Tim Carney, Allegany County
Fran Pope, Garrett County

SOIL CONSERVATION DISTRICT REPRESENTATIVES:

Craig Hartsock, Allegany Soil Conservation District
Shaun Sanders, Garrett Soil Conservation District

COAL INDUSTRY REPRESENTATIVES:

John E. Carey
James M. Coffroth

Meetings

The Land Reclamation Committee meets at the Bureau of Mines' Office in Frostburg, Maryland. All meetings are open to the public and are announced in the Maryland Register and local papers.

FOR THE CALENDAR YEAR 1984

Functions and Duties of the Committee:

The Land Reclamation Committee oversees land reclamation activities related to the surface mining of coal in Maryland. It is directed by statute (Annotated Code of Maryland, Natural Resources Article, §7-205/b/) to: "... study, recommend, and approve all procedures for reclamation, conservation and revegetation of any area affected by open pit mining within the State ..."

Section 7-507(c)(3) states the Committee may enter on any open pit operation to determine land reclamation conditions and progress. If the Committee finds any violations of the permit requirements it may order the Department to suspend the permit until corrective action is taken.

The Land Reclamation Committee visits sites for which mining permit applications have been submitted/approved to: (1) determine the suitability of the proposed reclamation plan; (2) review annual mining and reclamation progress; and (3) evaluate revegetation.

The specific duties addressed by the Committee during its monthly meetings include:

1. Review and approval of all reclamation plans;
2. Review and approval of all Annual Mining and Reclamation Progress Reports;
3. Establish amount of revegetation bond for each operation;
4. Review and approval of all revegetation bond releases.

Other functions of the Land Reclamation Committee include:

1. Study and recommend any amendments to the strip mining law and regulations;
2. Recommend to the Department the expenditure of funds for as much as 50% of the cost of lime, fertilizer and seed for an approved mining and reclamation plan;
3. Approve the expenditure of funds that are received by the Department from any sources for the reclamation and revegetation of any strip mined area within the State.

FOR THE CALENDAR YEAR 1984

REVEGETATION OF STRIP MINED LANDS

By Fred L. Bagley

The State Land Reclamation Committee (LRC) voted to release 491 acres of reclaimed surface coal mined land from a total of 1,151 acres eligible for revegetation bond release during the fall, 1984. This action was taken after consideration of 71 planting reports that were filed by 32 coal companies.

All reclaimed acres were planted with a grass and legume mixture to insure adequate erosion control protection. In addition, trees and/or shrubs were planted on 52 acres.

The LRC also voted to reduce revegetation bond on 79 acres. This was the third year in which revegetation bond could be reduced, the result of a five year revegetation bond holding period which applies to all mining permits issued by the Bureau after July 1, 1979.

Revegetation bonds may be released upon completion of Reclamation Phases. Upon completion of Reclamation Phase II an amount of revegetation bond equal to one half of the established per acre rate for the revegetation bond may be released. Reclamation Phase II is deemed to be complete when:

1. Revegetation has been established in accordance with the approved reclamation plan and the standards for success of revegetation are met (see standards below);
2. The revegetated area is not contributing suspended solids to stream flow or runoff outside the permit area in excess of the requirements of the Regulatory Program, or the permit;

3. With respect to prime farmlands, soil productivity has been returned to the level of yield required;
4. The provisions of a plan approved by the Bureau for the sound future management of any permanent impoundment by the permittee or landowner have been implemented to the satisfaction of the Bureau; and
5. All temporary drainage control structures not authorized to remain on the permit area to be released are removed and the affected area regraded, seeded, mulched or all permanent structures are inspected and their deficiencies repaired by the operator.

Upon completion of Reclamation Phase III, the revegetation bond remaining on an area may be released. At this time, acreage may be released from the permit area. Reclamation Phase III is deemed to be complete when the permittee has successfully completed surface coal mining and reclamation operations in accordance with the approved reclamation plan and achieved compliance with the requirements of the Regulatory Program, and the applicable liability period has expired.

Bond monies cannot be returned to permittees until they comply with three procedural requirements of the mining law: (1) advertise once a week for four consecutive weeks in a newspaper of general circulation in the jurisdiction affected, (2) to notify adjoining property owners, local government bodies, sewage authorities and water companies by certified mail of the pending bond release, and (3) make application for bond release to the Bureau. (The Bureau of Mines must receive copies of the advertisements and landowner notifications.)

The standards used by the LRC and the Bureau for revegetation bond release and reduction are as follows:

1. Area must be 90% covered.
2. Area must be covered by at least 10% permanent legume, well distributed.
3. Bare areas must not exceed 900 square feet at any particular location. However, the overall coverage of 90% must be obtained.
4. There must not be any depression(s) or rills and gullies over nine inches in depth in the revegetated area.
5. There must not be any seeps discharging toxic water that causes degradation to the vegetation growing on the area.
6. There must not be any permit suspension/revocation, bond forfeiture, or other enforcement action pending on the permit area.
7. A minimum of 450 living stems well distributed per acre is required when trees and shrubs are planted.
8. Any special reclamation requirements approved in the mining permit must be met.
9. Bond reductions are not considered before at least two growing seasons. (Maryland's planting season is defined as from March until September; planting before June 15 constitutes a planting season for that particular year.)

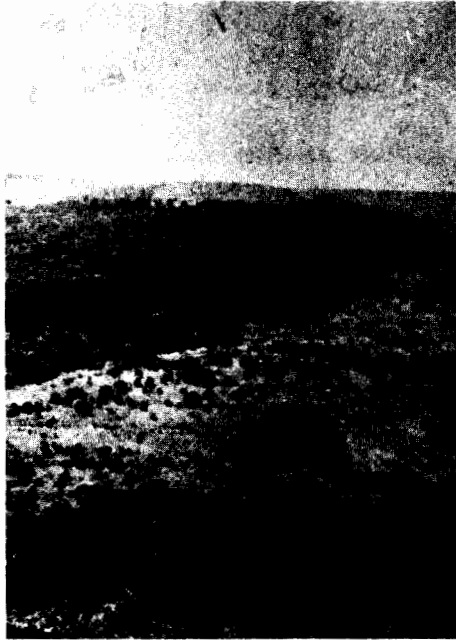
When all of the above requirements have been achieved, it is possible that a longer evaluation time may be required if the health conditions of the vegetation are questionable.

Landowner requests for limited use can be considered by the LRC and the Bureau at any monthly public hearing.

The principal reason for disapproval of acres in 1984 was the need for more evaluation time after repair seeding, topdressing, reseeding or diversion ditch repair or deletion.

The number of acres released was 43% of the number of acres eligible for release. This, compared to an average of 62% in past years, reflects poorer results are being obtained.

In January of each year, a listing of the acres eligible for revegetation bond release during that year is compiled and is available upon request from the Bureau of Mines.



A reclaimed mine on the Savage River State Forest. This area was mined during 1971-75 and reclaimed in 1976. Presently, it is being used for forestry and wildlife habitat.



A strip mined area reclaimed for pastureland use. Note active mining still in progress. Reclamation and revegetation are kept current with mining.

FOR CALENDAR YEAR 1984

ABANDONED MINE LAND RECLAMATION

The Maryland Bureau of Mines administers two programs to reclaim and/or restore land and water resources adversely affected by past coal mining practices. These two programs are, (1) Maryland Federal Abandoned Mine Reclamation Program, implemented utilizing Federal funds under the authority of the Federal Surface Mining Control and Reclamation Act of 1977, (U.S. Public Law 95-87), and Chapter 399 of the Acts of 1979 (Natural Resources Article, Title 7, Subtitle 9 of the Annotated Code of Maryland), and (2) Maryland Mine Reclamation Program, implemented utilizing funds from the Bituminous Coal Open-Pit Mining Reclamation Fund under the authority of Natural Resources Article, Title 7, Subtitle 5, Sections 7-507.1, 7-510, and 7-5A-12.

Maryland Federal Abandoned Mine Reclamation Program

The Maryland Abandoned Mine Lands (AML) Reclamation Plan received Federal approval on July 16, 1982, thus enabling Maryland to receive and expend Federal funds for the reclamation of abandoned mine lands. During 1984, grants for the reclamation of abandoned mine problem areas have been awarded to Maryland by the U.S. Department of Interior, Office of Surface Mining. These grants provide \$840,030.00 for the reclamation of approximately 84 acres of abandoned mine lands in Allegany and Garrett Counties, Maryland.

AML Projects Under Construction During 1984

1. Amish Road Reclamation Project

Location: Approximately 3 1/2 miles SW of
 Grantsville along Amish Road, Garrett
 County.

Scope of Work: Eliminate health and safety hazards posed by an abandoned surface coal mine adjacent to Amish Road and the unauthorized dumping of garbage in the abandoned mine pit; improve water quality discharge; backfill and regrade spoil, and revegetate.

Project Size: Approximately 30 acres.

Project Cost: \$200,000.00 Federal AML.

2. Trap Run Road Reclamation Project

Location: Near Friendsville, Garrett County.

Scope of Work: Eliminate health and safety hazards posed by the open pit immediately adjacent to Trap Run Road and the unauthorized dumping of garbage in the pit; backfill and regrade high wall and pit area; and revegetate.

Project Size: Approximately 17 acres.

Project Cost: \$68,000.00 Federal AML.

3. Franklin Portal Reclamation Project

Location: Franklin, Allegany County.

Scope of Work: Barricade abandoned deep mine portal to prevent entry. Control and direct mine drainage.

Project Size: 1/2 acre.

Project Cost: \$3,500.00 Federal AML.

4. Westernport Landslide Amelioration Project

Location: Westernport, Allegany County.

Scope of Work: Stabilize a landslide area, control and direct deep mine drainage, and revegetate all disturbed areas.

Project Size: 8 acres.

Project Cost: \$200,000.00 Federal AML.

Emergency Reclamation Projects

Two emergency abandoned mine problems were addressed during 1984 through the combined efforts of the Maryland Bureau of Mines and the Office of Surface Mining. The first emergency problem arose as a result of a July 1, 1984 storm event which hit the Woodland Creek Watershed, Allegany County. Storm runoff impounded in an abandoned surface mine pit, subsequently breached, and sent a flood wave through an area of abandoned coal mine waste. This flood caused extensive damage to several residences in Klondike, MD.

The Office of Surface Mining awarded a contract totalling \$345,000.00 to restore the stream flow capacity of Woodland Creek and regrade the abandoned mine lands and coal mine waste areas adjacent the stream. Construction is expected to be completed by mid-summer 1985.

The second emergency abandoned mine problem occurred on December 17, 1984, when a portion of an abandoned deep mine subsided under a residence in Westernport, Maryland. The collapsed mine roof resulted in a void under the house foundation and porch area. The Office of Surface Mining contracted to pump concrete grout into the void, thus providing support for the structure. The problem was corrected within one week of the occurrence and cost approximately \$6,000.00. No damage occurred to the structure.

Maryland Mine Reclamation Program

Utilizing monies from the Bituminous Coal Open-Pit Mining Reclamation Fund, (derived from a 9¢ per ton of coal mined surcharge) 22 acres of abandoned mine lands were reclaimed during 1984. Funding for reclamation of these projects totalled \$22,125.00.

Projects Under Construction During 1984

1. Franklin Gob Pile Drain

Location: Franklin, Allegany County, located adjacent to Old Route 36.

Scope of Work: Installation of several french drain structures to direct mine drainage from surface seep areas, which were inhibiting vegetative growth and stability. Regrade road bank and revegetate disturbed areas.

Project Size: Approximately 1 acre.

Project Cost: BCMRF Deep Mine \$3,000.00.

2. Merrill Reclamation Project

Location: Near Grantsville, adjacent to Fosters Inn Road, Garrett County.

Scope of Work: Backfill, regrade and revegetate abandoned surface mine area.

Project Size: Approximately 5 acres.

Project Cost: BCMRF Garrett Co. \$14,000.00

3. Loar Reclamation Project

Location: Midland, Allegany County.

Scope of Work: Rework runoff collection ditch to collect and direct abandoned surface mine runoff away from spring and residents house, revegetate.

Project Size: Approximately 1/2 acre.

Project Cost: BCMRF Allegany Co. \$525.00.

4. Eagle Rock Revegetation Project

Location: Eagle Rock, near Potomac-Garrett State
Forest Headquarters, Garrett County.

Scope of Work: Revegetate abandoned surface mine area.

Project Size: Approximately 15 acres.

Project Cost: BCMRF Garrett Co. \$4,600.00.

FOR CALENDAR YEAR 1984

DEEP MINE

MINE FOREMAN AND FIRE BOSS
EXAMINATIONS AND CERTIFICATIONS

The number of Mine Foremen and Fire Boss examinations conducted from 1974 through 1984 are identified below.

YEAR	APPLICANTS EXAMINED		APPLICANTS CERTIFIED	
	Mine Foreman	Fire Boss	Mine Foreman	Fire Boss
1984	0	0	0	0
1983	1	26	1	21
1982	11	60	7	20
1981	0	0	0	0
1980	8	36	3	21
1979	14	28	12	26
1978	30	16	22	16
1977	0	0	0	0
1976	11	0	11	0
1975	0	0	0	0
1974	2	0	1	0

INSPECTION AND ENFORCEMENT ACTIVITIES

TOTAL INSPECTIONS:	Complete -	1,259
	Partial -	518
ENFORCEMENT ACTIONS:	Notices of Violation -	127
	Cessation Orders -	43
FORFEITURES - 1984: 3		

COMPARATIVE ACCIDENT REPORT

Year	Man-Hour Exposure	Tons Produced	Fatalities	Lost Time Accidents	Frequency	Fatalities Per Million Man-Hours	Fatalities Per Million Short Tons	Non-Fatal Per Million Man-Hours	Non-Fatal Per Million Short Tons	Tons Per Fatality	Tons Per Non-Fatal Injuries
1984	1,749,464.25	3,993,299.82	1	35	20.00	.57	.25	20.00	8.76	3,993,299.82	114,094.28
1983	1,367,297.75	3,086,835.57	0	5	3.65	0	0	3.65	1.61	0	617,367.11
1982	2,085,157.75	3,459,891.66	0	5	2.39	0	0	2.39	1.44	0	691,978.33
1981	2,218,325.69	4,451,559.31	0	82	36.96	0	0	36.96	18.42	0	54,287.30
1980	2,089,982.5	3,760,092.25	0	61	29.18	0	0	29.18	16.22	-	61,640.85
1979	1,855,326.73	2,716,617.07	3	29	15.63	1.61	1.10	14.01	9.51	905,539.02	104,485.27
1978	1,429,612	2,851,321.89	1	24	16.78	.69	.35	16.08	8.06	2,851,321.89	123,970.51
1977	1,373,626.25	3,028,629.66	0	15	10.9	N.A.	0	10.92	4.95	-	201,908.64
1976	1,287,997.5	2,695,178.96	0	4	3.10	N.A.	0	3.10	1.48	-	673,794.74
1975	981,372	2,520,765.27	1	5	5.09	1.01	.39	4.07	1.58	2,520,765.27	630,191.31
1974	697,707.5	2,221,412.94	1	0	N.A.	1.43	.45	0	0	2,221,412.94	N.A.
1973	541,210	1,754,130.93	0	3	5.54	0	0	5.54	1.71	1,754,130.93	584,710.31
1972	520,285	1,638,418.46	0	5	9.61	0	0	9.61	3.05	1,638,418.46	327,683.69
1971	806,056	1,591,677.20	0	6	7.44	0	0	7.44	3.77	1,591,677.20	365,379.53

FOR THE CALENDAR YEAR 1984

ACCIDENT REPORT

COMPANY	PERMIT NUMBER	NUMBER OF NON-FATAL ACCIDENTS	NUMBER OF FATAL ACCIDENTS	WORKING DAYS LOST	FATAL ACCIDENTS
Masteller Coal Co.	379	1	1	20	0
Masteller Coal Co.	DM-107	1	1	124	0
Allegheny Mining	277	1	1	8	0
Mettiki Coal	DM-101	9	9	289	1
Mettiki Coal	DM-104	11	11	450	0
Mettiki Coal	DM-105	9	9	94	0
Westvaco Res.	333	3	3	18.5	0

FOR CALENDAR YEAR 1984

Permit No.	1	The George's Creek Lumber Company*
Permit No.	2	Allegheny Engineering Company*
Permit No.	3	B.M.W. Coal Company*
Permit No.	4	Old Hampshire Coal Company, Inc.*
Permit No.	5	Car and Gotfelty Construction Co.*
Permit No.	6	M.H. Bigan Coal Company*
Permit No.	7	Moran Coal Company*
Permit No.	8	Allegheny Engineering Company*
Permit No.	9	Schell Mining Company, Inc.*
Permit No.	10	B & U Coal Company*
Permit No.	11	Morgan Contracting Company**
Permit No.	12	Romadale Coal Corporation*
Permit No.	13	Cross Fuel Company*
Permit No.	14	Highland Construction Company*
Permit No.	15	Phoenix Big Vein Coal Company (Repermitted 338)
Permit No.	16	Moran Coal Company*
Permit No.	17	T.J. Cramblett**
Permit No.	18	Moscow-Georges Creek Coal Company*
Permit No.	19	J.R. Thrasher Contracting & Stripping Co.*
Permit No.	20	Moran Coal Company (Repermitted 333)*
Permit No.	21	Schell Mining Company, Inc.**
Permit No.	22	Savage Coal Company*
Permit No.	23	Moran Coal Company*
Permit No.	24	The Georges Creek Coal & Land Co.*
Permit No.	25	Charles T. Clise*
Permit No.	26	Allegheny Engineering Company*
Permit No.	27	Goodwill Fuel Company*
Permit No.	28	D.B.&B. Coal Company*
Permit No.	29	Queen George's Creek Coal Company**
Permit No.	30	Mack Coal Company**
Permit No.	31	White Crest Coal Company, Inc.**
Permit No.	32	D.B.&B. Coal Company*
Permit No.	33	Moran Coal Company*
Permit No.	34	Chelsie A. Liller*
Permit No.	35	J.E. George Trucking Company**
Permit No.	36	D.B.&B. Coal Company*
Permit No.	37	J.&M. Coal Company**
Permit No.	38	Casey Construction Company**
Permit No.	39	Moran Coal Company*
Permit No.	40	Winner Bros. Coal Company, Inc.
Permit No.	41	Buffalo Coal Company, Inc.*
Permit No.	42	Casey Construction Company**
Permit No.	43	Sara-Ki Coal Company, Inc.*
Permit No.	44	Yantus & Zubek Coal Company*
Permit No.	45	Moran Coal Company*
Permit No.	46	Casey Construction Company**
Permit No.	47	Moran Coal Company*
Permit No.	48	Moran Coal Company*
Permit No.	49	Sara-Ki Coal Company, Inc.*
Permit No.	50	Laurel Creek Company, Inc.**
Permit No.	51	D.B.&B. Coal Company**
Permit No.	52	Moon and Sons*

Permit No. 53 George L. Smith Contracting Company*
 Permit No. 54 The Georges Creek Lumber Company*
 Permit No. 55 Moran Coal Company*
 Permit No. 56 North Branch Coal Corporation*
 Permit No. 57 George Coal Company**
 Permit No. 58 Samuel Compton & Company**
 Permit No. 59 Hoover & White*
 Permit No. 60 Laurel Creek Company, Inc.**
 Permit No. 61 The Eddy Fuel Company**
 Permit No. 62 J.R. Thrasher Contracting & Stripping Co.*
 Permit No. 63 Pittsburgh Coal Company*
 Permit No. 64 Mineral Coal Company, Inc., of West Virginia*
 Permit No. 65 Laurel Creek Company, Inc.*
 Permit No. 66 The Georges Creek Lumber Company*
 Permit No. 67 Chelsie A. Liller*
 Permit No. 68 Casey Contracting Company**
 Permit No. 69 Pine Mountain Coal Company*
 Permit No. 70 Opel and Brenneman*
 Permit No. 71 The Georges Creek Lumber Company*
 Permit No. 72 P.&J. Coal Company*
 Permit No. 73 Casey Contracting Company**
 Permit No. 74 Goodwill Fuel Company*
 Permit No. 75 D.B.&B. Coal Company*
 Permit No. 76 Baughman Contracting Company, Inc.*
 Permit No. 77 P&K Coal Company*
 Permit No. 78 Morgan Contracting Company*
 Permit No. 79 Buffalo Coal Company, Inc.*
 Permit No. 80 Buffalo Coal Company, Inc.*
 Permit No. 81 Randall Robertson*
 Permit No. 82 Hoover & White**
 Permit No. 83 James E. George*
 Permit No. 84 B.M.W. Coal Company, Inc.*
 Permit No. 85 Casey Contracting Company**
 Permit No. 86 Beener Coal Company*
 Permit No. 87 Moran Coal Company, Inc.*
 Permit No. 88 D&K Coal Company*
 Permit No. 89 Brenneman Brothers*
 Permit No. 90 Mack Coal Company*
 Permit No. 91 Clarence Rodamar*
 Permit No. 92 James E. George*
 Permit No. 93 Casey Contracting Company**
 Permit No. 94 Winner Brothers*
 Permit No. 95 Moran Coal Company, Inc.*
 Permit No. 96 Big Vein Coal Company*
 Permit No. 97 Maryland Fuel Company, Inc.*
 Permit No. 98 Yantus-Zubek Coal Company*
 Permit No. 99 J.R. Thrasher Contracting & Stripping Co.*
 Permit No. 100 Trefall Bros., Inc.*
 Permit No. 101 Mack Coal Company*
 Permit No. 102 C.A. Liller Company*
 Permit No. 103 Cross & Brumage Coal Company*
 Permit No. 104 Beener Coal Company*
 Permit No. 105 D&K Coal Company*
 Permit No. 106 Mack Coal Company*

Permit No. 107 Yantus and Zubek*
 Permit No. 108 Potomac Mining Company*
 Permit No. 109 Casey Contracting Company*
 Permit No. 110 Wilhelm Coal Company*
 Permit No. 111 The Georges Creek Lumber Company*
 Permit No. 112 Clark Coal Company*
 Permit No. 113 Casey Contracting Company*
 Permit No. 114 Casey Contracting Company*
 Permit No. 115 Douglas Coal Company*
 Permit No. 116 Red Lion Mining Corporation**
 Permit No. 117 Ebensburg Coal and Clay Company*
 Permit No. 118 James E. George*
 Permit No. 119 Ebensburg Coal and Clay Company*
 Permit No. 120 J.R. Thrasher Contracting & Stripping Co.*
 Permit No. 121 Moran Coal Company, Inc.*
 Permit No. 122 Buffalo Coal Company, Inc.*
 Permit No. 123 J.R. Thrasher Contracting & Stripping Co.*
 Permit No. 124 Win-More Mining & Construction Co., Inc.*
 Permit No. 125 Beener Coal Company*
 Permit No. 126 W.R. Nethken and Company, Inc.*
 Permit No. 127 Mack Coal Company*
 Permit No. 128 J.R. Thrasher Contracting & Stripping Co.*
 Permit No. 129 J. Russell Cravener*
 Permit No. 130 Chelsie A. Liller*
 Permit No. 131 The Georges Creek Lumber Company*
 Permit No. 132 Brenneman Brothers*
 Permit No. 133 W.R. Nethken and Company, Inc.*
 Permit No. 134 Richards and Parnell Coal Company*
 Permit No. 135 William Brashear*
 Permit No. 136 W.R. Nethken and Company, Inc.*
 Permit No. 137 G&S Coal Company, Inc.
 Permit No. 138 J.R. Thrasher Contracting & Stripping Co.*
 Permit No. 139 J.R. Thrasher Contracting & Stripping Co.*
 Permit No. 140 Shallmar Coal Company, Inc.*
 Permit No. 141 Randall Robertson***
 Permit No. 142 Ace Drilling Coal Company, Inc.*
 Permit No. 143 Beener Coal Company
 Permit No. 144 Clarence Rodamer*
 Permit No. 145 Ginniman Coal Company*
 Permit No. 146 Raymond A. Wolf Mining Company*
 Permit No. 147 Menallen Coke Company*
 Permit No. 148 Russel Shafer*
 Permit No. 149 Homage Coal Co. (Emmett Dupstadt)*
 Permit No. 150 Twin States Coal Company**
 Permit No. 151 M.F. Fetterolf Coal Company, Inc.*
 Permit No. 152 Ebensburg Coal and Clay Company**
 Permit No. 153 Raymond A. Wolf Mining Co. (UPRC)*
 Permit No. 154 Michael Rostosky*
 Permit No. 155 Ginniman & Ware Coal Company*
 Permit No. 156 Harold H. Upole Coal Company*
 Permit No. 157 T.G.&C. Coal Company, Inc.*
 Permit No. 158 Clarence Rodamer Coal Company*
 Permit No. 159 Michael Rostosky Coal Company*
 Permit No. 160 Russel Shafer Coal Company*

Permit No. 161 Buffalo Coal Company, Inc.*
 Permit No. 162 J.R. Thrasher Contracting & Stripping Co.***
 Permit No. 163 Buffalo Coal Company, Inc.*
 Permit No. 164 Union Coal Company*
 Permit No. 165 Win-More Mining & Construction Co., Inc.*
 Permit No. 166 Ginniman Coal Company*
 Permit No. 167 Upperman Coal Company*
 Permit No. 168 Frank Pulford*
 Permit No. 169 Winner Bros. Coal Company, Inc.*
 Permit No. 170 Russel Shafer*
 Permit No. 171 The Chief Coal Company*
 Permit No. 172 Mary Ruth Corporation*
 Permit No. 173 Oakland Coal Company
 Permit No. 174 Bernard C. Drees*
 Permit No. 175 Delta Mining, Inc.*
 Permit No. 176 D&K Coal Company, Inc.*
 Permit No. 177 T.G.&C. Coal Company, Inc.*
 Permit No. 178 Emmett Dupstadt*
 Permit No. 179 Somerset Excavating, Inc.*
 Permit No. 180 Ayers Coal Company*
 Permit No. 181 Delta Mining, Inc.*
 Permit No. 182 C.J. Merlo, Inc.
 Permit No. 183 Chief Coal Company*
 Permit No. 184 Eckhart Coal Company
 Permit No. 185 Bessemer Iron & Coal Company*
 Permit No. 186 Coal Lick Coal Company*
 Permit No. 187 Phillips Big Vein Coal Company*
 Permit No. 188 Ace Drilling Coal Company, Inc.*
 Permit No. 189 Buffalo Coal Company, Inc.*
 Permit No. 190 Buffalo Coal Company, Inc.*
 Permit No. 191 Keystone Coal and Development Company
 (Liability Assumed by Garrett County
 Roads Department)
 Permit No. 192 Ace Drilling Company, Inc.*
 Permit No. 193 Wilhelm Coal, Inc.*
 Permit No. 194 M.F. Fetterolf Coal Company, Inc.***
 Permit No. 195 Buffalo Coal Company, Inc.*
 Permit No. 196 Bessemer Iron & Coal Company*
 Permit No. 197 Grafton Coal Company*
 Permit No. 198 Jet Fuel Coal Company*
 Permit No. 199 Bessemer Iron & Coal Company
 Permit No. 200 Chief Coal Company*
 Permit No. 201 Brashear Coal Company*
 Permit No. 202 Winner Bros. Coal Company, Inc.
 Permit No. 203 Mary Ruth Corporation*
 Permit No. 204 Grafton Coal Company*
 Permit No. 205 Chief Coal Company*
 Permit No. 206 Upperman Coal Company
 Permit No. 207 Winner Bros. Coal Company, Inc.
 Permit No. 208 Sanner Bros. Coal Company*
 Permit No. 209 Delta Mining, Inc.*
 Permit No. 210 Markat, Inc.*
 Permit No. 211 Oakland Coal Company*
 Permit No. 212 Bessemer Iron & Coal Company*

Permit No. 213 Delta Mining, Inc.
 Permit No. 214 Inter-State Lumber Company*
 Permit No. 215 Buffalo Coal Company, Inc.
 Permit No. 216 Brashear Coal Company***
 Permit No. 217 Bernard Drees Coal Company*
 Permit No. 218 Buffalo Coal Company, Inc.*
 Permit No. 219 G&S Coal Company, Inc.*
 Permit No. 220 Evans Coal Company*
 Permit No. 221 Brideview Coal Company*
 Permit No. 222 John Duckworth Coal Company*
 Permit No. 223 Edward Mikel*
 Permit No. 224 Delta Mining, Inc.*
 Permit No. 225 Northwest Coal Company, Inc.*
 Permit No. 226 Thrasher Coal Company**
 Permit No. 227 Winner Bros. Coal Company, Inc.*
 Permit No. 228 Bittering Coal Company*
 Permit No. 229 Charles M. Filsinger*
 Permit No. 230 G&H Coal Company, Inc.*
 Permit No. 231 Hi-Note, Inc.
 Permit No. 232 Buffalo Coal Company, Inc.*
 Permit No. 233 Oliver Mining Company
 Permit No. 234 Clise Coal Company
 Permit No. 235 Markat, Inc.*
 Permit No. 236 Delta Mining, Inc.*
 Permit No. 237 Bridgeview Coal Company*
 Permit No. 238 Burnham Coal Company, Inc.*
 Permit No. 239 Highland Mining
 Permit No. 240 Buffalo Coal Company, Inc.
 Permit No. 241 Buffalo Coal Company, Inc.*
 Permit No. 242 Hopwood Strip Mine, Inc.**
 Permit No. 243 Ponderosa Coal Company, Inc.*
 Permit No. 244 Markat, Inc.*
 Permit No. 245 Phillips Coal, Inc.*
 Permit No. 246 Lambert Coal Company*
 Permit No. 247 Winner Bros. Coal Company, Inc.
 Permit No. 248 Buffalo Coal Company, Inc.*
 Permit No. 249 Cobra Fuels*
 Permit No. 250 Laoc Coal Company*
 Permit No. 251 Tower Resources, Inc.
 Permit No. 252 Phillips Coal, Inc.*
 Permit No. 253 Pine Mt. Coal Company*
 Permit No. 254 T.G.&C. Coal Company*
 Permit No. 255 Allegheny Mining Company*
 Permit No. 256 Bridgeview Coal Company*
 Permit No. 257 A&R Coal Company*
 Permit No. 258 Clinton Coal Company**
 Permit No. 259 Tower Resources, Inc.*
 Permit No. 260 Yough Tree Farm*
 Permit No. 261 Russel Shafer***
 Permit No. 262 Northwest Coal Company**
 Permit No. 263 Allegheny Mining Corporation*
 Permit No. 264 Brashear Coal Company
 Permit No. 265 Bittering Coal Company
 Permit No. 266 Delta Mining, Inc.*

Permit No. 267 Bittering Coal Company*
 Permit No. 268 Clyde Marsh Coal Company
 Permit No. 269 Hungry Hollow Coal Company*
 Permit No. 270 Delta Mining, Inc.
 Permit No. 271 A&R Coal Company*
 Permit No. 272 Action Mining, Inc.
 Permit No. 273 Win-More Mining & Construction
 Permit No. 274 Evans Coal Company*
 Permit No. 275 Buffalo Coal Company, Inc.*
 Permit No. 276 Buffalo Coal Company, Inc.
 Permit No. 277 Allegheny Mining Corporation
 Permit No. 278 Inter-State Lumber Company*
 Permit No. 279 Buffalo Coal Company, Inc.
 Permit No. 280 Delta Mining, Inc.*
 Permit No. 281 Rondell Company*
 Permit No. 282 Phillips Coal, Inc.*
 Permit No. 283 G&H Coal Company, Inc.*
 Permit No. 284 Tower Resources, Inc.*
 Permit No. 285 Clinton Coal Company**
 Permit No. 286 T.G.&C. Coal Company
 Permit No. 287 T.L. Moran, Inc.
 Permit No. 288 Delta Mining, Inc.*
 Permit No. 289 Pine Mt. Coal Company
 Permit No. 290 Delta Mining, Inc.*
 Permit No. 291 George Nolan**
 Permit No. 292 Alexander Coal Co.*
 Permit No. 293 Pine Mt. Coal Company*
 Permit No. 294 Arlen Miller***
 Permit No. 295 Action Mining, Inc.
 Permit No. 296 Bessemer Iron & Coal Company*
 Permit No. 297 Oakland Coal Company
 Permit No. 298 Bittering Coal Company
 Permit No. 299 Inter-State Lumber, Inc.*
 Permit No. 300 Garbart Coal Company*
 Permit No. 301 Pine Mt. Coal Company*
 Permit No. 302 L.C. Coal Company, Inc.*
 Permit No. 303 Ginniman Brothers Coal Company**
 Permit No. 304 Buffalo Coal Company, Inc.*
 Permit No. 305 Wood Products, Inc.*
 Permit No. 306 Bridgeview Coal Company*
 Permit No. 307 T.L. Moran, Inc.*
 Permit No. 308 Best Coal Stripping, Inc.**
 Permit No. 309 Delta Mining, Inc.*
 Permit No. 310 Oakland Coal Company*
 Permit No. 311 Primrose Coal Company*
 Permit No. 312 R.A.K. Coal Company, Inc.**
 Permit No. 313 G&S Coal Company*
 Permit No. 314 Wilhelm Coal, Inc.
 Permit No. 315 Clise Coal Company
 Permit No. 316 Brawal Mining, Inc.*
 Permit No. 317 John R. Livingston**
 Permit No. 318 Winner Bros. Coal Company, Inc.
 Permit No. 319 John Duckworth Coal Company*
 Permit No. 320 Kelley Enterprises*

Permit No. 321 Delta Mining, Inc.*
 Permit No. 322 Bridgeview Coal Company*
 Permit No. 323 Ayers Coal Company
 Permit No. 324 John Duckworth Coal Company
 Permit No. 325 G&S Coal Company, Inc.
 Permit No. 326 Buffalo Coal Company, Inc.
 Permit No. 327 Buffalo Coal Company, Inc.*
 Permit No. 328 Buffalo Coal Company, Inc.
 Permit No. 329 Winner Bros. Coal Company, Inc.
 Permit No. 330 Inter-State Lumber Company
 Permit No. 331 R.A.K. Coal Company***
 Permit No. 332 Seneca Mining Company*
 Permit No. 333 Westvaco Resources, Inc.
 Permit No. 334 Buffalo Coal Company, Inc.
 Permit No. 335 Inter-State Lumber Company
 Permit No. 336 Inter-State Lumber Company*
 Permit No. 337 Commonwealth Coals, Inc.
 Permit No. 338 Oliver Mining Company
 Permit No. 339 Wilhelm Coal, Inc.*
 Permit No. 340 Fetterolf Mining, Inc.
 Permit No. 341 Eastern Mining Systems, Inc.**
 Permit No. 342 Primrose Coal Company*
 Permit No. 343 L.C. Coal Company
 Permit No. 344 Bridgeview Coal Company*
 Permit No. 345 Delta Mining, Inc.
 Permit No. 346 Inter-State Lumber Company*
 Permit No. 347 Kelley Enterprises*
 Permit No. 348 Schwinabart & Green, Joint Venture
 Permit No. 349 Wilhelm Coal, Inc.
 Permit No. 350 Bridgeview Coal Company
 Permit No. 351 Winner Bros. Coal Company, Inc.
 Permit No. 352 John Duckworth Coal Company
 Permit No. 353 Winner Bros. Coal Company, Inc.
 Permit No. 354 Brawal Mining, Inc.
 Permit No. 355 Hi-Note, Inc.
 Permit No. 356 G&S Coal Company, Inc.***
 Permit No. 357 Richard Duckworth Coal Company
 Permit No. 358 Bridgeview Coal Company
 Permit No. 359 Buffalo Coal Company, Inc.
 Permit No. 360 Buffalo Coal Company, Inc.
 Permit No. 361 Pamela Mines, Inc.**
 Permit No. 362 Alpha Mining, Inc.
 Permit No. 363 Pamela Mines, Inc.
 Permit No. 364 John Duckworth Coal Company
 Permit No. 365 G&S Coal Company, Inc.
 Permit No. 366 Buffalo Coal Company, Inc.
 Permit No. 367 Buffalo Coal Company, Inc.
 Permit No. 368 Winner Bros. Coal Company, Inc.
 Permit No. 369 Bittinger Coal Company
 Permit No. 370 Keystone Mt. Development Company
 Permit No. 371 Eagle Mining, Inc.
 Permit No. 372 John Duckworth Coal Company
 Permit No. 373 Commonwealth Coals, Inc.

Permit No. 374 Winner Bros. Coal Company, Inc.
 Permit No. 375 Win-More Mining & Construction Company
 Permit No. 376 Jones Coal, Inc.
 Permit No. 377 Oakland Coal Company
 Permit No. 378 Eagle Mining, Inc.***
 Permit No. 379 Masteller Coal Company
 Permit No. 380 Fairview Coal Company
 Permit No. 381 Richard Duckworth Coal Company
 Permit No. 382 Pine Mt. Coal Company
 Permit No. 383 Oakland Coal Company
 Permit No. 384 Evans Coal Company
 Permit No. 385 Jones Coal, Inc.
 Permit No. 386 Jones Mining, Inc.
 Permit No. 387 Hilltop Construction Company
 Permit No. 388 Fetterolf Mining, Inc.***
 Permit No. 389 Tower Resources, Inc.
 Permit No. 390 C.J. Merlo, Inc.
 Permit No. 391 Oak Springs Coal Company
 Permit No. 392 Westvaco Resources, Inc.
 Permit No. 393 C.J. Merlo, Inc.
 Permit No. 394 Action Mining, Inc.
 Permit No. 395 Stan-Jan Excavating, Inc.
 Permit No. 396 Oakland Coal Co.

DEEP MINES

Permit DM 101 Mettiki Coal Corporation
 Permit DM 102 Masteller Coal Company*
 Permit DM 103 Mt. Top Coal Company
 Permit DM 104 Mettiki Coal Corporation
 Permit DM 105 Mettiki Coal Corporation
 Permit DM 106 A&J Coal Corporation**
 Permit DM 107 Masteller Coal Company

TIPPLES AND GOB FILES

Permit SC-83-101 Buffalo Coal Company
 Permit SC-83-102 Buffalo Coal Company
 Permit SC-83-103 Buffalo Coal Company
 Permit SC-83-104 Buffalo Coal Company
 Permit SC-83-105 Buffalo Coal Company***
 Permit SC-83-106 Permit Not Issued
 Permit SC-83-107 Delta Coal Sales, Inc.
 Permit SC-83-108 Delta Coal Sales, Inc.
 Permit SC-83-109 Permit Not Issued
 Permit SC-83-110 Tower Resources, Inc.
 Permit SC-83-111 Westvaco Resources, Inc.
 Permit SC-83-112 Winner Bros. Coal Company
 Permit SC-83-113 Permit Not Issued
 Permit SC-83-114 Ever, Inc.
 Permit SC-83-115 Permit Not Issued

* Operation Completed and Bond Released
 ** Forfeiture of Bond
 *** Not Activated