

CALENDAR YEAR 1982
SIXTIETH ANNUAL REPORT
of the
MARYLAND BUREAU OF MINES



TO
HON. HARRY HUGHES
Governor of Maryland

DEPARTMENT OF NATURAL RESOURCES
TORREY C. BROWN, M.D., The Secretary

ENERGY ADMINISTRATION
PAUL MASSICOT, Administrator

From
MARYLAND BUREAU OF MINES
ANTHONY F. ABAR, Director

CALENDAR YEAR 1982
SIXTIETH ANNUAL REPORT
of the
MARYLAND BUREAU OF MINES



TO
HON. HARRY HUGHES
Governor of Maryland

DEPARTMENT OF NATURAL RESOURCES
TORREY C. BROWN, M.D., The Secretary

ENERGY ADMINISTRATION
PAUL MASSICOT, Administrator

From

MARYLAND BUREAU OF MINES

ANTHONY F. ABAR, Director

FOR THE CALENDAR YEAR 1982

STATE OF MARYLAND
DEPARTMENT OF NATURAL RESOURCES
ENERGY ADMINISTRATION
BUREAU OF MINES

FROSTBURG, MARYLAND 21532

LETTER OF TRANSMITTAL

To His Excellency

HONORABLE HARRY HUGHES

Governor of Maryland

Sir:

I have the honor to submit herewith the Sixtieth Annual Report of the Maryland Bureau of Mines for the period January 1, 1982 through December 31, 1982, in compliance with the Maryland Mining Law. This Report is the One Hundred Sixth Annual Report upon conditions of the coal mines within the State.

Very respectfully,

Anthony F. Abar

Director

FOR CALENDAR YEAR 1982

Anthony F. Abar Director
Stephen M. Layton Energy Resources Officer III
Fred L. Bagley Energy Resources Officer III
Alan V. Hooker Energy Resources Officer II
Jeffrey McCombs Energy Resources Officer I
Michael C. Manthos Energy Resources Officer I
Joseph Ruperto Energy Resources Officer I (9/82-12/82)
Richard A. Gardner Energy Resources Specialist III
P. Douglas Curtis District Mine Inspector
James E. Droppleman District Mine Inspector (1/82-3/82)
John C. Eilers District Mine Inspector
Chester L. Evans District Mine Inspector (1/82-11/82)
Joseph Mills District Mine Inspector
Raymond Karlstrand District Mine Inspector
Ruth D. Booth Office Supervisor
Mary E. Cameron Office Secretary II
Dorothy E. Roberson Office Secretary I

FOR CALENDAR YEAR 1982

REPORT OF THE MARYLAND BUREAU OF MINES

Coal production in Maryland during 1982 totalled 3,459,891.66 tons. Production for 1982 represents a decrease of 991,667.65 tons from the 1981 production of 4,451,559.31 tons.

SUMMARY OF 1982 STATISTICS¹

COAL PRODUCTION

Mining Method	Allegany County	Garrett County	Total	%
Strip	812,993.63	1,051,523.96	1,864,517.59	54%
Deep	0	1,587,428.07	1,587,428.07	45%
Auger	1,109.00	6,837.00	7,946.00	1%
TOTALS . .	814,102.63	2,645,789.03	3,459,891.66	100%

EMPLOYEES¹

Type of Mine	Allegany County	Garrett County	Total	Fatalities
Deep	0	696	696	0
Strip	255	282	537	0
TOTALS ² . .	255	978	1,233	0

Allegany County shows a production of 3,192.55 net tons per man employed during 1982.

Garrett County shows a production of 2,705.3 net tons per man employed during 1982.

¹Reports submitted by Maryland mining operators.

²These figures do not include office, supervisory personnel or independent truck haulers.

FOR CALENDAR YEAR 1982

TONNAGE BY COAL SEAMS

Allegheny County

Waynesburg	175,419.77
Sewickley (Tyson)	64,477.90
Redstone	48,918.56
Pittsburgh	303,938.89
Morantown	24,711.32
L. Pittsburgh	6,137.15
Franklin	28,965.81
Harlem	5,395.44
Bakerstown	48,632.76
Freeport	98,633.24
Kittanning	<u>8,871.79</u>
TOTAL	814,102.63

Garrett County

Sewickley	2,209.00
Pittsburgh	137,075.80
Morantown	3,552.05
L. Pittsburgh	42,997.00
Franklin	97,225.00
Barton	88,653.00
Elk Lick	109,323.95
Harlem	43,833.00
Bakerstown	268,478.01
Brush Creek	5,435.21
Freeport	1,702,565.73
Kittanning	<u>144,441.28</u>
TOTAL	2,645,789.03

TONNAGE BY BASIN

Lower Youghiogheny	217,212.83
Upper Youghiogheny	0
Casselman	141,544.79
Casselman (Cherry Creek)	71,837.74
Potomac	1,899,649.72
George's Creek	<u>1,129,646.58</u>
TOTAL	<u>3,459,891.66</u>

STATISTICS OF COAL PRODUCTION, CALENDAR YEAR 1982
FOR ALLEGANY COUNTY

Name of Operator	Permit Number	Coal Seam Worked	Employees	Days Worked	Man-Hour Exposure	TONNAGE			ACRES			
						Deep	Strip	Auger	Stripped	Backfilled	Planted	Approved
Alpha Mining	362	Pittsburgh	2	196	2,832	5,932.42			3	3	3	0
		Morantown	--	--	--	1,122.40			--	--	--	--
		Redstone	--	--	--	601.15			--	--	--	--
Ayers Coal Company	323	Franklin	2	228	1,540	1,529.00			0	2.5	4.5	0
	296	Bakerstown	1	199	5,577	1,327.70			1	0	0	9.4
Brashear Coal Mines	264	Franklin	9	294	18,463.5	13,966.55			8	5	5	3.2
		Pittsburgh	--	--	--	12,166.70			--	--	--	--
		L. Pittsburgh	--	--	--	6,137.15			--	--	--	--
Buffalo Coal Company		Morantown	--	--	--	3,577.65			--	--	--	--
	241	Pittsburgh	0	0	0	N.P.			0	0	0	7
	276	Pittsburgh	0	0	0	N.P.			2	0	0	0
	279	Pittsburgh	0	0	0	N.P.			4	29	29	0
	326	Pittsburgh	17	161	21,552	29,778.00			14	3	3	0
	327	Pittsburgh	0	0	0	COMPLETED			0	0	0	35
	328	Sewickley	11	172	15,736	21,503.00			16	0	0	0
	334	Franklin	0	0	0	N.P.			1	5	6.5	0
	359	Pittsburgh	3	49	1,136	586.00			6	0	0	0

STATISTICS OF COAL PRODUCTION, CALENDAR YEAR 1982
FOR ALLEGANY COUNTY

Name of Operator	Permit Number	Coal Seam Worked	Employees	Days Worked	Man-Hour Exposure	TONNAGE			ACRES			
						Deep	Strip	Auger	Stripped	Backfilled	Planted	Approved
Clisee Coal Company	234	Sewickley	1	1	8		N.P.		0	7	10	0
	315	Sewickley	4	249	8,443		8,132.90		3	8	8	13
		Waynesburg	--	--	--		2,371.90		--	--	--	--
Commonwealth Coal Co.	337	Redstone	8	218	11,802		15,120.54		3.5	9	4.5	0
		Pittsburgh	--	--	--		14,966.94		--	--	--	--
		Morantown	--	--	--		11,429.69		--	--	--	--
Delta Mining, Inc.	373	Pittsburgh	4	64	2,048		3,694.77		9	0	0	0
		Morantown	--	--	--		949.19		--	--	--	--
	213	Waynesburg	24	278	46,158		108,688.19		41	33	33	0
John Duckworth Coal Co.	270	Waynesburg	1	76	1,008.5		2,429.35		0	0	0	4.4
	324	Pittsburgh	2	25	400		509.65		0	4.5	4.5	0
	352	Pittsburgh	7	247	10,328		42,594.82		8	5.7	4.3	0
Richard Duckworth Coal Company	372	Pittsburgh	2	52	1,000		2,678.42		5	0	0	0
	357	Bakerstown	3	172	5,192		12,142.38		3	7.5	27.5	0
	381	Bakerstown	3	13	312		344.70		1.5	0	0	0
Eckhart Coal Company	184	Franklin	3	219	3,968			1,029.00	0	17	17	11
Evans Coal Company	274	Pittsburgh	3	100	2,080		530.86		0	2	18	9

STATISTICS OF COAL PRODUCTION, CALENDAR YEAR 19 82
FOR ALLEGANY COUNTY

Name of Operator	Permit Number	Coal Seam Worked	Employees	Days Worked	Man-Hour Exposure	TOURNAGE				ACRES			
						Deep	Strip	Auger	Stripped	Backfilled	Planted	Approved	
Fairview Coal Company	380	Pittsburgh	1	43	160		2,179.00		1.2	0	0	0	0
G. & H Coal Company	230	Harlem	0	0	0		COMPLETED		0	0	0	0	6
Hi-Note, Inc.	231	Pittsburgh	8	286	14,593		49,607.10		12	8.5	8.5	3.5	3.5
Marsh Coal Company	268	Pittsburgh	10	308	21,187		13,115.60		10	5.5	6.5	5	5
		Bakerstown	--	--	--		10,057.71		--	--	--	--	--
		Morantown	--	--	--		5,107.75		--	--	--	--	--
		Redstone	--	--	--		1,545.70		--	--	--	--	--
		Sewickley	--	--	--		111.90		--	--	--	--	--
T.G.&C. Coal Co., Inc.	286	Sewickley	5	169	7,814.75		5,127.50	80.00	0	0	0	0	0
		Waynesburg	--	--	--		4,755.57		--	--	--	--	--
	318	Sewickley	3	74	2,033		2,143.60		19	0	0	43	43
	374	Waynesburg	7	159	9,179.75		18,955.76		18	0	0	0	0
Tower Resources, Inc.	251	Waynesburg	5	141	5,699		N.P.		0	115	115	14	14
	259	Franklin	0	0	0		COMPLETED		0	0	0	40	40
	284	Freeport	6	317	15,417		43,777.36		65	82	77	0	0
		Bakerstown	--	--	--		24,760.27		--	--	--	--	--
		Kittanning	--	--	--		8,871.79		--	--	--	--	--
		Harlem	--	--	--		286.34		--	--	--	--	--

STATISTICS OF COAL PRODUCTION, CALENDAR YEAR 1982
FOR ALLEGANY COUNTY

Name of Operator	Permit Number	Coal Seam Worked	Employees	Days Worked	Man-Hour Exposure	TONNAGE			ACRES			
						Deep	Strip	Auger	Stripped	Backfilled	Planted	Approved
Tower Resources, Inc.	371	Freeport	15	101	10,635		54,855.88		26	0	0	0
Union Coal Company	233	Pittsburgh	12	196	18,816		18,947.97		15	10.9	10.9	0
		Redstone	--	--	--		18,947.97		--	--	--	--
	338	Franklin	10	94	7,520		12,441.26		0	2	2	31
Wilhelm Coal, Inc.	339	Bakerstown	0	0	0		N.P.		0	0	3	0
	355	Harlem	6	172	6,935		5,109.10		22	14	14	0
Win-More Mining & Construction Co.	273	Pittsburgh	5	230	8,928		6,024.64		4	7	7	0
		Redstone	--	--	--		4,625.20		--	--	--	--
		Morantown	--	--	--		2,524.64		--	--	--	--
	375	Pittsburgh	0	0	0		N.P.		1.5	0	0	0
Winner Bros. Coal Co.	40	Redstone	4	154	4,709		3,135.00		0	0	0	0
	182	Pittsburgh	0	0	0		N.P.		3	0	0	0
	202	Sewickley	2	22	239		234.00		0	0	0	5
	207	Pittsburgh	16	264	36,096		71,848.00		6	0	0	11
		Sewickley	--	--	--		27,145.00		--	--	--	--
	247	Pittsburgh	5	264	10,038		14,310.00		10	0	0	8
	329	Redstone	7	132	6,398		4,943.00		0	0	0	0
	351	Waynesburg	9	264	19,202		28,950.00		19	0	0	0

STATISTICS OF COAL PRODUCTION, CALENDAR YEAR 1982
FOR GARRETT COUNTY

Name of Operator	Permit Number	Coal Seam Worked	Employees	Days Worked	Man-Hour Exposure	Deep	TONNAGE			ACRES		
							Strip	Auger	Stripped	Backfilled	Planted	Approved
Action Mining, Inc.	295	Kittanning	2	99	2,124		7,221.00		16	0	0	0
	272	Freeport	3	240	6,795		22,431.00	617.00	0	0	0	15
Allegheny Mining	277	Freeport	19	252	35,152		56,733.00		27	0	0	16
	143	Pittsburgh	13	299	30,210		114,226.35		21	29	29	0
Best Coal Stripping	308	Freeport	8	119	5,762.5		3,093.27		0	0	0	0
	265	Freeport	0	0	0		N.P.		0	0	0	14.1
Bittering Coal Co.	369	Brush Creek	4	204	11,011		5,395.46		3	14.4	14.4	0
	316	Kittanning	0	0	0		N.P.		0	40	40	0
Brawal Mining, Inc.	354	Kittanning	0	0	0		N.P.		0	23.5	23.5	0
	215	Bakerstown	9	148	12,256		21,241.00		10	0	0	13.5
Buffalo Coal Co.	240	Freeport	18	148	21,321		43,312.00		9	63.8	0	55
	360	Freeport	9	148	12,016		34,682.00		32.5	17.4	0	0
Cobra Fuels, Inc.	366	Barton	16	196	22,808		80,919.00		79	29	29	0
	367	(in WV)	0	0	0		Area of mineral extraction is entirely in the State of West Virginia		5	0	0	0
Delta Mining, Inc.	304	Mahoning	0	0	0		N.P.		0	0	0	9
	249	Freeport	0	0	0		N.P.		0	0	0	10
Delta Mining, Inc.	224	Harlem	0	0	0		COMPLETED		0	0	0	2
	266	Brush Creek	0	0	0		COMPLETED		0	0	0	4
	209	Brush Creek	0	0	0		COMPLETED		0	0	0	5

STATISTICS OF COAL PRODUCTION, CALENDAR YEAR 1982
FOR GARRETT COUNTY

Name of Operator	Permit Number	Coal Seam Worked	Employees	Days Worked	Man-Hour Exposure	TONNAGE			ACRES			
						Deep	Strip	Auger	Stripped	Backfilled	Planted	Approved
Delta Mining, Inc.	288	Harlem	0	0	0		COMPLETED		0	0	0	20
	321	Brush Creek	0	0	0		COMPLETED		0	0	0	20
	280	Brush Creek	2	23	455		39.75		1	20	20	0
	309	Bakerstown	2	65	1,168		COMPLETED		0	22	22	13
	345	Freeport	14	253	24,013.5		68,852.04		49	34	34	0
G&S Coal Company	137	Kittanning	0	0	0		N.P.		3	0	0	45
	325	Barton	2	100	1,600		7,734.00		14	0	0	3
	365	Freeport	16	251	26,128		32,714.00	6,220.00	11	0	0	0
Highland Mining Interstate Lumber Co.	239	Freeport	0	0	0		N.P.		0	5	5	12
	299	Bakerstown	0	0	0		COMPLETED		0	0	0	41.6
	335	Bakerstown	32	308	82,284		172,302.95		0	26	26	4
	336	Bakerstown	0	0	0		COMPLETED		0	32.5	32.5	5.5
Jones Coal Company	346	Bakerstown	0	0	0		COMPLETED		0	0	0	4.5
	376	Kittanning	4	180	6,965		39,273.33		25	0	0	0
Kelley Enterprises	347	Harlem	0	0	0		COMPLETED		0	0	0	14
	370	Mahoning	0	0	0		COMPLETED		6	4.6	4.6	0
L.C. Coal Company	343	Bakerstown	8	167	8,399.75		9,708.99		4	10	10	5.25
	379	Bakerstown	2	23	514		3,532.00		11	0	0	0
Masteller Coal Co.	DM102	Kittanning	31	95	26,630		84,060.85		0	14	14	0

STATISTICS OF COAL PRODUCTION, CALENDAR YEAR 1982

FOR GARRETT COUNTY

Name of Operator	Permit Number	Coal Seam Worked	Employees	Days Worked	Man-Hour Exposure	TONNAGE			ACRES			
						Deep	Strip	Auger	Stripped	Backfilled	Planted	Approved
Masteller Coal Co.	DM107	Elk Lick	38	155	69,445	109,323.95			0	0	0	0
Mettiki Coal Corp.	DM101	Freeport	283	224	523,993.25	457,478.47			0	0	0	0
	DM104	Freeport	168	224	300,228	447,415.49			0	0	0	0
	DM105	Freeport	167	224	300,903.25	475,263.21			0	0	0	0
Mt. Top Coal Company	DM103	Kittanning	9	102	5,805	13,886.10			0	0	0	0
E.S. Moran Coal Co.	364	Bakerstown	5	248	9,536	18,770.65			16	0	0	0
T.L. Moran, Inc.	307	Freeport	0	0	0	COMPLETED			0	0	0	16
Oakland Coal Company	173	Harlem	10	250	18,422	30,886.00			11.7	22.6	11.5	0
	297	Freeport	4	245	6,576	22,880.00			7	0	0	0
	310	Harlem	9	136	9,127	12,947.00			0	39.1	47.9	13.9
	377	Freeport	9	114	7,528	14,274.00			20	0	0	0
Pamela Mines, Inc.	363	Pittsburgh	3	30	1,558.5	4,419.45			5.4	5	5	0
		Morantown	--	--	--	3,552.05			--	--	--	--
	361	Waynesburg	0	0	0	N.P.			15	0	0	0
Pine Mt. Coal Co.	289	Freeport	2	191	3,056	10,963.70			3	0	0	0
Schwinabart & Green	348	Bakerstown	5	252	10,080	19,504.00			8	0	0	0
Upperman Coal Company	206	Bakerstown	4	37	1,184	4,990.00			9.6	9.9	0	0

FOR CALENDAR YEAR 1982
SUMMARY OF LAND MINED, BACKFILLED, AND PLANTED IN 1982
(By Geological Basin)

Table No. 1

	ACRES THIS YEAR*						Planted	Revegetation Bond Released	Final Reports
	Acres Approved By LRC	Permitted	Stripped	Backfilled					
Allegheny County:									
George's Creek Basin	651.3	641.9	373.7	386.1	421.7	258.5	5		
Garrett County:									
George's Creek Basin	26	5	82.4	73.2	96.4	18	1		
Potomac River Basin	539	380	231.8	195.8	102.4	155.4	2		
Casselman River Basin**	0	5	81	139.5	139.5	80	4		
Cherry Creek Basin**	42	38	34	29.4	29.4	76.35	0		
Upper Yough Basin	0	0	0	0	0	10	0		
Lower Yough Basin	152	66	41	72.1	72.1	57.6	2		
TOTAL GARRETT COUNTY	759.0	494.0	470.2	510.0	441.8	397.35	9		
TOTAL BOTH COUNTIES	1,410.3	1,135.9	843.9	896.1	863.5	655.85	14		

Table No. 2

ACRES CUMULATIVE FROM JANUARY 1, 1975 — DECEMBER 31, 1982

Allegheny County:								
George's Creek Basin	5,754.18	4,949.2	3,218.8	2,432.07	2,450.6	1,933.3	30	
Garrett County:								
George's Creek Basin	1,274	1,097	1,076.8	814	1,087.3	911.4	6	
Potomac River Basin	2,533	2,229	1,456.2	1,396.1	1,616.5	1,884.2	17	
Casselman River Basin**	1,406.3	1,175	861	923.1	819.9	596	17	
Cherry Creek Basin**	574	662	572.9	413.4	403.8	392.75	8	
Upper Yough Basin	253	214	138.7	149.35	138.3	165.9	3	
Lower Yough Basin	1,110.5	1,209	759	963.86	872.96	570.9	23	
TOTAL GARRETT COUNTY	7,150.8	6,586.0	4,864.6	4,659.81	4,938.76	4,521.15	74	
TOTAL BOTH COUNTIES	12,904.98	11,535.2	8,083.4	7,091.88	7,389.36	6,454.45	104	

* Where difference occurs between Approved and Permitted, either Permit was approved in 1981 and not issued until 1982, or Permit was not issued.

** Both Casselman Geological Basin.

Table No. 3

FOR CALENDAR YEAR 1982

SUMMARY OF MINING AND RECLAMATION STATISTICS

1975 — 1982

	1975	1976	1977	1978	1979	1980	1981	1982	Cumulative Total
New Surface Mine Licenses Issued	20	12	13	9	8	6	10	8	86
New Surface Mine Permits Issued	37	19	25	20	7	19	0	11	138
New Deep Mine Permits Issued	0	0	1	5	0	0	0	1	7
A.M. & R.P.R. Processed	92	111	135	156	139	111	100	99	943
Amended Permits Processed	62	38	36	24	8	19	11	15	213
Forfeitures	0	0	0	1	4	5	1	0	11
Permits Completed and Planted	16	3	19	17	19	15	16	16	121
Site Evaluation Committee Days	23	28	32	23	22	25	22	31	206
Land Reclamation Committee Days	14	12	11	13	9	11	9	12	91

FOR THE CALENDAR YEAR 1982

LAND RECLAMATION COMMITTEE

Members:

The following members served on the Land Reclamation Committee during 1982:

DEPARTMENT OF NATURAL RESOURCES REPRESENTATIVES:

Kenneth N. Weaver (Chairman), Maryland Geological Survey
Stephen M. Layton, Maryland Bureau of Mines
Paul Mateer, Maryland Forest Service
Ed Golden, Maryland Wildlife Administration

DEPARTMENT OF HEALTH AND MENTAL HYGIENE REPRESENTATIVE:

Robert V. Creter, Office of Environmental Programs

CITIZENS' REPRESENTATIVES:

June Neder, Allegany County
Hugh Trimble, Garrett County

COUNTY PLANNING & ZONING REPRESENTATIVES:

Tim Carney, Allegany County
Francis Pope, Garrett County

SOIL CONSERVATION DISTRICT REPRESENTATIVES:

Craig Hartsock, Allegany
Shaun Sanders, Garrett

COAL INDUSTRY REPRESENTATIVES:

John E. Carey
James M. Coffroth

Meetings and Time:

The Land Reclamation Committee meets at the Bureau of Mine's Office in Frostburg, Maryland. All meetings are open to the public and are announced in the Maryland Register and local papers.

FOR CALENDAR YEAR 1982

Functions and Duties of the Committee:

The Land Reclamation Committee oversees land reclamation activities related to the surface mining of coal in Maryland. It is directed by statute (Annotated Code of Maryland, Natural Resources Article, §7-205/b/) to: "... study, recommend, and approve all procedures for reclamation, conservation and revegetation of any area affected by open pit mining within the State"

Specific duties addressed by the Committee during its monthly meetings include:

1. Review and approval of reclamation plans;
2. Review and approval of Annual Mining & Reclamation Progress Reports, Final Reports, and revegetation bond releases;
3. Establish amounts of revegetation bond for each operation.

The Land Reclamation Committee visits sites for which mining permit applications have been submitted/approved to: (1) determine the suitability of the proposed reclamation plan; (2) review annual mining and reclamation progress; and (3) evaluate revegetation.

FOR CALENDAR YEAR 1982

REVEGETATION OF STRIP MINED LANDS

The Land Reclamation Committee (LRC) voted to release 656 acres of reclaimed surface coal mined land from a total of 892 acres eligible for revegetation bond release during 1982. This action was taken after consideration of 76 planting reports filed by 39 coal companies.

The criteria that must be met prior to release of bonds are as follows:

1. Herbaceous cover must be at least 90% of the eligible acres;
2. Bare areas cannot exceed 900 square feet;
3. Permanent legumes, well distributed, must comprise at least 10% of the coverage;
4. Erosion rills and gullies cannot exceed 9 inches in depth;
5. There are no depressions and/or seeps in the area; and
6. If trees and shrubs are planted, at least 600 well distributed and living stems must exist per acre.

Longer evaluation time may be required, even if an area meets these criteria, if the health conditions of the vegetation are questionable.

All reclaimed acres were planted with a grass and legume mixture to insure adequate erosion control protection. In addition to herbaceous cover, trees and/or shrubs were planted on 243 acres.

FOR CALENDAR YEAR 1982

The principal reason for disapproval of 236 acres was failure to meet the permanent legume requirement. The permanent legume is very important in sustaining the vegetative cover if the land is not managed after bond release.

The LRC also voted to reduce the revegetation bond on 82 acres. This is the first year revegetation bonds have been reduced--in response to the five year revegetation bond holding provision that applies to mining permits issued by the Bureau since July 1, 1979. Revegetation bonds may be reduced after two growing seasons to an amount not less than fifty percent of the total revegetation bond amount if release criteria are met.



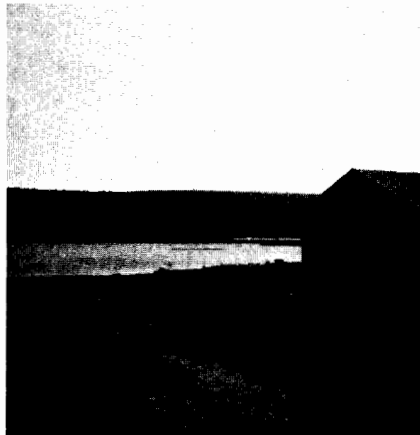
A reclaimed mining site showing trees for forestry purposes.

A listing of the acres eligible for revegetation bond release is compiled during January of each year, and is available

FOR CALENDAR YEAR 1982

upon request from the Bureau of Mines. This list is published in newspapers in Allegany and Garrett Counties once during the spring and once a week for four consecutive weeks during October or November.

The Bureau is available to conduct tours of reclaimed lands to demonstrate the results of reclamation and revegetation practices and requirements in the State.



A strip mined area reclaimed for recreation purposes. Davies Lake near Grantsville, Maryland.

FOR CALENDAR YEAR 1982
SUMMARY OF LAND MINED, BACKFILLED, AND PLANTED IN 1982
(By Geological Basin)

Table No. 1

	ACRES THIS YEAR*						Planted	Revegetation Bond Released	Final Reports
	Approved By L.R.C.	Permitted	Stripped	Backfilled	Planted	Revegetation Bond Released			
Allegheny County:									
George's Creek Basin	651.3	641.9	373.7	386.1	421.7	258.5	5		
Garrett County:									
George's Creek Basin	26	5	82.4	73.2	98.4	18	1		
Potomac River Basin	539	380	231.8	195.8	102.4	155.4	2		
Casselman River Basin**	0	5	81	139.5	139.5	80	4		
Cherry Creek Basin**	42	38	34	29.4	29.4	76.35	0		
Upper Yough Basin	0	0	0	0	0	10	0		
Lower Yough Basin	152	66	41	72.1	72.1	57.6	2		
TOTAL GARRETT COUNTY	759.0	494.0	470.2	510.0	441.8	397.35	9		
TOTAL BOTH COUNTIES	1,410.3	1,135.9	843.9	896.1	863.5	655.85	14		

Table No. 2

ACRES CUMULATIVE FROM JANUARY 1, 1975 -- DECEMBER 31, 1982

Allegheny County:								
George's Creek Basin	5,754.18	4,949.2	3,218.8	2,432.07	2,450.6	1,933.3	30	
Garrett County:								
George's Creek Basin	1,274	1,097	1,076.8	814	1,087.3	911.4	6	
Potomac River Basin	2,533	2,229	1,456.2	1,396.1	1,616.5	1,884.2	17	
Casselman River Basin**	1,406.3	1,175	861	923.1	819.9	596	17	
Cherry Creek Basin**	574	662	572.9	413.4	403.8	392.75	8	
Upper Yough Basin	253	214	138.7	149.35	138.3	165.9	3	
Lower Yough Basin	1,110.5	1,209	759	963.86	872.96	570.9	23	
TOTAL GARRETT COUNTY	7,150.8	6,586.0	4,864.6	4,659.81	4,938.76	4,521.15	74	
TOTAL BOTH COUNTIES	12,904.98	11,535.2	8,083.4	7,091.88	7,392.36	6,454.45	104	

* Where difference occurs between Approved and Permitted, either Permit was approved in 1981 and not issued until 1982, or Permit was not issued.

** Both Casselman Geological Basin.

FOR CALENDAR YEAR 1982

Abandoned Mine Reclamation Projects

A total of 26 acres of abandoned mine lands were reclaimed under five different contracts. The majority of the reclamation work involved backfilling abandoned surface mines to approximate original contour and revegetating all disturbed areas. However, one project involved excavating deep mine refuse, transporting fill material to the site, channelizing deep mine drainage to an existing drainway, regrading, and revegetating the site. The total of these five contracts was \$58,450. The fund source for these contracts is the Bituminous Coal Open-Pit Mining Reclamation Fund. This fund is derived from a 15¢ per ton of coal mined reclamation surcharge and a \$40 per acre of land mined reclamation fee paid by the coal operators.

Project Number	Total Acres Reclaimed	Total Cost of Reclamation	County Location and Election District	Completion Date of Reclamation
M61-81S	6	\$ 9,600	Garrett County, E.D. No. 14	5/05/82
M56-80S	8	\$ 8,000	Allegany County, E.D. No. 17	5/14/82
M79-82S	4	\$15,000	Allegany County, E.D. No. 10	8/31/82
M77-82S	7	\$ 9,850	Allegany County, E.D. No. 9	10/22/82
F-012-811-010	1	\$16,000	Garrett County, E.D. No. 14	11/18/82

FOR CALENDAR YEAR 1982

DEEP MINE

MINE FOREMAN AND FIRE BOSS
EXAMINATIONS AND CERTIFICATIONS

The number of Mine Foremen and Fire Boss examinations conducted from 1974 through 1982 are identified below.

YEAR	APPLICANTS EXAMINED		APPLICANTS CERTIFIED	
	Mine Foremen	Fire Boss	Mine Foremen	Fire Boss
1982	11	60	7	20
1981	0	0	0	0
1980	8	36	3	21
1979	14	28	12	26
1978	30	16	22	16
1977	0	0	0	0
1976	11	0	11	0
1975	0	0	0	0
1974	2	0	1	0

FOR CALENDAR YEAR 1982

COMPARATIVE ACCIDENT REPORT

Year	Man-Hours Exposure	Tons Produced	Fatals	Lost Time Accidents	Frequency	Fatals Per Million Man-Hours	Fatals Per Million Short Tons	Non-Fatal Per Million Man-Hours	Non-Fatal Per Million Short Tons	Fatals Per Tons	Non-Fatal Per Tons
1982	2,085,157.75	3,459,891.66	0	5	28.77	0	0	28.77	17.34	0	57,664.86
1981	2,218,325.69	4,451,559.31	0	82	45.07	0	0	45.07	22.46	0	44,515.59
1980	2,089,982.5	3,760,092.25	0	61	35.4	0	0	35.4	19.68	-	50,812.05
1979	1,855,326.73	2,716,617.07	3	29	31.8	1.61	1.1	31.8	21.71	905,539.02	46,044.35
1978	1,429,612	2,851,321.89	1	24	16.78	.69	.35	16.78	8.06	2,851,321.89	123,970.51
1977	1,373,626.25	3,028,629.66	0	15	10.9	N.A.	0	10.9	4.95	-	201,908.64
1976	1,287,997.5	2,695,178.96	0	4	3.1	N.A.	0	3.1	1.48	-	673,794.74
1975	981,372	2,520,765.27	1	5	5.09	1.01	.39	5.09	1.98	2,520,765.27	504,153.05
1974	697,707.5	2,221,412.94	1	0	N.A.	1.4	.43	0	0	2,221,412.94	N.A.
1973	541,210	1,754,130.93	0	3	5.7	0	0	5.7	1.14	1,754,130.93	584,710.31
1972	520,285	1,638,418.46	0	5	9.61	0	0	9.61	3.05	1,638,418.46	327,683.69
1971	806,056	1,591,677.20	0	6	7.44	0	0	7.44	3.77	1,591,677.20	265,279.53

FOR THE CALENDAR YEAR 1982

ACCIDENT REPORT

COMPANY	PERMIT NUMBER	NUMBER OF NON-FATAL ACCIDENTS	WORKING DAYS LOST	FATAL ACCIDENTS	ACCIDENT RATE
Allegheny Mining	277	2	0	0	56.89
G & S Coal Co.	365	1	0	0	38.27
L. C. Coal Company	343	2	13	0	238.1
Mettiki Coal Co.	DMI01	18	518	0	34.35
	DMI04	16	587	0	53.29
	DMI05	12	107	0	39.88
Tower Resources	Tipple	1	0	0	--
	251	1	0	0	175.46
	284	5	0	0	324.31
	371	2	3	0	188.05

FOR CALENDAR YEAR 1982

Permit No.	1	The George's Creek Lumber Company*
Permit No.	2	Allegany Engineering Company*
Permit No.	3	B.M.W. Coal Company*
Permit No.	4	Old Hampshire Coal Company, Inc.*
Permit No.	5	Car and Gotfelty Construction Co.*
Permit No.	6	M.H. Bigan Coal Company*
Permit No.	7	Moran Coal Company*
Permit No.	8	Allegany Engineering Company*
Permit No.	9	Schell Mining Company, Inc.*
Permit No.	10	B & U Coal Company*
Permit No.	11	Morgan Contracting Company**
Permit No.	12	Romadale Coal Corporation*
Permit No.	13	Cross Fuel Company*
Permit No.	14	Highland Construction Company*
Permit No.	15	Phoenix Big Vein Coal Company (Repermitted 338)
Permit No.	16	Moran Coal Company*
Permit No.	17	T.J. Cramblett**
Permit No.	18	Moscow-Georges Creek Coal Company*
Permit No.	19	J.R. Thrasher Contracting & Stripping Co.*
Permit No.	20	Moran Coal Company (Repermitted 333)*
Permit No.	21	Schell Mining Company, Inc.**
Permit No.	22	Savage Coal Company*
Permit No.	23	Moran Coal Company*
Permit No.	24	The Georges Creek Coal & Land Co.*
Permit No.	25	Charles T. Clise*
Permit No.	26	Allegany Engineering Company*
Permit No.	27	Goodwill Fuel Company*
Permit No.	28	D.B. & B. Coal Company*
Permit No.	29	Queen George's Creek Coal Company**
Permit No.	30	Mack Coal Company**
Permit No.	31	White Crest Coal Company, Inc.**
Permit No.	32	D.B. & B. Coal Company*
Permit No.	33	Moran Coal Company*
Permit No.	34	Chelsie A. Liller*
Permit No.	35	J.E. George Trucking Co.**
Permit No.	36	D.B. & B. Coal Company*
Permit No.	37	J. & M. Coal Company**
Permit No.	38	Casey Construction Company**
Permit No.	39	Moran Coal Company*
Permit No.	40	Winner Bros. Coal Company, Inc.
Permit No.	41	Buffalo Coal Company, Inc.*
Permit No.	42	Casey Construction Company**
Permit No.	43	Sara-Ki Coal Company, Inc.*
Permit No.	44	Yantus & Zubek Coal Company*
Permit No.	45	Moran Coal Company*
Permit No.	46	Casey Construction Company**
Permit No.	47	Moran Coal Company*
Permit No.	48	Moran Coal Company*
Permit No.	49	Sara-Ki Coal Company, Inc.*
Permit No.	50	Laurel Creek Company, Inc.**
Permit No.	51	D.B. & B. Coal Company**

FOR CALENDAR YEAR 1982

Permit No. 52	Moon and Sons*
Permit No. 53	George L. Smith Contracting Company*
Permit No. 54	The Georges Creek Lumber Company*
Permit No. 55	Moran Coal Company*
Permit No. 56	North Branch Coal Corporation*
Permit No. 57	George Coal Company**
Permit No. 58	Samuel Compton & Company**
Permit No. 59	Hoover & White*
Permit No. 60	Laurel Creek Company, Inc.**
Permit No. 61	The Eddy Fuel Company**
Permit No. 62	J.R. Thrasher Contracting & Stripping Co.*
Permit No. 63	Pittsburgh Coal Company*
Permit No. 64	Mineral Coal Company, Inc. of West Virginia
Permit No. 65	Laurel Creek Company, Inc.*
Permit No. 66	The Georges Creek Lumber Company*
Permit No. 67	Chelsie A. Liller*
Permit No. 68	Casey Contracting Company**
Permit No. 69	Pine Mountain Coal Company*
Permit No. 70	Opel and Brenneman*
Permit No. 71	The Georges Creek Lumber Company*
Permit No. 72	P. & J. Coal Company*
Permit No. 73	Casey Contracting Company**
Permit No. 74	Goodwill Fuel Company*
Permit No. 75	D.B. & B. Coal Company*
Permit No. 76	Baughman Contracting Company, Inc.*
Permit No. 77	P & K Coal Company*
Permit No. 78	Morgan Contracting Company*
Permit No. 79	Buffalo Coal Company, Inc.*
Permit No. 80	Buffalo Coal Company, Inc.*
Permit No. 81	Randall Robertson*
Permit No. 82	Hoover & White**
Permit No. 83	James E. George*
Permit No. 84	B.M.W. Coal Company, Inc.*
Permit No. 85	Casey Contracting Company**
Permit No. 86	Beener Coal Company*
Permit No. 87	Moran Coal Company, Inc.*
Permit No. 88	D & K Coal Company*
Permit No. 89	Brenneman Brothers*
Permit No. 90	Mack Coal Company*
Permit No. 91	Clarence Rodamer*
Permit No. 92	James E. George*
Permit No. 93	Casey Contracting Company**
Permit No. 94	Winner Brothers*
Permit No. 95	Moran Coal Company, Inc.*
Permit No. 96	Big Vein Coal Company*
Permit No. 97	Maryland Fuel Company, Inc.*
Permit No. 98	Yantus-Zubek Coal Company*
Permit No. 99	J.R. Thrasher Contracting & Stripping Co.*
Permit No. 100	Trefall Bros., Inc.*
Permit No. 101	Mack Coal Company*
Permit No. 102	C.A. Liller Coal Company*

FOR CALENDAR YEAR 1982

Permit No. 103	Cross & Brumage Coal Company*
Permit No. 104	Beener Coal Company*
Permit No. 105	D & K Coal Company*
Permit No. 106	Mack Coal Company*
Permit No. 107	Yantus and Zubek*
Permit No. 108	Potomac Mining Company*
Permit No. 109	Casey Contracting Company*
Permit No. 110	Wilhelm Coal Company*
Permit No. 111	The Georges Creek Lumber Company*
Permit No. 112	Clark Coal Company*
Permit No. 113	Casey Contracting Company*
Permit No. 114	Casey Contracting Company*
Permit No. 115	Douglas Coal Company*
Permit No. 116	Red Lion Mining Corporation**
Permit No. 117	Ebensburg Coal and Clay Company*
Permit No. 118	James E. George*
Permit No. 119	Ebensburg Coal and Clay Company*
Permit No. 120	J.R. Thrasher Contracting & Stripping Co.
Permit No. 121	Moran Coal Company, Inc.*
Permit No. 122	Buffalo Coal Company, Inc.*
Permit No. 123	J.R. Thrasher Contracting and Stripping Co.*
Permit No. 124	Win-More Mining & Construction Co., Inc.*
Permit No. 125	Beener Coal Company*
Permit No. 126	W.R. Nethken and Company, Inc.*
Permit No. 127	Mack Coal Company*
Permit No. 128	J.R. Thrasher Contracting and Stripping Co.*
Permit No. 129	J. Russell Cravener*
Permit No. 130	Chelsie A. Liller*
Permit No. 131	The Georges Creek Lumber Company*
Permit No. 132	Brenneman Brothers*
Permit No. 133	W.R. Nethken and Company, Inc.*
Permit No. 134	Richards and Parnell Coal Company*
Permit No. 135	William Brashear*
Permit No. 136	W.R. Nethken and Company, Inc.*
Permit No. 137	G & S Coal Company, Inc.
Permit No. 138	J.R. Thrasher Contracting and Stripping Co.*
Permit No. 139	J.R. Thrasher Contracting and Stripping Co.*
Permit No. 140	Shallmar Coal Company, Inc.*
Permit No. 141	Randall Robertson***
Permit No. 142	Ace Drilling Coal Company, Inc.*
Permit No. 143	Beener Coal Company
Permit No. 144	Clarence Rodamer*
Permit No. 145	Ginniman Coal Company*
Permit No. 146	Raymond A. Wolf Mining Company*
Permit No. 147	Menallen Coke Company*
Permit No. 148	Russel Shafer*
Permit No. 149	Homage Coal Co. (Emmett Dupstadt)*
Permit No. 150	Twin States Coal Company**
Permit No. 151	M.F. Fetterolf Coal Company, Inc.*
Permit No. 152	Ebensburg Coal and Clay Company**

FOR CALENDAR YEAR 1982

Permit No. 153	Raymond A. Wolf Mining Co. (UPRC)*
Permit No. 154	Michael Rostosky*
Permit No. 155	Ginniman & Ware Coal Company*
Permit No. 156	Harold H. Upole Coal Company*
Permit No. 157	T.G. & C. Coal Company, Inc.*
Permit No. 158	Clarence Rodamer Coal Company*
Permit No. 159	Michael Rostosky Coal Company*
Permit No. 160	Russel Shafer Coal Company*
Permit No. 161	Buffalo Coal Company, Inc.*
Permit No. 162	J.R. Thrasher Contracting & Stripping Co.***
Permit No. 163	Buffalo Coal Company, Inc.*
Permit No. 164	Union Coal Company*
Permit No. 165	Win-More Mining & Construction Co., Inc.*
Permit No. 166	Ginniman Coal Company*
Permit No. 167	Upperman Coal Company*
Permit No. 168	Frank Pulford*
Permit No. 169	Winner Bros Coal Company, Inc.*
Permit No. 170	Russel Shafer*
Permit No. 171	The Chief Coal Company*
Permit No. 172	Mary Ruth Corporation*
Permit No. 173	Oakland Coal Company
Permit No. 174	Bernard C. Drees*
Permit No. 175	Delta Mining, Inc.*
Permit No. 176	D & K Coal Company, Inc.*
Permit No. 177	T.G. & C. Coal Company, Inc.*
Permit No. 178	Emmett Duppstadt
Permit No. 179	Somerset Excavating, Inc.*
Permit No. 180	Ayers Coal Company*
Permit No. 181	Delta Mining, Inc.*
Permit No. 182	Winner Brothers Coal Company, Inc.
Permit No. 183	Chief Coal Company*
Permit No. 184	Eckhart Coal Company
Permit No. 185	Bessemer Iron & Coal Company*
Permit No. 186	Coal Lick Coal Company*
Permit No. 187	Phillips Big Vein Coal Company
Permit No. 188	Ace Drilling Coal Company, Inc.*
Permit No. 189	Buffalo Coal Company, Inc.
Permit No. 190	Buffalo Coal Company, Inc.*
Permit No. 191	Keystone Coal and Development Company (Liability Assumed by Garrett County Roads Department)
Permit No. 192	Ace Drilling Company, Inc.*
Permit No. 193	Wilhelm Coal, Inc.
Permit No. 194	M.F. Fetterolf Coal Company, Inc.***
Permit No. 195	Buffalo Coal Company, Inc.
Permit No. 196	Bessemer Iron & Coal Company*
Permit No. 197	Grafton Coal Company*
Permit No. 198	Jet Fuel Coal Company*
Permit No. 199	Bessemer Iron & Coal Company
Permit No. 200	Chief Coal Company*
Permit No. 201	Brashear Coal Company*

FOR CALENDAR YEAR 1982

Permit No. 202	Winner Bros. Coal Company, Inc.
Permit No. 203	Mary Ruth Corporation*
Permit No. 204	Grafton Coal Company*
Permit No. 205	Chief Coal Company*
Permit No. 206	Upperman Coal Company
Permit No. 207	Winner Bros. Coal Company, Inc.
Permit No. 208	Sanner Bros. Coal Company*
Permit No. 209	Delta Mining, Inc.
Permit No. 210	Markat, Inc.*
Permit No. 211	Oakland Coal Company*
Permit No. 212	Bessemer Iron & Coal Company*
Permit No. 213	Delta Mining, Inc.
Permit No. 214	Interstate Lumber Company*
Permit No. 215	Buffalo Coal Company, Inc.
Permit No. 216	Brashear Coal Company***
Permit No. 217	Bernard Drees Coal Company*
Permit No. 218	Buffalo Coal Company, Inc.*
Permit No. 219	G. & S. Coal Company, Inc.*
Permit No. 220	Evans Coal Company*
Permit No. 221	Bridgeview Coal Company*
Permit No. 222	John Duckworth*
Permit No. 223	Edward Mikel*
Permit No. 224	Delta Mining, Inc.*
Permit No. 225	Northwest Coal Company, Inc.*
Permit No. 226	Thrasher Coal Company**
Permit No. 227	Winner Brothers Coal Company, Inc.*
Permit No. 228	Bittinger Coal Company*
Permit No. 229	Charles M. Filsinger*
Permit No. 230	G & H Coal Company, Inc.
Permit No. 231	Hi-Note, Inc.
Permit No. 232	Buffalo Coal Company, Inc.*
Permit No. 233	Union Coal Company, Inc.
Permit No. 234	Clise Coal Company, Inc.
Permit No. 235	Markat, Inc.*
Permit No. 236	Delta Mining, Inc.*
Permit No. 237	Bridgeview Coal Company*
Permit No. 238	Burnham Coal Company, Inc.*
Permit No. 239	Highland Mining
Permit No. 240	Buffalo Coal Company, Inc.
Permit No. 241	Buffalo Coal Company, Inc.
Permit No. 242	Hopwood Strip Mine, Inc.**
Permit No. 243	Ponderosa Coal Company, Inc.*
Permit No. 244	Markat, Inc.*
Permit No. 245	Phillips Coal, Inc.*
Permit No. 246	Lambert Coal Company*
Permit No. 247	Winner Bros. Coal Company, Inc.
Permit No. 248	Buffalo Coal Company, Inc.*
Permit No. 249	Cobra Fuels
Permit No. 250	Laoc Coal Company*
Permit No. 251	Tower Resorces, Inc.
Permit No. 252	Phillips Coal, Inc.*

FOR CALENDAR YEAR 1982

Permit No. 253	Pine Mt. Coal Company*
Permit No. 254	T.G. & C. Coal Company*
Permit No. 255	Allegheny Mining Company*
Permit No. 256	Bridgeview Coal Company, Inc.*
Permit No. 257	A & R Coal Company
Permit No. 258	Clinton Coal Company**
Permit No. 259	Tower Resources, Inc.
Permit No. 260	Yough Tree Farm*
Permit No. 261	Russel Shafer***
Permit No. 262	Northwest Coal Company, Inc.**
Permit No. 263	Allegheny Mining Corporation*
Permit No. 264	Brashear Coal Company
Permit No. 265	Bittinger Coal Company
Permit No. 266	Delta Mining, Inc.
Permit No. 267	Bittinger Coal Company
Permit No. 268	Clyde J. Marsh
Permit No. 269	Hungry Hollow Coal Company*
Permit No. 270	Delta Mining, Inc.*
Permit No. 271	A. & R. Coal Company*
Permit No. 272	River Hill Coal Company
Permit No. 273	Win-More Mining & Construction Company
Permit No. 274	Evans Coal Company
Permit No. 275	Buffalo Coal Company, Inc.*
Permit No. 276	Buffalo Coal Company, Inc.
Permit No. 277	Allegheny Mining Corporation
Permit No. 278	Interstate Lumber Company*
Permit No. 279	Buffalo Coal Company*
Permit No. 280	Delta Mining, Inc.
Permit No. 281	Rondell Company*
Permit No. 282	Phillips Coal, Inc.*
Permit No. 283	G. & H. Coal Company, Inc.*
Permit No. 284	Tower Resources, Inc.*
Permit No. 285	Clinton Coal Company**
Permit No. 286	T.G. & C. Coal Company
Permit No. 287	T. L. Moran Coal Company
Permit No. 288	Delta Mining, Inc.
Permit No. 289	Pine Mt. Coal Company
Permit No. 290	Delta Mining, Inc.*
Permit No. 291	George Nolan**
Permit No. 292	Alexander Coal Company*
Permit No. 293	Pine Mt. Coal Company
Permit No. 294	Arlen Miller***
Permit No. 295	River Hill Coal Company
Permit No. 296	Bessemer Iron & Coal Company
Permit No. 297	Oakland Coal Company
Permit No. 298	Allegheny Mining Corporation
Permit No. 299	Interstate Lumber Company
Permit No. 300	Garbart Coal Company
Permit No. 301	Pine Mt. Coal Company*
Permit No. 302	L. C. Coal Company, Inc.*
Permit No. 303	Ginniman Brothers Coal Company**

FOR CALENDAR YEAR 1982

Permit No. 304	Buffalo Coal Company, Inc.
Permit No. 305	Wood Products, Inc.*
Permit No. 306	Bridgeview Coal Company*
Permit No. 307	T. L. Moran Coal Company
Permit No. 308	Best Coal Stripping, Inc.
Permit No. 309	Delta Mining, Inc.
Permit No. 310	Oakland Coal Company
Permit No. 311	Primrose Coal Company*
Permit No. 312	R. A. K. Coal Company, Inc.**
Permit No. 313	G. & S. Coal Company*
Permit No. 314	Wilhelm Coal, Inc.
Permit No. 315	Clise Coal Company
Permit No. 316	Brawal Mining, Inc.
Permit No. 317	John R. Livingston**
Permit No. 318	T.G. & C. Coal Company
Permit No. 319	John Duckworth*
Permit No. 320	Kelley Enterprises
Permit No. 321	Delta Mining, Inc
Permit No. 322	Bridgeview Coal Company*
Permit No. 323	Ayers Coal Company
Permit No. 324	John Duckworth
Permit No. 325	G. & S. Coal Company, Inc.
Permit No. 326	Buffalo Coal Company, Inc.
Permit No. 327	Buffalo Coal Company, Inc.
Permit No. 328	Buffalo Coal Company, Inc.
Permit No. 329	Winner Brothers Coal Company, Inc.
Permit No. 330	Interstate Lumber Company, Inc.
Permit No. 331	R. A. K. Coal Company, Inc.***
Permit No. 332	Seneca Mining Company
Permit No. 333	Westvaco Resources, Inc.
Permit No. 334	Buffalo Coal Company, Inc.
Permit No. 335	Interstate Lumber Company, Inc.
Permit No. 336	Interstate Lumber Company, Inc.
Permit No. 337	Commonwealth Coals, Inc.
Permit No. 338	Union Coal Company, Inc.
Permit No. 339	Wilhelm Coal, Inc.
Permit No. 340	Fetterolf Mining Inc.
Permit No. 341	Eastern Mining Systems
Permit No. 342	Primrose Coal Company
Permit No. 343	L. C. Coal Company
Permit No. 344	Bridgeview Coal Company*
Permit No. 345	Delta Mining, Inc.
Permit No. 346	Interstate Lumber Company
Permit No. 347	Kelley Enterprises
Permit No. 348	Schwinabart & Green Joint Venture
Permit No. 349	Wilhelm Coal, Inc.
Permit No. 350	Bridgeview Coal Company, Inc.
Permit No. 351	Winner Brothers Coal Company

FOR CALENDAR YEAR 1982

Permit No. 352	John Duckworth Coal Company
Permit No. 353	Winner Brothers Coal Company
Permit No. 354	Brawal Mining, Inc.
Permit No. 355	Wilhelm Coal, Inc.****
Permit No. 356	G. & S. Coal Company, Inc.
Permit No. 357	Richard Duckworth
Permit No. 358	Bridgeview Coal Company, Inc.
Permit No. 359	Buffalo Coal Company, Inc.
Permit No. 360	Buffalo Coal Company, Inc.
Permit No. 361	Pamela Mines, Inc.
Permit No. 362	Alpha Mining, Inc.
Permit No. 363	Pamela Mines, Inc.
Permit No. 364	Moran Coal Company
Permit No. 365	G. & S. Coal Company, Inc.
Permit No. 366	Buffalo Coal Company, Inc.
Permit No. 367	Buffalo Coal Company, Inc.
Permit No. 368	Winner Brothers Coal Company
Permit No. 369	Bittinger Coal Company
Permit No. 370	Keystone Coal Company Inc.
Permit No. 371	Tower Resources, Inc.
Permit No. 372	John Duckworth Coal Company
Permit No. 373	Commonwealth Coals, Inc.
Permit No. 374	T.G. & C. Coal Company, Inc.
Permit No. 375	Win-More Mining & Construction Company
Permit No. 376	Jones Coal, Inc.
Permit No. 377	Oakland Coal Company
Permit No. 378	Tower Resources, Inc.****
Permit No. 379	Masteller Coal Company
Permit No. 380	Fairview Coal Company
Permit No. 381	Richard Duckworth

DEEP MINES

Permit DM 101	Mettiki Coal Corporation
Permit DM 102	Masteller Coal Company
Permit DM 103	Mt. Top Coal Company
Permit DM 104	Mettiki Coal Corporation
Permit DM 105	Mettiki Coal Corporation
Permit DM 106	A & J Coal Corporation**
Permit DM 107	Masteller Coal Company

* *Operation Completed and Bond Released*

** *Forfeiture of Bond*

*** *Not Activated*

**** *Permit Not Issued*