



ARM Group LLC

Engineers and Scientists

February 4, 2022

Ms. Barbara Brown
Project Coordinator
Maryland Department of the Environment
1800 Washington Boulevard
Baltimore, MD 21230

Re: Baseline Surface Water Sampling for the
Interim Measures Work Plan
Area B: Parcel B14
Tradepoint Atlantic
Sparrows Point, MD 21219

Dear Ms. Brown:

On behalf of Tradepoint Atlantic (TPA), ARM Group LLC (ARM) is pleased to provide the following update on the surface water sampling related to the Humphrey Impoundment Interim Measures Work Plan (Revision 1 dated January 17, 2022) for Parcel B14 of the TPA property located in Sparrows Point, Maryland. On December 7, 2021, Environmental Protection Agency (EPA) provided conditional approval to initiate the filling of the Humphrey Impoundment in the southeast quadrant only. Obtaining full approval would include and be granted contingent upon:

1. All proposed monitoring wells must be installed.

Update: Installation of monitoring wells was completed between December 21, 2021, and January 5, 2022, and reported to EPA and MDE via a January 7, 2022 status letter. HI21-MWS was not installed due to access issues, however it will be installed by February 17, 2022.

2. A baseline sampling event of all B14 monitoring wells and Tin Mill Canal locations specified in the comments must be conducted and reported.

Update: The baseline groundwater sampling event was conducted from January 10-13, 2022. Surface water sampling was conducted from January 12-19, 2022. Refer below for more details.

3. Ready to use contingent remedies must be described and available should groundwater monitoring results warrant.

Update: Revisions to the B14 IM Work Plan (including more detailed descriptions of contingent remedies) were submitted on January 17, 2022.

4. Satisfactory revision according to all attached comments of the B14 IM Work Plan.

*Update: Revisions to the B14 IM Work Plan were submitted on January 17, 2022.
Regulatory review is ongoing.*

Surface Water Sampling

Surface water samples were collected from January 12-19, 2022, from three locations: Mix Station (End of Canal), TM04-TMC-SW (adjacent to TM04-PZM006), and Train Bridge (Mid Canal). The approximate locations of the surface water samples are shown on **Figure 1**. Results of the surface water samples are shown below:

Surface Water Sampling Results ($\mu\text{g/L}$)			
	Mix Station	TM04-TMC-SW	Train Bridge
Benzene	1 U	5 U	5 U
Naphthalene	1 U	1 U	1 U


U = Parameter was not detected above the laboratory detection limits.

If you have questions regarding any information covered in this document, please feel free to contact Peter Haid at Tradepoint Atlantic: 443-649-5055.

Respectfully Submitted,
ARM Group LLC

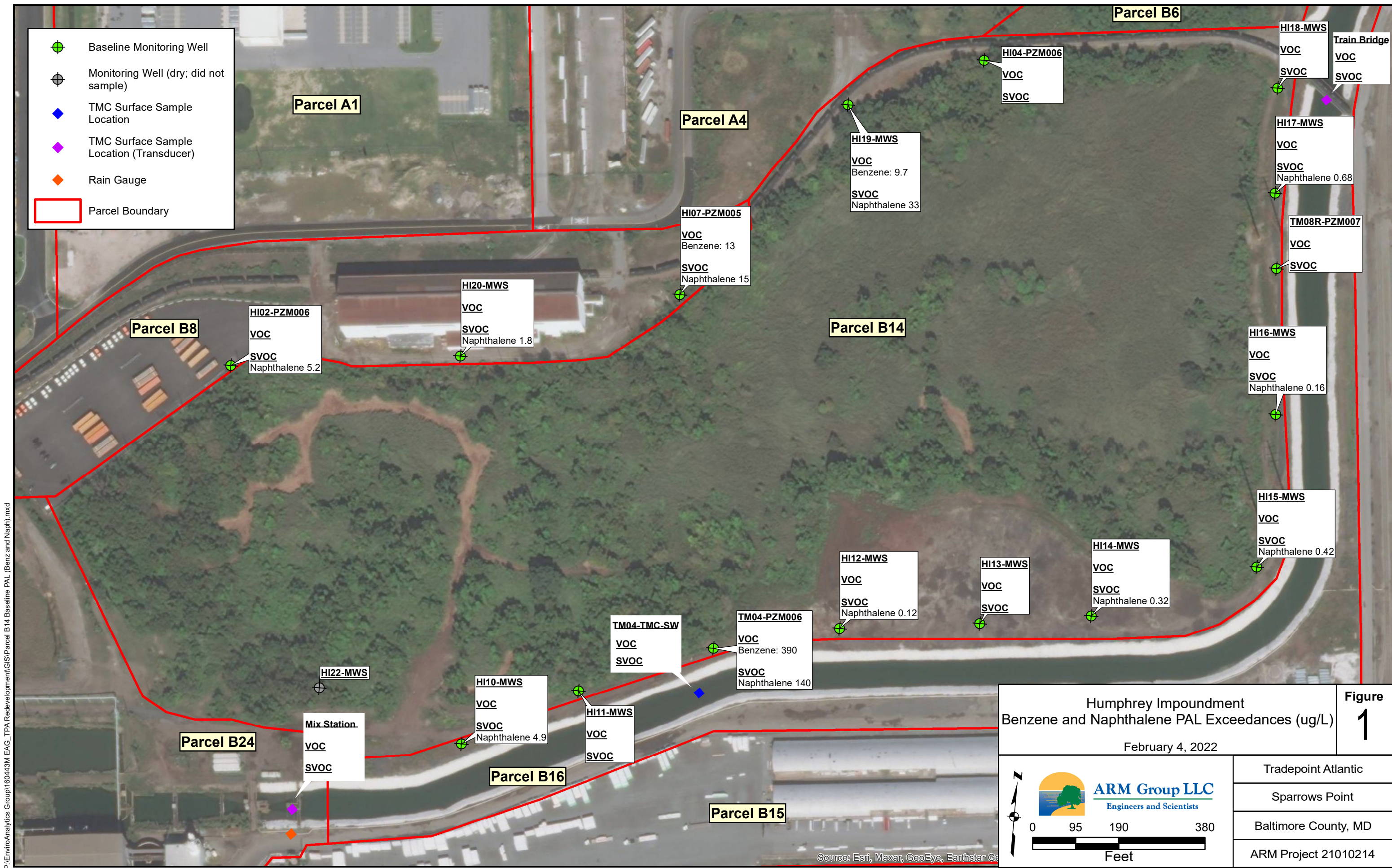


Kaye Guille, P.E., PMP
Senior Engineer



T. Neil Peters, P.E.
Senior Vice President





P:\EnviroAnalytics Group\160443M EAG_TPA Redevelopment\GIS\Parcel B14 Baseline PAL (Benz and Naph).mxd

Humphrey Impoundment
Benzene and Naphthalene PAL Exceedances (ug/L)
February 4, 2022

Figure
1

ARM Group LLC
Engineers and Scientists

0 95 190 380
Feet

Tradepoint Atlantic
Sparrows Point
Baltimore County, MD
ARM Project 21010214