



ARM Group LLC

Engineers and Scientists

October 22, 2020

Ms. Barbara Brown
Project Coordinator
Maryland Department of the Environment
1800 Washington Boulevard
Baltimore, MD 21230

Re: Work Plan Letter:
PORI Lagoon
Area B: Parcel B22
Tradepoint Atlantic
Sparrows Point, MD 21219

Dear Ms. Brown:

On behalf of Tradepoint Atlantic (TPA), ARM Group LLC (ARM) previously submitted a PORI Lagoon Characterization Report on September 1, 2020 for a designated portion of Area B: Parcel B22 (the Site) to the Maryland Department of the Environment (MDE) and United States Environmental Protection Agency (USEPA). In response to MDE comments received October 19, 2020, this Letter proposes additional groundwater monitoring activities to act as a precursor to the requested Corrective Measures Study (CMS), which will further characterize the impacts to groundwater associated with the PORI Lagoon, and evaluate the potential for the impacted groundwater to reach the Tin Mill Canal (TMC).

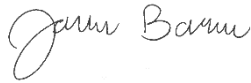
As shown on **Figure 1**, this Work Plan proposes the installation of 11 temporary groundwater monitoring points (piezometers) located between the PORI Lagoon and the TMC. These 1-inch piezometers will be installed to a depth of approximately 18 feet below ground surface (bgs) with a 10 foot screened interval. Piezometer installation field activities will be conducted in accordance with procedures referenced in the QAPP

Following installation, groundwater samples will be collected from each of these temporary piezometers and submitted for analysis of total petroleum hydrocarbon (TPH) diesel range organics (DRO) and gasoline range organics (GRO), Oil & Grease, volatile organic compounds (VOCs), and polynuclear aromatic hydrocarbons (PAHs) via SIM. Additionally, the previously observed “milky-colored product” and NAPL will be sampled and characterized. Groundwater sampling procedures and methods will be conducted as described in the QAPP.

The selection of permanent well locations for long-term monitoring will be based on the analytical results of the groundwater samples from these temporary monitoring points. Analytical results from this Work Plan will be incorporated into the CMS.

If you have any questions, or if we can provide any additional information at this time, please do not hesitate to contact ARM Group LLC at 410-290-7775.

Respectfully Submitted,
ARM Group LLC



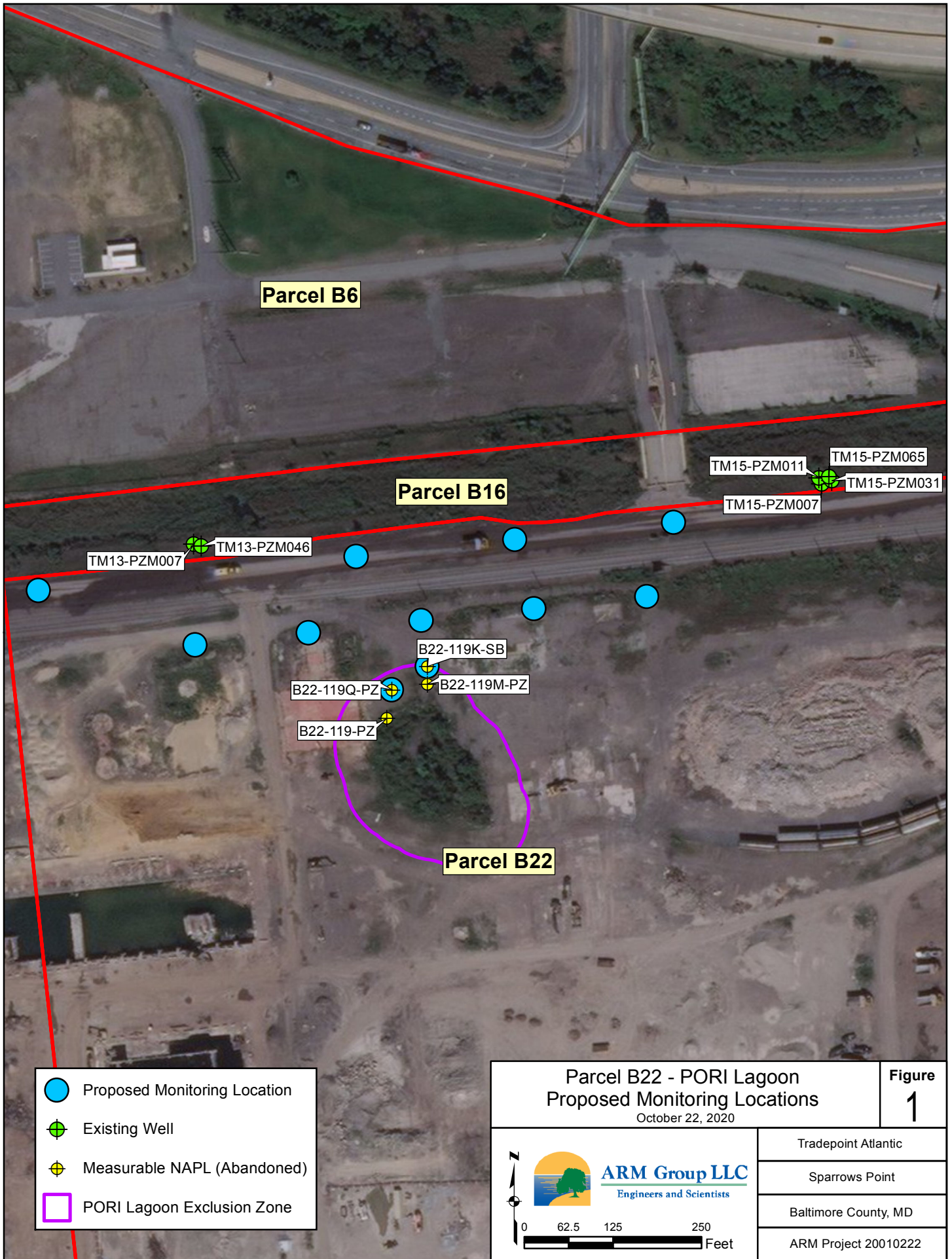
Joshua M. Barna, G.I.T.
Staff Geologist




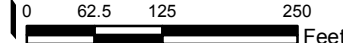
Eric S. Magdar, P.G.
Vice President



FIGURES



- Proposed Monitoring Location
- ⊕ Existing Well
- ⊕ Measurable NAPL (Abandoned)
- PORI Lagoon Exclusion Zone

Parcel B22 - PORI Lagoon Proposed Monitoring Locations October 22, 2020		Figure 1
 ARM Group LLC Engineers and Scientists		Tradepoint Atlantic
		Sparrows Point
0 62.5 125 250 Feet		Baltimore County, MD
		ARM Project 20010222