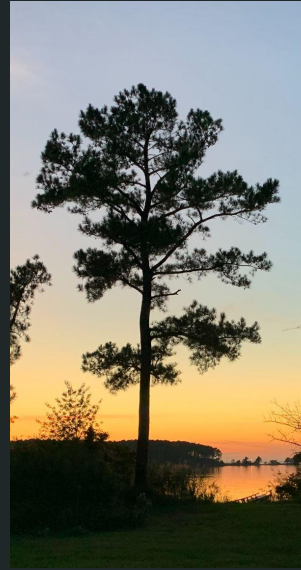


# 5 Million Trees Strategy



Maryland Department of Natural Resources  
March 11, 2022



# Staff Presenting

Philip R. Hager, Assistant Secretary, Land Resources

Anne Hairston-Strang, Ph.D, Acting State Forester

Marian Honecзы, Urban and Community Forestry Supervisor

Iris Allen, Chesapeake Watershed Forester



# DNR's Role in Maryland's 5 Million Trees Effort

Work with our designated partners (MDA, MDE and CBT) to plant and grow 5 Million Trees.

Work with other organizations including local governments, non-profit organizations and other entities to provide guidance, technical assistance, trees, and other assistance for tree planting and maintenance activities to achieve goal of 5 million trees.

Enhance and expand existing Forestry planting and maintenance programs and develop new programs.



# DNR's Role in Maryland's 5 Million Trees Effort

- Technical assistance
- Expand tree seedling
- Increase capacity
- New planting programs
- Maintenance
- New partners and markets
- Coordination



# Technical Assistance through 13 New Positions

- One Assistant Nursery Manager
  - Seedlings and seed collection
- 12 Tree Planting Specialists
  - Placed statewide, serve both urban and rural areas
  - Job duties:
    - Outreach and planning
    - Planting and maintenance
  - Anticipated start date July 1, 2022
- Seeking a diversity of talent
  - Reflecting the geographic and demographic composition of the state





# Increase Capacity of Existing Programs

- Marylanders Plant Trees
- Tree-Mendous
- Gift of Trees
- Maryland Urban and Community Forestry Committee Grant Programs
- Conservation Reserve Enhancement Program (CREP)
- Healthy Forest, Healthy Waters
- Environmental Quality Incentives Program (EQIP)
- Conservation Stewardship Program (CSP)



# Getting to 5 Million Trees

- Increase output of existing programs
- Develop new tree planting programs
- Enhance collaboration with other organizations
- Build upon success



# Challenges and Opportunities

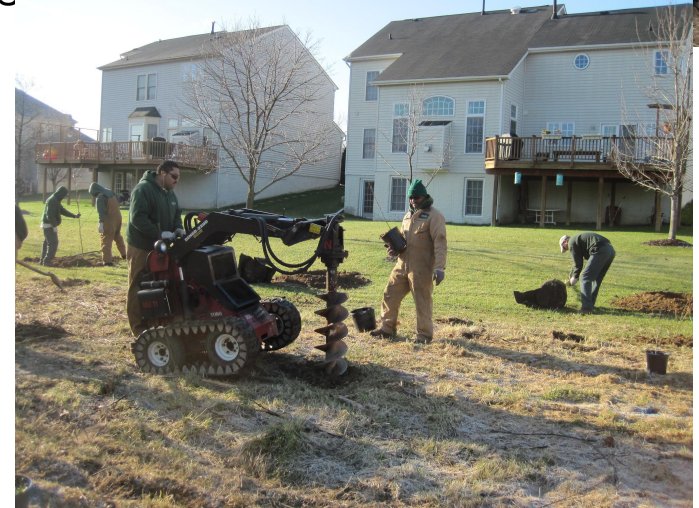
- Landowner Interest - Greatest limiting factor
  - 5MT funds have 15 year agreement and constraints
  - Not intended for harvest
  - Need to develop and foster long-term relationships to plant, grow, maintain trees
- Maintenance challenges with shifting ecology: weather, invasive species, weed competition, deer browse, more
  - Strategies *Under Development*
    - Expand volunteer opportunities
      - New Maryland Tree Stewards Program
      - Coordinate with *conservation partners*
    - Exploring opportunities for regional contract tree care crews after turnkey contracted maintenance ends
- Partner opportunities for outreach





# Opportunities and Challenges

- Ramp-up time needed to increase tree supply and trained contractors
  - Increases in smaller tree stock available sooner
- Building a solid foundation through staff training and community connections
  - Training and mentoring program under development
- Potential Partner and Funding Opportunities
  - Will seek funding options and pursue as they are identified



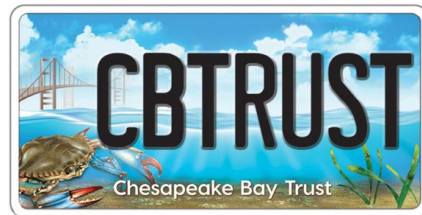
# Partnerships to Leverage Efforts and Funds



AND MORE!



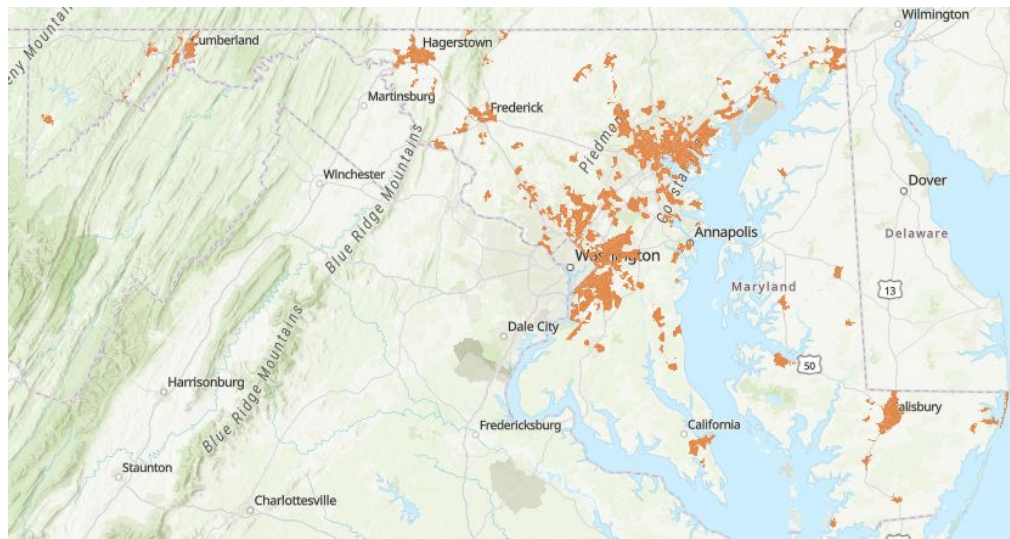
BALTIMORE  
**TREE TRUST**



**American  
Forests™**

# Coordinated Map Development for Urban Underserved Definition and Equity Data

- Supports CBT and other grant applicants
  - Map of underserved areas
- Data layers sourced from DHCD
- Reviewed by MDP
- Separately displays income, unemployment, mapped housing projects, and mapped redlined areas





# Partner Coordination

- Coordinate tracking with MDE
  - Update DNR's tracking mechanisms
- MDA Ag Land Planting
  - Incentive Coordination
  - Tree Planting Opportunity
    - Analysis excludes prime ag soils
  - CREP and other farm areas outside of cropped acres





A photograph of a young forest or nursery. In the foreground, there are tall, thin grasses with reddish-brown seed heads and patches of small white wildflowers. Behind this, a large number of young trees are planted in rows. Each tree is protected by a white, cylindrical plastic sleeve. The trees are set against a backdrop of a dense, mature forest with tall green trees under a clear blue sky. The text "Thank you!" is overlaid in the center of the image.

Thank you!