

Air Quality Facts

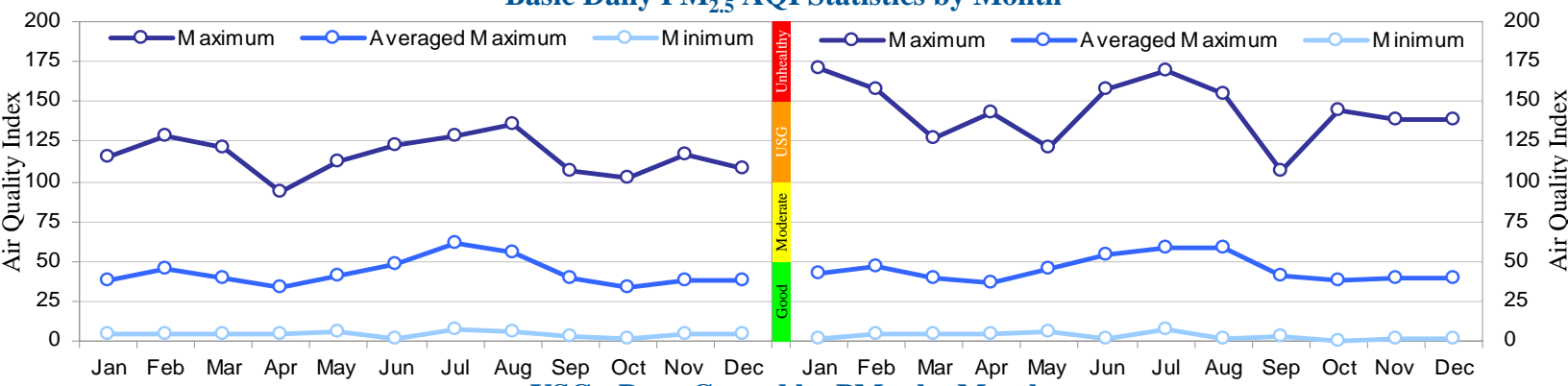
PM FINE – SEASONAL CLIMATOLOGY

WHEN IS PM FINE (PM_{2.5}) THE WORST DURING THE YEAR?

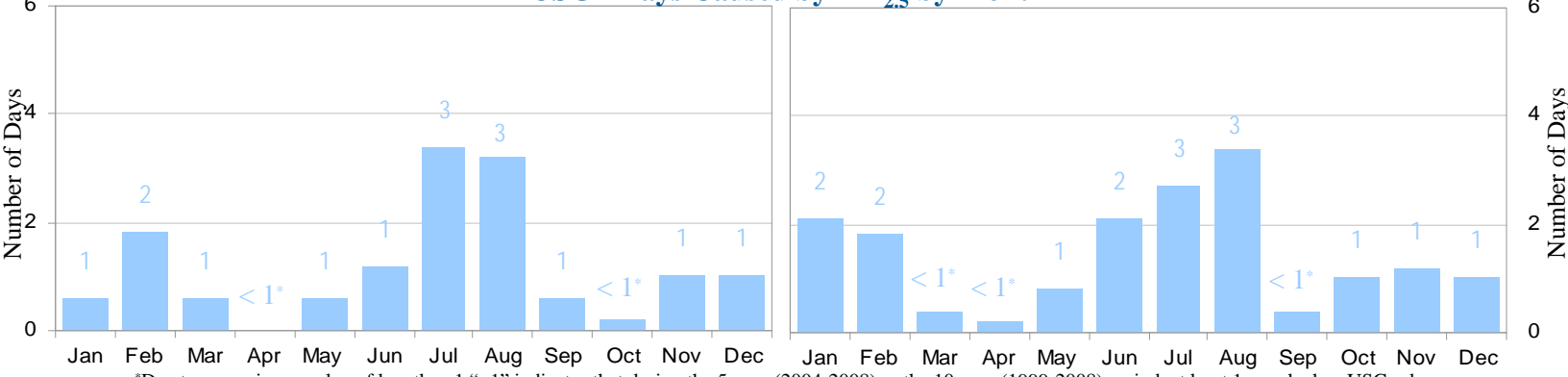
PM Fine (PM_{2.5}) is a year-round air pollutant. In Maryland, bad air days caused by PM_{2.5} air pollution typically exhibits maximums during the months of February and July-August. Scattered bad air days for PM_{2.5} can also occur at any time throughout the year. A bad air day caused by PM_{2.5} occurs when the Air Quality Index (AQI) for daily PM_{2.5} reaches 101 (Unhealthy for Sensitive Group, USG) category or above.

5-Year Period (2004-2008) | 10-Year Period (1999-2008)

Basic Daily PM_{2.5} AQI Statistics by Month

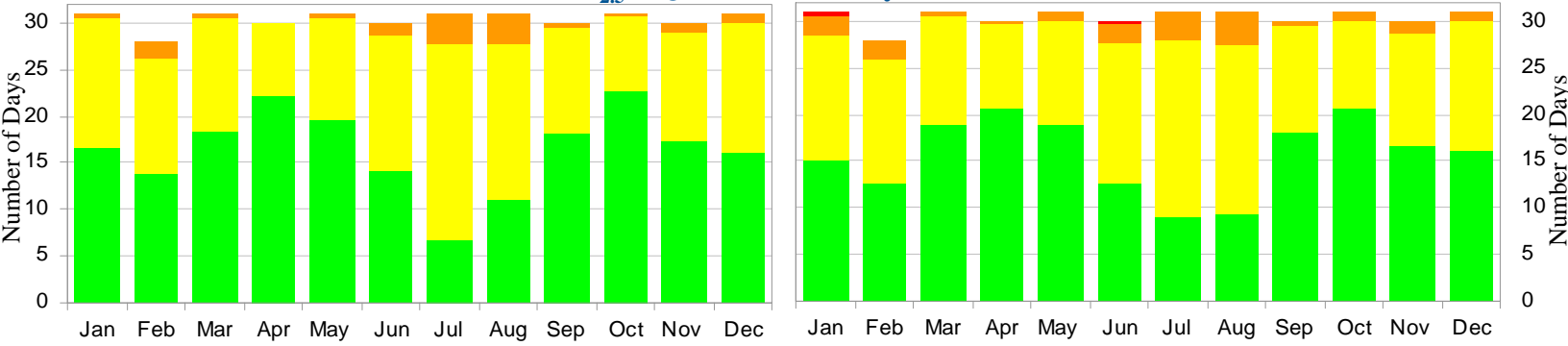


USG+ Days Caused by PM_{2.5} by Month



Due to averaging, a value of less than 1 "<1" indicates that during the 5-year (2004-2008) or the 10-year (1999-2008) period, at least 1 year had an USG+ day.

PM_{2.5} AQI Distribution by Month



During the spring (March-May) and fall (September-November), PM Fine concentrations are at the lowest. About 60 percent of the days during those months are Good. The Good days are in part associated with relatively cool and pleasant weather conditions as compared to extreme hot-humid and cold-dry during the summer and winter, respectively. Isolated bad air days during the winter months (December-February) are typically associated with stagnant weather conditions and strong surface inversions which lead to local accumulations of particles. During the summer months (June-August), days where AQI is USG or above are most likely to occur due to weather patterns favoring westerly transport of sulfate (mostly emitted from power plants), light winds, and a strong surface inversion trapping PM Fine and other pollutants at ground-level. Protect your health by knowing the current air quality conditions and forecasts. Visit www.cleanairpartners.net or call the air quality hotline at 410-537-3247.

Air Quality Index (AQI)



MARYLAND DEPARTMENT OF THE ENVIRONMENT

1800 Washington Boulevard | Baltimore, MD 21230

410-537-3000 | 1-800-633-6101

Martin O'Malley, Governor | Anthony G. Brown, Lt. Governor | Shari T. Wilson, Secretary

