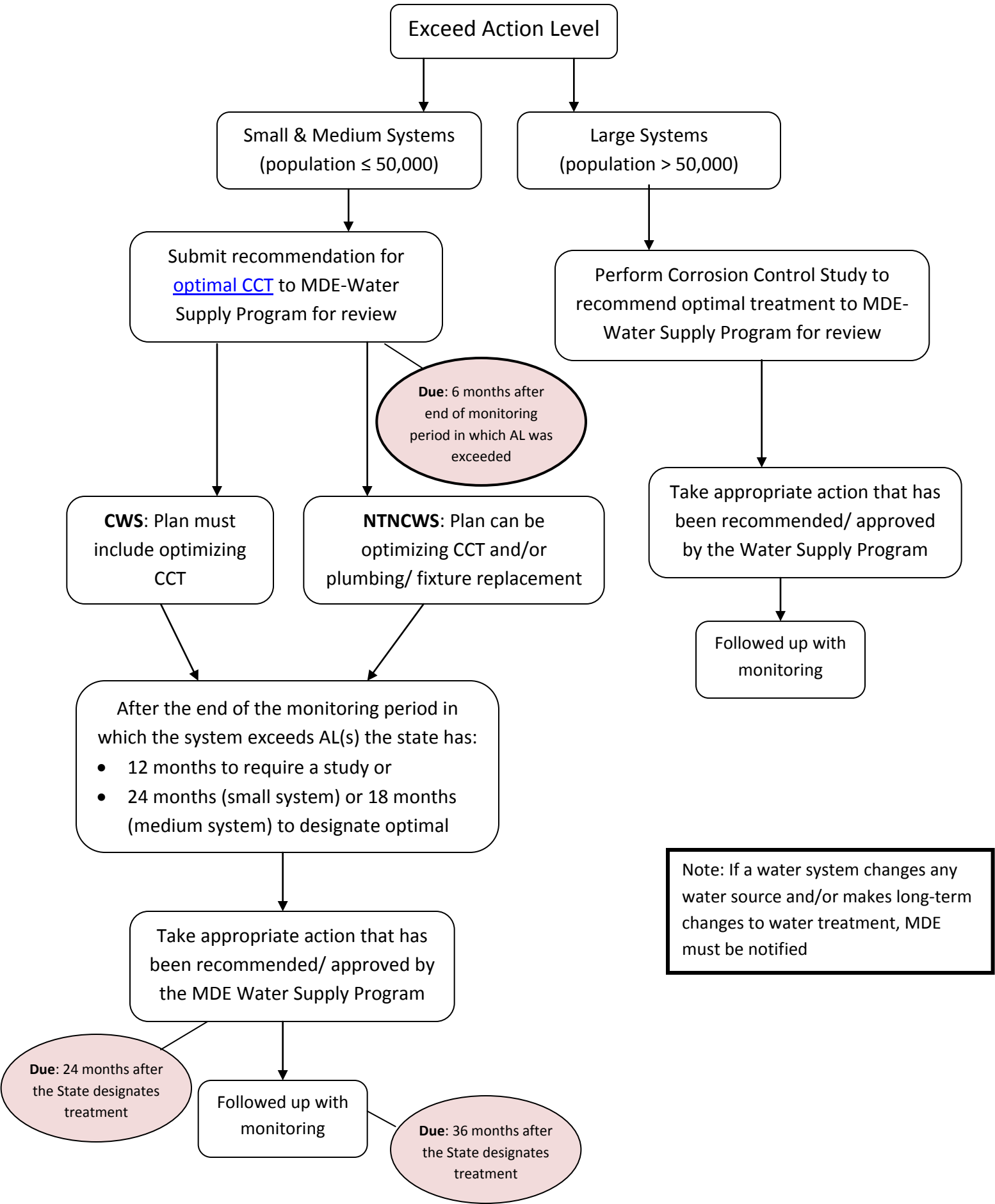


Corrosion Control Treatment



Exceed Action Level

Small & Medium Systems
(population ≤ 50,000)

Large Systems
(population > 50,000)

Submit recommendation for
optimal CCT to MDE-Water
Supply Program for review

Perform Corrosion Control Study to
recommend optimal treatment to MDE-
Water Supply Program for review

Due: 6 months after
end of monitoring
period in which AL was
exceeded

CWS: Plan must
include optimizing
CCT

NTNCWS: Plan can be
optimizing CCT and/or
plumbing/ fixture replacement

Take appropriate action that has
been recommended/ approved
by the Water Supply Program

Followed up with
monitoring

After the end of the monitoring period in
which the system exceeds AL(s) the state has:

- 12 months to require a study or
- 24 months (small system) or 18 months
(medium system) to designate optimal

Take appropriate action that has
been recommended/ approved by
the MDE Water Supply Program

Due: 24 months after
the State designates
treatment

Followed up with
monitoring

Due: 36 months after
the State designates
treatment

Note: If a water system changes any
water source and/or makes long-term
changes to water treatment, MDE
must be notified