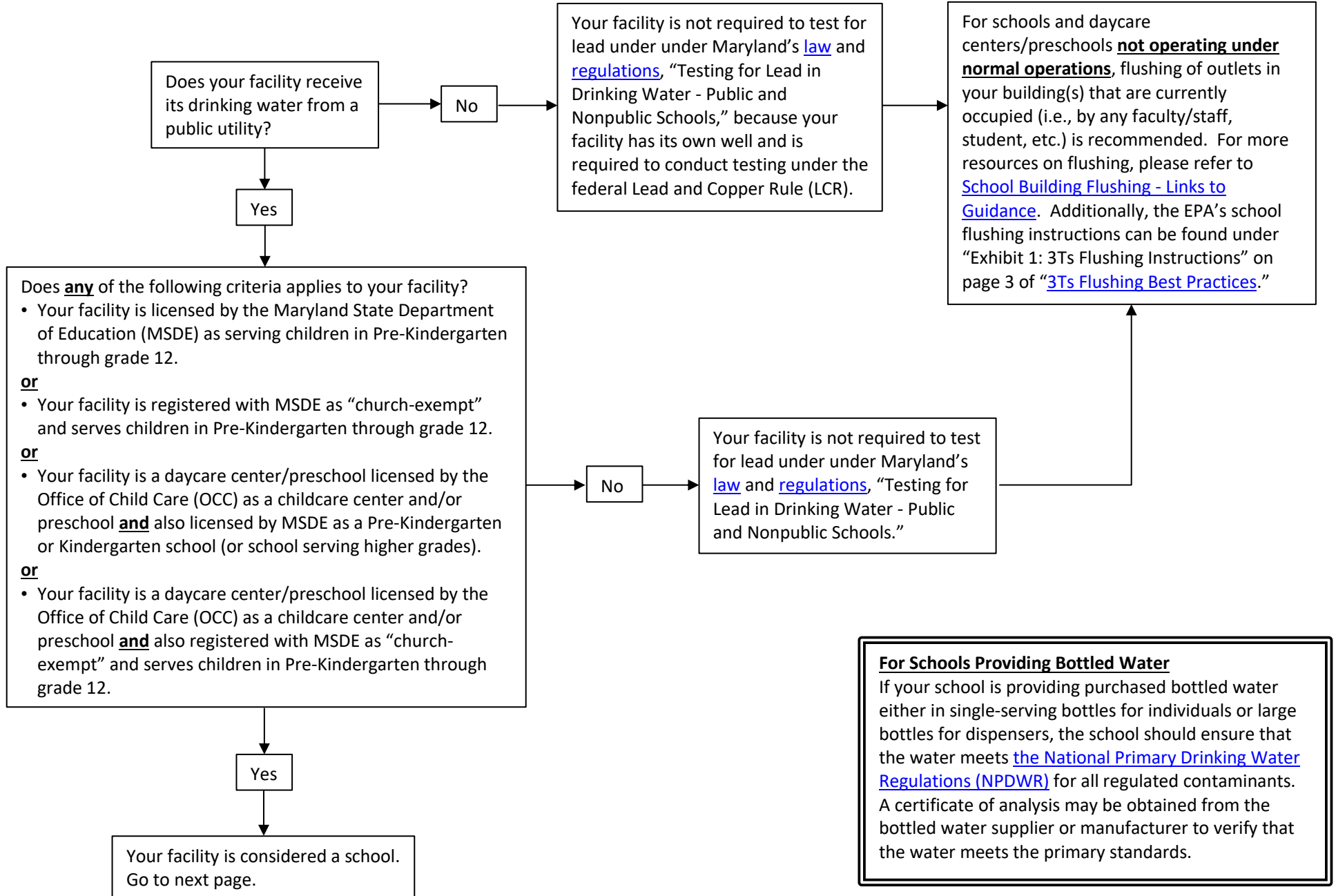
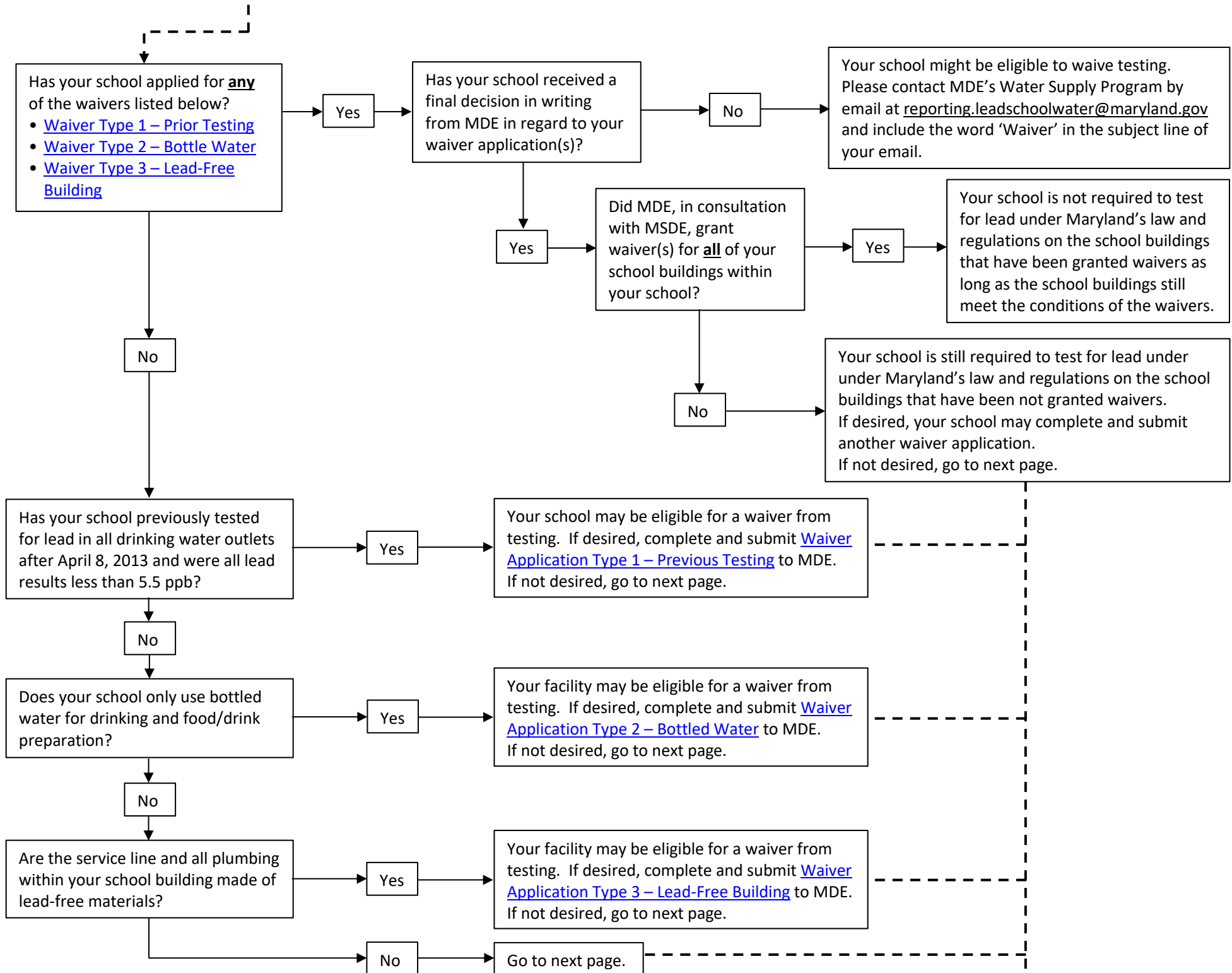


# Flowchart for Testing for Lead in Drinking Water - Public and Nonpublic Schools





**Collect first draw samples** from all outlets used for drinking and/or food/drink preparation (i.e., consumption outlets), including ice machines and hot drink machines, and outlets not used for drinking and/or food/drink preparation (i.e., non-consumption outlets) that are not [signed as not a drinking water outlet](#). Submit samples within 14 days of sample collection to a State-certified laboratory for analysis.

The lead Action Level under Maryland law ([Chapter 386 \(House Bill 270\), Acts of 2017](#)) of 20 parts per billion (ppb) (i.e., greater than or equal to 20.5 ppb) is effective through May 31, 2021. Effective June 1, 2021, the lead Action Level is 5 ppb (i.e., greater than or equal to 5.5 ppb) under Maryland law ([Chapter 237 \(House Bill 636\), Acts of 2021](#)).

The sample results exceeding the lead Action Level of 5 ppb is interpreted as results of 5.5 ppb or greater.

Do any sample results **exceed** the lead Action Level?

No

**Report all sample results as shown on official laboratory report** to MDE, MSDE, and your local health department within 30 days of samples being analyzed by the laboratory, using the following forms:

- [Sample Collection Form](#)
- [Laboratory Results Reporting Form](#)
- Official laboratory report signed by the Laboratory Director

**Certify** to MDE, MSDE, and the appropriate local health department that all drinking water outlets were tested in accordance with the regulation and provide other required information using the [Lead Sample Summary Certification Form](#) within 30 days after the samples were analyzed or 30 days after the end of the school calendar year in which the samples were collected.

**Repeat testing** of all the outlets in a 3-year cycle.

Yes

Go to next page.

Your facility may be eligible for a waiver from future testing if the most recent first-draw samples from **all** drinking water outlets have lead levels **less than** 5.5 ppb.

If desired, **complete and submit** [Waiver Application Type 1 – Prior Testing](#) to MDE and MSDE.

If an outlet has an elevated level of lead (**All of the following must be performed**)

**Close off access** to water from the outlets that are used for consumption within 24 hours of receiving laboratory report with elevated levels of lead.

*For non-consumption outlets, within 24 hours of receiving laboratory report with elevated levels of lead, either signage must be posted or access to the outlets must be closed.*

**Collect a flush sample** from each outlet with an elevated level of lead within 5 school days of receiving laboratory report with elevated levels of lead, and submit samples within 14 days of sample collection to a State-certified laboratory for analysis.

**Report all sample results** to MDE, MSDE, MDH, and your local health department within 30 days of samples being analyzed by the laboratory, using the following forms:

- [Sample Collection Form](#)
- [Laboratory Results Reporting Form](#)
- Official laboratory report signed by the Laboratory Director

**Send notification** of elevated lead results to parents, teachers, and staff within 10 school days of receiving laboratory report with elevated levels of lead.

**Submit Certification of Elevated Lead Sample Result Notice** to MDE and MSDE within 30 days of sending notification of elevated levels of lead.

**Post sample results on school website** within 30 school days of receiving laboratory report with elevated levels of lead.

Drinking water outlets with lead results of greater than 5 ppb (i.e., greater than or equal to 5.5 ppb), but less than 20 ppb, are subject to required remediation by August 1, 2022, under legislation ([House Bill 636](#)) passed in 2021, if laboratory analysis of these samples was performed on or before June 1, 2021, including samples analyzed prior to the passage of the Bill.

**Report all sample results** to MDE, MSDE, MDH, and your local health department within 30 days of samples being analyzed by the laboratory, using the following forms:

- [Sample Collection Form](#)
- [Laboratory Results Reporting Form](#)
- Official laboratory report signed by the Laboratory Director

**Certify** to MDE, MSDE, and the appropriate local health department that all drinking water outlets were tested in accordance with the regulation and provide other required information using the [Lead Sample Summary Certification Form](#) within 30 days after the samples were analyzed or 30 days after the end of the school calendar year in which the samples were collected.

**Submit Remedial Plan of Action Form** to MDE and MSDE within 30 school days of receiving laboratory report with elevated levels of lead.

**Perform remediation** on outlets with elevated levels of lead.

Go to next page.

