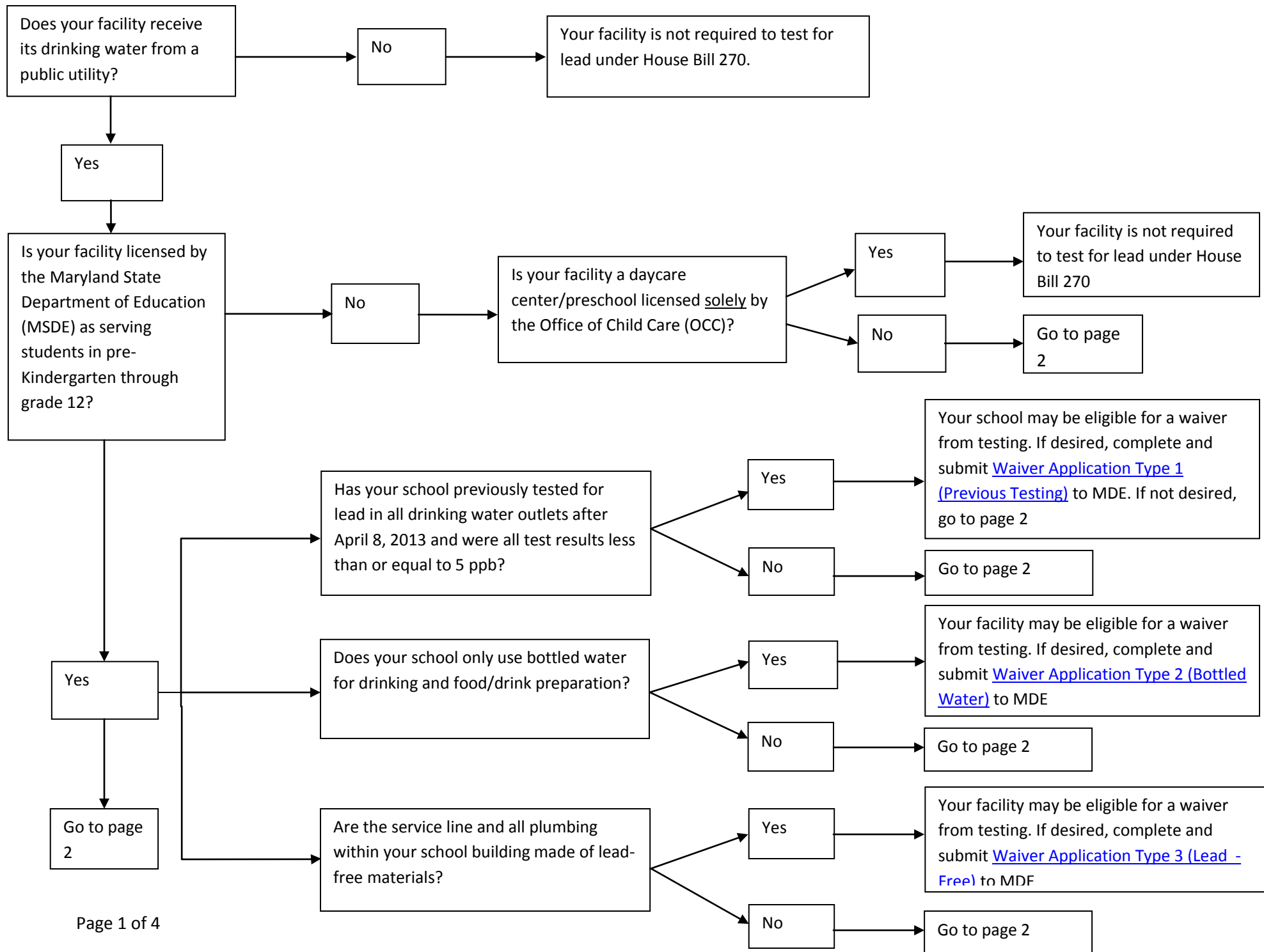


Appendix B: Flow Chart



Test all outlets used for drinking water and food/drink preparation, including ice machines and hot drink machines and submit samples to laboratory for analysis within 14 days of sample collection. Any outlet that is not tested must have [signage](#)

Are all test results less than or equal to 20.4 ppb?

Yes

No

Go to page 3

Report all test results to MDE, MSDE, and your local health department within 30 days of samples being analyzed by the laboratory, using the following forms:

-[Sample Collection Form](#)
-[Laboratory Results Reporting Form](#)
-Official laboratory report signed by the Laboratory Director

Certify to MDE, MSDE, and the appropriate local health department that all drinking water outlets were tested in accordance with the regulation and provide other required information using the [Lead Sample Summary Certification Form](#) within 30 days after the samples were analyzed or 30 days after the end of the school calendar year in which the samples were collected,

Are all test results less than or equal to 5.4 ppb?

Yes

No

Your facility may be eligible for a waiver from future testing. If desired, **complete and submit** [Waiver Application Type 1](#) to MDE and MSDE. If not desired, repeat testing in 3 years

Repeat testing in 3 years.

