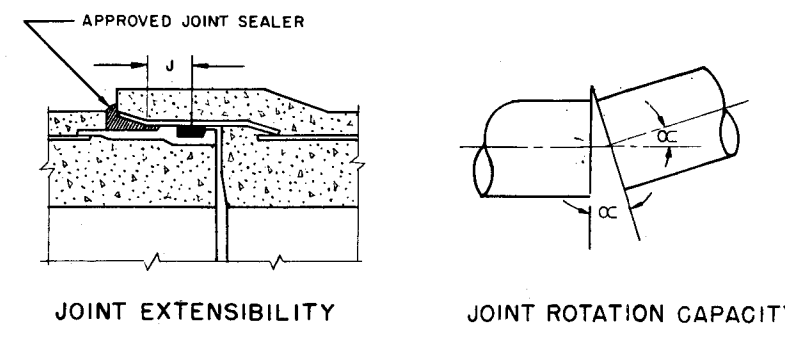


DETAIL OF PIPE CONDUIT SECTION ON A-A CRADLE SHOWN

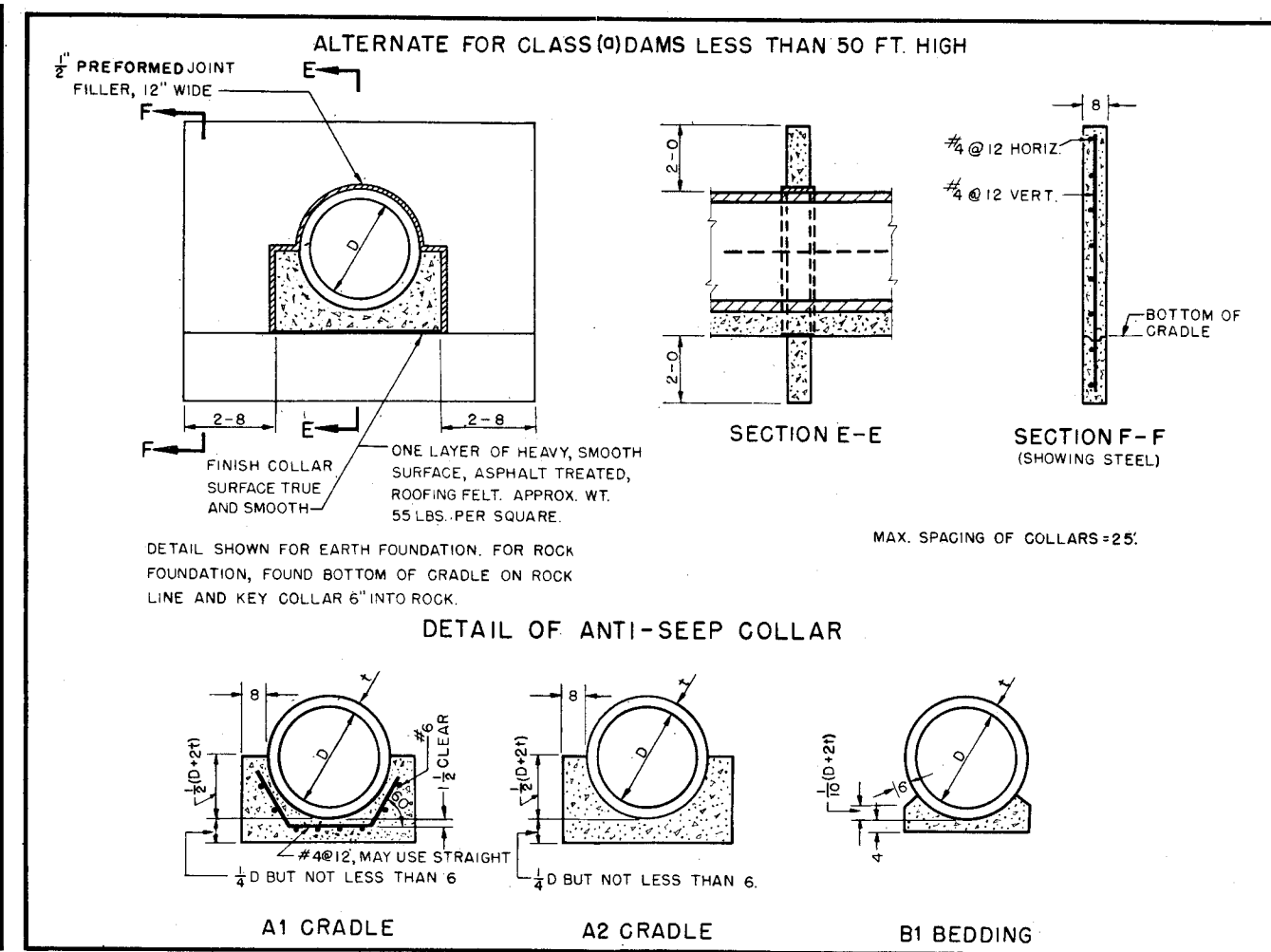
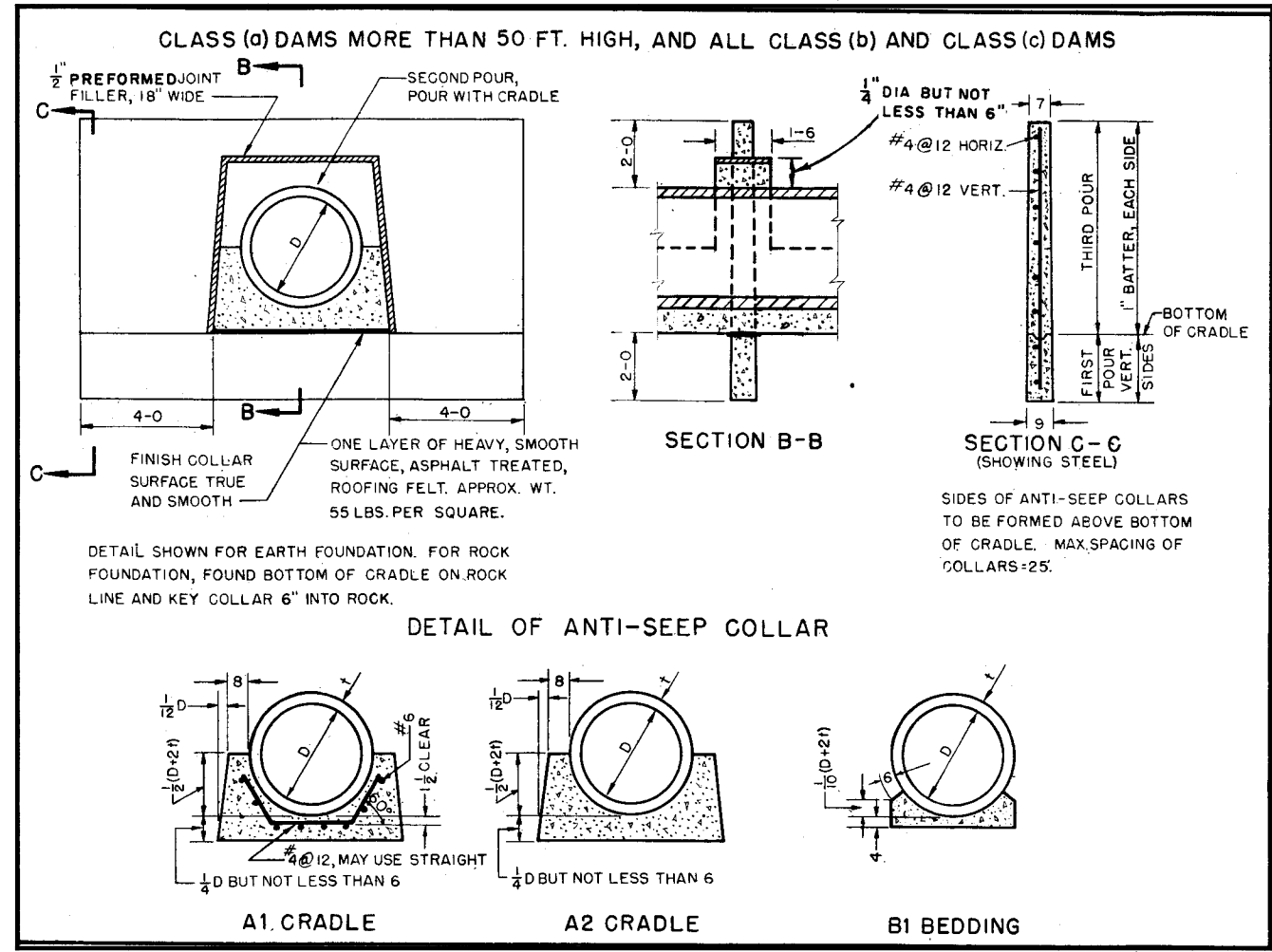
WHEN A1 CRADLE USED:
CUT LONGITUDINAL BARS AT 3" FROM EACH SIDE OF ARTICULATION JOINT. USE NO DOWELS.



PIPE JOINT DISPLACEMENT CHARACTERISTICS

L	J	α
LENGTH OF PIPE SECTION	REQD JOINT EXTENSIBILITY	REQD JOINT ROTATION CAPACITY
FEET	INCHES	RADIANS

PRIOR APPROVAL OF PIPE AND PIPE JOINT DETAIL PROPOSED FOR USE, TO BE REQUIRED BY THE SPECIFICATIONS.



PIPE AND CRADLE OR BEDDING ALTERNATES			
MINIMUM THREE EDGE BEARING TEST STRENGTH LOAD IN POUNDS PER LINEAL FOOT OF PIPE FOR CORROSPONDING PIPE AND CRADLE OR BEDDING			
CRADLE OR BEDDING	PIPE SPECIFICATION	LOAD TO PRODUCE NOT MORE THAN 0.01 INCH CRACK	LOAD TO PRODUCE NOT MORE THAN 0.001 INCH CRACK
A1	AWWA C-300		
	C-301		
	C-302		
A2	ASTM C-361		
	C-300		
	C-301		
B1	C-302		
	ASTM C-361		
	C-300		
	C-301		
	C-302		
	ASTM C-361		

SCOPE:

- Pipe Diameters: D=24, 30, 36, 42, and 48

CRITERIA:

- Materials (except pipe):
Concrete: Class B, $f_c = 4000$ psi, $f_c = 1600$ psi
Reinforcing Steel: Intermediate grade
- Applicable Criteria:
Engineering Memorandum SCS-27
Engineering Memorandum SCS-42 (rev.2)
Technical Release No. 5
Technical Release No. 18

REFERENCE:
ES 154

FIGURE E-7
OUTLET CONDUIT DETAILS
EWP Unit Portland, Oregon