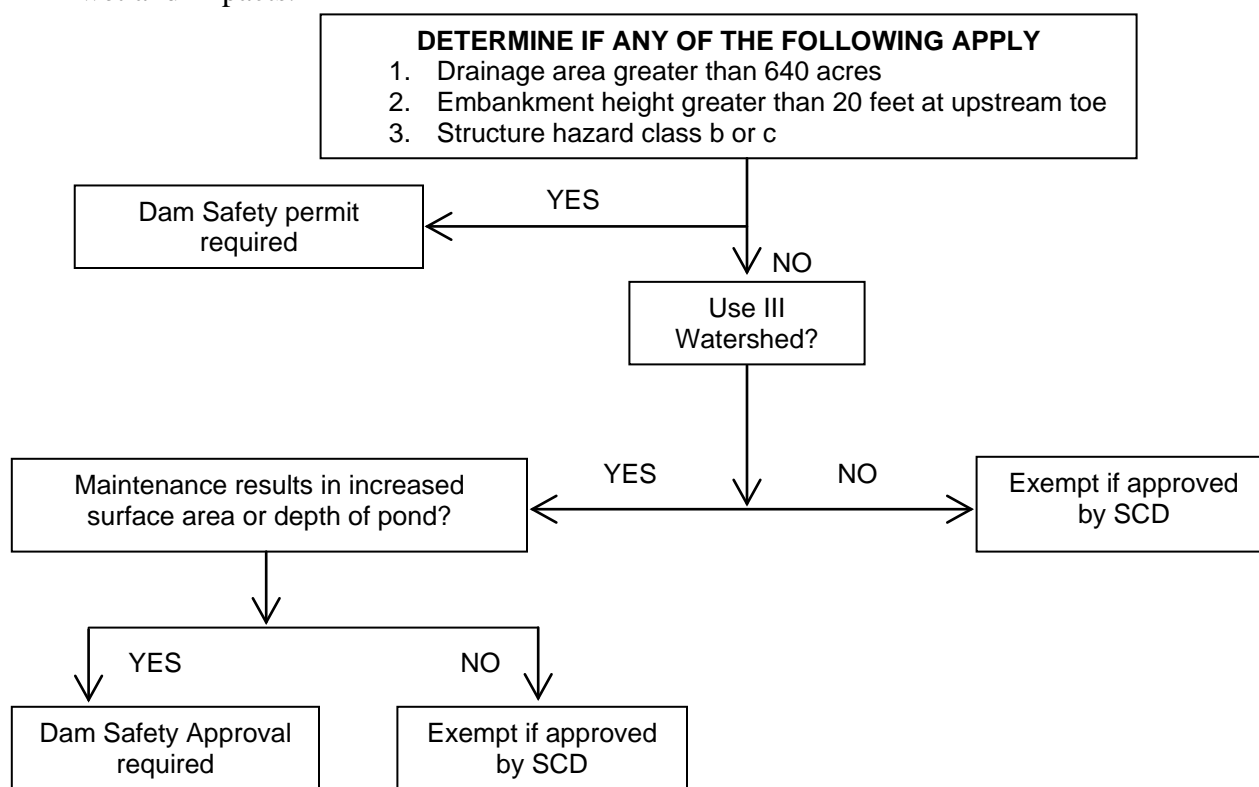




**SMALL POND MAINTENANCE AND REPAIR FLOW CHART**

This Small Pond Repair Flow Chart is to protect USE III Watersheds (natural trout waters) from increased thermal impacts to aquatic life. Typically, the Soil Conservation District may approve repairs to small ponds if the project does not increase downstream thermal pollution. If thermal impacts are adequately addressed to Department’s satisfaction, approval for the pond repair may be obtained from the Soil Conservation District. A permit may still be required from the Department for wetland impacts.



**General Notes**

1. Maintenance and Repair includes any grading or excavation of the pond embankment or within the pool area, or reconstruction or replacement of any spillway structures.
2. If the project involves increased stormwater runoff, a Dam Safety Permit may be required.
3. If wetlands or wetland buffers are impacted a Wetlands permit may be required.
4. Mowing and vegetation control above the water level do not require authorization.
5. Chemical treatment for vegetation or algae control within the pool requires a WSA toxic monitoring permit.
6. Excess spoil may not be disposed in stream channels, the 100-year floodplain, or wetlands or wetlands buffer areas without prior approval by WSA.

Approved by: Hal Van Aller, Chief, Dam Safety Division Hal Van Aller May 23, 2018