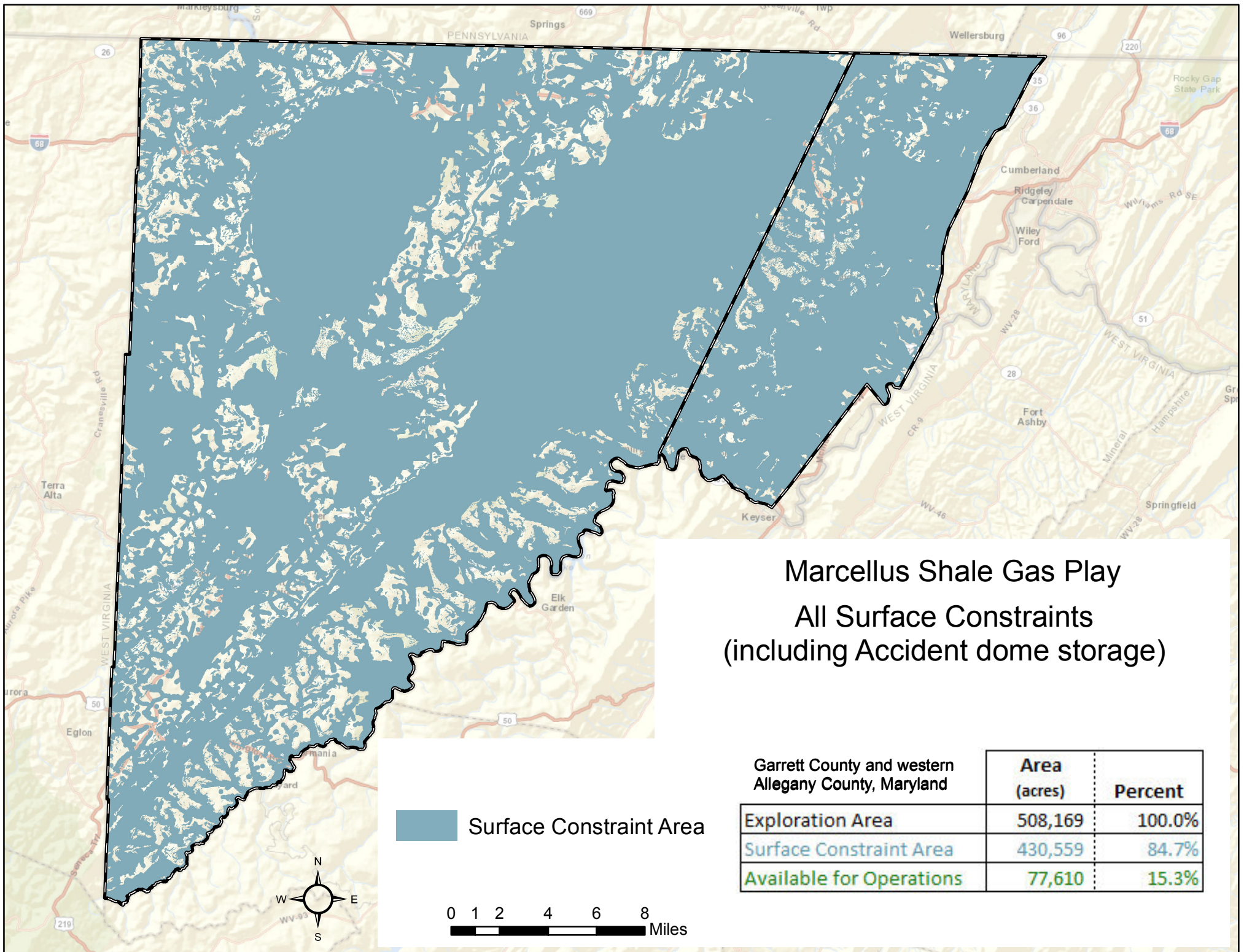


Off-Limit Areas	Setback/Buffers	Type
Aquatic habitat <ul style="list-style-type: none"> streams, rivers, seeps, springs (Elmore streams) wetlands (NWI and DNR) lakes, ponds, reservoirs (NHD) 100 year floodplains (FEMA) 	450 feet	Surface
Special conservation areas <ul style="list-style-type: none"> Wildlands Irreplaceable Natural Areas (BioNet Tier 1 and 2) 	600 feet	Surface
Cultural, historical and recreational areas <ul style="list-style-type: none"> National Registry sites State and Federal Parks (no federal parks – do not use reservoirs) Trails (land only) Wildlife Management Areas Scenic and Wild Rivers Scenic Byways 	300 feet	Surface
All Other DNR Public Lands <ul style="list-style-type: none"> State Forests Natural Resource Management Areas Fisheries, etc. 	0 feet	Surface
Caves (Not modeled - no data)	1000 feet	Surface
Limestone outcrops (Not modeled - can't buffer on the east side only)	750 feet on downdip (eastern) side	
Deep Creek Lake	2,000 feet	Surface
Low, Medium and High Density Residential and Institutional Uses (MDP 2010)	0 feet	Surface
Accident Dome Gas Storage Field (Note subsurface constraint – run with and without this constraint)	0 feet	Subsurface
➤ 15% slopes (UMCES)	0 feet	Surface
Drinking water reservoir watersheds (Broadford Lake, Piney Reservoir, Savage Reservoir)	0 feet	Surface
Wellhead protection area or source water assessment area for a Public Water System (If no well head protection area mapped, use default buffer of 1,000 feet)	1000 feet	Surface
Scenario Runs: <ol style="list-style-type: none"> With and without Accident Dome Pad threshold – 4 acres Lateral extent – Conservative: 4,000 feet, Optimistic: 8,000 feet 		



Marcellus Shale Gas Play All Surface Constraints (including Accident dome storage)

Garrett County and western
Allegany County, Maryland

	Area (acres)	Percent
Exploration Area	508,169	100.0%
Surface Constraint Area	430,559	84.7%
Available for Operations	77,610	15.3%

