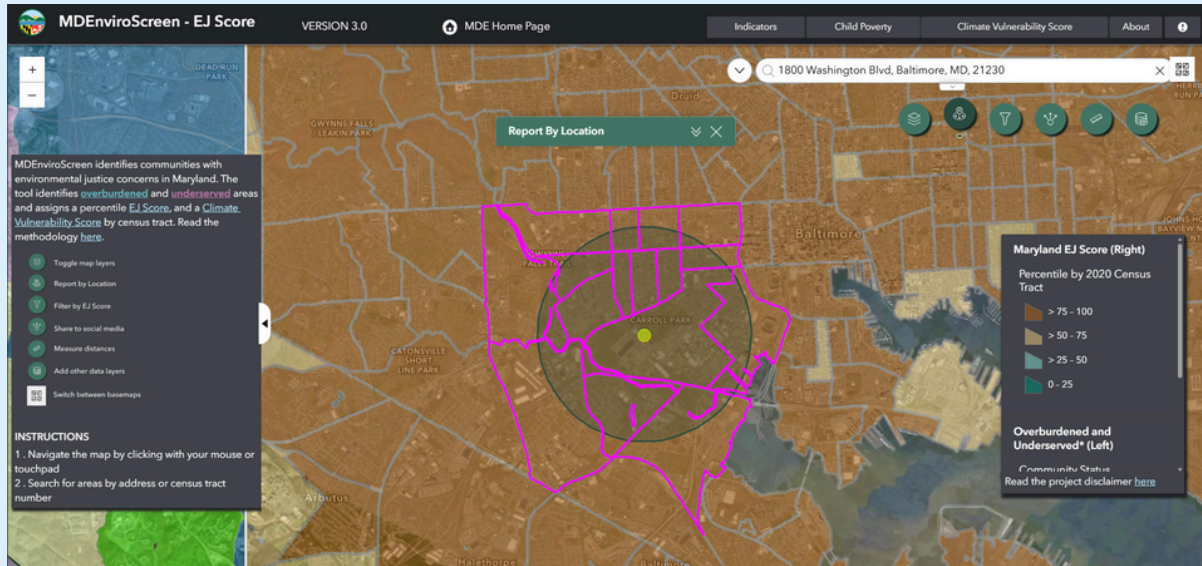




The Maryland Department of the Environment

# MDEnviroScreen



## Harness the power of MDEnviroScreen!

MDEnviroScreen is a tool that helps identify communities disproportionately affected by pollution and climate impacts. It uses an Environmental Justice (EJ) Score and a Climate Vulnerability Score (CVS) to inform decisions on permitting, enforcement, and infrastructure improvements, focusing on populations with limited access to resources.

### What you'll learn

How to navigate MDEnviroScreen, identify EJ and climate concerns in your community.

### Who should attend

Community members, Parents, Business owners, Students, Policymakers, Everyone!

### Future webinar dates.

- February 9<sup>th</sup> at 12:30 pm (30 minutes)
- February 20<sup>th</sup> at 10:00 am (60 minutes)
- March 6<sup>th</sup> at 6:00 pm (30 minutes)
- March 23<sup>rd</sup> at 6:00 pm (60 minutes)
- April 10<sup>th</sup> at 10:00 am (60 minutes)

### Video call link:

<https://zoom.us/j/3234196314?pwd=SzZVZW5mMkFWVThFZ2lTUtpEhLQT09&omn=92258599515>

Meeting ID: 323 419 6314 Passcode: 90jGPc

For more information about MDEnviroScreen visit: [bit.ly/MDEej](https://bit.ly/MDEej)