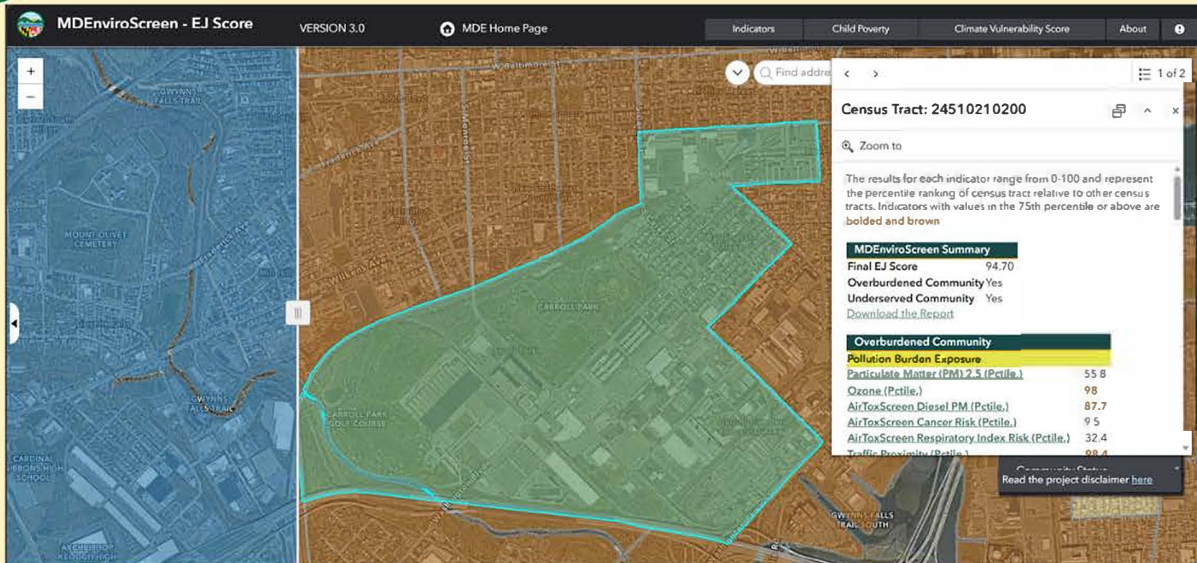




The Maryland Department of the Environment

MDEnviroScreen



What's in your report?

MDEnviroScreen is a tool that helps identify communities disproportionately affected by pollution and climate impacts. It uses an Environmental Justice (EJ) Score and a Climate Vulnerability Score (CVS) to inform decisions on permitting, enforcement, and infrastructure improvements, focusing on populations with limited access to resources.

What you'll learn

How to navigate MDEnviroScreen, identify EJ and climate concerns in your community.

Who should attend

Community members, Parents, Business owners, Students, Policymakers, Everyone!

Future webinar dates.

- June 1st at 12:30 pm (30 minutes)
- June 17th at 10:00 am (60 minutes)
- July 8th at 1:00 pm (30 minutes)
- July 27th at 5:00 pm (60 minutes)
- August 10th at 1:30 pm (30 minutes) en Espanol
- August 29th at 10:00 am (60 minutes)

Video call link:

<https://zoom.us/j/98089028403?pwd=tZ1wpPpyJC59BayH4iQjqHesc9DdAJ.1>

Meeting ID: 980 8902 8403

Passcode: 2N4YQv

For more information about MDEnviroScreen visit: bit.ly/MDEej