

Maryland's
Building Decarbonization Policies

Alternative Fuels and Technologies Session 2

May 1st, 2025

Visit Our Website
mde.maryland.gov

Working Group Purpose

- Create a consistent, scientifically-based assessment of the lifecycle emissions impacts of alternative fuels and technologies to apply to Maryland's building decarbonization policies
- Solicit stakeholder input to inform the development of this framework

Agenda

A nighttime photograph of a city skyline, likely Dubai, featuring several tall, brightly lit skyscrapers. A construction crane is visible on the left side of the frame. The sky is dark blue, and the city lights create a vibrant contrast.

- 1 Short recap
- 2 Dr. Emily Grubert
Clean Heat: Analytical Support for Transition Policies
- 3 Feedback Continued
- 4 Q&A



Learn More

BEPS Website



Clean Heat Rules
Website





Piecing Policies Together

EmPOWER reduces electricity and fossil fuel use in most buildings
(excludes small utilities + delivered fuel providers)

CHS reduces fossil fuel use in all buildings (excludes manufacturing)

BEPS reduces electricity and fossil fuel use in large buildings (35,000 sq. ft. and larger)

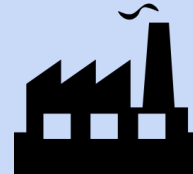


ZEHES reduces fossil fuel use for small heating equipment

Some schools, historic properties, small commercial buildings, and other building types are excluded from BEPS and ZEHES but covered by CHS and/or EmPOWER



Manufacturing facilities are excluded from BEPS, CHS, and ZEHES but covered by EmPOWER





Dr. Emily Grubert

University of Notre Dame

Request for Input: Alternative Fuels + Technologies

- Hydrogen (from steam methane reforming)
- Hydrogen from dedicated renewables
- Biomethane from animal waste
- Biomethane from landfill gas
- Biomethane from fats, oils, and greases
- Biomethane from wastewater
- Biodiesel from soybeans
- Biodiesel from canola
- Biodiesel from corn
- Biodiesel from used cooking oil
- Renewable diesel from soybeans
- Renewable diesel from canola
- Renewable diesel from corn
- Renewable diesel from used cooking oil

Technologies

- Fuel cells
- Carbon capture

Others?

...

Feedback Request

What other technologies should be considered?

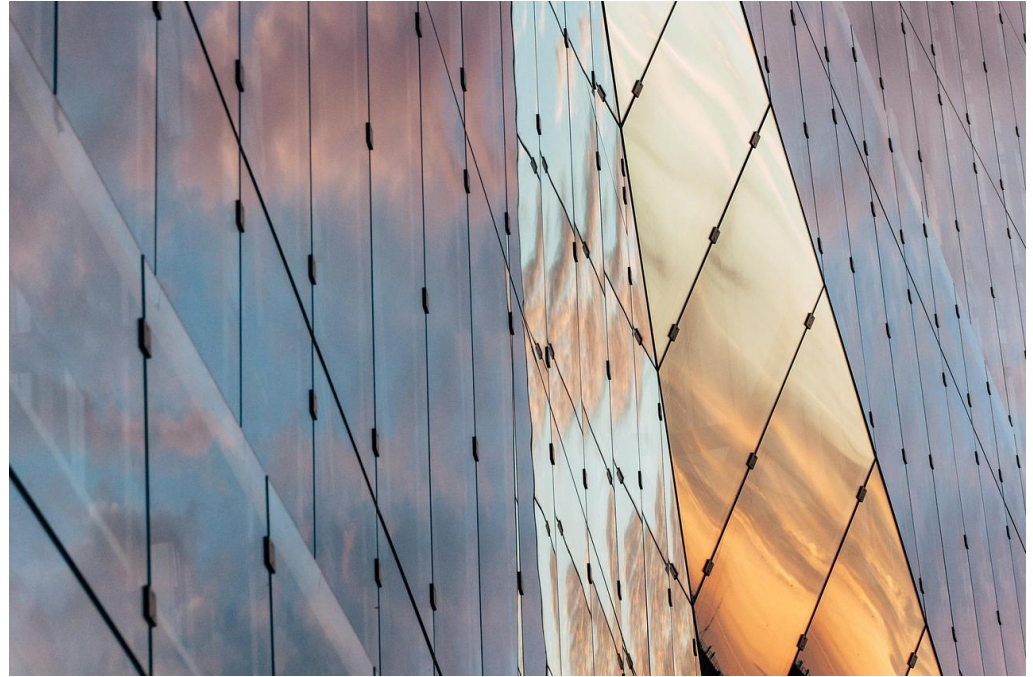
What should MDE consider as we evaluate these technologies?

What supporting documentation can you share?

Next Meeting

June 2nd @ 9AM

Feedback Review & Next Steps





Q&A



Clean Heat Rules



cleanheat.mde@maryland.gov



410-537-3890

Clean Heat Email List



BEPS



beps.mde@maryland.gov



410-537-3183

BEPS Email List

