

## Appendix B1

### Detailed Targets and Reduction Schedule

**Table of Maryland Bay Water Quality Segment-Shed Labels and Names**

ANATF_DC	Anacostia River Tidal Fresh DC
ANATF_MD	Anacostia River Tidal Fresh Maryland
BACOH	Back River Oligohaline
BIGMH	Big Annemessex River Mesohaline
BOHOH	Bohemia River Oligohaline
BSHOH	Bush River Oligohaline
C&DOH_DE	C&D Canal Oligohaline Delaware
C&DOH_MD	C&D Canal Oligohaline Maryland
CB1TF	Northern Chesapeake Bay Tidal Fresh
CB2OH	Northern Chesapeake Bay Oligohaline
CB3MH	Upper Chesapeake Bay Mesohaline
CB4MH	Middle Chesapeake Bay Mesohaline
CB5MH_MD	Lower Chesapeake Bay Mesohaline Maryland
CHOMH1	Choptank River Mesohaline mouth 1
CHOMH2	Choptank River Mesohaline 2
CHOOH	Choptank River Oligohaline
CHOTF	Upper Choptank River Tidal Fresh
CHSMH	Lower Chester River Mesohaline
CHSOH	Middle Chester River Oligohaline
CHSTF	Upper Chester River Tidal Fresh
EASMH	Eastern Bay Mesohaline
ELKOH	Elk River Oligohaline
FSBMH	Fishing Bay Mesohaline
GUNOH	Gunpowder River Oligohaline
HNGMH	Honga River Mesohaline
LCHMH	Little Choptank River Mesohaline
MAGMH	Magothy River Mesohaline
MANMH	Manokin River Mesohaline
MATTF	Mattawoman Creek Tidal Fresh
MIDOH	Middle River Oligohaline
NANMH	Lower Nanticoke River Mesohaline
NANOH	Upper Nanticoke River Oligohaline
NANTF_MD	Upper Nanticoke River Tidal Fresh Maryland
NANTF_DE	Upper Nanticoke River Tidal Fresh Delaware

NORTF	North East River Tidal Fresh
PATMH	Patapsco River Mesohaline
PAXMH	Lower Patuxent River Mesohaline
PAXOH	Middle Patuxent River Oligohaline
PAXTF	Upper Patuxent River Tidal Fresh
PISTF	Piscataway Creek tidal Fresh
POCMH_MD	Lower Pocomoke River Mesohaline Maryland
POCOH_MD	Middle Pocomoke River Oligohaline Maryland
POCOH_VA	Middle Pocomoke River Oligohaline Virginia
POCTF	Upper Pocomoke River Tidal Fresh
POTMH_MD	Lower Potomac River Mesohaline Maryland
POTOH1_MD	Lower Potomac River Oligohaline Maryland
POTOH2_MD	Port Tobacco River Oligohaline Maryland
POTOH3_MD	Nanjemoy Creek Oligohaline Maryland
POTTF_DC	Upper Potomac River Tidal Fresh DC
POTTF_MD	Upper Potomac River Tidal Fresh Maryland
RHDMH	Rhode River Mesohaline
SASOH	Sassafras River Oligohaline
SEVMH	Severn River Mesohaline
SOUMH	South River Mesohaline
TANMH_MD	Tangier Sound Mesohaline Maryland
WBRTF	Western Branch Patuxent River Tidal Fresh
WICMH	Wicomico River Mesohaline
WSTMH	West River Mesohaline

Note: The segment-sheds are identified by the same label and name as the water quality segments to which they drain. While there are 53 Bay water quality segments in Maryland, there are 58 segment-sheds. This is explained by the fact that 5 segment-sheds within Maryland drain to waters of other jurisdictions (Virginia, Delaware, and DC). The tags MH, OH, and TF (Mesohaline, Oligohaline, and Tidal Fresh) refer to the various salinity levels of the water, one of the bases for the spatial segmentation of the Bay and its tidal tributaries into water quality units. For maps of these segment-sheds, see Appendix B-2.

## Table of Naming Conventions

Chesapeake Bay Segment	Bay Segmentation; Segmentshed
Sourcename	Load Source sector
EOS TN 2020 (lbs/yr)	Total Nitrogen Edge Of Stream
EOS TP 2020 (lbs/yr)	Total Phosphorus Edge Of Stream
EOS TSS 2020 (lbs/yr)	Total Suspended Solids Edge Of Stream
DEL TN 2020 (lbs/yr)	Total Nitrogen Delivered to the Bay
DEL TP 2020 (lbs/yr)	Total Phosphorus Delivered to the Bay
DEL TSS 2020 (lbs/yr)	Total Suspended Solids Delivered to the Bay

# Detailed Interim Targets for Maryland's Phase I Watershed Implementation Plan

Appendix B1 - Nonpoint Source Interim Target Loads for Maryland's Phase I Plan

STATE	Chesapeake Bay Segment	Sourcename	EOS TN 2017 (lbs/yr)	EOS TP 2017 (lbs/yr)	EOS TSS 2017 (lbs/yr)	DEL TN 2017 (lbs/yr)	DEL TP 2017 (lbs/yr)	DEL TSS 2017 (lbs/yr)
MD	ANATF_DC	Agriculture	225	30	16,097	225	30	16,097
MD	ANATF_DC	Forest	4,316	232	54,733	4,316	232	54,733
MD	ANATF_DC	NonTidal-Atdep	4	0	0	4	0	0
MD	ANATF_DC	Onsite	480	0		480	0	
<b>MD</b>	<b>ANATF_DC</b>	<b>Subtotal</b>	<b>5,025</b>	<b>262</b>	<b>70,829</b>	<b>5,025</b>	<b>262</b>	<b>70,829</b>
MD	ANATF_MD	Agriculture	55,214	3,484	1,641,556	30,858	3,063	14,047,823
MD	ANATF_MD	Forest	119,421	4,281	1,157,444	74,318	3,794	9,273,042
MD	ANATF_MD	NonTidal-Atdep	1,468	94	0	1,414	94	0
MD	ANATF_MD	Onsite	21,511	0		14,094	0	
<b>MD</b>	<b>ANATF_MD</b>	<b>Subtotal</b>	<b>197,614</b>	<b>7,859</b>	<b>2,799,000</b>	<b>120,684</b>	<b>6,951</b>	<b>23,320,865</b>
MD	BACOH	Agriculture	870	81	59,142	869	81	59,213
MD	BACOH	Forest	10,672	554	258,072	9,809	540	304,408
MD	BACOH	NonTidal-Atdep	1,795	103	0	1,598	99	0
MD	BACOH	Onsite	5,375	0		5,243	0	
<b>MD</b>	<b>BACOH</b>	<b>Subtotal</b>	<b>18,713</b>	<b>737</b>	<b>317,214</b>	<b>17,519</b>	<b>720</b>	<b>363,621</b>
MD	BIGMH	Agriculture	28,261	4,668	302,143	28,261	4,668	302,143
MD	BIGMH	Forest	25,468	2,004	222,794	25,468	2,004	222,794
MD	BIGMH	NonTidal-Atdep	7,348	370	0	7,348	370	0
MD	BIGMH	Onsite	5,981	0		5,981	0	
MD	BIGMH	Urban	3,938	561	61,968	3,938	561	61,968
<b>MD</b>	<b>BIGMH</b>	<b>Subtotal</b>	<b>70,995</b>	<b>7,603</b>	<b>586,905</b>	<b>70,995</b>	<b>7,603</b>	<b>586,905</b>
MD	BOHOH	Agriculture	118,721	14,509	2,824,097	118,721	14,509	2,824,097
MD	BOHOH	Forest	24,850	1,614	237,365	24,850	1,614	237,365
MD	BOHOH	NonTidal-Atdep	1,839	106	0	1,839	106	0
MD	BOHOH	Onsite	13,328	0		13,328	0	
<b>MD</b>	<b>BOHOH</b>	<b>Subtotal</b>	<b>158,738</b>	<b>16,229</b>	<b>3,061,462</b>	<b>158,738</b>	<b>16,229</b>	<b>3,061,462</b>
MD	BSHOH	Agriculture	161,717	7,169	9,235,248	127,910	6,492	10,237,605
MD	BSHOH	Forest	131,587	3,446	5,131,914	108,742	3,166	5,756,944
MD	BSHOH	NonTidal-Atdep	3,773	237	0	3,550	225	0
MD	BSHOH	Onsite	100,779	0		77,709	0	
<b>MD</b>	<b>BSHOH</b>	<b>Subtotal</b>	<b>397,855</b>	<b>10,851</b>	<b>14,367,162</b>	<b>317,911</b>	<b>9,883</b>	<b>15,994,549</b>
MD	C&DOH_DE	Agriculture	117	15	3,693	117	15	3,693
MD	C&DOH_DE	Forest	10	1	112	10	1	112
MD	C&DOH_DE	Onsite	6	0		6	0	
<b>MD</b>	<b>C&amp;DOH_DE</b>	<b>Subtotal</b>	<b>133</b>	<b>16</b>	<b>3,805</b>	<b>133</b>	<b>16</b>	<b>3,805</b>

Appendix B1 - Nonpoint Source Interim Target Loads for Maryland's Phase I Plan

STATE	Chesapeake Bay Segment	Sourcename	EOS TN 2017 (lbs/yr)	EOS TP 2017 (lbs/yr)	EOS TSS 2017 (lbs/yr)	DEL TN 2017 (lbs/yr)	DEL TP 2017 (lbs/yr)	DEL TSS 2017 (lbs/yr)
MD	C&DOH_MD	Agriculture	26,794	3,393	831,054	26,794	3,393	831,054
MD	C&DOH_MD	Forest	9,612	624	107,143	9,612	624	107,143
MD	C&DOH_MD	NonTidal-Atdep	1,798	103	0	1,798	103	0
MD	C&DOH_MD	Onsite	6,929	0		6,929	0	
<b>MD</b>	<b>C&amp;DOH_MD</b>	<b>Subtotal</b>	<b>45,132</b>	<b>4,120</b>	<b>938,197</b>	<b>45,132</b>	<b>4,120</b>	<b>938,197</b>
MD	CB1TF	Agriculture	1,017,016	45,164	56,545,004	868,523	38,863	51,688,733
MD	CB1TF	Forest	505,161	12,437	16,643,483	442,351	10,914	15,115,298
MD	CB1TF	NonTidal-Atdep	58,037	3,481	0	54,501	3,111	0
MD	CB1TF	Onsite	180,154	0		157,757	0	
<b>MD</b>	<b>CB1TF</b>	<b>Subtotal</b>	<b>1,760,368</b>	<b>61,081</b>	<b>73,188,488</b>	<b>1,523,131</b>	<b>52,889</b>	<b>66,804,031</b>
MD	CB2OH	Agriculture	242,190	22,532	5,719,492	242,190	22,532	5,719,492
MD	CB2OH	Forest	66,081	3,884	1,247,137	66,081	3,884	1,247,137
MD	CB2OH	NonTidal-Atdep	7,864	475	0	7,864	475	0
MD	CB2OH	Onsite	12,064	0		12,064	0	
MD	CB2OH	Urban	2,403	335	56,589	2,403	335	56,589
<b>MD</b>	<b>CB2OH</b>	<b>Subtotal</b>	<b>330,601</b>	<b>27,226</b>	<b>7,023,218</b>	<b>330,601</b>	<b>27,226</b>	<b>7,023,218</b>
MD	CB3MH	Agriculture	64,902	6,009	1,549,259	64,902	6,009	1,549,259
MD	CB3MH	Forest	13,139	838	211,059	13,139	838	211,059
MD	CB3MH	NonTidal-Atdep	3,722	222	0	3,722	222	0
MD	CB3MH	Onsite	6,534	0		6,534	0	
MD	CB3MH	Urban	4,392	688	159,403	4,392	688	159,403
<b>MD</b>	<b>CB3MH</b>	<b>Subtotal</b>	<b>92,689</b>	<b>7,757</b>	<b>1,919,722</b>	<b>92,689</b>	<b>7,757</b>	<b>1,919,722</b>
MD	CB4MH	Agriculture	51,850	6,173	1,876,168	51,850	6,173	1,876,168
MD	CB4MH	Forest	82,569	5,444	1,126,102	82,569	5,444	1,126,102
MD	CB4MH	NonTidal-Atdep	13,417	884	0	13,417	884	0
MD	CB4MH	Onsite	120,074	0		120,074	0	
MD	CB4MH	Urban	24,743	3,587	705,299	24,743	3,587	705,299
<b>MD</b>	<b>CB4MH</b>	<b>Subtotal</b>	<b>292,653</b>	<b>16,089</b>	<b>3,707,569</b>	<b>292,653</b>	<b>16,089</b>	<b>3,707,569</b>
MD	CB5MH_MD	Agriculture	23,236	3,041	751,927	23,236	3,041	751,927
MD	CB5MH_MD	Forest	25,639	1,744	514,071	25,639	1,744	514,071
MD	CB5MH_MD	NonTidal-Atdep	8,807	639	0	8,807	639	0
MD	CB5MH_MD	Onsite	37,713	0		37,713	0	
MD	CB5MH_MD	Urban	13,648	2,512	443,352	13,648	2,512	443,352
<b>MD</b>	<b>CB5MH_MD</b>	<b>Subtotal</b>	<b>109,042</b>	<b>7,936</b>	<b>1,709,351</b>	<b>109,042</b>	<b>7,936</b>	<b>1,709,351</b>

Appendix B1 - Nonpoint Source Interim Target Loads for Maryland's Phase I Plan

STATE	Chesapeake Bay Segment	Sourcename	EOS TN 2017 (lbs/yr)	EOS TP 2017 (lbs/yr)	EOS TSS 2017 (lbs/yr)	DEL TN 2017 (lbs/yr)	DEL TP 2017 (lbs/yr)	DEL TSS 2017 (lbs/yr)
MD	CHOMH1	Agriculture	205,606	27,053	3,222,870	205,606	27,053	3,222,870
MD	CHOMH1	Forest	33,747	2,766	504,695	33,747	2,766	504,695
MD	CHOMH1	NonTidal-Atdep	9,367	619	0	9,367	619	0
MD	CHOMH1	Onsite	35,813	0		35,813	0	
MD	CHOMH1	Urban	51,568	7,970	1,443,862	51,568	7,970	1,443,862
<b>MD</b>	<b>CHOMH1</b>	<b>Subtotal</b>	<b>336,101</b>	<b>38,408</b>	<b>5,171,426</b>	<b>336,101</b>	<b>38,408</b>	<b>5,171,426</b>
MD	CHOMH2	Agriculture	233,275	26,897	2,508,010	233,275	26,897	2,508,010
MD	CHOMH2	Forest	23,101	1,874	258,218	23,101	1,874	258,218
MD	CHOMH2	NonTidal-Atdep	4,801	317	0	4,801	317	0
MD	CHOMH2	Onsite	13,897	0		13,897	0	
MD	CHOMH2	Urban	12,448	1,920	271,352	12,448	1,920	271,352
<b>MD</b>	<b>CHOMH2</b>	<b>Subtotal</b>	<b>287,522</b>	<b>31,009</b>	<b>3,037,580</b>	<b>287,522</b>	<b>31,009</b>	<b>3,037,580</b>
MD	CHOOH	Agriculture	478,001	55,787	3,445,972	478,001	55,787	3,445,972
MD	CHOOH	Forest	48,575	3,779	350,390	48,575	3,779	350,390
MD	CHOOH	NonTidal-Atdep	6,597	373	0	6,597	373	0
MD	CHOOH	Onsite	26,101	0		26,101	0	
MD	CHOOH	Urban	12,772	1,932	182,065	12,772	1,932	182,065
<b>MD</b>	<b>CHOOH</b>	<b>Subtotal</b>	<b>572,045</b>	<b>61,871</b>	<b>3,978,427</b>	<b>572,045</b>	<b>61,871</b>	<b>3,978,427</b>
MD	CHOTF	Agriculture	1,234,353	124,846	11,520,446	1,073,654	115,928	15,208,124
MD	CHOTF	Forest	153,783	10,787	1,187,930	133,029	9,994	1,544,170
MD	CHOTF	NonTidal-Atdep	5,164	251	0	4,552	233	0
MD	CHOTF	Onsite	57,460	0		52,742	0	
MD	CHOTF	Urban	33,059	4,707	574,145	30,906	4,548	639,300
<b>MD</b>	<b>CHOTF</b>	<b>Subtotal</b>	<b>1,483,820</b>	<b>140,590</b>	<b>13,282,521</b>	<b>1,294,884</b>	<b>130,703</b>	<b>17,391,595</b>
MD	CHSMH	Agriculture	445,599	42,014	10,222,212	445,599	42,014	10,222,212
MD	CHSMH	Forest	61,646	3,838	884,301	61,646	3,838	884,301
MD	CHSMH	NonTidal-Atdep	7,837	469	0	7,837	469	0
MD	CHSMH	Onsite	15,644	0		15,644	0	
MD	CHSMH	Urban	20,553	3,140	658,958	20,553	3,140	658,958
<b>MD</b>	<b>CHSMH</b>	<b>Subtotal</b>	<b>551,278</b>	<b>49,461</b>	<b>11,765,471</b>	<b>551,278</b>	<b>49,461</b>	<b>11,765,471</b>

Appendix B1 - Nonpoint Source Interim Target Loads for Maryland's Phase I Plan

STATE	Chesapeake Bay Segment	Sourcename	EOS TN 2017 (lbs/yr)	EOS TP 2017 (lbs/yr)	EOS TSS 2017 (lbs/yr)	DEL TN 2017 (lbs/yr)	DEL TP 2017 (lbs/yr)	DEL TSS 2017 (lbs/yr)
MD	CHSOH	Agriculture	560,342	53,737	8,081,145	560,342	53,737	8,081,145
MD	CHSOH	Forest	53,506	3,298	479,186	53,506	3,298	479,186
MD	CHSOH	NonTidal-Atdep	4,697	280	0	4,697	280	0
MD	CHSOH	Onsite	20,405	0		20,405	0	
MD	CHSOH	Urban	14,461	2,249	344,051	14,461	2,249	344,051
<b>MD</b>	<b>CHSOH</b>	<b>Subtotal</b>	<b>653,411</b>	<b>59,564</b>	<b>8,904,382</b>	<b>653,411</b>	<b>59,564</b>	<b>8,904,382</b>
MD	CHSTF	Agriculture	482,314	46,851	8,148,067	422,849	43,646	10,171,232
MD	CHSTF	Forest	70,527	4,366	670,821	60,563	4,020	853,533
MD	CHSTF	NonTidal-Atdep	2,992	180	0	2,658	168	0
MD	CHSTF	Onsite	14,209	0		13,061	0	
MD	CHSTF	Urban	10,143	1,410	202,804	8,925	1,313	250,163
<b>MD</b>	<b>CHSTF</b>	<b>Subtotal</b>	<b>580,184</b>	<b>52,806</b>	<b>9,021,692</b>	<b>508,057</b>	<b>49,147</b>	<b>11,274,929</b>
MD	EASMH	Agriculture	484,649	55,531	7,604,613	484,649	55,531	7,604,613
MD	EASMH	Forest	73,064	5,030	963,217	73,064	5,030	963,217
MD	EASMH	NonTidal-Atdep	9,549	603	0	9,549	603	0
MD	EASMH	Onsite	50,351	0		50,351	0	
MD	EASMH	Urban	57,997	8,230	1,602,138	57,997	8,230	1,602,138
<b>MD</b>	<b>EASMH</b>	<b>Subtotal</b>	<b>675,611</b>	<b>69,394</b>	<b>10,169,967</b>	<b>675,611</b>	<b>69,394</b>	<b>10,169,967</b>
MD	ELKOH	Agriculture	164,377	13,631	5,192,355	157,576	13,370	5,563,578
MD	ELKOH	Forest	97,244	4,630	1,176,271	93,707	4,551	1,251,469
MD	ELKOH	NonTidal-Atdep	3,586	206	0	3,586	206	0
MD	ELKOH	Onsite	67,705	0		66,540	0	
<b>MD</b>	<b>ELKOH</b>	<b>Subtotal</b>	<b>332,912</b>	<b>18,467</b>	<b>6,368,625</b>	<b>321,409</b>	<b>18,127</b>	<b>6,815,047</b>
MD	FSBMH	Agriculture	377,397	47,659	3,035,532	365,584	46,895	3,443,368
MD	FSBMH	Forest	174,931	14,062	1,070,049	172,739	13,972	1,121,553
MD	FSBMH	NonTidal-Atdep	161,723	10,762	0	161,723	10,762	0
MD	FSBMH	Onsite	11,063	0		10,735	0	
MD	FSBMH	Urban	10,459	1,669	99,817	10,381	1,662	105,731
<b>MD</b>	<b>FSBMH</b>	<b>Subtotal</b>	<b>735,574</b>	<b>74,153</b>	<b>4,205,398</b>	<b>721,162</b>	<b>73,290</b>	<b>4,670,651</b>
MD	GUNOH	Agriculture	856,703	27,993	63,262,981	415,751	14,155	26,103,085
MD	GUNOH	Forest	575,113	11,968	26,010,248	327,980	6,872	12,209,276
MD	GUNOH	NonTidal-Atdep	38,422	2,274	0	19,345	1,096	0
MD	GUNOH	Onsite	275,156	0		174,187	0	
<b>MD</b>	<b>GUNOH</b>	<b>Subtotal</b>	<b>1,745,395</b>	<b>42,235</b>	<b>89,273,229</b>	<b>937,264</b>	<b>22,122</b>	<b>38,312,361</b>



Appendix B1 - Nonpoint Source Interim Target Loads for Maryland's Phase I Plan

STATE	Chesapeake Bay Segment	Sourcename	EOS TN 2017 (lbs\yr)	EOS TP 2017 (lbs\yr)	EOS TSS 2017 (lbs\yr)	DEL TN 2017 (lbs\yr)	DEL TP 2017 (lbs\yr)	DEL TSS 2017 (lbs\yr)
MD	HNGMH	Agriculture	11,466	1,456	189,941	11,466	1,456	189,941
MD	HNGMH	Forest	24,564	1,975	290,247	24,564	1,975	290,247
MD	HNGMH	NonTidal-Atdep	8,264	550	0	8,264	550	0
MD	HNGMH	Onsite	4,174	0		4,174	0	
MD	HNGMH	Urban	5,373	933	139,784	5,373	933	139,784
<b>MD</b>	<b>HNGMH</b>	<b>Subtotal</b>	<b>53,841</b>	<b>4,913</b>	<b>619,972</b>	<b>53,841</b>	<b>4,913</b>	<b>619,972</b>
MD	LCHMH	Agriculture	122,828	15,381	2,322,193	122,828	15,381	2,322,193
MD	LCHMH	Forest	48,566	3,904	638,923	48,566	3,904	638,923
MD	LCHMH	NonTidal-Atdep	16,754	1,115	0	16,754	1,115	0
MD	LCHMH	Onsite	10,542	0		10,542	0	
MD	LCHMH	Urban	8,611	1,348	251,854	8,611	1,348	251,854
<b>MD</b>	<b>LCHMH</b>	<b>Subtotal</b>	<b>207,301</b>	<b>21,748</b>	<b>3,212,971</b>	<b>207,301</b>	<b>21,748</b>	<b>3,212,971</b>
MD	MAGMH	Agriculture	2,344	319	109,654	2,344	319	109,654
MD	MAGMH	Forest	20,096	1,389	431,808	20,096	1,389	431,808
MD	MAGMH	NonTidal-Atdep	1,648	101	0	1,648	101	0
MD	MAGMH	Onsite	89,125	0		89,125	0	
<b>MD</b>	<b>MAGMH</b>	<b>Subtotal</b>	<b>113,214</b>	<b>1,808</b>	<b>541,462</b>	<b>113,214</b>	<b>1,808</b>	<b>541,462</b>
MD	MANMH	Agriculture	84,670	13,900	585,144	84,670	13,900	585,144
MD	MANMH	Forest	73,395	5,776	455,816	73,395	5,776	455,816
MD	MANMH	NonTidal-Atdep	24,474	1,232	0	24,474	1,232	0
MD	MANMH	Onsite	11,047	0		11,047	0	
MD	MANMH	Urban	13,694	2,279	183,923	13,694	2,279	183,923
<b>MD</b>	<b>MANMH</b>	<b>Subtotal</b>	<b>207,280</b>	<b>23,187</b>	<b>1,224,883</b>	<b>207,280</b>	<b>23,187</b>	<b>1,224,883</b>
MD	MATTF	Agriculture	26,225	3,465	2,377,595	16,535	2,696	2,233,403
MD	MATTF	Forest	84,999	5,109	1,642,087	61,422	4,282	1,576,619
MD	MATTF	NonTidal-Atdep	1,815	134	0	1,312	113	0
MD	MATTF	Onsite	98,017	0		61,871	0	
<b>MD</b>	<b>MATTF</b>	<b>Subtotal</b>	<b>211,056</b>	<b>8,708</b>	<b>4,019,682</b>	<b>141,139</b>	<b>7,091</b>	<b>3,810,022</b>
MD	MIDOH	Agriculture	794	73	50,379	794	73	50,379
MD	MIDOH	Forest	6,273	321	176,011	6,273	321	176,011
MD	MIDOH	NonTidal-Atdep	694	41	0	694	41	0
MD	MIDOH	Onsite	14,214	0		14,214	0	
<b>MD</b>	<b>MIDOH</b>	<b>Subtotal</b>	<b>21,975</b>	<b>434</b>	<b>226,391</b>	<b>21,975</b>	<b>434</b>	<b>226,391</b>

Appendix B1 - Nonpoint Source Interim Target Loads for Maryland's Phase I Plan

STATE	Chesapeake Bay Segment	Sourcename	EOS TN 2017 (lbs/yr)	EOS TP 2017 (lbs/yr)	EOS TSS 2017 (lbs/yr)	DEL TN 2017 (lbs/yr)	DEL TP 2017 (lbs/yr)	DEL TSS 2017 (lbs/yr)
MD	NANMH	Agriculture	43,103	5,720	367,662	43,103	5,720	367,662
MD	NANMH	Forest	51,545	3,267	298,679	51,545	3,267	298,679
MD	NANMH	NonTidal-Atdep	9,980	551	0	9,980	551	0
MD	NANMH	Onsite	10,261	0		10,261	0	
MD	NANMH	Urban	4,994	688	70,484	4,994	688	70,484
<b>MD</b>	<b>NANMH</b>	<b>Subtotal</b>	<b>119,883</b>	<b>10,225</b>	<b>736,825</b>	<b>119,883</b>	<b>10,225</b>	<b>736,825</b>
MD	NANOH	Agriculture	554,092	63,827	5,093,263	528,233	61,815	5,577,853
MD	NANOH	Forest	149,909	10,341	1,033,916	145,168	10,058	1,125,157
MD	NANOH	NonTidal-Atdep	17,658	977	0	17,543	972	0
MD	NANOH	Onsite	32,445	0		31,845	0	
MD	NANOH	Urban	16,200	2,599	323,230	15,965	2,573	331,820
<b>MD</b>	<b>NANOH</b>	<b>Subtotal</b>	<b>770,303</b>	<b>77,744</b>	<b>6,450,409</b>	<b>738,755</b>	<b>75,418</b>	<b>7,034,830</b>
MD	NANTF_DE	Agriculture	13,721	1,568	86,646	13,721	1,568	86,646
MD	NANTF_DE	Forest	4,239	272	13,206	4,239	272	13,206
MD	NANTF_DE	NonTidal-Atdep	46	2	0	46	2	0
MD	NANTF_DE	Onsite	661	0		661	0	
MD	NANTF_DE	Urban	454	69	5,282	454	69	5,282
<b>MD</b>	<b>NANTF_DE</b>	<b>Subtotal</b>	<b>19,121</b>	<b>1,911</b>	<b>105,134</b>	<b>19,121</b>	<b>1,911</b>	<b>105,134</b>
MD	NANTF_MD	Agriculture	49,695	5,757	412,930	49,695	5,757	412,930
MD	NANTF_MD	Forest	8,718	669	63,621	8,718	669	63,621
MD	NANTF_MD	NonTidal-Atdep	366	24	0	366	24	0
MD	NANTF_MD	Onsite	2,591	0		2,591	0	
MD	NANTF_MD	Urban	1,335	214	31,118	1,335	214	31,118
<b>MD</b>	<b>NANTF_MD</b>	<b>Subtotal</b>	<b>62,705</b>	<b>6,665</b>	<b>507,669</b>	<b>62,705</b>	<b>6,665</b>	<b>507,669</b>
MD	NORTF	Agriculture	133,923	5,846	7,731,623	107,320	5,189	8,551,391
MD	NORTF	Forest	69,107	2,285	1,350,524	58,239	2,133	1,477,059
MD	NORTF	NonTidal-Atdep	2,011	116	0	1,804	109	0
MD	NORTF	Onsite	32,703	0		28,433	0	
<b>MD</b>	<b>NORTF</b>	<b>Subtotal</b>	<b>237,743</b>	<b>8,247</b>	<b>9,082,147</b>	<b>195,796</b>	<b>7,430</b>	<b>10,028,450</b>
MD	PATMH	Agriculture	928,617	29,820	40,923,425	246,108	9,248	17,262,310
MD	PATMH	Forest	521,074	13,540	23,752,229	232,723	7,101	13,308,933
MD	PATMH	NonTidal-Atdep	34,820	2,078	0	10,360	622	0
MD	PATMH	Onsite	422,312	0		203,414	0	
<b>MD</b>	<b>PATMH</b>	<b>Subtotal</b>	<b>1,906,823</b>	<b>45,438</b>	<b>64,675,654</b>	<b>692,605</b>	<b>16,972</b>	<b>30,571,242</b>

Appendix B1 - Nonpoint Source Interim Target Loads for Maryland's Phase I Plan

STATE	Chesapeake Bay Segment	Sourcename	EOS TN 2017 (lbs/yr)	EOS TP 2017 (lbs/yr)	EOS TSS 2017 (lbs/yr)	DEL TN 2017 (lbs/yr)	DEL TP 2017 (lbs/yr)	DEL TSS 2017 (lbs/yr)
MD	PAXMH	Agriculture	127,436	15,862	5,273,622	127,436	15,862	5,273,622
MD	PAXMH	Forest	160,053	10,270	2,128,647	160,053	10,270	2,128,647
MD	PAXMH	NonTidal-Atdep	5,341	394	0	5,341	394	0
MD	PAXMH	Onsite	192,772	0		192,772	0	
MD	PAXMH	Urban	43,149	6,889	1,096,749	43,149	6,889	1,096,749
<b>MD</b>	<b>PAXMH</b>	<b>Subtotal</b>	<b>528,752</b>	<b>33,416</b>	<b>8,499,018</b>	<b>528,752</b>	<b>33,416</b>	<b>8,499,018</b>
MD	PAXOH	Agriculture	100,845	12,567	6,506,471	99,703	12,516	6,494,723
MD	PAXOH	Forest	103,755	6,237	1,198,830	101,284	6,174	1,193,488
MD	PAXOH	NonTidal-Atdep	4,455	313	0	4,437	312	0
MD	PAXOH	Onsite	92,149	0		89,850	0	
MD	PAXOH	Urban	28,357	3,686	445,661	27,669	3,646	442,701
<b>MD</b>	<b>PAXOH</b>	<b>Subtotal</b>	<b>329,562</b>	<b>22,804</b>	<b>8,150,962</b>	<b>322,943</b>	<b>22,648</b>	<b>8,130,913</b>
MD	PAXTF	Agriculture	574,386	50,712	43,049,746	257,825	29,921	23,897,955
MD	PAXTF	Forest	592,997	25,257	22,772,824	283,571	14,905	14,912,980
MD	PAXTF	NonTidal-Atdep	22,974	1,469	0	10,201	744	0
MD	PAXTF	Onsite	250,669	0		128,495	0	
MD	PAXTF	Urban	3,895	485	65,151	3,895	485	65,151
<b>MD</b>	<b>PAXTF</b>	<b>Subtotal</b>	<b>1,444,920</b>	<b>77,923</b>	<b>65,887,721</b>	<b>683,988</b>	<b>46,054</b>	<b>38,876,086</b>
MD	PISTF	Agriculture	22,238	2,910	2,390,253	18,925	2,732	2,272,572
MD	PISTF	Forest	55,924	3,006	1,032,291	47,670	2,824	981,426
MD	PISTF	NonTidal-Atdep	607	39	0	528	37	0
MD	PISTF	Onsite	18,772	0		15,418	0	
<b>MD</b>	<b>PISTF</b>	<b>Subtotal</b>	<b>97,541</b>	<b>5,955</b>	<b>3,422,544</b>	<b>82,542</b>	<b>5,593</b>	<b>3,253,998</b>
MD	POCMH_MD	Agriculture	40,428	6,670	493,891	33,302	6,223	645,262
MD	POCMH_MD	Forest	43,556	3,428	405,719	38,835	3,287	474,118
MD	POCMH_MD	NonTidal-Atdep	9,639	485	0	9,153	476	0
MD	POCMH_MD	Onsite	5,591	0		5,067	0	
MD	POCMH_MD	Urban	3,864	581	64,704	3,628	566	73,049
<b>MD</b>	<b>POCMH_MD</b>	<b>Subtotal</b>	<b>103,078</b>	<b>11,164</b>	<b>964,314</b>	<b>89,985</b>	<b>10,552</b>	<b>1,192,429</b>
MD	POCOH_MD	Agriculture	40,737	5,247	391,118	40,737	5,247	391,118
MD	POCOH_MD	Forest	19,699	1,423	131,281	19,699	1,423	131,281
MD	POCOH_MD	NonTidal-Atdep	2,796	141	0	2,796	141	0
MD	POCOH_MD	Onsite	1,996	0		1,996	0	
MD	POCOH_MD	Urban	744	119	17,631	744	119	17,631
<b>MD</b>	<b>POCOH_MD</b>	<b>Subtotal</b>	<b>65,973</b>	<b>6,930</b>	<b>540,030</b>	<b>65,973</b>	<b>6,930</b>	<b>540,030</b>

Appendix B1 - Nonpoint Source Interim Target Loads for Maryland's Phase I Plan

STATE	Chesapeake Bay Segment	Sourcename	EOS TN 2017 (lbs/yr)	EOS TP 2017 (lbs/yr)	EOS TSS 2017 (lbs/yr)	DEL TN 2017 (lbs/yr)	DEL TP 2017 (lbs/yr)	DEL TSS 2017 (lbs/yr)
MD	POCOH_VA	Agriculture	44,001	6,074	500,583	44,001	6,074	500,583
MD	POCOH_VA	Forest	16,452	1,008	73,549	16,452	1,008	73,549
MD	POCOH_VA	NonTidal-Atdep	231	12	0	231	12	0
MD	POCOH_VA	Onsite	1,470	0		1,470	0	
MD	POCOH_VA	Urban	1,304	277	42,092	1,304	277	42,092
<b>MD</b>	<b>POCOH_VA</b>	<b>Subtotal</b>	<b>63,458</b>	<b>7,370</b>	<b>616,224</b>	<b>63,458</b>	<b>7,370</b>	<b>616,224</b>
MD	POCTF	Agriculture	558,993	74,207	6,871,908	446,441	64,500	7,297,193
MD	POCTF	Forest	346,630	21,406	1,804,026	274,422	18,800	2,088,403
MD	POCTF	NonTidal-Atdep	8,407	421	0	7,851	402	0
MD	POCTF	Onsite	34,449	0		27,538	0	
MD	POCTF	Urban	25,759	4,132	529,957	21,290	3,694	535,672
<b>MD</b>	<b>POCTF</b>	<b>Subtotal</b>	<b>974,237</b>	<b>100,165</b>	<b>9,205,891</b>	<b>777,543</b>	<b>87,396</b>	<b>9,921,268</b>
MD	POTMH_MD	Agriculture	477,055	61,942	17,994,066	427,434	59,915	33,005,854
MD	POTMH_MD	Forest	378,671	24,480	7,748,299	326,298	23,158	17,028,130
MD	POTMH_MD	NonTidal-Atdep	14,624	1,143	0	13,704	1,120	0
MD	POTMH_MD	Onsite	222,954	0		193,326	0	
MD	POTMH_MD	Urban	64,330	11,285	2,022,758	58,336	11,016	4,742,371
<b>MD</b>	<b>POTMH_MD</b>	<b>Subtotal</b>	<b>1,157,634</b>	<b>98,850</b>	<b>27,765,123</b>	<b>1,019,098</b>	<b>95,209</b>	<b>54,776,356</b>
MD	POTOH1_MD	Agriculture	11,902	1,673	849,578	11,902	1,673	849,578
MD	POTOH1_MD	Forest	30,134	1,896	641,528	30,134	1,896	641,528
MD	POTOH1_MD	NonTidal-Atdep	1,839	146	0	1,839	146	0
MD	POTOH1_MD	Onsite	2,977	0		2,977	0	
<b>MD</b>	<b>POTOH1_MD</b>	<b>Subtotal</b>	<b>46,852</b>	<b>3,715</b>	<b>1,491,106</b>	<b>46,852</b>	<b>3,715</b>	<b>1,491,106</b>
MD	POTOH2_MD	Agriculture	21,704	2,981	1,182,081	21,704	2,981	1,182,081
MD	POTOH2_MD	Forest	36,905	2,322	582,264	36,905	2,322	582,264
MD	POTOH2_MD	NonTidal-Atdep	532	42	0	532	42	0
MD	POTOH2_MD	Onsite	31,912	0		31,912	0	
<b>MD</b>	<b>POTOH2_MD</b>	<b>Subtotal</b>	<b>91,054</b>	<b>5,345</b>	<b>1,764,345</b>	<b>91,054</b>	<b>5,345</b>	<b>1,764,345</b>
MD	POTOH3_MD	Agriculture	27,403	3,743	1,530,079	26,024	3,686	1,528,011
MD	POTOH3_MD	Forest	73,307	4,611	1,329,259	66,114	4,470	1,325,162
MD	POTOH3_MD	NonTidal-Atdep	3,897	310	0	3,852	309	0
MD	POTOH3_MD	Onsite	14,607	0		13,082	0	
<b>MD</b>	<b>POTOH3_MD</b>	<b>Subtotal</b>	<b>119,214</b>	<b>8,665</b>	<b>2,859,338</b>	<b>109,072</b>	<b>8,465</b>	<b>2,853,173</b>

Appendix B1 - Nonpoint Source Interim Target Loads for Maryland's Phase I Plan

STATE	Chesapeake Bay Segment	Sourcename	EOS TN 2017 (lbs/yr)	EOS TP 2017 (lbs/yr)	EOS TSS 2017 (lbs/yr)	DEL TN 2017 (lbs/yr)	DEL TP 2017 (lbs/yr)	DEL TSS 2017 (lbs/yr)
MD	POTTF_DC	Agriculture	23,214	810	3,852,946	9,426	571	3,214,382
MD	POTTF_DC	Forest	47,671	1,172	2,997,577	20,888	855	2,508,575
MD	POTTF_DC	NonTidal-Atdep	1,586	101	0	916	79	0
MD	POTTF_DC	Onsite	17,943	0		7,378	0	
<b>MD</b>	<b>POTTF_DC</b>	<b>Subtotal</b>	<b>90,414</b>	<b>2,083</b>	<b>6,850,523</b>	<b>38,608</b>	<b>1,505</b>	<b>5,722,957</b>
MD	POTTF_MD	Agriculture	12,391,604	588,013	522,035,785	6,823,107	311,770	345,812,382
MD	POTTF_MD	Forest	5,644,926	188,518	97,762,233	2,634,344	95,250	63,515,317
MD	POTTF_MD	NonTidal-Atdep	192,455	13,118	0	130,583	6,800	0
MD	POTTF_MD	Onsite	851,731	0		509,124	0	
MD	POTTF_MD	Urban	96,471	9,084	4,091,397	24,064	4,338	2,598,747
<b>MD</b>	<b>POTTF_MD</b>	<b>Subtotal</b>	<b>19,177,187</b>	<b>798,733</b>	<b>623,889,414</b>	<b>10,121,222</b>	<b>418,158</b>	<b>411,926,447</b>
MD	RHDMH	Agriculture	9,660	1,347	309,051	9,660	1,347	309,051
MD	RHDMH	Forest	10,732	742	186,763	10,732	742	186,763
MD	RHDMH	NonTidal-Atdep	981	60	0	981	60	0
MD	RHDMH	Onsite	3,424	0		3,424	0	
<b>MD</b>	<b>RHDMH</b>	<b>Subtotal</b>	<b>24,798</b>	<b>2,149</b>	<b>495,815</b>	<b>24,798</b>	<b>2,149</b>	<b>495,815</b>
MD	SASOH	Agriculture	281,088	29,161	7,251,490	281,088	29,161	7,251,490
MD	SASOH	Forest	39,499	2,586	514,376	39,499	2,586	514,376
MD	SASOH	NonTidal-Atdep	4,477	262	0	4,477	262	0
MD	SASOH	Onsite	14,877	0		14,877	0	
MD	SASOH	Urban	4,267	607	86,539	4,267	607	86,539
<b>MD</b>	<b>SASOH</b>	<b>Subtotal</b>	<b>344,208</b>	<b>32,615</b>	<b>7,852,404</b>	<b>344,208</b>	<b>32,615</b>	<b>7,852,404</b>
MD	SEVMH	Agriculture	9,121	1,219	307,999	9,121	1,219	307,999
MD	SEVMH	Forest	34,990	2,418	667,733	34,990	2,418	667,733
MD	SEVMH	NonTidal-Atdep	1,621	99	0	1,621	99	0
MD	SEVMH	Onsite	97,448	0		97,448	0	
<b>MD</b>	<b>SEVMH</b>	<b>Subtotal</b>	<b>143,180</b>	<b>3,736</b>	<b>975,732</b>	<b>143,180</b>	<b>3,736</b>	<b>975,732</b>
MD	SOUMH	Agriculture	19,728	2,740	529,213	19,728	2,740	529,213
MD	SOUMH	Forest	40,538	2,802	596,248	40,538	2,802	596,248
MD	SOUMH	NonTidal-Atdep	2,577	157	0	2,577	157	0
MD	SOUMH	Onsite	55,917	0		55,917	0	
<b>MD</b>	<b>SOUMH</b>	<b>Subtotal</b>	<b>118,759</b>	<b>5,700</b>	<b>1,125,461</b>	<b>118,759</b>	<b>5,700</b>	<b>1,125,461</b>

Appendix B1 - Nonpoint Source Interim Target Loads for Maryland's Phase I Plan

STATE	Chesapeake Bay Segment	Sourcename	EOS TN 2017 (lbs\yr)	EOS TP 2017 (lbs\yr)	EOS TSS 2017 (lbs\yr)	DEL TN 2017 (lbs\yr)	DEL TP 2017 (lbs\yr)	DEL TSS 2017 (lbs\yr)
MD	TANMH_MD	Agriculture	4,756	788	56,886	4,756	788	56,886
MD	TANMH_MD	Forest	31,847	2,507	240,337	31,847	2,507	240,337
MD	TANMH_MD	NonTidal-Atdep	33,834	1,783	0	33,834	1,783	0
MD	TANMH_MD	Onsite	11,026	0		11,026	0	
MD	TANMH_MD	Urban	11,061	1,723	276,116	11,061	1,723	276,116
<b>MD</b>	<b>TANMH_MD</b>	<b>Subtotal</b>	<b>92,525</b>	<b>6,802</b>	<b>573,338</b>	<b>92,525</b>	<b>6,802</b>	<b>573,338</b>
MD	WBRTF	Agriculture	33,205	4,486	3,155,359	28,609	3,650	8,108,217
MD	WBRTF	Forest	64,259	3,453	988,211	55,365	2,810	2,539,373
MD	WBRTF	NonTidal-Atdep	2,176	140	0	1,875	114	0
MD	WBRTF	Onsite	31,277	0		26,982	0	
<b>MD</b>	<b>WBRTF</b>	<b>Subtotal</b>	<b>130,917</b>	<b>8,078</b>	<b>4,143,570</b>	<b>112,831</b>	<b>6,573</b>	<b>10,647,590</b>
MD	WICMH	Agriculture	207,990	28,977	2,151,565	198,122	28,225	2,469,890
MD	WICMH	Forest	172,588	11,056	930,619	166,519	10,823	1,028,468
MD	WICMH	NonTidal-Atdep	26,516	1,203	0	25,955	1,187	0
MD	WICMH	Onsite	144,800	0		136,210	0	
MD	WICMH	Urban	76,963	12,998	1,702,961	72,032	12,422	2,120,786
<b>MD</b>	<b>WICMH</b>	<b>Subtotal</b>	<b>628,856</b>	<b>54,234</b>	<b>4,785,146</b>	<b>598,839</b>	<b>52,656</b>	<b>5,619,145</b>
MD	WSTMH	Agriculture	12,456	1,714	492,646	12,456	1,714	492,646
MD	WSTMH	Forest	8,893	615	176,427	8,893	615	176,427
MD	WSTMH	NonTidal-Atdep	597	36	0	597	36	0
MD	WSTMH	Onsite	3,072	0		3,072	0	
<b>MD</b>	<b>WSTMH</b>	<b>Subtotal</b>	<b>25,018</b>	<b>2,366</b>	<b>669,073</b>	<b>25,018</b>	<b>2,366</b>	<b>669,073</b>

Appendix B1 - Point Source Interim Target Loads for Maryland's Phase I Plan

STATE	Chesapeake Bay Segment	Sourcename	Type	NPDES	Facility	EOS TN 2017 (lbs\yr)	EOS TP 2017 (lbs\yr)	EOS TSS 2017 (lbs\yr)	DEL TN 2017 (lbs\yr)	DEL TP 2017 (lbs\yr)	DEL TSS 2017 (lbs\yr)
MD	ANATF_DC	Stormwater-MS4	--		Aggregate	44,952	9,259	1,225,980	44,952	9,259	1,225,980
MD	ANATF_DC	wastewater-Industrial	INSIG		Aggregate	70	27	7,450	70	27	7,450
<b>MD</b>	<b>ANATF_DC</b>	<b>SubTotal</b>				<b>45,022</b>	<b>9,287</b>	<b>1,233,431</b>	<b>45,022</b>	<b>9,287</b>	<b>1,233,431</b>
MD	ANATF_MD	Stormwater-MS4	--		Aggregate	477,039	50,741	8,041,101	293,593	45,744	72,392,800
MD	ANATF_MD	wastewater-Federal	SIG	MD0020842	USDA EAST-SIDE WWTP	1,934	145	14,502	1,939	148	218,885
MD	ANATF_MD	wastewater-Industrial	INSIG		Aggregate	1,506	15	23,351	1,508	15	348,405
MD	ANATF_MD	wastewater-Municipal	INSIG		Aggregate	2,079	326	6,310	2,085	333	95,237
<b>MD</b>	<b>ANATF_MD</b>	<b>SubTotal</b>				<b>482,557</b>	<b>51,226</b>	<b>8,085,263</b>	<b>299,124</b>	<b>46,241</b>	<b>73,055,327</b>
MD	BACOH	Stormwater-MS4	--		Aggregate	164,276	26,644	5,123,077	134,744	25,269	6,984,287
MD	BACOH	wastewater-Industrial	INSIG		Aggregate	1,287	331	8,556	1,062	317	12,774
MD	BACOH	wastewater-Municipal	SIG	MD0021555	BACK RIVER WWTP	1,896,263	94,813	14,221,974	1,896,263	94,813	14,221,974
<b>MD</b>	<b>BACOH</b>	<b>SubTotal</b>				<b>2,061,826</b>	<b>121,788</b>	<b>19,353,607</b>	<b>2,032,069</b>	<b>120,400</b>	<b>21,219,036</b>
MD	BIGMH	Agriculture-CAFO	--		Aggregate	731	66	0	731	66	0
MD	BIGMH	Stormwater-MS4	--		Aggregate	376	69	18,311	376	69	18,311
MD	BIGMH	wastewater-Municipal	INSIG		Aggregate	1,859	310	3,098	1,859	310	3,098
<b>MD</b>	<b>BIGMH</b>	<b>SubTotal</b>				<b>2,966</b>	<b>444</b>	<b>21,409</b>	<b>2,966</b>	<b>444</b>	<b>21,409</b>
MD	BOHOH	Stormwater-MS4	--		Aggregate	2,818	464	84,571	2,818	464	84,571
MD	BOHOH	wastewater-Industrial	INSIG		Aggregate	4	0	55	4	0	55
MD	BOHOH	wastewater-Municipal	INSIG		Aggregate	4,897	968	7,985	4,897	968	7,985
<b>MD</b>	<b>BOHOH</b>	<b>SubTotal</b>				<b>7,719</b>	<b>1,432</b>	<b>92,611</b>	<b>7,719</b>	<b>1,432</b>	<b>92,611</b>
MD	BSHOH	Stormwater-MS4	--		Aggregate	236,934	18,180	12,317,075	193,811	16,468	14,399,748
MD	BSHOH	wastewater-Federal	SIG	MD0021229	U.S. ARMY ABERDEEN PROVING GROUND- EDGEWOOD AREA	14,540	1,091	109,051	14,540	1,091	109,051
MD	BSHOH	wastewater-Industrial	INSIG		Aggregate	3,697	1,301	12,677	3,035	1,101	13,635
MD	BSHOH	wastewater-Municipal	SIG	MD0056545	SOD RUN WWTP	165,550	12,416	1,241,628	165,550	12,416	1,241,628
<b>MD</b>	<b>BSHOH</b>	<b>SubTotal</b>				<b>420,721</b>	<b>32,988</b>	<b>13,680,431</b>	<b>376,936</b>	<b>31,076</b>	<b>15,764,062</b>
MD	C&DOH_DE	Stormwater-MS4	--		Aggregate	1	0	30	1	0	30
<b>MD</b>	<b>C&amp;DOH_DE</b>	<b>SubTotal</b>				<b>1</b>	<b>0</b>	<b>30</b>	<b>1</b>	<b>0</b>	<b>30</b>
MD	C&DOH_MD	Stormwater-MS4	--		Aggregate	3,045	452	114,146	3,045	452	114,146
MD	C&DOH_MD	wastewater-Municipal	INSIG		Aggregate	6,016	1,692	19,121	6,016	1,692	19,121
<b>MD</b>	<b>C&amp;DOH_MD</b>	<b>SubTotal</b>				<b>9,062</b>	<b>2,144</b>	<b>133,267</b>	<b>9,062</b>	<b>2,144</b>	<b>133,267</b>

Appendix B1 - Point Source Interim Target Loads for Maryland's Phase I Plan

STATE	Chesapeake Bay Segment	Sourcename	Type	NPDES	Facility	EOS TN 2017 (lbs/yr)	EOS TP 2017 (lbs/yr)	EOS TSS 2017 (lbs/yr)	DEL TN 2017 (lbs/yr)	DEL TP 2017 (lbs/yr)	DEL TSS 2017 (lbs/yr)
MD	CB1TF	Agriculture-CAFO	--		Aggregate	729	13	300	436	5	132
MD	CB1TF	Stormwater-MS4	--		Aggregate	170,035	12,817	6,699,836	158,227	12,130	6,464,722
MD	CB1TF	wastewater-Industrial	INSIG		Aggregate	16,649	334	45,698	16,647	333	45,666
MD	CB1TF	wastewater-Municipal	INSIG		Aggregate	50,173	5,628	68,646	39,138	4,800	71,602
MD	CB1TF	wastewater-Municipal	SIG	MD0020613	PERRYVILLE WWTP	12,646	948	94,846	12,646	948	94,846
MD	CB1TF	wastewater-Municipal	SIG	MD0021237	ABERDEEN PROVING GROUND	9,777	733	73,327	9,777	733	73,327
MD	CB1TF	wastewater-Municipal	SIG	MD0021563	ABERDEEN ADVANCED WWTP	23,640	1,773	177,302	23,640	1,773	177,302
MD	CB1TF	wastewater-Municipal	SIG	MD0021750	HAVRE DE GRACE WWTP	17,942	1,346	134,562	17,942	1,346	134,562
<b>MD</b>	<b>CB1TF</b>	<b>SubTotal</b>				<b>301,591</b>	<b>23,592</b>	<b>7,294,516</b>	<b>278,453</b>	<b>22,070</b>	<b>7,062,159</b>
MD	CB2OH	Agriculture-CAFO	--		Aggregate	344	28	905	344	28	905
MD	CB2OH	Stormwater-MS4	--		Aggregate	21,731	3,227	544,023	21,731	3,227	544,023
MD	CB2OH	wastewater-Industrial	INSIG		Aggregate	2	0	36	2	0	36
MD	CB2OH	wastewater-Industrial	SIG	MD-HARTM	Hart Miller Dredged Material C F	126,270	202	465,971	126,270	202	465,971
MD	CB2OH	wastewater-Municipal	INSIG		Aggregate	6,062	784	14,157	6,062	784	14,157
<b>MD</b>	<b>CB2OH</b>	<b>SubTotal</b>				<b>154,409</b>	<b>4,241</b>	<b>1,025,093</b>	<b>154,409</b>	<b>4,241</b>	<b>1,025,093</b>
MD	CB3MH	Agriculture-CAFO	--		Aggregate	127	11	195	127	11	195
MD	CB3MH	Stormwater-MS4	--		Aggregate	2,606	472	158,308	2,606	472	158,308
MD	CB3MH	wastewater-Industrial	INSIG		Aggregate	1,678	599	5,633	1,678	599	5,633
MD	CB3MH	wastewater-Municipal	SIG	MD0021644	BROADNECK WATER RECLAMATION FACILITY	62,391	4,679	467,934	62,391	4,679	467,934
MD	CB3MH	wastewater-Municipal	SIG	MD0023485	KENT ISLAND WWTP	27,758	2,082	208,185	27,758	2,082	208,185
<b>MD</b>	<b>CB3MH</b>	<b>SubTotal</b>				<b>94,561</b>	<b>7,843</b>	<b>840,256</b>	<b>94,561</b>	<b>7,843</b>	<b>840,256</b>
MD	CB4MH	Agriculture-CAFO	--		Aggregate	79	7	0	79	7	0
MD	CB4MH	Stormwater-MS4	--		Aggregate	23,721	3,520	690,973	23,721	3,520	690,973
MD	CB4MH	wastewater-Industrial	INSIG		Aggregate	1,303	463	4,446	1,303	463	4,446
MD	CB4MH	wastewater-Municipal	INSIG		Aggregate	4,128	1,688	9,687	4,128	1,688	9,687
MD	CB4MH	wastewater-Municipal	SIG	MD0020281	CHESAPEAKE BEACH WWTP	16,762	1,257	125,712	16,762	1,257	125,712
MD	CB4MH	wastewater-Municipal	SIG	MD0024350	BROADWATER WATER RECLAMATION FACILITY	14,036	1,053	105,271	14,036	1,053	105,271
<b>MD</b>	<b>CB4MH</b>	<b>SubTotal</b>				<b>60,029</b>	<b>7,988</b>	<b>936,089</b>	<b>60,029</b>	<b>7,988</b>	<b>936,089</b>
MD	CB5MH_MD	Agriculture-CAFO	--		Aggregate	4	0	0	4	0	0
MD	CB5MH_MD	Stormwater-MS4	--		Aggregate	1,553	324	80,576	1,553	324	80,576
MD	CB5MH_MD	wastewater-Municipal	SIG	MD0021679	MARLAY-TAYLOR WWTP	55,647	4,174	417,351	55,647	4,174	417,351
<b>MD</b>	<b>CB5MH_MD</b>	<b>SubTotal</b>				<b>57,204</b>	<b>4,498</b>	<b>497,928</b>	<b>57,204</b>	<b>4,498</b>	<b>497,928</b>



Appendix B1 - Point Source Interim Target Loads for Maryland's Phase I Plan

STATE	Chesapeake Bay Segment	Sourcename	Type	NPDES	Facility	EOS TN 2017 (lbs/yr)	EOS TP 2017 (lbs/yr)	EOS TSS 2017 (lbs/yr)	DEL TN 2017 (lbs/yr)	DEL TP 2017 (lbs/yr)	DEL TSS 2017 (lbs/yr)
MD	CHOMH1	Agriculture-CAFO	--		Aggregate	406	36	0	406	36	0
MD	CHOMH1	Stormwater-MS4	--		Aggregate	2,412	550	258,460	2,412	550	258,460
MD	CHOMH1	wastewater-Industrial	INSIG		Aggregate	10	1	70	10	1	70
MD	CHOMH1	wastewater-Municipal	INSIG		Aggregate	1,500	211	11,625	1,500	211	11,625
<b>MD</b>	<b>CHOMH1</b>	<b>SubTotal</b>				<b>4,328</b>	<b>798</b>	<b>270,154</b>	<b>4,328</b>	<b>798</b>	<b>270,154</b>
MD	CHOMH2	Agriculture-CAFO	--		Aggregate	676	61	0	676	61	0
MD	CHOMH2	Stormwater-MS4	--		Aggregate	2,183	766	169,528	2,183	766	169,528
MD	CHOMH2	wastewater-Industrial	INSIG		Aggregate	312	111	1,059	312	111	1,059
MD	CHOMH2	wastewater-Municipal	INSIG		Aggregate	8,909	324	30,234	8,909	324	30,234
MD	CHOMH2	wastewater-Municipal	SIG	MD0021636	CAMBRIDGE WWTP	39,067	2,930	293,001	39,067	2,930	293,001
<b>MD</b>	<b>CHOMH2</b>	<b>SubTotal</b>				<b>51,147</b>	<b>4,192</b>	<b>493,823</b>	<b>51,147</b>	<b>4,192</b>	<b>493,823</b>
MD	CHOOH	Agriculture-CAFO	--		Aggregate	2,268	202	118	2,268	202	118
MD	CHOOH	Stormwater-MS4	--		Aggregate	1,565	611	131,497	1,565	611	131,497
MD	CHOOH	wastewater-Municipal	INSIG		Aggregate	3,098	298	7,492	3,098	298	7,492
MD	CHOOH	wastewater-Municipal	SIG	MD0020273	EASTON UTILITIES WWTF	30,983	2,324	232,370	30,983	2,324	232,370
<b>MD</b>	<b>CHOOH</b>	<b>SubTotal</b>				<b>37,914</b>	<b>3,434</b>	<b>371,477</b>	<b>37,914</b>	<b>3,434</b>	<b>371,477</b>
MD	CHOTF	Agriculture-CAFO	--		Aggregate	8,617	768	560	7,561	714	678
MD	CHOTF	Stormwater-MS4	--		Aggregate	5,298	2,252	680,127	4,524	2,040	925,880
MD	CHOTF	wastewater-Industrial	INSIG		Aggregate	2,757	984	9,244	2,756	984	9,258
MD	CHOTF	wastewater-Industrial	SIG	MD0067857	ALLEN FAMILY FOODS	4,500	370	62,091	4,500	370	62,091
MD	CHOTF	wastewater-Municipal	INSIG		Aggregate	18,425	2,652	41,823	13,999	2,290	56,454
MD	CHOTF	wastewater-Municipal	SIG	MD0020494	DENTON WWTP	7,070	530	53,028	7,070	530	53,028
<b>MD</b>	<b>CHOTF</b>	<b>SubTotal</b>				<b>46,667</b>	<b>7,556</b>	<b>846,875</b>	<b>40,411</b>	<b>6,928</b>	<b>1,107,389</b>
MD	CHSMH	Agriculture-CAFO	--		Aggregate	1,674	149	943	1,674	149	943
MD	CHSMH	Stormwater-MS4	--		Aggregate	1,741	537	230,742	1,741	537	230,742
MD	CHSMH	wastewater-Industrial	INSIG		Aggregate	154	1	74	154	1	74
MD	CHSMH	wastewater-Municipal	INSIG		Aggregate	15,828	1,665	36,508	15,828	1,665	36,508
MD	CHSMH	wastewater-Municipal	SIG	MD0020010	CHESTERTOWN WWTP	9,223	692	69,171	9,223	692	69,171
MD	CHSMH	wastewater-Municipal	SIG	MD0020834	CENTREVILLE WATER TREATMENT	1,796	220	13,466	1,796	220	13,466
<b>MD</b>	<b>CHSMH</b>	<b>SubTotal</b>				<b>30,416</b>	<b>3,264</b>	<b>350,905</b>	<b>30,416</b>	<b>3,264</b>	<b>350,905</b>

Appendix B1 - Point Source Interim Target Loads for Maryland's Phase I Plan

STATE	Chesapeake Bay Segment	Sourcename	Type	NPDES	Facility	EOS TN 2017 (lbs/yr)	EOS TP 2017 (lbs/yr)	EOS TSS 2017 (lbs/yr)	DEL TN 2017 (lbs/yr)	DEL TP 2017 (lbs/yr)	DEL TSS 2017 (lbs/yr)
MD	CHSOH	Agriculture-CAFO	--		Aggregate	2,235	199	645	2,235	199	645
MD	CHSOH	Stormwater-MS4	--		Aggregate	1,272	425	159,751	1,272	425	159,751
MD	CHSOH	wastewater-Industrial	INSIG		Aggregate	10,158	2,313	27,510	10,158	2,313	27,510
MD	CHSOH	wastewater-Municipal	INSIG		Aggregate	9,509	2,079	22,148	9,509	2,079	22,148
<b>MD</b>	<b>CHSOH</b>	<b>SubTotal</b>				<b>23,175</b>	<b>5,017</b>	<b>210,054</b>	<b>23,175</b>	<b>5,017</b>	<b>210,054</b>
MD	CHSTF	Agriculture-CAFO	--		Aggregate	1,930	172	629	1,695	160	778
MD	CHSTF	Stormwater-MS4	--		Aggregate	861	286	70,673	739	259	91,680
MD	CHSTF	wastewater-Municipal	INSIG		Aggregate	9,562	1,419	15,032	8,564	1,347	18,001
<b>MD</b>	<b>CHSTF</b>	<b>SubTotal</b>				<b>12,353</b>	<b>1,876</b>	<b>86,334</b>	<b>10,998</b>	<b>1,766</b>	<b>110,459</b>
MD	EASMH	Agriculture-CAFO	--		Aggregate	1,943	176	0	1,943	176	0
MD	EASMH	Stormwater-MS4	--		Aggregate	3,736	1,051	359,560	3,736	1,051	359,560
MD	EASMH	wastewater-Industrial	INSIG		Aggregate	19,391	652	59,006	19,391	652	59,006
MD	EASMH	wastewater-Municipal	INSIG		Aggregate	625	104	1,042	625	104	1,042
MD	EASMH	wastewater-Municipal	SIG	MD0023604	TALBOT COUNTY REGION II WWTP	4,808	361	36,057	4,808	361	36,057
<b>MD</b>	<b>EASMH</b>	<b>SubTotal</b>				<b>30,503</b>	<b>2,344</b>	<b>455,666</b>	<b>30,503</b>	<b>2,344</b>	<b>455,666</b>
MD	ELKOH	Stormwater-MS4	--		Aggregate	52,371	5,983	1,711,515	51,553	5,946	1,753,690
MD	ELKOH	wastewater-Industrial	INSIG		Aggregate	4	0	5,533	4	0	5,533
MD	ELKOH	wastewater-Municipal	INSIG		Aggregate	28,915	3,042	35,853	28,915	3,042	35,853
MD	ELKOH	wastewater-Municipal	SIG	MD0020681	ELKTON WWTP	29,972	2,248	224,791	29,972	2,248	224,791
<b>MD</b>	<b>ELKOH</b>	<b>SubTotal</b>				<b>111,262</b>	<b>11,274</b>	<b>1,977,691</b>	<b>110,444</b>	<b>11,237</b>	<b>2,019,867</b>
MD	FSBMH	Agriculture-CAFO	--		Aggregate	1,653	149	0	1,601	147	0
MD	FSBMH	Stormwater-MS4	--		Aggregate	1,270	271	38,887	1,255	268	44,833
MD	FSBMH	wastewater-Industrial	INSIG		Aggregate	9,643	1,082	23,372	9,643	1,082	23,372
<b>MD</b>	<b>FSBMH</b>	<b>SubTotal</b>				<b>12,566</b>	<b>1,502</b>	<b>62,259</b>	<b>12,498</b>	<b>1,497</b>	<b>68,205</b>
MD	GUNOH	Agriculture-CAFO	--		Aggregate	2,766	92	6,615	518	35	498
MD	GUNOH	Stormwater-MS4	--		Aggregate	393,398	28,888	20,870,055	277,428	21,848	13,191,768
MD	GUNOH	wastewater-Industrial	INSIG		Aggregate	2,086	158	101,554	1,027	122	25,891
MD	GUNOH	wastewater-Municipal	INSIG		Aggregate	30,062	1,204	35,900	6,702	773	7,730
MD	GUNOH	wastewater-Municipal	SIG	MD0022446	HAMPSTEAD WWTP	7,677	576	57,578	3,095	298	14,156
MD	GUNOH	wastewater-Municipal	SIG	MD0022535	JOPPATOWNE WWTP	10,539	790	79,044	7,945	656	89,391
<b>MD</b>	<b>GUNOH</b>	<b>SubTotal</b>				<b>446,529</b>	<b>31,709</b>	<b>21,150,745</b>	<b>296,716</b>	<b>23,733</b>	<b>13,329,433</b>

Appendix B1 - Point Source Interim Target Loads for Maryland's Phase I Plan

STATE	Chesapeake Bay Segment	Sourcename	Type	NPDES	Facility	EOS TN 2017 (lbs/vr)	EOS TP 2017 (lbs/vr)	EOS TSS 2017 (lbs/vr)	DEL TN 2017 (lbs/vr)	DEL TP 2017 (lbs/vr)	DEL TSS 2017 (lbs/vr)
MD	HNGMH	Agriculture-CAFO	--		Aggregate	43	4	0	43	4	0
MD	HNGMH	Stormwater-MS4	--		Aggregate	563	107	18,040	563	107	18,040
MD	HNGMH	wastewater-Industrial	INSIG		Aggregate	60	7	397	60	7	397
<b>MD</b>	<b>HNGMH</b>	<b>SubTotal</b>				<b>666</b>	<b>117</b>	<b>18,438</b>	<b>666</b>	<b>117</b>	<b>18,438</b>
MD	LCHMH	Agriculture-CAFO	--		Aggregate	502	45	0	502	45	0
MD	LCHMH	Stormwater-MS4	--		Aggregate	1,013	201	78,105	1,013	201	78,105
MD	LCHMH	wastewater-Industrial	INSIG		Aggregate	15	2	110	15	2	110
<b>MD</b>	<b>LCHMH</b>	<b>SubTotal</b>				<b>1,530</b>	<b>248</b>	<b>78,215</b>	<b>1,530</b>	<b>248</b>	<b>78,215</b>
MD	MAGMH	Stormwater-MS4	--		Aggregate	56,110	7,885	1,127,811	56,110	7,885	1,127,811
MD	MAGMH	wastewater-Industrial	INSIG		Aggregate	58	3	397	58	3	397
<b>MD</b>	<b>MAGMH</b>	<b>SubTotal</b>				<b>56,169</b>	<b>7,888</b>	<b>1,128,208</b>	<b>56,169</b>	<b>7,888</b>	<b>1,128,208</b>
MD	MANMH	Agriculture-CAFO	--		Aggregate	2,259	203	0	2,259	203	0
MD	MANMH	Stormwater-MS4	--		Aggregate	2,023	614	116,243	2,023	614	116,243
MD	MANMH	wastewater-Industrial	INSIG		Aggregate	3,522	341	18,648	3,522	341	18,648
MD	MANMH	wastewater-Municipal	INSIG		Aggregate	3,553	207	52,687	3,553	207	52,687
MD	MANMH	wastewater-Municipal	SIG	MD0020656	PRINCESS ANNE WWTP	5,219	522	52,191	5,219	522	52,191
<b>MD</b>	<b>MANMH</b>	<b>SubTotal</b>				<b>16,575</b>	<b>1,887</b>	<b>239,769</b>	<b>16,575</b>	<b>1,887</b>	<b>239,769</b>
MD	MATTF	Stormwater-MS4	--		Aggregate	58,479	11,400	2,245,168	37,665	8,775	2,114,032
MD	MATTF	wastewater-Federal	SIG	MD0003158	NAVAL SUPPORT FACILITY INDIAN HEAD INDUST	1,777	741	41,937	1,777	741	41,937
MD	MATTF	wastewater-Industrial	INSIG		Aggregate	2	0	36	1	0	34
MD	MATTF	wastewater-Municipal	SIG	MD0020052	INDIAN HEAD WWTP	5,540	415	41,547	5,540	415	41,547
<b>MD</b>	<b>MATTF</b>	<b>SubTotal</b>				<b>65,798</b>	<b>12,556</b>	<b>2,328,689</b>	<b>44,982</b>	<b>9,931</b>	<b>2,197,550</b>
MD	MIDOH	Stormwater-MS4	--		Aggregate	23,803	3,876	941,506	23,803	3,876	941,506
MD	MIDOH	wastewater-Industrial	INSIG		Aggregate	13,663	1,056	49,162	13,663	1,056	49,162
<b>MD</b>	<b>MIDOH</b>	<b>SubTotal</b>				<b>37,466</b>	<b>4,932</b>	<b>990,669</b>	<b>37,466</b>	<b>4,932</b>	<b>990,669</b>
MD	NANMH	Agriculture-CAFO	--		Aggregate	865	75	0	865	75	0
MD	NANMH	Stormwater-MS4	--		Aggregate	617	144	27,802	617	144	27,802
MD	NANMH	wastewater-Industrial	INSIG		Aggregate	800	4	1,936	800	4	1,936
<b>MD</b>	<b>NANMH</b>	<b>SubTotal</b>				<b>2,282</b>	<b>223</b>	<b>29,738</b>	<b>2,282</b>	<b>223</b>	<b>29,738</b>
MD	NANOH	Agriculture-CAFO	--		Aggregate	4,636	409	138	4,430	394	181
MD	NANOH	Stormwater-MS4	--		Aggregate	3,264	1,204	291,899	3,239	1,197	298,761
MD	NANOH	Wastewater-CSO	--		Aggregate	8,874	1,109	144,202	8,874	1,109	144,202
MD	NANOH	wastewater-Industrial	INSIG		Aggregate	4,972	1,349	27,306	4,972	1,349	27,306
MD	NANOH	wastewater-Municipal	INSIG		Aggregate	9,179	2,185	22,295	9,179	2,185	22,295
MD	NANOH	wastewater-Municipal	SIG	MD0020249	FEDERALSBURG WWTP	5,170	388	38,773	5,170	388	38,773
MD	NANOH	wastewater-Municipal	SIG	MD0022730	HURLOCK WWTP	13,493	1,012	101,195	13,493	1,012	101,195
<b>MD</b>	<b>NANOH</b>	<b>SubTotal</b>				<b>49,587</b>	<b>7,655</b>	<b>625,808</b>	<b>49,356</b>	<b>7,634</b>	<b>632,713</b>

Appendix B1 - Point Source Interim Target Loads for Maryland's Phase I Plan

STATE	Chesapeake Bay Segment	Sourcename	Type	NPDES	Facility	EOS TN 2017 (lbs/yr)	EOS TP 2017 (lbs/yr)	EOS TSS 2017 (lbs/yr)	DEL TN 2017 (lbs/yr)	DEL TP 2017 (lbs/yr)	DEL TSS 2017 (lbs/yr)
MD	NANTF_DE	Agriculture-CAFO	--		Aggregate	131	12	1	131	12	1
MD	NANTF_DE	Stormwater-MS4	--		Aggregate	91	28	3,922	91	28	3,922
<b>MD</b>	<b>NANTF_DE</b>	<b>SubTotal</b>				<b>223</b>	<b>39</b>	<b>3,923</b>	<b>223</b>	<b>39</b>	<b>3,923</b>
MD	NANTF_MD	Agriculture-CAFO	--		Aggregate	284	25	0	284	25	0
MD	NANTF_MD	Stormwater-MS4	--		Aggregate	169	41	10,826	169	41	10,826
MD	NANTF_MD	wastewater-Municipal	INSIG		Aggregate	7,237	1,382	12,768	7,237	1,382	12,768
<b>MD</b>	<b>NANTF_MD</b>	<b>SubTotal</b>				<b>7,690</b>	<b>1,448</b>	<b>23,594</b>	<b>7,690</b>	<b>1,448</b>	<b>23,594</b>
MD	NORTF	Stormwater-MS4	--		Aggregate	40,815	4,301	3,930,610	34,289	4,020	4,304,373
MD	NORTF	wastewater-Municipal	INSIG		Aggregate	1,822	304	3,037	1,822	304	3,037
MD	NORTF	wastewater-Municipal	SIG	MD0052027	NORTHEAST RIVER ADVANCED WWTP	17,798	1,335	133,482	17,798	1,335	133,482
<b>MD</b>	<b>NORTF</b>	<b>SubTotal</b>				<b>60,434</b>	<b>5,939</b>	<b>4,067,129</b>	<b>53,909</b>	<b>5,658</b>	<b>4,440,892</b>
MD	PATMH	Agriculture-CAFO	--		Aggregate	13,213	438	25,882	2,811	100	8,080
MD	PATMH	Stormwater-MS4	--		Aggregate	1,138,352	106,983	70,112,013	820,690	89,319	59,033,953
MD	PATMH	wastewater-Industrial	INSIG		Aggregate	146,643	7,163	533,938	124,157	4,647	462,280
MD	PATMH	wastewater-Industrial	SIG	MD-COXRK	COX CREEK DREDGED MATERIAL CONTAINMENT FACILITY	168,060	2,633	193,606	168,060	2,633	193,606
MD	PATMH	wastewater-Industrial	SIG	MD-MASNV	Masonville Dredging Facility <sup>1</sup>	168,060	2,633	193,606	168,060	2,633	193,606
MD	PATMH	wastewater-Industrial	SIG	MD0000311	W R GRACE	310,721	1,804	334,037	310,721	1,804	334,037
MD	PATMH	wastewater-Industrial	SIG	MD0001201	SEVERSTAL SPARROWS POINT <sup>2</sup>	131,420	25,400	85,863	131,420	25,400	85,863
MD	PATMH	wastewater-Industrial	SIG	MD0001384	CONGOLEUM	4,005	160	19,324	0	0	0
MD	PATMH	wastewater-Industrial	SIG	MD0001775	ERACHEM <sup>3</sup>	13,809	58	8,352	13,809	58	8,352
MD	PATMH	wastewater-Industrial	SIG	MD_COXRK	COX CREEK DREDGED MATERIAL CONTAINMENT FACILITY						
MD	PATMH	wastewater-Municipal	INSIG		Aggregate	6,881	1,247	16,227	5,191	846	12,201
MD	PATMH	wastewater-Municipal	SIG	MD0021512	FREEDOM DISTRICT WWTP	30,505	2,288	228,786	19,165	1,552	169,207
MD	PATMH	wastewater-Municipal	SIG	MD0021601	PATAPSCO WWTP	833,394	62,505	6,250,456	833,394	62,505	6,250,456
MD	PATMH	wastewater-Municipal	SIG	MD0021661	COX CREEK WATER RECLAMATION FACILITY	148,689	11,152	1,115,170	148,689	11,152	1,115,170
MD	PATMH	wastewater-Municipal	SIG	MD0022527	MOUNT AIRY WWTP	10,010	751	75,073	6,289	509	55,523
<b>MD</b>	<b>PATMH</b>	<b>SubTotal</b>				<b>3,123,762</b>	<b>225,215</b>	<b>79,192,335</b>	<b>2,752,457</b>	<b>203,157</b>	<b>67,922,336</b>
MD	PAXMH	Stormwater-MS4	--		Aggregate	12,577	2,734	560,653	12,577	2,734	560,653
MD	PAXMH	wastewater-Industrial	INSIG		Aggregate	15,509	13,821	138,152	15,509	13,821	138,152
<b>MD</b>	<b>PAXMH</b>	<b>SubTotal</b>				<b>28,086</b>	<b>16,555</b>	<b>698,805</b>	<b>28,086</b>	<b>16,555</b>	<b>698,805</b>

Appendix B1 - Point Source Interim Target Loads for Maryland's Phase I Plan

STATE	Chesapeake Bay Segment	Sourcename	Type	NPDES	Facility	EOS TN 2017 (lbs/yr)	EOS TP 2017 (lbs/yr)	EOS TSS 2017 (lbs/yr)	DEL TN 2017 (lbs/yr)	DEL TP 2017 (lbs/yr)	DEL TSS 2017 (lbs/yr)
MD	PAXOH	Stormwater-MS4	--		Aggregate	11,048	2,982	437,404	10,973	2,973	435,535
MD	PAXOH	wastewater-Industrial	INSIG		Aggregate	2	0	36	2	0	36
MD	PAXOH	wastewater-Municipal	INSIG		Aggregate	1,853	302	3,016	1,853	302	3,016
<b>MD</b>	<b>PAXOH</b>	<b>SubTotal</b>				<b>12,903</b>	<b>3,284</b>	<b>440,456</b>	<b>12,829</b>	<b>3,275</b>	<b>438,586</b>
MD	PAXTF	Stormwater-MS4	--		Aggregate	564,743	60,130	18,781,673	322,649	40,235	17,790,437
MD	PAXTF	wastewater-Federal	SIG	MD0021717	U.S. ARMY - FORT GEORGE G. MEADE	21,979	1,648	164,842	14,790	1,065	179,376
MD	PAXTF	wastewater-Industrial	INSIG		Aggregate	10,883	1,895	48,945	6,951	854	44,804
MD	PAXTF	wastewater-Industrial	SIG	MD0000469	MD & VA MILK PRODUCERS	5,431	543	42,150	3,655	351	45,867
MD	PAXTF	wastewater-Municipal	INSIG		Aggregate	15,818	1,930	31,385	15,661	1,924	31,241
MD	PAXTF	wastewater-Municipal	SIG	MD0021628	BOWIE WWTP	26,659	1,999	199,944	8,299	1,291	217,573
MD	PAXTF	wastewater-Municipal	SIG	MD0021652	PATUXENT WATER RECLAMATION FACILITY	69,532	5,215	521,491	46,790	3,368	567,472
MD	PAXTF	wastewater-Municipal	SIG	MD0021725	PARKWAY WWTP	78,802	5,910	591,018	24,532	3,818	643,129
MD	PAXTF	wastewater-Municipal	SIG	MD0021741	WESTERN BRANCH WWTP	288,987	21,674	2,167,403	288,987	21,674	2,167,403
MD	PAXTF	wastewater-Municipal	SIG	MD0055174	LITTLE PATUXENT	263,593	19,769	1,976,948	177,378	12,770	2,151,258
MD	PAXTF	wastewater-Municipal	SIG	MD0059145	PINEY ORCHARD WWTP	5,776	433	43,320	3,887	280	47,139
MD	PAXTF	wastewater-Municipal	SIG	MD0062596	MARYLAND CITY	12,935	970	97,012	4,027	627	105,565
MD	PAXTF	wastewater-Municipal	SIG	MD0063207	DORSEY RUN ADVANCED WWTP	17,714	1,329	132,854	11,920	858	144,568
<b>MD</b>	<b>PAXTF</b>	<b>SubTotal</b>				<b>1,382,853</b>	<b>123,447</b>	<b>24,798,984</b>	<b>929,526</b>	<b>89,114</b>	<b>24,135,832</b>
MD	PISTF	Stormwater-MS4	--		Aggregate	73,615	13,452	2,126,276	64,596	12,799	2,024,489
MD	PISTF	wastewater-Municipal	INSIG		Aggregate	1,000	94	2,759	765	85	2,543
MD	PISTF	wastewater-Municipal	SIG	MD0021539	PISCATAWAY WWTP	273,588	12,311	2,051,912	273,588	12,311	2,051,912
<b>MD</b>	<b>PISTF</b>	<b>SubTotal</b>				<b>348,202</b>	<b>25,857</b>	<b>4,180,947</b>	<b>338,950</b>	<b>25,195</b>	<b>4,078,945</b>
MD	POCMH_MD	Agriculture-CAFO	--		Aggregate	1,069	96	0	886	90	0
MD	POCMH_MD	Stormwater-MS4	--		Aggregate	475	126	35,845	418	117	46,584
<b>MD</b>	<b>POCMH_MD</b>	<b>SubTotal</b>				<b>1,544</b>	<b>222</b>	<b>35,845</b>	<b>1,304</b>	<b>207</b>	<b>46,584</b>
MD	POCOH_MD	Agriculture-CAFO	--		Aggregate	681	61	0	681	61	0
MD	POCOH_MD	Stormwater-MS4	--		Aggregate	1,746	927	190,395	1,746	927	190,395
<b>MD</b>	<b>POCOH_MD</b>	<b>SubTotal</b>				<b>2,426</b>	<b>989</b>	<b>190,395</b>	<b>2,426</b>	<b>989</b>	<b>190,395</b>
MD	POCOH_VA	Agriculture-CAFO	--		Aggregate	374	33	0	374	33	0
MD	POCOH_VA	Stormwater-MS4	--		Aggregate	447	201	42,300	447	201	42,300
<b>MD</b>	<b>POCOH_VA</b>	<b>SubTotal</b>				<b>821</b>	<b>234</b>	<b>42,300</b>	<b>821</b>	<b>234</b>	<b>42,300</b>

Appendix B1 - Point Source Interim Target Loads for Maryland's Phase I Plan

STATE	Chesapeake Bay Segment	Sourcename	Type	NPDES	Facility	EOS TN 2017 (lbs/yr)	EOS TP 2017 (lbs/yr)	EOS TSS 2017 (lbs/yr)	DEL TN 2017 (lbs/yr)	DEL TP 2017 (lbs/yr)	DEL TSS 2017 (lbs/yr)
MD	POCTF	Agriculture-CAFO	--		Aggregate	6,585	581	0	5,089	498	0
MD	POCTF	Stormwater-MS4	--		Aggregate	3,743	1,116	237,262	3,039	979	240,026
MD	POCTF	wastewater-Industrial	INSIG		Aggregate	128	28	2,266	112	28	2,086
MD	POCTF	wastewater-Municipal	INSIG		Aggregate	15,784	2,391	19,548	10,546	1,827	17,772
MD	POCTF	wastewater-Municipal	SIG	MD0022551	POCOMOKE CITY WWTP	8,290	622	62,174	8,290	622	62,174
MD	POCTF	wastewater-Municipal	SIG	MD0022764	SNOW HILL WWTP	3,872	290	29,037	3,872	290	29,037
<b>MD</b>	<b>POCTF</b>	<b>SubTotal</b>				<b>38,401</b>	<b>5,028</b>	<b>350,287</b>	<b>30,947</b>	<b>4,244</b>	<b>351,095</b>
MD	POTMH_MD	Stormwater-MS4	--		Aggregate	74,389	16,329	3,178,505	58,241	14,699	6,745,446
MD	POTMH_MD	wastewater-Industrial	INSIG		Aggregate	122,040	6,922	514,716	120,780	6,827	561,827
MD	POTMH_MD	wastewater-Municipal	INSIG		Aggregate	8,441	1,469	13,837	7,665	1,455	18,447
MD	POTMH_MD	wastewater-Municipal	SIG	MD0024767	LEONARDTOWN WWTP	6,446	483	48,344	6,446	483	48,344
MD	POTMH_MD	wastewater-Municipal	SIG	MD0057525	SWAN POINT WWTP	1,277	96	9,576	1,277	96	9,576
<b>MD</b>	<b>POTMH_MD</b>	<b>SubTotal</b>				<b>212,592</b>	<b>25,298</b>	<b>3,764,978</b>	<b>194,408</b>	<b>23,560</b>	<b>7,383,640</b>
MD	POTOH1_MD	Stormwater-MS4	--		Aggregate	2,364	640	147,280	2,364	640	147,280
MD	POTOH1_MD	wastewater-Industrial	INSIG		Aggregate	6	0	18	6	0	18
<b>MD</b>	<b>POTOH1_MD</b>	<b>SubTotal</b>				<b>2,369</b>	<b>640</b>	<b>147,298</b>	<b>2,369</b>	<b>640</b>	<b>147,298</b>
MD	POTOH2_MD	Stormwater-MS4	--		Aggregate	20,471	3,423	421,642	20,471	3,423	421,642
MD	POTOH2_MD	wastewater-Industrial	INSIG		Aggregate	4	1	27	4	1	27
MD	POTOH2_MD	wastewater-Municipal	INSIG		Aggregate	1,149	79	5,425	1,149	79	5,425
MD	POTOH2_MD	wastewater-Municipal	SIG	MD0020524	LA PLATA WWTP	19,265	1,445	144,485	19,265	1,445	144,485
<b>MD</b>	<b>POTOH2_MD</b>	<b>SubTotal</b>				<b>40,889</b>	<b>4,948</b>	<b>571,579</b>	<b>40,889</b>	<b>4,948</b>	<b>571,579</b>
MD	POTOH3_MD	Stormwater-MS4	--		Aggregate	7,128	1,349	199,765	6,509	1,321	199,453
<b>MD</b>	<b>POTOH3_MD</b>	<b>SubTotal</b>				<b>7,128</b>	<b>1,349</b>	<b>199,765</b>	<b>6,509</b>	<b>1,321</b>	<b>199,453</b>
MD	POTTF_DC	Stormwater-MS4	--		Aggregate	215,806	14,966	17,992,693	101,122	11,740	15,238,693
MD	POTTF_DC	wastewater-Industrial	INSIG		Aggregate	10,461	3,479	143,656	4,382	2,165	119,124
MD	POTTF_DC	wastewater-Municipal	SIG	DC0021199	BLUE PLAINS <sup>4</sup>	1,544,012	69,481	11,580,094	1,544,012	69,481	11,580,094
<b>MD</b>	<b>POTTF_DC</b>	<b>SubTotal</b>				<b>1,770,279</b>	<b>87,926</b>	<b>29,716,443</b>	<b>1,649,516</b>	<b>83,386</b>	<b>26,937,910</b>

Appendix B1 - Point Source Interim Target Loads for Maryland's Phase I Plan

STATE	Chesapeake Bay Segment	Sourcename	Type	NPDES	Facility	EOS TN 2017 (lbs/yr)	EOS TP 2017 (lbs/yr)	EOS TSS 2017 (lbs/yr)	DEL TN 2017 (lbs/yr)	DEL TP 2017 (lbs/yr)	DEL TSS 2017 (lbs/yr)
MD	POTTF_MD	Agriculture-CAFO	--		Aggregate	48,607	2,065	132,728	18,668	1,115	88,491
MD	POTTF_MD	Stormwater-MS4	--		Aggregate	2,345,640	186,780	92,782,807	1,558,963	106,853	62,404,147
MD	POTTF_MD	Wastewater-CSO	--		Aggregate	164,039	17,509	2,560,353	44,966	9,672	1,741,851
MD	POTTF_MD	wastewater-Federal	SIG	MD0020877	FORT DETRICK WWTP	9,995	750	74,959	7,249	414	50,996
MD	POTTF_MD	wastewater-Federal	SIG	MD0020885	NAVAL SUPPORT FACILITY INDIAN HEAD WWTP	7,169	538	53,767	7,169	538	53,767
MD	POTTF_MD	wastewater-Industrial	INSIG		Aggregate	184,330	22,441	783,921	90,404	9,232	489,880
MD	POTTF_MD	wastewater-Industrial	SIG	MD0001422	NEW PAGE CORPORATION - LUKE (Westvaco)	12,733	597	124,473	2,610	330	84,681
MD	POTTF_MD	wastewater-Industrial	SIG	MD0021687	UPPER POTOMAC RIVER COMMISSION	79,109	30,731	1,982,660	18,416	16,976	1,348,836
MD	POTTF_MD	wastewater-Municipal	INSIG		Aggregate	171,864	32,636	371,197	86,400	17,821	250,351
MD	POTTF_MD	wastewater-Municipal	SIG	MD0003221	WINEBRENNER WATER RECLAMATION FACILITY	2,194	165	16,455	1,405	91	11,194
MD	POTTF_MD	wastewater-Municipal	SIG	MD0020231	BOONSBORO WWTP	5,923	468	46,758	4,471	258	31,810
MD	POTTF_MD	wastewater-Municipal	SIG	MD0020257	EMMITSBURG WWTP	6,969	523	52,264	2,736	289	35,556
MD	POTTF_MD	wastewater-Municipal	SIG	MD0020672	TANEYTOWN WWTP	11,260	845	84,451	4,420	467	57,454
MD	POTTF_MD	wastewater-Municipal	SIG	MD0020958	BRUNSWICK WWTP	5,862	440	43,965	4,956	243	29,910
MD	POTTF_MD	wastewater-Municipal	SIG	MD0020982	DAMASCUS WWTP	10,378	778	77,837	4,964	430	52,954
MD	POTTF_MD	wastewater-Municipal	SIG	MD0021121	THURMONT WWTP	12,731	955	95,480	7,346	527	64,956
MD	POTTF_MD	wastewater-Municipal	SIG	MD0021491	SENECA WWTP <sup>5</sup>	197,050	13,301	1,477,879	94,251	7,348	1,005,425
MD	POTTF_MD	wastewater-Municipal	SIG	MD0021598	CUMBERLAND WWTP	155,170	11,638	1,163,773	55,178	6,429	791,734
MD	POTTF_MD	wastewater-Municipal	SIG	MD0021610	FREDERICK CITY WWTP	101,360	7,602	760,203	73,520	4,199	517,179
MD	POTTF_MD	wastewater-Municipal	SIG	MD0021776	HAGERSTOWN WWTP	93,406	7,005	700,546	70,508	3,870	476,593
MD	POTTF_MD	wastewater-Municipal	SIG	MD0021822	BALLENGER-MCKINNEY	81,251	6,094	609,383	64,227	3,366	414,573
MD	POTTF_MD	wastewater-Municipal	SIG	MD0021831	WESTMINSTER WWTP	67,635	5,073	507,263	22,400	2,802	345,100
MD	POTTF_MD	wastewater-Municipal	SIG	MD0021865	MATTAWOMAN WWTP	166,538	7,494	1,249,039	166,538	7,494	1,249,039
MD	POTTF_MD	wastewater-Municipal	SIG	MD0023001	POOLESVILLE WWTP	7,212	541	54,093	5,717	299	36,801
MD	POTTF_MD	wastewater-Municipal	SIG	MD0023957	MARYLAND CORRECTIONAL INST	15,784	1,184	118,382	11,915	654	80,537
MD	POTTF_MD	wastewater-Municipal	SIG	MD0060071	GEORGE'S CREEK WWTP	6,298	472	47,237	867	261	32,136
MD	POTTF_MD	wastewater-Municipal	SIG	MD0063509	CONOCOCHIEGUE WWTP <sup>5</sup>	35,492	2,662	266,193	23,042	1,470	181,095
MD	POTTF_MD	wastewater-Municipal	SIG	MD0063878	CELANESE WWTP	18,791	1,409	140,931	4,374	779	95,877
<b>MD</b>	<b>POTTF_MD</b>	<b>SubTotal</b>				<b>4,024,791</b>	<b>362,694</b>	<b>106,378,997</b>	<b>2,457,681</b>	<b>204,227</b>	<b>72,022,926</b>
MD	RHDMH	Stormwater-MS4	--		Aggregate	5,704	768	109,143	5,704	768	109,143
MD	RHDMH	wastewater-Industrial	INSIG		Aggregate	1	0	5	1	0	5
MD	RHDMH	wastewater-Municipal	SIG	MD0061794	MAYO LARGE COMUNAL	6,157	462	46,179	6,157	462	46,179
<b>MD</b>	<b>RHDMH</b>	<b>SubTotal</b>				<b>11,863</b>	<b>1,230</b>	<b>155,326</b>	<b>11,863</b>	<b>1,230</b>	<b>155,326</b>

Appendix B1 - Point Source Interim Target Loads for Maryland's Phase I Plan

STATE	Chesapeake Bay Segment	Sourcename	Type	NPDES	Facility	EOS TN 2017 (lbs\yr)	EOS TP 2017 (lbs\yr)	EOS TSS 2017 (lbs\yr)	DEL TN 2017 (lbs\yr)	DEL TP 2017 (lbs\yr)	DEL TSS 2017 (lbs\yr)
MD	SASOH	Agriculture-CAFO	--		Aggregate	311	25	739	311	25	739
MD	SASOH	Stormwater-MS4	--		Aggregate	2,093	710	218,874	2,093	710	218,874
MD	SASOH	wastewater-Industrial	INSIG		Aggregate	1,298	463	4,373	1,298	463	4,373
MD	SASOH	wastewater-Municipal	INSIG		Aggregate	10,036	1,418	7,369	10,036	1,418	7,369
<b>MD</b>	<b>SASOH</b>	<b>SubTotal</b>				<b>13,738</b>	<b>2,616</b>	<b>231,356</b>	<b>13,738</b>	<b>2,616</b>	<b>231,356</b>
MD	SEVMH	Stormwater-MS4	--		Aggregate	85,924	13,261	1,884,671	85,924	13,261	1,884,671
MD	SEVMH	wastewater-Federal	SIG	MD0023523	US NAVAL ACADEMY	2,028	152	15,211	2,028	152	15,211
MD	SEVMH	wastewater-Industrial	INSIG		Aggregate	95	8	917	95	8	917
MD	SEVMH	wastewater-Municipal	SIG	MD0021814	ANNAPOLIS WATER RECLAMATION FACILITY	104,089	7,807	780,668	104,089	7,807	780,668
<b>MD</b>	<b>SEVMH</b>	<b>SubTotal</b>				<b>192,136</b>	<b>21,228</b>	<b>2,681,466</b>	<b>192,136</b>	<b>21,228</b>	<b>2,681,466</b>
MD	SOUMH	Stormwater-MS4	--		Aggregate	56,083	8,347	1,263,162	56,083	8,347	1,263,162
MD	SOUMH	wastewater-Industrial	INSIG		Aggregate	295	4	1,172	295	4	1,172
MD	SOUMH	wastewater-Municipal	INSIG		Aggregate	918	27	1,204	918	27	1,204
<b>MD</b>	<b>SOUMH</b>	<b>SubTotal</b>				<b>57,296</b>	<b>8,379</b>	<b>1,265,539</b>	<b>57,296</b>	<b>8,379</b>	<b>1,265,539</b>
MD	TANMH_MD	Agriculture-CAFO	--		Aggregate	106	10	0	106	10	0
MD	TANMH_MD	Stormwater-MS4	--		Aggregate	1,045	200	71,891	1,045	200	71,891
MD	TANMH_MD	wastewater-Industrial	INSIG		Aggregate	14	2	91	14	2	91
MD	TANMH_MD	wastewater-Municipal	INSIG		Aggregate	2,439	407	4,066	2,439	407	4,066
MD	TANMH_MD	wastewater-Municipal	SIG	MD0020001	CRISFIELD WWTP	9,577	718	71,824	9,577	718	71,824
<b>MD</b>	<b>TANMH_MD</b>	<b>SubTotal</b>				<b>13,181</b>	<b>1,336</b>	<b>147,873</b>	<b>13,181</b>	<b>1,336</b>	<b>147,873</b>
MD	WBRTF	Stormwater-MS4	--		Aggregate	110,329	19,995	3,286,385	95,059	16,269	8,444,912
MD	WBRTF	wastewater-Industrial	INSIG		Aggregate	48	8	1,073	42	7	2,749
<b>MD</b>	<b>WBRTF</b>	<b>SubTotal</b>				<b>110,377</b>	<b>20,004</b>	<b>3,287,458</b>	<b>95,100</b>	<b>16,276</b>	<b>8,447,661</b>
MD	WICMH	Agriculture-CAFO	--		Aggregate	4,348	380	0	4,177	370	0
MD	WICMH	Stormwater-MS4	--		Aggregate	26,962	5,083	780,472	25,303	4,879	950,312
MD	WICMH	wastewater-Industrial	INSIG		Aggregate	3,570	822	16,727	3,157	792	23,892
MD	WICMH	wastewater-Municipal	INSIG		Aggregate	248	39	184	248	39	184
MD	WICMH	wastewater-Municipal	SIG	MD0020532	DELMAR WWTP	5,504	413	41,279	4,155	332	69,696
MD	WICMH	wastewater-Municipal	SIG	MD0021571	SALISBURY WWTP	81,760	6,132	613,203	81,760	6,132	613,203
MD	WICMH	wastewater-Municipal	SIG	MD0052990	FRUITLAND WWTP	7,491	562	56,184	7,491	562	56,184
<b>MD</b>	<b>WICMH</b>	<b>SubTotal</b>				<b>129,883</b>	<b>13,430</b>	<b>1,508,049</b>	<b>126,291</b>	<b>13,107</b>	<b>1,713,471</b>



Appendix B1 - Point Source Interim Target Loads for Maryland's Phase I Plan

STATE	Chesapeake Bay Segment	Sourcename	Type	NPDES	Facility	EOS TN 2017 (lbs\yr)	EOS TP 2017 (lbs\yr)	EOS TSS 2017 (lbs\yr)	DEL TN 2017 (lbs\yr)	DEL TP 2017 (lbs\yr)	DEL TSS 2017 (lbs\yr)
MD	WSTMH	Stormwater-MS4	--		Aggregate	4,684	649	127,329	4,684	649	127,329
MD	WSTMH	wastewater-Industrial	INSIG		Aggregate	1,297	463	4,355	1,297	463	4,355
<b>MD</b>	<b>WSTMH</b>	<b>SubTotal</b>				<b>5,980</b>	<b>1,112</b>	<b>131,684</b>	<b>5,980</b>	<b>1,112</b>	<b>131,684</b>

<sup>1</sup>MD-MASNV Masonville Dredge Material Containment Facility: During 2015, Masonville TN and TP loads (net) are required in the discharge permit to become zero (in place of 231,382 lbs/year TN and 3,620 lbs/year TP).

<sup>2</sup>MD0001201 Severstal Sparrows Point: This does not include the additional applicable allocation for Back River 002 discharging via Severstal outfalls. By 2014, Severstal TN load allocation may decrease by as much as 82,000 lbs/year as the result of a pending revised 301(g) variance determination for ammonia.

<sup>3</sup>MD0001775 Erachem: Effective September 2013

<sup>4</sup>MD0021199 Blue Plains: To date, MDE has resolved the flow and load issue for Nitrogen related to Blue Plains discharge. Essentially, the nitrogen loads equivalent to 6.0 MGD ENR effluent condition will be transferred to Seneca. Blue Plains will retain the flow capacity of 196 mgd allocated to MD with the understanding that Blue Plains would be required to offset or discharge at low concentrations if they intend to use the full MD capacity. As to Phosphorus, MDE will coordinate with WSSC to clarify the distribution of Phosphorous load allocations between Blue Plains and Seneca WWTPs. MDE will also work with EPA to clarify the 0.1 mgd flow issue at Blue Plains because this 0.1 mgd is from a federal facility.

<sup>5</sup>MD0021491 Seneca: see #4

<sup>6</sup>Conococheague (MD0063509):TN load of 28,134 lb/yr TN and TP load of 13 lb/yr, previously associated with GSTAutoleather (MD0053431), may be allocated to this facility upon permit renewal in accordance with Washington County water and sewer plan. In the interim, the allocation is listed in the minor industrial loadings as the previous industrial facility is no longer operating and no longer holds an NPDES permit.

Nutrient or sediment information is not available for every NPDES permittee in Maryland's Chesapeake Bay watershed who was discharging under a permit at the time of the EPA Bay TMDL. To the extent that such discharges were occurring during the model calibration process, they are indirectly included in the results and therefore would assume to be included in the total load assigned in the TMDL. However, due to lack of specific information, the majority of these discharges have been assigned wasteload allocations in the input deck based on default assumptions regarding flow and concentrations, where available. These facilities should provide, at a minimum, nutrient and/or TSS monitoring data with their next NPDES permit renewal application. Renewed NPDES permits for these discharges may require monitoring to verify existing loads or to (1) verify that these loads do not contribute to any exceedance of the WLAs (determination of no reasonable potential to contribute to an exceedance of local WQS and/or Bay TMDL WLA). Appropriate permit requirements consistent with the local WQS and /or Bay TMDL WLA (where monitoring data shows reasonable potential to contribute to an exceedance of local WQS and/or Bay TMDL WLA) will also be imposed at that time.

As a result, Maryland may include more specific information on these facilities in future Phases of its WIP that may be used to initiate modifications to the TMDL wasteload allocations.

# Detailed Final Targets for Maryland's Phase I Watershed Implementation Plan

Appendix B1 - Nonpoint Source Final Target Loads for Maryland's Phase I Plan

STATE	Chesapeake Bay Segment	Sourcename	EOS TN 2020 (lbs/yr)	2020 (lbs/yr)	EOS TSS 2020 (lbs/yr)	DEL TN 2020 (lbs/yr)	2020 (lbs/yr)	DEL TSS 2020 (lbs/yr)
MD	ANATF_DC	Agriculture	176	21	10,807	176	21	10,807
MD	ANATF_DC	Forest	6,302	336	79,359	6,302	336	79,359
MD	ANATF_DC	NonTidal-Atdep	4	0	0	4	0	0
MD	ANATF_DC	Onsite	298	0	0	298	0	0
<b>MD</b>	<b>ANATF_DC</b>	<b>Subtotal</b>	<b>6,780</b>	<b>357</b>	<b>90,167</b>	<b>6,780</b>	<b>357</b>	<b>90,167</b>
MD	ANATF_MD	Agriculture	53,882	3,147	1,567,107	29,302	2,749	12,617,557
MD	ANATF_MD	Forest	136,605	4,920	1,323,609	86,013	4,366	10,303,787
MD	ANATF_MD	NonTidal-Atdep	1,453	93	0	1,395	93	0
MD	ANATF_MD	Onsite	43,343	0	0	32,648	0	0
<b>MD</b>	<b>ANATF_MD</b>	<b>Subtotal</b>	<b>235,283</b>	<b>8,160</b>	<b>2,890,716</b>	<b>149,357</b>	<b>7,208</b>	<b>22,921,343</b>
MD	BACOH	Agriculture	513	66	59,696	512	66	59,726
MD	BACOH	Forest	12,361	640	295,665	11,304	623	350,469
MD	BACOH	NonTidal-Atdep	1,794	103	0	1,597	99	0
MD	BACOH	Onsite	9,777	0	0	9,695	0	0
<b>MD</b>	<b>BACOH</b>	<b>Subtotal</b>	<b>24,445</b>	<b>808</b>	<b>355,360</b>	<b>23,108</b>	<b>788</b>	<b>410,195</b>
MD	BIGMH	Agriculture	30,548	4,780	355,341	30,548	4,780	355,341
MD	BIGMH	Forest	25,473	2,005	222,764	25,473	2,005	222,764
MD	BIGMH	NonTidal-Atdep	7,348	370	0	7,348	370	0
MD	BIGMH	Onsite	5,287	0	0	5,287	0	0
MD	BIGMH	Urban	2,710	307	24,098	2,710	307	24,098
<b>MD</b>	<b>BIGMH</b>	<b>Subtotal</b>	<b>71,365</b>	<b>7,462</b>	<b>602,203</b>	<b>71,365</b>	<b>7,462</b>	<b>602,203</b>
MD	BOHOH	Agriculture	93,969	11,459	2,928,514	93,969	11,459	2,928,514
MD	BOHOH	Forest	25,048	1,627	239,105	25,048	1,627	239,105
MD	BOHOH	NonTidal-Atdep	1,829	105	0	1,829	105	0
MD	BOHOH	Onsite	7,138	0	0	7,138	0	0
<b>MD</b>	<b>BOHOH</b>	<b>Subtotal</b>	<b>127,984</b>	<b>13,191</b>	<b>3,167,619</b>	<b>127,984</b>	<b>13,191</b>	<b>3,167,619</b>
MD	BSHOH	Agriculture	126,568	6,447	9,060,489	97,134	5,691	10,010,543
MD	BSHOH	Forest	138,078	3,613	5,320,063	113,168	3,243	5,963,157
MD	BSHOH	NonTidal-Atdep	3,740	235	0	3,512	221	0
MD	BSHOH	Onsite	88,851	0	0	68,201	0	0
<b>MD</b>	<b>BSHOH</b>	<b>Subtotal</b>	<b>357,237</b>	<b>10,296</b>	<b>14,380,551</b>	<b>282,015</b>	<b>9,155</b>	<b>15,973,700</b>
MD	C&DOH_DE	Agriculture	91	12	3,900	91	12	3,900
MD	C&DOH_DE	Forest	10	1	112	10	1	112
MD	C&DOH_DE	Onsite	4	0	0	4	0	0
<b>MD</b>	<b>C&amp;DOH_DE</b>	<b>Subtotal</b>	<b>105</b>	<b>13</b>	<b>4,012</b>	<b>105</b>	<b>13</b>	<b>4,012</b>

Appendix B1 - Nonpoint Source Final Target Loads for Maryland's Phase I Plan

STATE	Chesapeake Bay Segment	Sourcename	EOS TN 2020 (lbs/yr)	2020 (lbs/yr)	EOS TSS 2020 (lbs/yr)	DEL TN 2020 (lbs/yr)	2020 (lbs/yr)	DEL TSS 2020 (lbs/yr)
MD	C&DOH_MD	Agriculture	20,590	2,672	859,471	20,590	2,672	859,471
MD	C&DOH_MD	Forest	9,892	643	110,042	9,892	643	110,042
MD	C&DOH_MD	NonTidal-Atdep	1,718	99	0	1,718	99	0
MD	C&DOH_MD	Onsite	5,654	0	0	5,654	0	0
<b>MD</b>	<b>C&amp;DOH_MD</b>	<b>Subtotal</b>	<b>37,855</b>	<b>3,413</b>	<b>969,513</b>	<b>37,855</b>	<b>3,413</b>	<b>969,513</b>
MD	CB1TF	Agriculture	679,757	38,846	54,023,696	579,171	33,461	49,335,019
MD	CB1TF	Forest	507,541	12,599	16,589,261	444,608	11,090	15,026,259
MD	CB1TF	NonTidal-Atdep	57,482	3,443	0	54,057	3,075	0
MD	CB1TF	Onsite	110,030	0	0	95,673	0	0
<b>MD</b>	<b>CB1TF</b>	<b>Subtotal</b>	<b>1,354,810</b>	<b>54,889</b>	<b>70,612,957</b>	<b>1,173,509</b>	<b>47,626</b>	<b>64,361,278</b>
MD	CB2OH	Agriculture	164,877	20,526	6,198,765	164,877	20,526	6,198,765
MD	CB2OH	Forest	66,476	3,902	1,252,750	66,476	3,902	1,252,750
MD	CB2OH	NonTidal-Atdep	7,856	475	0	7,856	475	0
MD	CB2OH	Onsite	11,900	0	0	11,900	0	0
MD	CB2OH	Urban	1,774	189	22,624	1,774	189	22,624
<b>MD</b>	<b>CB2OH</b>	<b>Subtotal</b>	<b>252,884</b>	<b>25,092</b>	<b>7,474,139</b>	<b>252,884</b>	<b>25,092</b>	<b>7,474,139</b>
MD	CB3MH	Agriculture	44,959	5,492	1,680,340	44,959	5,492	1,680,340
MD	CB3MH	Forest	13,313	849	214,283	13,313	849	214,283
MD	CB3MH	NonTidal-Atdep	3,712	222	0	3,712	222	0
MD	CB3MH	Onsite	7,093	0	0	7,093	0	0
MD	CB3MH	Urban	3,248	385	62,772	3,248	385	62,772
<b>MD</b>	<b>CB3MH</b>	<b>Subtotal</b>	<b>72,325</b>	<b>6,948</b>	<b>1,957,395</b>	<b>72,325</b>	<b>6,948</b>	<b>1,957,395</b>
MD	CB4MH	Agriculture	38,289	5,488	1,779,285	38,289	5,488	1,779,285
MD	CB4MH	Forest	85,540	5,631	1,164,827	85,540	5,631	1,164,827
MD	CB4MH	NonTidal-Atdep	13,207	869	0	13,207	869	0
MD	CB4MH	Onsite	76,719	0	0	76,719	0	0
MD	CB4MH	Urban	18,813	2,203	314,179	18,813	2,203	314,179
<b>MD</b>	<b>CB4MH</b>	<b>Subtotal</b>	<b>232,568</b>	<b>14,191</b>	<b>3,258,291</b>	<b>232,568</b>	<b>14,191</b>	<b>3,258,291</b>
MD	CB5MH_MD	Agriculture	15,872	2,791	728,726	15,872	2,791	728,726
MD	CB5MH_MD	Forest	26,844	1,824	536,857	26,844	1,824	536,857
MD	CB5MH_MD	NonTidal-Atdep	8,725	633	0	8,725	633	0
MD	CB5MH_MD	Onsite	23,627	0	0	23,627	0	0
MD	CB5MH_MD	Urban	11,316	1,730	247,930	11,316	1,730	247,930
<b>MD</b>	<b>CB5MH_MD</b>	<b>Subtotal</b>	<b>86,384</b>	<b>6,977</b>	<b>1,513,513</b>	<b>86,384</b>	<b>6,977</b>	<b>1,513,513</b>

Appendix B1 - Nonpoint Source Final Target Loads for Maryland's Phase I Plan

STATE	Chesapeake Bay Segment	Sourcename	EOS TN 2020 (lbs/yr)	2020 (lbs/yr)	EOS TSS 2020 (lbs/yr)	DEL TN 2020 (lbs/yr)	2020 (lbs/yr)	DEL TSS 2020 (lbs/yr)
MD	CHOMH1	Agriculture	169,166	25,342	3,474,816	169,166	25,342	3,474,816
MD	CHOMH1	Forest	33,820	2,772	505,233	33,820	2,772	505,233
MD	CHOMH1	NonTidal-Atdep	9,317	615	0	9,317	615	0
MD	CHOMH1	Onsite	31,774	0	0	31,774	0	0
MD	CHOMH1	Urban	38,837	4,503	587,562	38,837	4,503	587,562
<b>MD</b>	<b>CHOMH1</b>	<b>Subtotal</b>	<b>282,914</b>	<b>33,233</b>	<b>4,567,610</b>	<b>282,914</b>	<b>33,233</b>	<b>4,567,610</b>
MD	CHOMH2	Agriculture	187,909	24,756	2,613,232	187,909	24,756	2,613,232
MD	CHOMH2	Forest	23,008	1,867	257,111	23,008	1,867	257,111
MD	CHOMH2	NonTidal-Atdep	4,786	316	0	4,786	316	0
MD	CHOMH2	Onsite	14,289	0	0	14,289	0	0
MD	CHOMH2	Urban	9,231	1,062	108,587	9,231	1,062	108,587
<b>MD</b>	<b>CHOMH2</b>	<b>Subtotal</b>	<b>239,223</b>	<b>28,001</b>	<b>2,978,930</b>	<b>239,223</b>	<b>28,001</b>	<b>2,978,930</b>
MD	CHOOH	Agriculture	386,521	50,501	3,593,240	386,521	50,501	3,593,240
MD	CHOOH	Forest	48,262	3,754	348,113	48,262	3,754	348,113
MD	CHOOH	NonTidal-Atdep	6,590	373	0	6,590	373	0
MD	CHOOH	Onsite	24,135	0	0	24,135	0	0
MD	CHOOH	Urban	9,535	1,077	74,055	9,535	1,077	74,055
<b>MD</b>	<b>CHOOH</b>	<b>Subtotal</b>	<b>475,043</b>	<b>55,704</b>	<b>4,015,407</b>	<b>475,043</b>	<b>55,704</b>	<b>4,015,407</b>
MD	CHOTF	Agriculture	1,070,507	111,900	12,164,643	913,896	104,063	16,135,427
MD	CHOTF	Forest	153,568	10,683	1,180,818	132,655	9,930	1,533,178
MD	CHOTF	NonTidal-Atdep	5,067	245	0	4,476	229	0
MD	CHOTF	Onsite	48,265	0	0	42,803	0	0
MD	CHOTF	Urban	25,937	2,712	239,593	23,962	2,615	268,859
<b>MD</b>	<b>CHOTF</b>	<b>Subtotal</b>	<b>1,303,344</b>	<b>125,540</b>	<b>13,585,054</b>	<b>1,117,792</b>	<b>116,838</b>	<b>17,937,463</b>
MD	CHSMH	Agriculture	321,305	38,622	11,128,748	321,305	38,622	11,128,748
MD	CHSMH	Forest	63,240	3,932	905,395	63,240	3,932	905,395
MD	CHSMH	NonTidal-Atdep	7,799	466	0	7,799	466	0
MD	CHSMH	Onsite	19,296	0	0	19,296	0	0
MD	CHSMH	Urban	14,912	1,723	257,921	14,912	1,723	257,921
<b>MD</b>	<b>CHSMH</b>	<b>Subtotal</b>	<b>426,553</b>	<b>44,742</b>	<b>12,292,064</b>	<b>426,553</b>	<b>44,742</b>	<b>12,292,064</b>

Appendix B1 - Nonpoint Source Final Target Loads for Maryland's Phase I Plan

STATE	Chesapeake Bay Segment	Sourcename	EOS TN 2020 (lbs/yr)	2020 (lbs/yr)	EOS TSS 2020 (lbs/yr)	DEL TN 2020 (lbs/yr)	2020 (lbs/yr)	DEL TSS 2020 (lbs/yr)
MD	CHSOH	Agriculture	404,404	49,223	8,714,940	404,404	49,223	8,714,940
MD	CHSOH	Forest	53,660	3,307	480,797	53,660	3,307	480,797
MD	CHSOH	NonTidal-Atdep	4,688	280	0	4,688	280	0
MD	CHSOH	Onsite	18,046	0	0	18,046	0	0
MD	CHSOH	Urban	10,595	1,265	136,975	10,595	1,265	136,975
<b>MD</b>	<b>CHSOH</b>	<b>Subtotal</b>	<b>491,394</b>	<b>54,074</b>	<b>9,332,711</b>	<b>491,394</b>	<b>54,074</b>	<b>9,332,711</b>
MD	CHSTF	Agriculture	386,228	43,786	8,925,320	335,500	40,859	11,133,868
MD	CHSTF	Forest	70,962	4,367	675,117	61,019	4,031	857,381
MD	CHSTF	NonTidal-Atdep	2,989	179	0	2,658	168	0
MD	CHSTF	Onsite	15,223	0	0	13,459	0	0
MD	CHSTF	Urban	7,703	821	83,876	6,743	765	103,548
<b>MD</b>	<b>CHSTF</b>	<b>Subtotal</b>	<b>483,105</b>	<b>49,153</b>	<b>9,684,313</b>	<b>419,379</b>	<b>45,823</b>	<b>12,094,797</b>
MD	EASMH	Agriculture	373,163	51,523	8,162,980	373,163	51,523	8,162,980
MD	EASMH	Forest	76,365	5,225	1,017,728	76,365	5,225	1,017,728
MD	EASMH	NonTidal-Atdep	9,511	601	0	9,511	601	0
MD	EASMH	Onsite	53,425	0	0	53,425	0	0
MD	EASMH	Urban	41,366	4,579	634,499	41,366	4,579	634,499
<b>MD</b>	<b>EASMH</b>	<b>Subtotal</b>	<b>553,829</b>	<b>61,927</b>	<b>9,815,207</b>	<b>553,829</b>	<b>61,927</b>	<b>9,815,207</b>
MD	ELKOH	Agriculture	132,144	10,877	5,360,781	126,120	10,641	5,758,400
MD	ELKOH	Forest	101,659	4,845	1,215,347	98,137	4,757	1,294,356
MD	ELKOH	NonTidal-Atdep	3,520	202	0	3,520	202	0
MD	ELKOH	Onsite	50,558	0	0	49,369	0	0
<b>MD</b>	<b>ELKOH</b>	<b>Subtotal</b>	<b>287,881</b>	<b>15,925</b>	<b>6,576,128</b>	<b>277,145</b>	<b>15,600</b>	<b>7,052,756</b>
MD	FSBMH	Agriculture	276,860	42,332	3,001,442	266,542	41,656	3,414,499
MD	FSBMH	Forest	174,958	14,060	1,070,718	172,796	13,974	1,121,747
MD	FSBMH	NonTidal-Atdep	161,489	10,747	0	161,489	10,747	0
MD	FSBMH	Onsite	10,335	0	0	9,993	0	0
MD	FSBMH	Urban	7,098	888	37,730	7,039	884	40,026
<b>MD</b>	<b>FSBMH</b>	<b>Subtotal</b>	<b>630,740</b>	<b>68,026</b>	<b>4,109,889</b>	<b>617,858</b>	<b>67,261</b>	<b>4,576,273</b>
MD	GUNOH	Agriculture	941,852	24,548	69,920,377	329,965	12,605	26,236,836
MD	GUNOH	Forest	675,496	11,522	26,112,258	313,963	7,053	11,764,187
MD	GUNOH	NonTidal-Atdep	45,882	2,078	0	17,770	1,055	0
MD	GUNOH	Onsite	271,997	0	0	130,706	0	0
<b>MD</b>	<b>GUNOH</b>	<b>Subtotal</b>	<b>1,935,227</b>	<b>38,149</b>	<b>96,032,636</b>	<b>792,403</b>	<b>20,713</b>	<b>38,001,024</b>

Appendix B1 - Nonpoint Source Final Target Loads for Maryland's Phase I Plan

STATE	Chesapeake Bay Segment	Sourcename	EOS TN 2020 (lbs/yr)	2020 (lbs/yr)	EOS TSS 2020 (lbs/yr)	DEL TN 2020 (lbs/yr)	2020 (lbs/yr)	DEL TSS 2020 (lbs/yr)
MD	HNGMH	Agriculture	8,170	1,279	186,128	8,170	1,279	186,128
MD	HNGMH	Forest	24,644	1,981	291,695	24,644	1,981	291,695
MD	HNGMH	NonTidal-Atdep	8,236	548	0	8,236	548	0
MD	HNGMH	Onsite	2,018	0	0	2,018	0	0
MD	HNGMH	Urban	3,681	506	53,582	3,681	506	53,582
<b>MD</b>	<b>HNGMH</b>	<b>Subtotal</b>	<b>46,750</b>	<b>4,314</b>	<b>531,405</b>	<b>46,750</b>	<b>4,314</b>	<b>531,405</b>
MD	LCHMH	Agriculture	98,243	13,995	2,355,200	98,243	13,995	2,355,200
MD	LCHMH	Forest	48,669	3,913	640,374	48,669	3,913	640,374
MD	LCHMH	NonTidal-Atdep	16,736	1,114	0	16,736	1,114	0
MD	LCHMH	Onsite	9,772	0	0	9,772	0	0
MD	LCHMH	Urban	6,467	758	102,359	6,467	758	102,359
<b>MD</b>	<b>LCHMH</b>	<b>Subtotal</b>	<b>179,887</b>	<b>19,780</b>	<b>3,097,933</b>	<b>179,887</b>	<b>19,780</b>	<b>3,097,933</b>
MD	MAGMH	Agriculture	1,511	254	94,871	1,511	254	94,871
MD	MAGMH	Forest	20,514	1,418	440,355	20,514	1,418	440,355
MD	MAGMH	NonTidal-Atdep	1,648	101	0	1,648	101	0
MD	MAGMH	Onsite	67,823	0	0	67,823	0	0
<b>MD</b>	<b>MAGMH</b>	<b>Subtotal</b>	<b>91,496</b>	<b>1,772</b>	<b>535,226</b>	<b>91,496</b>	<b>1,772</b>	<b>535,226</b>
MD	MANMH	Agriculture	90,197	14,270	690,633	90,197	14,270	690,633
MD	MANMH	Forest	73,517	5,787	457,495	73,517	5,787	457,495
MD	MANMH	NonTidal-Atdep	24,474	1,232	0	24,474	1,232	0
MD	MANMH	Onsite	13,933	0	0	13,933	0	0
MD	MANMH	Urban	9,254	1,212	68,234	9,254	1,212	68,234
<b>MD</b>	<b>MANMH</b>	<b>Subtotal</b>	<b>211,375</b>	<b>22,502</b>	<b>1,216,362</b>	<b>211,375</b>	<b>22,502</b>	<b>1,216,362</b>
MD	MATTF	Agriculture	26,994	3,150	2,300,089	15,679	2,425	2,152,888
MD	MATTF	Forest	92,101	5,250	1,700,653	63,249	4,355	1,628,269
MD	MATTF	NonTidal-Atdep	1,857	130	0	1,284	109	0
MD	MATTF	Onsite	75,569	0	0	44,032	0	0
<b>MD</b>	<b>MATTF</b>	<b>Subtotal</b>	<b>196,521</b>	<b>8,531</b>	<b>4,000,743</b>	<b>124,244</b>	<b>6,889</b>	<b>3,781,157</b>
MD	MIDOH	Agriculture	558	57	48,777	558	57	48,777
MD	MIDOH	Forest	6,693	342	187,708	6,693	342	187,708
MD	MIDOH	NonTidal-Atdep	694	41	0	694	41	0
MD	MIDOH	Onsite	18,951	0	0	18,951	0	0
<b>MD</b>	<b>MIDOH</b>	<b>Subtotal</b>	<b>26,896</b>	<b>440</b>	<b>236,484</b>	<b>26,896</b>	<b>440</b>	<b>236,484</b>

Appendix B1 - Nonpoint Source Final Target Loads for Maryland's Phase I Plan

STATE	Chesapeake Bay Segment	Sourcename	EOS TN 2020 (lbs/yr)	2020 (lbs/yr)	EOS TSS 2020 (lbs/yr)	DEL TN 2020 (lbs/yr)	2020 (lbs/yr)	DEL TSS 2020 (lbs/yr)
MD	NANMH	Agriculture	40,972	5,353	417,426	40,972	5,353	417,426
MD	NANMH	Forest	51,526	3,266	299,174	51,526	3,266	299,174
MD	NANMH	NonTidal-Atdep	9,975	551	0	9,975	551	0
MD	NANMH	Onsite	5,006	0	0	5,006	0	0
MD	NANMH	Urban	3,541	380	26,665	3,541	380	26,665
<b>MD</b>	<b>NANMH</b>	<b>Subtotal</b>	<b>111,021</b>	<b>9,550</b>	<b>743,265</b>	<b>111,021</b>	<b>9,550</b>	<b>743,265</b>
MD	NANOH	Agriculture	430,117	56,684	5,150,844	408,038	54,742	5,659,365
MD	NANOH	Forest	149,173	10,279	1,030,430	144,364	9,972	1,125,256
MD	NANOH	NonTidal-Atdep	17,638	976	0	17,523	971	0
MD	NANOH	Onsite	24,922	0	0	24,144	0	0
MD	NANOH	Urban	11,297	1,409	121,776	11,110	1,393	125,404
<b>MD</b>	<b>NANOH</b>	<b>Subtotal</b>	<b>633,147</b>	<b>69,347</b>	<b>6,303,050</b>	<b>605,179</b>	<b>67,078</b>	<b>6,910,025</b>
MD	NANTF_DE	Agriculture	10,878	1,444	89,058	10,878	1,444	89,058
MD	NANTF_DE	Forest	4,184	269	13,093	4,184	269	13,093
MD	NANTF_DE	NonTidal-Atdep	46	2	0	46	2	0
MD	NANTF_DE	Onsite	875	0	0	875	0	0
MD	NANTF_DE	Urban	312	37	2,006	312	37	2,006
<b>MD</b>	<b>NANTF_DE</b>	<b>Subtotal</b>	<b>16,295</b>	<b>1,752</b>	<b>104,157</b>	<b>16,295</b>	<b>1,752</b>	<b>104,157</b>
MD	NANTF_MD	Agriculture	37,868	5,250	420,653	37,868	5,250	420,653
MD	NANTF_MD	Forest	8,678	666	63,324	8,678	666	63,324
MD	NANTF_MD	NonTidal-Atdep	366	24	0	366	24	0
MD	NANTF_MD	Onsite	2,256	0	0	2,256	0	0
MD	NANTF_MD	Urban	936	117	11,845	936	117	11,845
<b>MD</b>	<b>NANTF_MD</b>	<b>Subtotal</b>	<b>50,104</b>	<b>6,057</b>	<b>495,823</b>	<b>50,104</b>	<b>6,057</b>	<b>495,823</b>
MD	NORTF	Agriculture	119,710	4,816	8,296,320	96,142	4,266	9,154,058
MD	NORTF	Forest	72,050	2,393	1,412,245	60,835	2,231	1,541,358
MD	NORTF	NonTidal-Atdep	1,911	110	0	1,717	104	0
MD	NORTF	Onsite	22,556	0	0	18,667	0	0
<b>MD</b>	<b>NORTF</b>	<b>Subtotal</b>	<b>216,227</b>	<b>7,320</b>	<b>9,708,566</b>	<b>177,361</b>	<b>6,600</b>	<b>10,695,417</b>
MD	PATMH	Agriculture	288,106	10,446	22,804,376	182,935	7,208	17,583,660
MD	PATMH	Forest	345,765	9,371	17,313,542	238,782	7,006	13,791,444
MD	PATMH	NonTidal-Atdep	12,122	680	0	9,896	558	0
MD	PATMH	Onsite	245,516	0	0	174,537	0	0
<b>MD</b>	<b>PATMH</b>	<b>Subtotal</b>	<b>891,508</b>	<b>20,498</b>	<b>40,117,918</b>	<b>606,149</b>	<b>14,772</b>	<b>31,375,105</b>



Appendix B1 - Nonpoint Source Final Target Loads for Maryland's Phase I Plan

STATE	Chesapeake Bay Segment	Sourcename	EOS TN 2020 (lbs/yr)	2020 (lbs/yr)	EOS TSS 2020 (lbs/yr)	DEL TN 2020 (lbs/yr)	2020 (lbs/yr)	DEL TSS 2020 (lbs/yr)
MD	PAXMH	Agriculture	104,051	14,880	5,255,719	104,051	14,880	5,255,719
MD	PAXMH	Forest	165,011	10,591	2,199,643	165,011	10,591	2,199,643
MD	PAXMH	NonTidal-Atdep	5,314	392	0	5,314	392	0
MD	PAXMH	Onsite	147,744	0	0	147,744	0	0
MD	PAXMH	Urban	34,497	4,770	615,567	34,497	4,770	615,567
<b>MD</b>	<b>PAXMH</b>	<b>Subtotal</b>	<b>456,617</b>	<b>30,632</b>	<b>8,070,930</b>	<b>456,617</b>	<b>30,632</b>	<b>8,070,930</b>
MD	PAXOH	Agriculture	81,491	11,381	6,256,930	80,255	11,341	6,242,518
MD	PAXOH	Forest	107,905	6,470	1,237,189	104,962	6,417	1,230,546
MD	PAXOH	NonTidal-Atdep	4,428	311	0	4,408	310	0
MD	PAXOH	Onsite	58,551	0	0	56,922	0	0
MD	PAXOH	Urban	21,244	2,528	250,660	20,634	2,505	248,590
<b>MD</b>	<b>PAXOH</b>	<b>Subtotal</b>	<b>273,619</b>	<b>20,691</b>	<b>7,744,779</b>	<b>267,180</b>	<b>20,573</b>	<b>7,721,654</b>
MD	PAXTF	Agriculture	534,008	41,862	46,157,276	223,697	25,449	25,094,527
MD	PAXTF	Forest	602,315	24,017	23,446,306	286,466	15,124	15,602,923
MD	PAXTF	NonTidal-Atdep	19,372	1,038	0	9,413	648	0
MD	PAXTF	Onsite	306,966	0	0	163,120	0	0
MD	PAXTF	Urban	2,874	331	36,067	2,874	331	36,067
<b>MD</b>	<b>PAXTF</b>	<b>Subtotal</b>	<b>1,465,536</b>	<b>67,249</b>	<b>69,639,649</b>	<b>685,570</b>	<b>41,553</b>	<b>40,733,517</b>
MD	PISTF	Agriculture	20,679	2,559	2,238,574	17,592	2,402	2,117,568
MD	PISTF	Forest	59,294	3,234	1,105,390	51,014	3,042	1,046,747
MD	PISTF	NonTidal-Atdep	598	39	0	524	37	0
MD	PISTF	Onsite	23,299	0	0	19,839	0	0
<b>MD</b>	<b>PISTF</b>	<b>Subtotal</b>	<b>103,870</b>	<b>5,832</b>	<b>3,343,965</b>	<b>88,969</b>	<b>5,481</b>	<b>3,164,315</b>
MD	POCMH_MD	Agriculture	44,867	6,854	585,029	36,567	6,388	761,651
MD	POCMH_MD	Forest	43,920	3,430	406,852	39,031	3,287	474,589
MD	POCMH_MD	NonTidal-Atdep	9,672	485	0	9,168	476	0
MD	POCMH_MD	Onsite	5,772	0	0	4,926	0	0
MD	POCMH_MD	Urban	2,730	311	24,596	2,525	302	27,963
<b>MD</b>	<b>POCMH_MD</b>	<b>Subtotal</b>	<b>106,961</b>	<b>11,080</b>	<b>1,016,476</b>	<b>92,217</b>	<b>10,453</b>	<b>1,264,202</b>
MD	POCOH_MD	Agriculture	36,614	5,359	451,651	36,614	5,359	451,651
MD	POCOH_MD	Forest	19,672	1,421	130,968	19,672	1,421	130,968
MD	POCOH_MD	NonTidal-Atdep	2,796	141	0	2,796	141	0
MD	POCOH_MD	Onsite	1,656	0	0	1,656	0	0
MD	POCOH_MD	Urban	478	60	6,342	478	60	6,342
<b>MD</b>	<b>POCOH_MD</b>	<b>Subtotal</b>	<b>61,218</b>	<b>6,981</b>	<b>588,961</b>	<b>61,218</b>	<b>6,981</b>	<b>588,961</b>

Appendix B1 - Nonpoint Source Final Target Loads for Maryland's Phase I Plan

STATE	Chesapeake Bay Segment	Sourcename	EOS TN 2020 (lbs/yr)	2020 (lbs/yr)	EOS TSS 2020 (lbs/yr)	DEL TN 2020 (lbs/yr)	2020 (lbs/yr)	DEL TSS 2020 (lbs/yr)
MD	POCOH_VA	Agriculture	39,818	6,079	546,231	39,818	6,079	546,231
MD	POCOH_VA	Forest	16,514	1,012	73,788	16,514	1,012	73,788
MD	POCOH_VA	NonTidal-Atdep	231	12	0	231	12	0
MD	POCOH_VA	Onsite	1,288	0	0	1,288	0	0
MD	POCOH_VA	Urban	939	153	16,098	939	153	16,098
<b>MD</b>	<b>POCOH_VA</b>	<b>Subtotal</b>	<b>58,791</b>	<b>7,255</b>	<b>636,117</b>	<b>58,791</b>	<b>7,255</b>	<b>636,117</b>
MD	POCTF	Agriculture	562,292	72,682	7,676,428	442,623	63,430	8,052,579
MD	POCTF	Forest	345,480	21,162	1,809,800	274,839	18,632	2,058,649
MD	POCTF	NonTidal-Atdep	8,330	415	0	7,809	399	0
MD	POCTF	Onsite	33,286	0	0	25,807	0	0
MD	POCTF	Urban	20,232	2,368	212,772	16,538	2,110	212,203
<b>MD</b>	<b>POCTF</b>	<b>Subtotal</b>	<b>969,619</b>	<b>96,627</b>	<b>9,699,000</b>	<b>767,616</b>	<b>84,571</b>	<b>10,323,430</b>
MD	POTMH_MD	Agriculture	413,449	58,433	18,058,936	366,529	56,457	33,111,911
MD	POTMH_MD	Forest	386,164	24,989	7,962,481	332,963	23,617	17,427,541
MD	POTMH_MD	NonTidal-Atdep	14,500	1,137	0	13,599	1,114	0
MD	POTMH_MD	Onsite	196,390	0	0	171,634	0	0
MD	POTMH_MD	Urban	53,898	7,575	1,051,368	48,958	7,415	2,495,074
<b>MD</b>	<b>POTMH_MD</b>	<b>Subtotal</b>	<b>1,064,401</b>	<b>92,133</b>	<b>27,072,785</b>	<b>933,683</b>	<b>88,603</b>	<b>53,034,527</b>
MD	POTOH1_MD	Agriculture	9,962	1,562	859,669	9,962	1,562	859,669
MD	POTOH1_MD	Forest	30,239	1,902	643,531	30,239	1,902	643,531
MD	POTOH1_MD	NonTidal-Atdep	1,738	138	0	1,738	138	0
MD	POTOH1_MD	Onsite	4,343	0	0	4,343	0	0
<b>MD</b>	<b>POTOH1_MD</b>	<b>Subtotal</b>	<b>46,281</b>	<b>3,603</b>	<b>1,503,199</b>	<b>46,281</b>	<b>3,603</b>	<b>1,503,199</b>
MD	POTOH2_MD	Agriculture	18,742	2,800	1,179,776	18,742	2,800	1,179,776
MD	POTOH2_MD	Forest	38,020	2,392	597,724	38,020	2,392	597,724
MD	POTOH2_MD	NonTidal-Atdep	530	42	0	530	42	0
MD	POTOH2_MD	Onsite	23,788	0	0	23,788	0	0
<b>MD</b>	<b>POTOH2_MD</b>	<b>Subtotal</b>	<b>81,080</b>	<b>5,234</b>	<b>1,777,500</b>	<b>81,080</b>	<b>5,234</b>	<b>1,777,500</b>
MD	POTOH3_MD	Agriculture	24,125	3,508	1,521,270	22,640	3,455	1,518,966
MD	POTOH3_MD	Forest	73,983	4,629	1,336,900	66,488	4,494	1,332,300
MD	POTOH3_MD	NonTidal-Atdep	3,702	295	0	3,661	294	0
MD	POTOH3_MD	Onsite	10,684	0	0	9,468	0	0
<b>MD</b>	<b>POTOH3_MD</b>	<b>Subtotal</b>	<b>112,495</b>	<b>8,432</b>	<b>2,858,170</b>	<b>102,258</b>	<b>8,243</b>	<b>2,851,267</b>

Appendix B1 - Nonpoint Source Final Target Loads for Maryland's Phase I Plan

STATE	Chesapeake Bay Segment	Sourcename	EOS TN 2020 (lbs/yr)	2020 (lbs/yr)	EOS TSS 2020 (lbs/yr)	DEL TN 2020 (lbs/yr)	2020 (lbs/yr)	DEL TSS 2020 (lbs/yr)
MD	POTTF_DC	Agriculture	23,553	810	3,944,098	10,096	524	3,292,687
MD	POTTF_DC	Forest	53,371	1,320	3,314,698	25,067	914	2,784,759
MD	POTTF_DC	NonTidal-Atdep	1,581	100	0	940	74	0
MD	POTTF_DC	Onsite	24,964	0	0	12,364	0	0
<b>MD</b>	<b>POTTF_DC</b>	<b>Subtotal</b>	<b>103,469</b>	<b>2,231</b>	<b>7,258,796</b>	<b>48,466</b>	<b>1,511</b>	<b>6,077,446</b>
MD	POTTF_MD	Agriculture	10,891,418	512,638	541,799,321	5,885,102	278,168	366,295,190
MD	POTTF_MD	Forest	5,505,649	178,930	95,282,073	2,551,285	92,488	63,173,939
MD	POTTF_MD	NonTidal-Atdep	181,044	10,903	0	124,143	5,815	0
MD	POTTF_MD	Onsite	780,089	0	0	445,476	0	0
MD	POTTF_MD	Urban	87,024	5,213	1,930,448	18,660	2,545	1,242,715
<b>MD</b>	<b>POTTF_MD</b>	<b>Subtotal</b>	<b>17,445,224</b>	<b>707,683</b>	<b>639,011,842</b>	<b>9,024,667</b>	<b>379,016</b>	<b>430,711,844</b>
MD	RHDMH	Agriculture	6,897	1,159	287,784	6,897	1,159	287,784
MD	RHDMH	Forest	10,748	743	187,027	10,748	743	187,027
MD	RHDMH	NonTidal-Atdep	981	60	0	981	60	0
MD	RHDMH	Onsite	2,005	0	0	2,005	0	0
<b>MD</b>	<b>RHDMH</b>	<b>Subtotal</b>	<b>20,632</b>	<b>1,962</b>	<b>474,811</b>	<b>20,632</b>	<b>1,962</b>	<b>474,811</b>
MD	SASOH	Agriculture	194,920	25,322	7,741,391	194,920	25,322	7,741,391
MD	SASOH	Forest	39,483	2,584	514,010	39,483	2,584	514,010
MD	SASOH	NonTidal-Atdep	4,445	260	0	4,445	260	0
MD	SASOH	Onsite	11,265	0	0	11,265	0	0
MD	SASOH	Urban	3,131	339	34,383	3,131	339	34,383
<b>MD</b>	<b>SASOH</b>	<b>Subtotal</b>	<b>253,244</b>	<b>28,505</b>	<b>8,289,784</b>	<b>253,244</b>	<b>28,505</b>	<b>8,289,784</b>
MD	SEVMH	Agriculture	6,316	939	256,989	6,316	939	256,989
MD	SEVMH	Forest	35,603	2,461	678,666	35,603	2,461	678,666
MD	SEVMH	NonTidal-Atdep	1,621	99	0	1,621	99	0
MD	SEVMH	Onsite	71,452	0	0	71,452	0	0
<b>MD</b>	<b>SEVMH</b>	<b>Subtotal</b>	<b>114,992</b>	<b>3,499</b>	<b>935,655</b>	<b>114,992</b>	<b>3,499</b>	<b>935,655</b>
MD	SOU MH	Agriculture	13,687	2,247	469,288	13,687	2,247	469,288
MD	SOU MH	Forest	40,906	2,827	602,477	40,906	2,827	602,477
MD	SOU MH	NonTidal-Atdep	2,577	157	0	2,577	157	0
MD	SOU MH	Onsite	41,534	0	0	41,534	0	0
<b>MD</b>	<b>SOU MH</b>	<b>Subtotal</b>	<b>98,704</b>	<b>5,232</b>	<b>1,071,766</b>	<b>98,704</b>	<b>5,232</b>	<b>1,071,766</b>

Appendix B1 - Nonpoint Source Final Target Loads for Maryland's Phase I Plan

STATE	Chesapeake Bay Segment	Sourcename	EOS TN 2020 (lbs/yr)	2020 (lbs/yr)	EOS TSS 2020 (lbs/yr)	DEL TN 2020 (lbs/yr)	2020 (lbs/yr)	DEL TSS 2020 (lbs/yr)
MD	TANMH_MD	Agriculture	5,098	810	67,356	5,098	810	67,356
MD	TANMH_MD	Forest	32,020	2,521	242,168	32,020	2,521	242,168
MD	TANMH_MD	NonTidal-Atdep	33,806	1,782	0	33,806	1,782	0
MD	TANMH_MD	Onsite	8,024	0	0	8,024	0	0
MD	TANMH_MD	Urban	7,598	938	106,112	7,598	938	106,112
<b>MD</b>	<b>TANMH_MD</b>	<b>Subtotal</b>	<b>86,546</b>	<b>6,051</b>	<b>415,636</b>	<b>86,546</b>	<b>6,051</b>	<b>415,636</b>
MD	WBRTF	Agriculture	28,301	3,851	2,853,424	24,614	3,129	7,312,384
MD	WBRTF	Forest	69,813	3,836	1,089,407	60,718	3,117	2,791,790
MD	WBRTF	NonTidal-Atdep	2,027	133	0	1,763	108	0
MD	WBRTF	Onsite	33,810	0	0	29,405	0	0
<b>MD</b>	<b>WBRTF</b>	<b>Subtotal</b>	<b>133,949</b>	<b>7,820</b>	<b>3,942,831</b>	<b>116,500</b>	<b>6,353</b>	<b>10,104,173</b>
MD	WICMH	Agriculture	201,829	27,663	2,430,436	190,848	26,701	2,817,473
MD	WICMH	Forest	173,791	11,088	933,831	166,858	10,768	1,037,388
MD	WICMH	NonTidal-Atdep	26,337	1,192	0	25,742	1,172	0
MD	WICMH	Onsite	71,429	0	0	65,670	0	0
MD	WICMH	Urban	56,095	7,189	657,166	51,751	6,744	832,884
<b>MD</b>	<b>WICMH</b>	<b>Subtotal</b>	<b>529,480</b>	<b>47,132</b>	<b>4,021,433</b>	<b>500,869</b>	<b>45,386</b>	<b>4,687,746</b>
MD	WSTMH	Agriculture	8,835	1,472	458,195	8,835	1,472	458,195
MD	WSTMH	Forest	8,892	615	176,402	8,892	615	176,402
MD	WSTMH	NonTidal-Atdep	597	36	0	597	36	0
MD	WSTMH	Onsite	4,193	0	0	4,193	0	0
<b>MD</b>	<b>WSTMH</b>	<b>Subtotal</b>	<b>22,517</b>	<b>2,123</b>	<b>634,597</b>	<b>22,517</b>	<b>2,123</b>	<b>634,597</b>

Appendix B1 - Point Source Final Target Loads for Maryland's Phase I Plan

STATE	Chesapeake Bay Segment	Sourcename	Type	NPDES	Facility	EOS TN 2020 (lbs/yr)	EOS TP 2020 (lbs/yr)	EOS TSS 2020 (lbs/yr)	DEL TN 2020 (lbs/yr)	DEL TP 2020 (lbs/yr)	DEL TSS 2020 (lbs/yr)
MD	ANATF_DC	Stormwater-MS4	--		Aggregate	39,090	6,357	783,504	39,090	6,357	783,504
MD	ANATF_DC	wastewater-Industrial	INSIG		Aggregate	70	27	7,450	70	27	7,450
<b>MD</b>	<b>ANATF_DC</b>	<b>SubTotal</b>				<b>39,160</b>	<b>6,384</b>	<b>790,954</b>	<b>39,160</b>	<b>6,384</b>	<b>790,954</b>
MD	ANATF_MD	Stormwater-MS4	--		Aggregate	469,711	34,972	5,288,893	277,713	31,414	45,526,477
MD	ANATF_MD	wastewater-Federal	SIG	MD0020842	USDA EAST-SIDE WWTP	7,553	566	56,647	7,574	579	855,013
MD	ANATF_MD	wastewater-Industrial	INSIG		Aggregate	1,506	15	23,351	1,508	15	348,405
MD	ANATF_MD	wastewater-Municipal	INSIG		Aggregate	7,213	1,202	18,273	7,233	1,229	275,811
<b>MD</b>	<b>ANATF_MD</b>	<b>SubTotal</b>				<b>485,983</b>	<b>36,755</b>	<b>5,387,164</b>	<b>294,029</b>	<b>33,237</b>	<b>47,005,706</b>
MD	BACOH	Stormwater-MS4	--		Aggregate	142,190	17,184	3,046,350	115,487	16,279	4,064,807
MD	BACOH	wastewater-Industrial	INSIG		Aggregate	1,287	331	8,556	1,062	317	12,774
MD	BACOH	wastewater-Municipal	SIG	MD0021555	BACK RIVER WWTP	2,192,803	109,640	16,446,024	2,192,803	109,640	16,446,024
<b>MD</b>	<b>BACOH</b>	<b>SubTotal</b>				<b>2,336,279</b>	<b>127,155</b>	<b>19,500,930</b>	<b>2,309,351</b>	<b>126,237</b>	<b>20,523,606</b>
MD	BIGMH	Agriculture-CAFO	--		Aggregate	652	54	0	652	54	0
MD	BIGMH	Stormwater-MS4	--		Aggregate	293	63	24,006	293	63	24,006
MD	BIGMH	wastewater-Municipal	INSIG		Aggregate	1,731	289	4,568	1,731	289	4,568
<b>MD</b>	<b>BIGMH</b>	<b>SubTotal</b>				<b>2,677</b>	<b>405</b>	<b>28,574</b>	<b>2,677</b>	<b>405</b>	<b>28,574</b>
MD	BOHOH	Stormwater-MS4	--		Aggregate	2,206	324	59,779	2,206	324	59,779
MD	BOHOH	wastewater-Industrial	INSIG		Aggregate	4	0	55	4	0	55
MD	BOHOH	wastewater-Municipal	INSIG		Aggregate	2,466	411	4,568	2,466	411	4,568
<b>MD</b>	<b>BOHOH</b>	<b>SubTotal</b>				<b>4,676</b>	<b>735</b>	<b>64,402</b>	<b>4,676</b>	<b>735</b>	<b>64,402</b>
MD	BSHOH	Stormwater-MS4	--		Aggregate	202,233	12,617	9,572,717	162,363	11,059	11,081,577
MD	BSHOH	wastewater-Federal	SIG	MD0021229	U.S. ARMY ABERDEEN PROVING GROUND- EDGEWOOD AREA	36,547	2,741	274,100	36,547	2,741	274,100
MD	BSHOH	wastewater-Industrial	INSIG		Aggregate	3,697	1,301	12,677	3,035	1,101	13,635
MD	BSHOH	wastewater-Municipal	SIG	MD0056545	SOD RUN WWTP	243,645	18,273	1,827,336	243,645	18,273	1,827,336
<b>MD</b>	<b>BSHOH</b>	<b>SubTotal</b>				<b>486,122</b>	<b>34,933</b>	<b>11,686,831</b>	<b>445,589</b>	<b>33,173</b>	<b>13,196,649</b>
MD	C&DOH_DE	Stormwater-MS4	--		Aggregate	1	0	14	1	0	14
<b>MD</b>	<b>C&amp;DOH_DE</b>	<b>SubTotal</b>				<b>1</b>	<b>0</b>	<b>14</b>	<b>1</b>	<b>0</b>	<b>14</b>
MD	C&DOH_MD	Stormwater-MS4	--		Aggregate	2,385	314	92,251	2,385	314	92,251
MD	C&DOH_MD	wastewater-Municipal	INSIG		Aggregate	8,569	1,428	15,350	8,569	1,428	15,350
<b>MD</b>	<b>C&amp;DOH_MD</b>	<b>SubTotal</b>				<b>10,954</b>	<b>1,742</b>	<b>107,601</b>	<b>10,954</b>	<b>1,742</b>	<b>107,601</b>

Appendix B1 - Point Source Final Target Loads for Maryland's Phase I Plan

STATE	Chesapeake Bay Segment	Sourcename	Type	NPDES	Facility	EOS TN 2020 (lbs/yr)	EOS TP 2020 (lbs/yr)	EOS TSS 2020 (lbs/yr)	DEL TN 2020 (lbs/yr)	DEL TP 2020 (lbs/yr)	DEL TSS 2020 (lbs/yr)
MD	CB1TF	Agriculture-CAFO	--		Aggregate	869	12	89	519	5	37
MD	CB1TF	Stormwater-MS4	--		Aggregate	127,898	8,828	5,003,164	119,064	8,395	4,856,228
MD	CB1TF	wastewater-Industrial	INSIG		Aggregate	16,649	334	45,698	16,647	333	45,666
MD	CB1TF	wastewater-Municipal	INSIG		Aggregate	30,669	5,112	69,439	26,069	4,575	67,848
MD	CB1TF	wastewater-Municipal	SIG	MD0020613	PERRYVILLE WWTP	20,101	1,508	150,755	20,101	1,508	150,755
MD	CB1TF	wastewater-Municipal	SIG	MD0021237	ABERDEEN PROVING GROUND	34,110	2,558	255,827	34,110	2,558	255,827
MD	CB1TF	wastewater-Municipal	SIG	MD0021563	ABERDEEN ADVANCED WWTP	48,729	3,655	365,467	48,729	3,655	365,467
MD	CB1TF	wastewater-Municipal	SIG	MD0021750	HAVRE DE GRACE WWTP	27,715	2,079	207,859	27,715	2,079	207,859
<b>MD</b>	<b>CB1TF</b>	<b>SubTotal</b>				<b>306,739</b>	<b>24,086</b>	<b>6,098,299</b>	<b>292,953</b>	<b>23,108</b>	<b>5,949,689</b>
MD	CB2OH	Agriculture-CAFO	--		Aggregate	349	22	236	349	22	236
MD	CB2OH	Stormwater-MS4	--		Aggregate	16,599	2,055	358,037	16,599	2,055	358,037
MD	CB2OH	wastewater-Industrial	INSIG		Aggregate	2	0	36	2	0	36
MD	CB2OH	wastewater-Industrial	SIG	MD-HARTM	Hart Miller Dredged Material C F	0	0	0	0	0	0
MD	CB2OH	wastewater-Municipal	INSIG		Aggregate	5,916	986	25,491	5,916	986	25,491
<b>MD</b>	<b>CB2OH</b>	<b>SubTotal</b>				<b>22,867</b>	<b>3,063</b>	<b>383,801</b>	<b>22,867</b>	<b>3,063</b>	<b>383,801</b>
MD	CB3MH	Agriculture-CAFO	--		Aggregate	132	9	51	132	9	51
MD	CB3MH	Stormwater-MS4	--		Aggregate	2,275	432	194,601	2,275	432	194,601
MD	CB3MH	wastewater-Industrial	INSIG		Aggregate	1,678	599	5,633	1,678	599	5,633
MD	CB3MH	wastewater-Municipal	SIG	MD0021644	BROADNECK WATER RECLAMATION FACILITY	73,093	5,482	548,201	73,093	5,482	548,201
MD	CB3MH	wastewater-Municipal	SIG	MD0023485	KENT ISLAND WWTP	36,547	2,741	274,100	36,547	2,741	274,100
<b>MD</b>	<b>CB3MH</b>	<b>SubTotal</b>				<b>113,726</b>	<b>9,263</b>	<b>1,022,587</b>	<b>113,726</b>	<b>9,263</b>	<b>1,022,587</b>
MD	CB4MH	Agriculture-CAFO	--		Aggregate	87	6	0	87	6	0
MD	CB4MH	Stormwater-MS4	--		Aggregate	20,462	2,926	715,437	20,462	2,926	715,437
MD	CB4MH	wastewater-Industrial	INSIG		Aggregate	1,303	463	4,446	1,303	463	4,446
MD	CB4MH	wastewater-Municipal	INSIG		Aggregate	5,364	894	19,187	5,364	894	19,187
MD	CB4MH	wastewater-Municipal	SIG	MD0020281	CHESAPEAKE BEACH WWTP	18,273	1,371	137,050	18,273	1,371	137,050
MD	CB4MH	wastewater-Municipal	SIG	MD0024350	BROADWATER WATER RECLAMATION FACILITY	24,364	1,827	182,734	24,364	1,827	182,734
<b>MD</b>	<b>CB4MH</b>	<b>SubTotal</b>				<b>69,854</b>	<b>7,487</b>	<b>1,058,853</b>	<b>69,854</b>	<b>7,487</b>	<b>1,058,853</b>
MD	CB5MH_MD	Agriculture-CAFO	--		Aggregate	3	0	0	3	0	0
MD	CB5MH_MD	Stormwater-MS4	--		Aggregate	1,365	284	83,321	1,365	284	83,321
MD	CB5MH_MD	wastewater-Municipal	SIG	MD0021679	MARLAY-TAYLOR WWTP	73,093	5,482	548,201	73,093	5,482	548,201
<b>MD</b>	<b>CB5MH_MD</b>	<b>SubTotal</b>				<b>74,462</b>	<b>5,766</b>	<b>631,522</b>	<b>74,462</b>	<b>5,766</b>	<b>631,522</b>

Appendix B1 - Point Source Final Target Loads for Maryland's Phase I Plan

STATE	Chesapeake Bay Segment	Sourcename	Type	NPDES	Facility	EOS TN 2020 (lbs/yr)	EOS TP 2020 (lbs/yr)	EOS TSS 2020 (lbs/yr)	DEL TN 2020 (lbs/yr)	DEL TP 2020 (lbs/yr)	DEL TSS 2020 (lbs/yr)
MD	CHOMH1	Agriculture-CAFO	--		Aggregate	481	33	0	481	33	0
MD	CHOMH1	Stormwater-MS4	--		Aggregate	2,186	611	367,182	2,186	611	367,182
MD	CHOMH1	wastewater-Industrial	INSIG		Aggregate	10	1	70	10	1	70
MD	CHOMH1	wastewater-Municipal	INSIG		Aggregate	6,227	1,038	19,004	6,227	1,038	19,004
<b>MD</b>	<b>CHOMH1</b>	<b>SubTotal</b>				<b>8,904</b>	<b>1,683</b>	<b>386,256</b>	<b>8,904</b>	<b>1,683</b>	<b>386,256</b>
MD	CHOMH2	Agriculture-CAFO	--		Aggregate	777	56	0	777	56	0
MD	CHOMH2	Stormwater-MS4	--		Aggregate	1,977	748	181,772	1,977	748	181,772
MD	CHOMH2	wastewater-Industrial	INSIG		Aggregate	312	111	1,059	312	111	1,059
MD	CHOMH2	wastewater-Municipal	INSIG		Aggregate	11,218	1,557	43,856	11,218	1,557	43,856
MD	CHOMH2	wastewater-Municipal	SIG	MD0021636	CAMBRIDGE WWTP	98,676	7,401	740,071	98,676	7,401	740,071
<b>MD</b>	<b>CHOMH2</b>	<b>SubTotal</b>				<b>112,961</b>	<b>9,873</b>	<b>966,759</b>	<b>112,961</b>	<b>9,873</b>	<b>966,759</b>
MD	CHOOH	Agriculture-CAFO	--		Aggregate	2,623	181	124	2,623	181	124
MD	CHOOH	Stormwater-MS4	--		Aggregate	1,623	729	181,890	1,623	729	181,890
MD	CHOOH	wastewater-Municipal	INSIG		Aggregate	3,488	581	10,599	3,488	581	10,599
MD	CHOOH	wastewater-Municipal	SIG	MD0020273	EASTON UTILITIES WWTF	48,729	3,655	365,467	48,729	3,655	365,467
<b>MD</b>	<b>CHOOH</b>	<b>SubTotal</b>				<b>56,463</b>	<b>5,145</b>	<b>558,079</b>	<b>56,463</b>	<b>5,145</b>	<b>558,079</b>
MD	CHOTF	Agriculture-CAFO	--		Aggregate	9,763	730	586	8,577	676	709
MD	CHOTF	Stormwater-MS4	--		Aggregate	5,393	2,461	792,208	4,580	2,244	1,057,577
MD	CHOTF	wastewater-Industrial	INSIG		Aggregate	2,757	984	9,244	2,756	984	9,258
MD	CHOTF	wastewater-Industrial	SIG	MD0067857	ALLEN FAMILY FOODS	4,500	370	62,091	4,500	370	62,091
MD	CHOTF	wastewater-Municipal	INSIG		Aggregate	9,586	866	47,419	7,954	773	59,107
MD	CHOTF	wastewater-Municipal	SIG	MD0020494	DENTON WWTP	9,746	731	73,093	9,746	731	73,093
<b>MD</b>	<b>CHOTF</b>	<b>SubTotal</b>				<b>41,744</b>	<b>6,142</b>	<b>984,643</b>	<b>38,113</b>	<b>5,779</b>	<b>1,261,836</b>
MD	CHSMH	Agriculture-CAFO	--		Aggregate	1,778	125	247	1,778	125	247
MD	CHSMH	Stormwater-MS4	--		Aggregate	1,664	628	311,658	1,664	628	311,658
MD	CHSMH	wastewater-Industrial	INSIG		Aggregate	154	1	74	154	1	74
MD	CHSMH	wastewater-Municipal	INSIG		Aggregate	20,283	3,381	33,806	20,283	3,381	33,806
MD	CHSMH	wastewater-Municipal	SIG	MD0020010	CHESTERTOWN WWTP	18,273	1,371	137,050	18,273	1,371	137,050
MD	CHSMH	wastewater-Municipal	SIG	MD0020834	CENTREVILLE WATER TREATMENT	6,091	456	45,683	6,091	456	45,683
<b>MD</b>	<b>CHSMH</b>	<b>SubTotal</b>				<b>48,244</b>	<b>5,961</b>	<b>528,519</b>	<b>48,244</b>	<b>5,961</b>	<b>528,519</b>

STATE	Chesapeake Bay Segment	Sourcename	Type	NPDES	Facility	EOS TN 2020 (lbs/yr)	EOS TP 2020 (lbs/yr)	EOS TSS 2020 (lbs/yr)	DEL TN 2020 (lbs/yr)	DEL TP 2020 (lbs/yr)	DEL TSS 2020 (lbs/yr)
MD	CHSOH	Agriculture-CAFO	--		Aggregate	2,377	167	168	2,377	167	168
MD	CHSOH	Stormwater-MS4	--		Aggregate	1,341	573	242,596	1,341	573	242,596
MD	CHSOH	wastewater-Industrial	INSIG		Aggregate	10,158	2,313	27,510	10,158	2,313	27,510
MD	CHSOH	wastewater-Municipal	INSIG		Aggregate	10,461	1,743	28,324	10,461	1,743	28,324
<b>MD</b>	<b>CHSOH</b>	<b>SubTotal</b>				<b>24,337</b>	<b>4,798</b>	<b>298,598</b>	<b>24,337</b>	<b>4,798</b>	<b>298,598</b>
MD	CHSTF	Agriculture-CAFO	--		Aggregate	2,262	154	170	1,968	144	212
MD	CHSTF	Stormwater-MS4	--		Aggregate	815	311	90,023	697	284	115,426
MD	CHSTF	wastewater-Municipal	INSIG		Aggregate	6,631	1,105	17,817	5,924	1,039	21,904
<b>MD</b>	<b>CHSTF</b>	<b>SubTotal</b>				<b>9,708</b>	<b>1,570</b>	<b>108,010</b>	<b>8,590</b>	<b>1,467</b>	<b>137,542</b>
MD	EASMH	Agriculture-CAFO	--		Aggregate	2,081	149	0	2,081	149	0
MD	EASMH	Stormwater-MS4	--		Aggregate	3,287	1,089	455,664	3,287	1,089	455,664
MD	EASMH	wastewater-Industrial	INSIG		Aggregate	19,391	652	59,006	19,391	652	59,006
MD	EASMH	wastewater-Municipal	INSIG		Aggregate	822	137	1,371	822	137	1,371
MD	EASMH	wastewater-Municipal	SIG	MD0023604	TALBOT COUNTY REGION II WWTP	8,040	603	60,302	8,040	603	60,302
<b>MD</b>	<b>EASMH</b>	<b>SubTotal</b>				<b>33,621</b>	<b>2,630</b>	<b>576,343</b>	<b>33,621</b>	<b>2,630</b>	<b>576,343</b>
MD	ELKOH	Stormwater-MS4	--		Aggregate	41,381	4,268	1,273,663	40,682	4,239	1,305,429
MD	ELKOH	wastewater-Industrial	INSIG		Aggregate	4	0	5,533	4	0	5,533
MD	ELKOH	wastewater-Municipal	INSIG		Aggregate	14,876	2,479	50,160	14,876	2,479	50,160
MD	ELKOH	wastewater-Municipal	SIG	MD0020681	ELKTON WWTP	37,156	2,787	278,669	37,156	2,787	278,669
<b>MD</b>	<b>ELKOH</b>	<b>SubTotal</b>				<b>93,417</b>	<b>9,534</b>	<b>1,608,025</b>	<b>92,717</b>	<b>9,506</b>	<b>1,639,790</b>
MD	FSBMH	Agriculture-CAFO	--		Aggregate	1,585	124	0	1,510	122	0
MD	FSBMH	Stormwater-MS4	--		Aggregate	989	239	49,170	973	236	58,292
MD	FSBMH	wastewater-Industrial	INSIG		Aggregate	9,643	1,082	23,372	9,643	1,082	23,372
<b>MD</b>	<b>FSBMH</b>	<b>SubTotal</b>				<b>12,216</b>	<b>1,445</b>	<b>72,542</b>	<b>12,125</b>	<b>1,440</b>	<b>81,663</b>
MD	GUNOH	Agriculture-CAFO	--		Aggregate	4,603	106	2,361	488	27	154
MD	GUNOH	Stormwater-MS4	--		Aggregate	399,690	19,931	15,593,464	234,283	15,404	9,084,466
MD	GUNOH	wastewater-Industrial	INSIG		Aggregate	2,086	158	101,554	1,027	122	25,891
MD	GUNOH	wastewater-Municipal	INSIG		Aggregate	12,195	1,238	57,470	6,770	969	10,457
MD	GUNOH	wastewater-Municipal	SIG	MD0022446	HAMPSTEAD WWTP	10,964	822	82,230	4,420	426	20,217
MD	GUNOH	wastewater-Municipal	SIG	MD0022535	JOPPATOWNE WWTP	11,573	868	86,798	8,725	720	98,160
<b>MD</b>	<b>GUNOH</b>	<b>SubTotal</b>				<b>441,112</b>	<b>23,124</b>	<b>15,923,876</b>	<b>255,714</b>	<b>17,669</b>	<b>9,239,345</b>



Appendix B1 - Point Source Final Target Loads for Maryland's Phase I Plan

STATE	Chesapeake Bay Segment	Sourcename	Type	NPDES	Facility	EOS TN 2020 (lbs/yr)	EOS TP 2020 (lbs/yr)	EOS TSS 2020 (lbs/yr)	DEL TN 2020 (lbs/yr)	DEL TP 2020 (lbs/yr)	DEL TSS 2020 (lbs/yr)
MD	HNGMH	Agriculture-CAFO	--		Aggregate	39	3	0	39	3	0
MD	HNGMH	Stormwater-MS4	--		Aggregate	395	65	10,247	395	65	10,247
MD	HNGMH	wastewater-Industrial	INSIG		Aggregate	60	7	397	60	7	397
<b>MD</b>	<b>HNGMH</b>	<b>SubTotal</b>				<b>494</b>	<b>75</b>	<b>10,644</b>	<b>494</b>	<b>75</b>	<b>10,644</b>
MD	LCHMH	Agriculture-CAFO	--		Aggregate	589	42	0	589	42	0
MD	LCHMH	Stormwater-MS4	--		Aggregate	850	185	98,374	850	185	98,374
MD	LCHMH	wastewater-Industrial	INSIG		Aggregate	15	2	110	15	2	110
<b>MD</b>	<b>LCHMH</b>	<b>SubTotal</b>				<b>1,454</b>	<b>229</b>	<b>98,483</b>	<b>1,454</b>	<b>229</b>	<b>98,483</b>
MD	MAGMH	Stormwater-MS4	--		Aggregate	48,212	5,907	901,053	48,212	5,907	901,053
MD	MAGMH	wastewater-Industrial	INSIG		Aggregate	58	3	397	58	3	397
<b>MD</b>	<b>MAGMH</b>	<b>SubTotal</b>				<b>48,270</b>	<b>5,910</b>	<b>901,450</b>	<b>48,270</b>	<b>5,910</b>	<b>901,450</b>
MD	MANMH	Agriculture-CAFO	--		Aggregate	2,015	166	0	2,015	166	0
MD	MANMH	Stormwater-MS4	--		Aggregate	1,853	689	156,305	1,853	689	156,305
MD	MANMH	wastewater-Industrial	INSIG		Aggregate	3,522	341	18,648	3,522	341	18,648
MD	MANMH	wastewater-Municipal	INSIG		Aggregate	23,268	3,878	43,856	23,268	3,878	43,856
MD	MANMH	wastewater-Municipal	SIG	MD0020656	PRINCESS ANNE WWTP	11,512	1,151	115,122	11,512	1,151	115,122
<b>MD</b>	<b>MANMH</b>	<b>SubTotal</b>				<b>42,169</b>	<b>6,225</b>	<b>333,932</b>	<b>42,169</b>	<b>6,225</b>	<b>333,932</b>
MD	MATTF	Stormwater-MS4	--		Aggregate	61,895	10,049	2,218,881	36,963	7,544	2,076,430
MD	MATTF	wastewater-Federal	SIG	MD0003158	NAVAL SUPPORT FACILITY INDIAN HEAD INDUST	1,777	740	41,937	1,777	740	41,937
MD	MATTF	wastewater-Industrial	INSIG		Aggregate	2	0	36	1	0	34
MD	MATTF	wastewater-Municipal	SIG	MD0020052	INDIAN HEAD WWTP	6,091	457	45,683	6,091	457	45,683
<b>MD</b>	<b>MATTF</b>	<b>SubTotal</b>				<b>69,766</b>	<b>11,246</b>	<b>2,306,538</b>	<b>44,833</b>	<b>8,741</b>	<b>2,164,085</b>
MD	MIDOH	Stormwater-MS4	--		Aggregate	17,975	2,335	460,580	17,975	2,335	460,580
MD	MIDOH	wastewater-Industrial	INSIG		Aggregate	13,663	1,056	49,162	13,663	1,056	49,162
<b>MD</b>	<b>MIDOH</b>	<b>SubTotal</b>				<b>31,639</b>	<b>3,392</b>	<b>509,743</b>	<b>31,639</b>	<b>3,392</b>	<b>509,743</b>
MD	NANMH	Agriculture-CAFO	--		Aggregate	752	58	0	752	58	0
MD	NANMH	Stormwater-MS4	--		Aggregate	567	176	38,801	567	176	38,801
MD	NANMH	wastewater-Industrial	INSIG		Aggregate	800	4	1,936	800	4	1,936
<b>MD</b>	<b>NANMH</b>	<b>SubTotal</b>				<b>2,120</b>	<b>238</b>	<b>40,737</b>	<b>2,120</b>	<b>238</b>	<b>40,737</b>
MD	NANOH	Agriculture-CAFO	--		Aggregate	4,600	338	145	4,306	322	192
MD	NANOH	Stormwater-MS4	--		Aggregate	3,221	1,388	388,310	3,195	1,379	398,733
MD	NANOH	Wastewater-CSO	--		Aggregate	8,874	1,109	144,202	8,874	1,109	144,202
MD	NANOH	wastewater-Industrial	INSIG		Aggregate	4,972	1,349	27,306	4,972	1,349	27,306
MD	NANOH	wastewater-Municipal	INSIG		Aggregate	6,277	1,046	27,593	6,277	1,046	27,593
MD	NANOH	wastewater-Municipal	SIG	MD0020249	FEDERALSBURG WWTP	9,137	685	68,525	9,137	685	68,525
MD	NANOH	wastewater-Municipal	SIG	MD0022730	HURLOCK WWTP	20,101	1,508	150,755	20,101	1,508	150,755
<b>MD</b>	<b>NANOH</b>	<b>SubTotal</b>				<b>57,181</b>	<b>7,423</b>	<b>806,836</b>	<b>56,861</b>	<b>7,398</b>	<b>817,307</b>

STATE	Chesapeake Bay Segment	Sourcename	Type	NPDES	Facility	EOS TN 2020 (lbs/yr)	EOS TP 2020 (lbs/yr)	EOS TSS 2020 (lbs/yr)	DEL TN 2020 (lbs/yr)	DEL TP 2020 (lbs/yr)	DEL TSS 2020 (lbs/yr)
MD	NANTF_DE	Agriculture-CAFO	--		Aggregate	115	9	1	115	9	1
MD	NANTF_DE	Stormwater-MS4	--		Aggregate	95	39	5,892	95	39	5,892
<b>MD</b>	<b>NANTF_DE</b>	<b>SubTotal</b>				<b>210</b>	<b>48</b>	<b>5,894</b>	<b>210</b>	<b>48</b>	<b>5,894</b>
MD	NANTF_MD	Agriculture-CAFO	--		Aggregate	252	21	0	252	21	0
MD	NANTF_MD	Stormwater-MS4	--		Aggregate	150	46	14,584	150	46	14,584
MD	NANTF_MD	wastewater-Municipal	INSIG		Aggregate	6,481	1,080	13,705	6,481	1,080	13,705
<b>MD</b>	<b>NANTF_MD</b>	<b>SubTotal</b>				<b>6,883</b>	<b>1,147</b>	<b>28,289</b>	<b>6,883</b>	<b>1,147</b>	<b>28,289</b>
MD	NORTF	Stormwater-MS4	--		Aggregate	35,473	3,543	3,326,405	29,780	3,307	3,637,117
MD	NORTF	wastewater-Municipal	INSIG		Aggregate	1,197	199	2,741	1,197	199	2,741
MD	NORTF	wastewater-Municipal	SIG	MD0052027	NORTHEAST RIVER ADVANCED WWTP	24,364	1,827	182,734	24,364	1,827	182,734
<b>MD</b>	<b>NORTF</b>	<b>SubTotal</b>				<b>61,034</b>	<b>5,569</b>	<b>3,511,880</b>	<b>55,341</b>	<b>5,334</b>	<b>3,822,591</b>
MD	PATMH	Agriculture-CAFO	--		Aggregate	5,414	114	3,241	3,403	78	2,397
MD	PATMH	Stormwater-MS4	--		Aggregate	941,726	70,452	47,457,231	704,893	58,409	42,614,538
MD	PATMH	wastewater-Industrial	INSIG		Aggregate	146,643	7,163	533,938	124,157	4,647	462,280
MD	PATMH	wastewater-Industrial	SIG	MD-COXCRC	COX CREEK DREDGED MATERIAL CONTAINMENT FACILITY						
MD	PATMH	wastewater-Industrial	SIG	MD-MASNV	Masonville Dredging Facility <sup>1</sup>	231,082	3,620	193,606	231,082	3,620	193,606
MD	PATMH	wastewater-Industrial	SIG	MD0000311	W R GRACE	310,737	1,809	334,037	310,737	1,809	334,037
MD	PATMH	wastewater-Industrial	SIG	MD0001201	SEVERSTAL SPARROWS POINT <sup>2</sup>	131,420	25,400	85,863	131,420	25,400	85,863
MD	PATMH	wastewater-Industrial	SIG	MD0001384	CONGOLEUM	4,005	160	19,324	0	0	0
MD	PATMH	wastewater-Industrial	SIG	MD0001775	ERACHEM <sup>3</sup>	13,800	58	8,352	13,800	58	8,352
MD	PATMH	wastewater-Industrial	SIG	MD_COXCRC	COX CREEK DREDGED MATERIAL CONTAINMENT FACILITY	231,082	3,620	193,606	231,082	3,620	193,606
MD	PATMH	wastewater-Municipal	INSIG		Aggregate	10,422	1,737	37,917	7,761	1,183	29,099
MD	PATMH	wastewater-Municipal	SIG	MD0021512	FREEDOM DISTRICT WWTP	42,638	3,198	319,784	26,788	2,169	236,508
MD	PATMH	wastewater-Municipal	SIG	MD0021601	PATAPSCO WWTP	889,304	66,698	6,669,776	889,304	66,698	6,669,776
MD	PATMH	wastewater-Municipal	SIG	MD0021661	COX CREEK WATER RECLAMATION FACILITY	182,734	13,705	1,370,502	182,734	13,705	1,370,502
MD	PATMH	wastewater-Municipal	SIG	MD0022527	MOUNT AIRY WWTP	14,619	1,096	109,640	9,184	744	81,088
<b>MD</b>	<b>PATMH</b>	<b>SubTotal</b>				<b>3,155,624</b>	<b>198,831</b>	<b>57,336,818</b>	<b>2,866,344</b>	<b>182,139</b>	<b>52,281,653</b>
MD	PAXMH	Stormwater-MS4	--		Aggregate	12,307	2,763	715,608	12,307	2,763	715,608
MD	PAXMH	wastewater-Industrial	INSIG		Aggregate	15,509	13,821	138,152	15,509	13,821	138,152
<b>MD</b>	<b>PAXMH</b>	<b>SubTotal</b>				<b>27,816</b>	<b>16,584</b>	<b>853,761</b>	<b>27,816</b>	<b>16,584</b>	<b>853,761</b>

STATE	Chesapeake Bay Segment	Sourcename	Type	NPDES	Facility	EOS TN 2020 (lbs/yr)	EOS TP 2020 (lbs/yr)	EOS TSS 2020 (lbs/yr)	DEL TN 2020 (lbs/yr)	DEL TP 2020 (lbs/yr)	DEL TSS 2020 (lbs/yr)
MD	PAXOH	Stormwater-MS4	--		Aggregate	10,777	2,946	501,004	10,684	2,935	497,431
MD	PAXOH	wastewater-Industrial	INSIG		Aggregate	2	0	36	2	0	36
MD	PAXOH	wastewater-Municipal	INSIG		Aggregate	876	146	3,655	876	146	3,655
<b>MD</b>	<b>PAXOH</b>	<b>SubTotal</b>				<b>11,656</b>	<b>3,092</b>	<b>504,695</b>	<b>11,563</b>	<b>3,081</b>	<b>501,122</b>
MD	PAXTF	Stormwater-MS4	--		Aggregate	589,584	52,245	20,761,176	330,895	34,545	19,680,048
MD	PAXTF	wastewater-Federal	SIG	MD0021717	U.S. ARMY - FORT GEORGE G. MEADE	54,820	4,112	411,151	36,890	2,656	447,402
MD	PAXTF	wastewater-Industrial	INSIG		Aggregate	10,883	1,895	48,945	6,951	854	44,804
MD	PAXTF	wastewater-Industrial	SIG	MD0000469	MD & VA MILK PRODUCERS	5,431	543	42,150	3,655	351	45,867
MD	PAXTF	wastewater-Municipal	INSIG		Aggregate	16,806	2,799	42,851	16,605	2,773	42,492
MD	PAXTF	wastewater-Municipal	SIG	MD0021628	BOWIE WWTP	40,201	3,015	301,510	12,515	1,948	328,095
MD	PAXTF	wastewater-Municipal	SIG	MD0021652	PATUXENT WATER RECLAMATION FACILITY	91,367	6,853	685,251	61,483	4,426	745,671
MD	PAXTF	wastewater-Municipal	SIG	MD0021725	PARKWAY WWTP	91,367	6,853	685,251	28,444	4,426	745,671
MD	PAXTF	wastewater-Municipal	SIG	MD0021741	WESTERN BRANCH WWTP	372,777	27,958	2,795,824	372,777	27,958	2,795,824
MD	PAXTF	wastewater-Municipal	SIG	MD0055174	LITTLE PATUXENT	304,556	22,842	2,284,170	204,943	14,754	2,485,569
MD	PAXTF	wastewater-Municipal	SIG	MD0059145	PINEY ORCHARD WWTP	14,619	1,096	109,640	9,837	708	119,307
MD	PAXTF	wastewater-Municipal	SIG	MD0062596	MARYLAND CITY	30,456	2,284	228,417	9,481	1,475	248,557
MD	PAXTF	wastewater-Municipal	SIG	MD0063207	DORSEY RUN ADVANCED WWTP	24,364	1,827	182,734	16,395	1,180	198,845
<b>MD</b>	<b>PAXTF</b>	<b>SubTotal</b>				<b>1,647,231</b>	<b>134,322</b>	<b>28,579,071</b>	<b>1,110,871</b>	<b>98,055</b>	<b>27,928,151</b>
MD	PISTF	Stormwater-MS4	--		Aggregate	67,590	10,069	1,767,539	59,273	9,571	1,673,994
MD	PISTF	wastewater-Municipal	INSIG		Aggregate	2,148	358	6,396	1,644	323	5,896
MD	PISTF	wastewater-Municipal	SIG	MD0021539	PISCATAWAY WWTP	365,467	16,446	2,741,004	365,467	16,446	2,741,004
<b>MD</b>	<b>PISTF</b>	<b>SubTotal</b>				<b>435,205</b>	<b>26,873</b>	<b>4,514,938</b>	<b>426,385</b>	<b>26,339</b>	<b>4,420,894</b>
MD	POCMH_MD	Agriculture-CAFO	--		Aggregate	1,228	85	0	967	79	0
MD	POCMH_MD	Stormwater-MS4	--		Aggregate	409	124	43,365	350	115	55,660
<b>MD</b>	<b>POCMH_MD</b>	<b>SubTotal</b>				<b>1,637</b>	<b>209</b>	<b>43,365</b>	<b>1,317</b>	<b>194</b>	<b>55,660</b>
MD	POCOH_MD	Agriculture-CAFO	--		Aggregate	608	50	0	608	50	0
MD	POCOH_MD	Stormwater-MS4	--		Aggregate	1,745	941	196,894	1,745	941	196,894
<b>MD</b>	<b>POCOH_MD</b>	<b>SubTotal</b>				<b>2,353</b>	<b>991</b>	<b>196,894</b>	<b>2,353</b>	<b>991</b>	<b>196,894</b>
MD	POCOH_VA	Agriculture-CAFO	--		Aggregate	334	27	0	334	27	0
MD	POCOH_VA	Stormwater-MS4	--		Aggregate	436	207	46,287	436	207	46,287
<b>MD</b>	<b>POCOH_VA</b>	<b>SubTotal</b>				<b>770</b>	<b>234</b>	<b>46,287</b>	<b>770</b>	<b>234</b>	<b>46,287</b>

STATE	Chesapeake Bay Segment	Sourcename	Type	NPDES	Facility	EOS TN 2020 (lbs/yr)	EOS TP 2020 (lbs/yr)	EOS TSS 2020 (lbs/yr)	DEL TN 2020 (lbs/yr)	DEL TP 2020 (lbs/yr)	DEL TSS 2020 (lbs/yr)
MD	POCTF	Agriculture-CAFO	--		Aggregate	8,431	517	0	6,299	440	0
MD	POCTF	Stormwater-MS4	--		Aggregate	3,532	1,168	286,645	2,823	1,007	283,597
MD	POCTF	wastewater-Industrial	INSIG		Aggregate	128	28	2,266	112	28	2,086
MD	POCTF	wastewater-Municipal	INSIG		Aggregate	9,119	1,520	17,817	6,093	1,162	16,197
MD	POCTF	wastewater-Municipal	SIG	MD0022551	POCOMOKE CITY WWTP	17,908	1,343	134,309	17,908	1,343	134,309
MD	POCTF	wastewater-Municipal	SIG	MD0022764	SNOW HILL WWTP	6,091	457	45,683	6,091	457	45,683
<b>MD</b>	<b>POCTF</b>	<b>SubTotal</b>				<b>45,209</b>	<b>5,033</b>	<b>486,720</b>	<b>39,327</b>	<b>4,437</b>	<b>481,873</b>
MD	POTMH_MD	Stormwater-MS4	--		Aggregate	73,266	14,728	3,135,941	56,926	13,259	6,703,913
MD	POTMH_MD	wastewater-Industrial	INSIG		Aggregate	122,040	6,922	514,716	120,780	6,827	561,827
MD	POTMH_MD	wastewater-Municipal	INSIG		Aggregate	7,076	1,200	41,663	6,840	1,194	53,863
MD	POTMH_MD	wastewater-Municipal	SIG	MD0024767	LEONARDTOWN WWTP	8,284	621	62,129	8,284	621	62,129
MD	POTMH_MD	wastewater-Municipal	SIG	MD0057525	SWAN POINT WWTP	7,309	548	54,820	7,309	548	54,820
<b>MD</b>	<b>POTMH_MD</b>	<b>SubTotal</b>				<b>217,975</b>	<b>24,019</b>	<b>3,809,270</b>	<b>200,139</b>	<b>22,450</b>	<b>7,436,553</b>
MD	POTOH1_MD	Stormwater-MS4	--		Aggregate	2,253	592	141,164	2,253	592	141,164
MD	POTOH1_MD	wastewater-Industrial	INSIG		Aggregate	6	0	18	6	0	18
<b>MD</b>	<b>POTOH1_MD</b>	<b>SubTotal</b>				<b>2,259</b>	<b>592</b>	<b>141,182</b>	<b>2,259</b>	<b>592</b>	<b>141,182</b>
MD	POTOH2_MD	Stormwater-MS4	--		Aggregate	19,196	2,791	370,452	19,196	2,791	370,452
MD	POTOH2_MD	wastewater-Industrial	INSIG		Aggregate	4	1	27	4	1	27
MD	POTOH2_MD	wastewater-Municipal	INSIG		Aggregate	3,878	646	10,324	3,878	646	10,324
MD	POTOH2_MD	wastewater-Municipal	SIG	MD0020524	LA PLATA WWTP	18,273	1,371	137,050	18,273	1,371	137,050
<b>MD</b>	<b>POTOH2_MD</b>	<b>SubTotal</b>				<b>41,351</b>	<b>4,809</b>	<b>517,854</b>	<b>41,351</b>	<b>4,809</b>	<b>517,854</b>
MD	POTOH3_MD	Stormwater-MS4	--		Aggregate	6,806	1,136	173,442	6,165	1,116	173,198
<b>MD</b>	<b>POTOH3_MD</b>	<b>SubTotal</b>				<b>6,806</b>	<b>1,136</b>	<b>173,442</b>	<b>6,165</b>	<b>1,116</b>	<b>173,198</b>
MD	POTTF_DC	Stormwater-MS4	--		Aggregate	220,616	10,884	12,436,455	105,569	7,975	10,514,447
MD	POTTF_DC	wastewater-Industrial	INSIG		Aggregate	10,461	3,479	143,656	4,382	2,165	119,124
MD	POTTF_DC	wastewater-Municipal	SIG	DC0021199	BLUE PLAINS <sup>4</sup>	1,993,000	89,695	15,495,809	1,993,000	89,695	15,495,809
<b>MD</b>	<b>POTTF_DC</b>	<b>SubTotal</b>				<b>2,224,077</b>	<b>104,058</b>	<b>28,075,920</b>	<b>2,102,951</b>	<b>99,835</b>	<b>26,129,380</b>

Appendix B1 - Point Source Final Target Loads for Maryland's Phase I Plan

STATE	Chesapeake Bay Segment	Sourcename	Type	NPDES	Facility	EOS TN 2020 (lbs/yr)	EOS TP 2020 (lbs/yr)	EOS TSS 2020 (lbs/yr)	DEL TN 2020 (lbs/yr)	DEL TP 2020 (lbs/yr)	DEL TSS 2020 (lbs/yr)
MD	POTTF_MD	Agriculture-CAFO	--		Aggregate	56,693	1,968	47,421	21,201	1,087	32,261
MD	POTTF_MD	Stormwater-MS4	--		Aggregate	2,181,896	140,398	78,187,621	1,430,568	81,716	53,567,379
MD	POTTF_MD	Wastewater-CSO	--		Aggregate	164,039	17,509	2,560,353	44,966	9,672	1,741,851
MD	POTTF_MD	wastewater-Federal	SIG	MD0020877	FORT DETRICK WWTP	24,364	1,827	182,734	17,672	1,009	124,317
MD	POTTF_MD	wastewater-Federal	SIG	MD0020885	NAVAL SUPPORT FACILITY INDIAN HEAD WWTP	6,091	457	45,683	6,091	457	45,683
MD	POTTF_MD	wastewater-Industrial	INSIG		Aggregate	156,202	22,429	745,547	72,143	9,225	463,774
MD	POTTF_MD	wastewater-Industrial	SIG	MD0001422	NEW PAGE CORPORATION - LUKE (Westvaco)	12,733	597	124,473	2,610	330	84,681
MD	POTTF_MD	wastewater-Industrial	SIG	MD0021687	UPPER POTOMAC RIVER COMMISSION	79,219	30,773	1,982,660	18,441	17,000	1,348,836
MD	POTTF_MD	wastewater-Municipal	INSIG		Aggregate	180,399	28,951	556,634	94,904	15,799	373,926
MD	POTTF_MD	wastewater-Municipal	SIG	MD0003221	WINEBRENNER WATER RECLAMATION FACILITY	12,182	914	91,367	7,801	505	62,158
MD	POTTF_MD	wastewater-Municipal	SIG	MD0020231	BOONSBORO WWTP	6,100	457	48,424	4,605	252	32,944
MD	POTTF_MD	wastewater-Municipal	SIG	MD0020257	EMMITSBURG WWTP	9,137	685	68,525	3,587	379	46,619
MD	POTTF_MD	wastewater-Municipal	SIG	MD0020672	TANEYTOWN WWTP	13,400	1,005	100,503	5,260	555	68,374
MD	POTTF_MD	wastewater-Municipal	SIG	MD0020958	BRUNSWICK WWTP	17,055	1,279	127,914	14,420	707	87,022
MD	POTTF_MD	wastewater-Municipal	SIG	MD0020982	DAMASCUS WWTP	18,273	1,371	137,050	8,740	757	93,238
MD	POTTF_MD	wastewater-Municipal	SIG	MD0021121	THURMONT WWTP	12,182	914	91,367	7,030	505	62,158
MD	POTTF_MD	wastewater-Municipal	SIG	MD0021491	SENECA WWTP <sup>5</sup>	316,738	21,563	2,375,537	151,499	11,912	1,616,117
MD	POTTF_MD	wastewater-Municipal	SIG	MD0021598	CUMBERLAND WWTP	182,734	13,705	1,370,502	64,980	7,571	932,375
MD	POTTF_MD	wastewater-Municipal	SIG	MD0021610	FREDERICK CITY WWTP	97,458	7,309	730,934	70,690	4,038	497,267
MD	POTTF_MD	wastewater-Municipal	SIG	MD0021776	HAGERSTOWN WWTP	97,458	7,309	730,934	73,566	4,038	497,267
MD	POTTF_MD	wastewater-Municipal	SIG	MD0021822	BALLENGER-MCKINNEY	219,280	16,446	1,644,602	173,335	9,085	1,118,850
MD	POTTF_MD	wastewater-Municipal	SIG	MD0021831	WESTMINSTER WWTP	60,911	4,568	456,834	20,173	2,524	310,792
MD	POTTF_MD	wastewater-Municipal	SIG	MD0021865	MATTAWOMAN WWTP	243,645	10,964	1,827,336	243,645	10,964	1,827,336
MD	POTTF_MD	wastewater-Municipal	SIG	MD0023001	POOLESVILLE WWTP	9,137	685	68,525	7,243	379	46,619
MD	POTTF_MD	wastewater-Municipal	SIG	MD0023957	MARYLAND CORRECTIONAL INST	19,492	1,462	146,187	14,713	808	99,453
MD	POTTF_MD	wastewater-Municipal	SIG	MD0060071	GEORGE'S CREEK WWTP	7,309	548	54,820	1,007	303	37,295
MD	POTTF_MD	wastewater-Municipal	SIG	MD0063509	CONOCOCHIEAGUE WWTP <sup>6</sup>	49,947	3,746	374,604	32,427	2,069	254,849
MD	POTTF_MD	wastewater-Municipal	SIG	MD0063878	CELANESE WWTP	24,364	1,827	182,734	5,672	1,009	124,317
<b>MD</b>	<b>POTTF_MD</b>	<b>SubTotal</b>				<b>4,278,439</b>	<b>341,665</b>	<b>95,061,826</b>	<b>2,618,989</b>	<b>194,652</b>	<b>65,597,758</b>
MD	RHDMH	Stormwater-MS4	--		Aggregate	4,898	589	97,517	4,898	589	97,517
MD	RHDMH	wastewater-Industrial	INSIG		Aggregate	1	0	5	1	0	5
MD	RHDMH	wastewater-Municipal	SIG	MD0061794	MAYO LARGE COMUNAL	9,989	749	74,921	9,989	749	74,921
<b>MD</b>	<b>RHDMH</b>	<b>SubTotal</b>				<b>14,888</b>	<b>1,339</b>	<b>172,442</b>	<b>14,888</b>	<b>1,339</b>	<b>172,442</b>

Appendix B1 - Point Source Final Target Loads for Maryland's Phase I Plan

STATE	Chesapeake Bay Segment	Sourcename	Type	NPDES	Facility	EOS TN 2020 (lbs/yr)	EOS TP 2020 (lbs/yr)	EOS TSS 2020 (lbs/yr)	DEL TN 2020 (lbs/yr)	DEL TP 2020 (lbs/yr)	DEL TSS 2020 (lbs/yr)
MD	SASOH	Agriculture-CAFO	--		Aggregate	315	20	193	315	20	193
MD	SASOH	Stormwater-MS4	--		Aggregate	1,944	732	258,609	1,944	732	258,609
MD	SASOH	wastewater-Industrial	INSIG		Aggregate	1,298	463	4,373	1,298	463	4,373
MD	SASOH	wastewater-Municipal	INSIG		Aggregate	2,762	460	23,755	2,762	460	23,755
<b>MD</b>	<b>SASOH</b>	<b>SubTotal</b>				<b>6,320</b>	<b>1,675</b>	<b>286,930</b>	<b>6,320</b>	<b>1,675</b>	<b>286,930</b>
MD	SEVMH	Stormwater-MS4	--		Aggregate	73,984	10,349	1,711,687	73,984	10,349	1,711,687
MD	SEVMH	wastewater-Federal	SIG	MD0023523	US NAVAL ACADEMY	12,182	914	91,367	12,182	914	91,367
MD	SEVMH	wastewater-Industrial	INSIG		Aggregate	95	8	917	95	8	917
MD	SEVMH	wastewater-Municipal	SIG	MD0021814	ANNAPOLIS WATER RECLAMATION FACILITY	158,369	11,878	1,187,768	158,369	11,878	1,187,768
<b>MD</b>	<b>SEVMH</b>	<b>SubTotal</b>				<b>244,630</b>	<b>23,149</b>	<b>2,991,739</b>	<b>244,630</b>	<b>23,149</b>	<b>2,991,739</b>
MD	SOUMH	Stormwater-MS4	--		Aggregate	48,347	6,506	1,087,273	48,347	6,506	1,087,273
MD	SOUMH	wastewater-Industrial	INSIG		Aggregate	295	4	1,172	295	4	1,172
MD	SOUMH	wastewater-Municipal	INSIG		Aggregate	660	110	1,736	660	110	1,736
<b>MD</b>	<b>SOUMH</b>	<b>SubTotal</b>				<b>49,303</b>	<b>6,620</b>	<b>1,090,181</b>	<b>49,303</b>	<b>6,620</b>	<b>1,090,181</b>
MD	TANMH_MD	Agriculture-CAFO	--		Aggregate	95	8	0	95	8	0
MD	TANMH_MD	Stormwater-MS4	--		Aggregate	806	174	90,699	806	174	90,699
MD	TANMH_MD	wastewater-Industrial	INSIG		Aggregate	14	2	91	14	2	91
MD	TANMH_MD	wastewater-Municipal	INSIG		Aggregate	1,538	256	7,766	1,538	256	7,766
MD	TANMH_MD	wastewater-Municipal	SIG	MD0020001	CRISFIELD WWTP	12,182	914	91,367	12,182	914	91,367
<b>MD</b>	<b>TANMH_MD</b>	<b>SubTotal</b>				<b>14,635</b>	<b>1,353</b>	<b>189,923</b>	<b>14,635</b>	<b>1,353</b>	<b>189,923</b>
MD	WBRTF	Stormwater-MS4	--		Aggregate	111,925	18,454	3,703,155	97,344	14,994	9,489,962
MD	WBRTF	wastewater-Industrial	INSIG		Aggregate	48	8	1,073	42	7	2,749
<b>MD</b>	<b>WBRTF</b>	<b>SubTotal</b>				<b>111,973</b>	<b>18,463</b>	<b>3,704,227</b>	<b>97,386</b>	<b>15,001</b>	<b>9,492,711</b>
MD	WICMH	Agriculture-CAFO	--		Aggregate	4,224	305	0	3,956	294	0
MD	WICMH	Stormwater-MS4	--		Aggregate	20,499	3,460	545,488	19,003	3,280	659,458
MD	WICMH	wastewater-Industrial	INSIG		Aggregate	3,570	822	16,727	3,157	792	23,892
MD	WICMH	wastewater-Municipal	INSIG		Aggregate	58	10	420	58	10	420
MD	WICMH	wastewater-Municipal	SIG	MD0020532	DELMAR WWTP	10,355	777	77,662	7,817	625	131,124
MD	WICMH	wastewater-Municipal	SIG	MD0021571	SALISBURY WWTP	103,549	7,766	776,618	103,549	7,766	776,618
MD	WICMH	wastewater-Municipal	SIG	MD0052990	FRUITLAND WWTP	9,746	731	73,093	9,746	731	73,093
<b>MD</b>	<b>WICMH</b>	<b>SubTotal</b>				<b>152,001</b>	<b>13,870</b>	<b>1,490,009</b>	<b>147,286</b>	<b>13,499</b>	<b>1,664,605</b>

Appendix B1 - Point Source Final Target Loads for Maryland's Phase I Plan

STATE	Chesapeake Bay Segment	Sourcename	Type	NPDES	Facility	EOS TN 2020 (lbs\yr)	EOS TP 2020 (lbs\yr)	EOS TSS 2020 (lbs\yr)	DEL TN 2020 (lbs\yr)	DEL TP 2020 (lbs\yr)	DEL TSS 2020 (lbs\yr)
MD	WSTMH	Stormwater-MS4	--		Aggregate	3,995	497	114,092	3,995	497	114,092
MD	WSTMH	wastewater-Industrial	INSIG		Aggregate	1,297	463	4,355	1,297	463	4,355
<b>MD</b>	<b>WSTMH</b>	<b>SubTotal</b>				<b>5,292</b>	<b>960</b>	<b>118,448</b>	<b>5,292</b>	<b>960</b>	<b>118,448</b>

<sup>1</sup>MD-MASNV Masonville Dredge Material Containment Facility: During 2015, Masonville TN and TP loads (net) are required in the discharge permit to become zero (in place of 231,382 lbs/year TN and 3,620 lbs/year TP).

<sup>2</sup>MD0001201 Severstal Sparrows Point: This does not include the additional applicable allocation for Back River 002 discharging via Severstal outfalls. By 2014, Severstal TN load allocation may decrease by as much as 82,000 lbs/year as the result of a pending revised 301(g) variance determination for ammonia.

<sup>3</sup>MD0001775 Erachem: Effective September 2013

<sup>4</sup>MD0021199 Blue Plains: To date, MDE has resolved the flow and load issue for Nitrogen related to Blue Plains discharge. Essentially, the nitrogen loads equivalent to 6.0 MGD ENR effluent condition will be transferred to Seneca. Blue Plains will retain the flow capacity of 196 mgd allocated to MD with the understanding that Blue Plains would be required to offset or discharge at low concentrations if they intend to use the full MD capacity. As to Phosphorus, MDE will coordinate with WSSC to clarify the distribution of Phosphorous load allocations between Blue Plains and Seneca WWTPs. MDE will also work with EPA to clarify the 0.1 mgd flow issue at Blue Plains because this 0.1 mgd is from a federal facility.

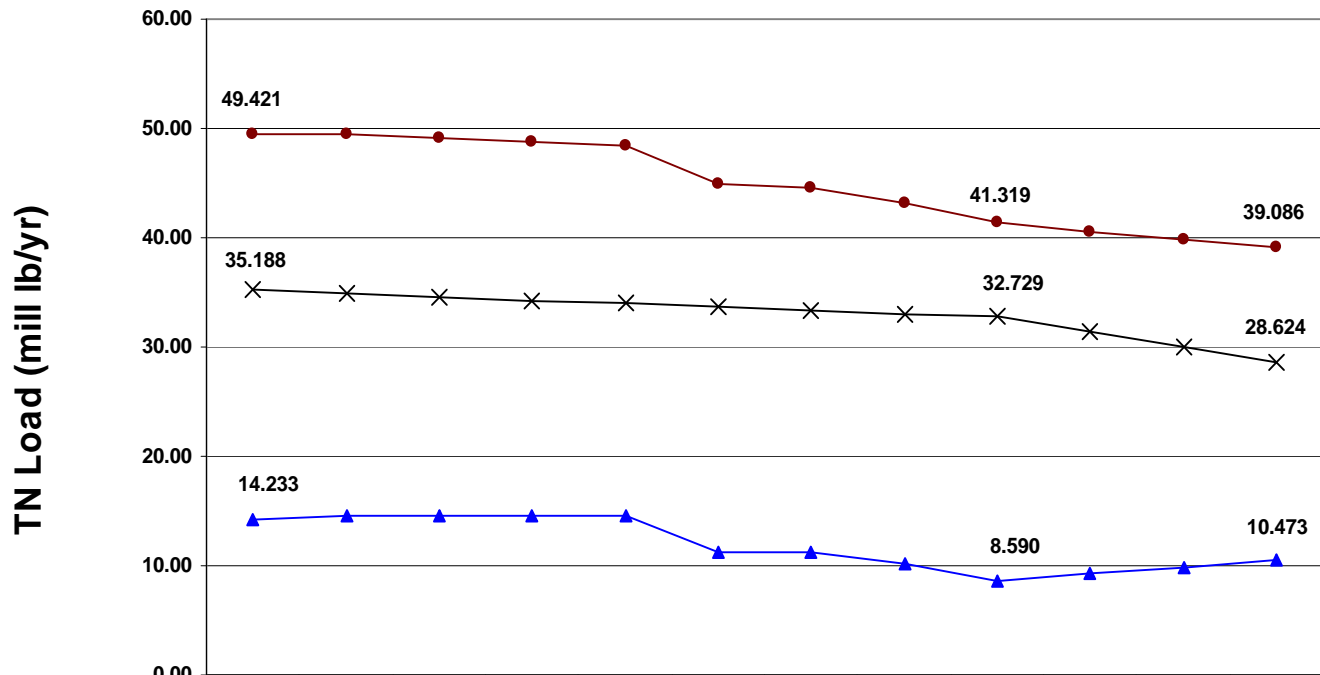
<sup>5</sup>MD0021491 Seneca: see #4

<sup>6</sup>Conococheague (MD0063509): TN load of 28,134 lb/yr TN and TP load of 13 lb/yr, previously associated with GSTAutoleather (MD0053431), may be allocated to this facility upon permit renewal in accordance with Washington County water and sewer plan. In the interim, the allocation is listed in the minor industrial loadings as the previous industrial facility is no longer operating and no longer holds an NPDES permit.

Nutrient or sediment information is not available for every NPDES permittee in Maryland's Chesapeake Bay watershed who was discharging under a permit at the time of the EPA Bay TMDL. To the extent that such discharges were occurring during the model calibration process, they are indirectly included in the results and therefore would assume to be included in the total load assigned in the TMDL. However, due to lack of specific information, the majority of these discharges have been assigned wasteload allocations in the input deck based on default assumptions regarding flow and concentrations, where available. These facilities should provide, at a minimum, nutrient and/or TSS monitoring data with their next NPDES permit renewal application. Renewed NPDES permits for these discharges may require monitoring to verify existing loads or to (1) verify that these loads do not contribute to any exceedance of the WLAs (determination of no reasonable potential to contribute to an exceedance of local WQS and/or Bay TMDL WLA). Appropriate permit requirements consistent with the local WQS and/or Bay TMDL WLA (where monitoring data show reasonable potential to contribute to an exceedance of local WQS and/or Bay TMDL WLA). As a result, Maryland may include more specific information on these facilities in future Phases of its WIP that may be used to initiate modifications to the TMDL wasteload allocations.

## Target Load Reduction Schedule for Maryland's Phase I Watershed Implementation Plan

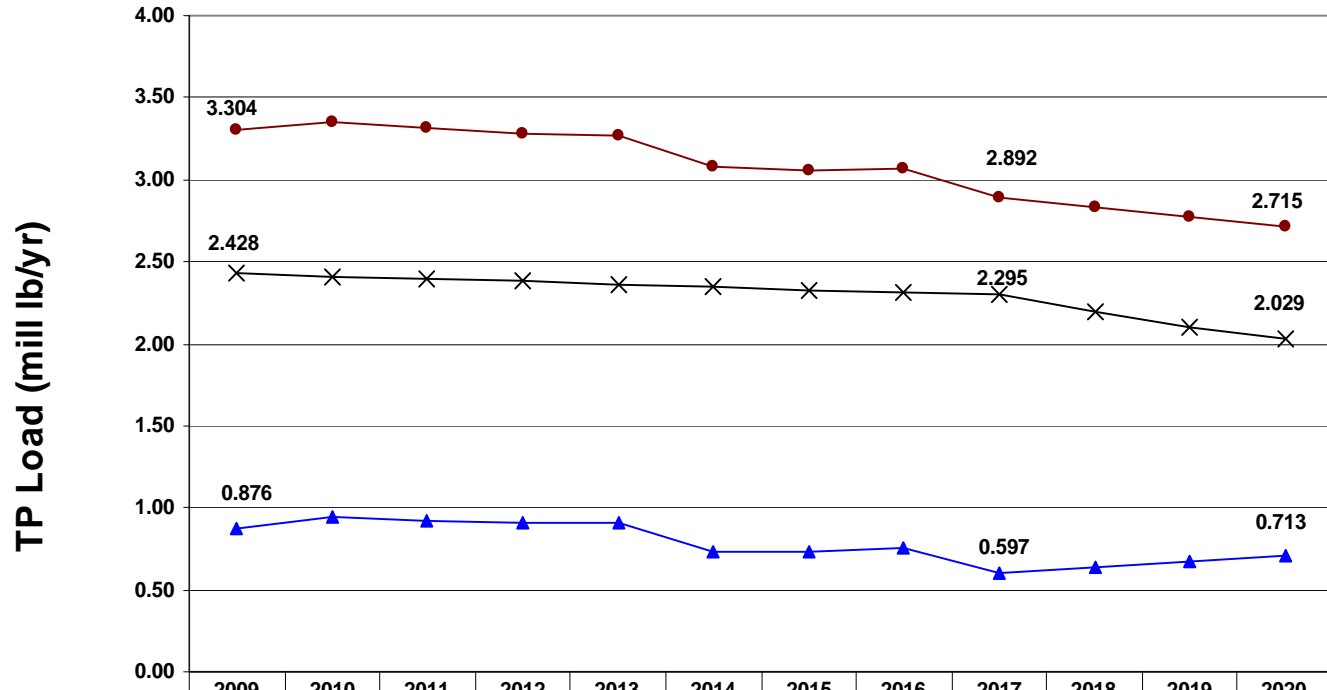
### MD TN Delivered Loads 2009 to Final target Loads



▲ Total Point Sources	14.233	14.647	14.513	14.495	14.518	11.236	11.154	10.182	8.590	9.218	9.845	10.473
× Total Non-Point Sources including SW and Air	35.188	34.881	34.573	34.266	33.958	33.651	33.343	33.036	32.729	31.357	29.985	28.624
● Total Delivered Load - All Sources	49.421	49.527	49.086	48.761	48.476	44.887	44.498	43.218	41.319	40.575	39.830	39.086

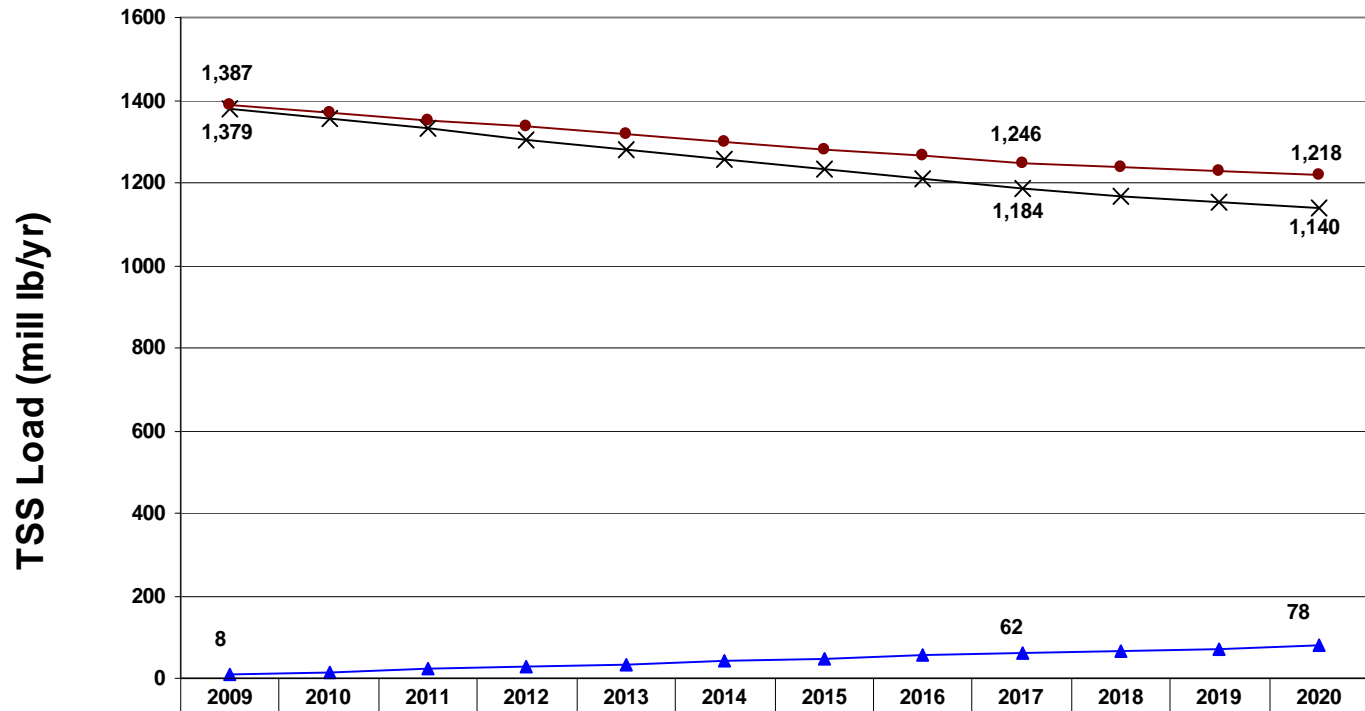


### MD TP Delivered Loads 2009 to Final target Loads



	2009	2010	2011	2012	2013	2014	2015	2016	2017	2018	2019	2020
▲ Total Point Sources	0.876	0.938	0.926	0.903	0.908	0.732	0.730	0.755	0.597	0.635	0.673	0.713
× Total Non-Point Sources including SW and Air	2.428	2.412	2.395	2.378	2.362	2.345	2.329	2.312	2.295	2.198	2.101	2.029
● Total Delivered Load - All Sources	3.304	3.350	3.321	3.281	3.269	3.078	3.058	3.067	2.892	2.833	2.774	2.715

## MD TSS Delivered Loads 2009 to Final target Loads



▲ Total Point Sources	8	15	22	28	35	42	49	55	62	67	73	78
× Total Non-Point Sources including SW and Air	1,379	1,355	1,330	1,306	1,282	1,257	1,233	1,208	1,184	1,169	1,155	1,140
● Total Delivered Load - All Sources	1,387	1,369	1,352	1,334	1,317	1,299	1,281	1,264	1,246	1,237	1,227	1,218