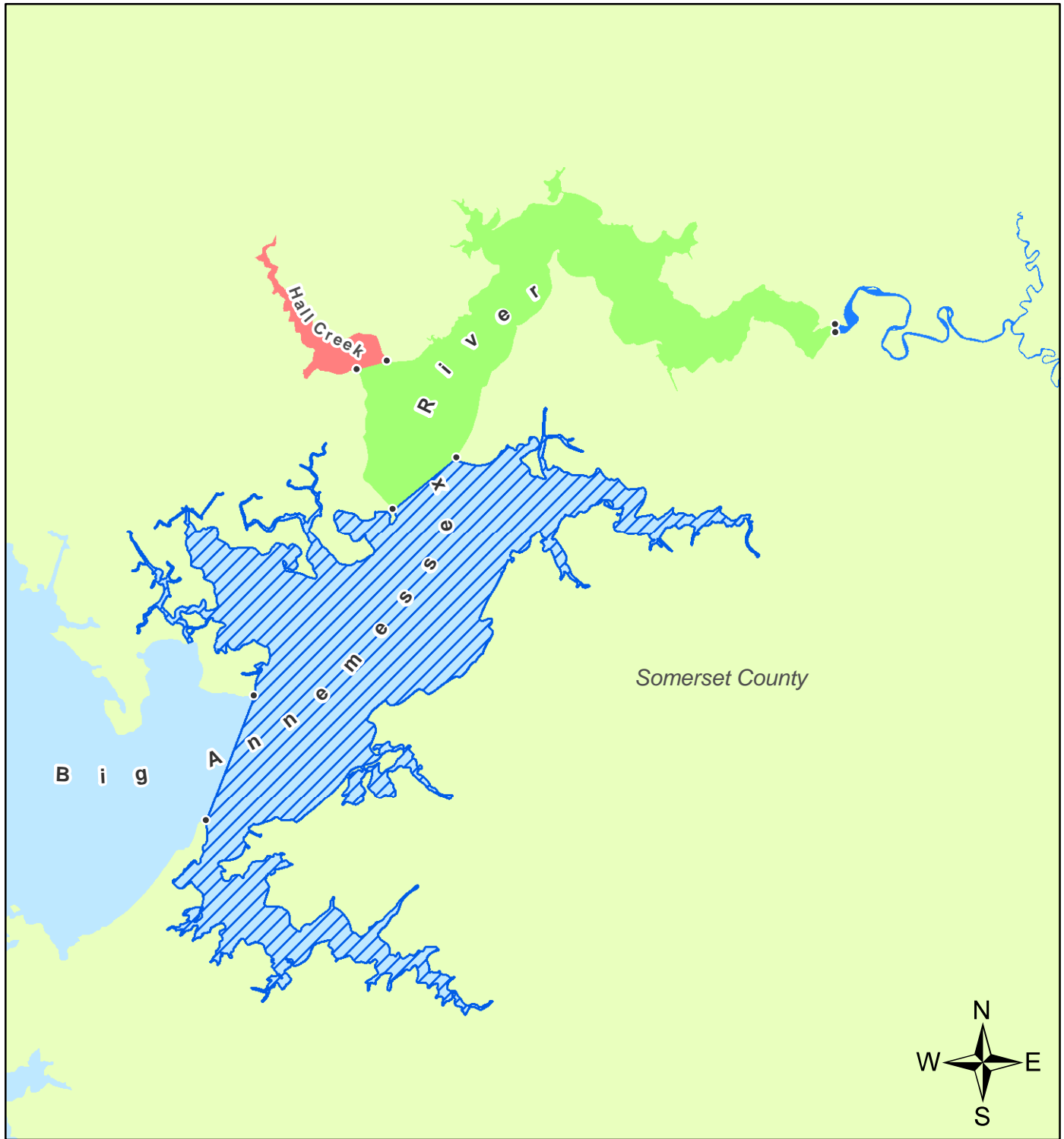






# Notice of Opening to Shellfish Harvesting



0 0.25 0.5 1 Miles

Big Annessex River, Somerset County  
Prohibited Shellfish Area Map 61  
December 2012

-  Approved By This Letter
-  Remains Conditional By This Letter
-  Remains Restricted By This Letter
-  Non-shellish Area



Martin O'Malley, Governor  
Anthony G. Brown, Lieutenant Governor  
Robert M. Summers, Secretary