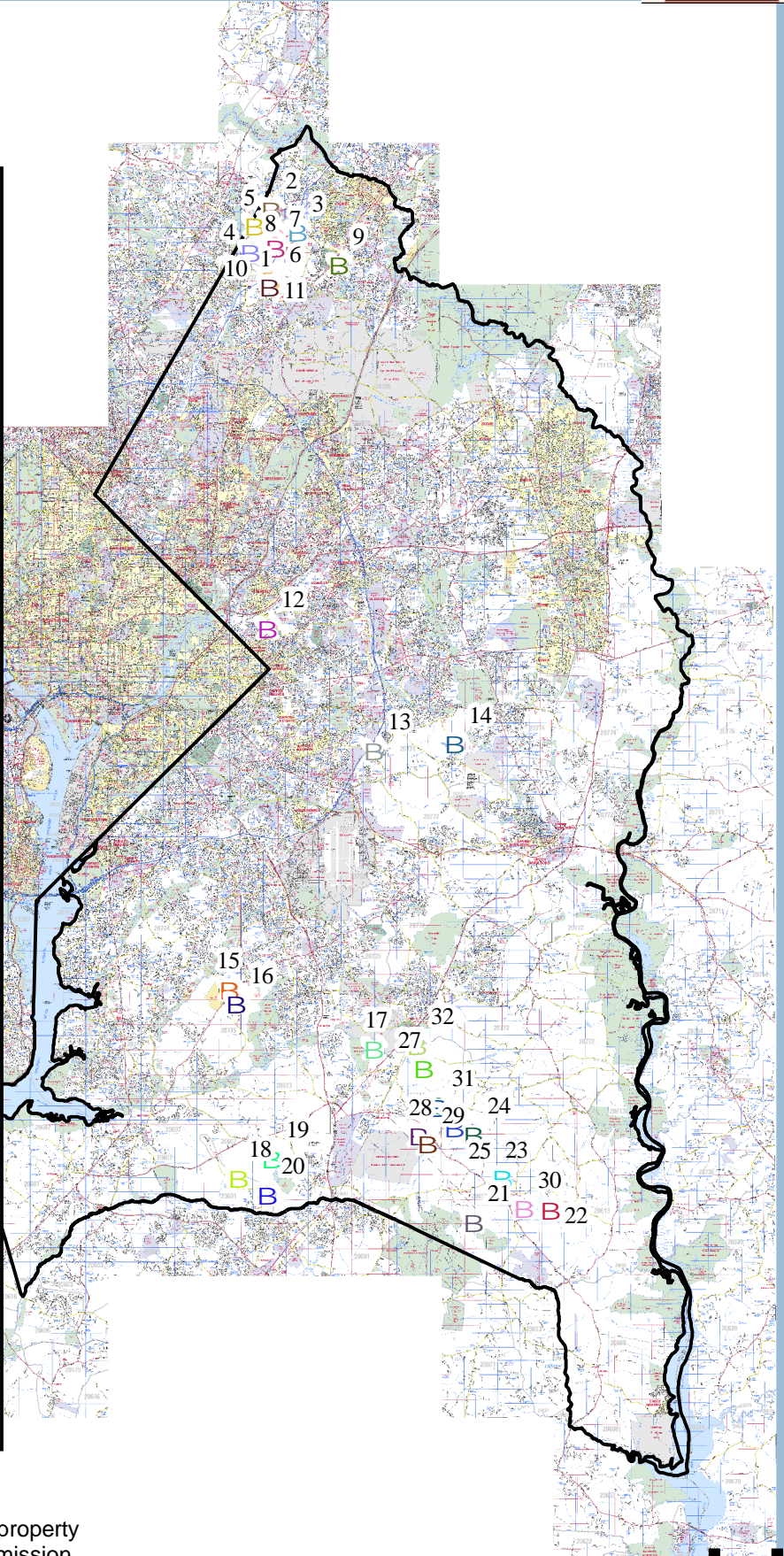


## Legend

### Prince Georges Surface Mines

#### Permit #, Common Name

-  1, 89-sp-0310, Magruder Tract 3
-  2, 96-sp-0499, Wooten Hopkins Tract
-  3, 77-sp-0124, Seven Knolls
-  4, 87-sp-0247, Whitehead N.E
-  5, 87-sp-0246, Whitehead Northwest Tract # 1
-  6, 84-sp-0167, Seven Knolls Farm
-  7, 90-sp-0351, Zantzinger Tract
-  8, 82-sp-0136, Whitehead South Pit
-  9, 77-sp-0132, Muirkirk Pit
-  10, 84-sp-0160, Magruder South Pit # 1
-  11, 82-sp-0137, Magruder South Pit # 2
-  12, 05-sp-0988, West Bros Brickyard site
-  13, 93-sp-0439, GKG Partnership Property
-  14, 80-sp-0496, Hammett Pit
-  15, 91-sp-0385, Hyde Field
-  16, 89-sp-0304, Miller Farm
-  17, 00-sp-0571, Smith 301 Brandywine Pit
-  18, 99-sp-0556, Gardner Road Mine
-  19, 04-sp-0969, Accokeek Road Site
-  20, 98-sp-0532, Queen Property
-  21, 77-sp-0038, Cedarville Pit
-  22, 89-sp-0329, Financial Pit
-  23, 82-sp-0127, Ford Rooney Pit
-  24, 00-sp-0563, Smith Tract
-  25, 77-sp-0022, Duley Pit
-  26, 77-sp-0013, Glatfelter Tract
-  27, 88-sp-0287, Brandywine Enterprises, Inc
-  28, 95-sp-0477, Brandywine Mine # 1
-  29, 95-sp-0483, Reeder Property
-  30, 08-SP-1033, Bryan Tract
-  31, 09-sp-1067, Gladfelter Pit
-  32, 98-SP-0528-A, Lee Pit 2



"Portions of this document include intellectual property of ADC and GISIS and are used herein by permission. Copyright © 2006 ADC The Map People and GIS Integrated Solutions, LLC. All Rights Reserved."ext

0 3 6 12 Miles

