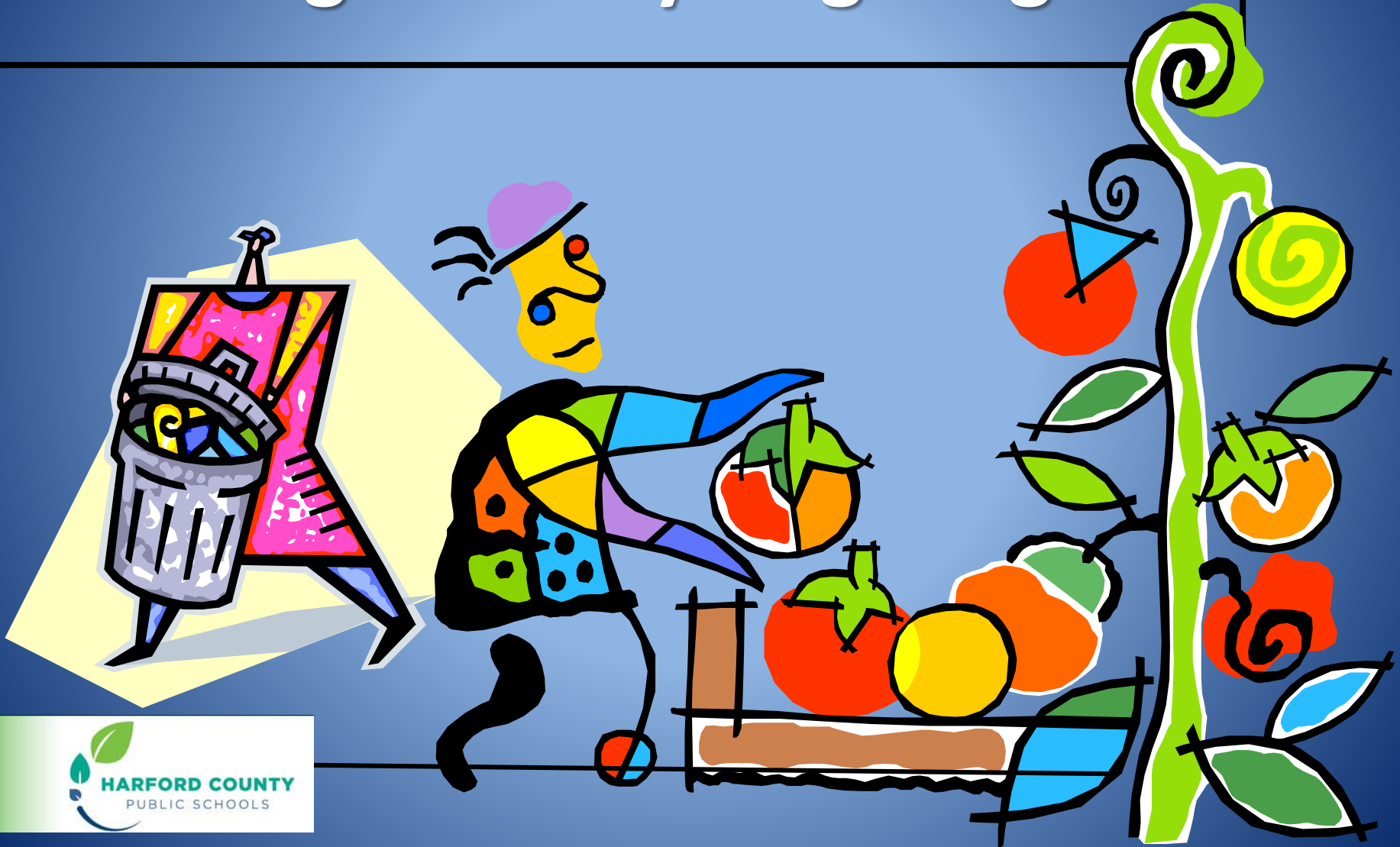


HCPS Organic Recycling Program





Food scraps are collected in our kitchens and cafeterias



The sealed collection bins are rolled outside and ready for pick up





Trucks collect the food scraps along with other organic waste from local businesses for transport.





The Wilmington Organic Recycling Center in Delaware



Compostable material collected from multiple sites arrives at the facility

The truck dumps its load into a pile, where it is then inspected and recorded by Quality and Control Specialists




In this facility material is processed to remove trash, metal, and other unwanted material. Then it is stored for additional processing





A loader moves the compostable material to aerate the pile and assist the breakdown process in order to reach a 30:1 Carbon/Nitrogen combination with 60% moisture



To reduce odors,
large pumps suck
interior air
through
underground
pipes to near by
filters.

FIRE DEPT.
CONNECTION



The
underground
pipes transport
interior air to
this large bio-
filter made of
wood chips



Front end loaders are used to move the large volume of material

This full load will go to be screened before the final composting process begins



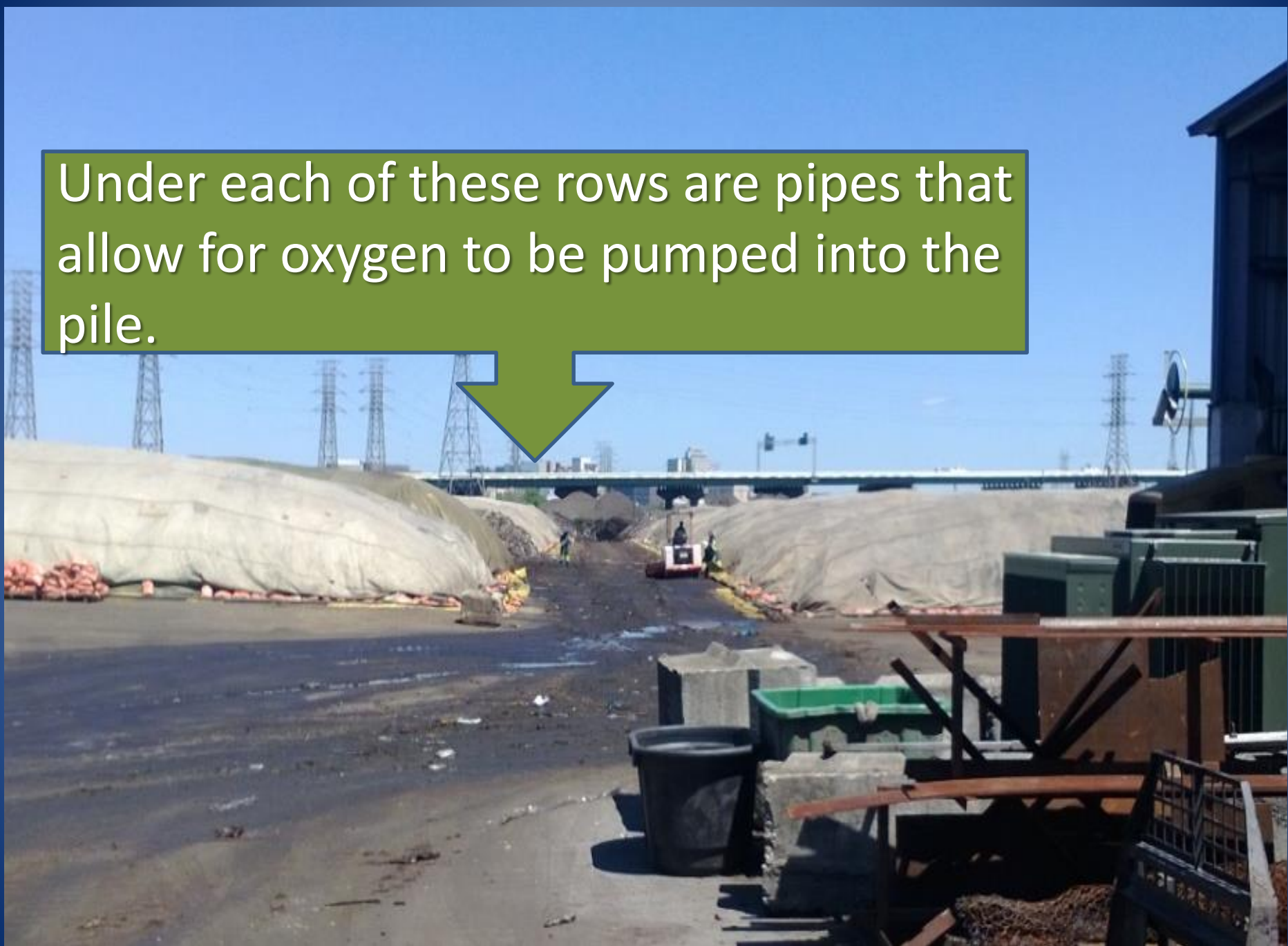


This filter screens the compostable material for all of the leftover scraps before it is placed into the compost stacks



The material is placed into large mounds and is covered by specialized tarps developed by Gore

Under each of these rows are pipes that allow for oxygen to be pumped into the pile.

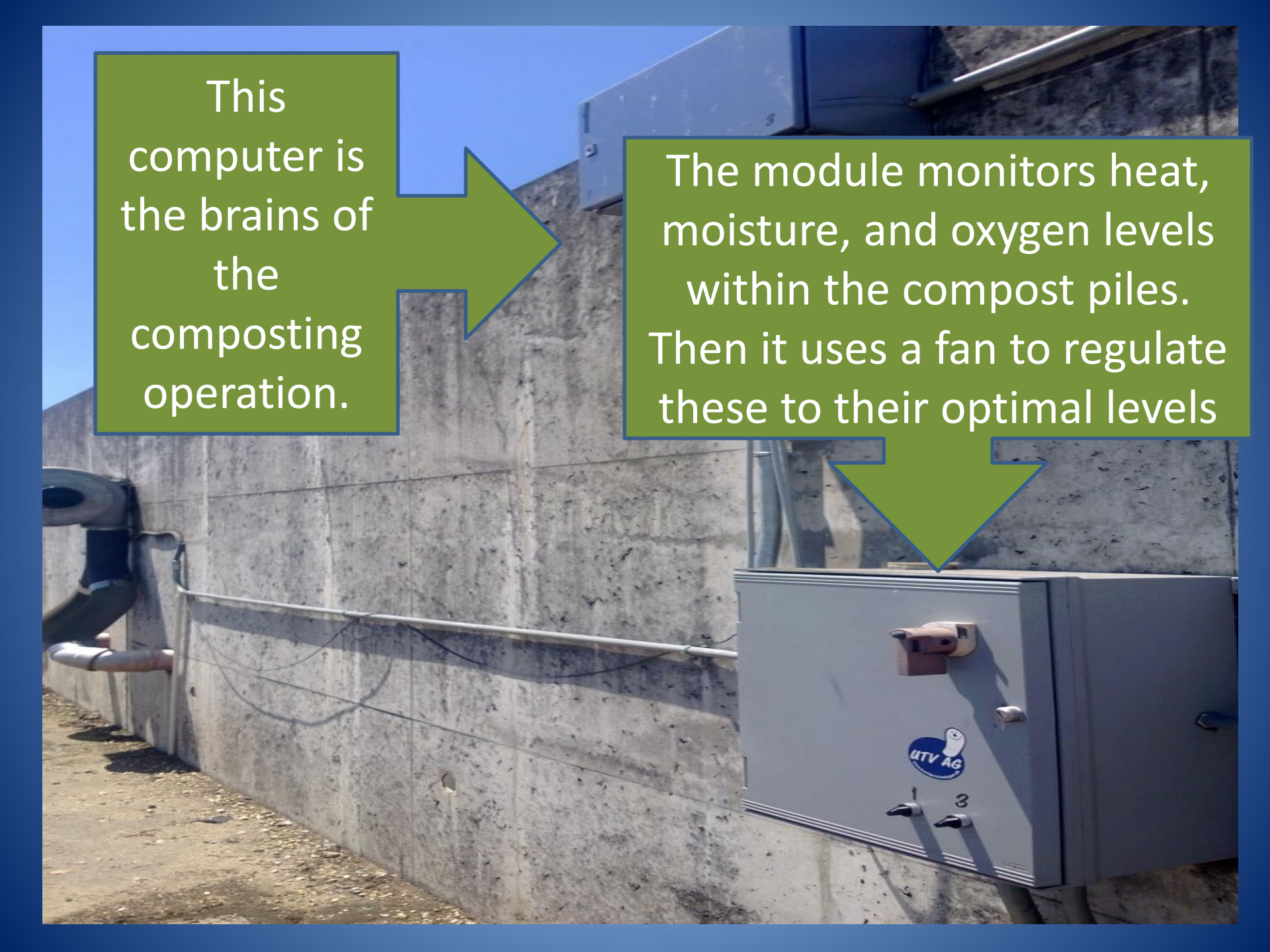


The Gore cover optimizes the breakdown process by trapping moisture and heat, while keeping out rain water



A wall at the end of the row contains fan units to pump air to the pipes under each of the piles introducing oxygen and regulating moisture



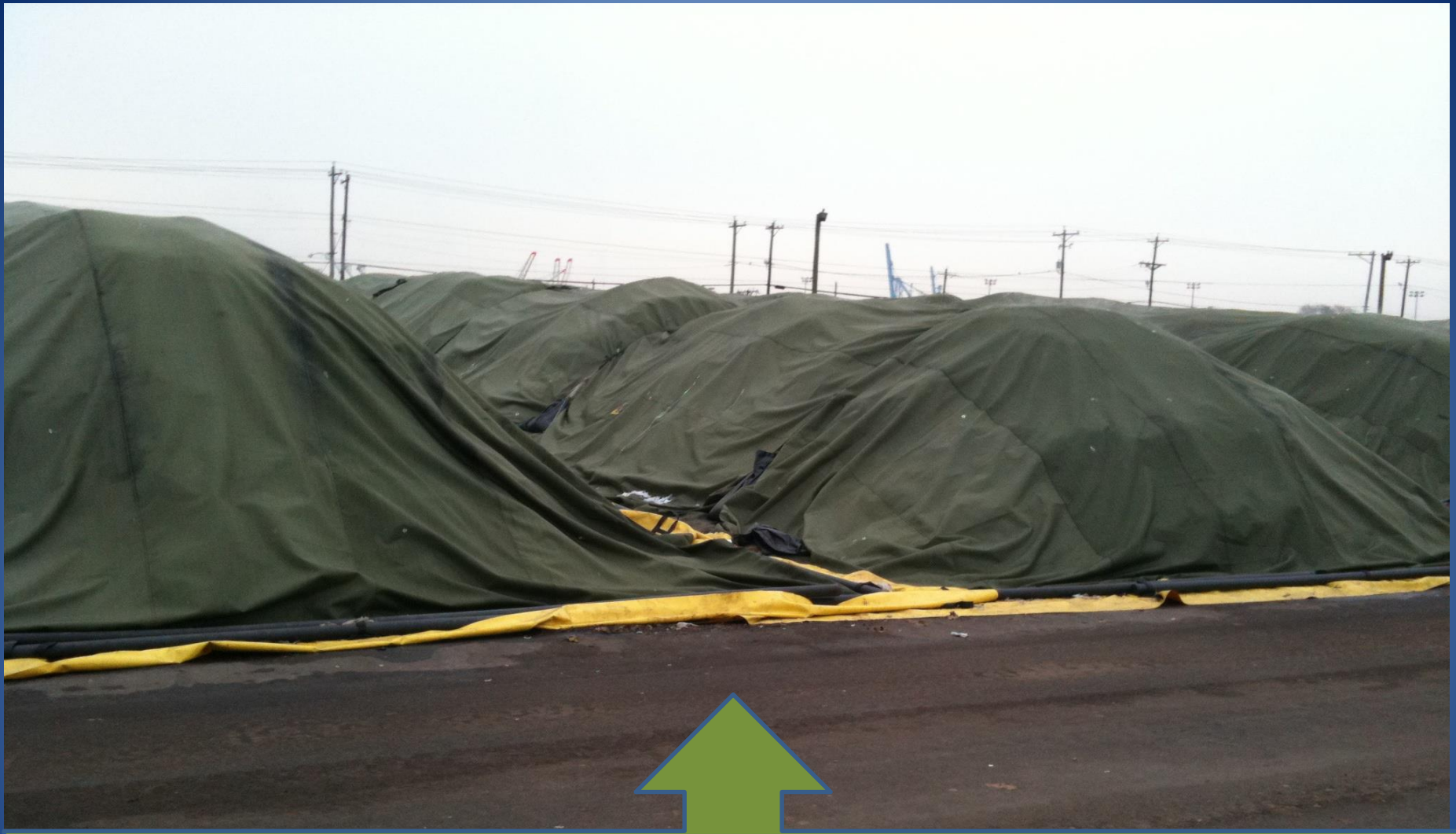


This computer is the brains of the composting operation.


The module monitors heat, moisture, and oxygen levels within the compost piles. Then it uses a fan to regulate these to their optimal levels



This is the wall at the end of the row housing the blower fans and monitors.




Monitoring and adjusting the composting process allows us to decrease nature's 1 to 2 year process time to about 8 weeks



Catch basin at the bottom of the site collects rainwater run off. Water is transported to treatment centers for cleaning.

Truck loads
of nutrient
rich compost
are delivered
to our sports
fields.





The rich
compost will
be added to
sports fields
to make the
turf grow
stronger and
healthier.

The soil is loosened and grass seed is planted with this machine





Compost is loaded into this trailer and spread on the fields.

Benefits of our Organics Recycling Program

- Reduce the amount of recyclable material going to landfills and our carbon footprint.
- Eliminate heavy lifting of food waste by custodial staff.
- Improve the safety, appearance, and playability of our sports fields.
- Align our current waste removal process with our school curriculum and educational concepts.

